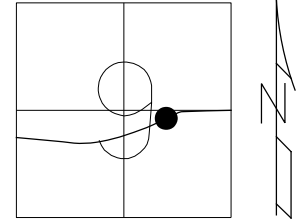


O.D.O.T. DISTRICT 2 SURVEY OFFICE (USE ONLY)

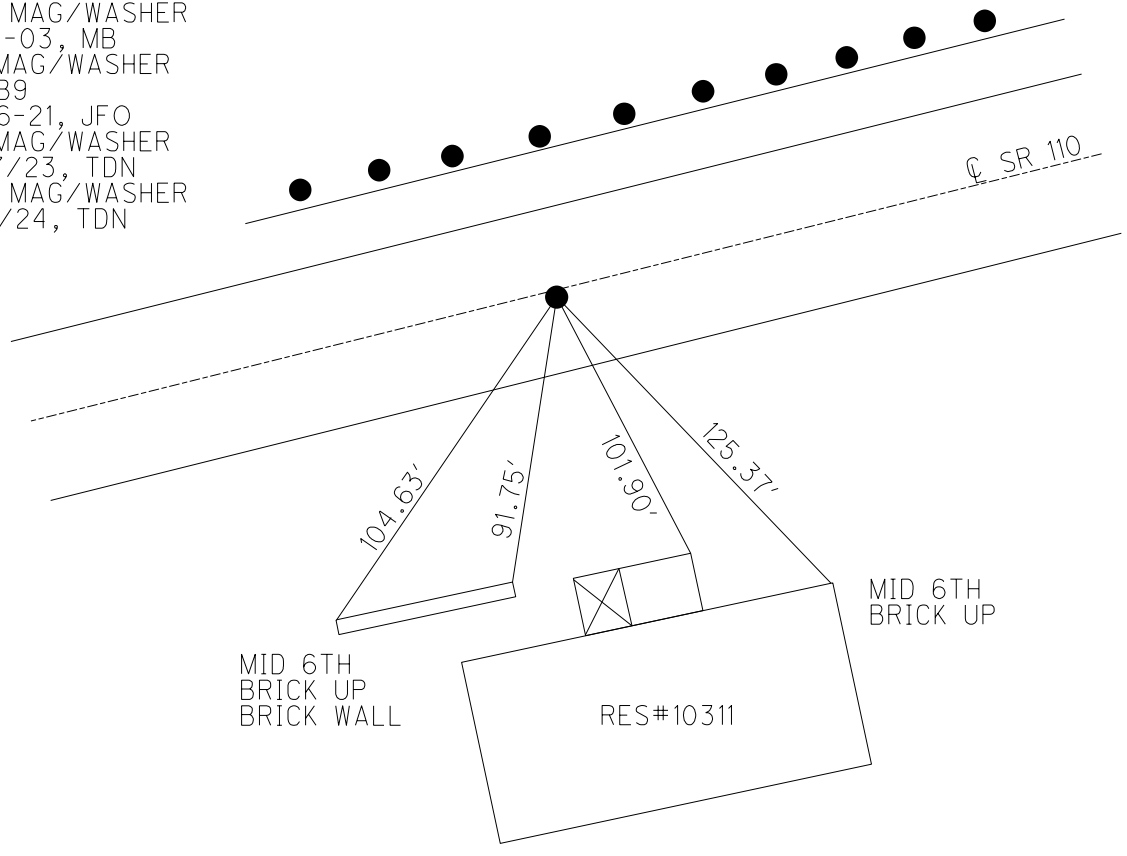
PERSONNEL \_\_\_\_\_ REFERENCE NO. 9 B SHEET 33 OF 51  
 NOTES ASTON DATE 3/7/24 ROUTE SR 110  
 H.C. NIESE WEATHER CLOUDY COUNTY HENRY  
 R.C. ASTON TEMP. 45° TOWNSHIP HARRISON  
 SECTION 9  
 DWG BY RHOADES PID 94321 T 5 N R 7 E

TYPE MONUMENT MAG/WASHER  
 ON SURFACE - ~~BELOW~~ ON \_\_\_\_\_  
 OFFSET  $\odot$  PAVEMENT 0.5'  $\pm$  : RT  
11.0' TO LT EDGE PAVEMENT  
 S.L.M. 204+83.72



HORIZ.DATUM: NAD83 (2011) GEOID: NAVD88 2018  
 GRID: NORTHING: 637601.696 EASTING: 1539659.007

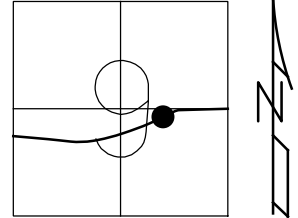
RECORD: T.S.  
 STA 209+95.29  
 $\Delta = 24^{\circ}51' 30''$  RT  
 DC =  $4^{\circ}$   
 CS = 400'  
 TS = 516.59'  
 FD P.K.WASHER  
 4-25-03  
 SET MAG/WASHER  
 6-19-03, MB  
 FD MAG/WASHER  
 REFB9  
 5-06-21, JFO  
 FD MAG/WASHER  
 8/17/23, TDN  
 SET MAG/WASHER  
 3/7/24, TDN



O.D.O.T. DISTRICT 2 SURVEY OFFICE (USE ONLY)

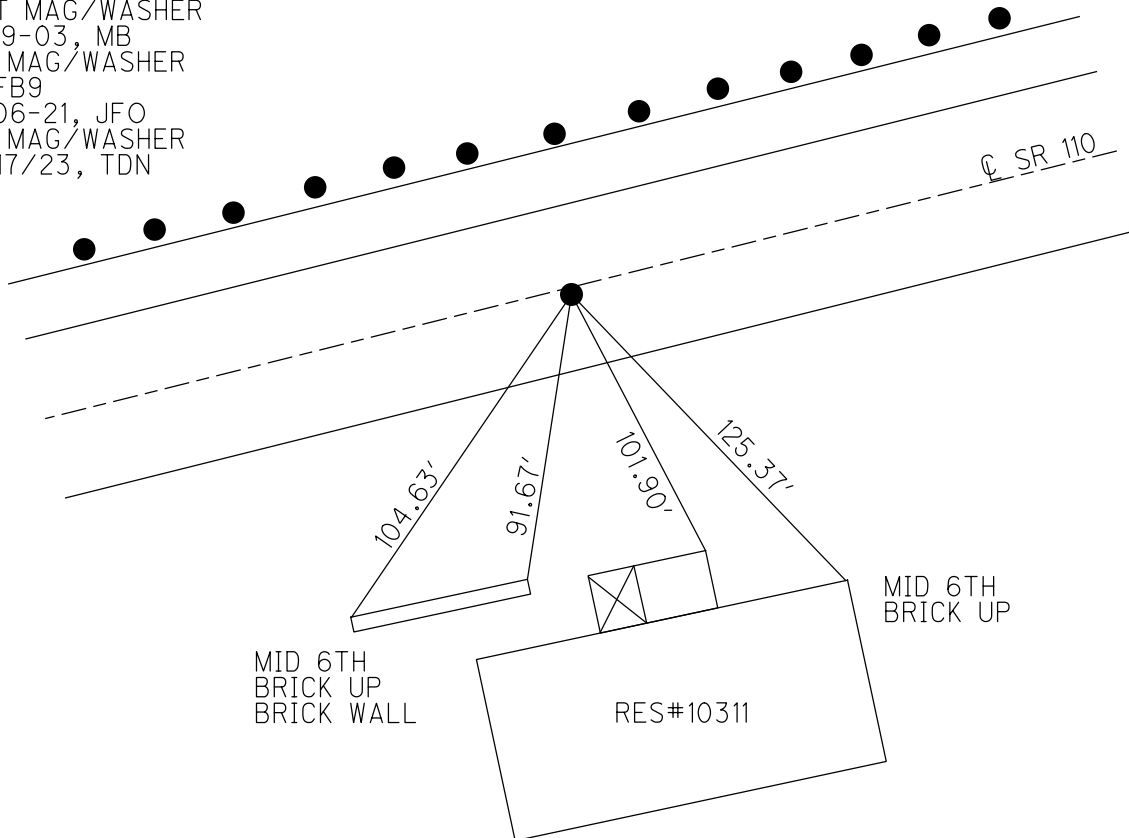
PERSONNEL \_\_\_\_\_ REFERENCE NO. 9 B SHEET 26 OF 44  
 NOTES ASTON DATE 8/17/23 ROUTE SR 110  
 H.C. NIESE WEATHER WINDY COUNTY HENRY  
 R.C. RHOADES TEMP. 75° TOWNSHIP HARRISON  
AUBLE SECTION 9  
 DWG BY RHOADES PID 94321 T 5 N R 7 E

TYPE MONUMENT MAG/WASHER  
 ON SURFACE - ~~BELOW~~ ON \_\_\_\_\_  
 OFFSET  $\odot$  PAVEMENT 0.5' LT : RT  
11.0' TO LT EDGE PAVEMENT  
 S.L.M. 204+83.72



HORZ.DATUM: NAD83 (2011) GEOID: NAVD88 2018  
 GRID: NORTHING: 637601.696 EASTING: 1539659.007

RECORD: T.S.  
 STA 209+95.29  
 $\Delta = 24^\circ 51' 30''$  RT  
 DC =  $4^\circ$   
 CS = 400'  
 TS = 516.59'  
 FD P.K. WASHER  
 4-25-03  
 SET MAG/WASHER  
 6-19-03, MB  
 FD MAG/WASHER  
 REFB9  
 5-06-21, JFO  
 FD MAG/WASHER  
 8/17/23, TDN



O.D.O.T. DISTRICT 2 SURVEY OFFICE

PERSONNEL

REFERENCE NO. 9-B

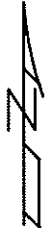
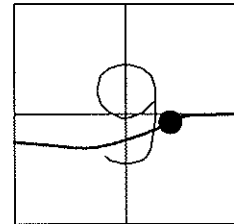
SHEET 13 OF 26

NOTES BRUMBAUGH  
 H.C. BARNHISEL  
 R.C. RYALL  
GLASS

DATE 4-25-03  
 WEATHER CLOUD  
 TEMP. +60°

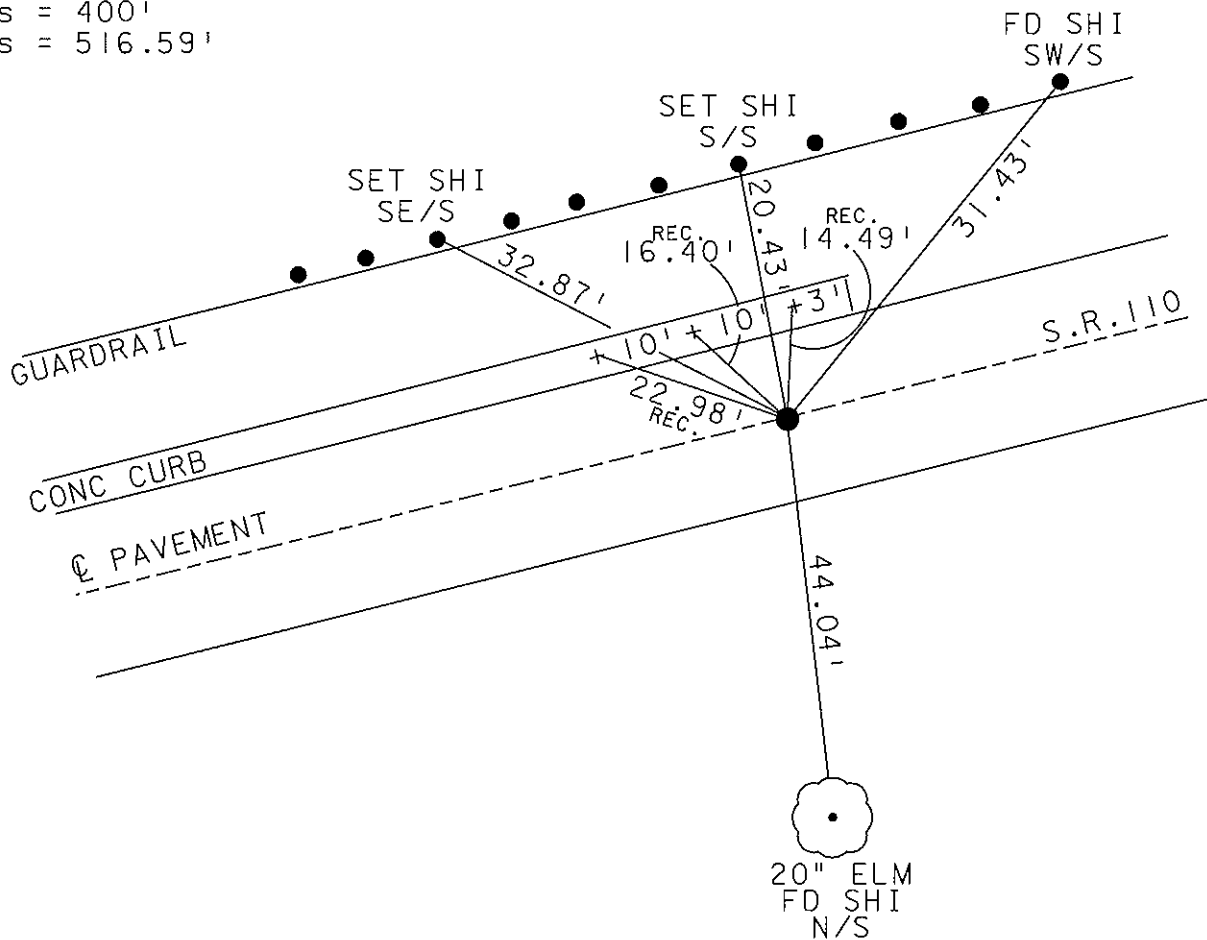
ROUTE S.R. 110  
 COUNTY HENRY  
 TOWNSHIP HARRISON  
 SECTION 9  
T 5 N R 7 E

TYPE MONUMENT P.K./WASHER  
 ON SURFACE - ~~BELOW~~ YES  
 @ PAV'T - RIGHT 0.5'  
11.0' TO LT. EDGE PAVEMENT  
 S.L.M. 204+70



RECORD T.S.  
 STA 209+95.29  
 DELTA = 24°-51'-30" RT.  
 Dc = 4°  
 Cs = 400'  
 Ts = 516.59'

RESET MAG NAIL & WASHER  
 6-19-03  
 MB



O.D.O.T. DISTRICT 2 SURVEY OFFICE

PERSONNEL \_\_\_\_\_

REFERENCE NO. 9B

SHEET 21 OF 34

NOTES LOEHRKE

H.C. CURTIS

R.C. ROMETO

DATE 5-28-92

WEATHER CLEAR

TEMP. +70

ROUTE S.R. 110

COUNTY HENRY

TOWNSHIP HARRISON

SECTION 9

Set P.K./WASHER  
10-27-92

T 5 N R 7 E

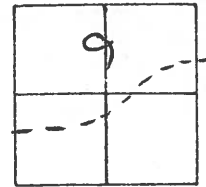
TYPE MONUMENT Sm R.R. Spike

ON SURFACE - BELOW Yes

LEFT-~~E~~ PAV'T. - RIGHT 0.5'

110 TO Lt EDGE PAVEMENT

S.L.M. 204+70



Rec. T.S.

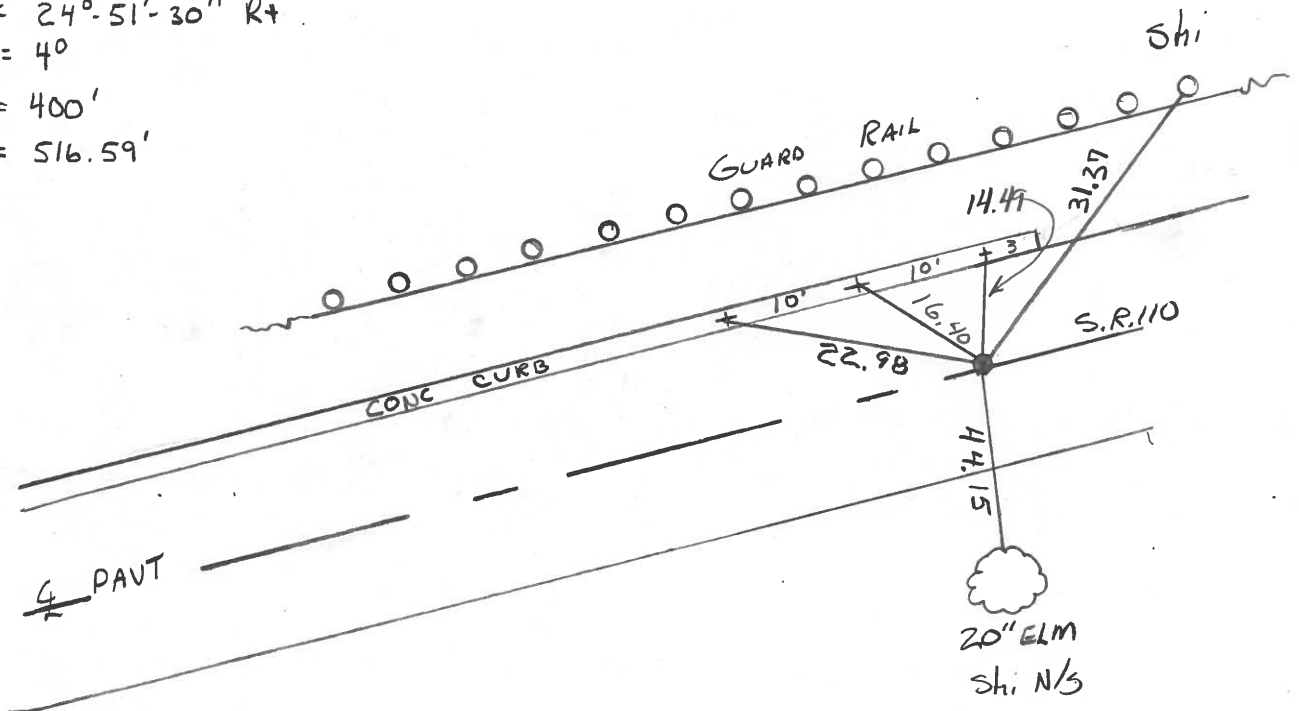
Sta 209+95.29

$\Delta = 24^{\circ} 51' 30''$  Rt

$D_c = 4^{\circ}$

$C_s = 400'$

$T_s = 516.59'$



County HENRY S.R. 116

Date 2-6-84

Township HARRISON

Weather FLURRIES

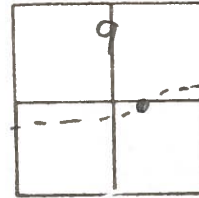
Section 9

Temp. +22

T5N, R7E

Personnel	<u>BARNHISEL</u>	<u>MC</u>
	<u>HOUSEHOLDER</u>	<u>RL</u>
	<u>HOFFMAN</u>	
	<u>LOEHRKE</u>	

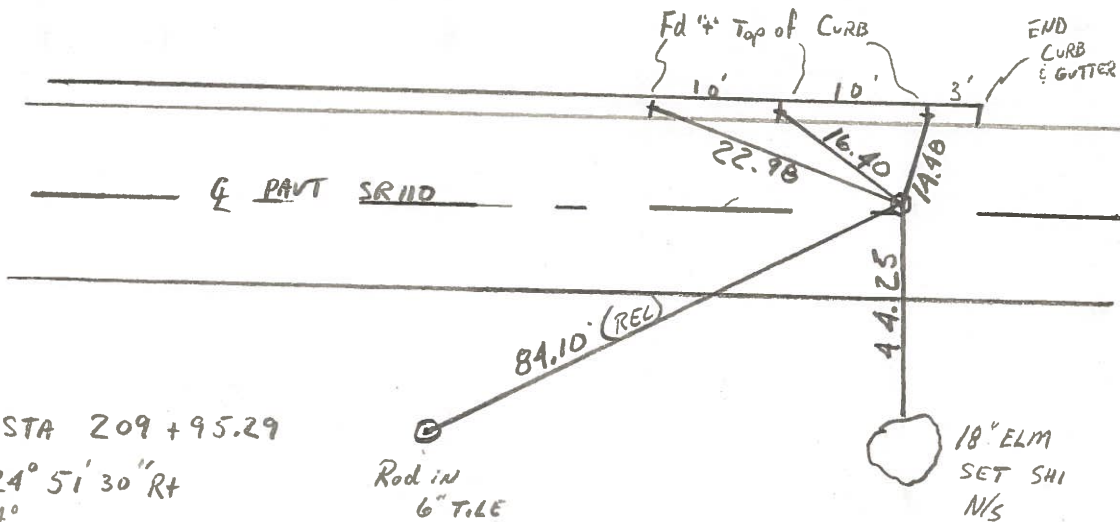
9B



Fd  $\frac{3}{4}$ " PIPE 1" BELOW SURFACE  
 0.2 Lt. F & PAVT  
 119 TO REP  
 113 TO LEP

SLM = 204+81

SET SMALL P.R. SPK.  
 6/13/84  
 M.D.B.



TS: STA 209+95.29  
 $\Delta = 24^\circ 51' 30''$  Rt  
 $D_c = 4^\circ$   
 $C_s = 400'$   
 $T_s = 516.59'$

PERSONNEL Red Beach TITLE \_\_\_\_\_ PERSONNEL Newcomb TITLE \_\_\_\_\_ COUNTY HENRY DATE Sept 1972  
 PERSONNEL Knape TITLE \_\_\_\_\_ S. R. 110 WEATHER \_\_\_\_\_  
 SEC. 9 Harrison Twp. TEMP. \_\_\_\_\_

DESCRIPTION \_\_\_\_\_ CONTROL POINTS \_\_\_\_\_ JOB NO. \_\_\_\_\_

