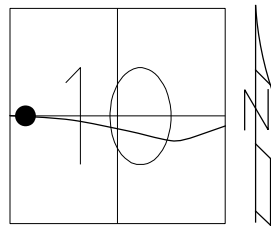


O.D.O.T. DISTRICT 2 SURVEY OFFICE (USE ONLY)

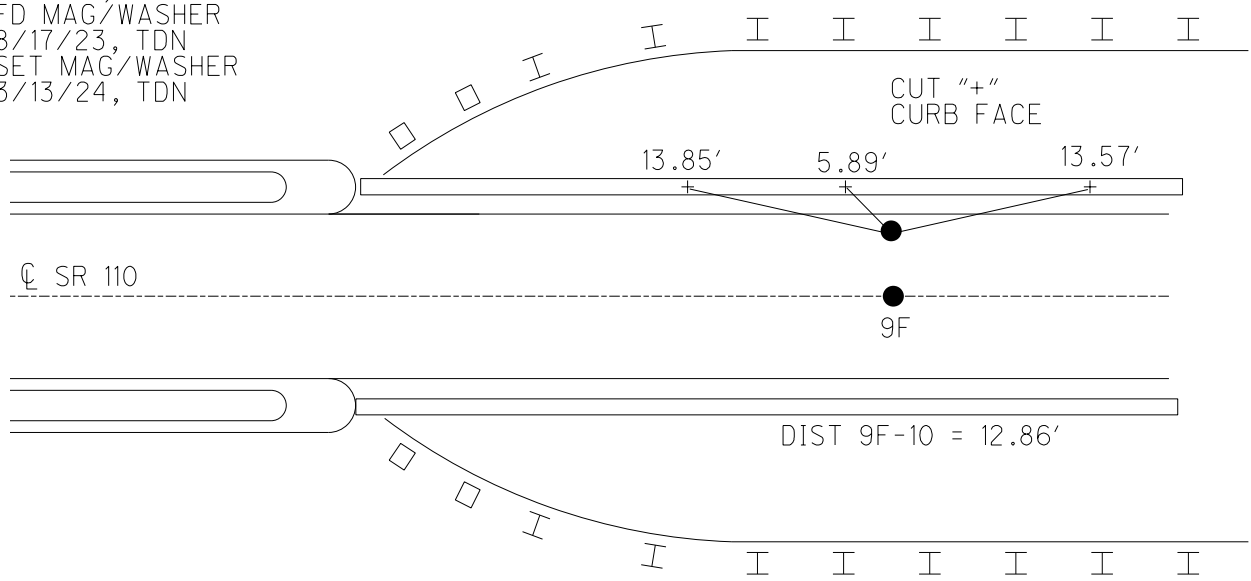
PERSONNEL _____ REFERENCE NO. 10 SHEET 39 OF 51
 NOTES MILLER DATE 3/13/24 ROUTE 44
 H.C. NIESE WEATHER SUNNY COUNTY HENRY
 R.C. RHOADES TEMP. 55° TOWNSHIP HARRISON
 DWG BY RHOADES PID 94321 SECTION 10
 T 5 N R 7 E

TYPE MONUMENT MAG/WASHER
 ON SURFACE - ~~BELOW~~ ON
 OFFSET \odot PAVEMENT 12.7' LT : ~~RT~~
0.7' LT OF RT EDGE PAVEMENT
 STATION: 224+66.33



HORIZ.DATUM: NAD83(2011) GEOID: NAVD88 2012A
 GRID: NORTHING: 637947.616 EASTING: 1541587.452

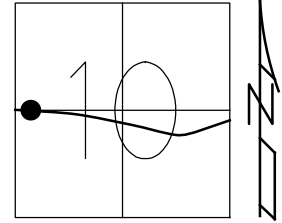
RECORD: P.I.
 CMON W/ DAMAGED TOP
 REF TO 1/2" IPIN
 STA. 229+84.15
 $\Delta = 8^\circ 50' RT$
 $D = 1^\circ 20'$
 FD MAG/WASHER
 11/1/04, MB
 SET MAG/WASHER
 6/19/03, MB
 FD MAG/WASHER
 REF10
 6/15/18, JLL
 SET MAG/WASHER
 7/19/21, DSA
 FD MAG/WASHER
 8/17/23, TDN
 SET MAG/WASHER
 3/13/24, TDN



O.D.O.T. DISTRICT 2 SURVEY OFFICE (USE ONLY)

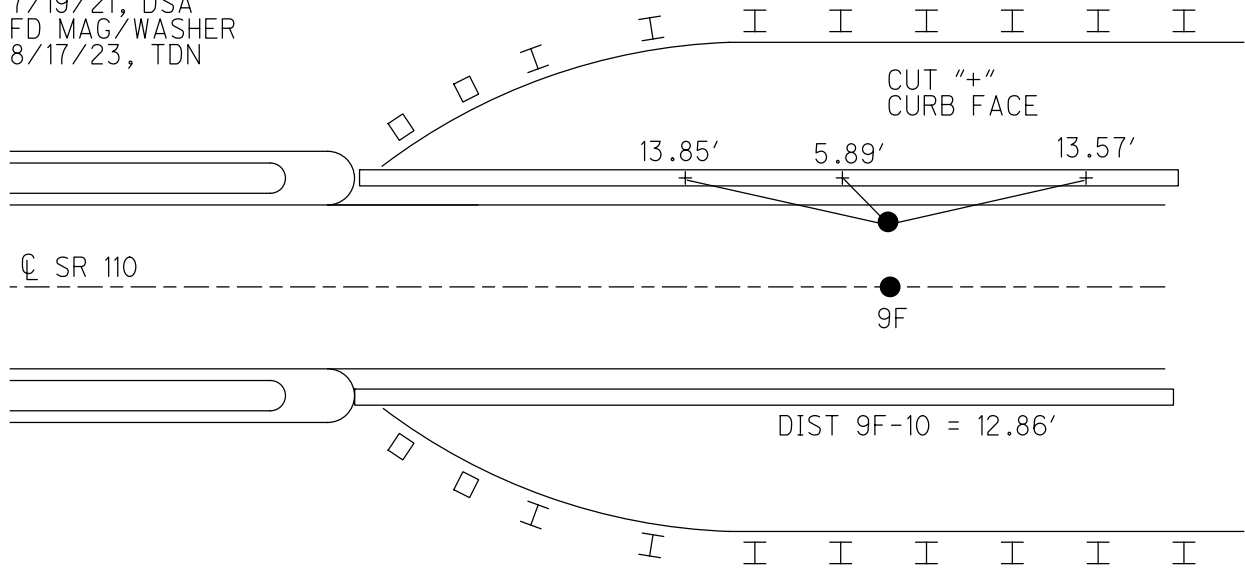
PERSONNEL	REFERENCE NO. <u>10</u>	SHEET <u>32</u> OF <u>43</u>
NOTES <u>ASTON</u>	DATE <u>8/17/23</u>	ROUTE <u>44</u>
H.C. <u>NIESE</u>	WEATHER <u>WINDY</u>	COUNTY <u>HENRY</u>
R.C. <u>RHOADES</u>	TEMP. <u>73°</u>	TOWNSHIP <u>HARRISON</u>
<u>AUBLE</u>		SECTION <u>10</u>
DWG BY <u>RHOADES</u>	PID <u>94321</u>	T <u>5</u> N R <u>7</u> E

TYPE MONUMENT MAG/WASHER
 ON SURFACE - ~~BELOW~~ ON
 OFFSET \odot PAVEMENT 12.7' LT : ~~RT~~
 0.7' LT OF RT EDGE PAVEMENT
 STATION: 224+66.33



HORIZ.DATUM: NAD83(2011) GEOID: NAVD88 2012A
 GRID: NORTHING: 637947.616 EASTING: 1541587.452

RECORD: P.I.
 CMON W/ DAMAGED TOP
 REF TO 1/2" IPIN
 STA 229+84.15
 = 8°50' RT
 D = 1°-20'
 FD MAG/WASHER
 11/1/04, MB
 SET MAG/WASHER
 6/19/03, MB
 FD MAG/WASHER
 REF10
 6/15/18, JLL
 SET MAG/WASHER
 7/19/21, DSA
 FD MAG/WASHER
 8/17/23, TDN



O.D.O.T. DISTRICT 2 SURVEY OFFICE (USE ONLY)

PERSONNEL _____

REFERENCE NO. 10

SHEET 30 OF 43

NOTES RHOADES

DATE 6/15/18

ROUTE SR 110

H.C. LEU

WEATHER SUNNY

COUNTY HENRY

R.C. TRENKA

TEMP. 73°

TOWNSHIP HARRISON

DWG BY AUBLE PID 104940

SECTION 10

T 5 N R 7 E

TYPE MONUMENT MAG/WASHER

ON SURFACE - ~~BELOW~~ ON

OFFSET CL PAVEMENT 12.7' LT : ~~RT~~

0.7' LT OF RT EDGE PAVEMENT

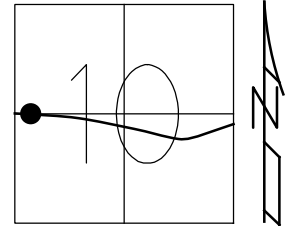
STATION: 224+56.42

HORZ.DATUM: NAD83(2011)

GEOID: NAVD88 2012A

GRID: NORTHING: 637947.616

EASTING: 1541587.452



RECORD:

DIST 9F-10 = 12.86'

CONC. MON W/ DAMAGED TOP

REF ARE TO 1/2" IRON PIN

REC P.I. STA 229+84.15

DELTA = 8°-50' RT

D = 1°-20'

FD MAG/WASHER

11/1/04, MB

SET MAG/WASHER

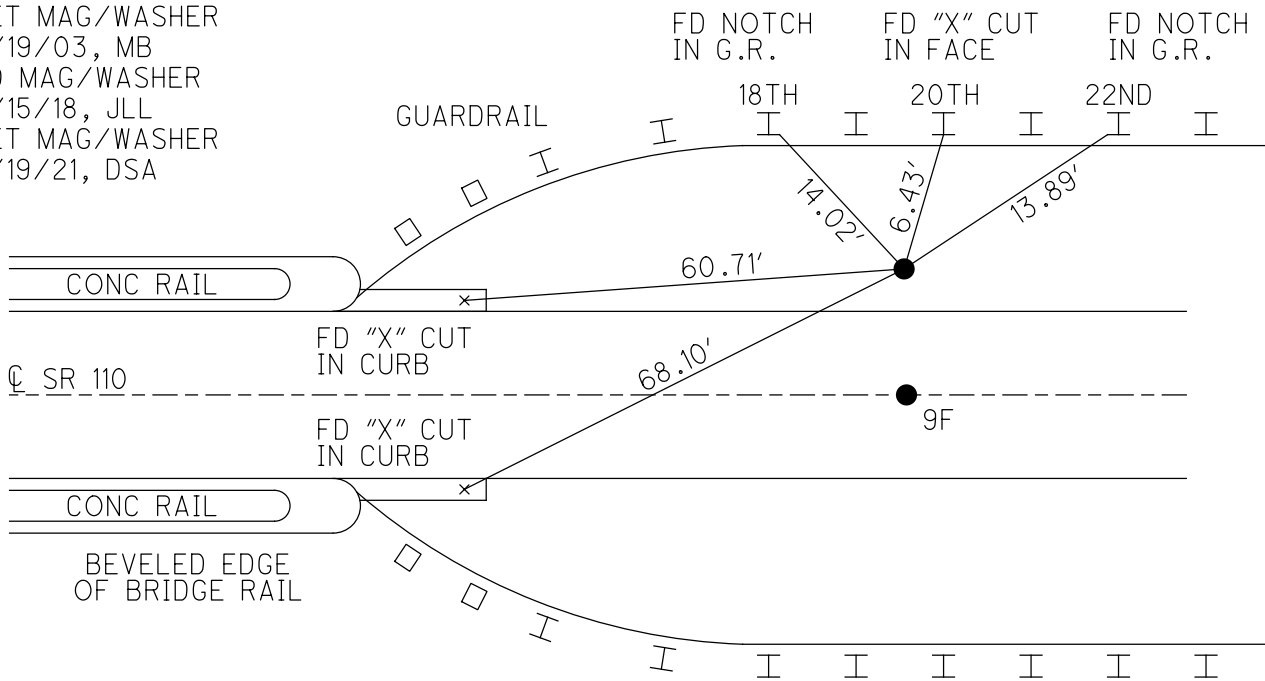
6/19/03, MB

FD MAG/WASHER

6/15/18, JLL

SET MAG/WASHER

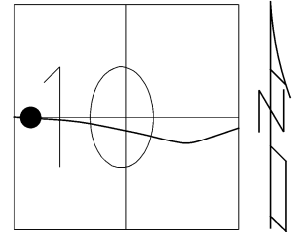
7/19/21, DSA



O.D.O.T. DISTRICT 2 SURVEY OFFICE (USE ONLY)

PERSONNEL _____ REFERENCE NO. 10 SHEET 30 OF 43
 NOTES RHOADES DATE 6-15-18 ROUTE SR 110
 H.C. LEU WEATHER SUNNY COUNTY HENRY
 R.C. TRENKA TEMP. 73° TOWNSHIP HARRISON
 SECTION 10
 DWG BY AUBLE PID 104940 T 5 N R 7 E

TYPE MONUMENT MAG/W
 ON SURFACE - ~~BELOW~~ ON
 OFFSET \odot PAVEMENT 12.7' LT : RT
 _____ TO _____ EDGE PAVEMENT
 STATION: 224+53

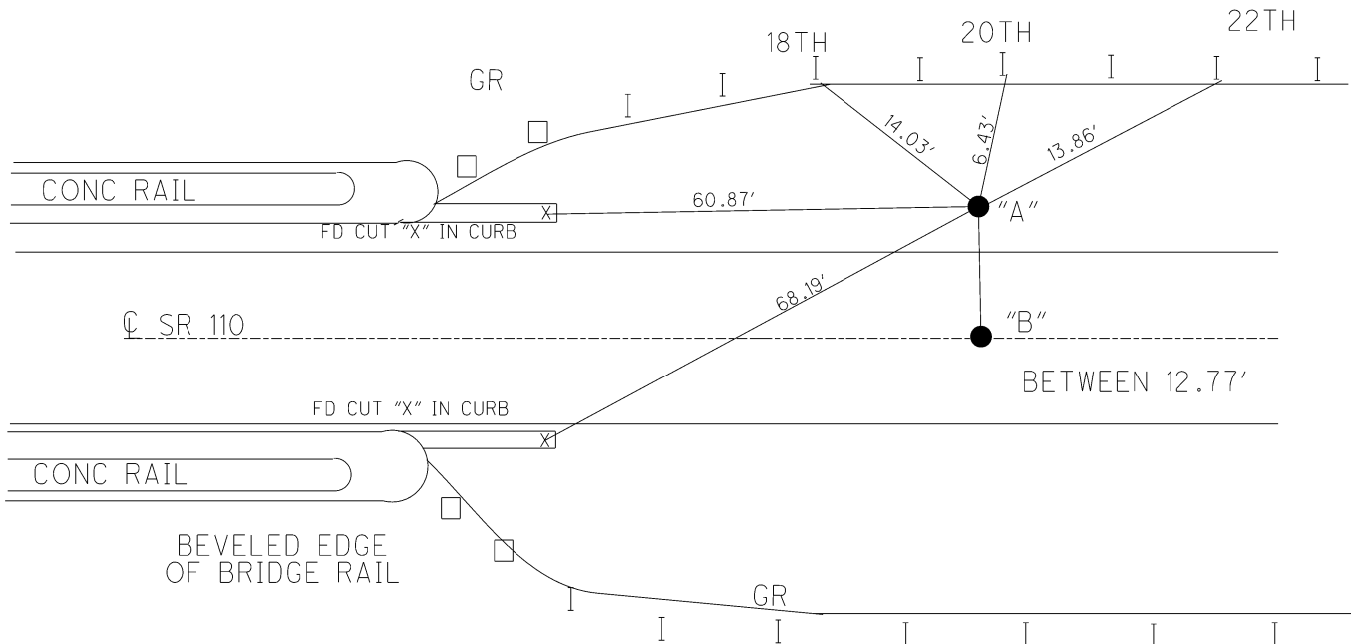


HORIZ.DATUM: NAD83(2011) GEOID: 2012A
 GRID: NORTHING: 637947.616 EASTING: 1541587.452

RECORD:
 CONC. MON W/ DAMAGED TOP
 REF ARE TO " IRON PIN
 REC P.I. STA 229+84.15
 DELTA = 8°-50' RT
 D = 1°-20'
 FD MAG/WASHER
 11-1-04, MB
 RESET MAG/WASHER
 6-19-03, MB
 FD MAG/W REF10
 6-15-18, JLL

DIST 9F-10 = 12.86'

FD NOTCH CUTS 18TH AND 22TH
 GR POST.
 "X" CUT IN FACE OF 20TH STEEL POST



O.D.O.T. DISTRICT 2 SURVEY OFFICE

PERSONNEL

REFERENCE NO. 10

SHEET 17 OF 26

NOTES BARNHISEL

DATE 11/01/04

ROUTE S.R. 110

H.C. CANTERBURY

WEATHER CLOUDY

COUNTY HENRY

R.C. HOMAN

TEMP. +50°

TOWNSHIP HARRISON

SECTION 10

T 5 N R 7 E

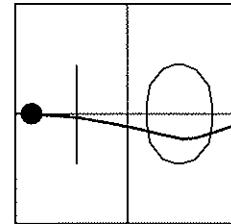
TYPE MONUMENT "A" = MAG/WASHER "B" = MAG/WASHER

ON SURFACE - ~~BELOW~~ YES

LEFT-CL PAV'T-RIGHT "A"-12.7' LT OF CL PAV'T
"A"-0.7' LT OF RT ED.

TO EDGE PAVEMENT "B" ON CL

S.L.M. 224+53



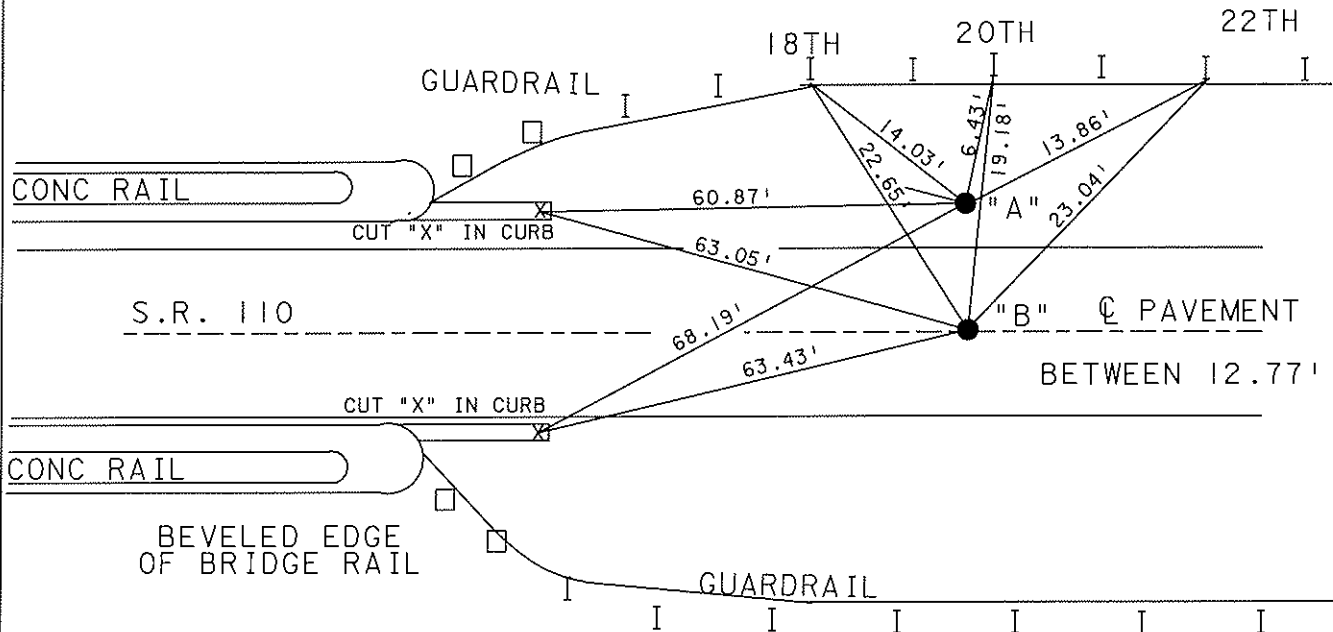
PT "A"

CONC. MON W/ DAMAGED TOP
 REF ARE TO 1/2" IRON PIN
 REC P.I. STA 229+84.15
 DELTA = 8°-50' RT
 D = 1°-20'

PT B
 ON CL PAVT
 C.P.O.C.

RESET MAG NAIL & WASHER
 6-19-03
 MB

NOTCH CUT 18TH AND 22TH
 GUARDRAIL POST.
 "X" CUT IN FACE OF 20TH STEEL POST



O.D.O.T. DISTRICT 2 SURVEY OFFICE

PERSONNEL

REFERENCE NO. 10

SHEET 17 OF 26

NOTES CANTERBURY

DATE 4-28-03

ROUTE S.R. 110

H.C. BROWN

WEATHER SUNNY

COUNTY HENRY

R.C. BEAMOUNT

TEMP. +55°

TOWNSHIP HARRISON

SECTION 10

T 5 N R 7 E

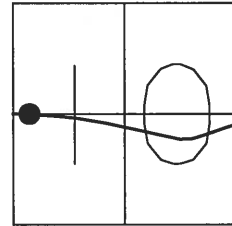
TYPE MONUMENT "A" = CONC. MON W/PIN "B" = PK/WASHER

ON SURFACE - ~~BELOW~~ YES

LEFT-CL PAV'T-RIGHT "A" - 13.0' LT OF CL PAV'T
"A" - 1.4' LT OF RT ED.

"B" 12.0' TO LT. EDGE PAVEMENT "B" ON CL

S.L.M. 224+53



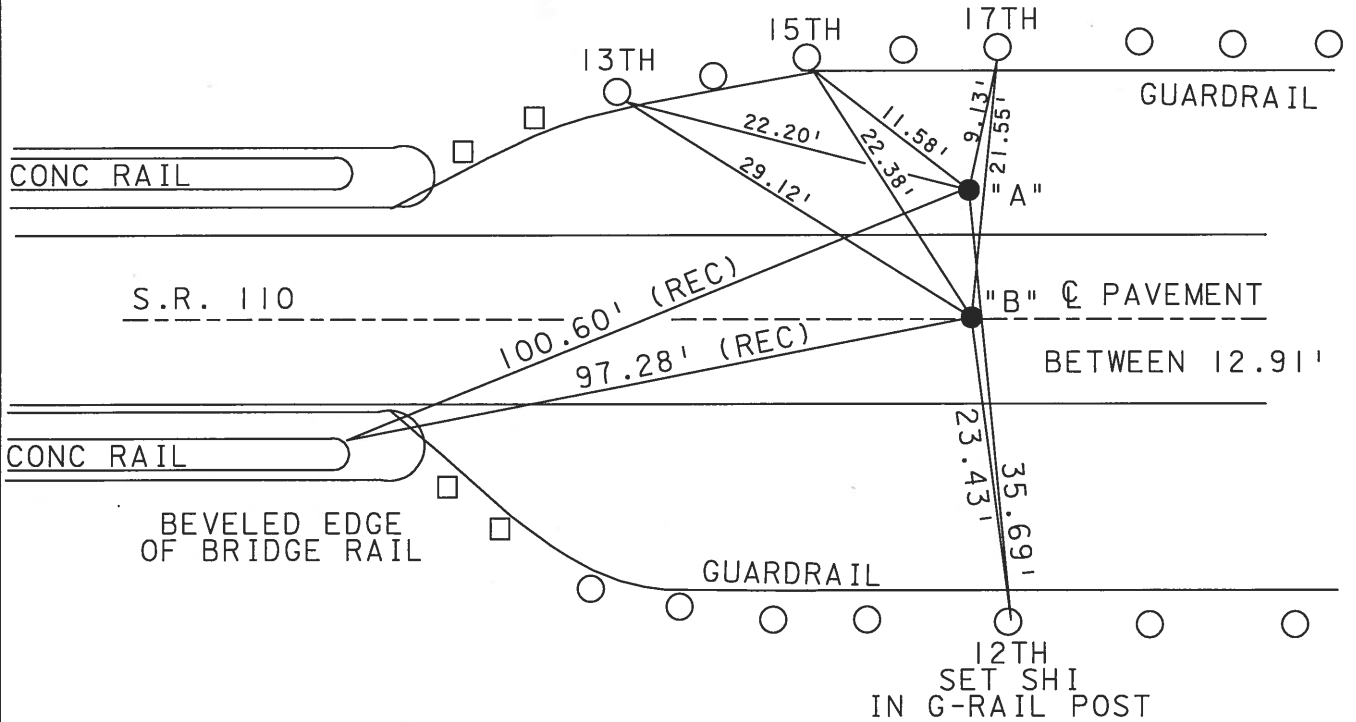
PT "A"

CONC. MON W/ DAMAGED TOP
REF ARE TO 1/2" IRON PIN
REC P.I. STA 229+84.15
DELTA = 8°-50' RT
D = 1°-20'

PT B
ON CL PAVT
C.P.O.C.

RESET MAG NAIL & WASHER
6-19-03
MB

SHI IN 13TH 15TH 17TH
ROUND GUARDRAIL POST



O.D.O.T. DISTRICT 2 SURVEY OFFICE

PERSONNEL _____

REFERENCE NO. 10

SHEET 25 OF 34

NOTES LOEHRKE

H.C. CURTIS

R.C. ROMETO

DATE 5-28-92

WEATHER CLEAR

TEMP. +72

ROUTE S.R.110

COUNTY HENRY

TOWNSHIP HARRISON

SECTION 10

T. 5 N. R. 7 E

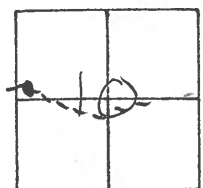
TYPE MONUMENT A-PK / WASHER B= Sm R.R. Spike

ON SURFACE - BELOW Yes

LEFT- & PAV'T. - RIGHT A Lt B - ON &

11.4 TO Lt EDGE PAVEMENT

S.L.M. 224+53



CONC. MON W/ DAMAGED TOP

REF ARE TO 1/2" IRON PIN

REC. P.I. STA 229+84.15

$\Delta = 8^{\circ}-50'$ Rt

$D = 1^{\circ}-20'$

Pt. A

A, B Set P.K.

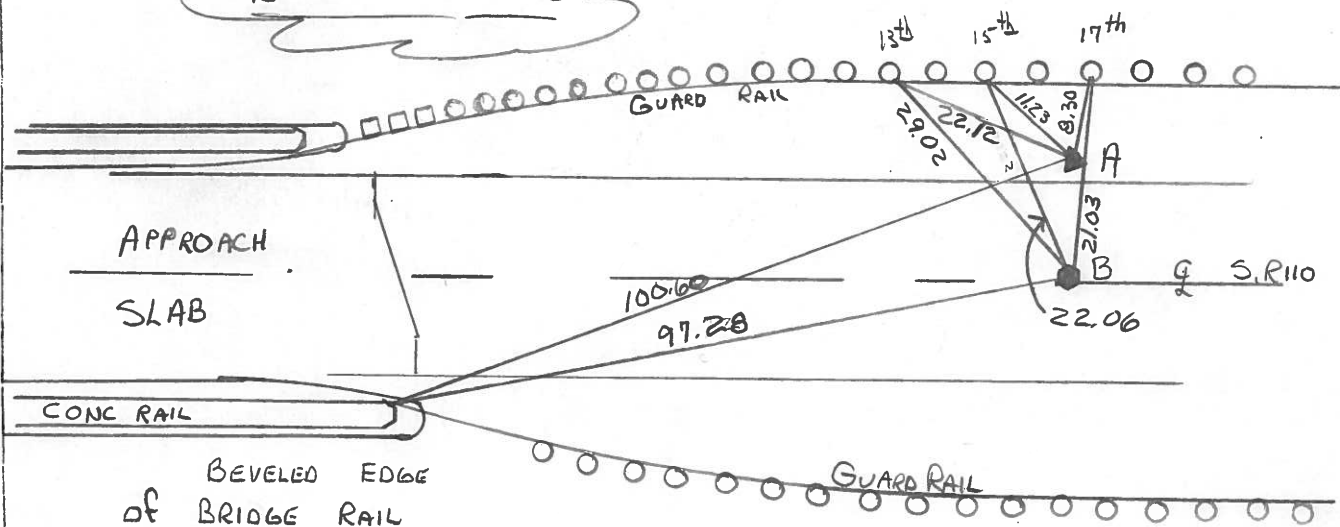
Sm. R.R. SPIKE WASHER

ON & PAVT 10-27-92

"C.P.O.C."

BETWEEN - 13.08

Sh's in 13th 15th & 17th
ROUND GUARD RAIL POST



County HENRY S.R. 110

Date 2-7-84

Township HARRISON

Weather PT. CLOUDY

Section 10

Temp. +16°

T5N, R7E

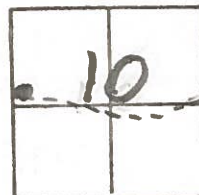
Personnel BARNHISEL HC

HOUSEHOLDER RC

HOFFMAN

LOEHRKE

10



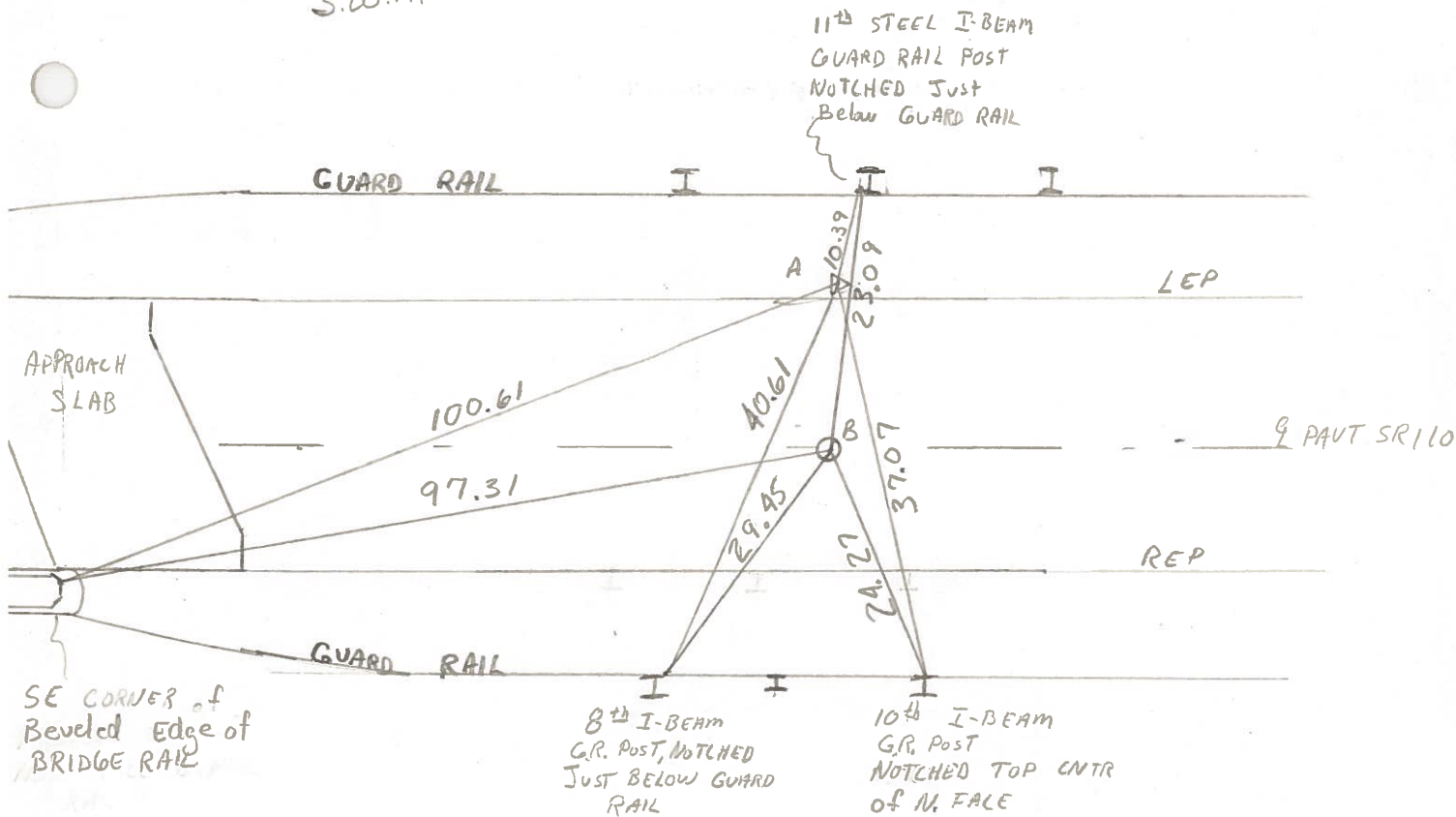
PTA. FA CONC MON w/DAMAGED TOP
Ref to 1/2" IRON ROD.
PI STA 229+84.15
 $\Delta = 8^{\circ} 50' R$
 $D = 1^{\circ} 20'$
1.3 Lt of LEP

PT.'B' FA 1/2 pipe @ SURFACE
CPOC ON E PART SR110
11.6 TO LEP
11.6 TO REP

SLM = 224 + 63

SET SMALL R.R.S.
6/6/84
S.W.H.

SET P.K./WASHER
6/6/84
S.W.H.



HEN 110-04.19

PT'A' to PT'B' = 13.09