

O.D.O.T. DISTRICT 2 SURVEY OFFICE (USE ONLY)

PERSONNEL _____

REFERENCE NO. 10 B

SHEET 41 OF 51

NOTES ASTON DATE 3/15/24
 H.C. NIESE WEATHER SUNNY
 R.C. ASTON TEMP. 55°

ROUTE SR 110
 COUNTY HENRY
 TOWNSHIP HARRISON
 SECTION 10
 T 5 N R 7 E

DWG BY RHOADES PID 94321

TYPE MONUMENT MAG/WASHER

ON SURFACE - ~~BELOW~~ ON

OFFSET \odot PAVEMENT 0.4' ~~±~~ : RT

11.4' TO LT EDGE PAVEMENT

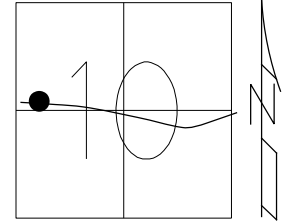
STATION: 232+81.90

HORZ.DATUM: NAD83(2011)

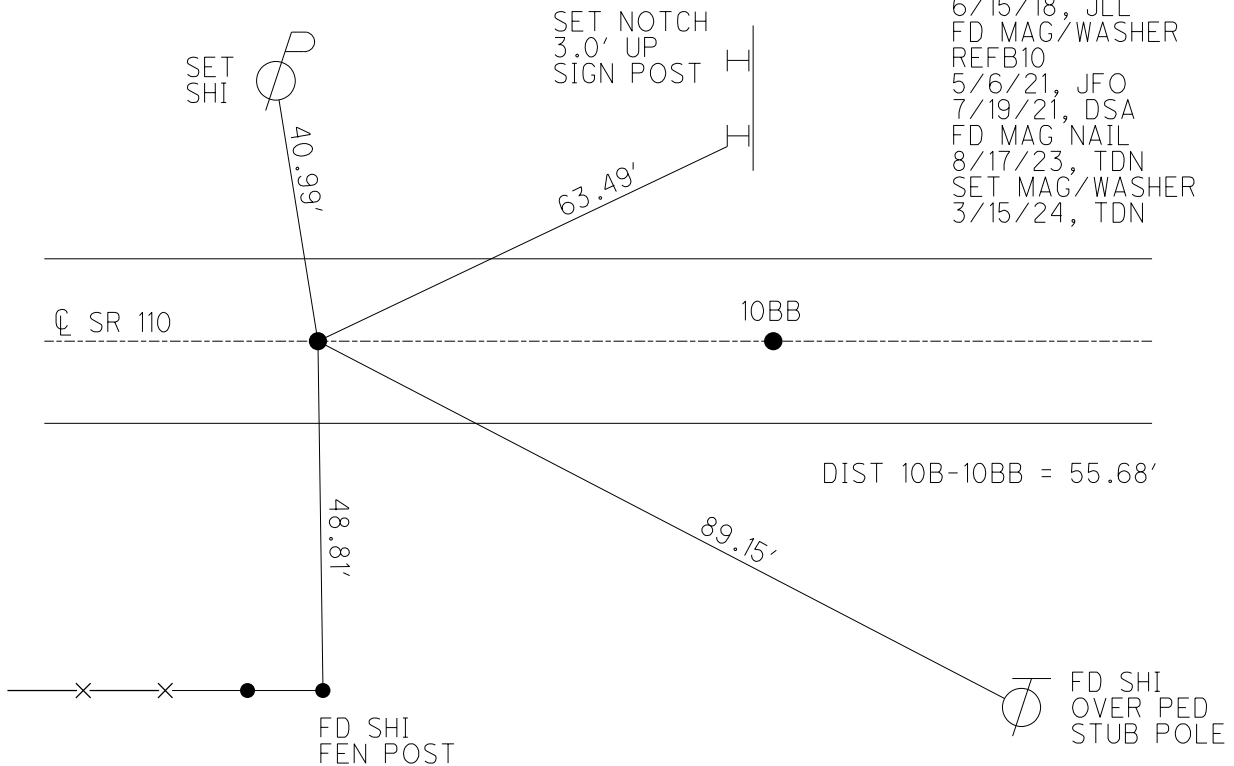
GEOID: NAVD88 2012A

GRID: NORTHING: 637876.002

EASTING: 1542400.536



RECORD:
 FD P.K.WASHER
 4/28/03, MC
 SET MAG/WASHER
 6/19/03, MB
 FD MAG/WASHER
 REFB10
 6/15/18, JLL
 FD MAG/WASHER
 REFB10
 5/6/21, JFO
 7/19/21, DSA
 FD MAG NAIL
 8/17/23, TDN
 SET MAG/WASHER
 3/15/24, TDN



O.D.O.T. DISTRICT 2 SURVEY OFFICE (USE ONLY)

PERSONNEL

REFERENCE NO. 10 B

SHEET 34 OF 44

NOTES ASTON

DATE 8/17/23

ROUTE SR 110

H.C. NIESE

WEATHER WINDY

COUNTY HENRY

R.C. RHOADES
AUBLE

TEMP. 73°

TOWNSHIP HARRISON

DWG BY RHOADES PID 94321

SECTION 10

T 5 N R 7 E

TYPE MONUMENT MAG NAIL

ON SURFACE - ~~BELOW~~ ON

OFFSET 11.4' \perp PAVEMENT 0.03' ~~LT~~ : RT

TO LT EDGE PAVEMENT

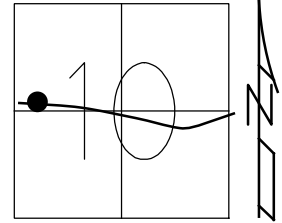
STATION: 232+81.90

HORIZ.DATUM: NAD83(2011)

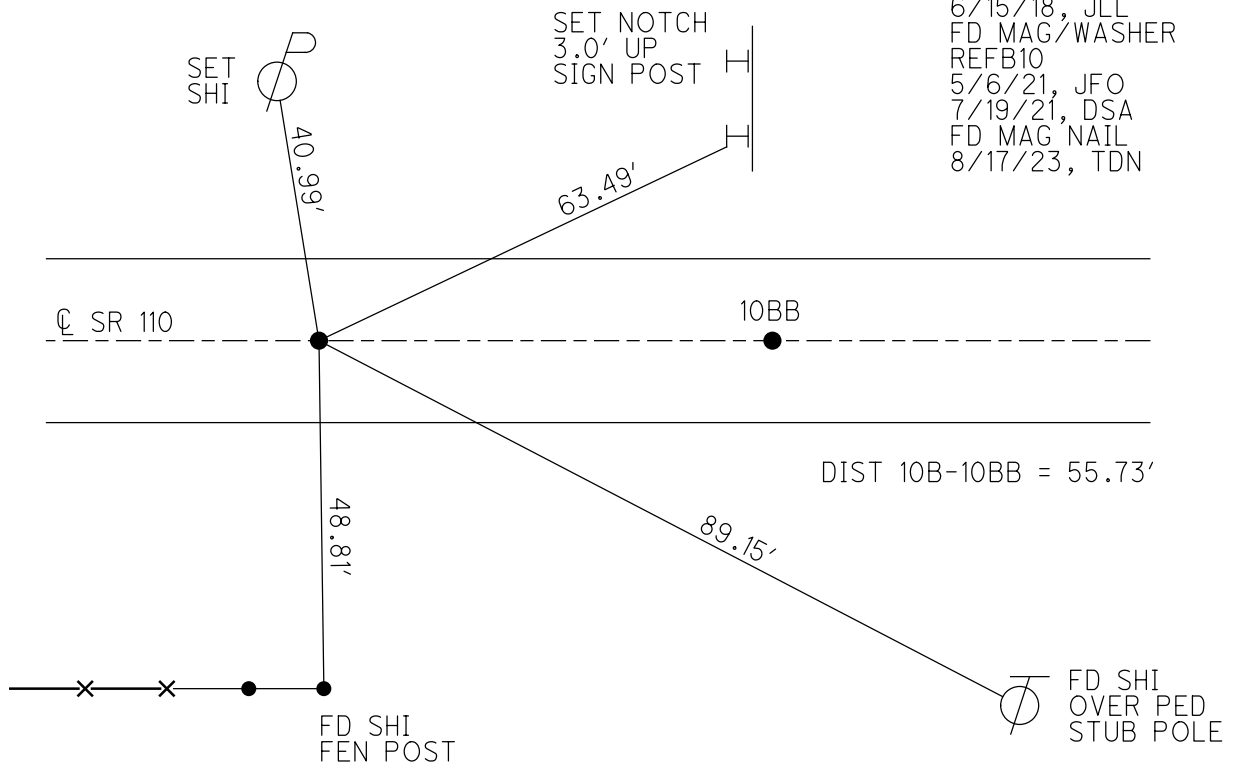
GEOID: NAVD88 2012A

GRID: NORTHING: 637876.002

EASTING: 1542400.536



RECORD:
FD P.K. WASHER
4/28/03, MC
SET MAG/WASHER
6/19/03, MB
FD MAG/WASHER
REFB10
6/15/18, JLL
FD MAG/WASHER
REFB10
5/6/21, JFO
7/19/21, DSA
FD MAG NAIL
8/17/23, TDN



O.D.O.T. DISTRICT 2 SURVEY OFFICE (USE ONLY)

PERSONNEL

REFERENCE NO. 10 B

SHEET 32 OF 43

NOTES CANTERBURY

DATE 4/28/03

ROUTE SR 110

H.C. BROWN

WEATHER SUNNY

COUNTY HENRY

R.C. BEAMOUNT

TEMP. 55°

TOWNSHIP HARRISON

DWG BY NIESE PID 104940

SECTION 10

T 5 N R 7 E

TYPE MONUMENT P.K./WASHER

ON SURFACE - ~~BELOW~~ ON

OFFSET 11.4' \odot PAVEMENT 0.03' ~~LT~~ : RT

11.4' TO LT EDGE PAVEMENT

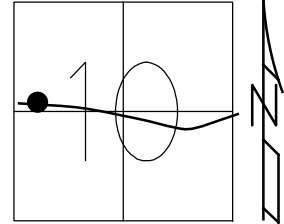
STATION: 232+71.32

HORIZ.DATUM: NAD83(2011)

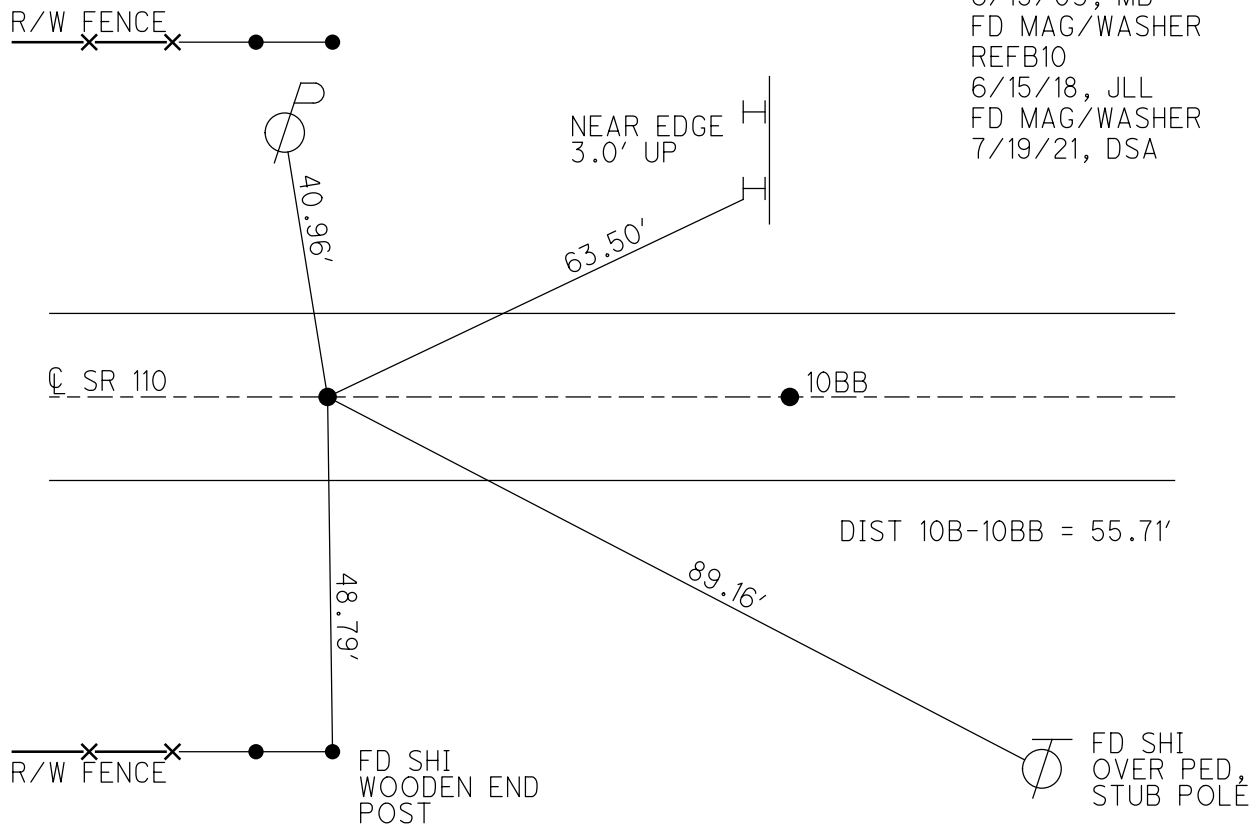
GEOID: NAVD88 2012A

GRID: NORTHING: 637876.033

EASTING: 1542400.542



RECORD:
 FD P.K.WASHER
 4/28/03, MC
 RESET MAG/WASHER
 6/19/03, MB
 FD MAG/WASHER
 REFB10
 6/15/18, JLL
 FD MAG/WASHER
 7/19/21, DSA



O.D.O.T. DISTRICT 2 SURVEY OFFICE (USE ONLY)

PERSONNEL

REFERENCE NO. 10 B

SHEET 32 OF 43

NOTES CANTERBURY

DATE 4-28-03

ROUTE SR 110

H.C. BROWN

WEATHER SUNNY

COUNTY HENRY

R.C. BEAMOUNT

TEMP. 55°

TOWNSHIP HARRISON

DWG BY AUBLE PID 104940

SECTION 10

T 5 N R 7 E

TYPE MONUMENT PK/W

ON SURFACE - ~~BELOW~~ ON

OFFSET \odot PAVEMENT 0.4' LT : ~~RT~~

11.4' TO LT EDGE PAVEMENT

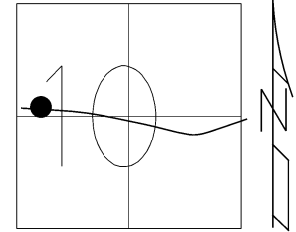
STATION: 232+68

HORZ.DATUM: NAD83(2011)

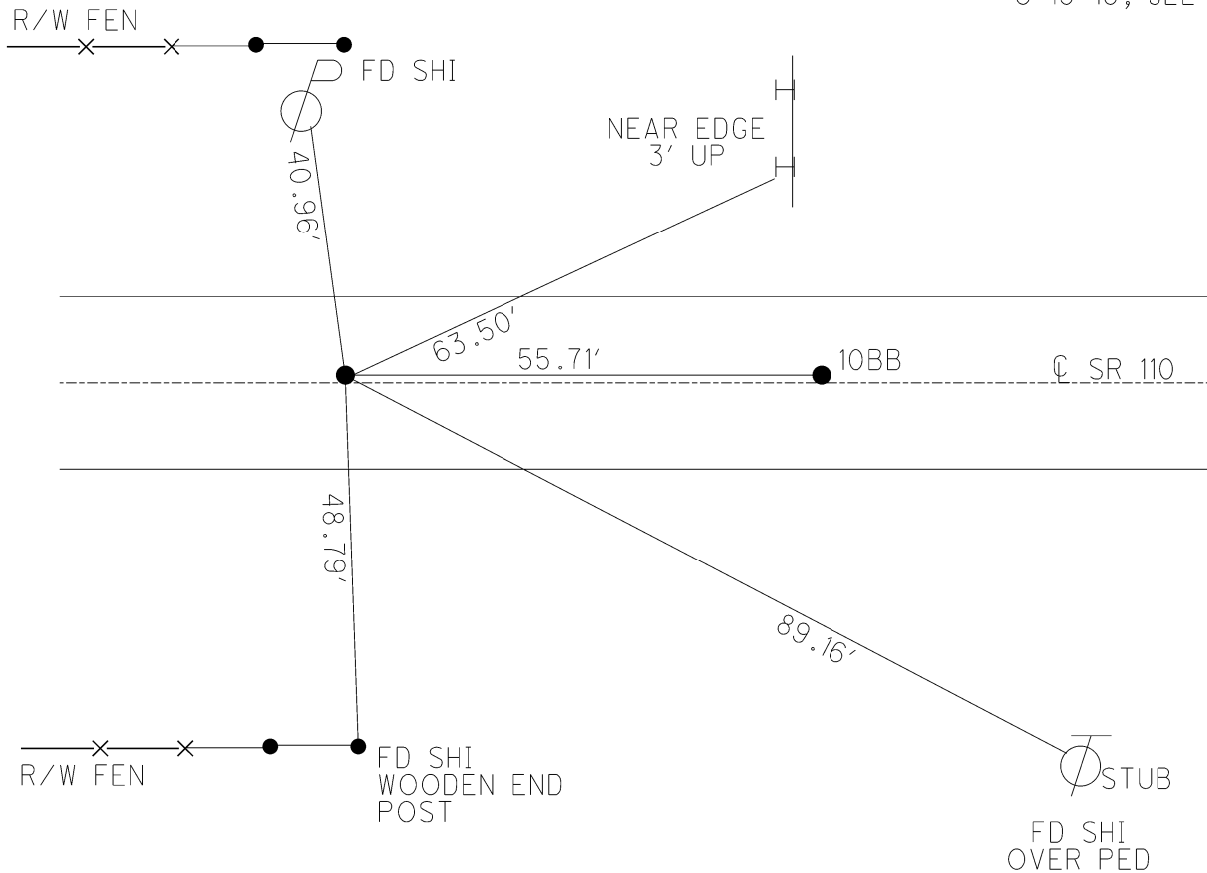
GEOID: 2012A

GRID: NORTHING: 637876.033

EASTING: 1542400.542



RECORD:
RD P.K.WASHER
4-28-03, MC
RESET MAG/WASHER
6-19-03, MB
FD MAG/W REF B10
6-15-18, JLL



O.D.O.T. DISTRICT 2 SURVEY OFFICE

PERSONNEL

REFERENCE NO. 10-B

SHEET 19 OF 26

NOTES CANTERBURY

DATE 4-28-03

ROUTE S.R. 110

H.C. BROWN

WEATHER SUNNY

COUNTY HENRY

R.C. BEAMOUNT

TEMP. +55°

TOWNSHIP HARRISON

SECTION 10

T 5 N R 7 E

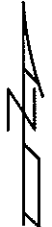
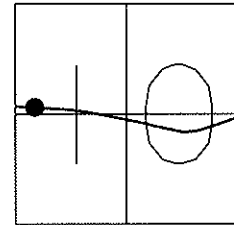
TYPE MONUMENT "A" -PK/WASHER "B" -PK NAIL

ON SURFACE - ~~BELOW~~ YES/BOTH PTS

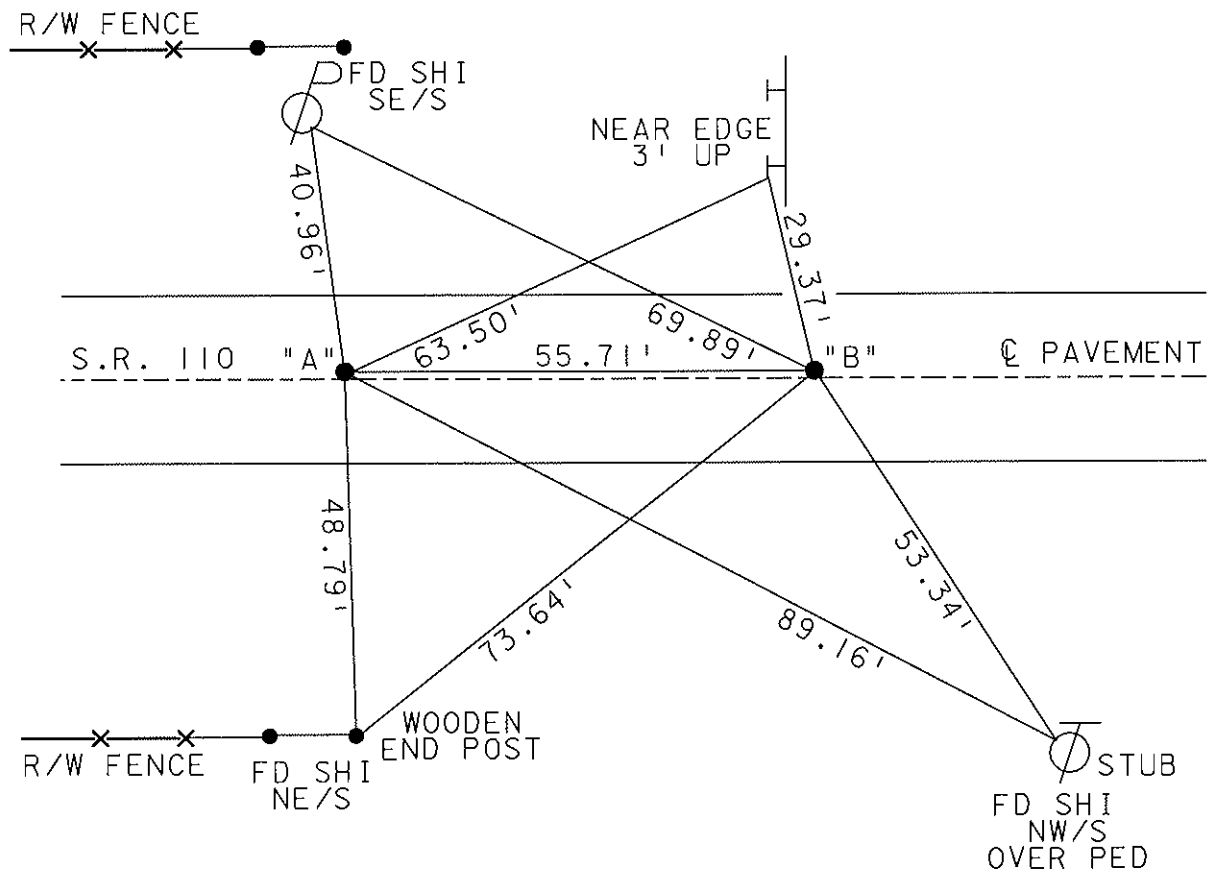
☉ PAV'T - RIGHT 0.4/BOTH PTS

BOTH 1.4' TO RT. EDGE PAVEMENT

S.L.M. 232+68 - "A"



RESET MAG NAILS & WASHERS
6-19-03
MB



O.D.O.T. DISTRICT 2 SURVEY OFFICE

PERSONNEL

REFERENCE NO. 10B

SHEET 27 OF 34

NOTES Loehrke

H.C. Curtis

R.C. Romero

DATE Sept 28

WEATHER Cloudy

TEMP. +55

ROUTE 110

COUNTY HENRY

TOWNSHIP HARRISON

SECTION 10

Set P.K. 10-23-92

T 5 N R 7 E

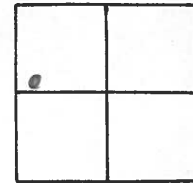
TYPE MONUMENT Small P.K.'s

ON SURFACE - BELOW Yes

LEFT - & PAV'T. - RIGHT 0.4

TO EDGE PAVEMENT

S.L.M. 232 + 68 - A



Between 55.72

