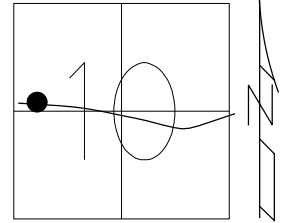


O.D.O.T. DISTRICT 2 SURVEY OFFICE (USE ONLY)

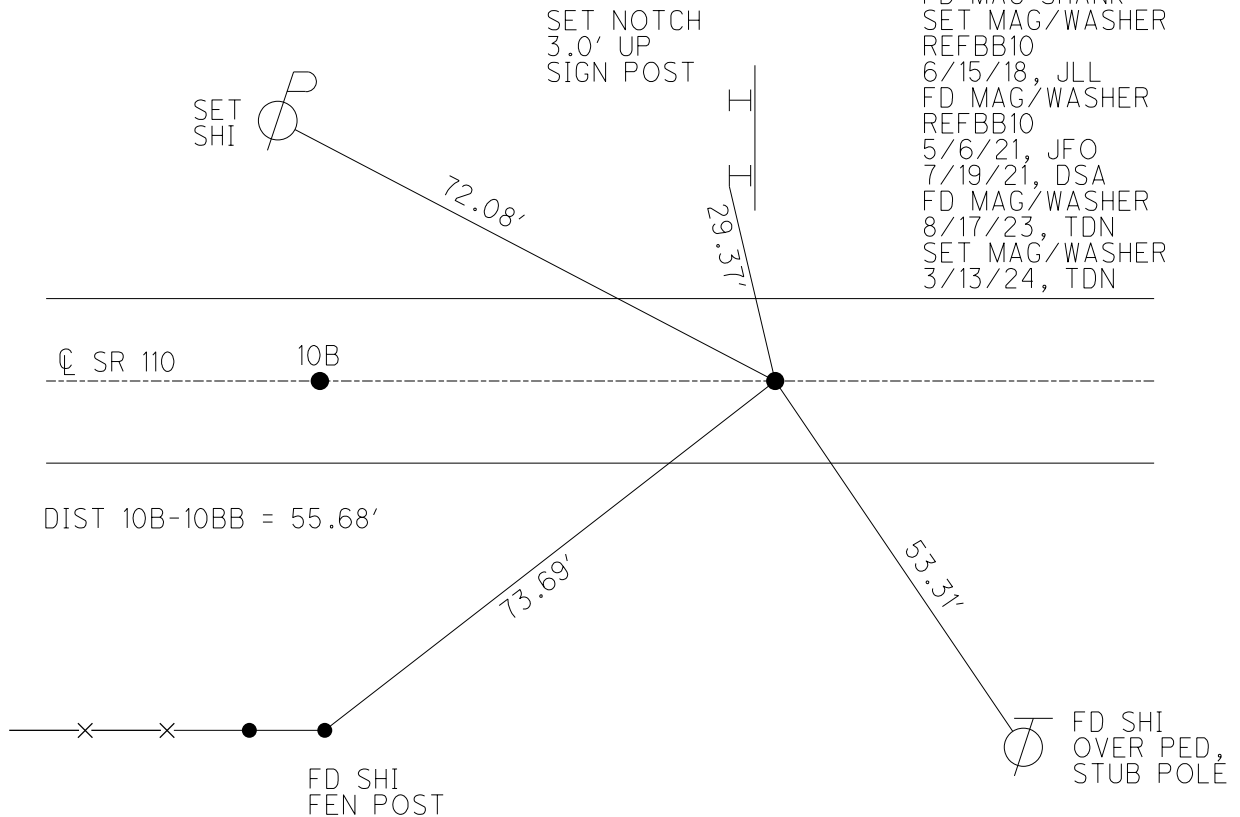
PERSONNEL _____ REFERENCE NO. 10 BB SHEET 42 OF 51
 NOTES MILLER DATE 3/13/24 ROUTE SR 110
 H.C. NIESE WEATHER SUNNY COUNTY HENRY
 R.C. RHOADES TEMP. 35° TOWNSHIP HARRISON
 SECTION 10
 DWG BY RHOADES PID 94321 T 5 N R 7 E

TYPE MONUMENT MAG/WASHER
 ON SURFACE - ~~BELOW~~ ON
 OFFSET \varnothing PAVEMENT ON LT : RT
11.4' TO LT EDGE PAVEMENT
 STATION: 233+37.62



HORZ. DATUM: NAD83(2011) GEOID: NAVD88 2012A
 GRID: NORTHING: 637871.118 EASTING: 1542456.042

RECORD:
 RD P.K. NAIL
 4/28/03, MC
 SET MAG/WASHER
 6/19/03, MB
 FD MAG SHANK
 SET MAG/WASHER
 REFBB10
 6/15/18, JLL
 FD MAG/WASHER
 REFBB10
 5/6/21, JFO
 7/19/21, DSA
 FD MAG/WASHER
 8/17/23, TDN
 SET MAG/WASHER
 3/13/24, TDN



O.D.O.T. DISTRICT 2 SURVEY OFFICE (USE ONLY)

PERSONNEL

REFERENCE NO. 10 BB

SHEET 35 OF 44

NOTES ASTON

DATE 8/17/23

ROUTE SR 110

H.C. NIESE

WEATHER WINDY

COUNTY HENRY

R.C. RHOADES

TEMP. 72°

TOWNSHIP HARRISON

AUBLE

SECTION 10

DWG BY RHOADES

PID 94321

T 5 N R 7 E

TYPE MONUMENT MAG/WASHER

ON SURFACE - ~~BELOW~~ ON

OFFSET 11.4' TO LT PAVEMENT ON LT : RT

11.4' TO LT EDGE PAVEMENT

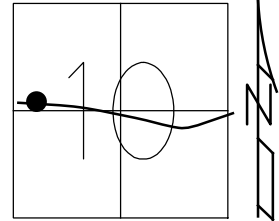
STATION: 233+37.62

HORIZ.DATUM: NAD83(2011)

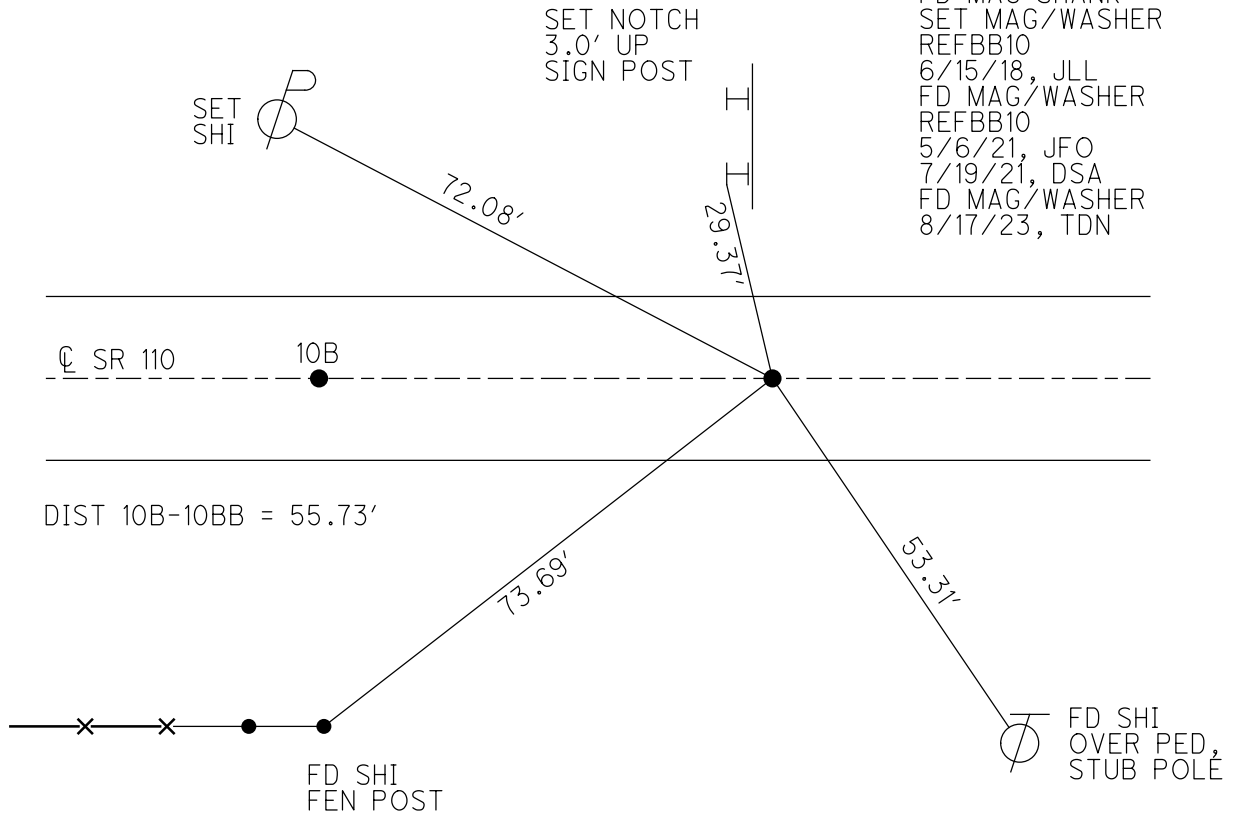
GEOID: NAVD88 2012A

GRID: NORTHING: 637871.118

EASTING: 1542456.042



RECORD:
 RD P.K.NAIL
 4/28/03, MC
 SET MAG/WASHER
 6/19/03, MB
 FD MAG SHANK
 SET MAG/WASHER
 REFBB10
 6/15/18, JLL
 FD MAG/WASHER
 REFBB10
 5/6/21, JFO
 7/19/21, DSA
 FD MAG/WASHER
 8/17/23, TDN



O.D.O.T. DISTRICT 2 SURVEY OFFICE (USE ONLY)

PERSONNEL _____

REFERENCE NO. 10 BB

SHEET 33 OF 43

NOTES CANTERBURY

DATE 4/28/03

ROUTE SR 110

H.C. BROWN

WEATHER SUNNY

COUNTY HENRY

R.C. BEAMOUNT

TEMP. 55°

TOWNSHIP HARRISON

SECTION 10

DWG BY NIESE

PID 104940

T 5 N R 7 E

TYPE MONUMENT P.K. NAIL

ON SURFACE - ~~BELOW~~ ON

OFFSET ☐ PAVEMENT ON LT : RT

11.4' TO LT EDGE PAVEMENT

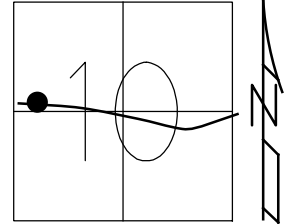
STATION: 233+27.02

HORIZ.DATUM: NAD83(2011)

GEOID: NAVD88 2012A

GRID: NORTHING: 637871.188

EASTING: 1542456.030



R/W FENCE



NEAR EDGE
3.0' UP

69.89'

29.37'

☐ SR 110

10B

DIST 10B-10BB = 55.71'

73.64'

53.34'

R/W FENCE

FD SHI
WOODEN END
POST



FD SHI
OVER PED,
STUB POLE

RECORD:
RD P.K.NAIL
4/28/03, MC
RESET MAG/WASHER
6/19/03, MB
FD MAG NAIL SHANK
REPLACED WITH
MAG/WASHER
REFBB10
6/15/18, JLL
FD MAG/WASHER
7/19/21, DSA

O.D.O.T. DISTRICT 2 SURVEY OFFICE (USE ONLY)

PERSONNEL

REFERENCE NO. 10 BB

SHEET 33 OF 43

NOTES CANTERBURY DATE 4-28-03
 H.C. BROWN WEATHER SUNNY
 R.C. BEAMOUNT TEMP. 55°

ROUTE SR 110
 COUNTY HENRY
 TOWNSHIP HARRISON
 SECTION 10
 T 5 N R 7 E

DWG BY AUBLE PID 104940

TYPE MONUMENT PK NAIL

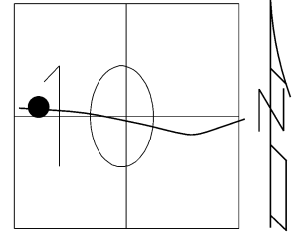
ON SURFACE - ~~BELOW~~ ON

OFFSET Q PAVEMENT 0.4' LT : ~~RT~~
11.4' TO LT EDGE PAVEMENT

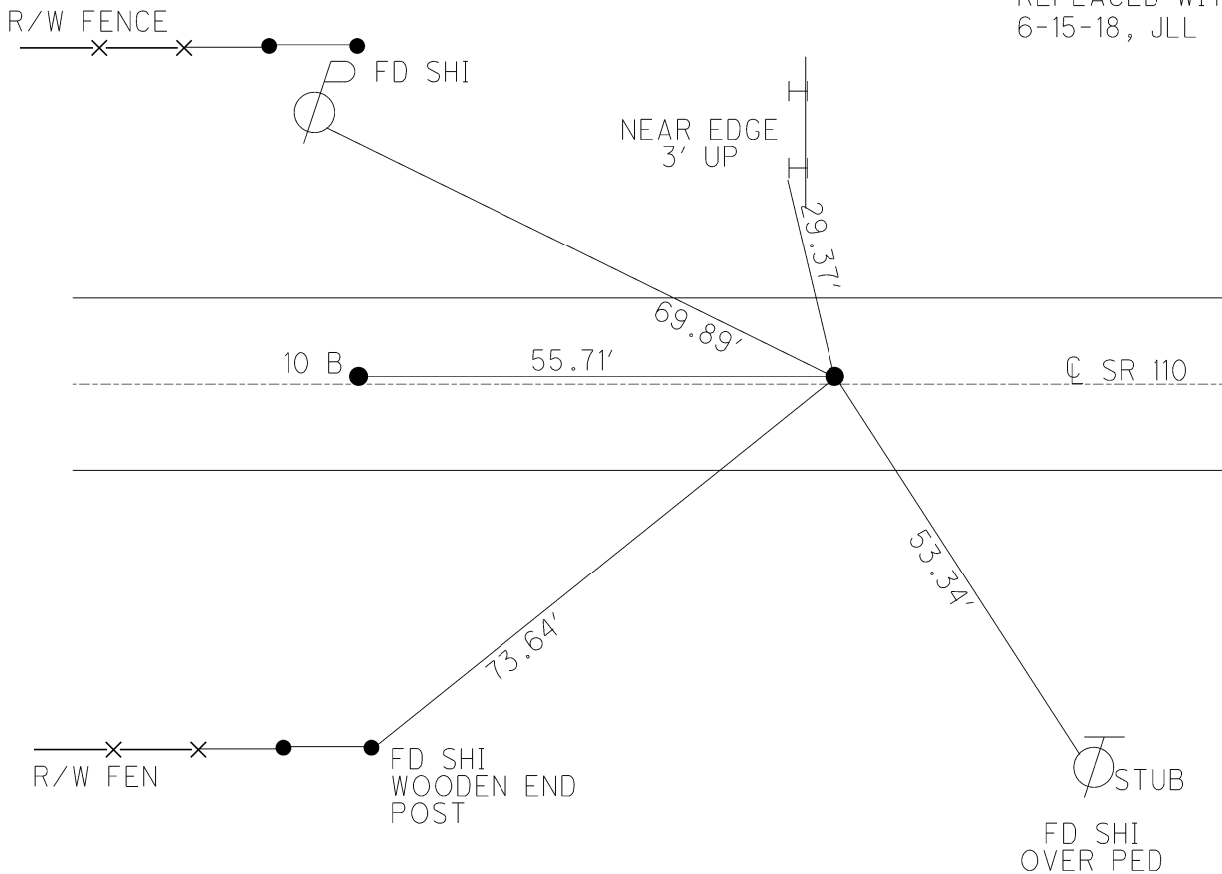
STATION: 232+68

HORZ.DATUM: NAD83(2011) GEOID: 2012A

GRID: NORTHING: 637871.188 EASTING: 1542456.030



RECORD:
 RD P.K.NAIL
 4-28-03, MC
 RESET MAG/WASHER
 6-19-03, MB
 FD MAG NAIL SHANK
 REPLACED WITH MAG/W
 6-15-18, JLL



O.D.O.T. DISTRICT 2 SURVEY OFFICE

PERSONNEL

REFERENCE NO. 10-B

SHEET 19 OF 26

NOTES CANTERBURY

DATE 4-28-03

ROUTE S.R. 110

H.C. BROWN

WEATHER SUNNY

COUNTY HENRY

R.C. BEAMOUNT

TEMP. +55°

TOWNSHIP HARRISON

SECTION 10

T 5 N R 7 E

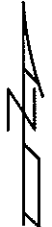
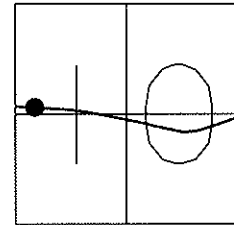
TYPE MONUMENT "A" - PK/WASHER "B" - PK NAIL

ON SURFACE - ~~BELOW~~ YES/BOTH PTS

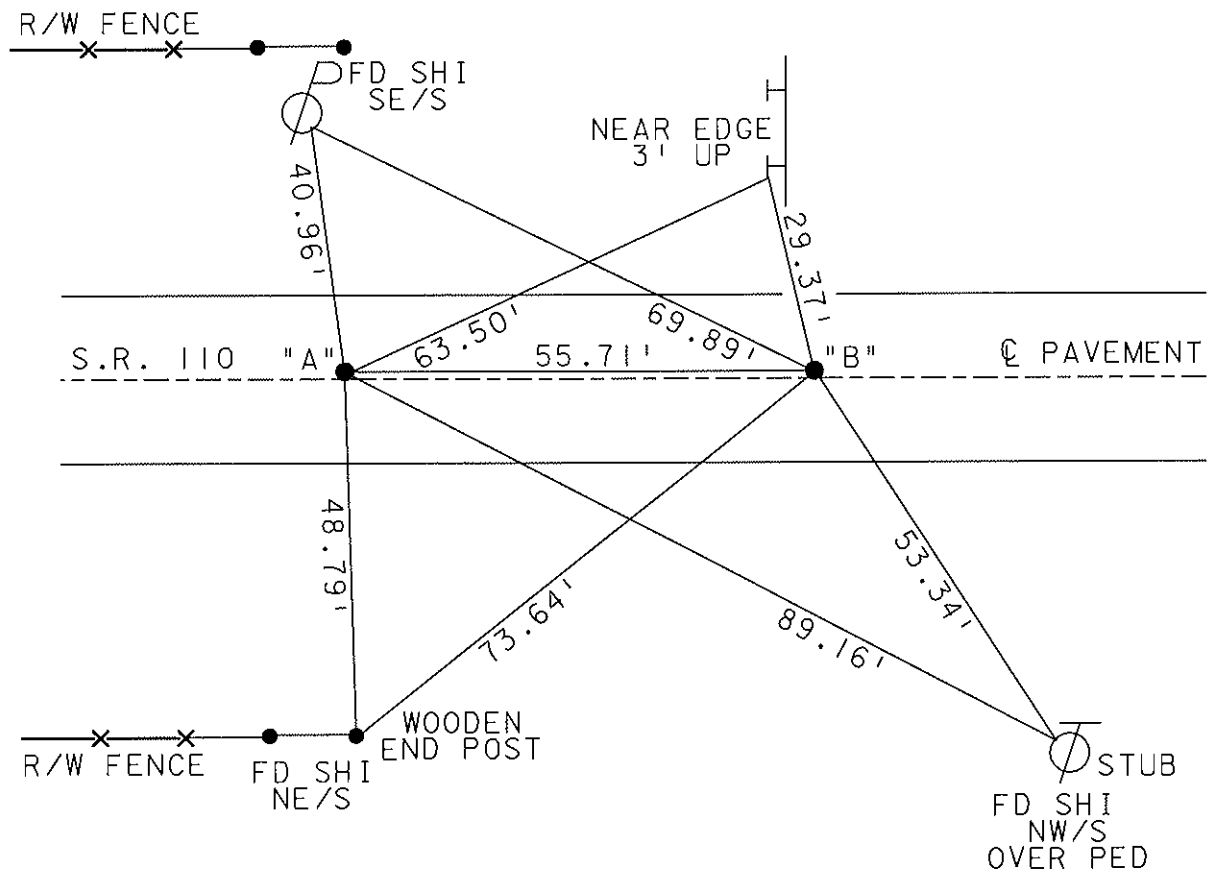
☉ PAV'T - RIGHT 0.4/BOTH PTS

BOTH 1.4' TO RT. EDGE PAVEMENT

S.L.M. 232+68 - "A"



RESET MAG NAILS & WASHERS
6-19-03
MB



O.D.O.T. DISTRICT 2 SURVEY OFFICE

PERSONNEL

REFERENCE NO. 10B

SHEET 27 OF 34

NOTES Loehrke

H.C. Curtis

R.C. Romero

DATE Sept 28

WEATHER Cloudy

TEMP. +55

ROUTE 110

COUNTY HENRY

TOWNSHIP HARRISON

SECTION 10

T 5 N R 7 E

Set P.K. 10-23-92

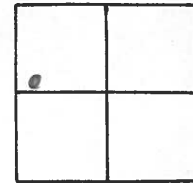
TYPE MONUMENT Small P.K.'s

ON SURFACE - BELOW Yes

LEFT - & PAV'T. - RIGHT 0.4

TO EDGE PAVEMENT

S.L.M. 232 + 68 - A



Between 55.72

