

O.D.O.T. DISTRICT 2 SURVEY OFFICE (USE ONLY)

PERSONNEL

REFERENCE NO. 10 CC

SHEET 44 OF 51

NOTES MILLER DATE 3/13/24
 H.C. NIESE WEATHER SUNNY
 R.C. RHOADES TEMP. 60°

ROUTE SR 110
 COUNTY HENRY
 TOWNSHIP HARRISON
 SECTION 10
 T 5 N R 7 E

DWG BY RHOADES PID 94321

TYPE MONUMENT MAG/WASHER

ON SURFACE - ~~BELOW~~ ON

OFFSET Q PAVEMENT 2.9' LT : ~~RT~~

9.5' TO LT EDGE PAVEMENT

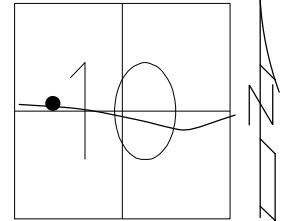
STATION: 235+78.15

HORZ. DATUM: NAD83(2011)

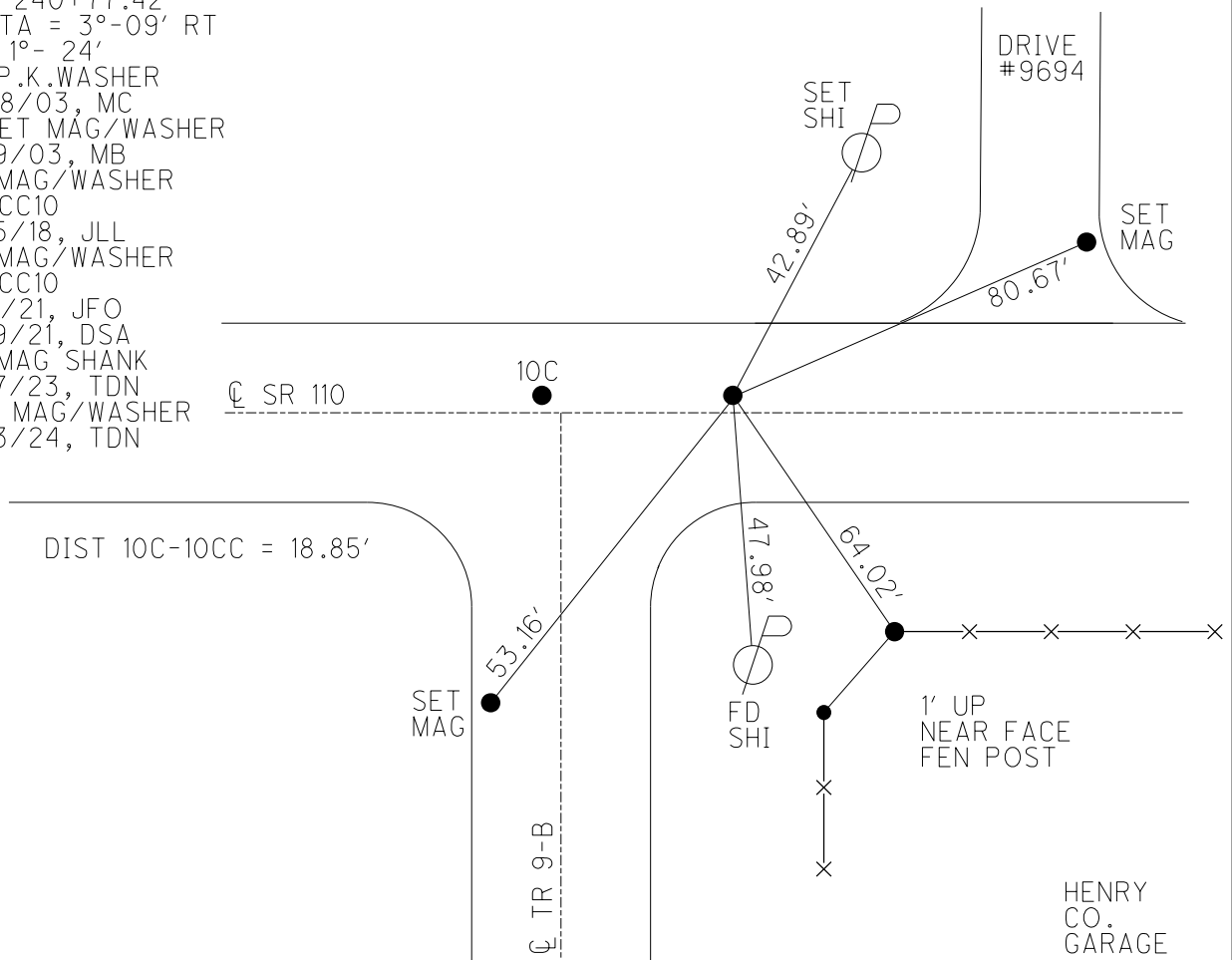
GEOID: NAVD88 2012A

GRID: NORTHING: 637848.987

EASTING: 1542695.564



RECORD:
 REC P.I.
 STA 240+77.42
 DELTA = 3°-09' RT
 D = 1°- 24'
 FD P.K. WASHER
 4/28/03, MC
 RESET MAG/WASHER
 6/19/03, MB
 FD MAG/WASHER
 REFCC10
 6/15/18, JLL
 FD MAG/WASHER
 REFCC10
 5/6/21, JFO
 7/19/21, DSA
 FD MAG SHANK
 8/17/23, TDN
 SET MAG/WASHER
 3/13/24, TDN



O.D.O.T. DISTRICT 2 SURVEY OFFICE (USE ONLY)

PERSONNEL

REFERENCE NO. 10 CC

SHEET 37 OF 44

NOTES ASTON
 H.C. NIESE
 R.C. RHOADES
AUBLE

DATE 8/17/23
 WEATHER WINDY
 TEMP. 72°

ROUTE SR 110
 COUNTY HENRY
 TOWNSHIP HARRISON
 SECTION 10

DWG BY RHOADES PID 94321

T 5 N R 7 E

TYPE MONUMENT MAG SHANK

ON SURFACE - ~~BELOW~~ ON

OFFSET 2.0' LT : ~~RT~~
9.2' TO LT EDGE PAVEMENT

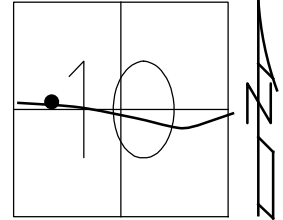
STATION: 235+78.15

HORIZ.DATUM: NAD83(2011)

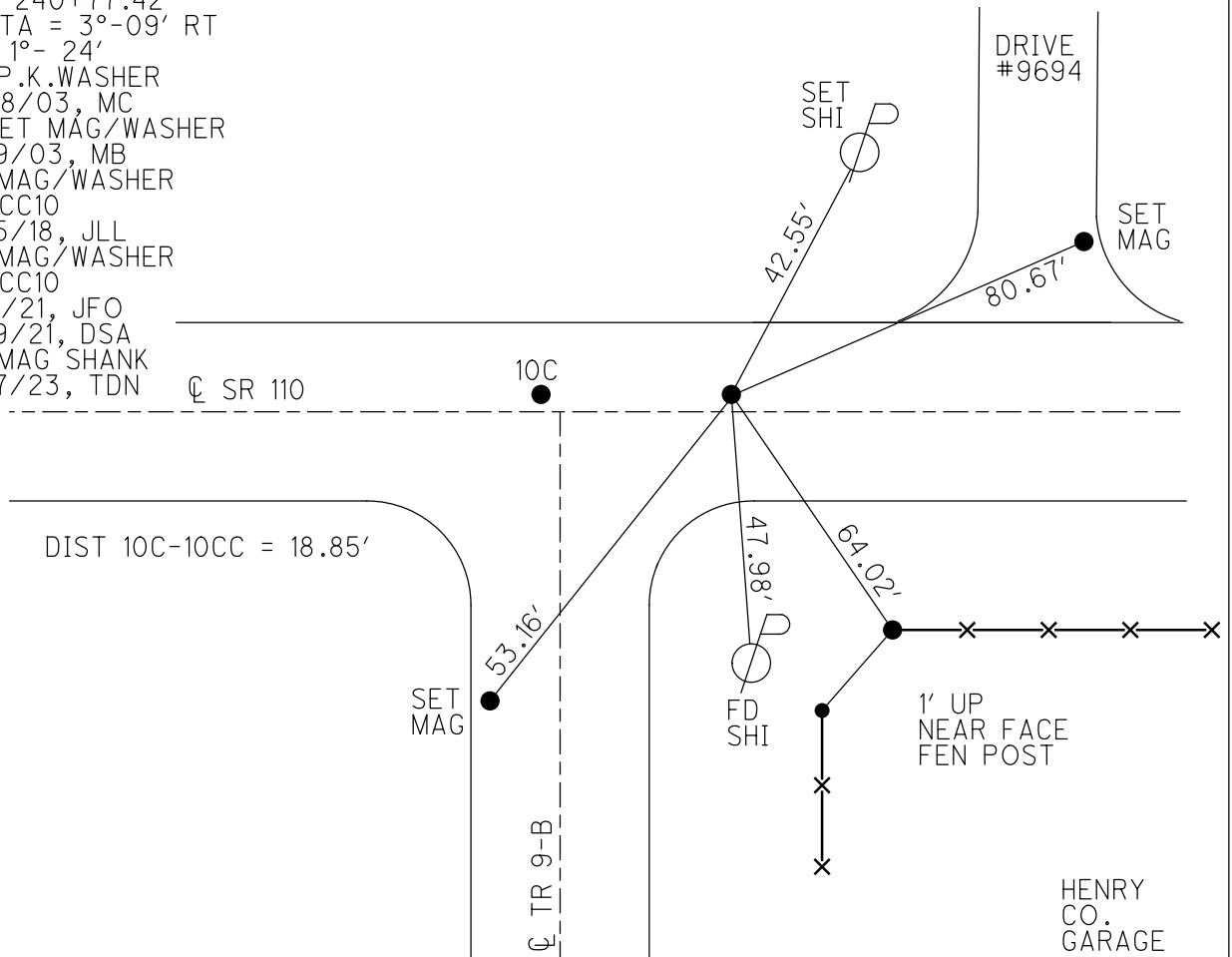
GEOID: NAVD88 2012A

GRID: NORTHING: 637848.987

EASTING: 1542695.564



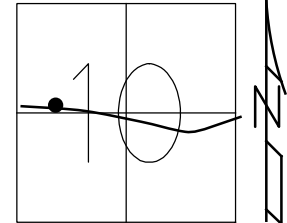
RECORD:
 REC P.I.
 STA 240+77.42
 DELTA = 3°-09' RT
 D = 1°- 24'
 FD P.K.WASHER
 4/28/03, MC
 RESET MAG/WASHER
 6/19/03, MB
 FD MAG/WASHER
 REFCC10
 6/15/18, JLL
 FD MAG/WASHER
 REFCC10
 5/6/21, JFO
 7/19/21, DSA
 FD MAG SHANK
 8/17/23, TDN



O.D.O.T. DISTRICT 2 SURVEY OFFICE (USE ONLY)

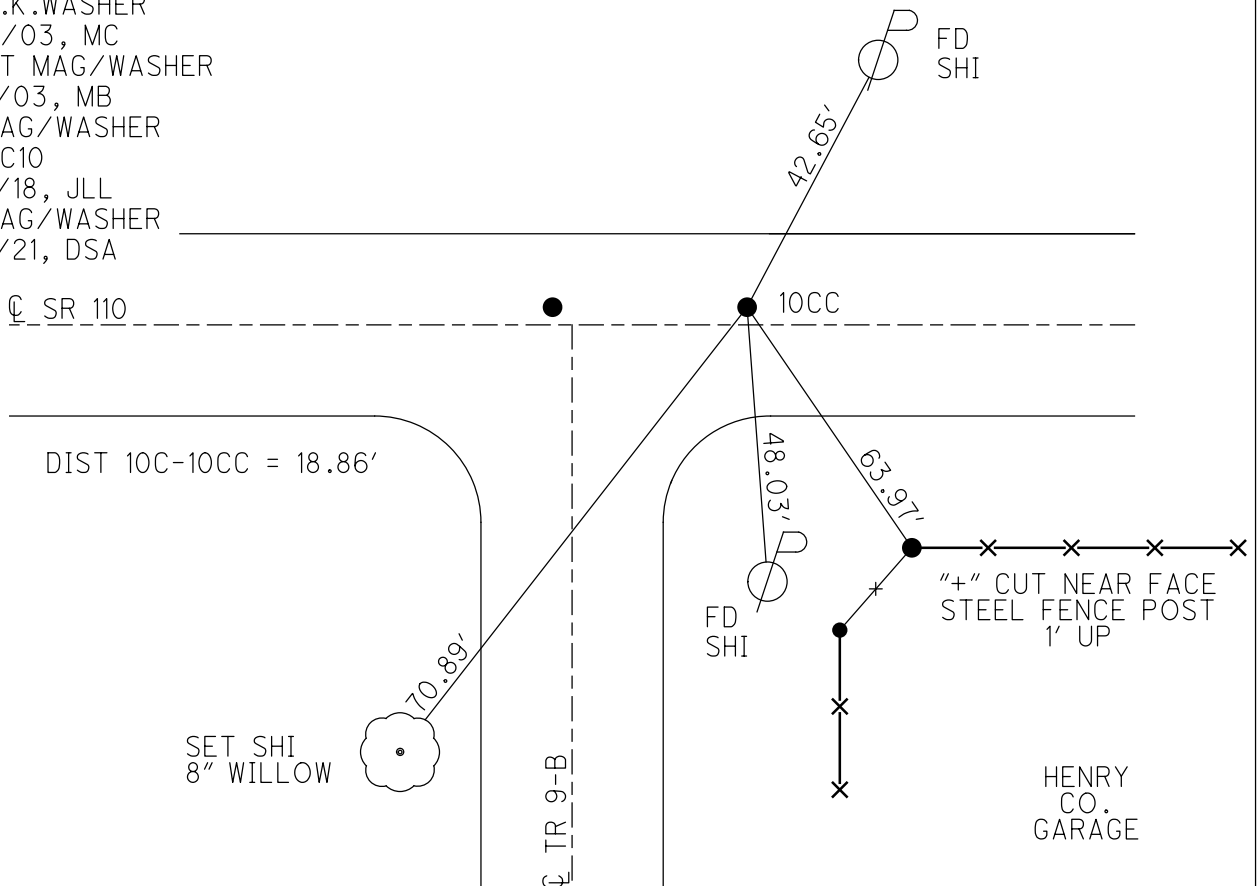
PERSONNEL _____ REFERENCE NO. 10 CC SHEET 35 OF 43
 NOTES CANTERBURY DATE 4/28/03 ROUTE SR 110
 H.C. BROWN WEATHER CLEAR COUNTY HENRY
 R.C. BEAMOUNT TEMP. 55° TOWNSHIP HARRISON
 DWG BY NIESE PID 104940 SECTION 10
 T 5 N R 7 E

TYPE MONUMENT P.K./WASHER
 ON SURFACE - ~~BELOW~~ ON
 OFFSET \odot PAVEMENT 2.0' LT : ~~RT~~
9.2' TO LT EDGE PAVEMENT
 STATION: 235+67



HORZ.DATUM: NAD83(2011) GEOID: NAVD88 2012A
 GRID: NORTHING: 637849.035 EASTING: 1542695.574

RECORD:
 REC P.I.
 STA 240+77.42
 DELTA = 3°-09' RT
 D = 1°- 24'
 FD P.K.WASHER
 4/28/03, MC
 RESET MAG/WASHER
 6/19/03, MB
 FD MAG/WASHER
 REFCC10
 6/15/18, JLL
 FD MAG/WASHER
 7/19/21, DSA



O.D.O.T. DISTRICT 2 SURVEY OFFICE

PERSONNEL

REFERENCE NO. 10-2

SHEET 20 OF 26

NOTES CANTERBURY

DATE 4-28-03

ROUTE S.R. 110

H.C. BROWN

WEATHER CLEAR

COUNTY HENRY

R.C. BEAMOUNT

TEMP. +55°

TOWNSHIP HARRISON

SECTION 10

T 5 N R 7 E

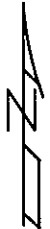
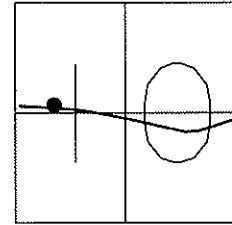
TYPE MONUMENT PK/WASHER--BOTH

ON SURFACE - ~~BELOW~~ YES

LEFT - ☉ PAV'T 2.0'--BOTH

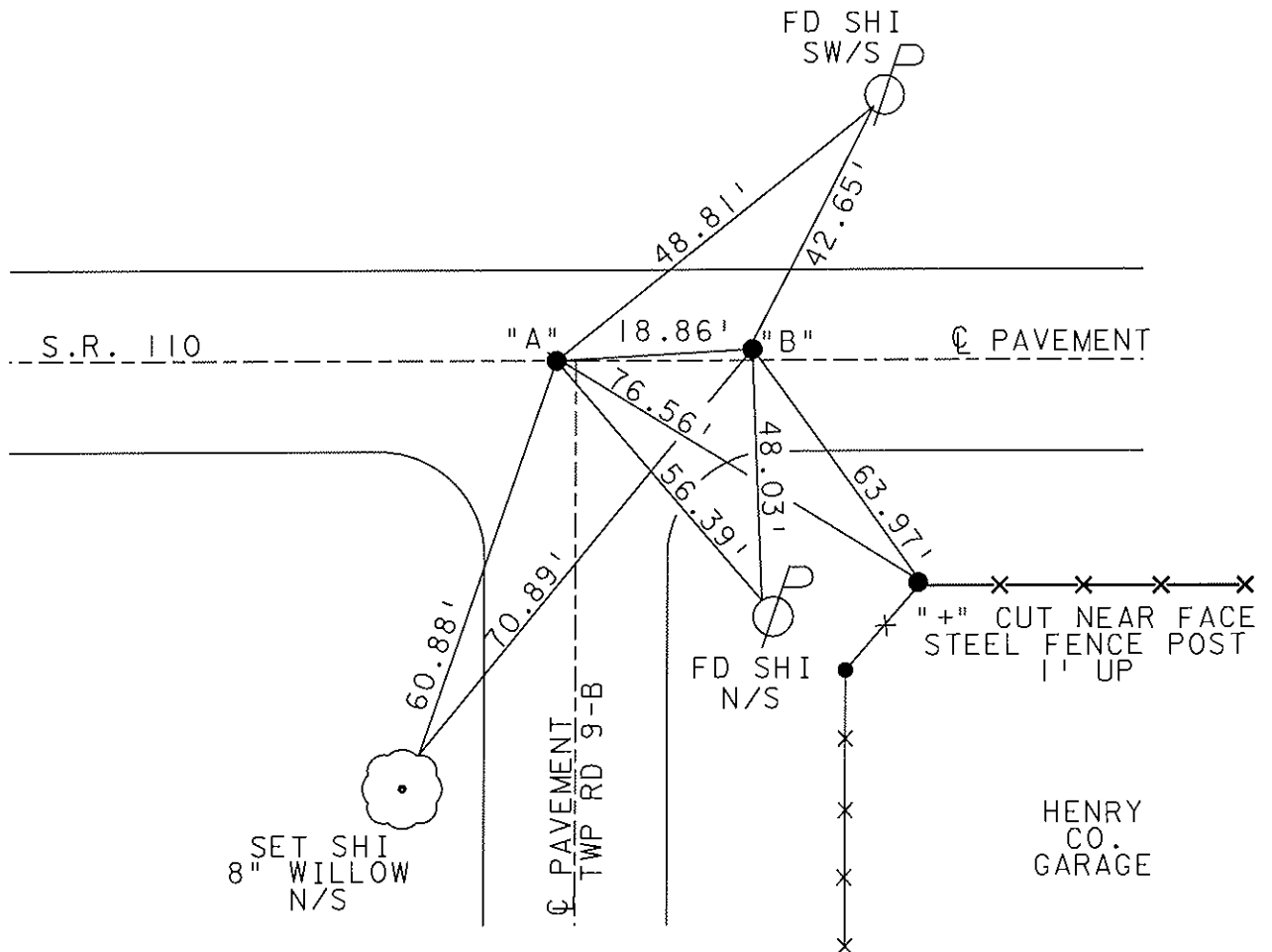
BOTH 9.2' TO LT. EDGE PAVEMENT

S.L.M. 235+46 / PT "A"



"A" REC P.I.
 STA 240+77.42
 DELTA = 3°-09' RT
 D = 1°-24'

RESET MAG NAILS & WASHERS
 6-19-03
 MB



O.D.O.T. DISTRICT 2 SURVEY OFFICE

PERSONNEL

REFERENCE NO. 10C

SHEET 28 OF 34

NOTES LOEHRKE

H.C. CURTIS

DATE 5-28-92

ROUTE S.R. 110

R.C. ROMETO

WEATHER CLEAR

COUNTY HENRY

TEMP. +72

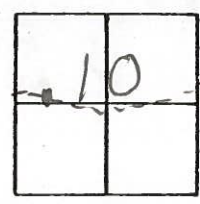
TOWNSHIP HARRISON

SECTION 10

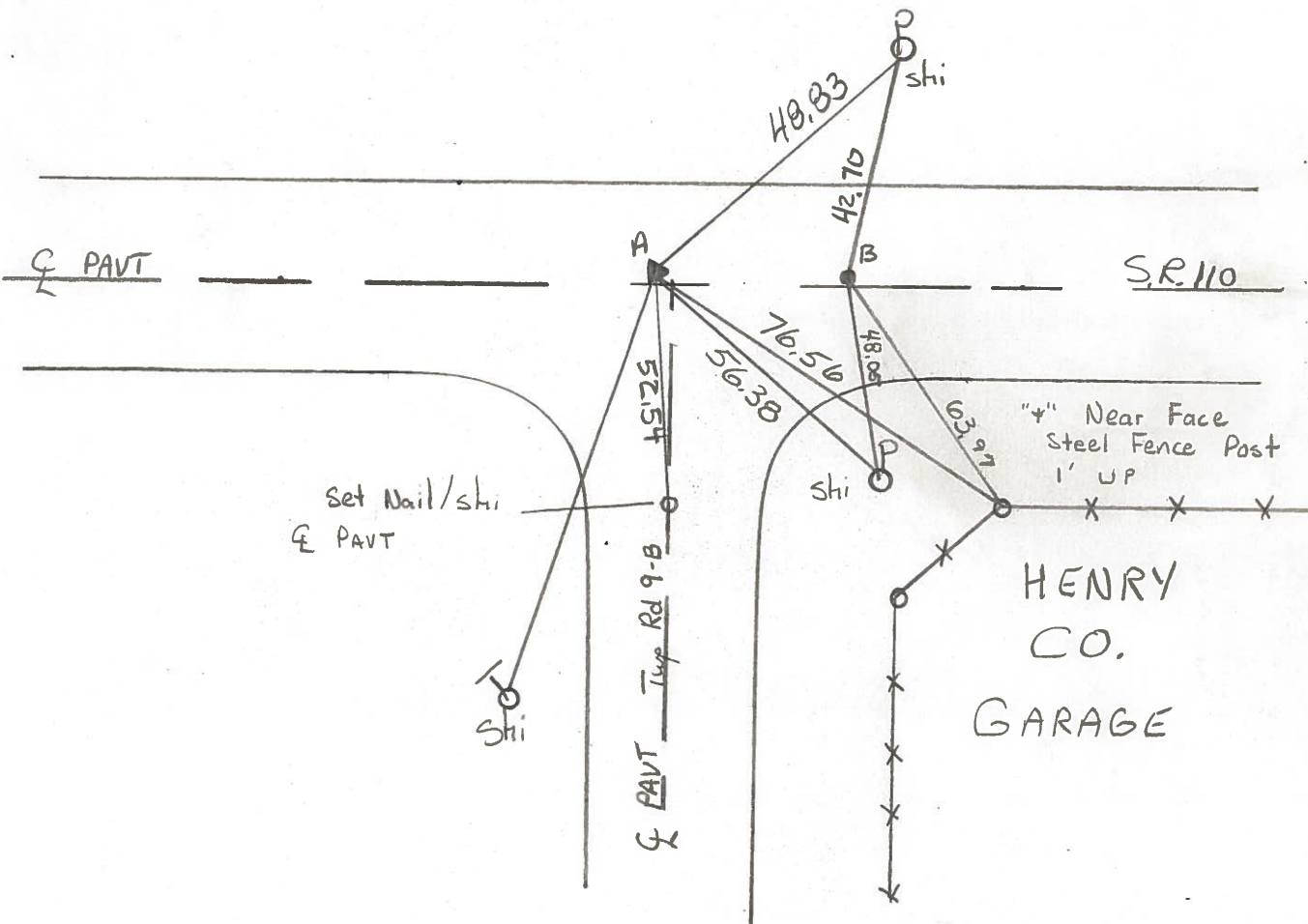
T5 NR 7 E

TYPE MONUMENT Sm. P.P. Spike / P.K. Nail
 ON SURFACE - BELOW Yes
 LEFT-℄ PAV'T. - RIGHT A-2.0' B
9.0 TO ℄ EDGE PAVEMENT
 S.L.M. 235 +46 Pt A

Reset P.K.
10-23-92



"A" REC. P.I. Between - 18.87
 Sta 240+77.42
 $\Delta = 3^{\circ}-09' \text{ Rt}$
 $D = 1^{\circ}-24'$



County HENRY S.R. 110

Date 2-8-84

Township HARRISON

Weather CLEAR

Section 10

Temp. + 15°

T5N, R2E

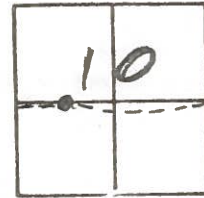
Personnel BARNHART HL

HOUSEHOLDER RC

HOPPMAN

LOEHRKE

10C



Fd. $\frac{3}{4}$ " PIPE @ SURFACE

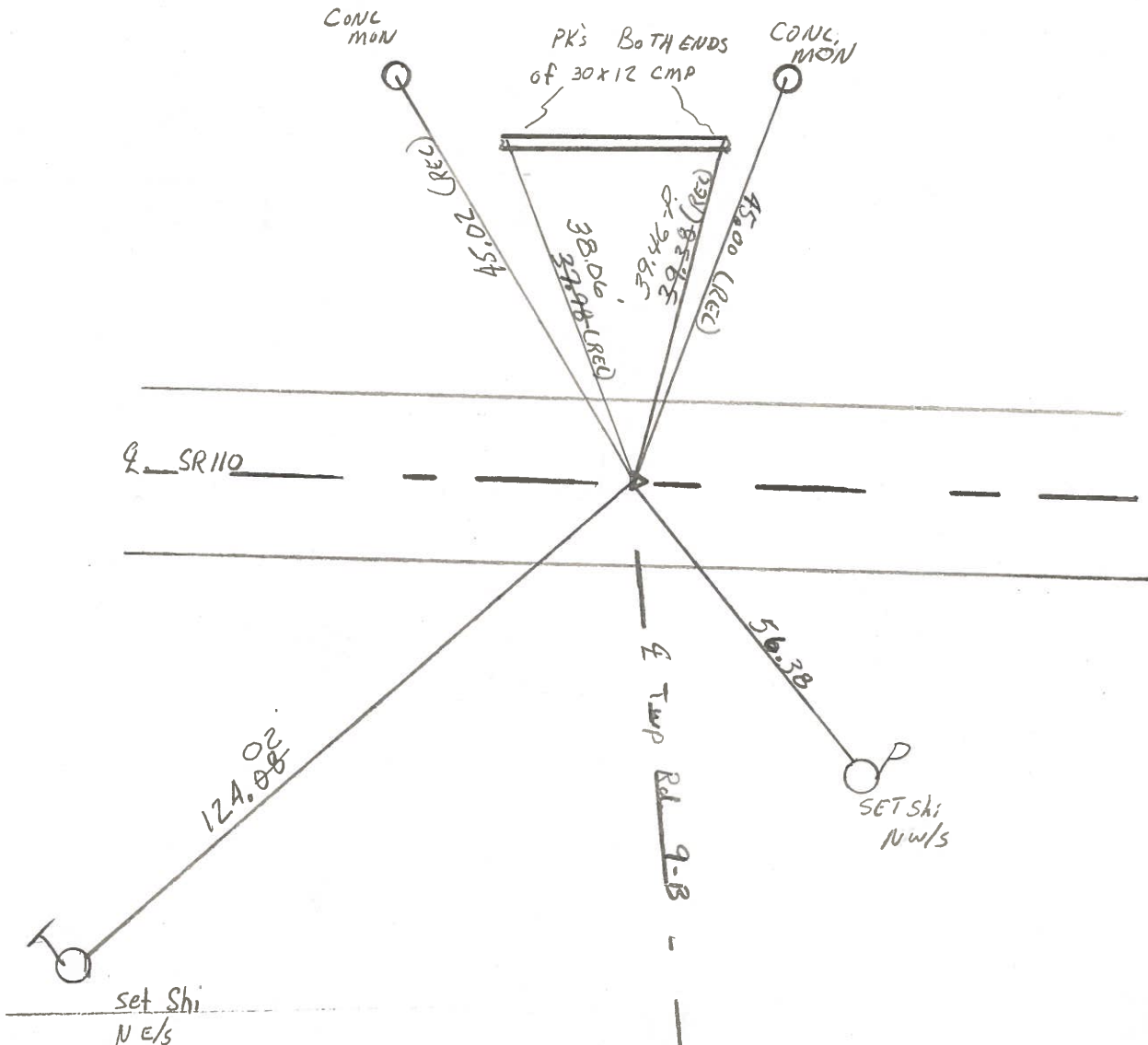
SLM = 235+57

1.8' LPOF Q
10.0 TO LEP

SET SMALL P.R. SPK.
6/6/84 SW.H.

P1 STA 240+77.42

$\Delta = 3^{\circ}09'$ RT.
 $\theta = 1^{\circ}24'$



PERSONNEL	TITLE	PERSONNEL	TITLE
Ernsthausen			
Donaldson			
Tefft			

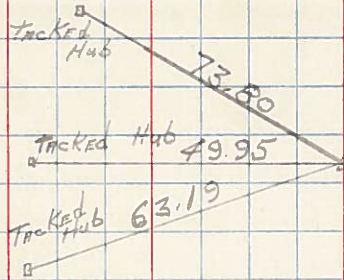
COUNTY Henry DATE 11-21-58

S. R. 110 WEATHER Part Cloud

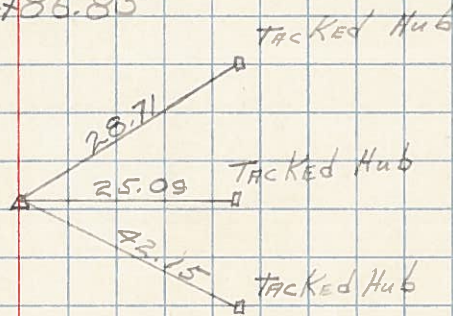
SEC. TEMP. +32°

DESCRIPTION Ties To P.I.'s LEFT CENTER LINE RIGHT JOB NO.

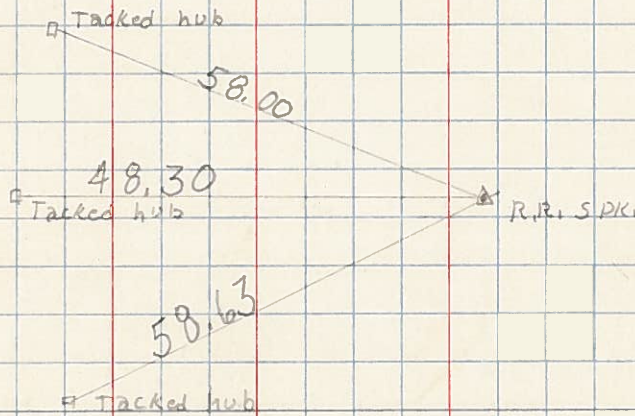
280+41.65



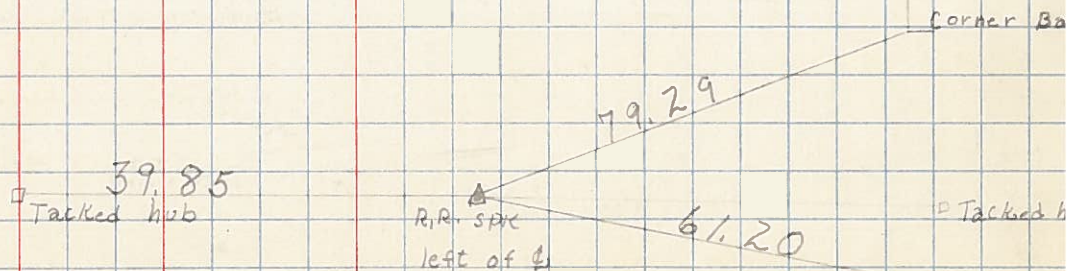
264+86.85



256+00.24

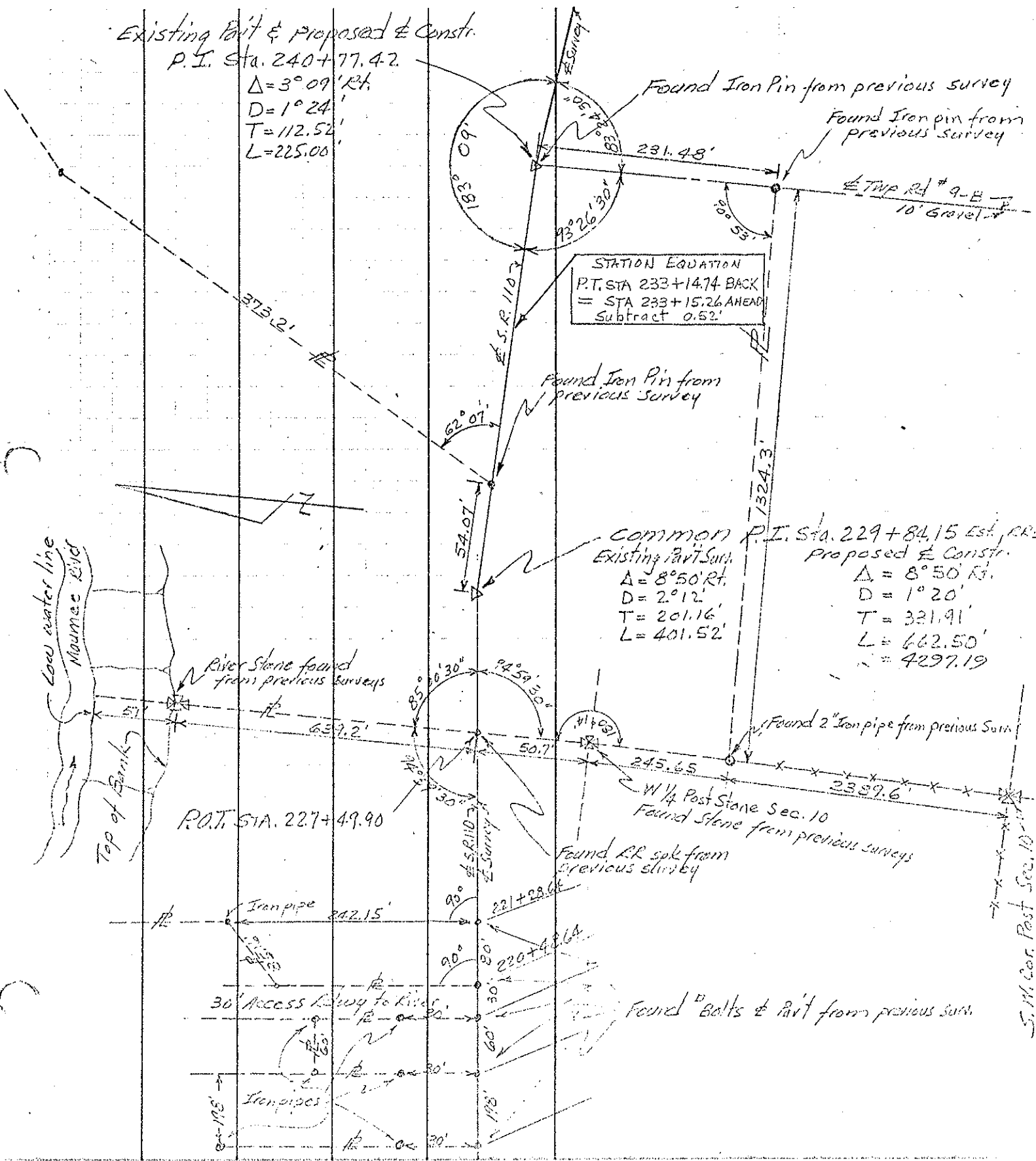


240+77.42



PERSONNEL	TITLE	PERSONNEL	TITLE
<u>Beach</u>		<u>Harris</u>	
<u>Armbruster</u>	<u>T</u>	<u>Hoff</u>	
<u>Knapp</u>		<u>Buchener</u>	
<u>Ruffler</u>		<u>Delvanthal</u>	

COUNTY Henry DATE Dec. 1957
 S. R. 110 WEATHER _____
 SEC. 2.22 TEMP. _____
 DESCRIPTION ALIGNMENT sheet # 5 JOB NO. _____



PERSONNEL	TITLE	PERSONNEL	TITLE	COUNTY	DATE
<u>Beach</u>		<u>Hoff</u>		<u>Henry</u>	<u>Dec. 1957</u>
<u>Armbruster</u>		<u>Harris</u>		S. R. <u>110</u>	WEATHER _____
<u>Ruffer</u>		<u>Rybenor</u>		SEC. <u>2.22</u>	TEMP. _____
<u>Knape</u>		<u>Delventral</u>		CONTROL POINTS <u>4</u>	JOB NO. _____

