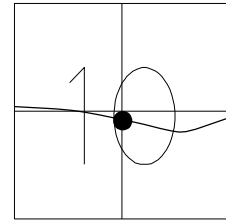


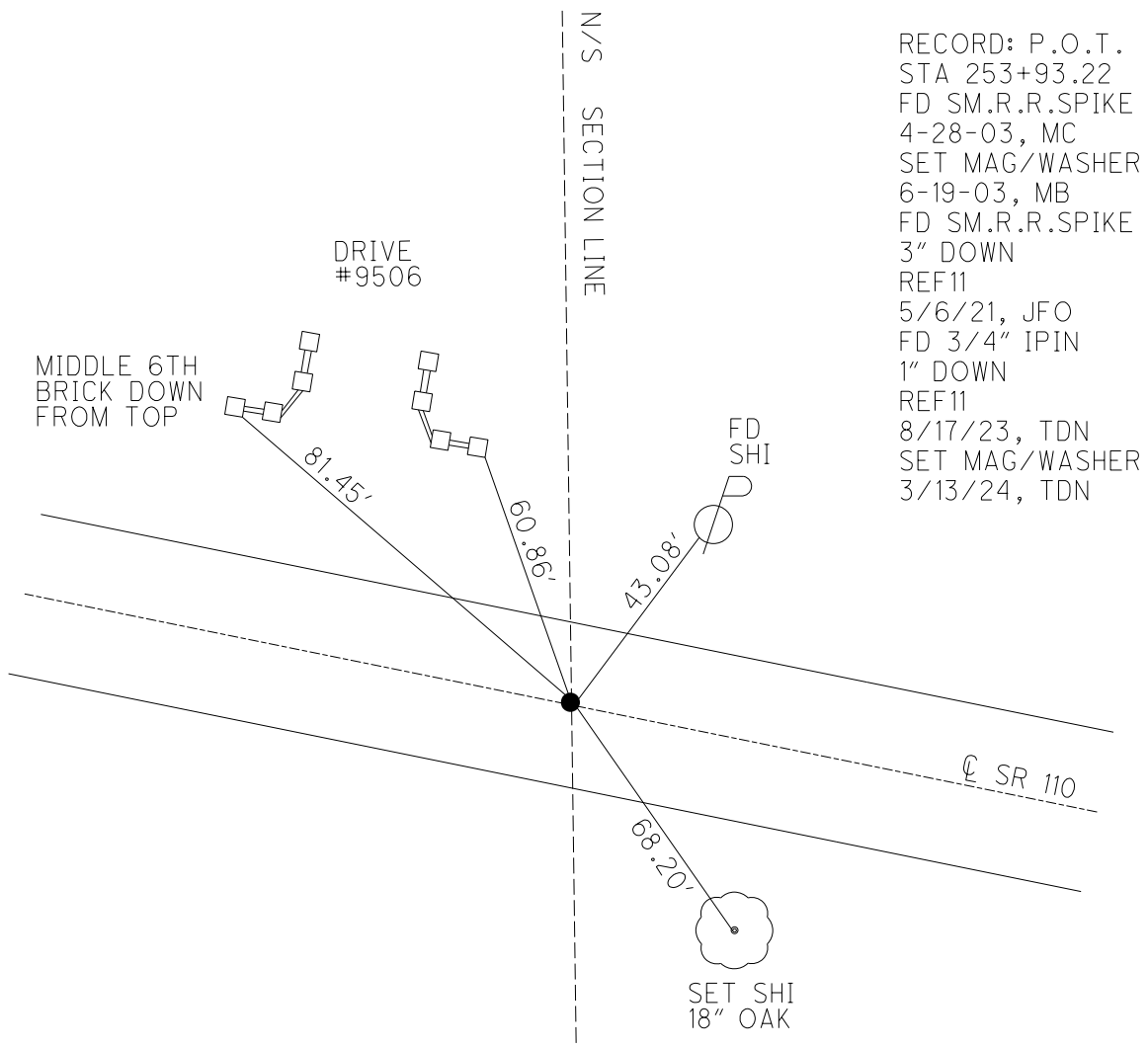
O.D.O.T. DISTRICT 2 SURVEY OFFICE (USE ONLY)

PERSONNEL \_\_\_\_\_ REFERENCE NO. 11 SHEET 46 OF 51  
 NOTES MILLER DATE 3/13/24 ROUTE SR 110  
 H.C. NIESE WEATHER SUNNY COUNTY HENRY  
 R.C. RHOADES TEMP. 55° TOWNSHIP HARRISON  
 \_\_\_\_\_ SECTION 10  
 DWG BY RHOADES PID 94321 T 5 N R 7 E

TYPE MONUMENT MAG/WASHER  
 ON SURFACE - ~~BELOW~~ ON  
 OFFSET 0.4' LT : ~~RT~~  
11.3' TO LT EDGE PAVEMENT  
 STATION: 248+74.67



HORIZ.DATUM: NAD83 2011 GEOID: NAVD88 2018  
 GRID: NORTHING: 637664.578 EASTING: 1543978.912



RECORD: P.O.T.  
 STA 253+93.22  
 FD SM.R.R.SPIKE  
 4-28-03, MC  
 SET MAG/WASHER  
 6-19-03, MB  
 FD SM.R.R.SPIKE  
 3" DOWN  
 REF11  
 5/6/21, JFO  
 FD 3/4" IPIN  
 1" DOWN  
 REF11  
 8/17/23, TDN  
 SET MAG/WASHER  
 3/13/24, TDN

O.D.O.T. DISTRICT 2 SURVEY OFFICE (USE ONLY)

PERSONNEL

REFERENCE NO. 11

SHEET 39 OF 44

NOTES ASTON

DATE 8/17/23

ROUTE SR 110

H.C. NIESE

WEATHER BREEZY

COUNTY HENRY

R.C. RHOADES

TEMP. 72°

TOWNSHIP HARRISON

AUBLE

DWG BY RHOADES

PID 94321

SECTION 10

T 5 N R 7 E

TYPE MONUMENT 3/4" IPIN

~~ON SURFACE~~ - BELOW 1"

OFFSET Q PAVEMENT 0.4' LT : RT

11.3' TO LT EDGE PAVEMENT

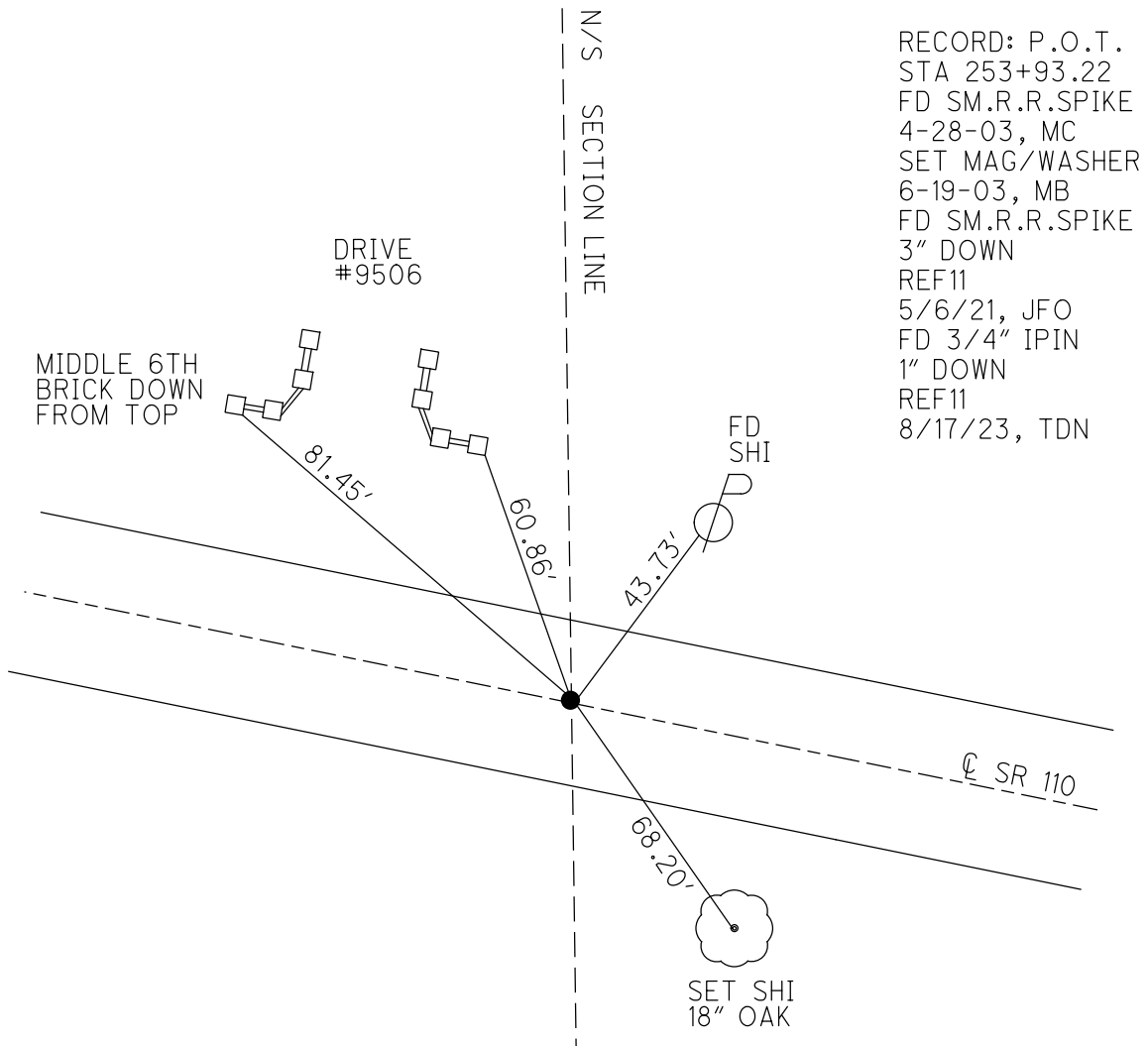
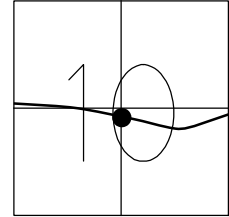
STATION: 248+74.67

HORZ. DATUM: NAD83 2011

GEOID: NAVD88 2018

GRID: NORTHING: 637664.578

EASTING: 1543978.912



RECORD: P.O.T.  
 STA 253+93.22  
 FD SM.R.R.SPIKE  
 4-28-03, MC  
 SET MAG/WASHER  
 6-19-03, MB  
 FD SM.R.R.SPIKE  
 3" DOWN  
 REF11  
 5/6/21, JFO  
 FD 3/4" IPIN  
 1" DOWN  
 REF11  
 8/17/23, TDN

O.D.O.T. DISTRICT 2 SURVEY OFFICE

PERSONNEL \_\_\_\_\_

REFERENCE NO. 11

SHEET 22 OF 26

NOTES CANTERBURY

DATE 4-28-03

ROUTE S.R. 110

H.C. BROWN

WEATHER CLOUDY

COUNTY HENRY

R.C. BEAMOUNT

TEMP. +60°

TOWNSHIP HARRISON

SECTION 10

T 5 N R 7 E

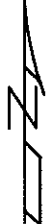
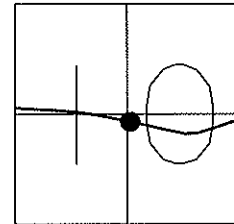
TYPE MONUMENT SM. R.R. SPIKE

ON SURFACE - ~~BELOW~~ YES

LEFT- Q PAV'T - RIGHT 0.4'

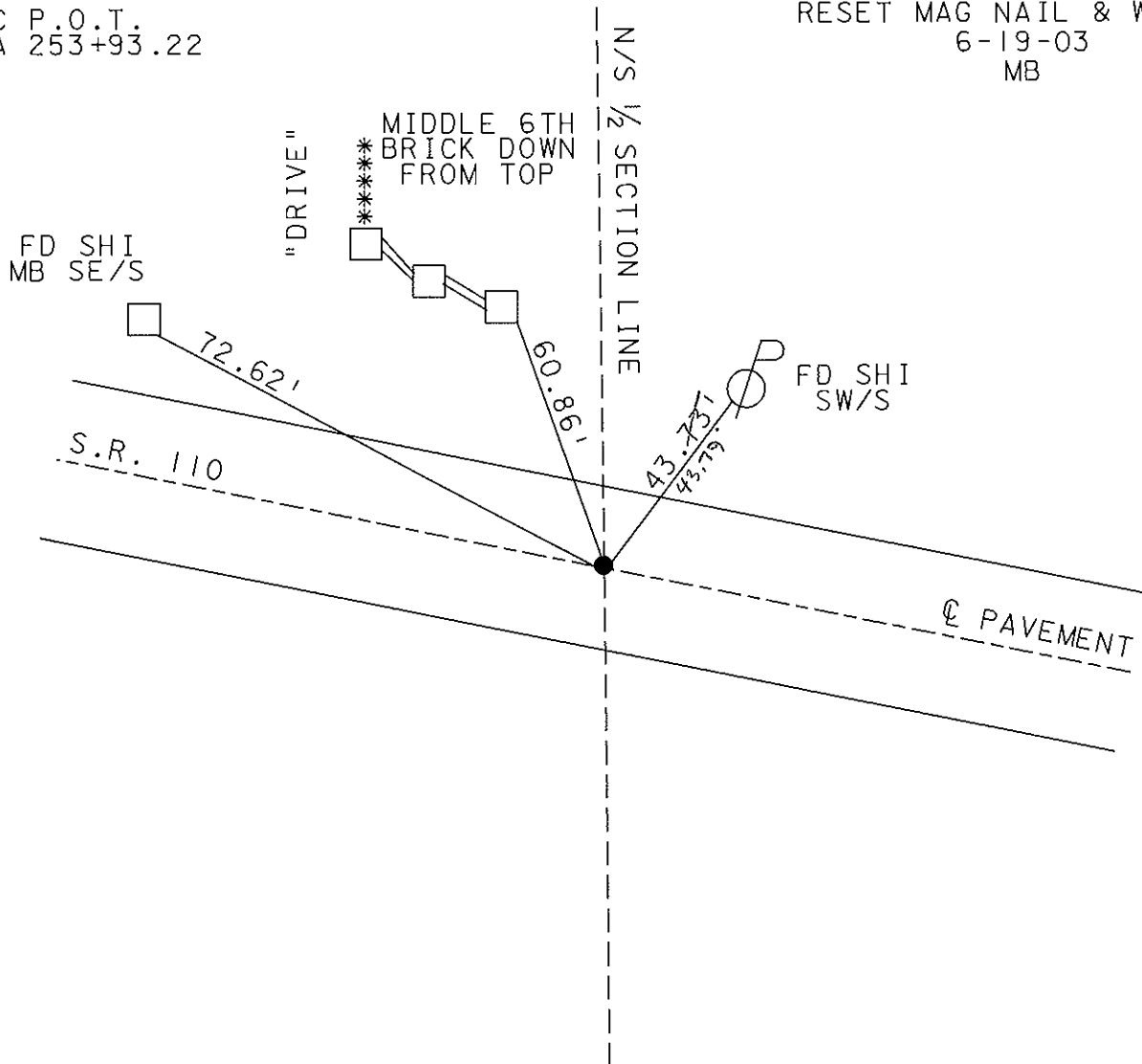
11.3' TO LT. EDGE PAVEMENT

S.L.M. 248+61



REC P.O.T.  
STA 253+93.22

RESET MAG NAIL & WASHER  
6-19-03  
MB



O.D.O.T. DISTRICT 2 SURVEY OFFICE

PERSONNEL \_\_\_\_\_

REFERENCE NO. 11

SHEET 30 OF 34

NOTES LOEHRKE

H.C. CURTIS

DATE 9-28-92

ROUTE S.R. 110

R.C. ROMETO

WEATHER Cloudy

COUNTY HENRY

TEMP. 65

TOWNSHIP HARRISON

SECTION 10

T 5 N R 7 E

Reset

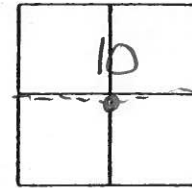
TYPE MONUMENT Sm. R.R. Spike 10-27-92

ON SURFACE - BELOW Yes

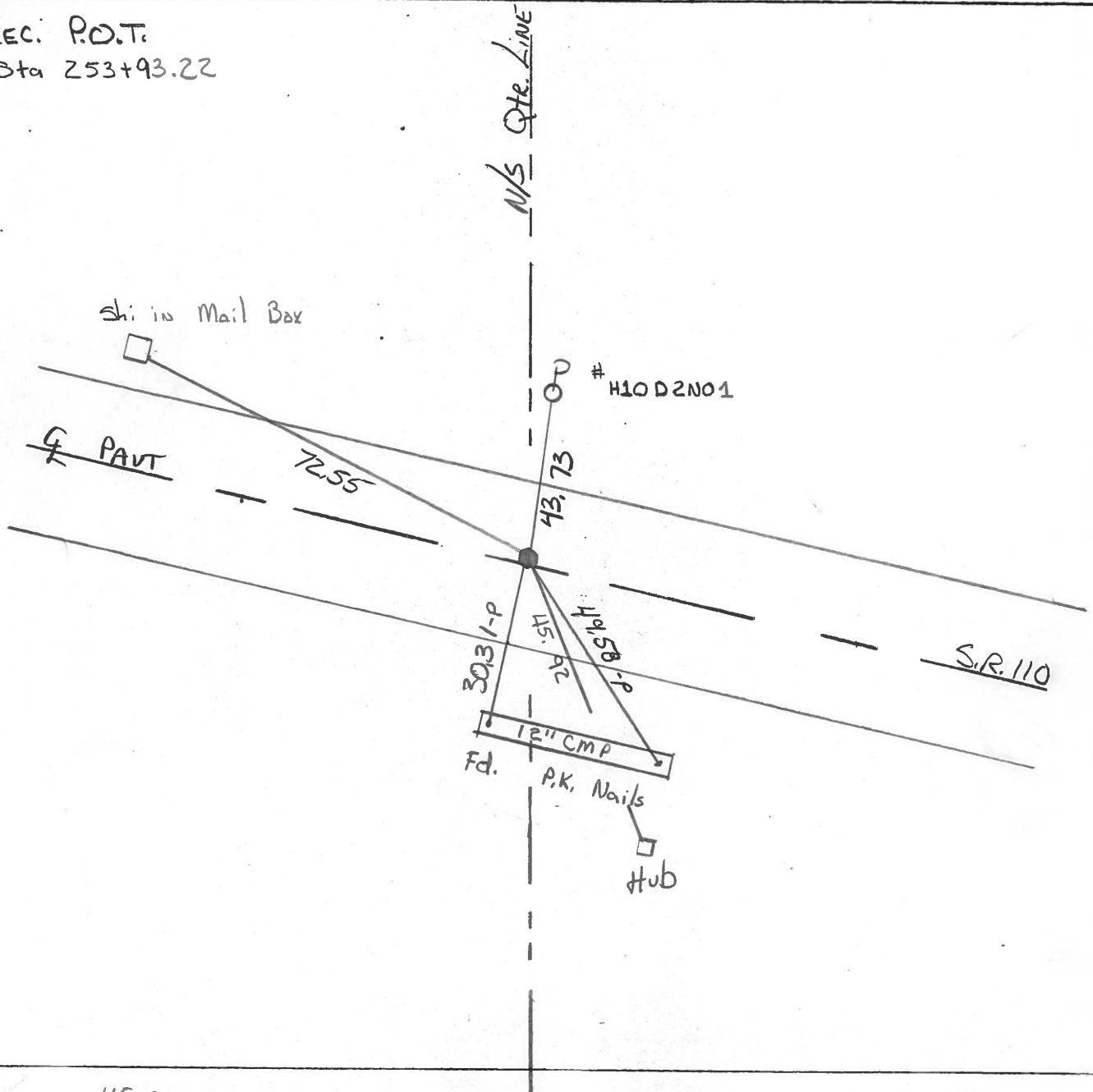
LEFT- & PAV'T. - RIGHT 0.4'

11.3 TO 4 EDGE PAVEMENT

S.L.M. 248 + 61



REC. P.O.T.  
Sta 253+93.22



County HENRY S.R. 110

Date 2-8-84

Township HARRISON

Weather CLEAR

Section 10

Temp. +18°

T5N, R7E

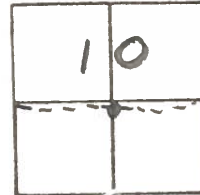
Personnel BARNHISEL HK

HOUSEHOLDER RC

HOFFMAN

LOEHRKE

#11



Fd 3/4" Pipe @ SURFACE

SLM = 248 + 73

0.5 LF of PAVT SR110

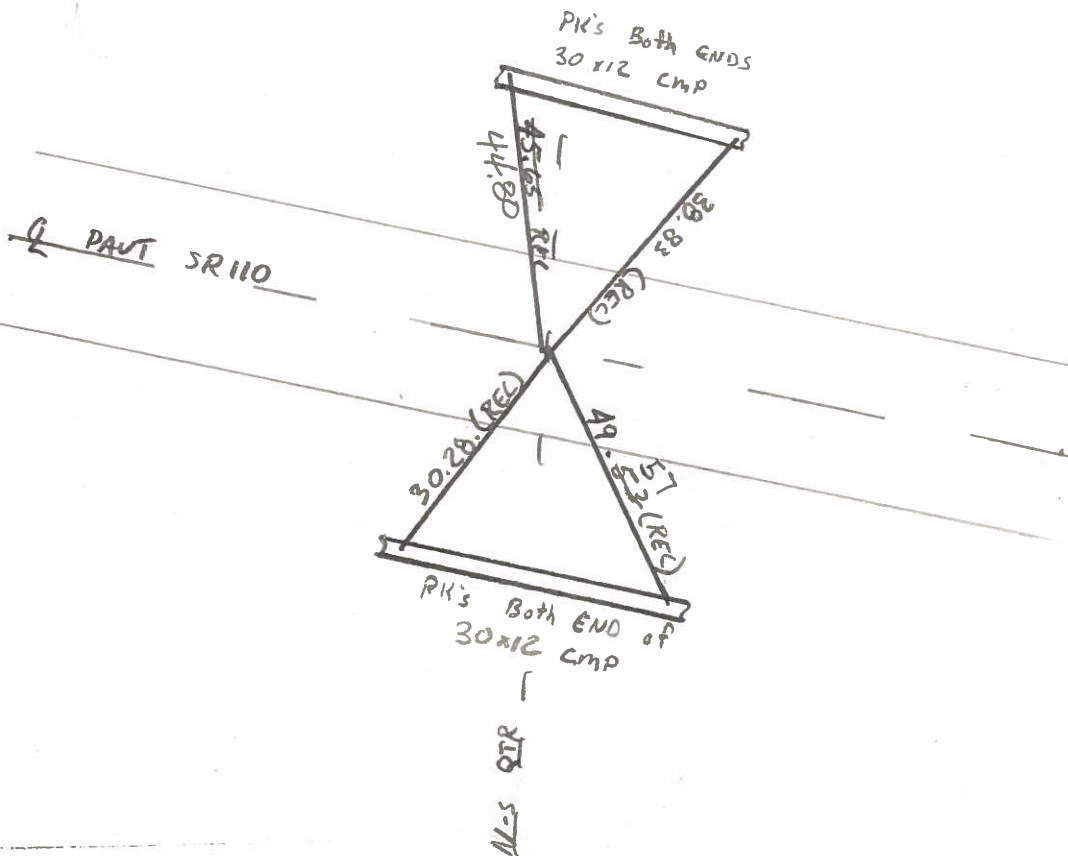
12.6 to REP

11.6 to LEP

POT STA 253 + 93.22

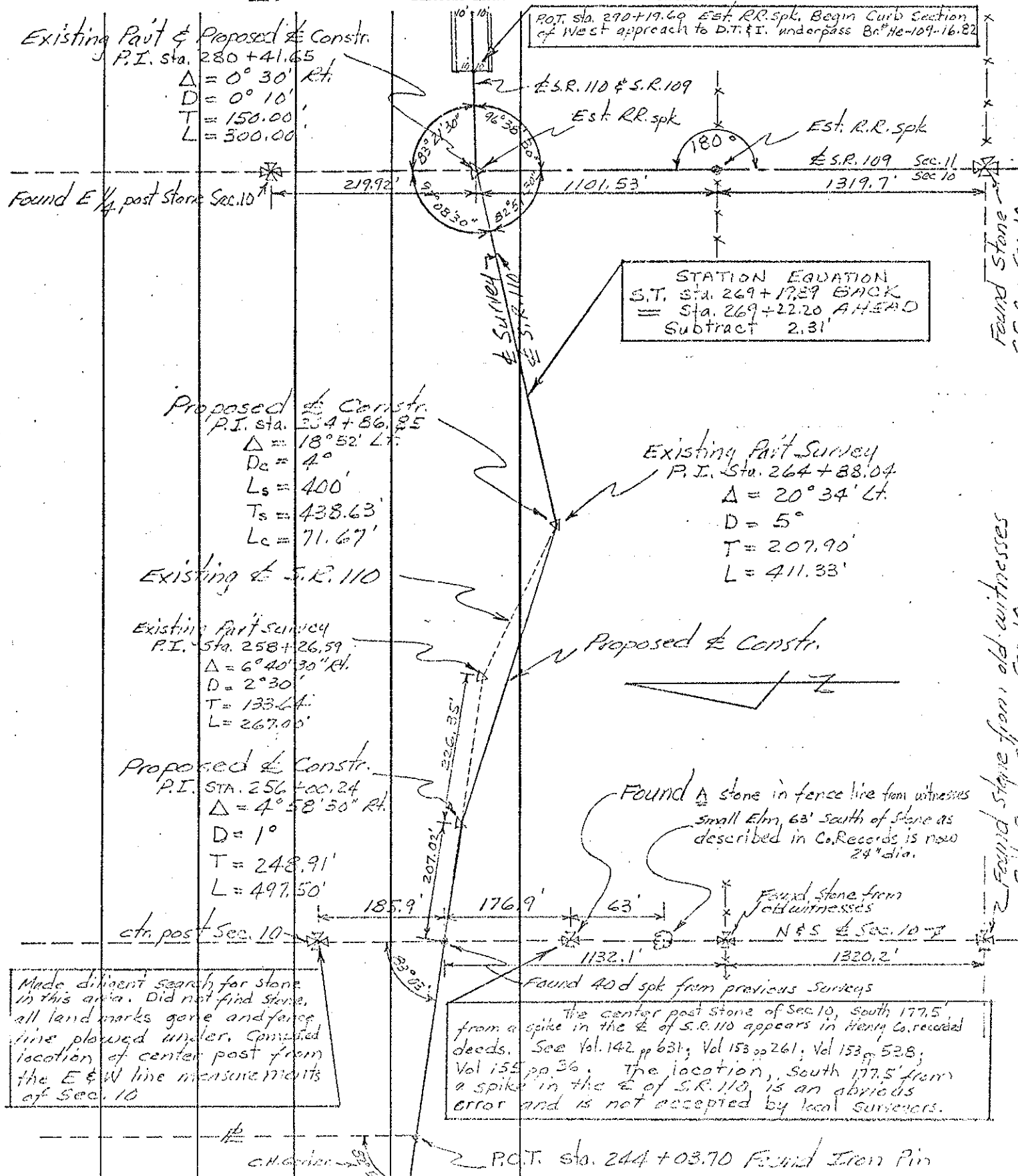
SET SMALL R.R. SPK.  
6/6/84  
S.W.H.

Sec. 10





PERSONNEL	TITLE	PERSONNEL	TITLE	COUNTY	DATE
Beach		Hoff		Henry	Dec. 1957
Armbruster	x	Harris		S. R.	110
Eutter		Ruchener		SEC.	2.22
Knappe		Delvanthal		TEMP.	
DESCRIPTION				Alignment sheet # 6	JOB NO.



Made diligent search for stone in this area. Did not find stone, all land marks gone and fence line plowed under. Computed location of center post from the E & W line measurements of Sec. 10

FOUND 40 d spike from previous surveys  
The center post stone of Sec. 10, south 177.5' from a spike in the E of S.R. 110 appears in Henry Co. recorded deeds. See Vol. 142 pp 631; Vol 153 pp 261; Vol 153 pp 528; Vol 155 pp. 36. The location, south 177.5' from a spike in the E of S.R. 110, is an obvious error and is not accepted by local surveyors.

Found stone from old witnesses S.E. Cor. Sec. 10

Found Stone - S.E. Cor. Sec. 10

C.H. Grier

P.C.T. Sta. 244+03.70 Found Iron Pin