

O.D.O.T. DISTRICT 2 SURVEY OFFICE (USE ONLY)

PERSONNEL

REFERENCE NO. 11 C

SHEET 42 OF 44

NOTES ASTON

DATE 8/17/23

ROUTE SR 110

H.C. NIESE

WEATHER WINDY

COUNTY HENRY

R.C. RHOADES

TEMP. 70°

TOWNSHIP HARRISON

AUBLE

SECTION 10

DWG BY RHOADES

PID 94321

T 5 N R 7 E

TYPE MONUMENT 1" IPIPE

~~ON SURFACE~~ - BELOW 3"

OFFSET  $\odot$  PAVEMENT 26.4' ~~±~~ : RT

13.3' RT TO RT EDGE PAVEMENT

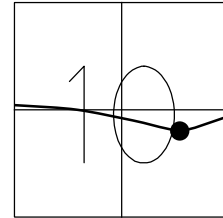
STATION: 259+65.03

HORIZ.DATUM: NAD83 2011

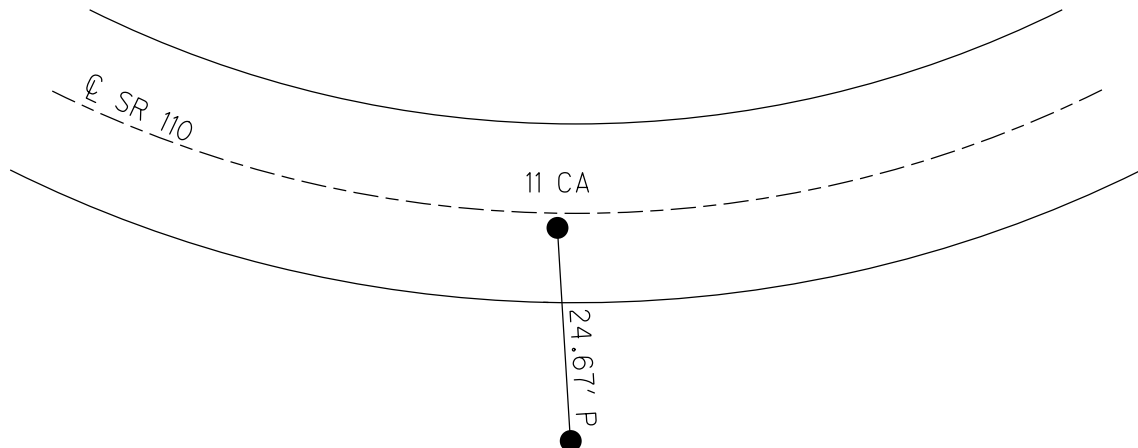
GEOID: NAVD88 2018

GRID: NORTHING: 637433.224

EASTING: 1545046.986



RECORD: P.I.  
STA. 264+86.85  
 $\Delta = 18^{\circ}52'$  LT  
D =  $4^{\circ}$   
LS = 400'  
TS = 438.63'  
E = 24.35  
FD 1" IPIPE  
3" DOWN  
4-28-03, MC  
FD 3/4" IPIPE  
REFC11  
5/6/21, JFO  
8/17/23, TDN



O.D.O.T. DISTRICT 2 SURVEY OFFICE

PERSONNEL \_\_\_\_\_

REFERENCE NO. 11-C

SHEET 25 OF 26

NOTES CANTERBURY

DATE 4-28-03

ROUTE S.R. 110

H.C. BROWN

WEATHER WINDY

COUNTY HENRY

R.C. BEAMOUNT

TEMP. +70°

TOWNSHIP HARRISON

SECTION 10

T 5 N R 7 E

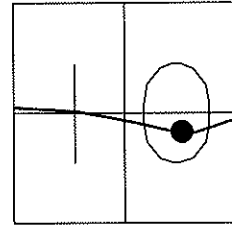
TYPE MONUMENT "A"---1" IRON PIPE

ON SURFACE - ~~BELOW~~ 3"

~~LEFT-℄~~ PAV'T-RIGHT 26.4'

13.3' RT OF RT EDGE PAVEMENT

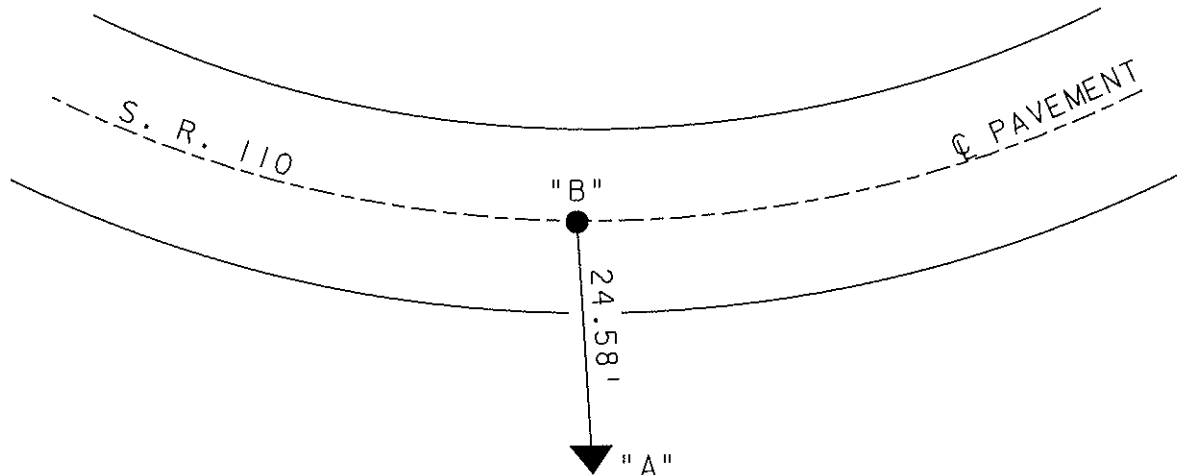
S.L.M. 259+52



REC. P.I.  
 STA. 264+86.85  
 DELTA = 18°-52' LT  
 D = 4°  
 Ls = 400'  
 Ts = 438.63'  
 E = 24.35

"B" c.p.o.c.  
 FD P.K./WASHER  
 1.5' RT ℄  
 10.2' TO RT E.O.P.  
 259±52

RESET MAG NAIL & WASHER  
 6-23-03  
 MB



# O.D.O.T. DISTRICT 2 SURVEY OFFICE

PERSONNEL \_\_\_\_\_

REFERENCE NO. 11C

SHEET 33 OF 34

NOTES LOHRKE

H.C. CURTIS

DATE 9-20-92

ROUTE S.R. 110

R.C. ROMETO

WEATHER WINDY

COUNTY HENRY

TEMP. +70

TOWNSHIP HARRISON

SECTION 10

T5 NR 7 E

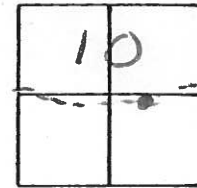
TYPE MONUMENT PI 1" PIPE

~~ON SURFACE~~ - BELOW 2"

~~LEFT - C~~ PAV'T. - RIGHT 26.4

~~13.3~~ <sup>RT</sup> ~~10~~ <sup>RT</sup> ~~RT~~ EDGE PAVEMENT

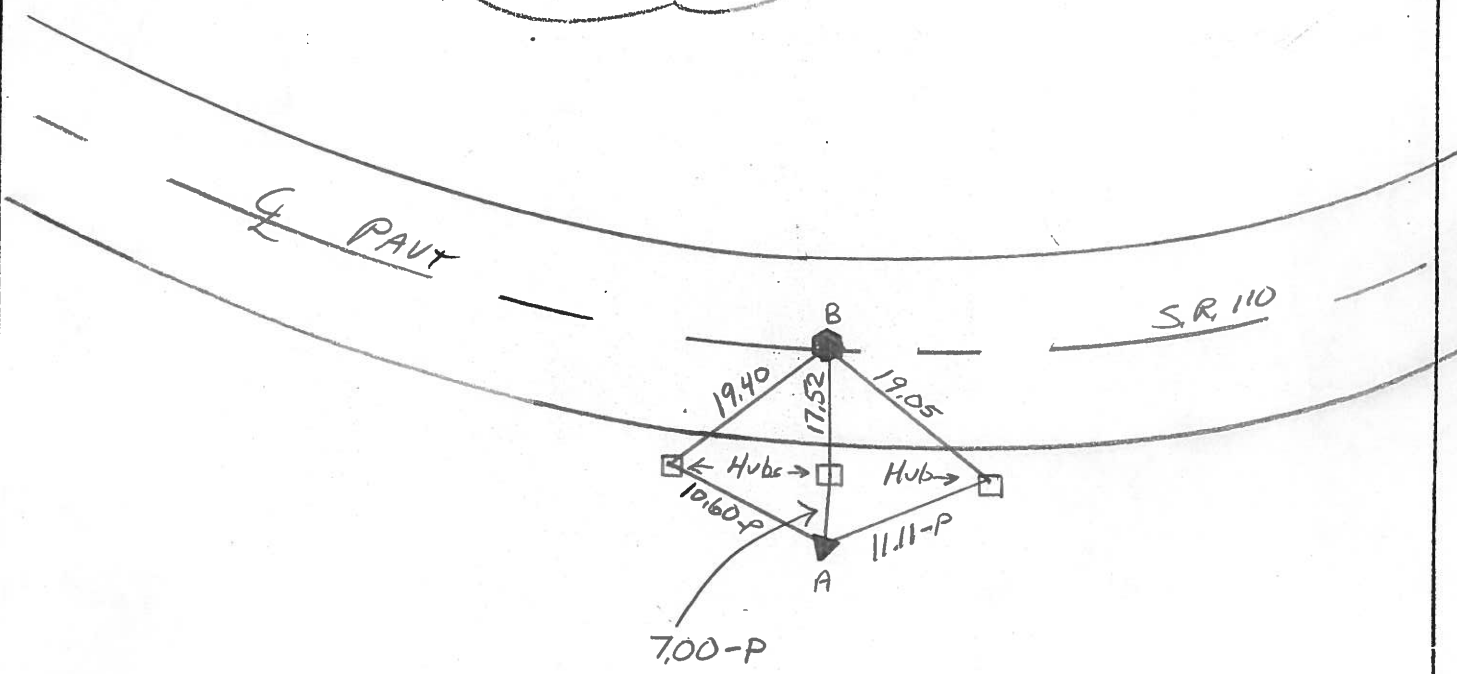
S.L.M. 259 + 52



REC. P.I.  
Sta 264+86.85  
 $\Delta = 18^{\circ} 52' \text{ Lt}$   
 $D = 4^{\circ}$   
 $L_s = 400'$   
 $T_s = 438.63'$   
 $E = 24.35$

Pt. B RESET P.K/WASHER  
10-27-92  
C.P.O.C.  
Sm. R.R. SPIKE  
1.3' RT & PAVT  
SLM = 259+52

Between = 24.51



QDOT DISTRICT 2 SURVEY OFFICE

SHEET \_\_\_\_\_ OF \_\_\_\_\_

County HENRY S. R. 110

Date \_\_\_\_\_

Township HARRISON

Weather \_\_\_\_\_

Section 10

Temp. \_\_\_\_\_

T5N, R7E

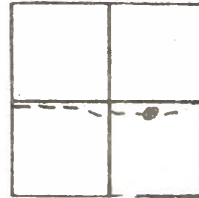
Personnel BARNHISEL HC

HOUSEHOLDER RL

Hoffman

LOEHRKE

HC



PI. 1" PIPE

Rt of REP

CPOC

5/8" Pipe

1.2. Rt of REP

11.3. REP

11.8 LEP

SLM 259+63

PI STA 264+06.85

$\Delta - 18' 52''$  LF

$D_c = 4^\circ$

$L_s - 400'$

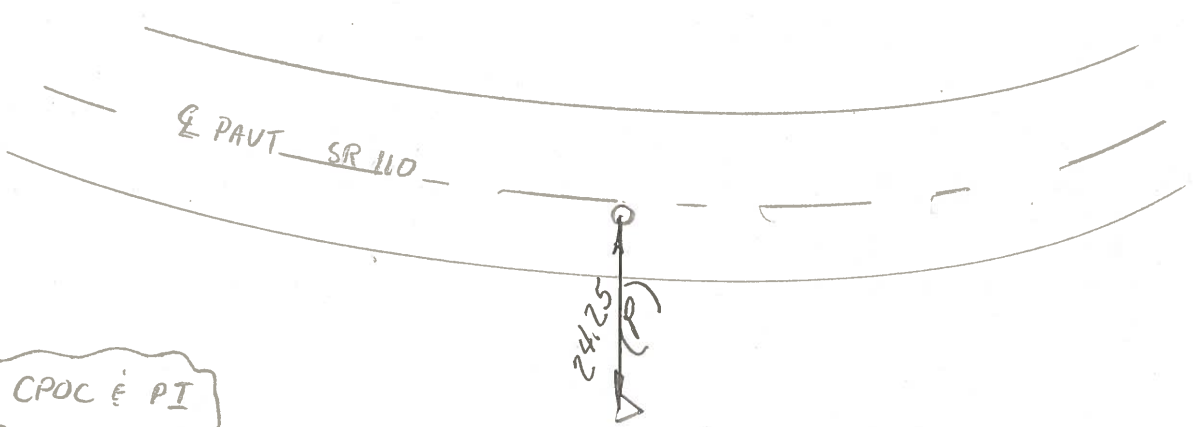
$T_s - 438.63$

$E_s - 24.35'$

SET Small R.R. Spk.

6/6/84

S.W.H.



Between CPOC & PI  
24.35 REC.

PERSONNEL TITLE PERSONNEL TITLE

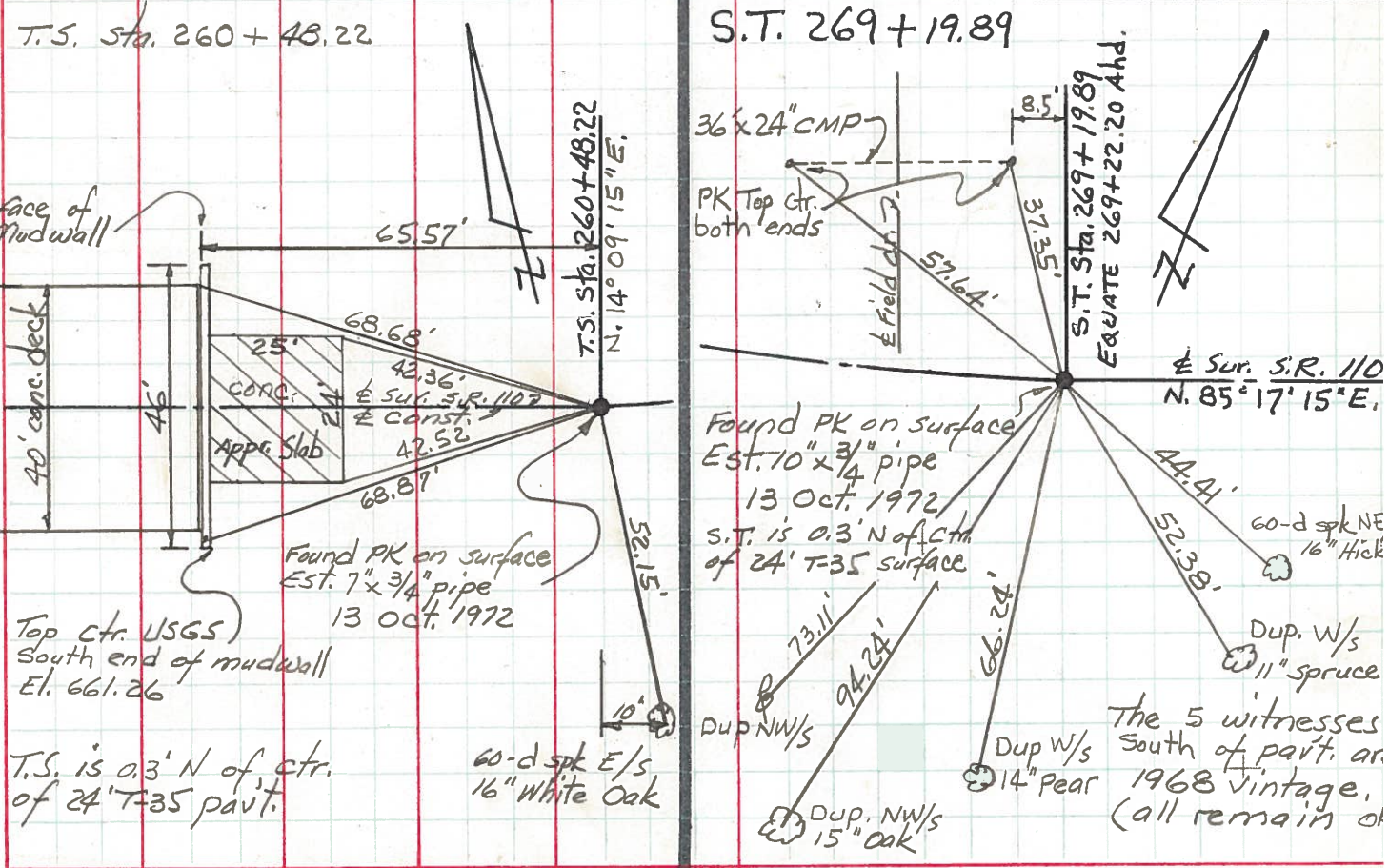
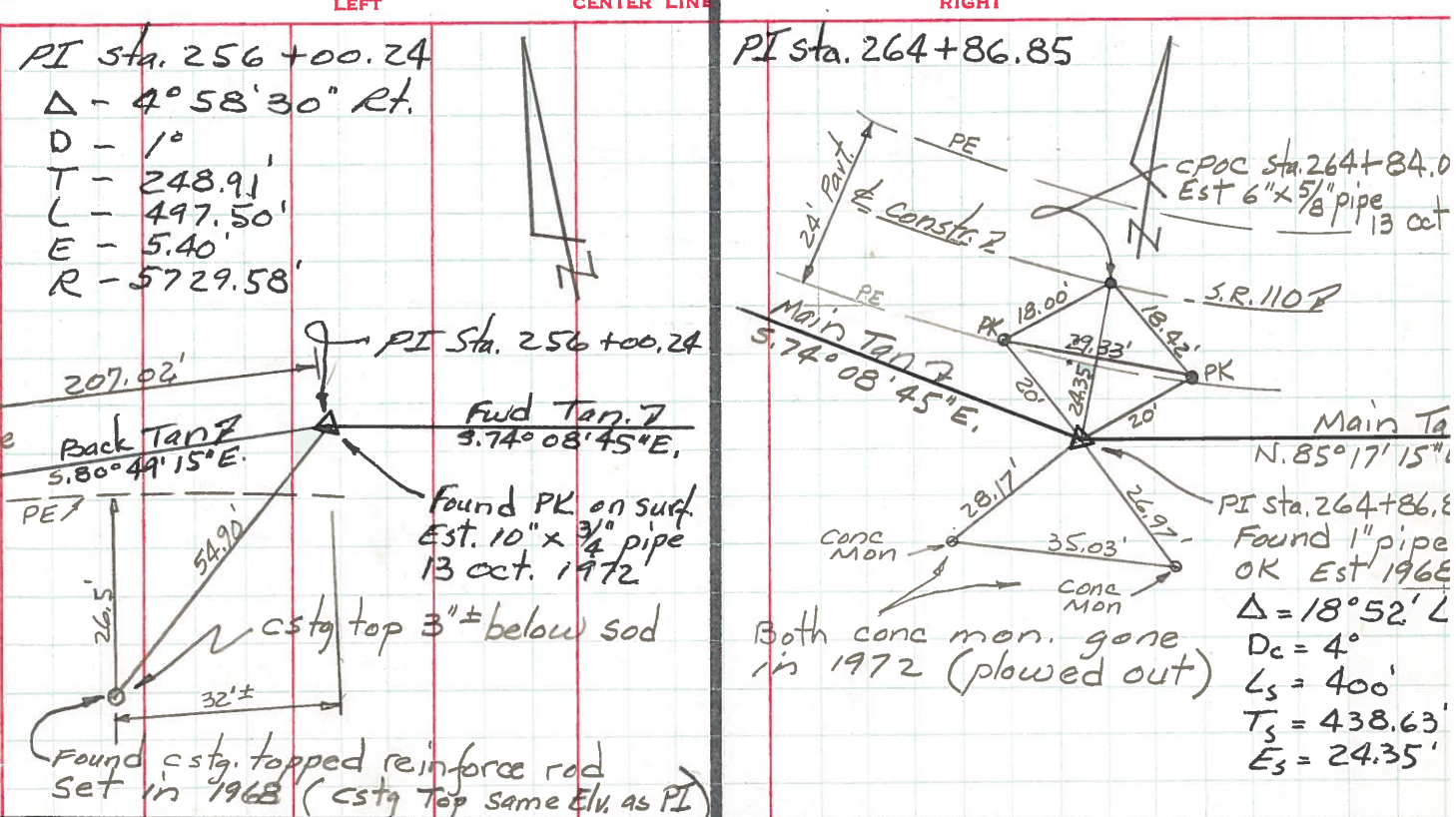
Red Beach  
Newcomb  
Knape

COUNTY HENRY DATE Oct 1972

S. R. 110 WEATHER

SEC. Harrison Twp TEMP.

DESCRIPTION CONTROL POINTS JOB NO.





PERSONNEL	TITLE	PERSONNEL	TITLE
Ernsthausen			
Donaldson			
Tefft			

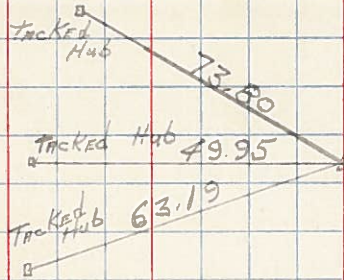
COUNTY Henry DATE 11-21-58

S. R. 110 WEATHER Part Cloud

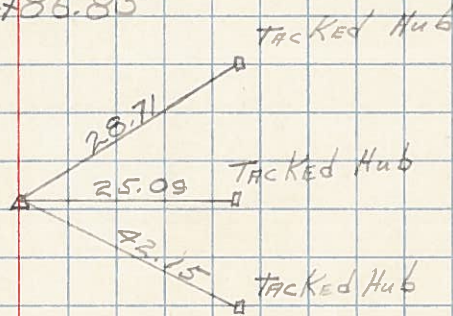
SEC. TEMP. +32°

DESCRIPTION Ties To P.I.'s LEFT CENTER LINE RIGHT JOB NO.

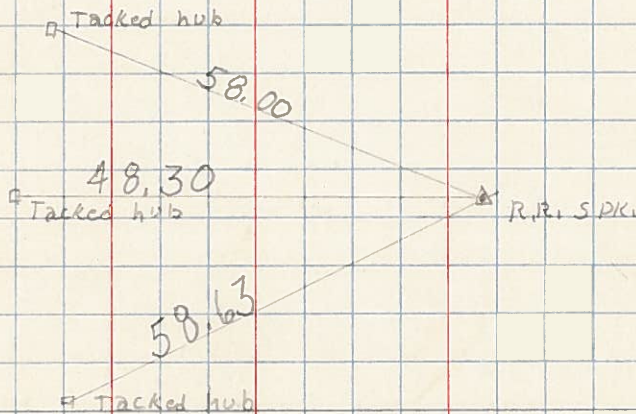
280+41.65



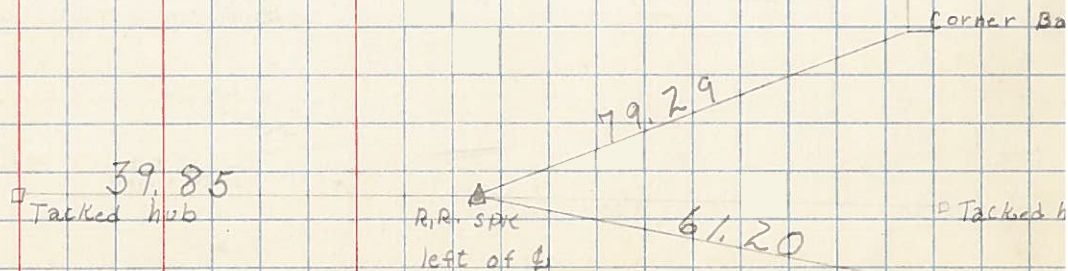
264+86.85



256+00.24

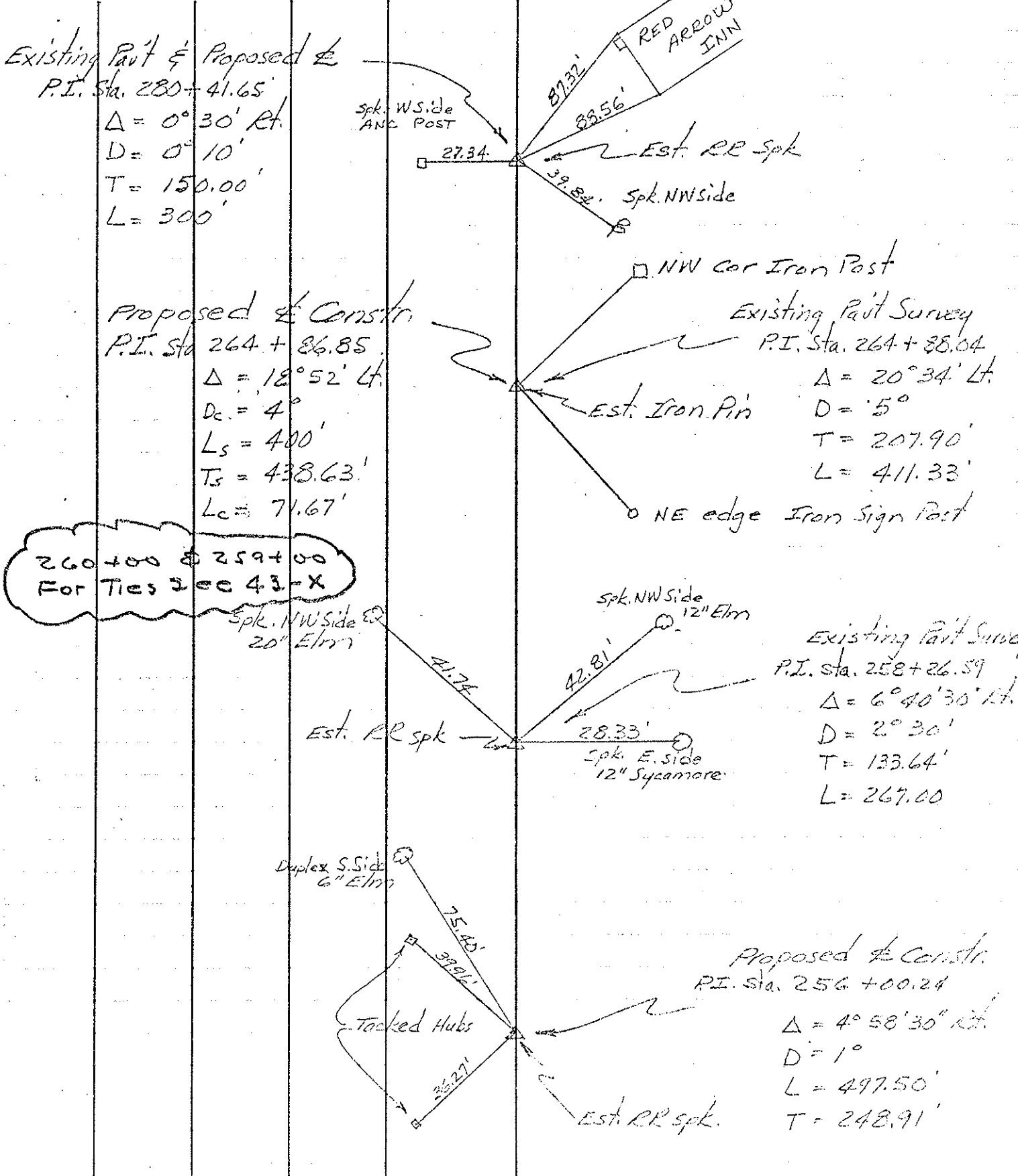


240+77.42



PERSONNEL	TITLE	PERSONNEL	TITLE	COUNTY	DATE
Beach				Henry	9 Jan 58
Armbruster				S. R. 110	WEATHER
Harris				SEC. 2.22	TEMP.
Delvanthal					

DESCRIPTION Control Points 5 JOB NO. \_\_\_\_\_



Existing Pavt & Proposed  
 P.I. Sta. 280+41.65  
 $\Delta = 0^\circ 30' \text{ Rt.}$   
 $D = 0^\circ 10'$   
 $T = 150.00'$   
 $L = 300'$

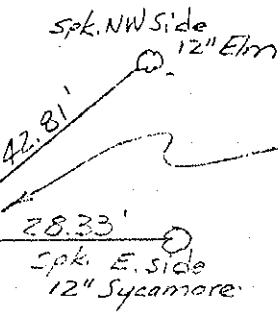
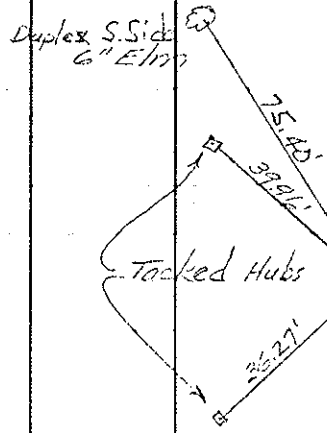
Proposed & Constr.  
 P.I. Sta. 264+86.85  
 $\Delta = 18^\circ 52' \text{ Lt.}$   
 $D_c = 4^\circ$   
 $L_s = 400'$   
 $T_s = 438.63'$   
 $L_c = 71.67'$

Existing Pavt Survey  
 P.I. Sta. 264+38.04  
 $\Delta = 20^\circ 34' \text{ Lt.}$   
 $D = 5^\circ$   
 $T = 207.90'$   
 $L = 411.33'$

Existing Pavt Survey  
 P.I. Sta. 258+26.59  
 $\Delta = 6^\circ 40' 30'' \text{ Lt.}$   
 $D = 2^\circ 30'$   
 $T = 133.64'$   
 $L = 267.00'$

Proposed & Constr.  
 P.I. Sta. 256+00.24  
 $\Delta = 4^\circ 58' 30'' \text{ Rt.}$   
 $D = 1^\circ$   
 $L = 497.50'$   
 $T = 248.91'$

260+00 & 259+00  
 For Ties see 43-X



Spk. W Side  
 ANC POST

NW cor Iron Post

Est. Iron Pin

NE edge Iron Sign Post

Est. RR spk

Spk. E. Side  
 12" Sycamore

Est. RR spk.

