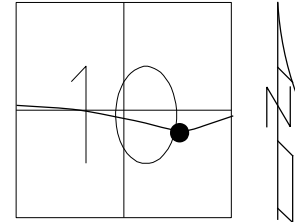


O.D.O.T. DISTRICT 2 SURVEY OFFICE (USE ONLY)

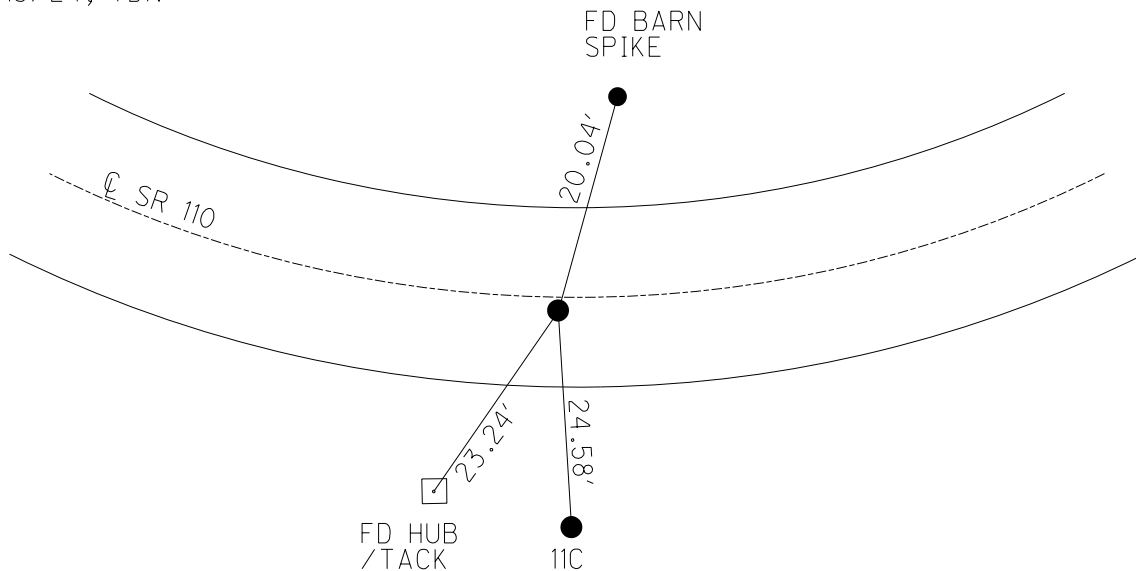
PERSONNEL	REFERENCE NO. <u>11 CA</u>	SHEET <u>50</u> OF <u>51</u>
NOTES <u>MILLER</u>	DATE <u>3/13/24</u>	ROUTE <u>SR 110</u>
H.C. <u>NIESE</u>	WEATHER <u>SUNNY</u>	COUNTY <u>HENRY</u>
R.C. <u>RHOADES</u>	TEMP. <u>55°</u>	TOWNSHIP <u>HARRISON</u>
		SECTION <u>10</u>
DWG BY <u>RHOADES</u>	PID <u>94321</u>	T <u>5</u> N R <u>7</u> E

TYPE MONUMENT MAG/WASHER  
 ON SURFACE - ~~BELOW~~ ON  
 OFFSET 1.5' RT : RT  
10.2' TO RT EDGE PAVEMENT  
 STATION: 259+64.96



HORZ. DATUM: NAD83 2011 GEOID: NAVD88 2018  
 GRID: NORTHING: 637457.710 EASTING: 1545048.518

RECORD: C.P.O.C.  
 FD P.K./WASHER  
 4/28/03, MC  
 SET MAG/WASHER  
 6/23/03, MB  
 FD MAG/WASHER  
 REFCA11  
 5/6/21, JFO  
 8/17/23, TDN  
 SET MAG/WASHER  
 3/13/24, TDN



O.D.O.T. DISTRICT 2 SURVEY OFFICE (USE ONLY)

PERSONNEL

REFERENCE NO. 11 C

SHEET 42 OF 44

NOTES ASTON

DATE 8/17/23

ROUTE SR 110

H.C. NIESE

WEATHER WINDY

COUNTY HENRY

R.C. RHOADES

TEMP. 70°

TOWNSHIP HARRISON

AUBLE

SECTION 10

DWG BY RHOADES PID 94321

T 5 N R 7 E

TYPE MONUMENT 1" IPIPE

~~ON SURFACE~~ - BELOW 3"

OFFSET  $\odot$  PAVEMENT 26.4' ~~±~~ : RT

13.3' RT TO RT EDGE PAVEMENT

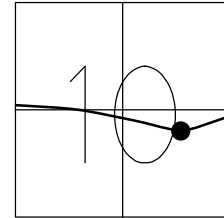
STATION: 259+65.03

HORIZ.DATUM: NAD83 2011

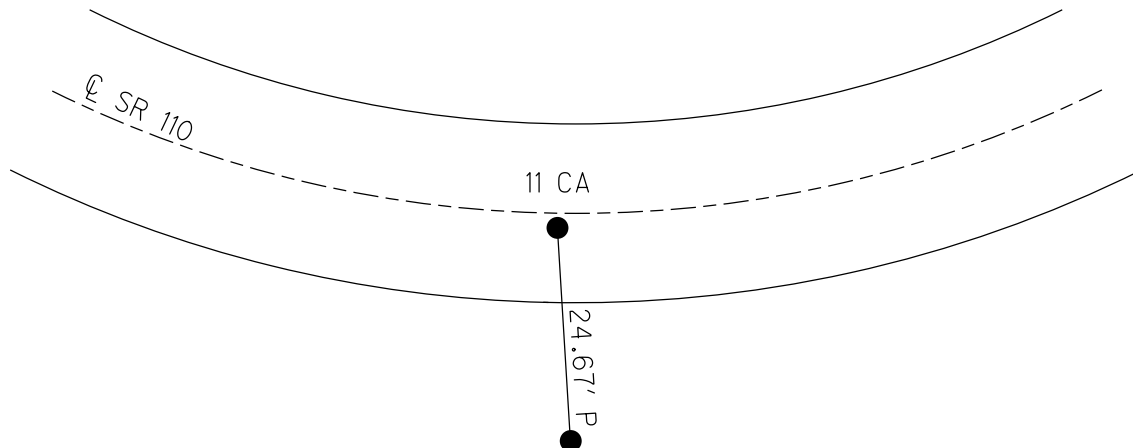
GEOID: NAVD88 2018

GRID: NORTHING: 637433.224

EASTING: 1545046.986



RECORD: P.I.  
 STA. 264+86.85  
 $\Delta = 18^{\circ}52'$  LT  
 $D = 4^{\circ}$   
 $LS = 400'$   
 $TS = 438.63'$   
 $E = 24.35$   
 FD 1" IPIPE  
 3" DOWN  
 4-28-03, MC  
 FD 3/4" IPIPE  
 REFC11  
 5/6/21, JFO  
 8/17/23, TDN



O.D.O.T. DISTRICT 2 SURVEY OFFICE

PERSONNEL

REFERENCE NO. 11-C

SHEET 25 OF 26

NOTES CANTERBURY

DATE 4-28-03

ROUTE S.R. 110

H.C. BROWN

WEATHER WINDY

COUNTY HENRY

R.C. BEAMOUNT

TEMP. +70°

TOWNSHIP HARRISON

SECTION 10

T 5 N R 7 E

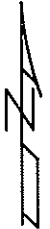
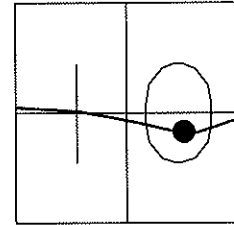
TYPE MONUMENT "A"---1" IRON PIPE

ON SURFACE - ~~BELOW~~ 3"

~~LEFT-C~~ PAV'T-RIGHT 26.4'

13.3' RT OF RT EDGE PAVEMENT

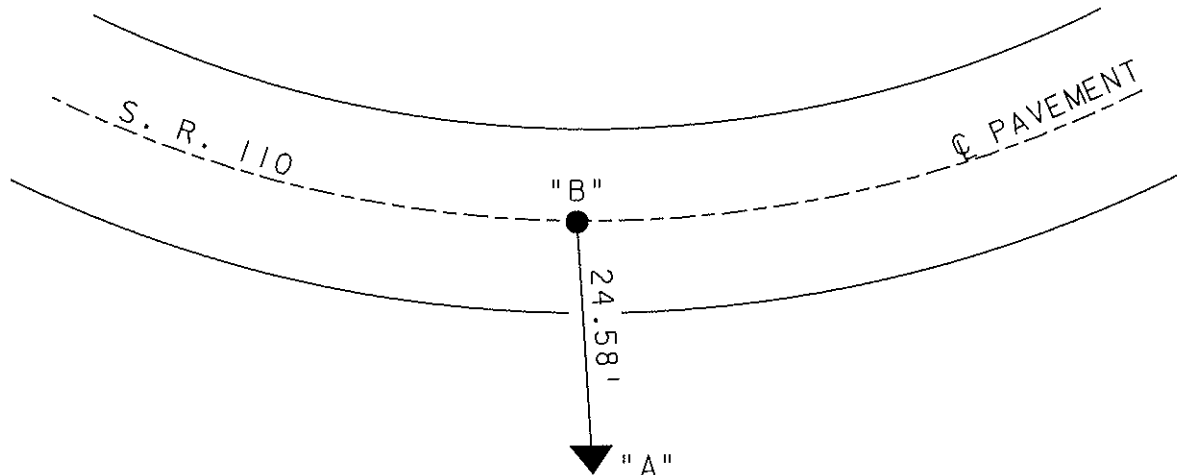
S.L.M. 259+52



REC. P.I.  
 STA. 264+86.85  
 DELTA = 18°-52' LT  
 D = 4°  
 Ls = 400'  
 Ts = 438.63'  
 E = 24.35

"B" c.p.o.c.  
 FD P.K./WASHER  
1.5' RT C  
10.2' TO RT E.O.P.  
259±52

RESET MAG NAIL & WASHER  
6-23-03  
 MB



# O.D.O.T. DISTRICT 2 SURVEY OFFICE

PERSONNEL \_\_\_\_\_

REFERENCE NO. 11C

SHEET 33 OF 34

NOTES LOEHRKE

H.C. CURTIS

DATE 9-20-92

ROUTE S.R. 110

R.C. ROMETO

WEATHER WINDY

COUNTY HENRY

TEMP. +70

TOWNSHIP HARRISON

SECTION 10

T 5 N R 7 E

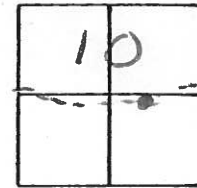
TYPE MONUMENT PI 1" PIPE

~~ON SURFACE~~ - BELOW 2"

~~LEFT - C~~ PAV'T. - RIGHT 26.4

~~13.3~~ <sup>RT</sup> ~~10~~ <sup>RT</sup> EDGE PAVEMENT

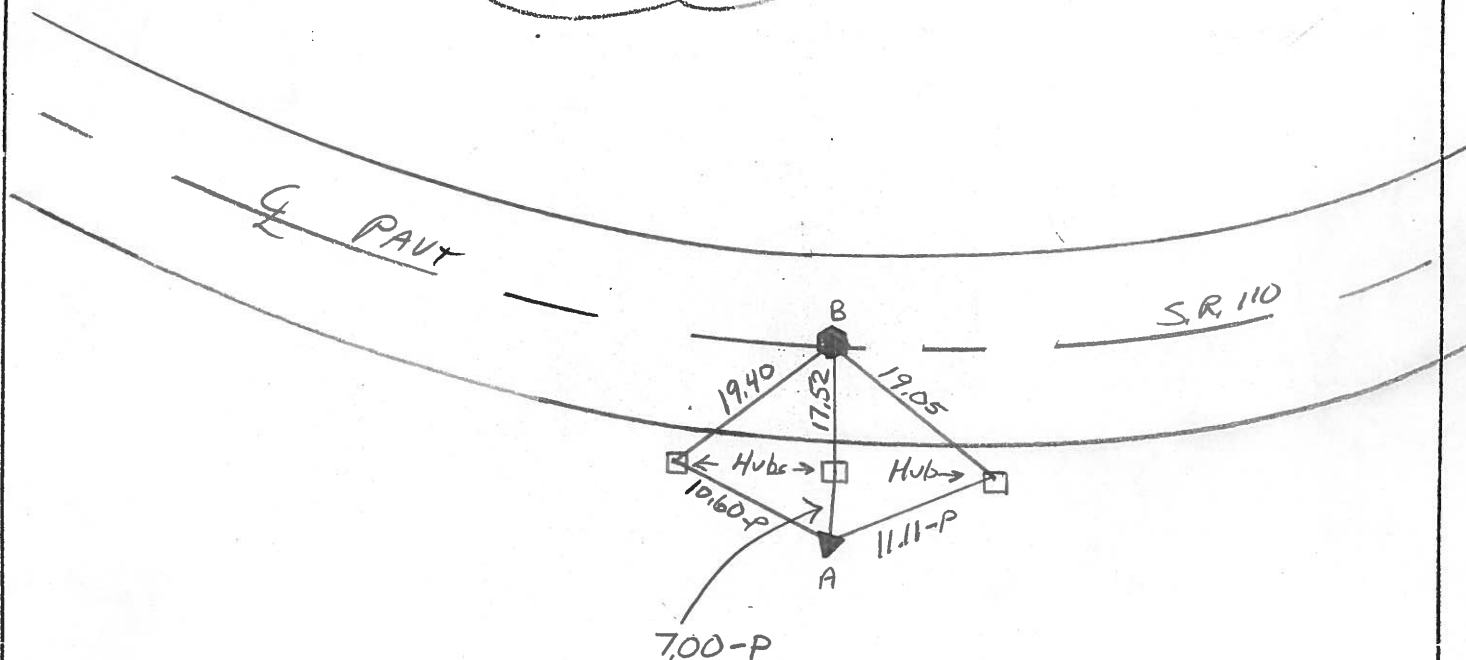
S.L.M. 259 + 52



REC. P.I.  
Sta 264+86.85  
 $\Delta = 18^{\circ} 52' \text{ Lt}$   
 $D = 4^{\circ}$   
 $L_s = 400'$   
 $T_s = 438.63'$   
 $E = 24.35$

Pt. B RESET P.K/WASHER  
10-27-92  
C.P.O.C.  
Sm. R.R. SPIKE  
1.3' RT C PAVT  
SLM = 259+52

Between = 24.51



QDOT DISTRICT 2 SURVEY OFFICE

SHEET \_\_\_\_\_ OF \_\_\_\_\_

County HENRY S. R. 110

Date \_\_\_\_\_

Township HARRISON

Weather \_\_\_\_\_

Section 10

Temp. \_\_\_\_\_

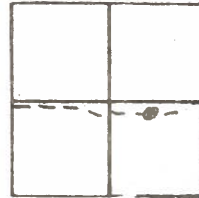
T 5N, R 7E

Personnel BARNHISEL HC

~~HOUSEHOLDER~~ RL

*HC* Hoffman

LOEHRKE



PI. 1" PIPE

Rt of REP

CPOC

5/8" Pipe

l. 2. Rt of REP

11.3. REP

11.8 LEP

SLM 259+63

PI STA 264+06.85

$\Delta - 18' 52''$  LF

$D_c = 4^\circ$

$L_s - 400'$

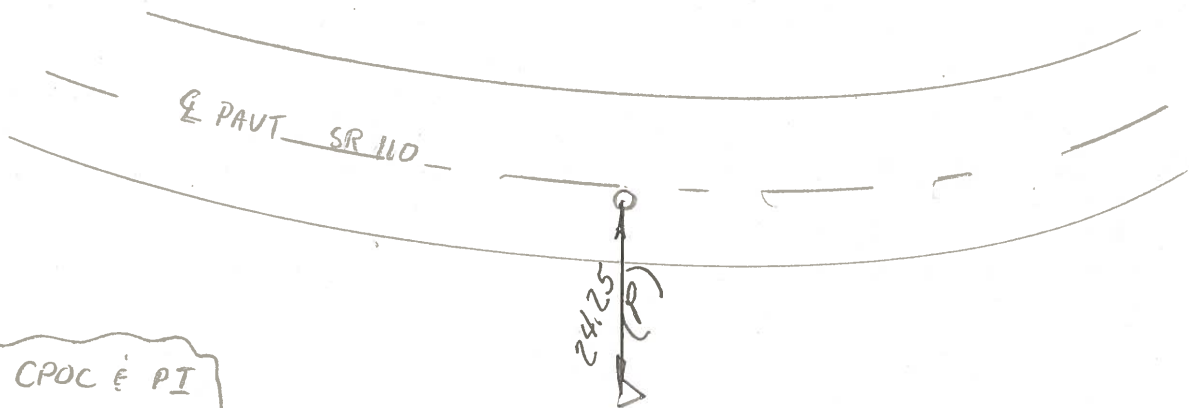
$T_s - 438.63$

$E_s - 24.35'$

SET Small R.R. Spk.

6/6/84

S.W.H.



Between CPOC & PI

24.35 REC.

PERSONNEL TITLE PERSONNEL TITLE

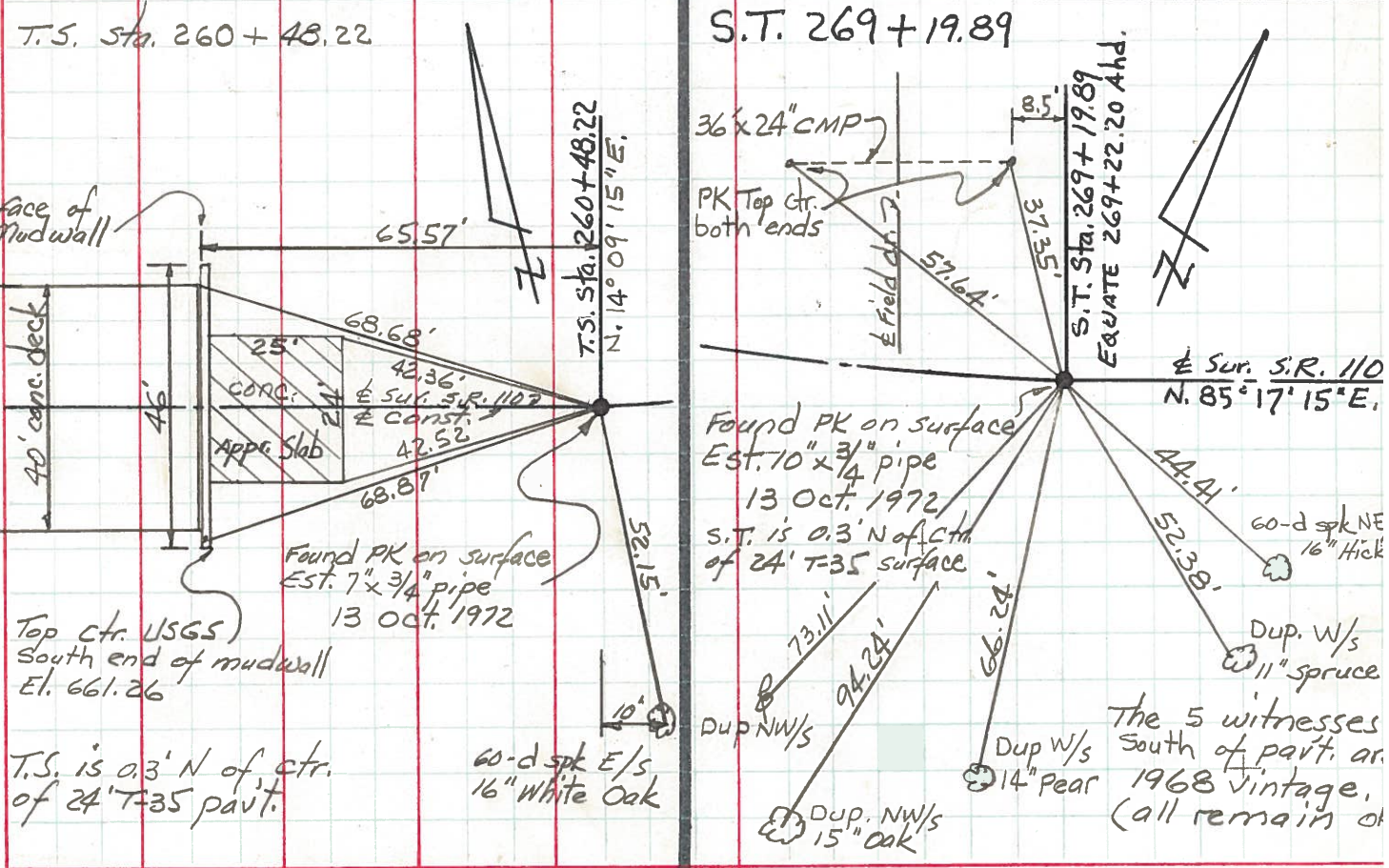
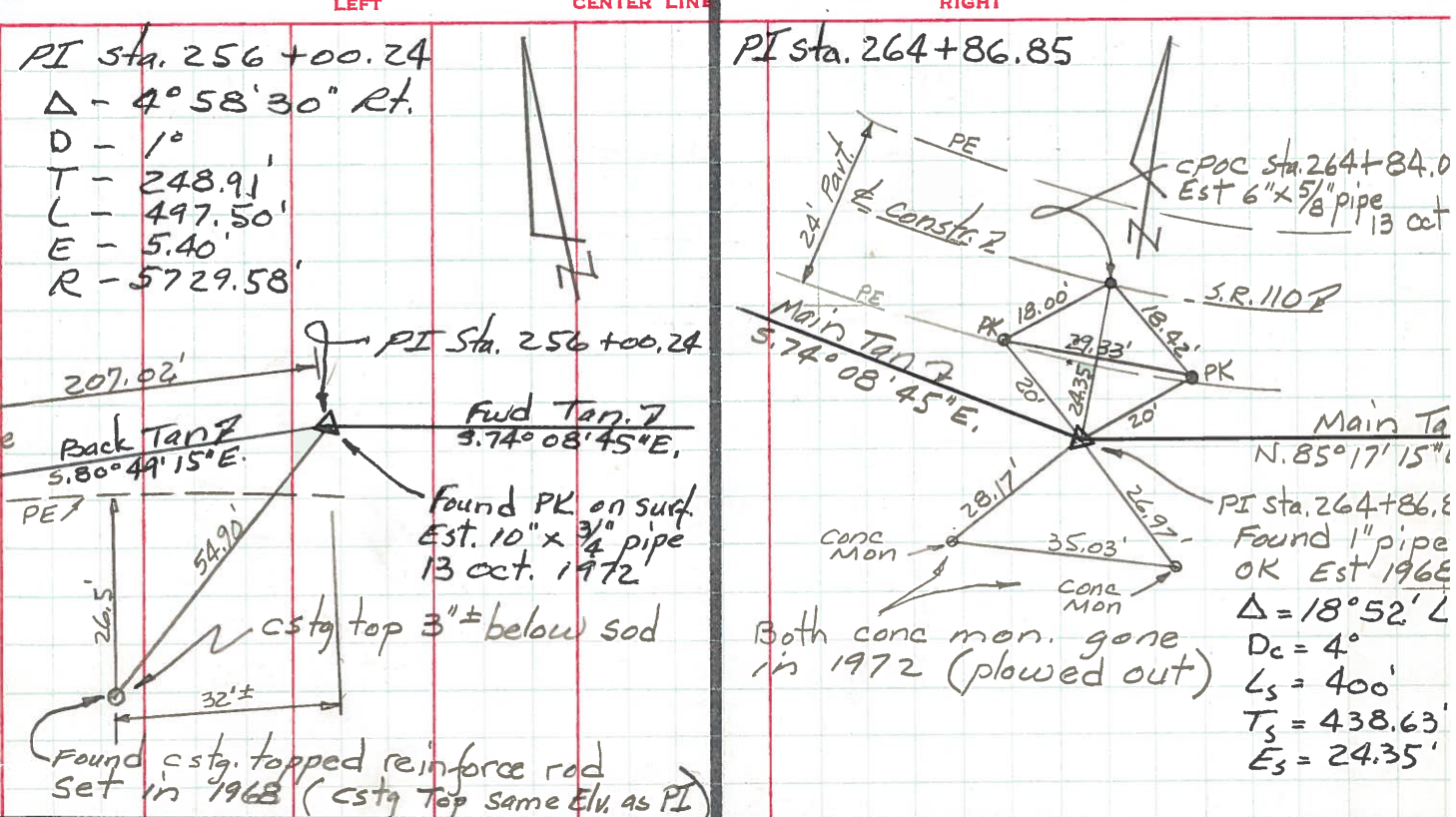
Red Beach  
Newcomb  
Knape

COUNTY HENRY DATE Oct 1972

S. R. 110 WEATHER

SEC. Harrison Twp TEMP.

DESCRIPTION CONTROL POINTS JOB NO.



PERSONNEL	TITLE	PERSONNEL	TITLE
Ernsthausen			
Donaldson			
Tefft			

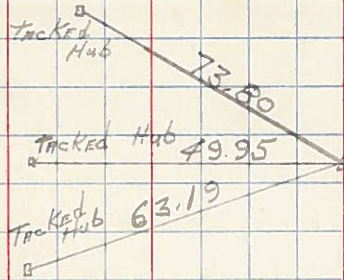
COUNTY Henry DATE 11-21-58

S. R. 110 WEATHER Part Cloud

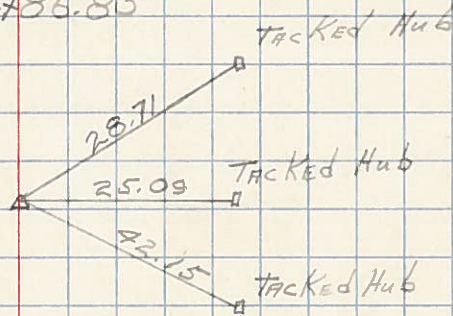
SEC. TEMP. +32°

DESCRIPTION Ties To P.I.'s LEFT CENTER LINE RIGHT JOB NO.

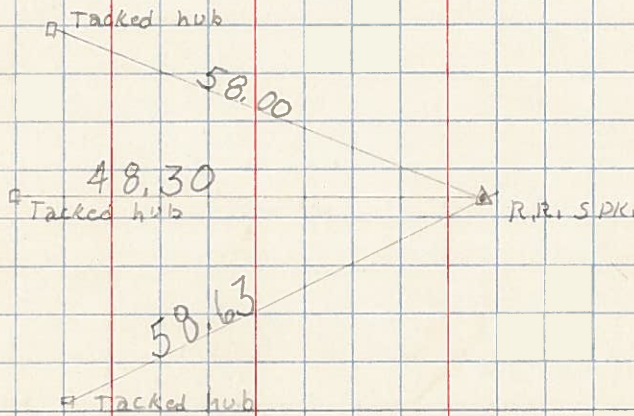
280+41.65



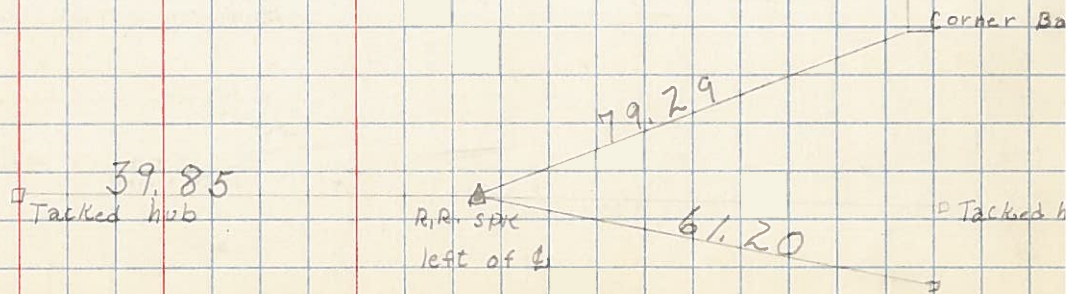
264+86.85



256+00.24

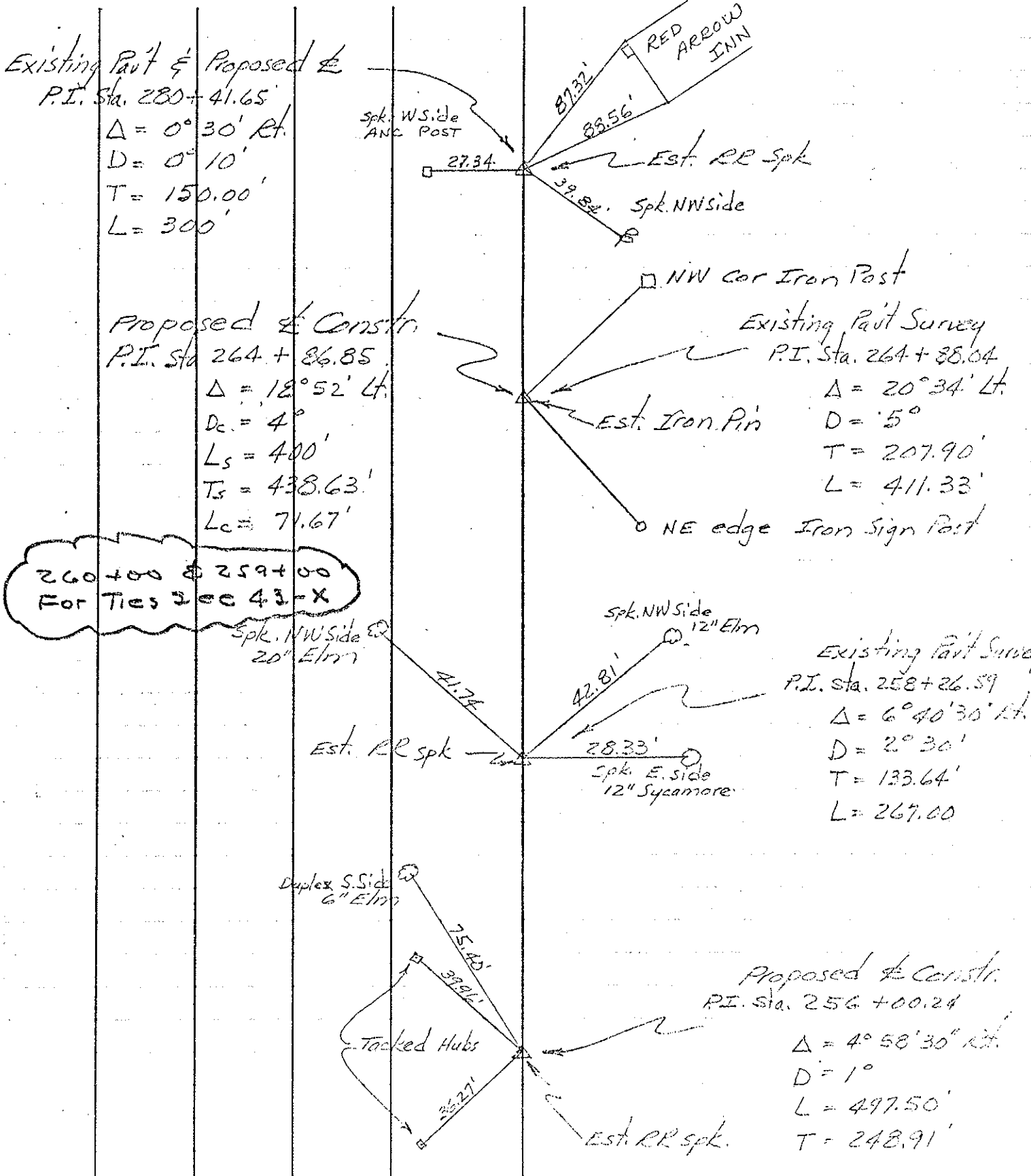


240+77.42



PERSONNEL	TITLE	PERSONNEL	TITLE	COUNTY	DATE
Beach				Henry	9 Jan 58
Armbruster				S. R. 110	WEATHER
Harris				SEC. 2.22	TEMP.
Delvanthal					

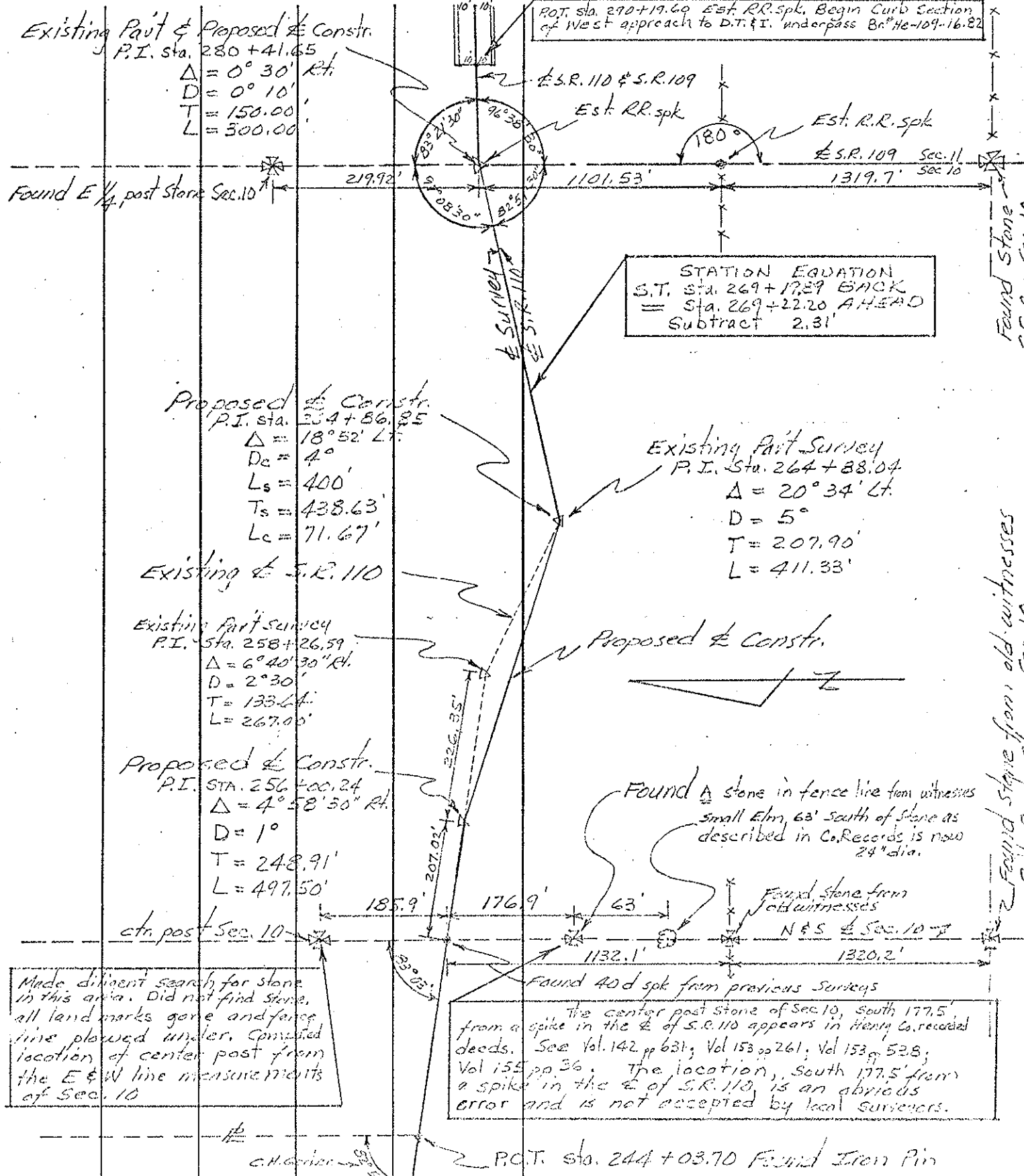
DESCRIPTION Control Points 5 JOB NO. \_\_\_\_\_



260+00 & 259+00  
 For Ties see 43-X



PERSONNEL	TITLE	PERSONNEL	TITLE	COUNTY	DATE
Beach		Hoff		Henry	Dec. 1957
Armbruster	x	Harris		S. R.	110
Eutter		Ruchener		WEATHER	
Knappe		Delvanthal		SEC.	2.22
DESCRIPTION	Alignment sheet # 6			TEMP.	
	LEFT	CENTER LINE	RIGHT	JOB NO.	



P.O.T. Sta. 270 + 19.69 Est. RR. spk. Begin Curb Section of West approach to D.T. & I. underpass Br. #e-109-16.82

STATION EQUATION  
 S.T. Sta. 269 + 17.29 BACK  
 = Sta. 269 + 22.20 AHEAD  
 Subtract 2.31'

Existing Part Survey  
 P.I. Sta. 264 + 88.04  
 Δ = 20° 34' Lt.  
 D = 5°  
 T = 207.90'  
 L = 411.33'

Proposed Constr.  
 P.I. Sta. 254 + 86.85  
 Δ = 18° 52' Lt.  
 Dc = 4°  
 Ls = 400'  
 Ts = 438.63'  
 Lc = 71.67'

Existing Part Survey  
 P.I. Sta. 258 + 26.59  
 Δ = 6° 40' 30" Rt.  
 D = 2° 30'  
 T = 133.64'  
 L = 267.00'

Proposed Constr.  
 P.I. Sta. 256 + 00.24  
 Δ = 4° 58' 50" Rt.  
 D = 1°  
 T = 248.91'  
 L = 497.50'

Made diligent search for stone in this area. Did not find stone, all land marks gone and fence line plowed under. Computed location of center post from the E & W line measurements of Sec. 10

Found 40 d spike from previous surveys  
 The center post stone of Sec. 10, South 177.5' from a spike in the E of S.R. 110 appears in Henry Co. recorded deeds. See Vol. 142 pp 631; Vol 153 pp 261; Vol 153 pp 528; Vol 155 pp 36. The location, South 177.5' from a spike in the E of S.R. 110, is an obvious error and is not accepted by local surveyors.

Found Stone from old witnesses  
 S.E. Cor. Sec. 10

Found Stone from old witnesses  
 S.W. Cor. Sec. 10

P.C.T. Sta. 244 + 03.70 Found Iron Pin