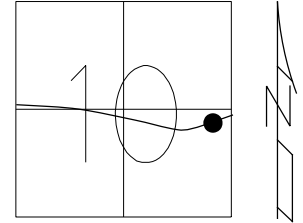


O.D.O.T. DISTRICT 2 SURVEY OFFICE (USE ONLY)

PERSONNEL _____ REFERENCE NO. 11 D SHEET 51 OF 51
 NOTES ASTON DATE 2/9/24 ROUTE SR 110
 H.C. NIESE WEATHER WINDY COUNTY HENRY
 R.C. ASTON TEMP. 56° TOWNSHIP HARRISON
 SECTION 10
 DWG BY RHOADES PID 94321 T 5 N R 7 E

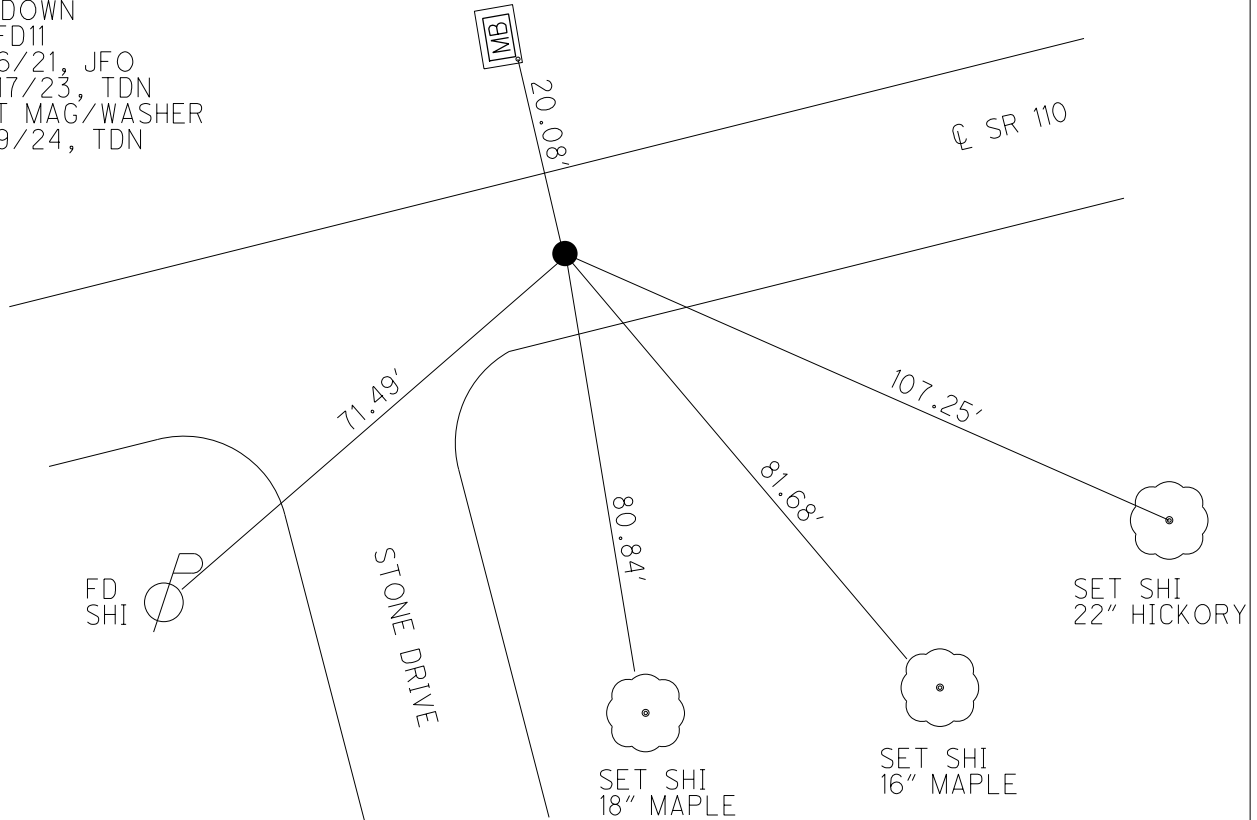
TYPE MONUMENT MAG/WASHER
 ON SURFACE - ~~BELOW~~ ON
 OFFSET ☉ PAVEMENT ON LT : RT
11.4' TO RT EDGE PAVEMENT
 STATION: 264+00.74



HORZ. DATUM: NAD83 2011 GEOID: NAVD88 2018
 GRID: NORTHING: 637477.116 EASTING: 1545483.304

RECORD: S.T.
 STA 269+19.89
 FD P.K. WASHER
 4-28-03, MC
 SET MAG/WASHER
 6-23-03, MB
 FD P.K./WASHER
 2" DOWN
 REFD11
 5/6/21, JFO
 8/17/23, TDN
 SET MAG/WASHER
 2/9/24, TDN

CTR OF COIN
 FD IN CONC
 BASE
 MB#9201



O.D.O.T. DISTRICT 2 SURVEY OFFICE (USE ONLY)

PERSONNEL

REFERENCE NO. 11 D

SHEET 44 OF 44

NOTES ASTON

DATE 8/17/23

ROUTE SR 110

H.C. NIESE

WEATHER BREEZY

COUNTY HENRY

R.C. RHOADES

TEMP. 70°

TOWNSHIP HARRISON

AUBLE

SECTION 10

DWG BY RHOADES

PID 94321

T 5 N R 7 E

TYPE MONUMENT P.K./WASHER

~~ON SURFACE~~ - BELOW 2"

OFFSET Q PAVEMENT ON _____ LT : RT

11.4' TO RT EDGE PAVEMENT

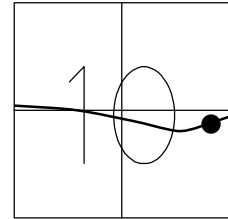
STATION: 264+00.74

HORZ.DATUM: NAD83 2011

GEOID: NAVD88 2018

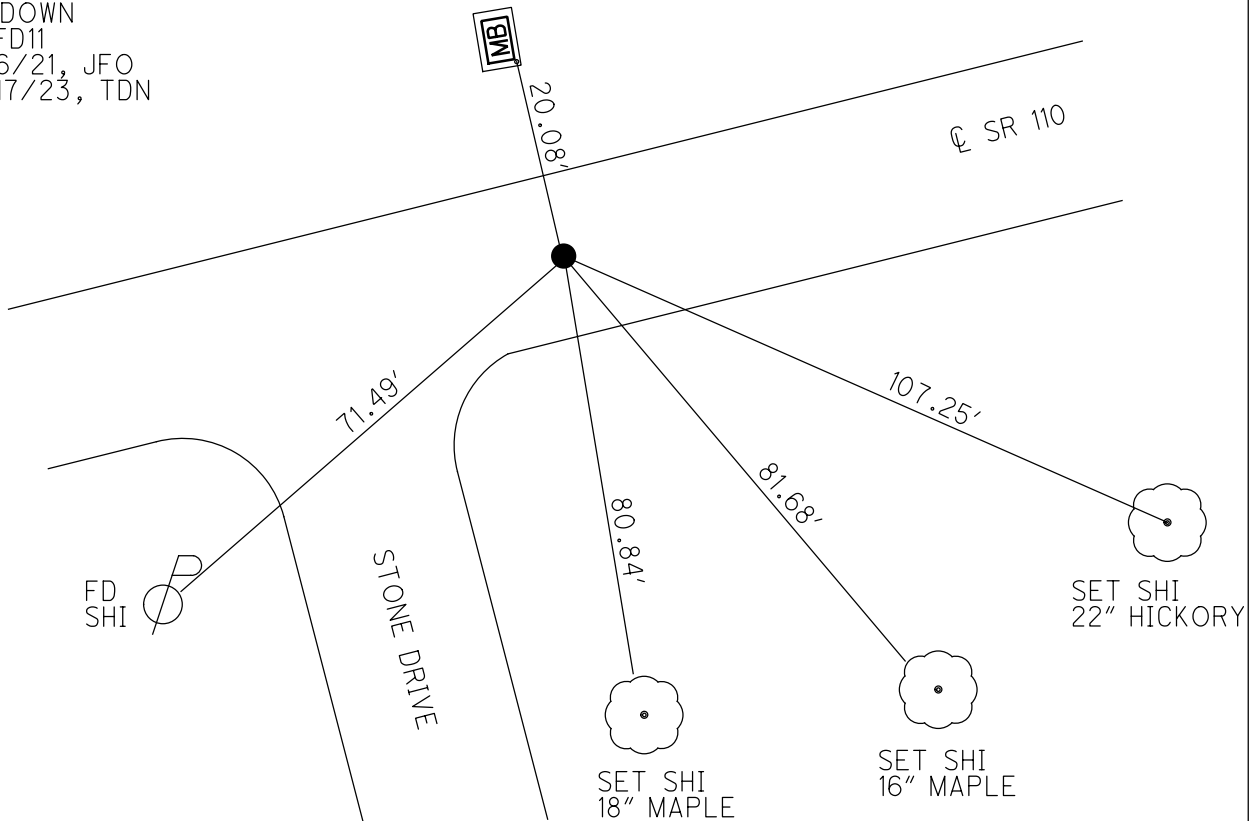
GRID: NORTHING: 637477.116

EASTING: 1545483.304



RECORD: S.T.
 STA 269+19.89
 FD P.K.WASHER
 4-28-03, MC
 SET MAG/WASHER
 6-23-03, MB
 FD P.K./WASHER
 2" DOWN
 REFD11
 5/6/21, JFO
 8/17/23, TDN

CTR OF COIN
 FD IN CONC
 BASE
 MB#9201



O.D.O.T. DISTRICT 2 SURVEY OFFICE

PERSONNEL _____

REFERENCE NO. 11-D

SHEET 26 OF 26

NOTES CANTERBURY

DATE 4-28-03

ROUTE S.R. 110

H.C. BROWN

WEATHER CLEAR

COUNTY HENRY

R.C. BEAMOUNT

TEMP. +70°

TOWNSHIP HARRISON

SECTION 10

T 5 N R 7 E

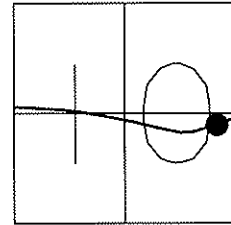
TYPE MONUMENT _____ PK/WASHER _____

ON SURFACE - ~~BELOW~~ _____ YES _____

~~LEFT-Ø PAV'T-RIGHT~~ _____ YES _____

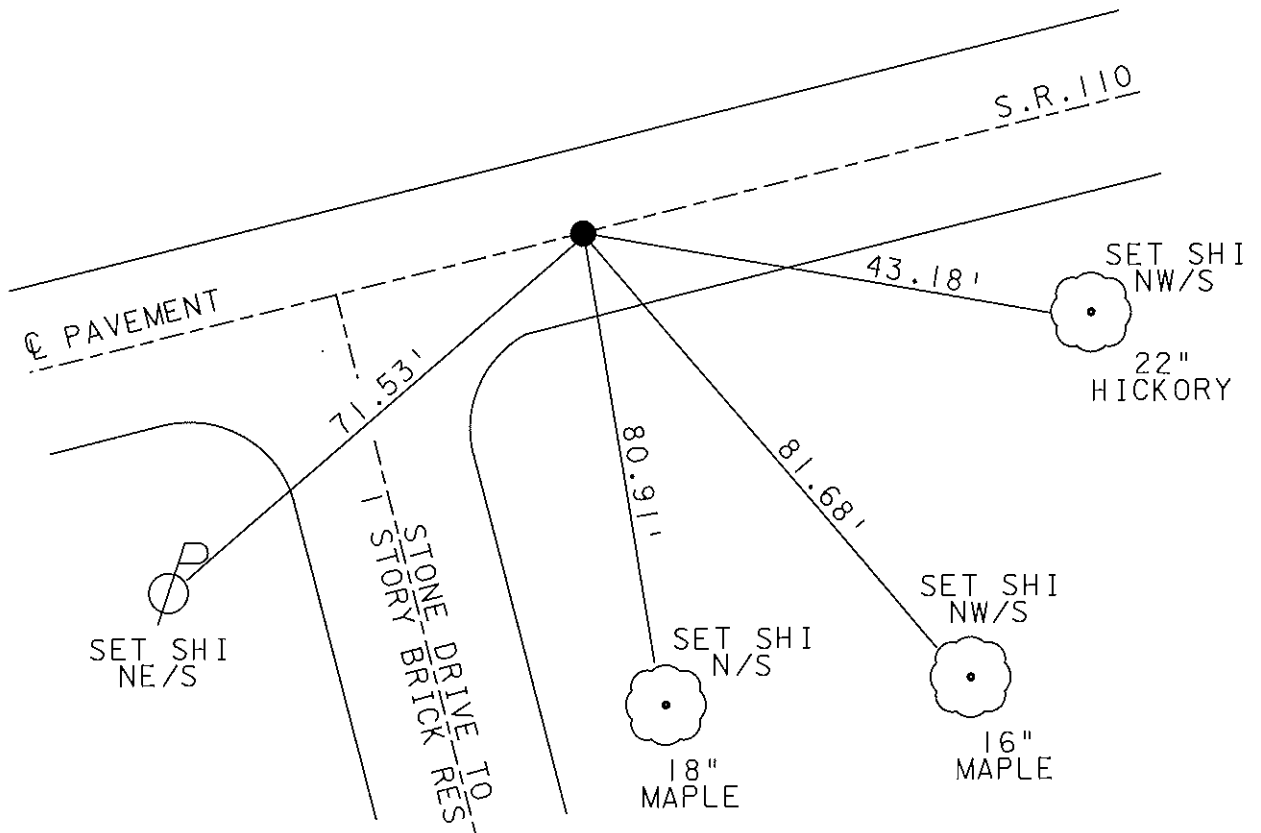
11.4' TO RT. EDGE PAVEMENT

S.L.M. _____ 263+85 _____



RECORD: S.T.
STA 269+19.89

RESET MAG NAIL & WASHER
6-23-03
MB



O.D.O.T. DISTRICT 2 SURVEY OFFICE

PERSONNEL _____

REFERENCE NO. 110

SHEET 34 OF 34

NOTES LOEHRKE

H.C. CURTIS

R.C. ROMERO

DATE 5-28-92

WEATHER CLEAR

TEMP. +74

ROUTE S.R. 110

COUNTY HENRY

TOWNSHIP HARRISON

SECTION 10

T 5 N R 7 E

Set P.K. / WASHNER
10-27-92

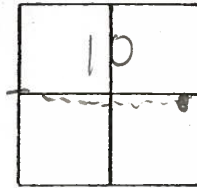
TYPE MONUMENT Sm. RR Spike

ON SURFACE - BELOW Yes

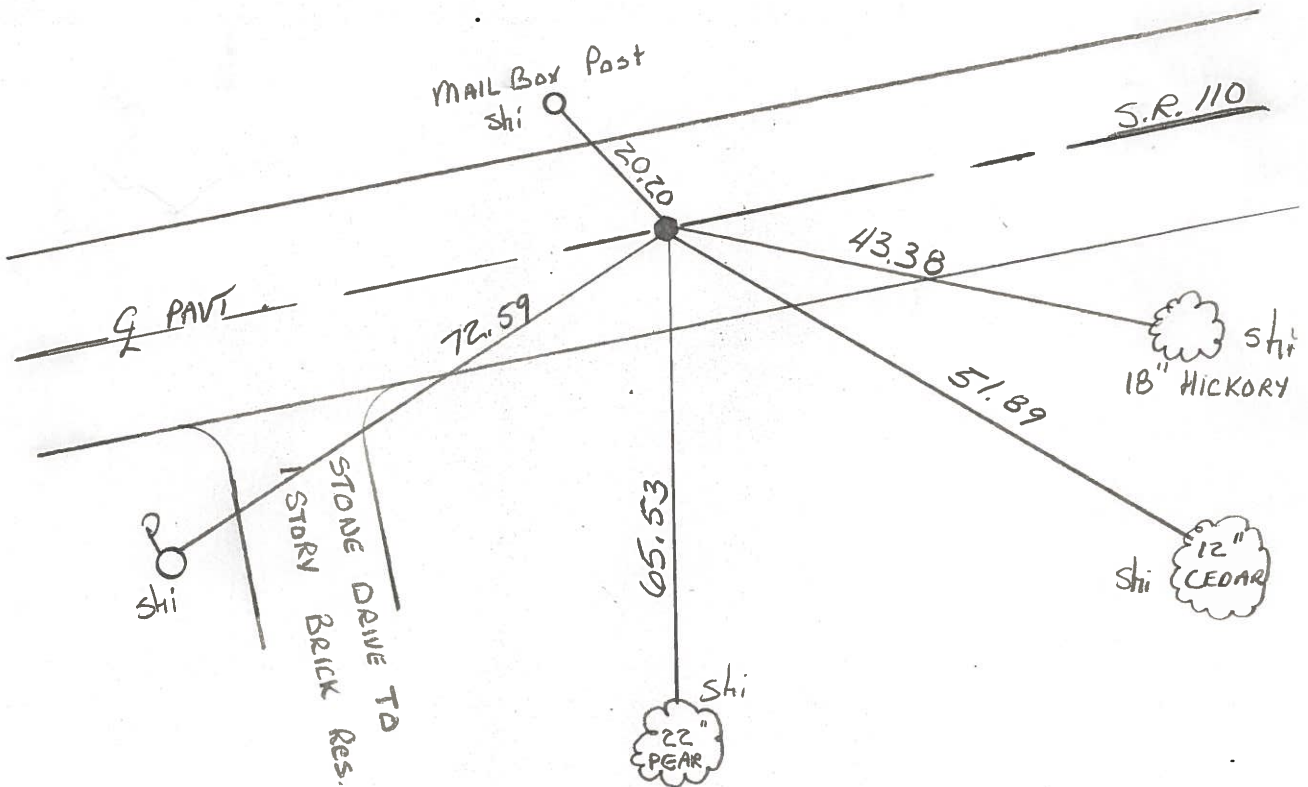
LEFT - & PAV'T. - RIGHT Yes

12.0 TO RT EDGE PAVEMENT

S.L.M. 263+85



Rec: S.T.
Sta 269+19.89



ODOT DISTRICT 2 SURVEY OFFICE

SHEET _____ OF _____

County HENRY S.R. 110

Date 2-8-84

Township HARRISON

Weather CLEAR

Section 10

Temp. +20°

T6N, R7E

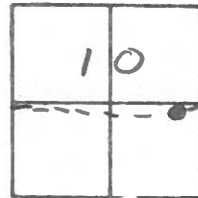
Personnel BARNHISEL HC

HOUSEHOLDER RC

110

Hoffman

LOEHRKE



ST STA 269+19.89

SLM -263+99

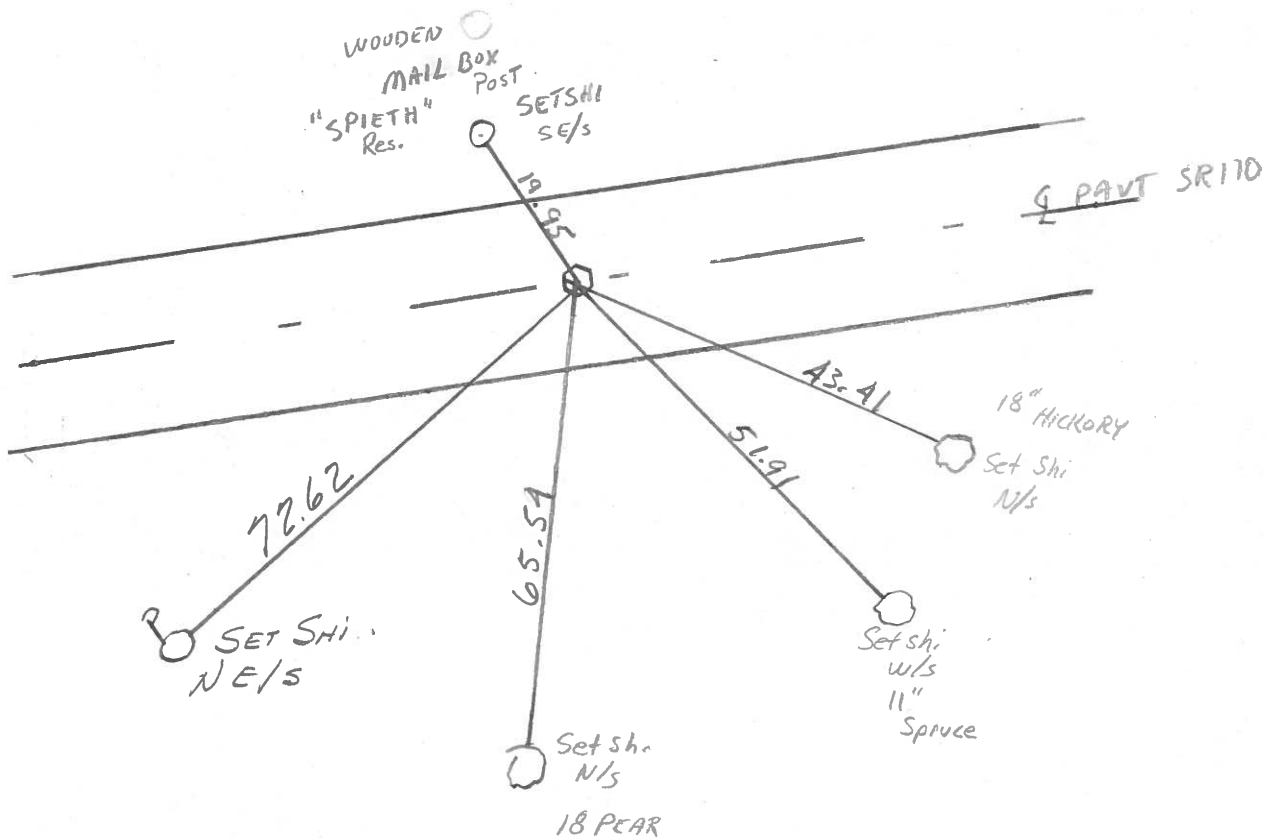
Fd 3/4" pipe @ SURFACE

ON E PAVT

11.8 to REP

11.7 to LEP

SET Small R.R. Sok.
6/6/84
S.W.H.



PERSONNEL TITLE PERSONNEL TITLE

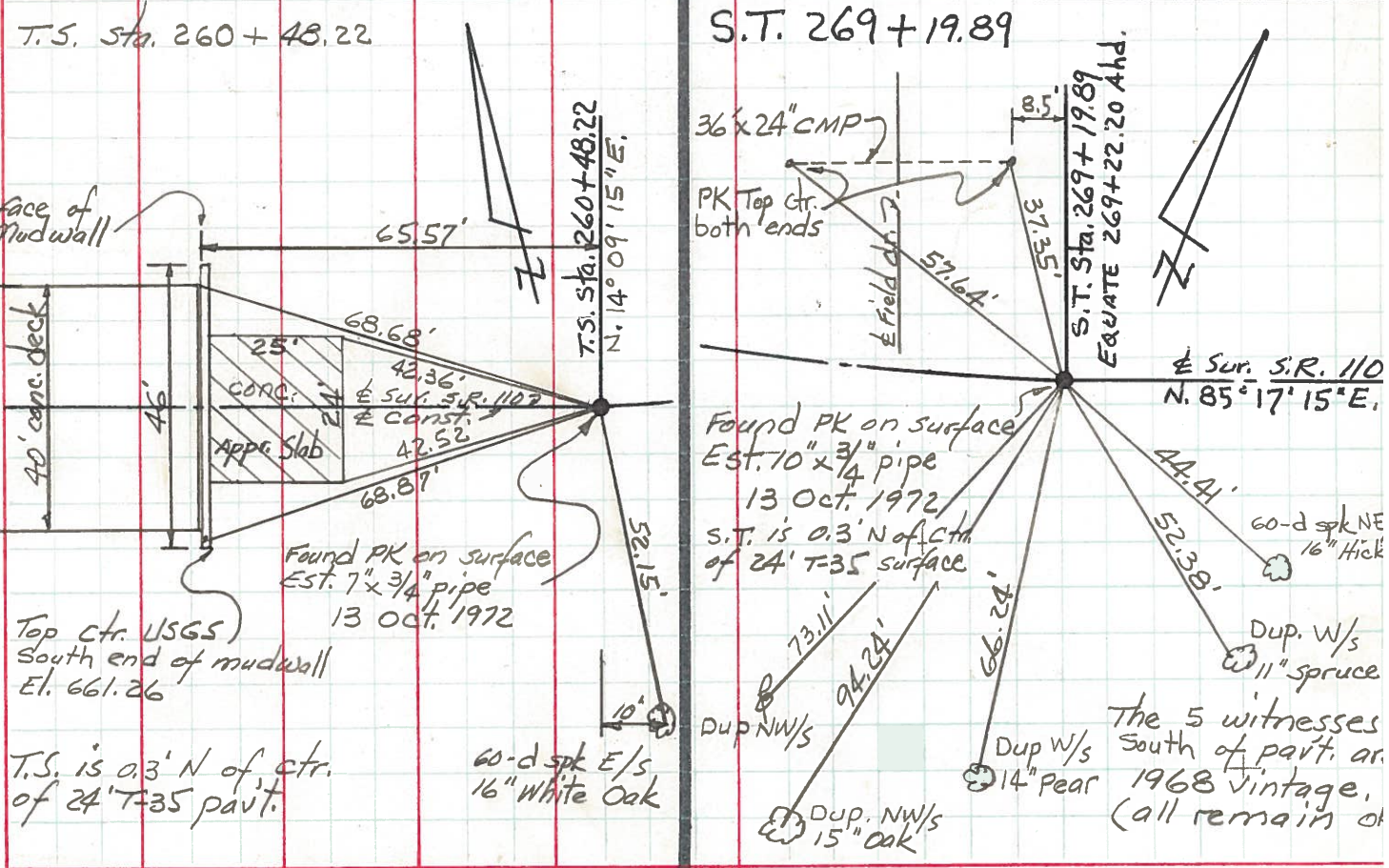
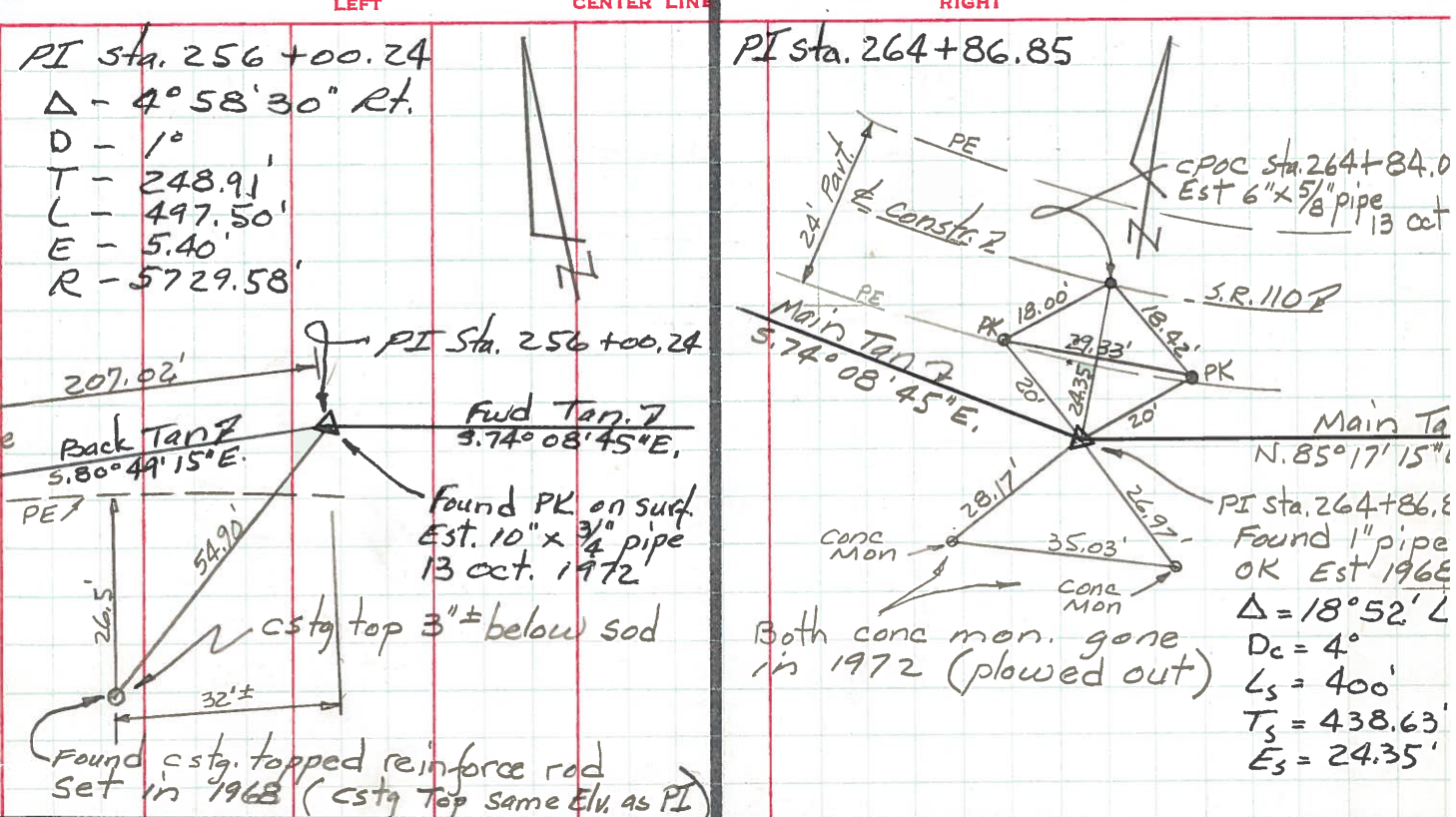
Red Beach
Newcomb
Knape

COUNTY HENRY DATE Oct 1972

S. R. 110 WEATHER

SEC. Harrison Twp TEMP.

DESCRIPTION CONTROL POINTS JOB NO.



PERSONNEL	TITLE	PERSONNEL	TITLE	COUNTY	DATE
Beach		Hoff		Henry	Dec. 1957
Armbruster	x	Harris		S. R.	110
Eutter		Ruchener		WEATHER	
Knappe		Delvanthal		SEC.	2.22
DESCRIPTION	Alignment sheet # 6			TEMP.	
	LEFT	CENTER LINE	RIGHT	JOB NO.	

