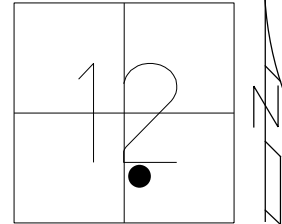


O.D.O.T. DISTRICT 2 SURVEY OFFICE (USE ONLY)

PERSONNEL _____ REFERENCE NO. 14 A SHEET 11 OF 56
 NOTES ASTON DATE 5/25/23 ROUTE SR 110
 H.C. AUBLE WEATHER WINDY COUNTY HENRY
 R.C. MILLER TEMP. 56° TOWNSHIP HARRISON
 DWG BY RHOADES PID PAVTRAIN SECTION 12
 T 5 N R 7 E

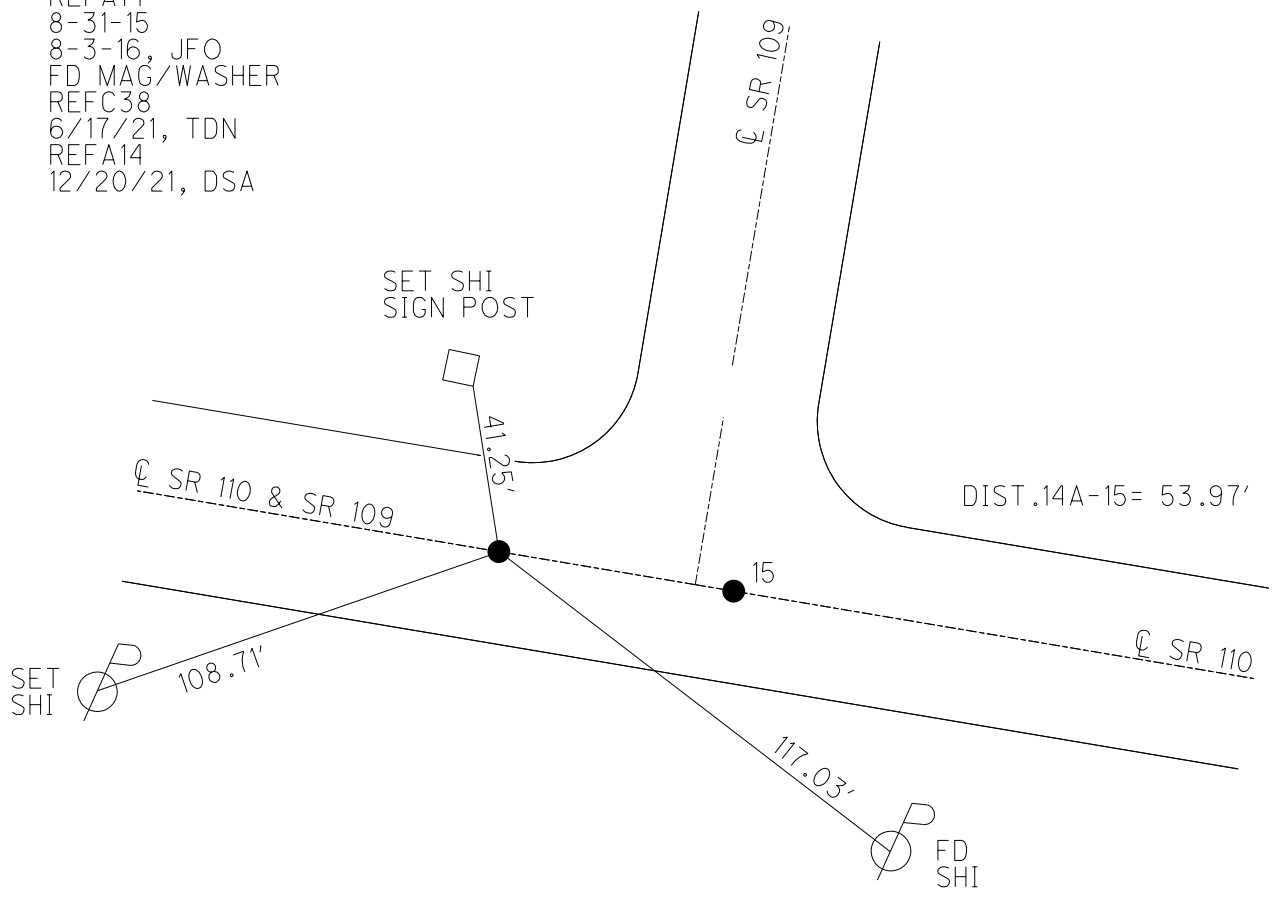
TYPE MONUMENT MAG/WASHER
 ON SURFACE - ~~BELOW~~ ON
 OFFSET \odot PAVEMENT ON _____ LT : RT
8.6' TO RT EDGE PAVEMENT
 STATION: 352+90.18



HORIZ.DATUM: NAD83 2011 GEOID: NAVD88 2018
 GRID: NORTHING: 636940.720 EASTING: 1554366.550

RECORD: P.I.
 $\Delta = 0^{\circ} 08' RT$
 STA. 359+87.00
 SET P.K./WASHER
 10-11-90, MB
 FD P.K./WASHER
 REFA14
 8-31-15
 8-3-16, JFO
 FD MAG/WASHER
 REFC38
 6/17/21, TDN
 REFA14
 12/20/21, DSA

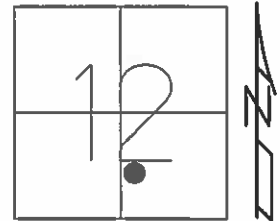
NOTE: REF 38C SR 109



O.D.O.T. DISTRICT 2 SURVEY OFFICE (USE ONLY)

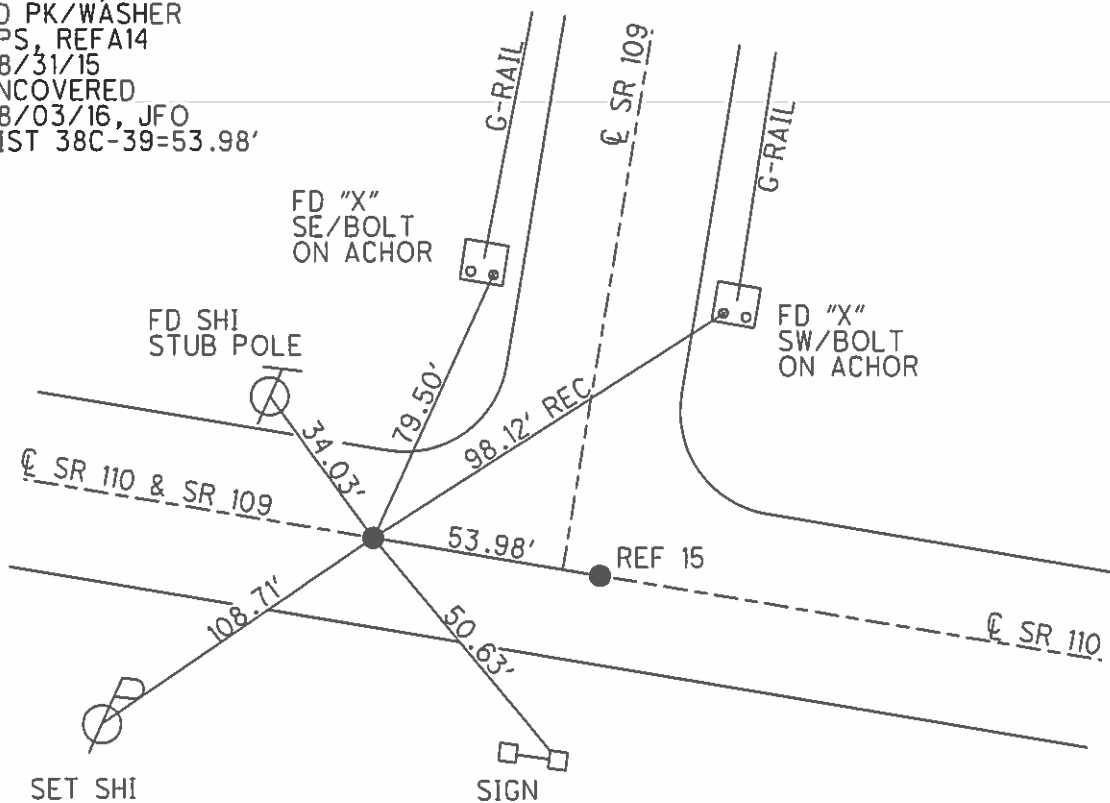
PERSONNEL _____ REFERENCE NO. 14 A SHEET 12 OF 58
 NOTES RHOADES DATE 08/31/15 ROUTE SR 110
 H.C. O'DONNELL WEATHER FAIR COUNTY HENRY
 R.C. RHOADES TEMP. 85° TOWNSHIP HARRISON
 SECTION 12
 T 5 N R 7 E

TYPE MONUMENT _____ PK/WASHER _____
 ON SURFACE - ~~BELOW~~ _____ ON _____
~~LEFT~~ - ☉ PAV'T - ~~RIGHT~~ _____ ON _____
8.6' TO RT EDGE PAVEMENT
 S.L.M. _____ 361+68



Grid: Northing: 636940.732 Easting: 1554366.545

RECORD: P.I.
 $\Delta=0^{\circ}08'RT$
 STA. 359+87.00
 SET PK/WASHER
 10/11/90, MB
 FD PK/WASHER
 GPS, REFA14
 08/31/15
 UNCOVERED
 08/03/16, JFO
 DIST 38C-39=53.98'



O.D.O.T. DISTRICT 2 SURVEY OFFICE

PERSONNEL

REFERENCE NO. # 15 SE 110 SHEET 33 OF SR 109

NOTES BARNHISEL

H.C. _____

DATE 9-28-90

ROUTE 109 & 110

R.G. HOFFMAN

WEATHER Clear

COUNTY HENRY

TEMP. +65°

TOWNSHIP HARRISON

SECTION 12

T5 N R 7 E

TYPE MONUMENT PK NAILS & Washers

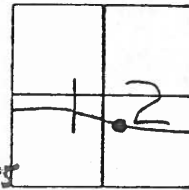
ON SURFACE - BELOW YES YES

LEFT - & PAV'T. - RIGHT YES YES

8.6
8.4 TO FT EDGE PAVEMENT

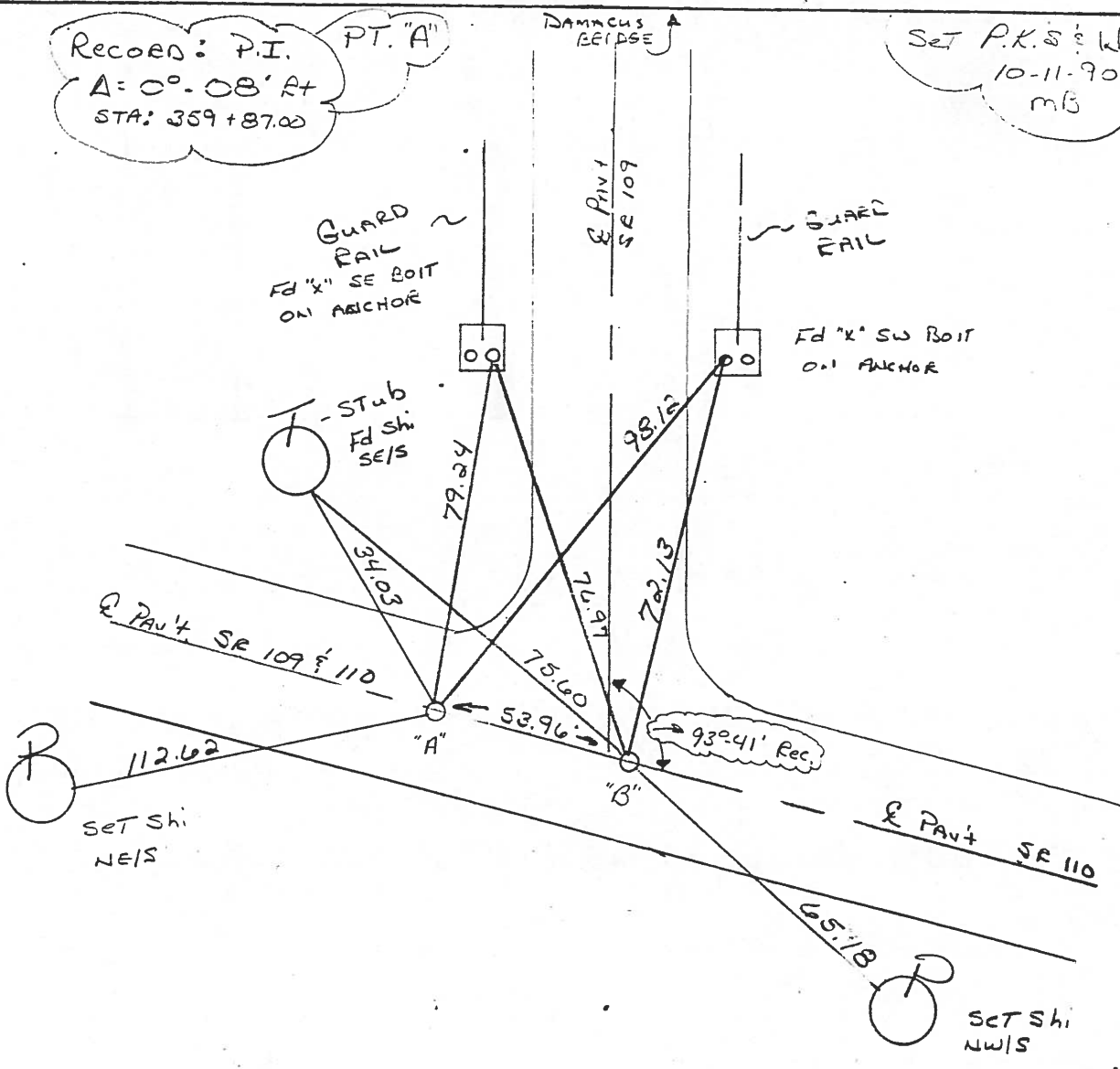
S.L.M. "A" 952+25 "B" 952+79

361+68/6.85



Record: P.I.
A: 0°-08' Rt
STA: 359+87.00

Set P.K.'s & Washers
10-11-90
mB



OD.O.T. DISTRICT 2 SURVEY OFFICE

SHEET _____ OF _____

County HENRY S.R. 109 & SR 110

Date 3-23-84

Township HARRISON

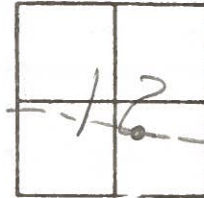
Weather Clear

Section 12

Temp. +25°

T5N, R2E

Personnel HOFFMAN



#15 SR 110 LOENRKE
 #39 SR 109 HOUSEHOLDER
BARNHISEL

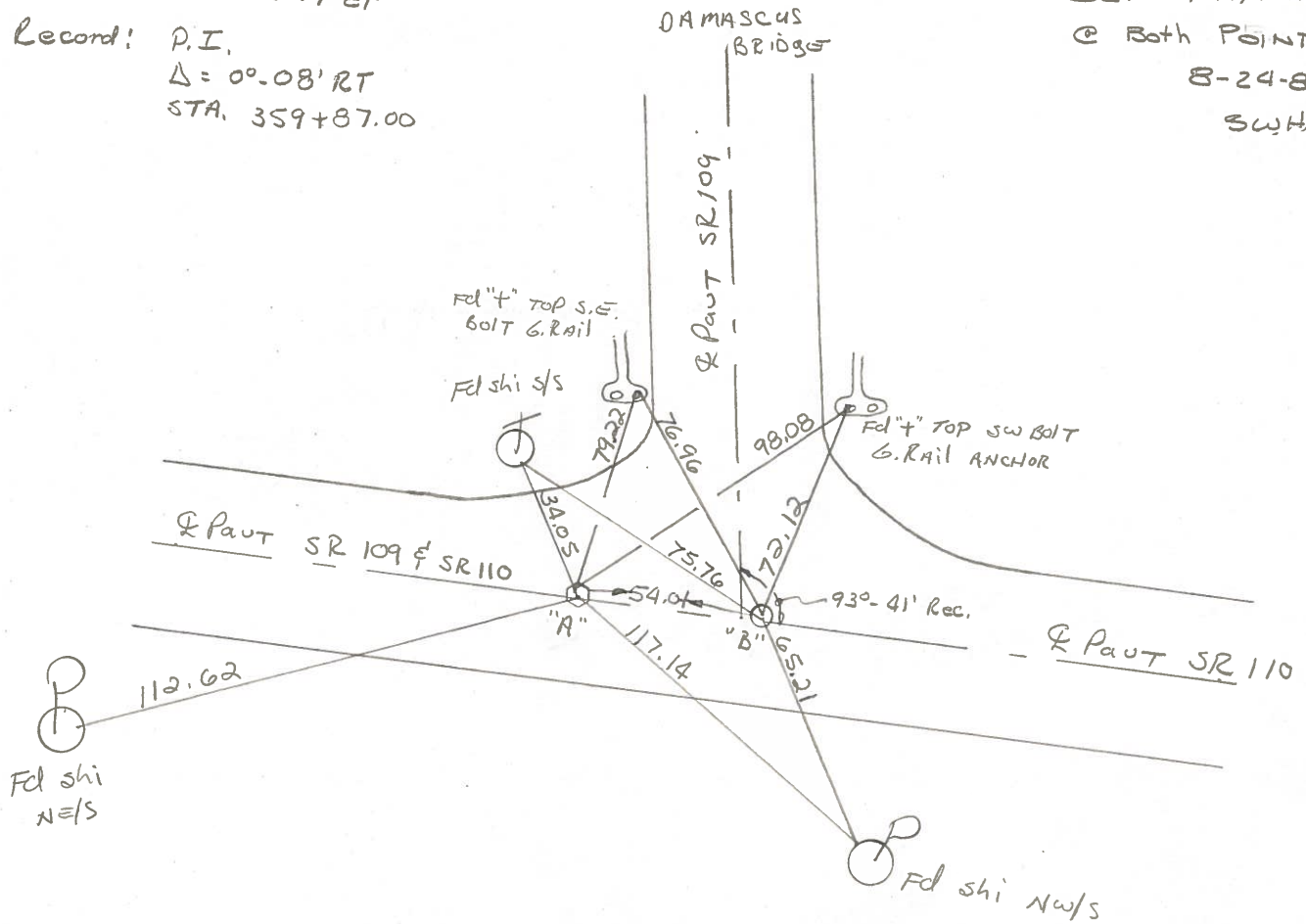
PT. "A" Fd small R.R. SPK 2" Below Surface
 ON E SR 109 & SR 110 PAUT
 11.0' TO RT EP
 15.5' TO LT EP

SLM 952 + 42

SET PK/WASHER
 @ Both POINTS
 8-24-84
 SWH

Record: P.I.
 $\Delta = 00.08' RT$
 STA. 359+87.00

DAMASCUS BRIDGE



PT. "B" Fd P.K. NAIL ON SURFACE
 & SURVEY SR 110 & ON
 & CONST SR 109 NORTH
 STA. 366+41.01 SR 110 =
 STA. 954+22.52 SR 109

SLM = 952 + 96
 ON & PAUT SR 110 EAST
 1.0' E. of & PAUT SR 109 NORTH

CONNECTION	TITLE	PERSONNEL	TITLE
SIDE			
EPS			
FD			

COUNTY HENRY DATE 8-7-74

S. R. 109 WEATHER CLEAR

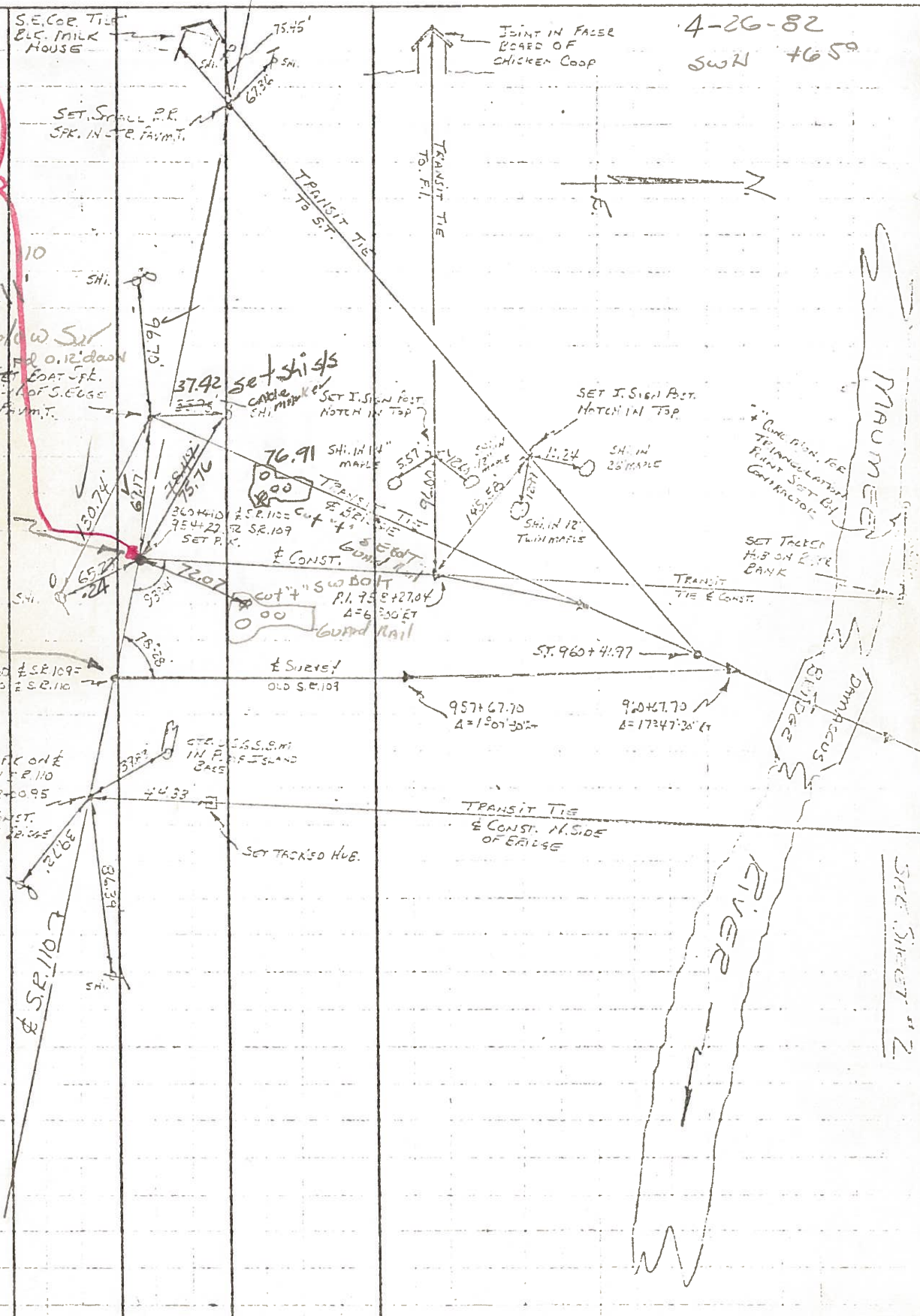
SEC. 18.30 DAMASCUS Pt. TEMP. +85°

DESCRIPTION \$ CONTROL TIES (NEW CONSTRUCTION) JOB NO. 4-26-82 SWN +65°

set small
P.R. S.P.K.
5-19-82
S.W.N.
S.P. to S.E.P.
N.K. PAINT SET 10
P.K. NAIL below S.P.
1.00 W
1.05 N

REF. & CONST

No NEED TO REF.



MAUMEE RIVER
BRIDGE
DAMASCUS

SEE SHEET 12