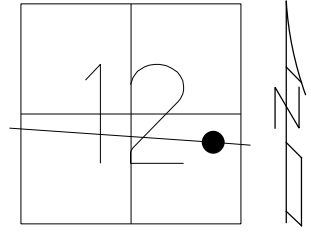


O.D.O.T. DISTRICT 2 SURVEY OFFICE (USE ONLY)

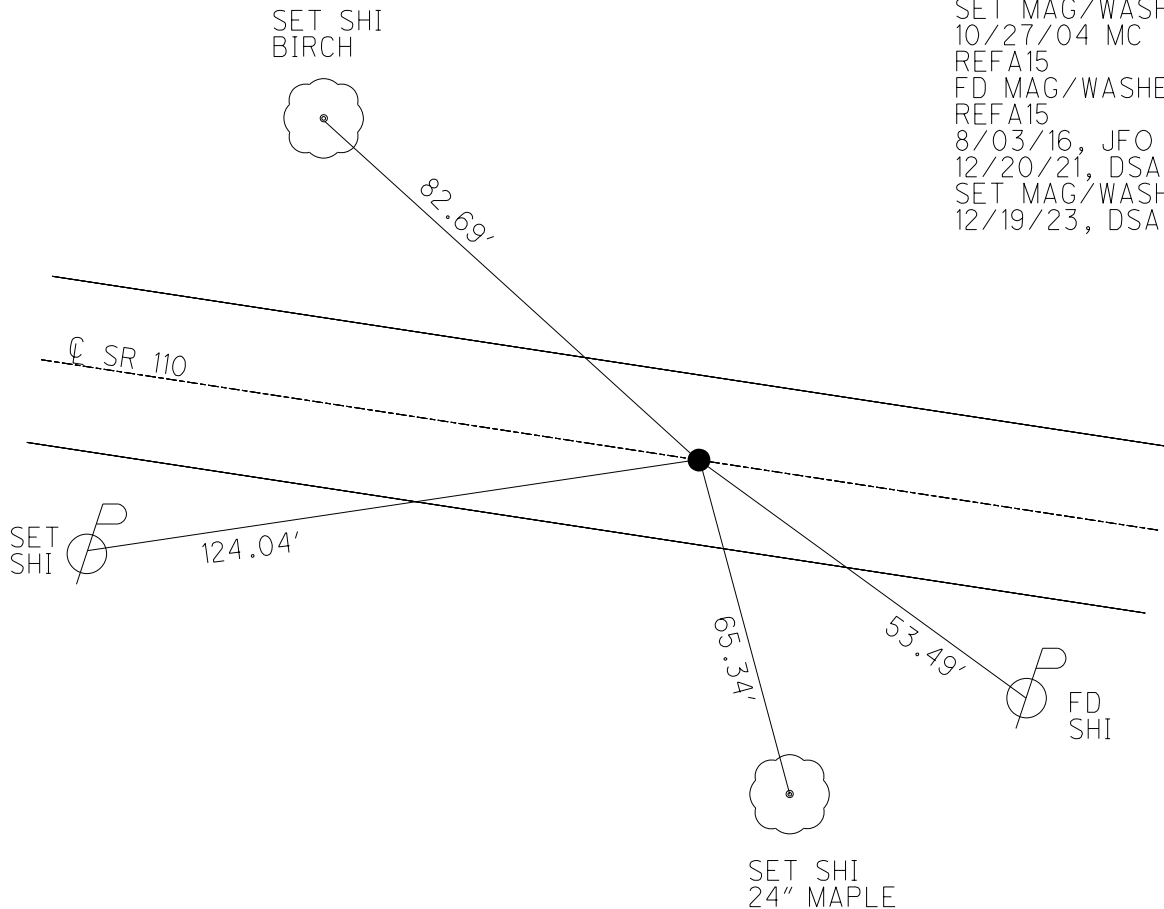
PERSONNEL	REFERENCE NO. <u>15 A</u>	SHEET <u>13</u> OF <u>61</u>
NOTES <u>MILLER</u>	DATE <u>12/19/23</u>	ROUTE <u>SR 110</u>
H.C. <u>AUBLE</u>	WEATHER <u>CLOUDY</u>	COUNTY <u>HENRY</u>
R.C. <u>RHOADES</u>	TEMP. <u>27°</u>	TOWNSHIP <u>HARRISON</u>
<u>ASTON</u>		SECTION <u>12</u>
DWG BY <u>RHOADES</u>	PID <u>114846</u>	T <u>5</u> N R <u>7</u> E

TYPE MONUMENT MAG/WASHER  
 ON SURFACE - ~~BELOW~~ ON  
 OFFSET ☉ PAVEMENT ON LT : RT  
8.6' TO RT EDGE PAVEMENT  
 STATION: 368+97.72



HORZ. DATUM: NAD83 2011 GEOID: NAVD88 2018  
 GRID: NORTHING: 636587.995 EASTING: 1555934.937

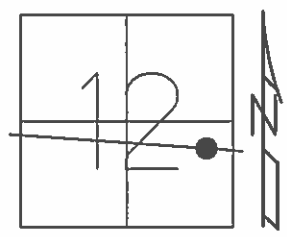
RECORD: P.I.  
 STA: 375+95.2  
 $\Delta = 0^\circ 50' \text{ LT}$   
 1940 PLAN  
 SET MAG/WASHER  
 10/27/04 MC  
 REFA15  
 FD MAG/WASHER  
 REFA15  
 8/03/16, JFO  
 12/20/21, DSA  
 SET MAG/WASHER  
 12/19/23, DSA



O.D.O.T. DISTRICT 2 SURVEY OFFICE (USE ONLY)

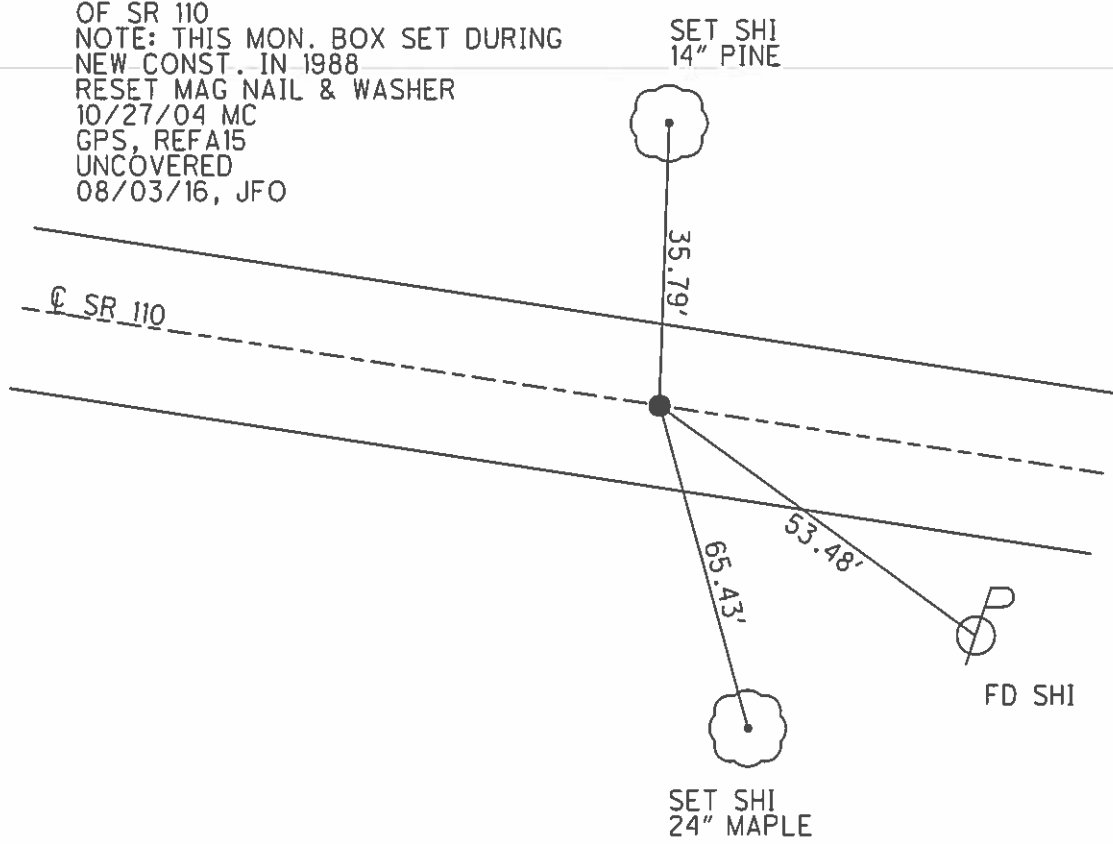
PERSONNEL	REFERENCE NO.	15-A	SHEET	14	OF	58
NOTES	RHOADES	DATE	08/31/15	ROUTE	SR 110	
H.C.	O'DONNELL	WEATHER	FAIR	COUNTY	HENRY	
R.C.	RHOADES	TEMP.	85°	TOWNSHIP	HARRISON	
				SECTION	12	
				T	5	N
				R	7	E

TYPE MONUMENT PK/WASHER  
 ON SURFACE - ~~BELOW~~ ON  
~~LEFT~~ - Q PAV'T - ~~RIGHT~~ ON  
8.6' TO RT EDGE PAVEMENT  
 S.L.M. 377+20



Grid: Northing: 636587.917 Easting: 1555934.978

ORIGINAL POINT 1940 PLAN  
 RECORD:  
 PI STA: 375+95.2  
 DELTA= 0°-50' LT  
 NOTE: 384+87 IS THE BEGINNING  
 OF NEW PAV'T & NEW ALIGNMENT  
 OF SR 110  
 NOTE: THIS MON. BOX SET DURING  
 NEW CONST. IN 1988  
 RESET MAG NAIL & WASHER  
 10/27/04 MC  
 GPS, REFA15  
 UNCOVERED  
 08/03/16, JFO



O.D.O.T. DISTRICT 2 SURVEY OFFICE

PERSONNEL

REFERENCE NO. <sup>1988</sup> 154

SHEET 1 OF 37

NOTES BARNHISEL

DATE 04/13/04

ROUTE 110

H.C. CANTERBURY

WEATHER CLEAR

COUNTY HENRY

R.C. HOOKER

TEMP. +75°

TOWNSHIP HARRISON

SECTION 12

T 5 N R 7 E

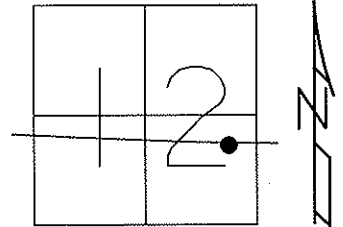
TYPE MONUMENT PK & WASHER

ON SURFACE - ~~BELOW~~ YES

~~LEFT - C~~ PAV'T - ~~RIGHT~~ YES

8.6' TO RT EDGE PAVEMENT

S.L.M. 377+20

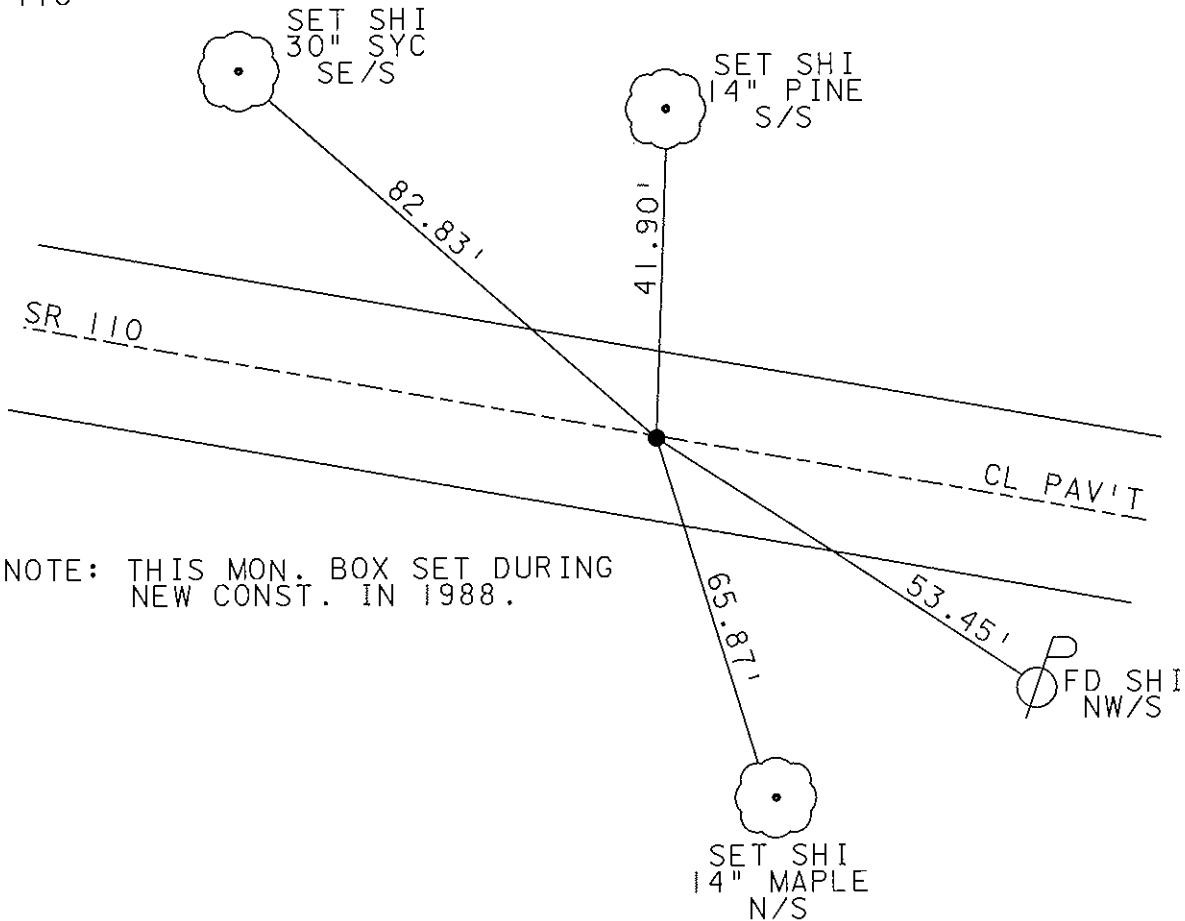


ORIGINAL POINT 1940 PLAN

RECORD:  
PI STA: 375+95.2  
DELTA= 0°-50' LT

RESET MAG NAIL & WASHER  
10/27/04  
MC

NOTE: 384+87 IS THE BEGINNING  
OF NEW PAV'T & NEW ALIGNMENT  
OF SR 110



NOTE: THIS MON. BOX SET DURING  
NEW CONST. IN 1988.

Resurfaced 2009

### O.D.O.T. DISTRICT 2 SURVEY OFFICE

PERSONNEL \_\_\_\_\_

REFERENCE NO. 15A

SHEET \_\_\_\_\_ OF \_\_\_\_\_

NOTES BARNHISEL

H.C. \_\_\_\_\_

DATE 9-28-90

ROUTE 110

R.C. HOFFMAN

WEATHER Clear

COUNTY HENRY

TEMP. +65°

TOWNSHIP HARRISON

SECTION 12

T 5 N R 7 E

TYPE MONUMENT P.K. & Washer

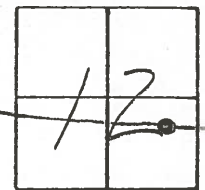
ON SURFACE - ~~BELOW~~ yes

LEFT - & PAV'T. - RIGHT 0.8

8.6 TO Rt EDGE PAVEMENT 10.9 To Lt Edge

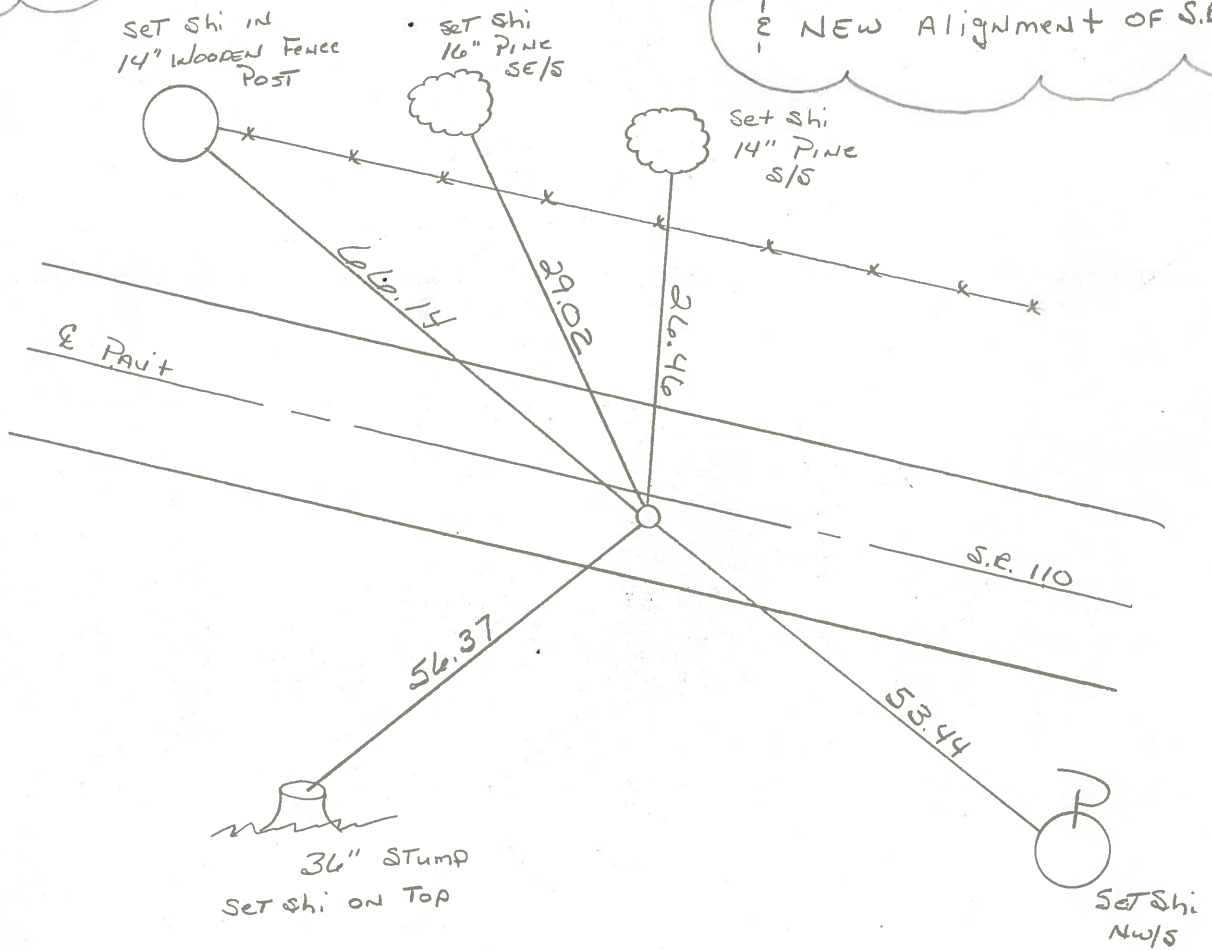
S.L.M. 377+20

Set P.K. & Washer  
10-11-90  
MB



Recoed:  
P.I. STA: 375+95.2  
Set Sm RR Spk  
Δ = 0°-50' LT

NOTE: 384+87 IS THE  
BEGINNING OF NEW PAUT  
& NEW ALIGNMENT OF S.E. 110



County HENRY S.R. 110

Date 5-19-82

Township HARRISON

Weather \_\_\_\_\_

Section 12

Temp. \_\_\_\_\_

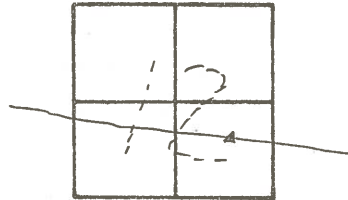
T5N, R7E

Personnel HOFFMAN

LOEHRKE

HOUSEHOLDER

15A



P.I. STA. 375+95.2  
SET SMALL P.R. SPK.  
A = 0°-50' LT.

OLD ALIGNMENT S.R. 110

SET P.K. & WASHER  
5-19-82  
S.W.H.

