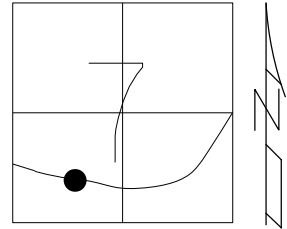


O.D.O.T. DISTRICT 2 SURVEY OFFICE (USE ONLY)

PERSONNEL \_\_\_\_\_ REFERENCE NO. 16 C SHEET 19 OF 61  
 NOTES NIESE DATE 3/25/24 ROUTE SR 110  
 H.C. MILLER WEATHER CLOUDY COUNTY HENRY  
 R.C. RHOADES TEMP. 45° TOWNSHIP DAMASCUS  
 SECTION 7  
 DWG BY RHOADES PID 114846 T 5 N R 8 E

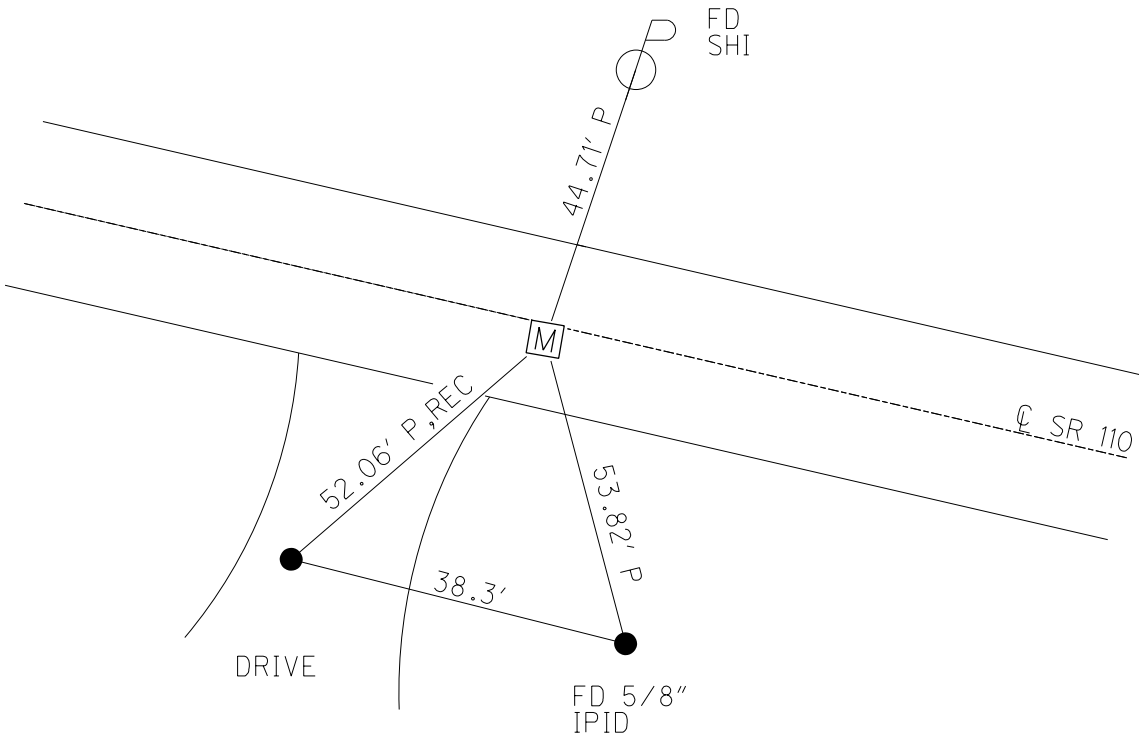
TYPE MONUMENT MONBOX W/1" IPIN  
 ON SURFACE - ~~BELOW~~ ON  
 OFFSET  $\varnothing$  PAVEMENT ON LT : RT  
11.1' TO RT EDGE PAVEMENT  
 STATION: 395+95.62



HORZ. DATUM: NAD83 2011 GEOID: NAVD88 2018  
 GRID: NORTHING: 635635.045 EASTING: 1558427.107

RECORD: C.S.  
 FD MONBOX  
 MONREFC16  
 9/01/15, JFO  
 FD MONBOX  
 W/ 1" IPIN  
 REFC16  
 12/21/21, DSA  
 CKREFC16  
 3/25/24, JAM

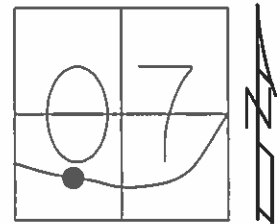
HEN LPD  
 N: 492499.275  
 E: 192892.810



O.D.O.T. DISTRICT 2 SURVEY OFFICE (USE ONLY)

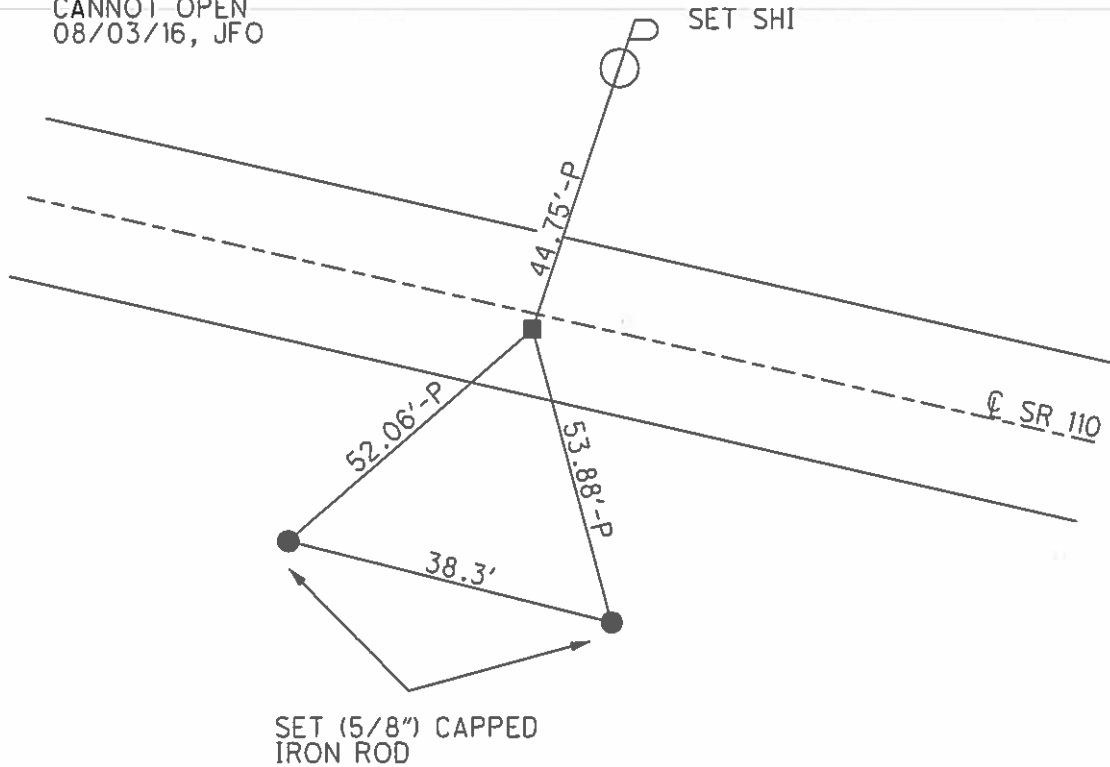
PERSONNEL \_\_\_\_\_ REFERENCE NO. 16C SHEET 20 OF 58  
 NOTES BARNHISEL DATE 09/15/04 ROUTE SR 110  
 H.C. CANTERBURY WEATHER CLEAR COUNTY HENRY  
 R.C. HOOVER TEMP. 75° TOWNSHIP DAMASCUS  
 \_\_\_\_\_ SECTION 07  
 \_\_\_\_\_ T 5 N R 8 E

TYPE MONUMENT MON. BOX W/IRON PIN  
 ON SURFACE - ~~BELOW~~ ON  
~~LEFT - C PAV'T~~ - RIGHT 1.0'  
11.1' TO RT EDGE PAVEMENT  
 S.L.M. 404+17



Grid: Northing: 635635.122 Easting: 1558427.109

RECORD: SC. PLAN  
 STA: 402+93.62  
 NOTE: THIS MON. BOX  
 SET DURING NEW  
 CONST. IN 1988  
 GPS, MONREFC16  
 09/01/15, JFO  
 FD MON BOX  
 CANNOT OPEN  
 08/03/16, JFO



O.D.O.T. DISTRICT 2 SURVEY OFFICE

PERSONNEL \_\_\_\_\_

REFERENCE NO. 16C<sup>1988</sup>

SHEET 5 OF 37

NOTES BARNHISEL

DATE 09/15/04

ROUTE S.R. 110

H.C. CANTERBURY

WEATHER CLEAR

COUNTY HENRY

R.C. HOOKER

TEMP. +75°

TOWNSHIP DAMASCUS

SECTION 07

T 5 N R 8 E

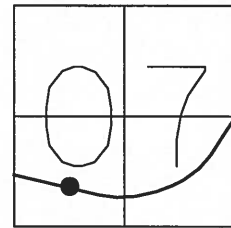
TYPE MONUMENT MON BOX W/IRON PIN

ON SURFACE - ~~BELOW~~ YES

~~LEFT~~ - Q PAV'T - RIGHT 1.0'

11.1' TO RT. EDGE PAVEMENT

S.L.M. 404+17



RECORD: SC.  
PLAN STA: 402+93.62

NOTE: THIS MON. BOX SET DURING  
NEW CONST. IN 1988.

