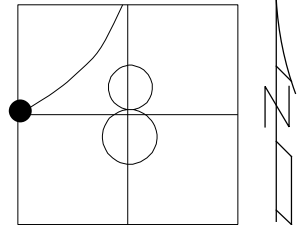


O.D.O.T. DISTRICT 2 SURVEY OFFICE (USE ONLY)

PERSONNEL _____ REFERENCE NO. 17 GA SHEET 33 OF 61
 NOTES NIESE DATE 3/25/24 ROUTE SR 110
 H.C. MILLER WEATHER CLEAR COUNTY HENRY
 R.C. RHOADES TEMP. 60° TOWNSHIP DAMASCUS
 SECTION 8
 DWG BY RHOADES PID 114846 T 5 N R 8 E

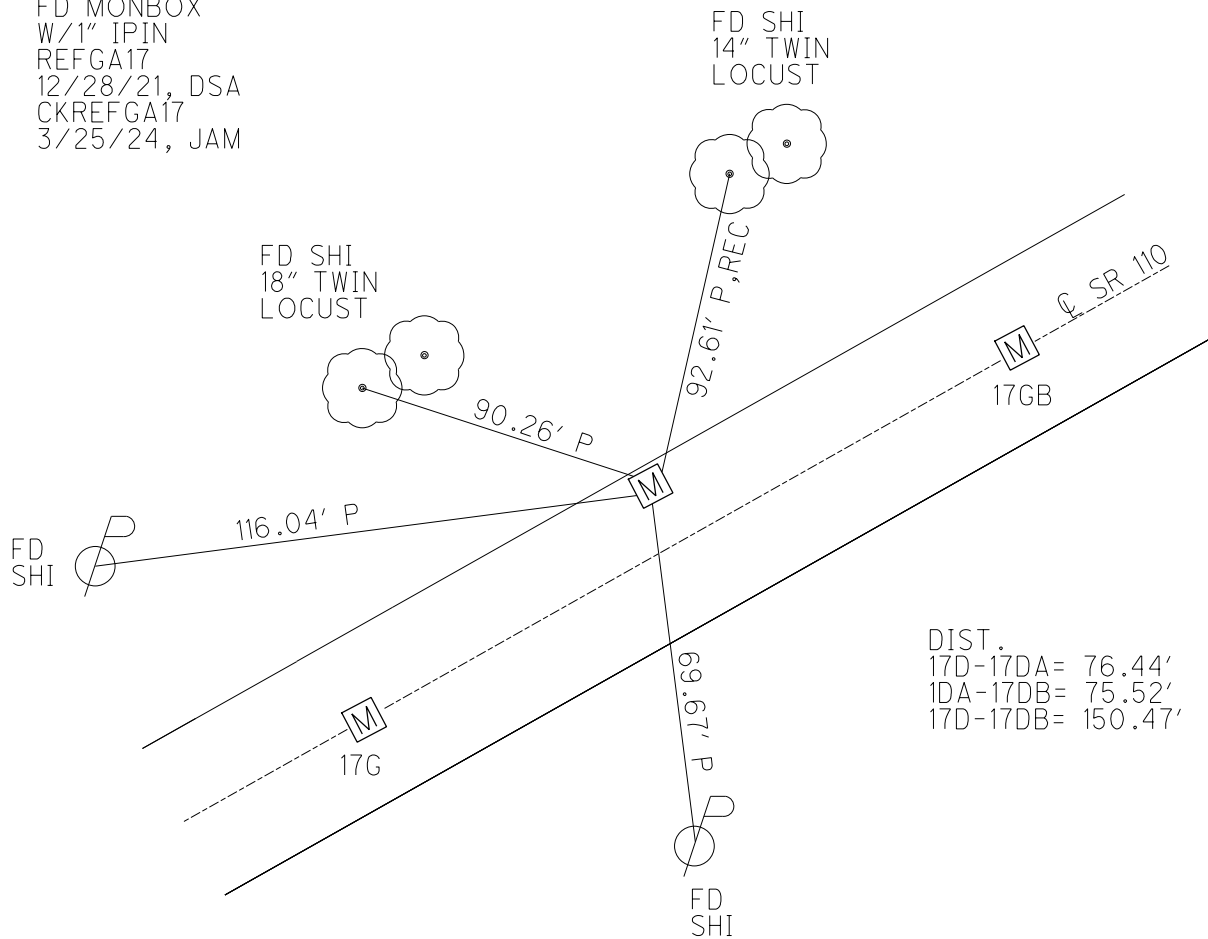
TYPE MONUMENT MONBOX W/1" IPIN
 ON SURFACE - ~~BELOW~~ ON
 OFFSET ☉ PAVEMENT 9.5' LT : ~~RT~~
1.4' TO LT EDGE PAVEMENT
 STATION: 443+81.70



HORZ. DATUM: NAD83 2011 GEOID: NAVD88 2018
 GRID: NORTHING: 637557.675 EASTING: 1562412.158

RECORD: P.I.
 FD MONBOX
 MONREFGA17
 9/01/15, JFO
 FD MONBOX
 W/1" IPIN
 REFGA17
 12/28/21, DSA
 CKREFGA17
 3/25/24, JAM

HEN LPD
 N: 494494.863
 E: 196842.186



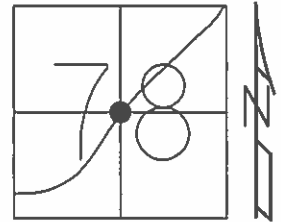
DIST.
 17D-17DA= 76.44'
 1DA-17DB= 75.52'
 17D-17DB= 150.47'

O.D.O.T. DISTRICT 2 SURVEY OFFICE (USE ONLY)

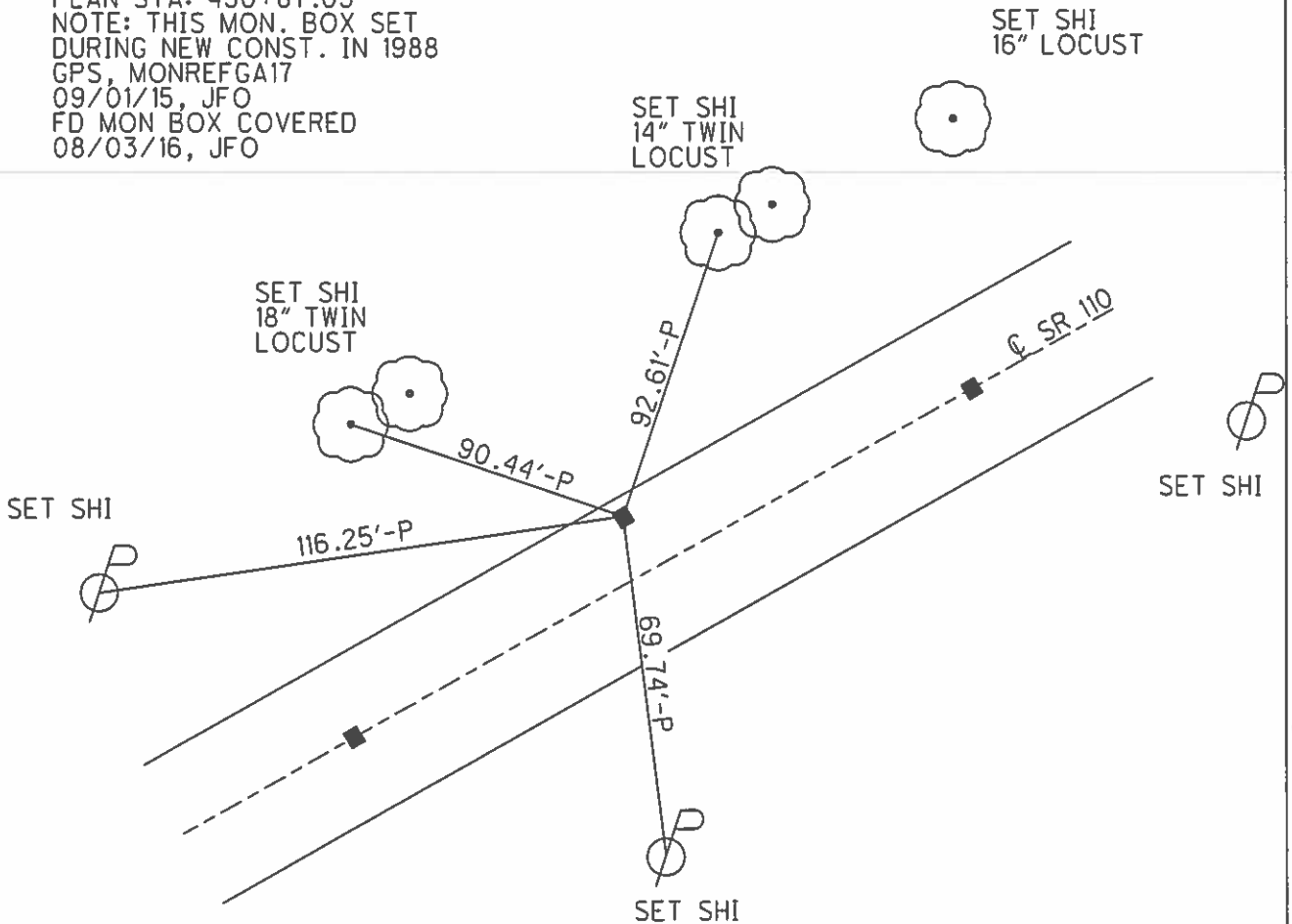
PERSONNEL _____ REFERENCE NO. 17GA SHEET 34 OF 58

NOTES BARNHISEL DATE 09/20/04 ROUTE SR 110
 H.C. CANTERBURY WEATHER CLEAR COUNTY HENRY
 R.C. BARNHISEL TEMP. 65° TOWNSHIP DAMASCUS
 SECTION 07
T 5 N R 8 E

TYPE MONUMENT MON. BOX W/IRON PIN
 ON SURFACE - ~~BELOW~~ ON
 LEFT - ~~C PAV'T~~ - ~~RIGHT~~ 9.5'
1.4' TO LT. EDGE PAVEMENT
 S.L.M. 452+03
 Grid: Northing: 637557.680 Easting: 1562412.219



RECORD: PI/SEC 07
 PLAN STA: 450+87.05
 NOTE: THIS MON. BOX SET
 DURING NEW CONST. IN 1988
 GPS, MONREFGA17
 09/01/15, JFO
 FD MON BOX COVERED
 08/03/16, JFO



O.D.O.T. DISTRICT 2 SURVEY OFFICE

PERSONNEL

REFERENCE NO. ¹⁹⁸⁸ 176

SHEET 18 OF 37

NOTES BARNHISEL
 H.C. CANTERBURY
 R.C. BARNHISEL

DATE 09/20/04
 WEATHER CLEAR
 TEMP. +65°

ROUTE S.R. 110
 COUNTY HENRY
 TOWNSHIP DAMASCUS
 SECTION 07/08
T 5 N R 8 E

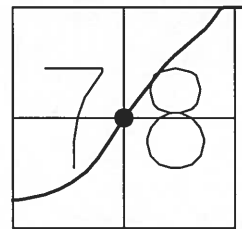
TYPE MONUMENT MON BOX W/IRON PINS
 ON SURFACE - ~~BELOW~~ YES

LEFT - Q PAV'T - ~~RIGHT~~ YES/9.5'LT/YES

TO LT EDGE PAVEMENT

S.L.M. 451+27 452+03 452+78

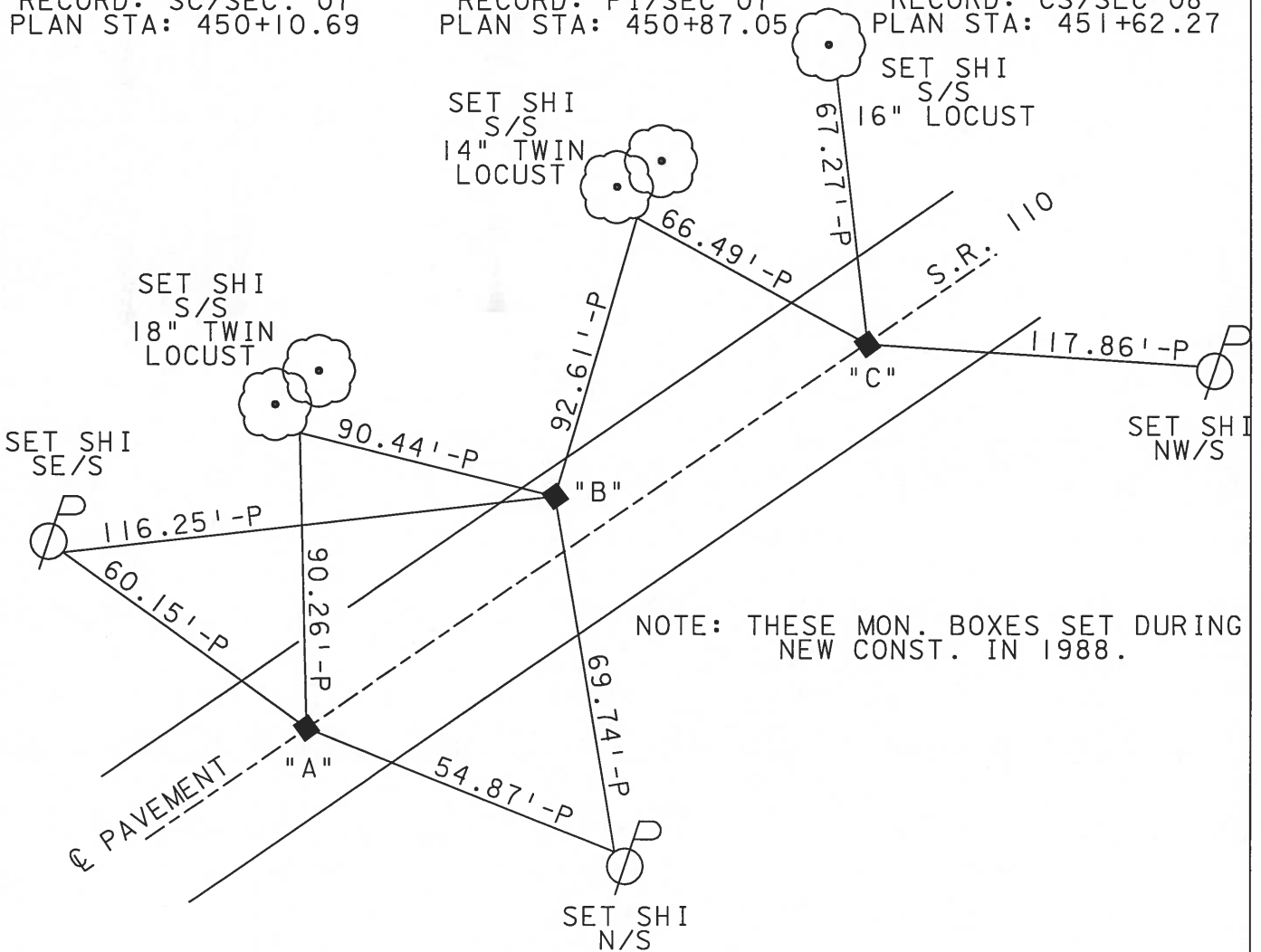
A=10.6
 B=1.4
 C=10.5



"A"
 RECORD: SC/SEC. 07
 PLAN STA: 450+10.69

"B"
 RECORD: PI/SEC 07
 PLAN STA: 450+87.05

"C"
 RECORD: CS/SEC 08
 PLAN STA: 451+62.27



NOTE: THESE MON. BOXES SET DURING
 NEW CONST. IN 1988.