

O.D.O.T. DISTRICT 2 SURVEY OFFICE (USE ONLY)

PERSONNEL

REFERENCE NO. 18 F

SHEET 45 OF 61

NOTES NIESE DATE 3/27/24  
 H.C. MILLER WEATHER WINDY  
 R.C. RHOADES TEMP. 25°

ROUTE SR 110  
 COUNTY HENRY  
 TOWNSHIP DAMASCUS  
 SECTION 8  
 T 5 N R 8 E

DWG BY RHOADES PID 114846

TYPE MONUMENT MONBOX W/1" IPIN

ON SURFACE - ~~BELOW~~ ON

OFFSET  $\odot$  PAVEMENT ON LT : RT  
10.3' TO RT EDGE PAVEMENT

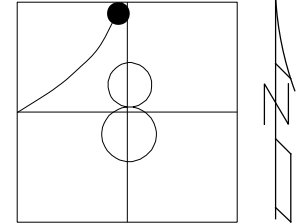
STATION: 471+57.31

HORZ. DATUM: NAD83 2011

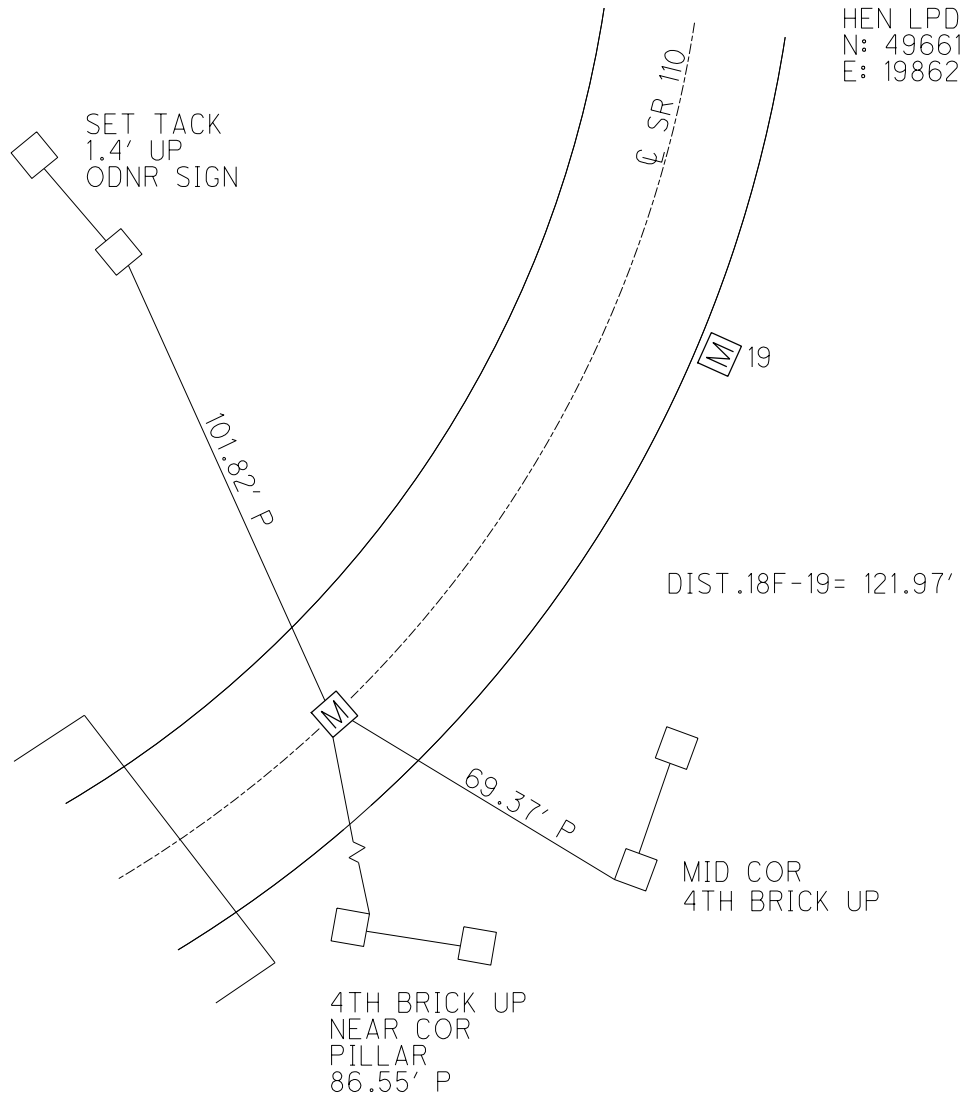
GEOID: NAVD88 2018

GRID: NORTHING: 639643.976

EASTING: 1564238.292



RECORD: P.C.  
 FD MONBOX  
 MONREFF18  
 9/01/15, JFO  
 FD MONBOX  
 W/1" IPIN  
 REFF18  
 12/29/21, DSA  
 CKREFF18  
 3/27/24, JAM

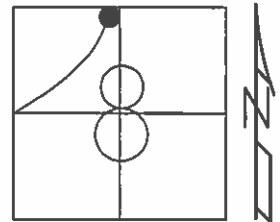


HEN LPD  
 N: 496614.532  
 E: 198629.842

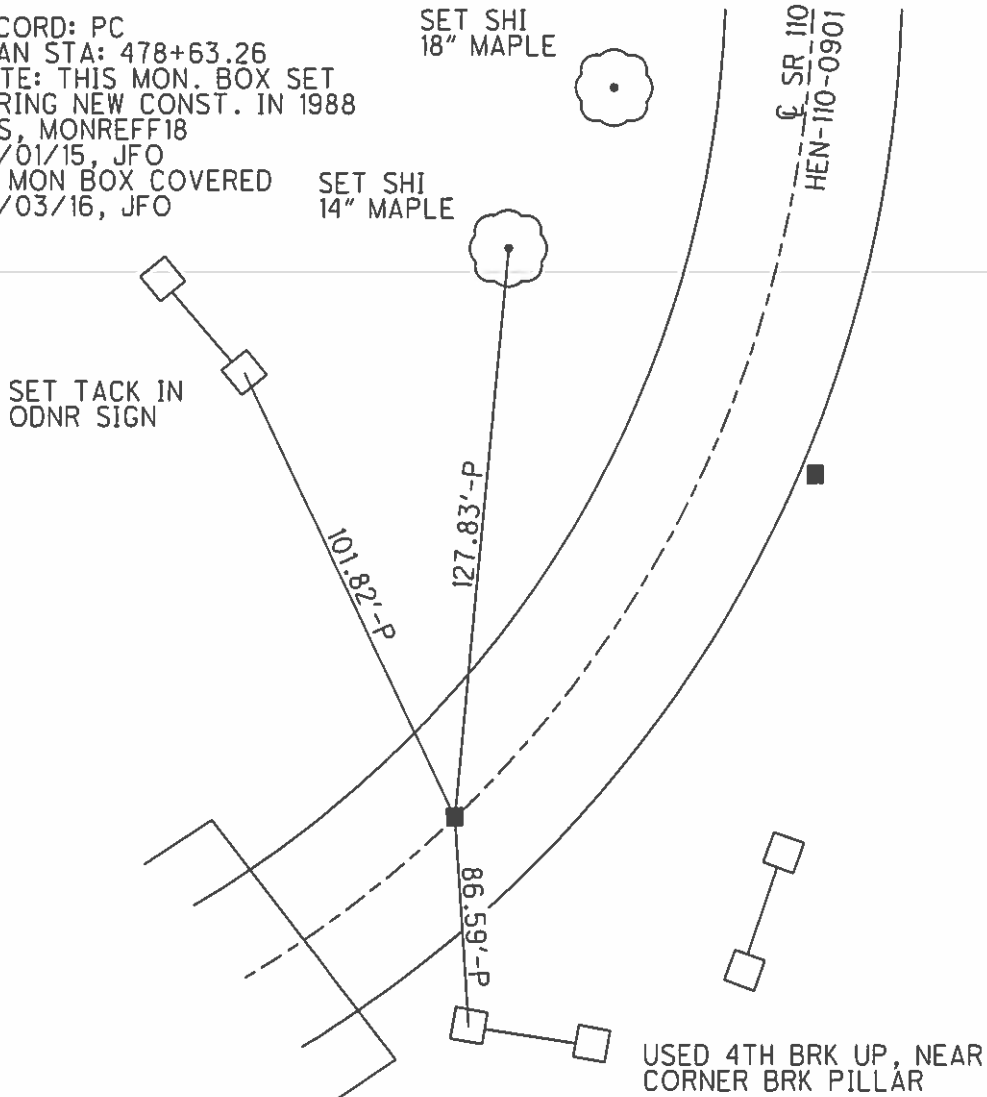
O.D.O.T. DISTRICT 2 SURVEY OFFICE (USE ONLY)

PERSONNEL	REFERENCE NO.	18F	SHEET	46	OF	58
NOTES	CANTERBURY	DATE	09/22/04	ROUTE	SR 110	
H.C.	CANTERBURY	WEATHER	CLEAR	COUNTY	HENRY	
R.C.	HOOVER	TEMP.	80°	TOWNSHIP	DAMASCUS	
				SECTION	08	
				T	5	N
				R	8	E

TYPE MONUMENT MON. BOX W/IRON PIN  
 ON SURFACE - ~~BELOW~~ ON  
~~LEFT - C~~ PAV'T - ~~RIGHT~~ ON  
10.3' TO RT EDGE PAVEMENT  
 S.L.M. 479+79  
 Grid: Northing: 639643.985 Easting: 1564238.287



RECORD: PC  
 PLAN STA: 478+63.26  
 NOTE: THIS MON. BOX SET  
 DURING NEW CONST. IN 1988  
 GPS, MONREFF18  
 09/01/15, JFO  
 FD MON BOX COVERED  
 08/03/16, JFO



O.D.O.T. DISTRICT 2 SURVEY OFFICE

PERSONNEL

REFERENCE NO. <sup>1988</sup> ~~18F~~

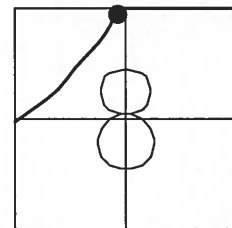
SHEET 27 OF 37

NOTES CANTERBURY  
 H.C. CANTERBURY  
 R.C. HOOKER

DATE 09/22/04  
 WEATHER CLEAR  
 TEMP. +80°

ROUTE S.R. 110  
 COUNTY HENRY  
 TOWNSHIP DAMASCUS  
 SECTION 8  
T 5 N R 8 E

TYPE MONUMENT MON BOX W/IRON PIN  
 ON SURFACE - ~~BELOW~~ YES  
~~LEFT~~ - Q PAV'T - RIGHT YES 11.4' RT  
11.4' RT OF RT EDGE PAVEMENT  
 S.L.M. "A" = 479+79 "B" = 481+00



A=10.3'  
 B=0.6'

"A"  
 RECORD: PC  
 PLAN STA: 478+63.26

"B"  
 RECORD: PI  
 1940 PLAN  
 DEF=25°-39' LT  
 D=8°-00'  
 R=716.20'  
 T=163.05'  
 E=18.32'  
 L=320.63'  
 PI=84+50.06  
 PC=82+87.01  
 PT=86+07.64

