

O.D.O.T. DISTRICT 2 SURVEY OFFICE (USE ONLY)

PERSONNEL

REFERENCE NO. 23 A

SHEET 59 OF 61

NOTES MILLER DATE 12/19/23  
 H.C. AUBLE WEATHER CLEAR  
 R.C. RHOADES TEMP. 27°  
ASTON

ROUTE SR 110  
 COUNTY HENRY  
 TOWNSHIP DAMASCUS  
 SECTION 9  
T 5 N R 8 E

DWG BY RHOADES PID 114846

TYPE MONUMENT MAG/WASHER

ON SURFACE - ~~BELOW~~ ON

OFFSET Q PAVEMENT 1.2' LT : ~~RT~~

8.3' TO LT EDGE PAVEMENT

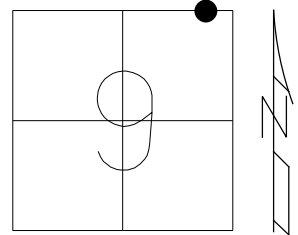
STATION: 555+64.33

HORZ. DATUM: NAD83 2011

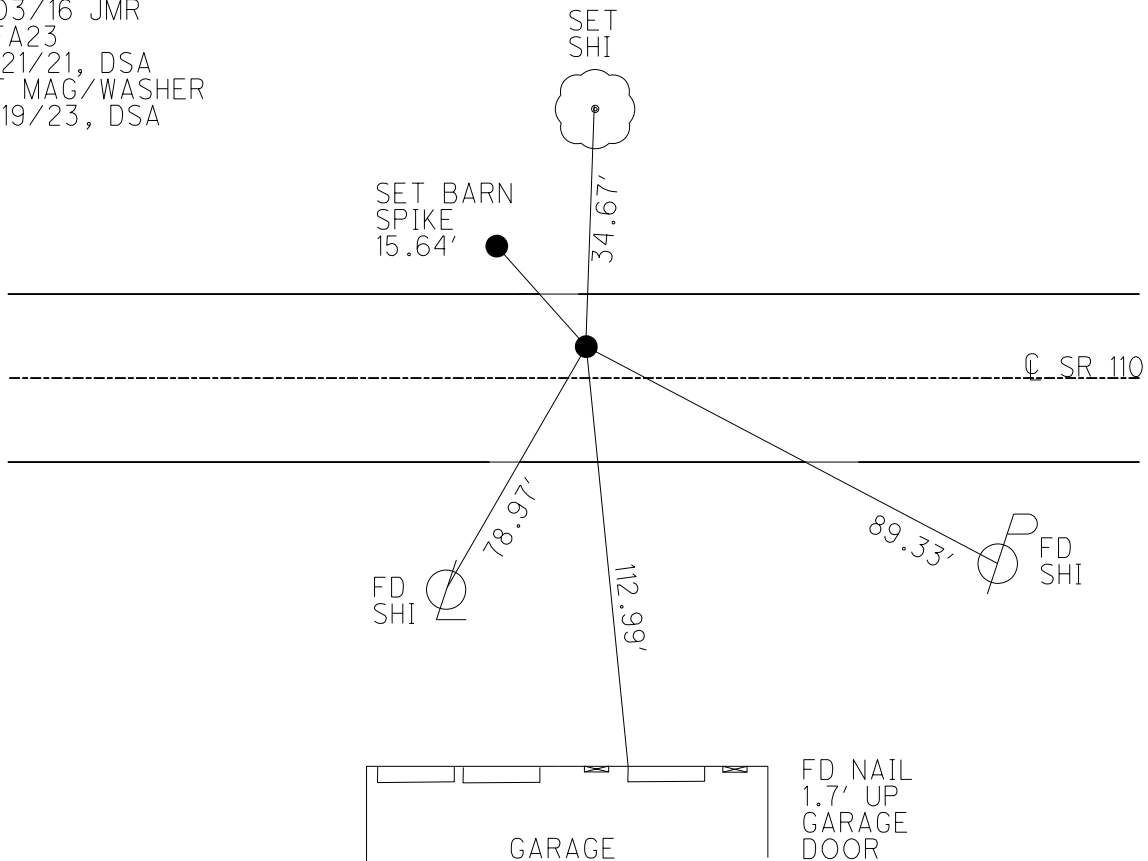
GEOID: NAVD88 2018

GRID: NORTHING: 640291.071

EASTING: 1572289.250



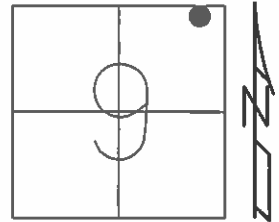
RECORD: PI  
 DEF= 2°-43' RT  
 Q PAV'T CONTROL  
 NOT ON SEC. LINE  
 SET MAG/WASHER  
 10/27/04, MC  
 FD MAG/WASHER  
 REFA23  
 9/01/15, JFO  
 8/03/16 JMR  
 REFA23  
 12/21/21, DSA  
 SET MAG/WASHER  
 12/19/23, DSA



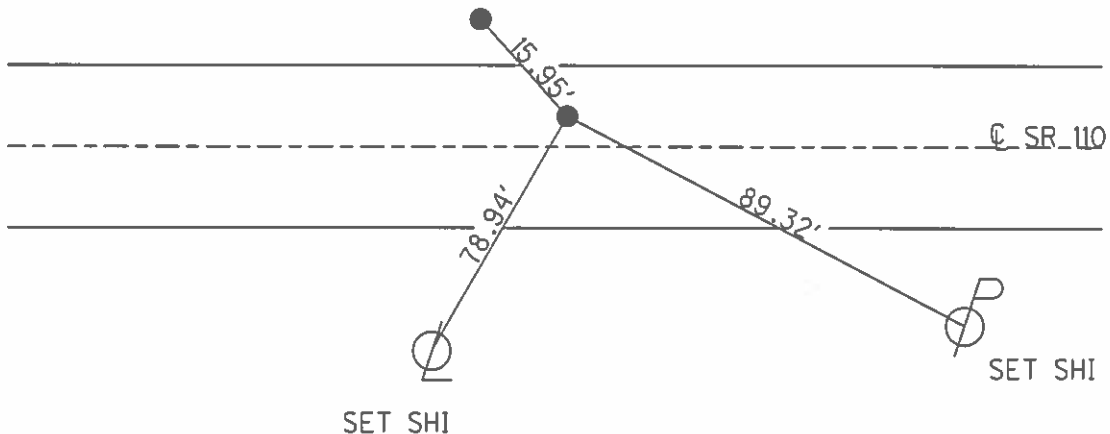
O.D.O.T. DISTRICT 2 SURVEY OFFICE (USE ONLY)

PERSONNEL	REFERENCE NO.	<u>23-A</u>	SHEET	<u>56</u>	OF	<u>58</u>
NOTES	<u>RHOADES</u>	DATE	<u>09/03/15</u>	ROUTE	<u>SR 110</u>	
H.C.	<u>O' DONNELL</u>	WEATHER	<u>CLEAR</u>	COUNTY	<u>HENRY</u>	
R.C.	<u>RHOADES</u>	TEMP.	<u>82°</u>	TOWNSHIP	<u>DAMASCUS</u>	
				SECTION	<u>9</u>	
				T	<u>5</u>	R
					<u>N</u>	<u>8</u>
					<u>E</u>	

TYPE MONUMENT PK & WASHER  
 ON SURFACE - ~~BELOW~~ ON  
 LEFT - ~~C PAV'T~~ - RIGHT 1.2'  
8.3' TO LT EDGE PAVEMENT  
 S.L.M. 563+86  
 Grid: Northing: 640291.071 Easting: 1572289.250



RECORD: PI  
 DEF.= 2°-43' RT  
 NOTE: REF TIES ON THIS PAGE  
 ARE CL PAV'T CONTROL ONLY/NOT  
 ON SEC. LINE  
 RESET FD MAG/WASHER  
 10/27/04 MC  
 GPS, REFA23  
 09/01/15, JFO  
 UNCOVERED  
 08/03/16 JMR



O.D.O.T. DISTRICT 2 SURVEY OFFICE

PERSONNEL

REFERENCE NO. 23-A

SHEET 36 OF 37

NOTES BARNHISEL

DATE 09/15/04

ROUTE S.R. 110

H.C. CANTERBURY

WEATHER CLEAR

COUNTY HENRY

R.C. HOOKER

TEMP. +80°

TOWNSHIP DAMASCUS

SECTION 9

T 5 N R 8 E

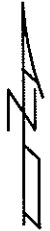
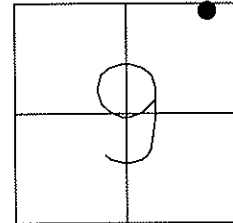
TYPE MONUMENT PK & WASHER

ON SURFACE ~~-BELOW~~ YES

LEFT - Q PAV'T - ~~RIGHT~~ 1.2'

8.3' TO LT. EDGE PAVEMENT

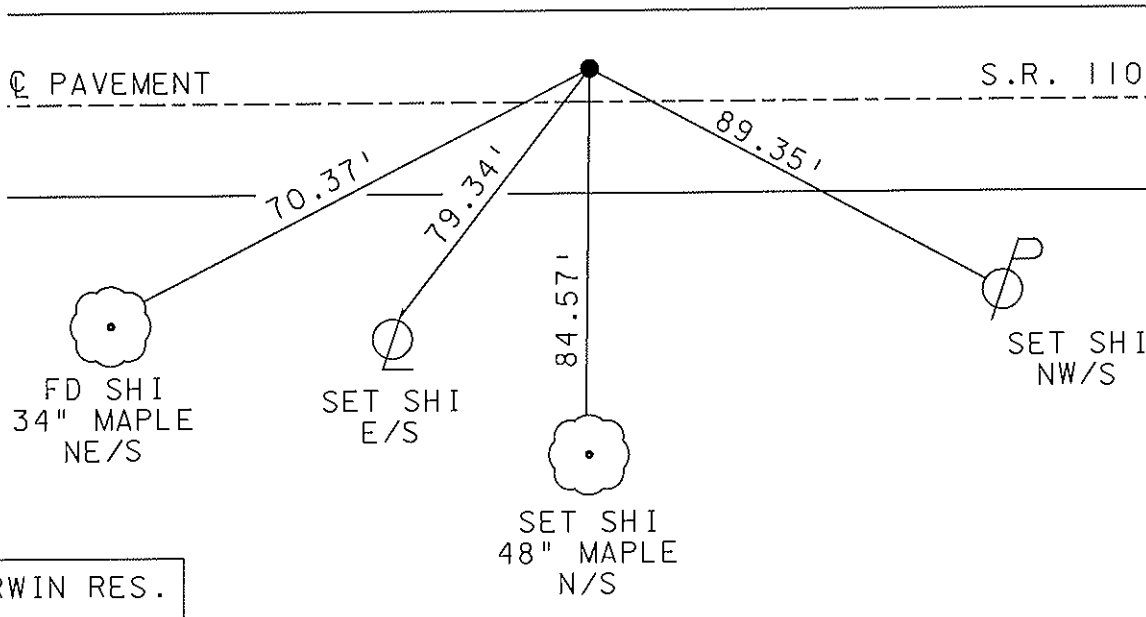
S.L.M. 563+86



RECORD: PI  
DEF. = 2°-43' RT

RESET MAG & WASHER  
10/27/04  
MC

NOTE: REF TIES ON THIS PAGE  
ARE CL PAV'T CONTROL ONLY/NOT  
ON SEC. LINE



# O.D.O.T. DISTRICT 2 SURVEY OFFICE

PERSONNEL \_\_\_\_\_

REFERENCE NO. 23-A

SHEET \_\_\_\_\_ OF \_\_\_\_\_

NOTES BAENITSEL

H.C. \_\_\_\_\_

R.C. HOFFMAN

DATE 9-25-90

WEATHER clear-windy

TEMP. +65°

ROUTE 110

COUNTY HENRY

TOWNSHIP DAMASCUS

SECTION 9

T 5 N R 8 E

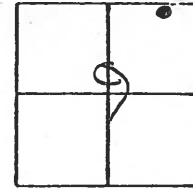
TYPE MONUMENT P.K. & Washer

ON SURFACE - BELOW yes

LEFT- & PAW'T. - RIGHT 1.2

8.8 TO L+ EDGE PAVEMENT

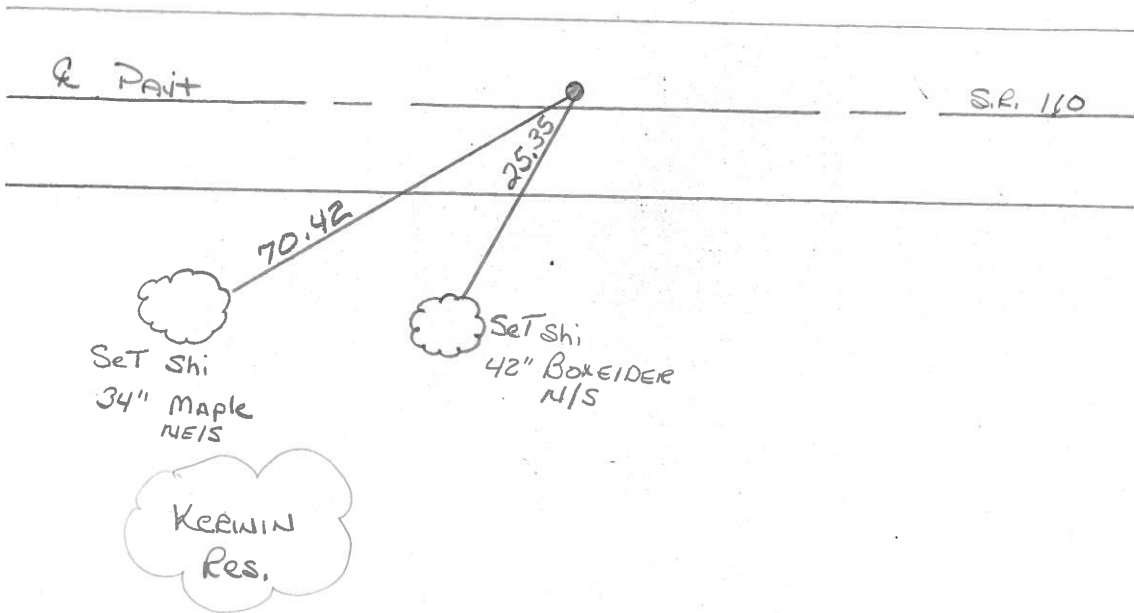
S.L.M. 563+80



Set. P.K. & Washer  
9-28-90  
mB

NOTE: Ref Ties on this  
Page are on & PAW'T  
CONTROL PTS. / NOT on  
Sec LINE

RECORD: P.I.  
Δ = 2°-43' Rt

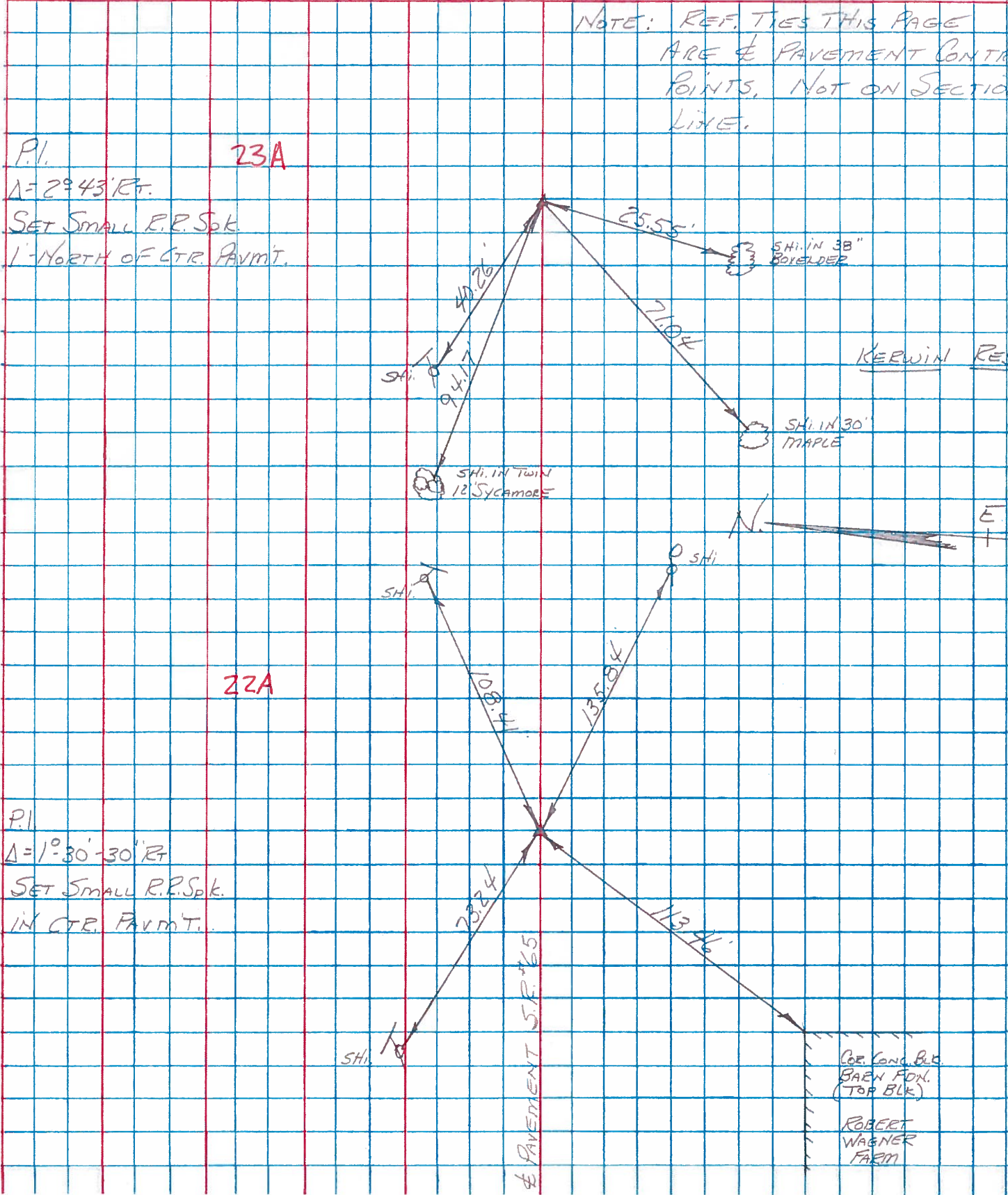




PERSONNEL TITLE PERSONNEL TITLE  
 BURNSIDE \_\_\_\_\_  
 SMITH \_\_\_\_\_  
 BOWERS \_\_\_\_\_  
 MEAD \_\_\_\_\_

COUNTY HENRY DATE 9-26-74  
 S. R. 110 WEATHER CLEAR  
 SEC. \_\_\_\_\_ TEMP. +72°

DESCRIPTION CENTERLINE CONTROL POINTS JOB NO. \_\_\_\_\_



PERSONNEL TITLE PERSONNEL TITLE

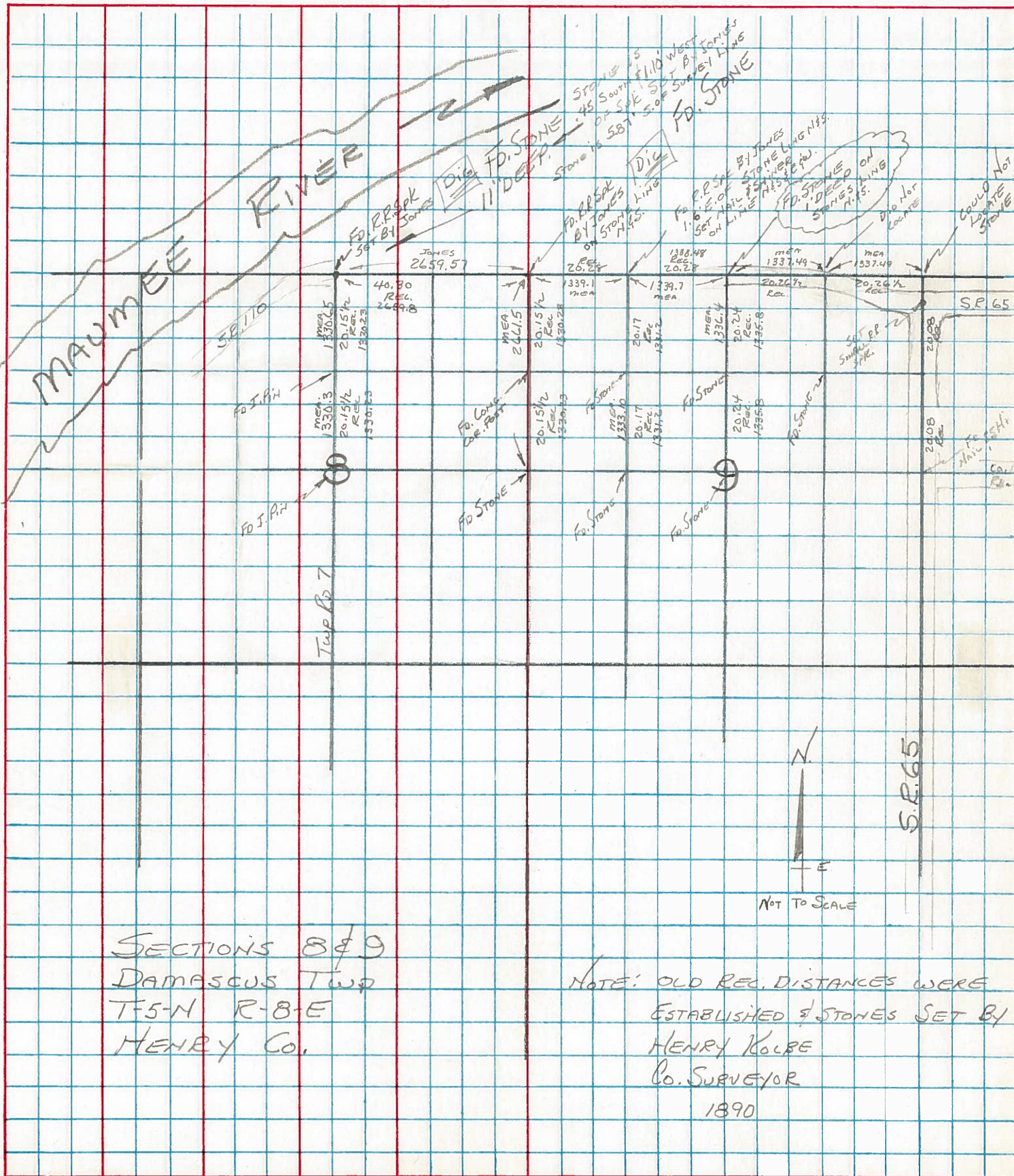
COUNTY HENRY DATE \_\_\_\_\_

S. R. 110 & 65 WEATHER \_\_\_\_\_

SEC. 8 & 9 TEMP. \_\_\_\_\_

DESCRIPTION STONE LOCATION JOB NO. \_\_\_\_\_

LEFT CENTER LINE RIGHT



SECTIONS 8 & 9  
 DAMASCUS TWP  
 T-5-N R-8-E  
 HENRY CO.

NOTE: OLD REC. DISTANCES WERE  
 ESTABLISHED BY STONES SET BY  
 HENRY KOLBE  
 CO. SURVEYOR  
 1890

