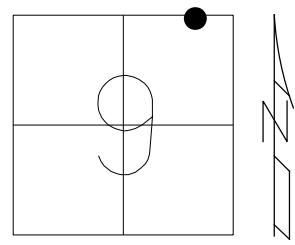


O.D.O.T. DISTRICT 2 SURVEY OFFICE (USE ONLY)

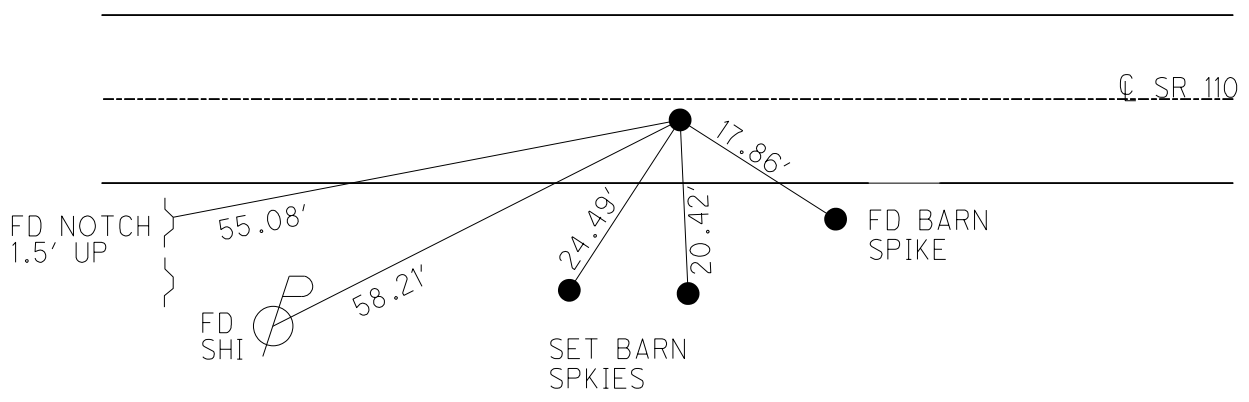
PERSONNEL \_\_\_\_\_ REFERENCE NO. 23 B SHEET 60 OF 61  
 NOTES MILLER DATE 12/19/23 ROUTE SR 110  
 H.C. AUBLE WEATHER CLEAR COUNTY HENRY  
 R.C. RHOADES TEMP. 27° TOWNSHIP DAMASCUS  
ASTON SECTION 9  
 DWG BY RHOADES PID 114846 T 5 N R 8 E

TYPE MONUMENT MAG/WASHER  
 ON SURFACE - ~~BELOW~~ ON  
 OFFSET Q PAVEMENT 2.4' LT : ~~R~~  
7.1' TO LT EDGE PAVEMENT  
 STATION: 559+42.90



HORIZ. DATUM: NAD83 2011 GEOID: NAVD88 2018  
 GRID: NORTHING: 640257.309 EASTING: 1572666.359

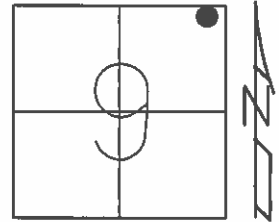
RECORD: PI  
 DEF= 2°-44' LT  
 Q PAV'T CONTROL  
 NOT ON SEC. LINE  
 SET MAG/WASHER  
 10/27/04, MC  
 FD MAG/WASHER  
 REFB23  
 9/01/15, JFO  
 8/03/16 JMR  
 REFB23  
 12/21/21, DSA  
 SET MAG/WASHER  
 12/19/23, DSA



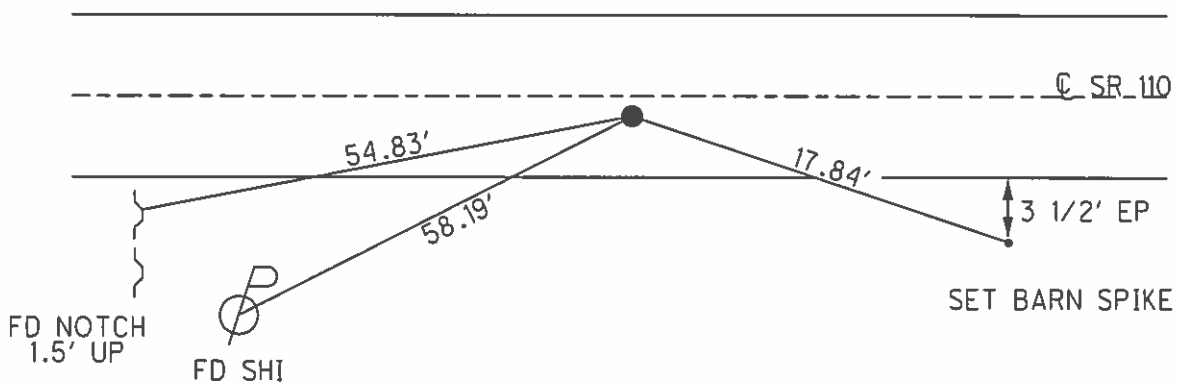
O.D.O.T. DISTRICT 2 SURVEY OFFICE (USE ONLY)

PERSONNEL \_\_\_\_\_ REFERENCE NO. 23-A SHEET 57 OF 58  
 NOTES RHOADES DATE 09/02/15 ROUTE SR 110  
 H.C. O' DONNELL WEATHER CLEAR COUNTY HENRY  
 R.C. RHOADES TEMP. 82° TOWNSHIP DAMASCUS  
 \_\_\_\_\_ SECTION 9  
 \_\_\_\_\_ T 5 N R 8 E

TYPE MONUMENT \_\_\_\_\_ MAG/W \_\_\_\_\_  
 ON SURFACE - ~~BELOW~~ \_\_\_\_\_ ON \_\_\_\_\_  
 LEFT - ~~C PAV'T~~ - RIGHT \_\_\_\_\_ 2.4'  
 \_\_\_\_\_ 7.1' TO RT EDGE PAVEMENT  
 S.L.M. \_\_\_\_\_ 567+66  
 Grid: Northing: 640257.309 Easting: 1572666.359



RECORD: PI  
 DEF. = 2°-44' LT  
 NOTE: REF TIES ON THIS PAGE  
 ARE CL PAV'T CONTROL ONLY/NOT  
 ON SEC. LINE  
 RESET FD MAG/WASHER  
 10/27/04 MC  
 GPS, REFB23  
 09/01/15, JFO  
 UNCOVERED  
 08/03/16 JMR



O.D.O.T. DISTRICT 2 SURVEY OFFICE

PERSONNEL

REFERENCE NO. 23-B

SHEET 37 OF 37

NOTES BARNHISEL

DATE 09/15/04

ROUTE S.R. 110

H.C. CANTERBURY

WEATHER CLEAR

COUNTY HENRY

R.C. HOOKER

TEMP. +80°

TOWNSHIP DAMASCUS

SECTION 9

T 5 N R 8 E

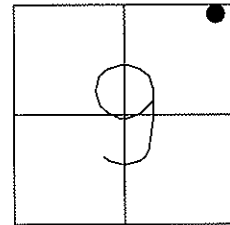
TYPE MONUMENT PK & WASHER

ON SURFACE - ~~BELOW~~ YES

~~LEFT~~ - CL PAV'T - RIGHT 2.4'

7.1' TO RT EDGE PAVEMENT

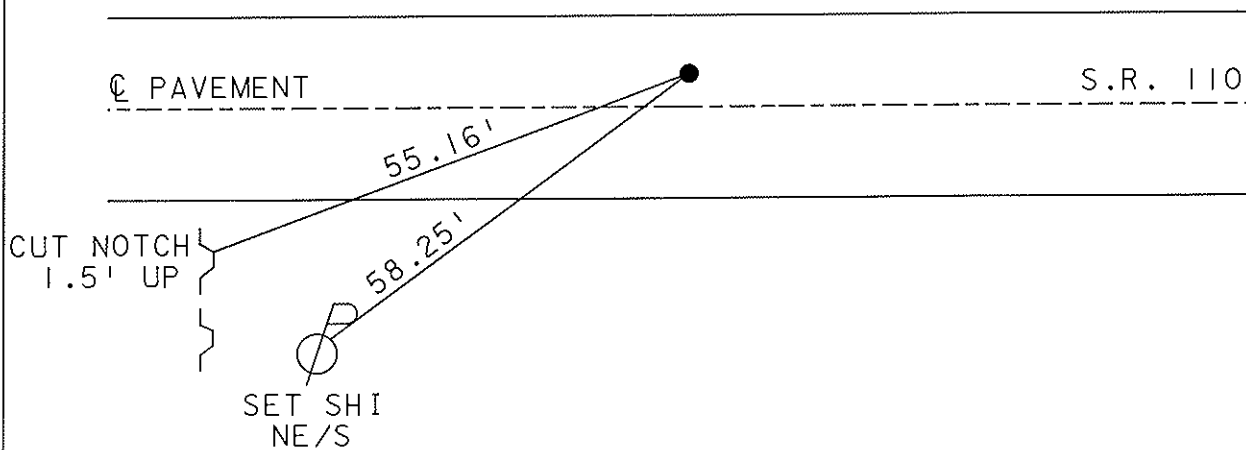
S.L.M. 567+66



RECORD: PI  
DEF. = 2°-44' LT

RESET MAG & WASHER  
10/27/04  
MC

NOTE: REF TIES ON THIS PAGE  
ARE CL PAV'T CONTROL ONLY/NOT  
ON SEC. LINE



# O.D.O.T. DISTRICT 2 SURVEY OFFICE

PERSONNEL

REFERENCE NO. 23-B

SHEET \_\_\_\_\_ OF \_\_\_\_\_

NOTES BARNHISEL

H.C. " "

R.C. HOFFMAN

DATE 9-25-90

WEATHER CLEAR-WINDY

TEMP. +65°

ROUTE 110

COUNTY HENRY

TOWNSHIP DAMASCUS

SECTION 9

T 5 N R 8 E

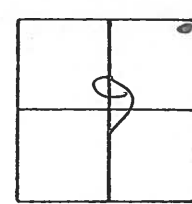
TYPE MONUMENT P.I. & Washer

ON SURFACE - BELOW yes

LEFT - & PAV'T. - RIGHT 1.9

8.6 TO RT EDGE PAVEMENT

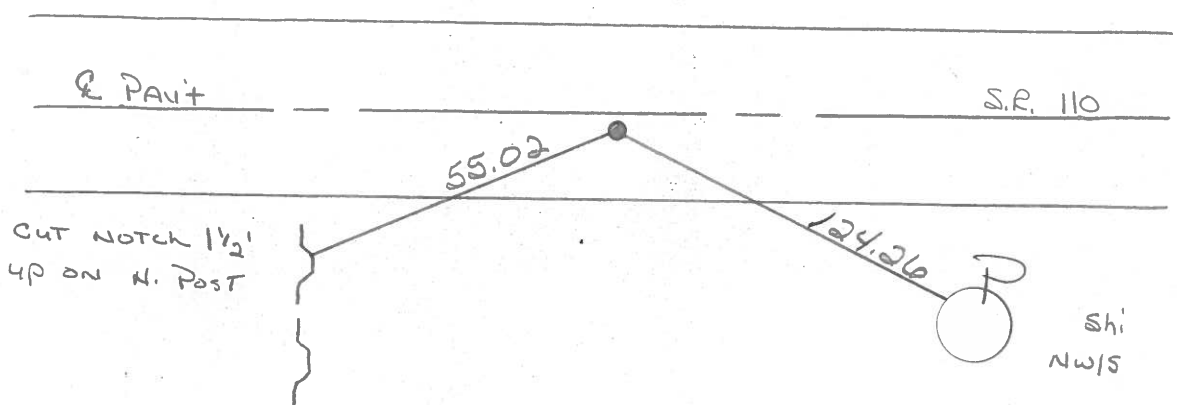
S.L.M. 567+58



Set P.I. & Washer  
9-28-90  
MB

NOTE: Ref Ties on This Page  
are on & Pav't Control Pts./  
NOT ON Sec LINE

RECORD: P.I.  
 $\Delta = 2^{\circ}.44' \text{ LT}$



County HENRY S.R. 110

Date 4-28-82

Township DAMASCUS

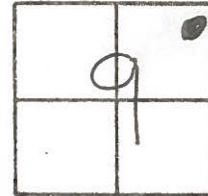
Weather \_\_\_\_\_

Section 9

Temp. +50°

T. N, R. E

Personnel HOFFMAN



HOUSEHOLDER

LOENRKE

~~23A~~  
23B

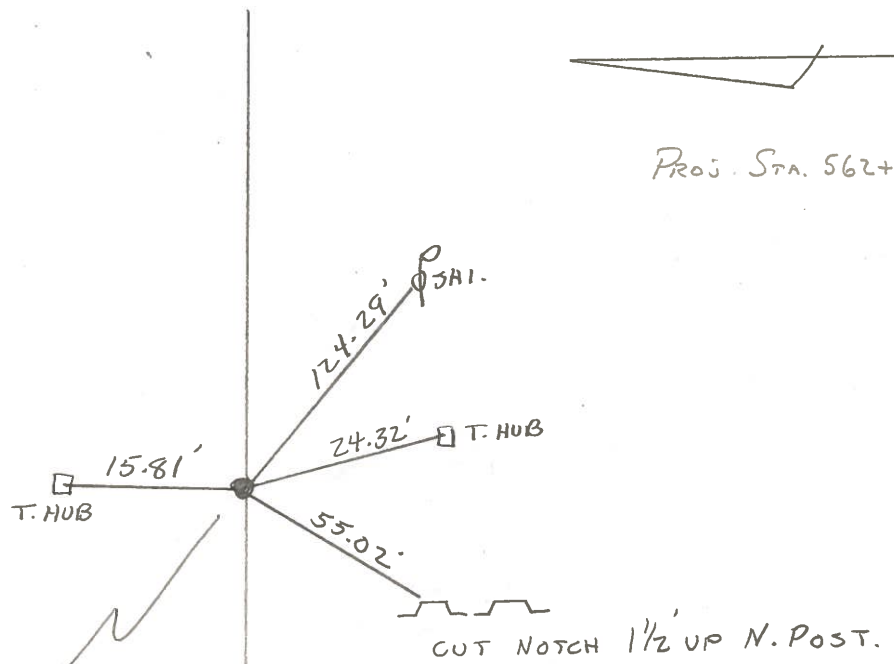
P.I.

$\Delta = 20.44' LT.$

PROJ. STA.  $\pm$  562+56



Proj. Sta. 562+56



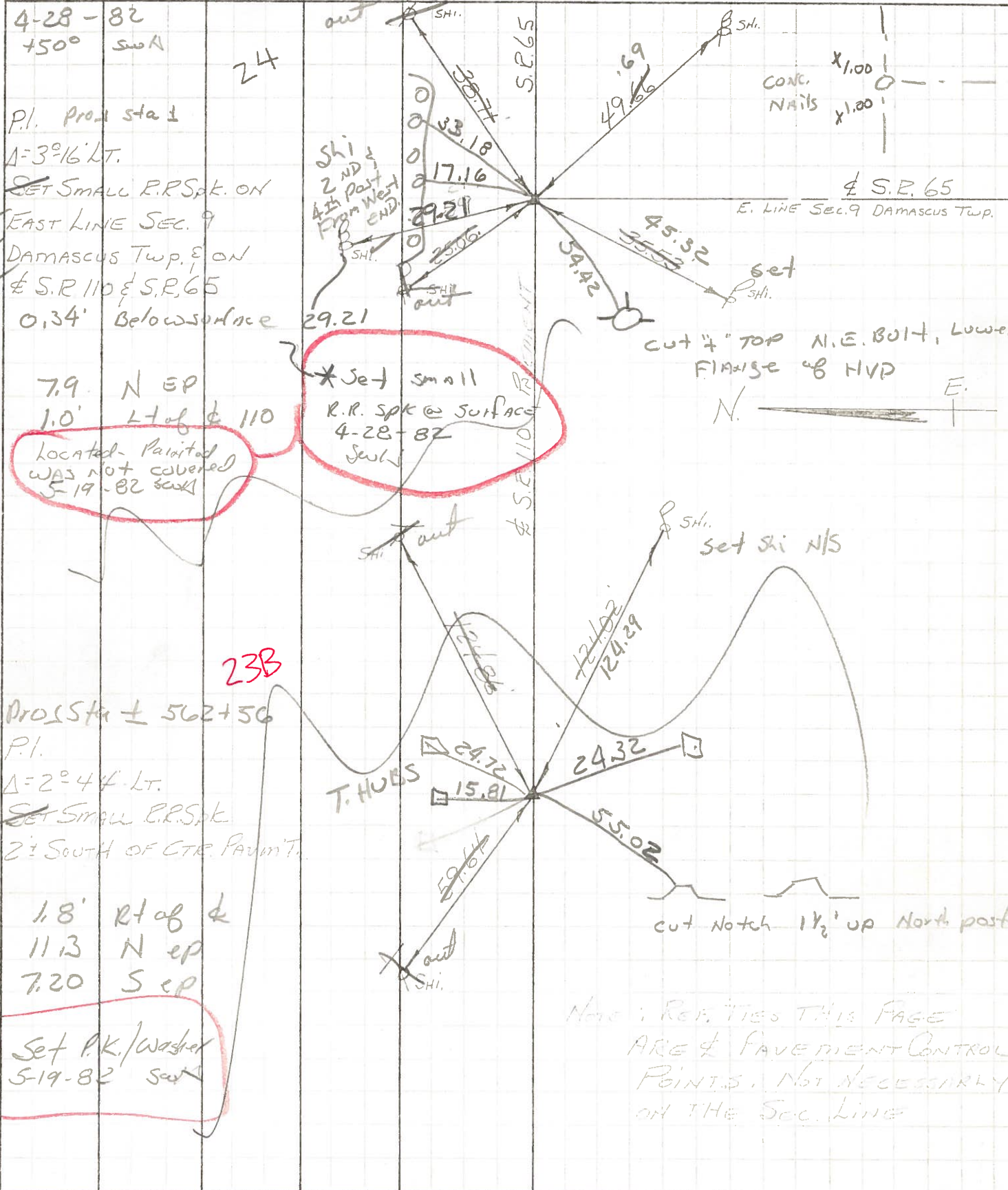
FD. SMALL R.R. SPR.  
1.8' RT. OF  $\phi$   
11.3 - N TO EDGE PAUT.  
7.2 - S. TO EDGE PAUT.

Set P.K./WASHER  
5-19-82  
S.W.H.

NOTE !! REF. TIES THIS PAGE  
ARE  $\phi$  PAUT. CONTROL POINT  
NOT NECESSARILY ON  
THE SEC. LINE

PERSONNEL BURNSIDE TITLE \_\_\_\_\_ PERSONNEL SMITH TITLE \_\_\_\_\_ COUNTY HENRY DATE 9-26-74  
 PERSONNEL BOWERS TITLE \_\_\_\_\_ S. R. 110 & 65 WEATHER CLEAR  
 PERSONNEL MEAD TITLE \_\_\_\_\_ SEC. \_\_\_\_\_ TEMP. +72°

DESCRIPTION CENTER LINE CONTROL TIES JOB NO. \_\_\_\_\_



fd. ~~SET SMALL R.R. Spk. ON EAST LINE SEC. 9 DAMASCUS Twp. E ON & S.R. 110 & S.R. 65~~  
 0.34' Below surface

7.9 N EP  
 1.0' LT of & 110  
 located - Painted WAS NOT covered 5-19-82 set

\*Set small R.R. Spk @ surface 4-28-82 set

fd. PROS Sta ± 562+56  
 P.I.  
 Δ = 2° 44' LT.  
 SET SMALL R.R. Spk 2' SOUTH OF CTR. PAINT.

1.8' RT of &  
 11.3 N EP  
 7.20 S EP

Set P.K./washer 5-19-82 set

Note: REPTIES THIS PAGE ARE & PAVEMENT CONTROL POINTS. NOT NECESSARILY ON THE SEC. LINE

PERSONNEL TITLE PERSONNEL TITLE

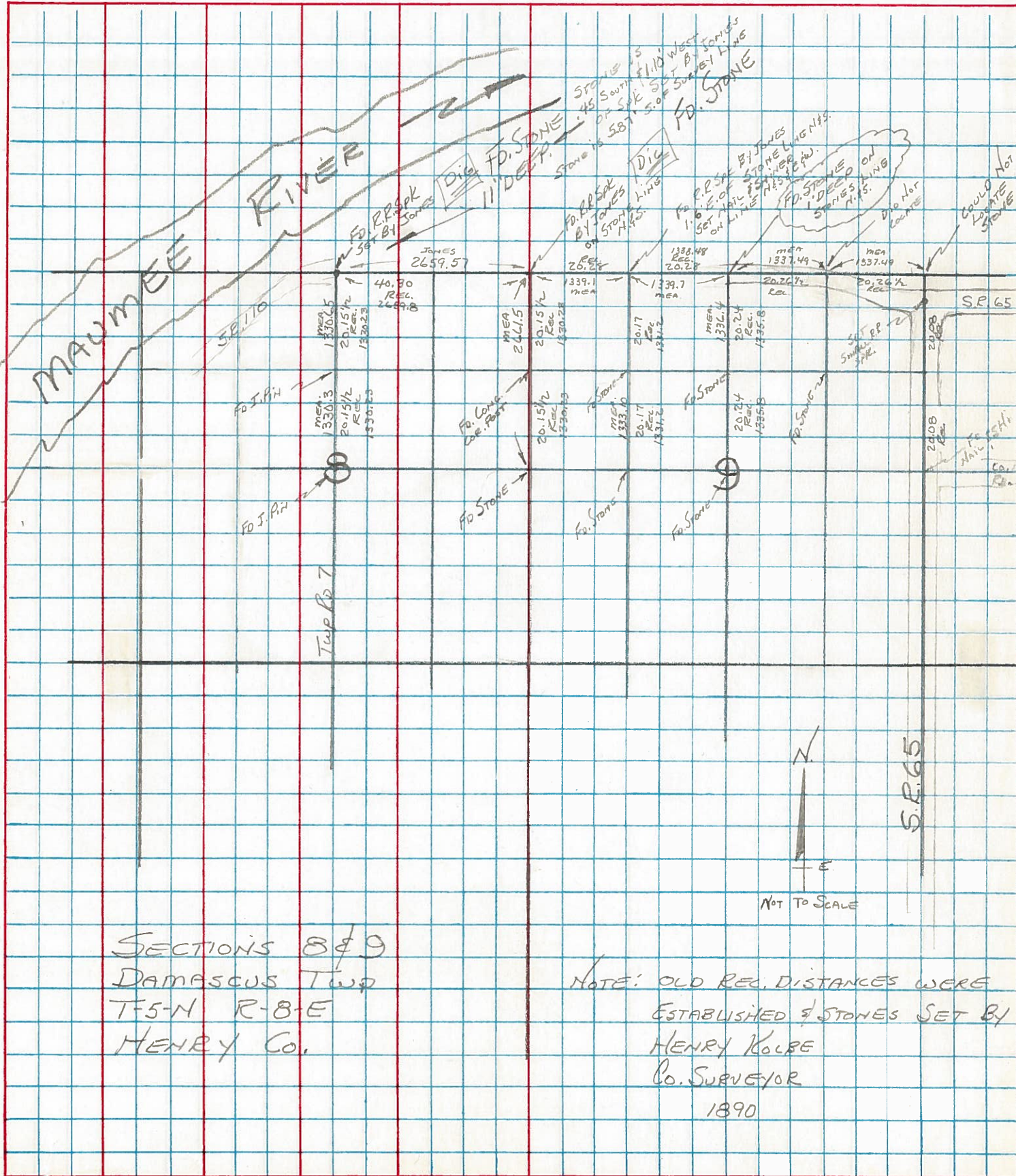
COUNTY HENRY DATE \_\_\_\_\_

S. R. 110 & 65 WEATHER \_\_\_\_\_

SEC. 8 & 9 TEMP. \_\_\_\_\_

DESCRIPTION STONE LOCATION JOB NO. \_\_\_\_\_

LEFT CENTER LINE RIGHT



SECTIONS 8 & 9  
 DAMASCUS TWP  
 T-5-N R-8-E  
 HENRY CO.

NOTE: OLD REC. DISTANCES WERE ESTABLISHED BY STONES SET BY HENRY KOLBE CO. SURVEYOR 1890

