

O.D.O.T. DISTRICT 2 SURVEY OFFICE (USE ONLY)

PERSONNEL

REFERENCE NO. 1

SHEET 1 OF 20

NOTES RHOADES DATE 6-7-18
 H.C. O'DONNELL WEATHER CLOUDY
 R.C. TRENKA TEMP. 65°

ROUTE SR 281
 COUNTY HENRY
 TOWNSHIP FLAT ROCK
 SECTION 30
 T 4 N R 6 E

DWG BY JAMES PID 102763

TYPE MONUMENT R.R.SPIKE

~~ON SURFACE~~ - BELOW 1"

OFFSET Q PAVEMENT 6' (CR 19) LT : ~~RT~~

- TO - EDGE PAVEMENT

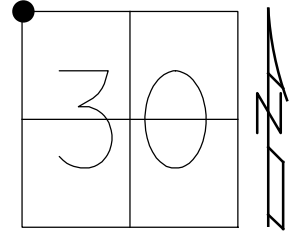
STATION: 0+00 (SR 108)

HORZ.DATUM: NAD83 2011

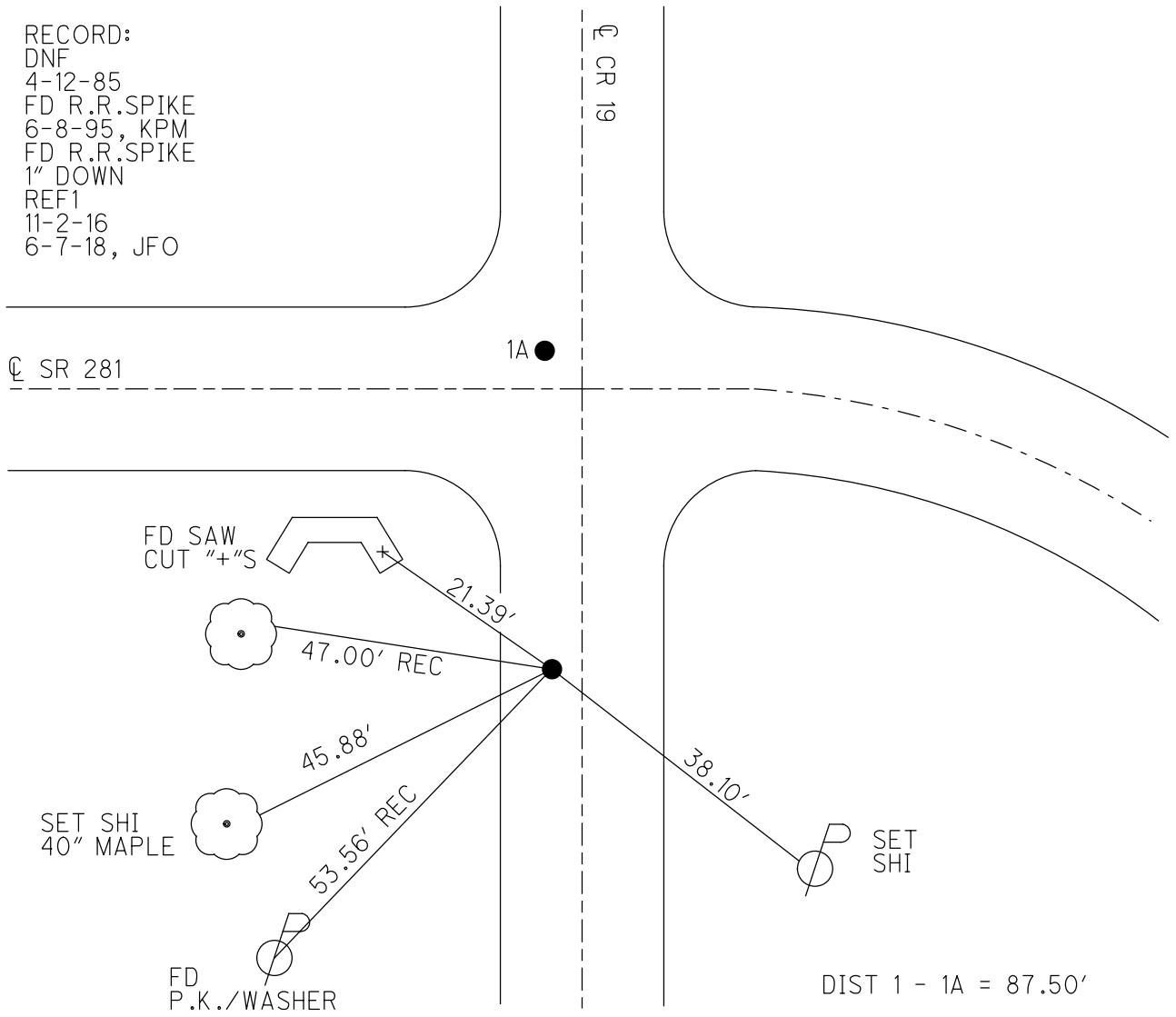
GEOID: NAVD88 2012A

GRID: NORTHING: 593226.279

EASTING: 1493773.003



RECORD:
 DNF
 4-12-85
 FD R.R.SPIKE
 6-8-95, KPM
 FD R.R.SPIKE
 1" DOWN
 REF1
 11-2-16
 6-7-18, JFO



DIST 1 - 1A = 87.50'

O.D.O.T. DISTRICT 2 SURVEY OFFICE (USE ONLY)

PERSONNEL

REFERENCE NO. 1 A

SHEET 2 OF 20

NOTES RHOADES
 H.C. O'DONNELL
 R.C. TRENKA

DATE 6-7-18
 WEATHER CLOUDY
 TEMP. 65°

ROUTE SR 281
 COUNTY HENRY
 TOWNSHIP FLAT ROCK
 SECTION 30
 T 4 N R 6 E

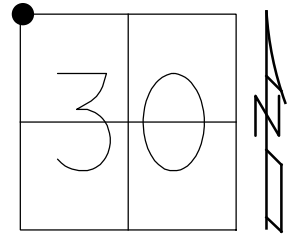
DWG BY JAMES PID 102763

TYPE MONUMENT R.R.SPIKE

~~ON SURFACE~~ - BELOW 6"

OFFSET $\text{\textcircled{C}}$ PAVEMENT 1.5', 6' LT CR 19 LT : ~~RT~~
 - TO - EDGE PAVEMENT

STATION: 0+00

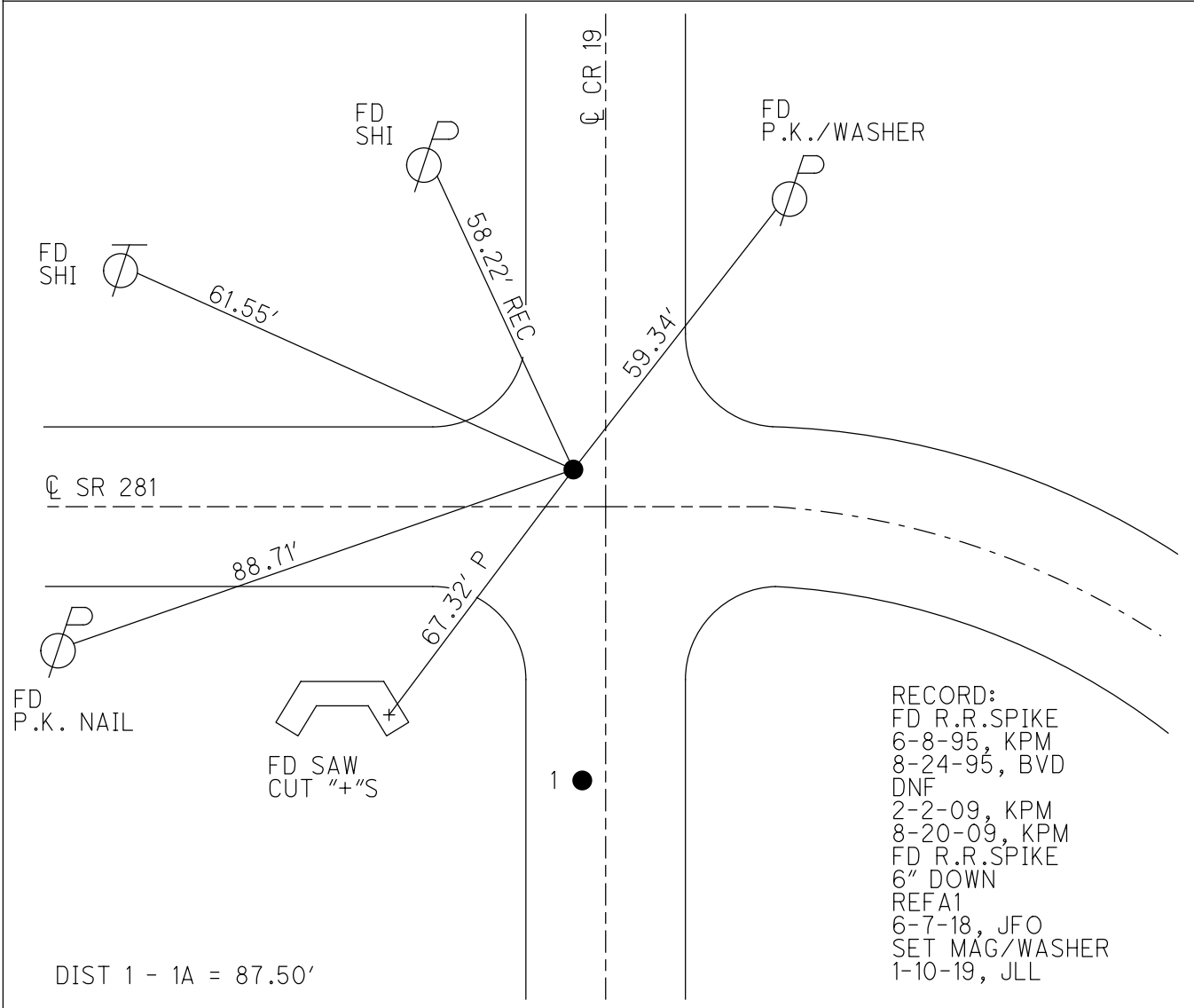


HORIZ.DATUM: NAD83 2011

GEOID: NAVD88 2012A

GRID: NORTHING: 593313.784

EASTING: 1493773.356

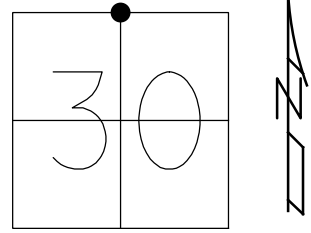


O.D.O.T. DISTRICT 2 SURVEY OFFICE (USE ONLY)

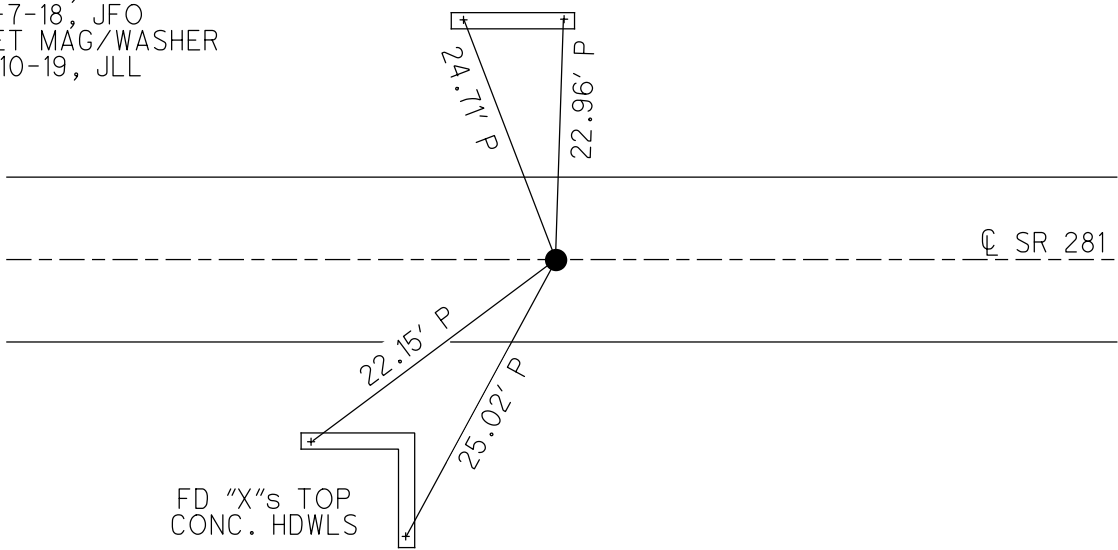
PERSONNEL _____ REFERENCE NO. 2 SHEET 3 OF 20
 NOTES RHOADES DATE 6-7-18 ROUTE SR 281
 H.C. O'DONNELL WEATHER CLOUDY COUNTY HENRY
 R.C. TRENKA TEMP. 65° TOWNSHIP FLAT ROCK
 _____ SECTION 30
 DWG BY JAMES PID 102763 T 4 N R 6 E

TYPE MONUMENT MAG/WASHER
 ON SURFACE - ~~BELOW~~ ON
 OFFSET ☉ PAVEMENT 2.0' ~~±~~ : RT
7.1' TO RT EDGE PAVEMENT
 STATION: 20+68.37

HORZ. DATUM: NAD83 2011 GEOID: NAVD88 2012A
 GRID: NORTHING: 593196.8475 EASTING: 1495831.355



- RECORD:
 FD R.R. SPIKE
 1 1/2" DOWN
 1985
 SET P.K./WASHER
 8-24-95, KPM
 FD P.K./WASHER
 8-20-09, KPM
 SET MAG/WASHER
 10-19-09, KPM
 FD MAG/WASHER
 REF2
 11-5-13, TMR
 FD MAG/WASHER
 REF2
 11-2-16, JFO
 6-7-18, JFO
 SET MAG/WASHER
 1-10-19, JLL



O.D.O.T. DISTRICT 2 SURVEY OFFICE (USE ONLY)

PERSONNEL

REFERENCE NO. 3

SHEET 4 OF 20

NOTES RHOADES DATE 6-7-18
 H.C. O'DONNELL WEATHER CLOUDY
 R.C. TRENKA TEMP. 65°

ROUTE SR 281
 COUNTY HENRY
 TOWNSHIP FLAT ROCK
 SECTION 30
 T 4 N R 6 E

DWG BY JAMES PID 102763

TYPE MONUMENT SM R.R.SPIKE

ON SURFACE - ~~BELOW~~ ON _____

OFFSET \varnothing PAVEMENT 1.8' ~~LT~~ : RT

~~TO~~ ~~EDGE PAVEMENT~~

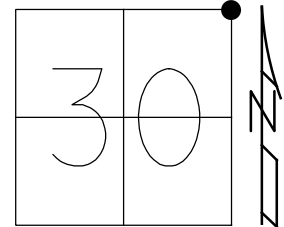
STATION: 47+12.73

HORZ.DATUM: NAD83 2011

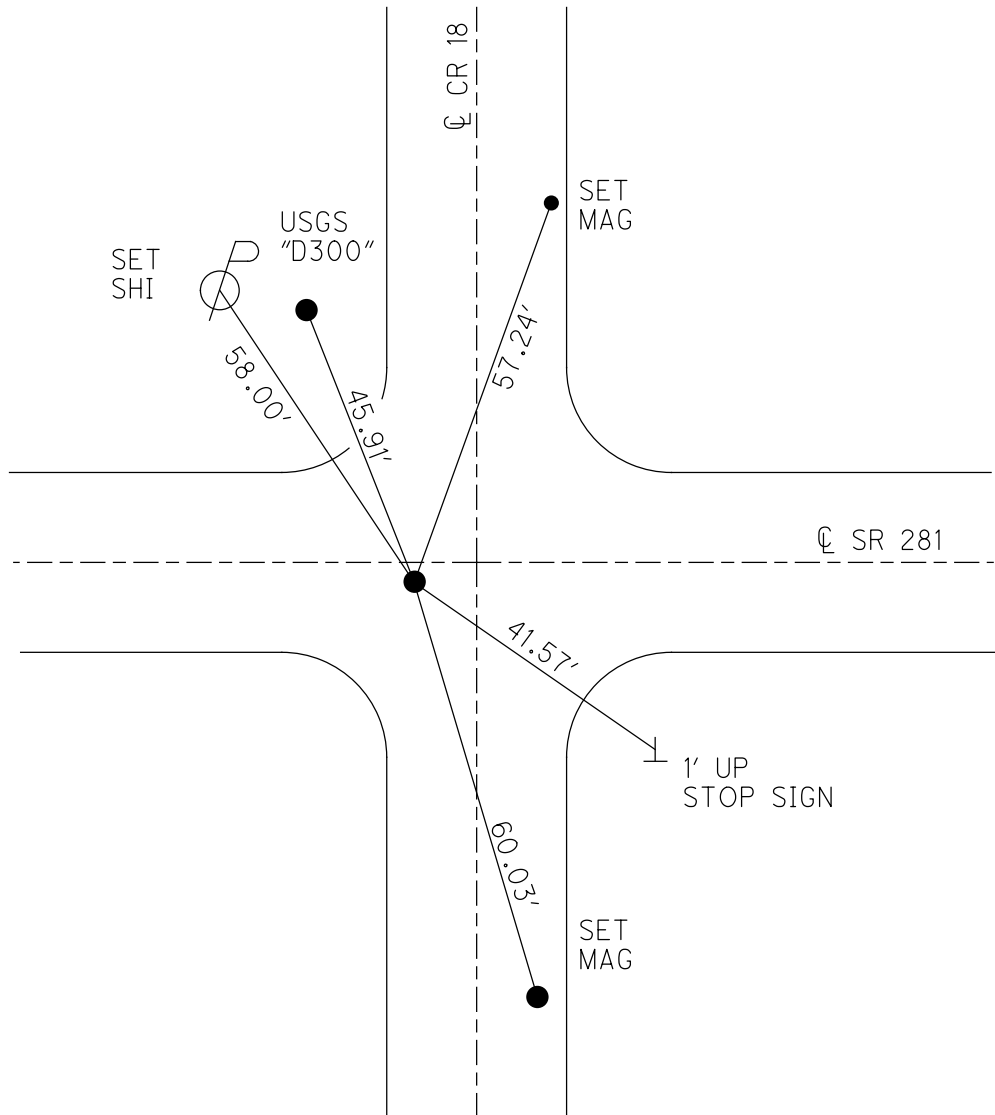
GEOID: NAVD88 2012A

GRID: NORTHING: 593158.721

EASTING: 1498475.442



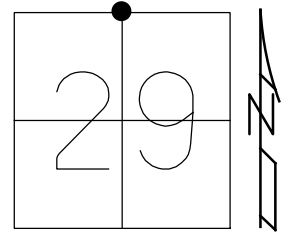
- RECORD:
 FD P.K.NAIL
 1985
 SET P.K./WASHER
 8-28-95, KPM
 FD P.K./WASHER
 8-20-09, KPM
 SET MAG/WASHER
 10-19-09, KPM
 FD MAG/WASHER
 REF3
 11-5-13, TMR
 FD SM R.R.SPIKE
 REF3
 8-26-16
 11-2-16, JFO
 SET MAG/WASHER
 1-10-19, JLL



O.D.O.T. DISTRICT 2 SURVEY OFFICE (USE ONLY)

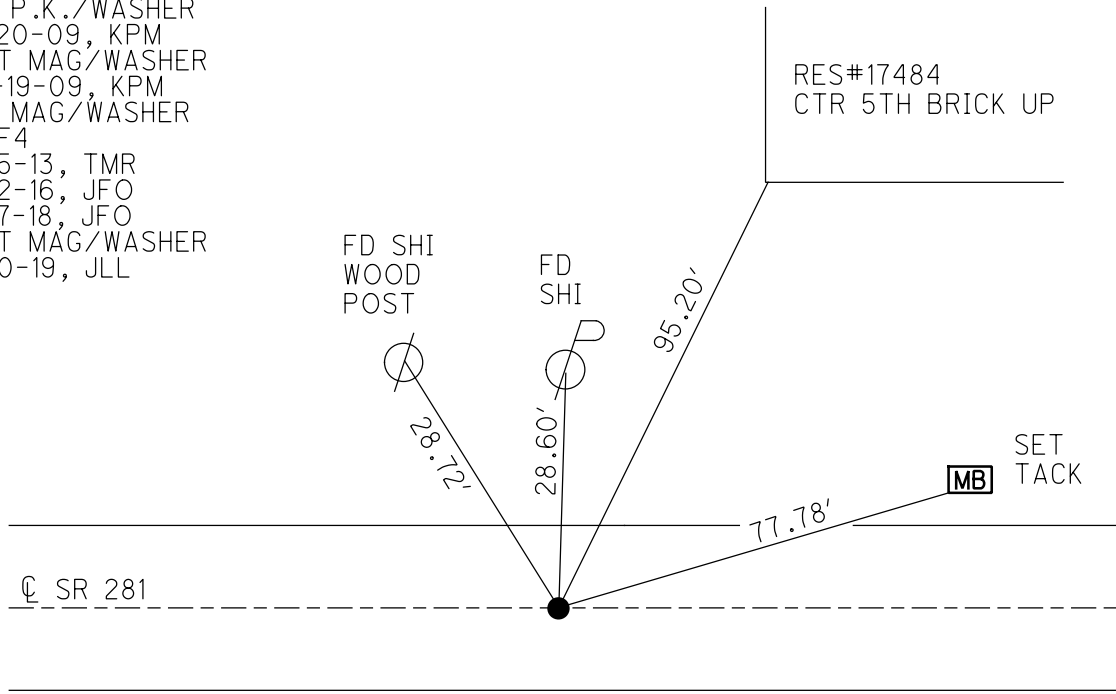
PERSONNEL _____ REFERENCE NO. 4 SHEET 5 OF 20
 NOTES JAMES DATE 1-10-19 ROUTE SR 281
 H.C. LEU WEATHER CLOUDY COUNTY HENRY
 R.C. MILLER TEMP. 24° TOWNSHIP FLAT ROCK
 DWG BY JAMES PID 102763 SECTION 29
 T 4 N R 6 E

TYPE MONUMENT MAG/WASHER
 ON SURFACE - ~~BELOW~~ ON
 OFFSET ☉ PAVEMENT ON LT : RT
9.8' TO LT EDGE PAVEMENT
 STATION: 73+88.25



HORZ.DATUM: NAD83 2011 GEOID: NAVD88 2012A
 GRID: NORTHING: 593134.559 EASTING: 1501150.850

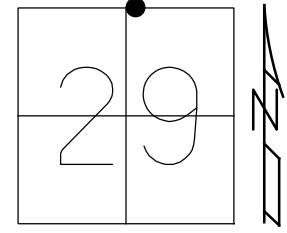
- RECORD:
 FD R.R.SPIKE
 1985
 SET P.K./WASHER
 8-28-95, KPM
 FD P.K./WASHER
 8-20-09, KPM
 SET MAG/WASHER
 10-19-09, KPM
 FD MAG/WASHER
 REF 4
 11-5-13, TMR
 11-2-16, JFO
 6-7-18, JFO
 SET MAG/WASHER
 1-10-19, JLL



O.D.O.T. DISTRICT 2 SURVEY OFFICE (USE ONLY)

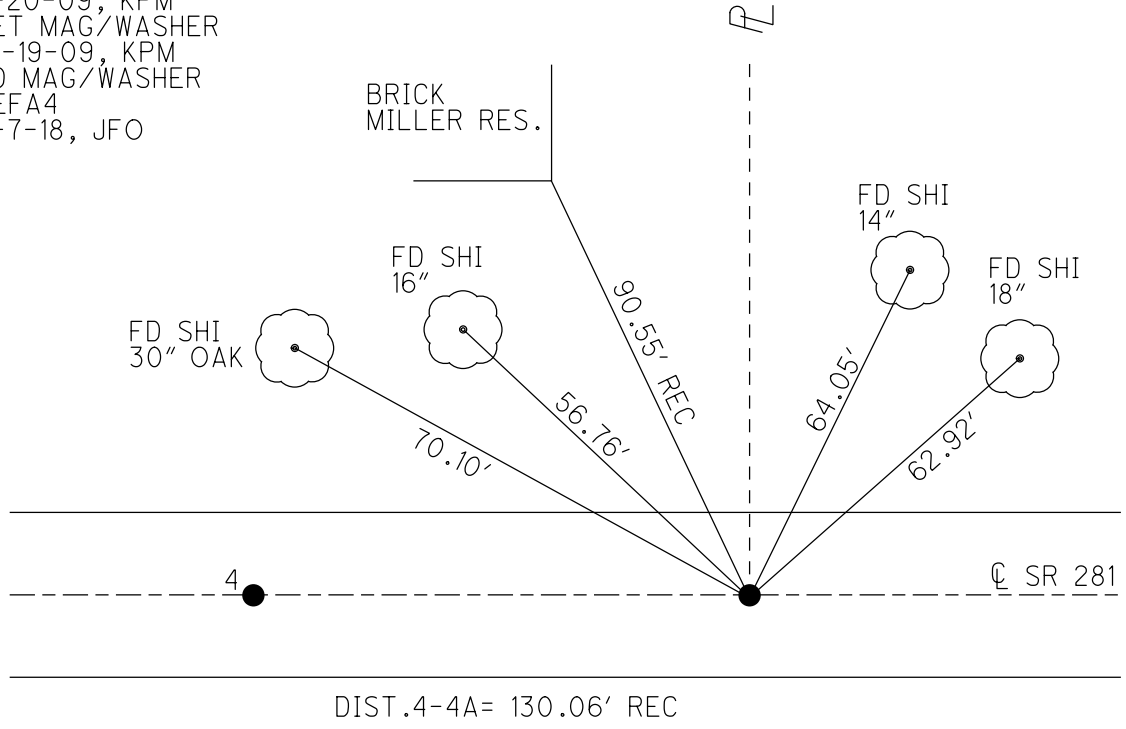
PERSONNEL _____ REFERENCE NO. 4 A SHEET 6 OF 20
 NOTES RHOADES DATE 6-7-18 ROUTE SR 281
 H.C. O'DONNELL WEATHER CLOUDY COUNTY HENRY
 R.C. TRENKA TEMP. 65° TOWNSHIP FLAT ROCK
 _____ SECTION 29
 DWG BY JAMES PID 102763 T 4 N R 6 E

TYPE MONUMENT MAG/WASHER
 ON SURFACE - ~~BELOW~~ ON
 OFFSET ☉ PAVEMENT 1.4' ~~±~~ : RT
8.3' TO RT EDGE PAVEMENT
 STATION: 75+18.31



HORZ. DATUM: NAD83 2011 GEOID: NAVD88 2012A
 GRID: NORTHING: 593130.768 EASTING: 1501280.770

RECORD:
 FD P.K.NAIL
 1985
 SET P.K./WASHER
 6-8-95, KPM
 FD MAG/WASHER
 8-20-09, KPM
 SET MAG/WASHER
 10-19-09, KPM
 FD MAG/WASHER
 REFA4
 6-7-18, JFO



O.D.O.T. DISTRICT 2 SURVEY OFFICE (USE ONLY)

PERSONNEL

REFERENCE NO. 4 B

SHEET 7 OF 20

NOTES RHOADES

DATE 6-7-18

ROUTE SR 281

H.C. O'DONNELL

WEATHER CLOUDY

COUNTY HENRY

R.C. TRENKA

TEMP. 65°

TOWNSHIP FLAT ROCK

SECTION 29

DWG BY JAMES

PID 102763

T 4 N R 6 E

TYPE MONUMENT P.K. SHANK

ON SURFACE - ~~BELOW~~ ON

OFFSET Q PAVEMENT 4' ~~LT~~ : RT

6.6' TO RT EDGE PAVEMENT

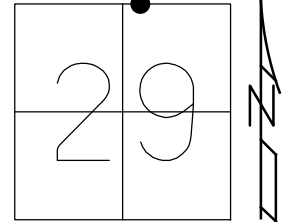
STATION: 76+48.17

HORZ. DATUM: NAD83 2011

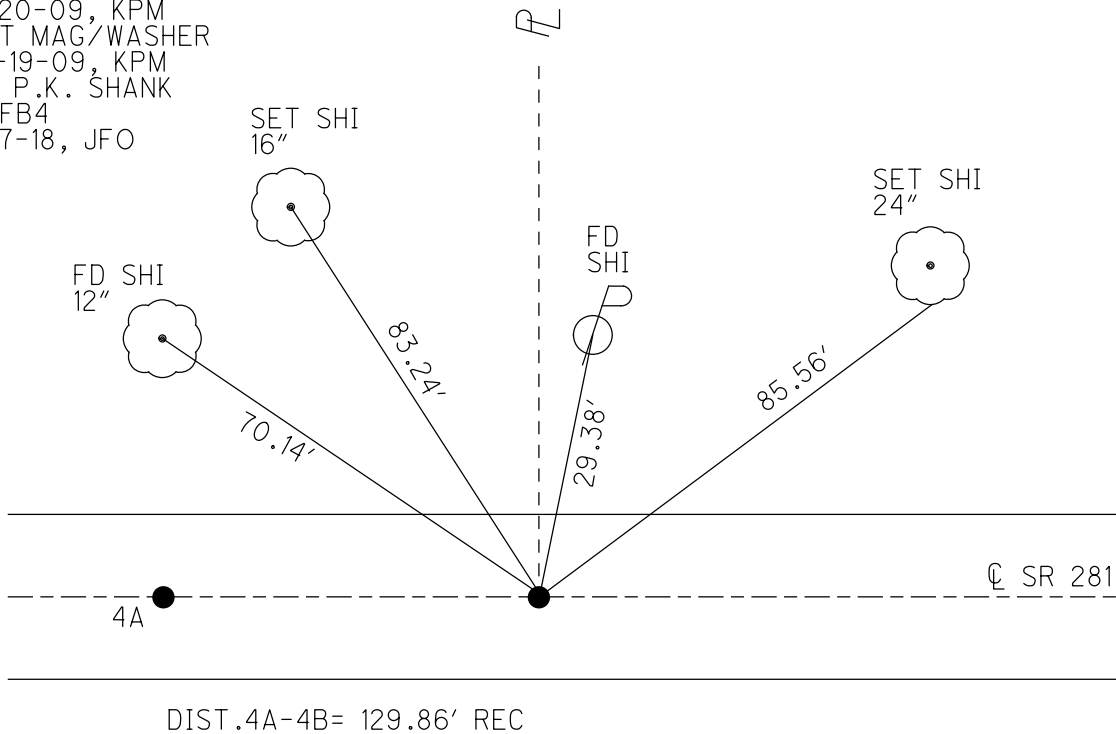
GEOID: NAVD88 2012A

GRID: NORTHING: 593126.832

EASTING: 1501410.527



RECORD:
 FD P.K.NAIL
 1985
 SET P.K./WASHER
 6-8-95, KPM
 FD P.K./WASHER
 8-20-09, KPM
 SET MAG/WASHER
 10-19-09, KPM
 FD P.K. SHANK
 REF B4
 6-7-18, JFO



O.D.O.T. DISTRICT 2 SURVEY OFFICE (USE ONLY)

PERSONNEL

REFERENCE NO. 4 C

SHEET 8 OF 20

NOTES RHOADES DATE 6-7-18
 H.C. O'DONNELL WEATHER CLOUDY
 R.C. TRENKA TEMP. 65°

ROUTE SR 281
 COUNTY HENRY
 TOWNSHIP FLAT ROCK
 SECTION 29

DWG BY JAMES PID 102763

T 4 N R 6 E

TYPE MONUMENT MAG/WASHER

ON SURFACE - ~~BELOW~~ ON

OFFSET C PAVEMENT 5.4' ~~LT~~ : RT

5.0' TO RT EDGE PAVEMENT

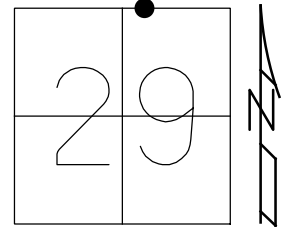
STATION: 77+78.13

HORIZ.DATUM: NAD83 2011

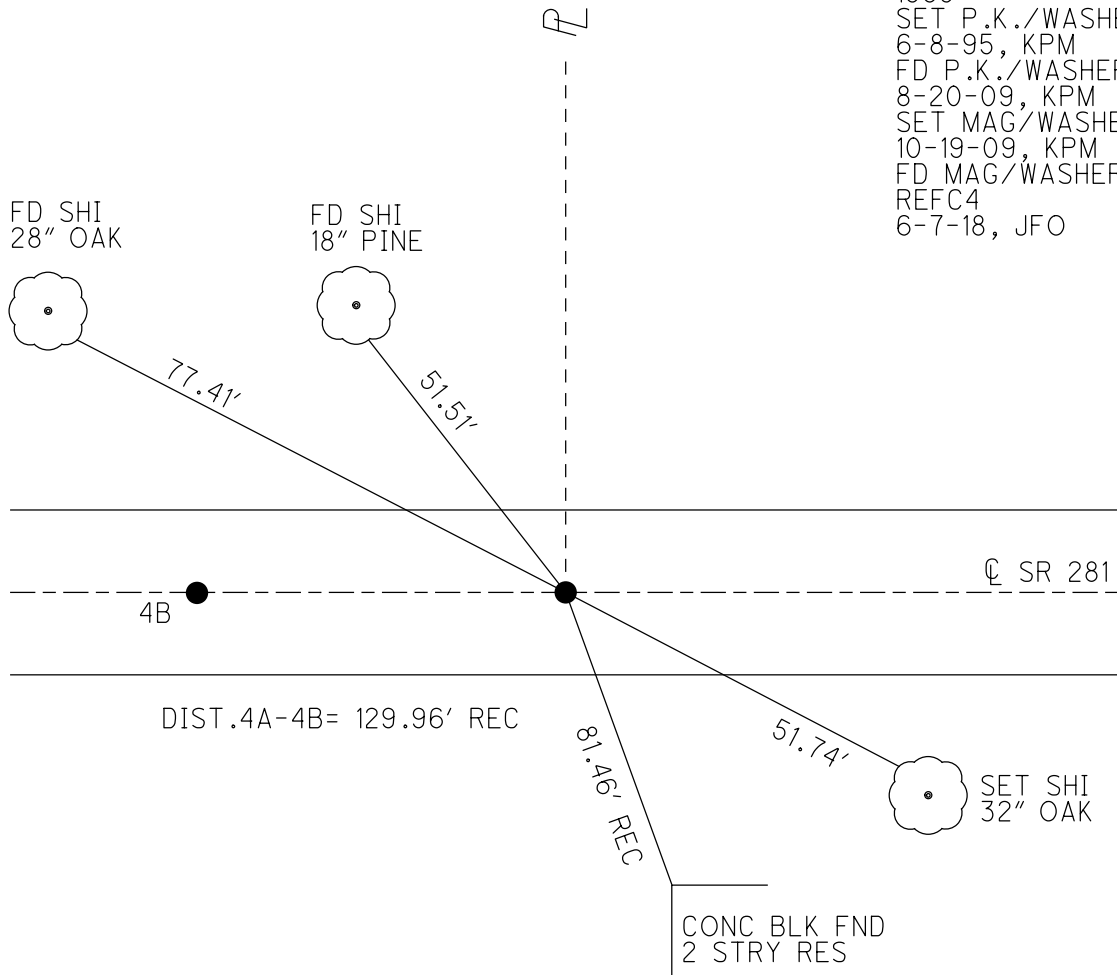
GEOID: NAVD88 2012A

GRID: NORTHING: 593122.885

EASTING: 1501540.408



RECORD:
 FD R.R.SPIKE
 1" DOWN
 1985
 SET P.K./WASHER
 6-8-95, KPM
 FD P.K./WASHER
 8-20-09, KPM
 SET MAG/WASHER
 10-19-09, KPM
 FD MAG/WASHER
 REFC4
 6-7-18, JFO



O.D.O.T. DISTRICT 2 SURVEY OFFICE (USE ONLY)

PERSONNEL

REFERENCE NO. 5

SHEET 9 OF 20

NOTES RHOADES DATE 6/7/18

H.C. O'DONNELL WEATHER CLOUDY

R.C. TRENKA TEMP. 65°

ROUTE SR 281

COUNTY HENRY

TOWNSHIP FLAT ROCK

SECTION 29

DWG BY NIESE PID 105662

T 4 N R 6 E

TYPE MONUMENT MAG/WASHER

ON SURFACE - ~~BELOW~~ ON

OFFSET ☒ PAVEMENT ON LT : RT

9.8' TO LT EDGE PAVEMENT

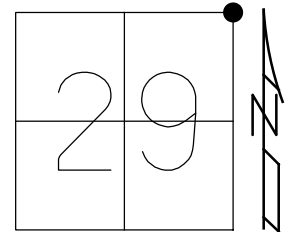
STATION: 100+59.26

HORIZ.DATUM: NAD83 2011

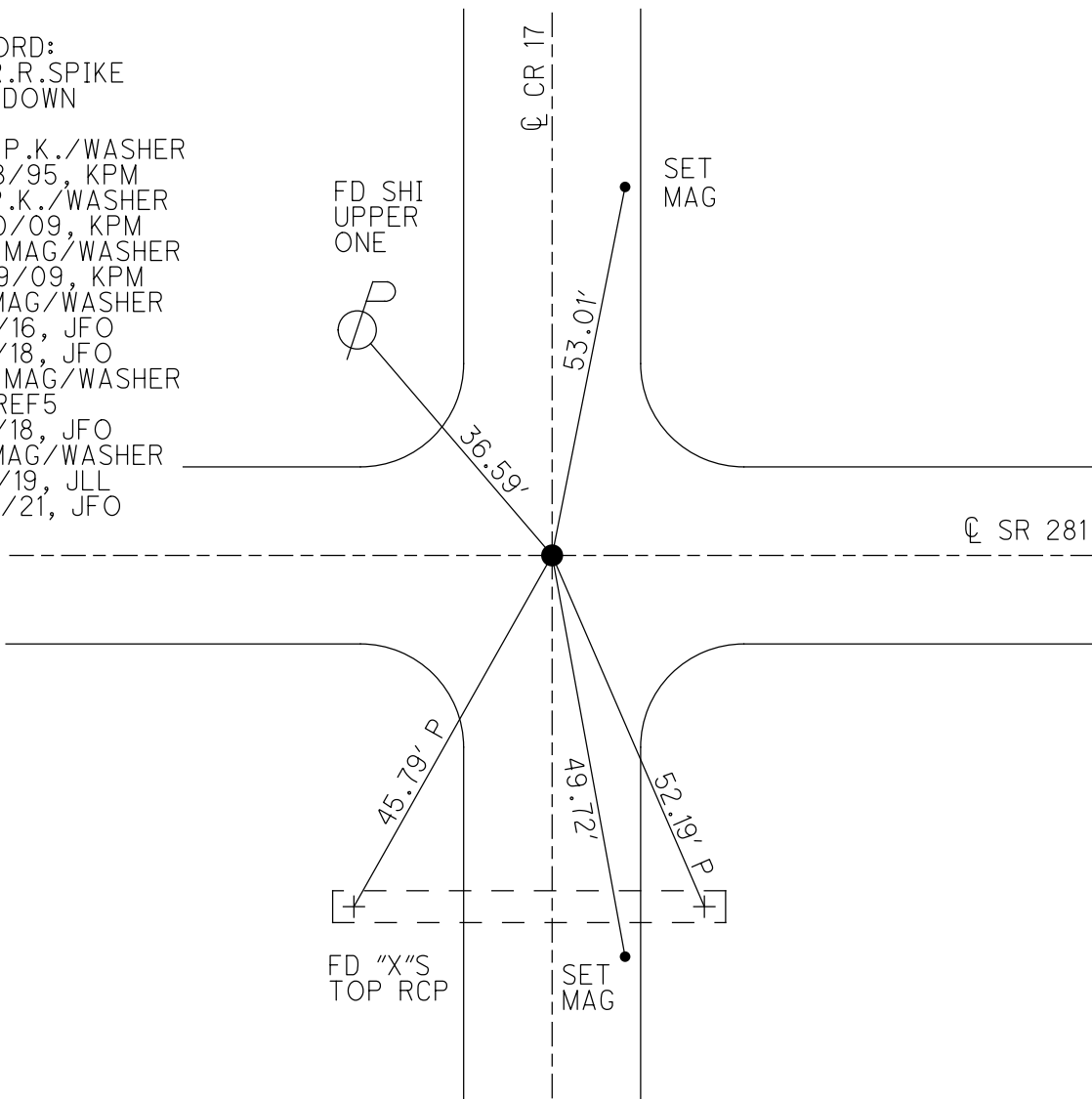
GEOID: NAVD88 2012A

GRID: NORTHING: 593056.696

EASTING: 1503820.722



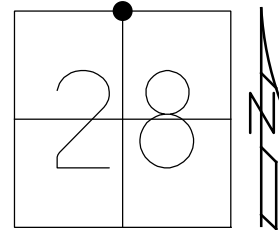
RECORD:
 FD R.R.SPIKE
 1.5" DOWN
 1985
 SET P.K./WASHER
 8/28/95, KPM
 FD P.K./WASHER
 8/20/09, KPM
 SET MAG/WASHER
 10/19/09, KPM
 FD MAG/WASHER
 11/2/16, JFO
 6/7/18, JFO
 SET MAG/WASHER
 NEWREF5
 8/2/18, JFO
 FD MAG/WASHER
 1/10/19, JLL
 4/14/21, JFO



O.D.O.T. DISTRICT 2 SURVEY OFFICE (USE ONLY)

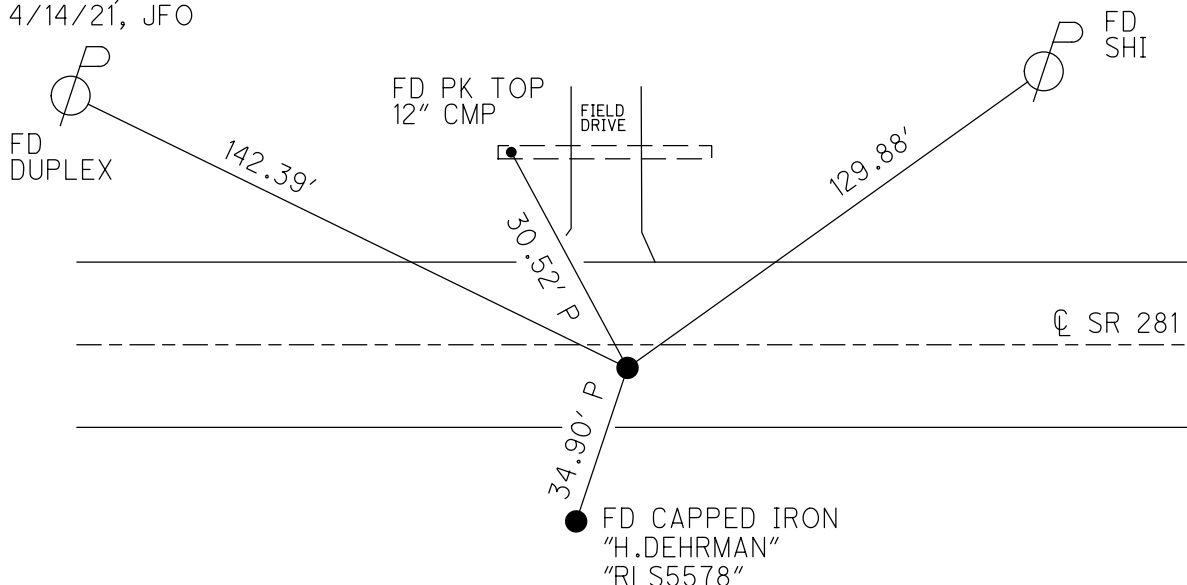
PERSONNEL _____ REFERENCE NO. 6 SHEET 10 OF 20
 NOTES HAGEMEYER DATE 6/7/18 ROUTE SR 281
 H.C. LEU WEATHER CLOUDY COUNTY HENRY
 R.C. HAGEMEYER TEMP. 69° TOWNSHIP FLAT ROCK
 DWG BY NIESE PID 105662 SECTION 28
 T 4 N R 6 E

TYPE MONUMENT MAG/WASHER
 ON SURFACE - ~~BELOW~~ ON
 OFFSET CL PAVEMENT 3.2' ~~LT~~ : RT
7.0' TO RT EDGE PAVEMENT
 STATION: 126+98.79



HORIZ.DATUM: NAD83 2011 GEOID: NAVD88 2012A
 GRID: NORTHING: 593014.845 EASTING: 1506459.925

RECORD:
 FD R.R.SPIKE
 1985
 SET P.K./WASHER
 8/28/95, KPM
 FD P.K./WASHER
 8/20/09, KPM
 SET MAG/WASHER
 10/19/09, KPM
 FD MAG/WASHER
 11/2/16, JFO
 SET MAG/WASHER
 NEWREF6
 8/6/18, JFO
 FD MAG/WASHER
 6/7/18, JLL
 1/10/19, JLL
 4/14/21, JFO



O.D.O.T. DISTRICT 2 SURVEY OFFICE (USE ONLY)

PERSONNEL

REFERENCE NO. 7

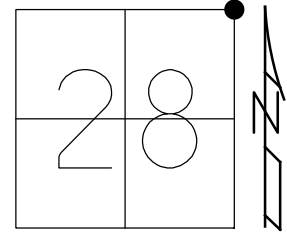
SHEET 11 OF 20

NOTES HAGEMEYER DATE 6/7/18
 H.C. LEU WEATHER CLOUDY
 R.C. HAGEMEYER TEMP. 69°

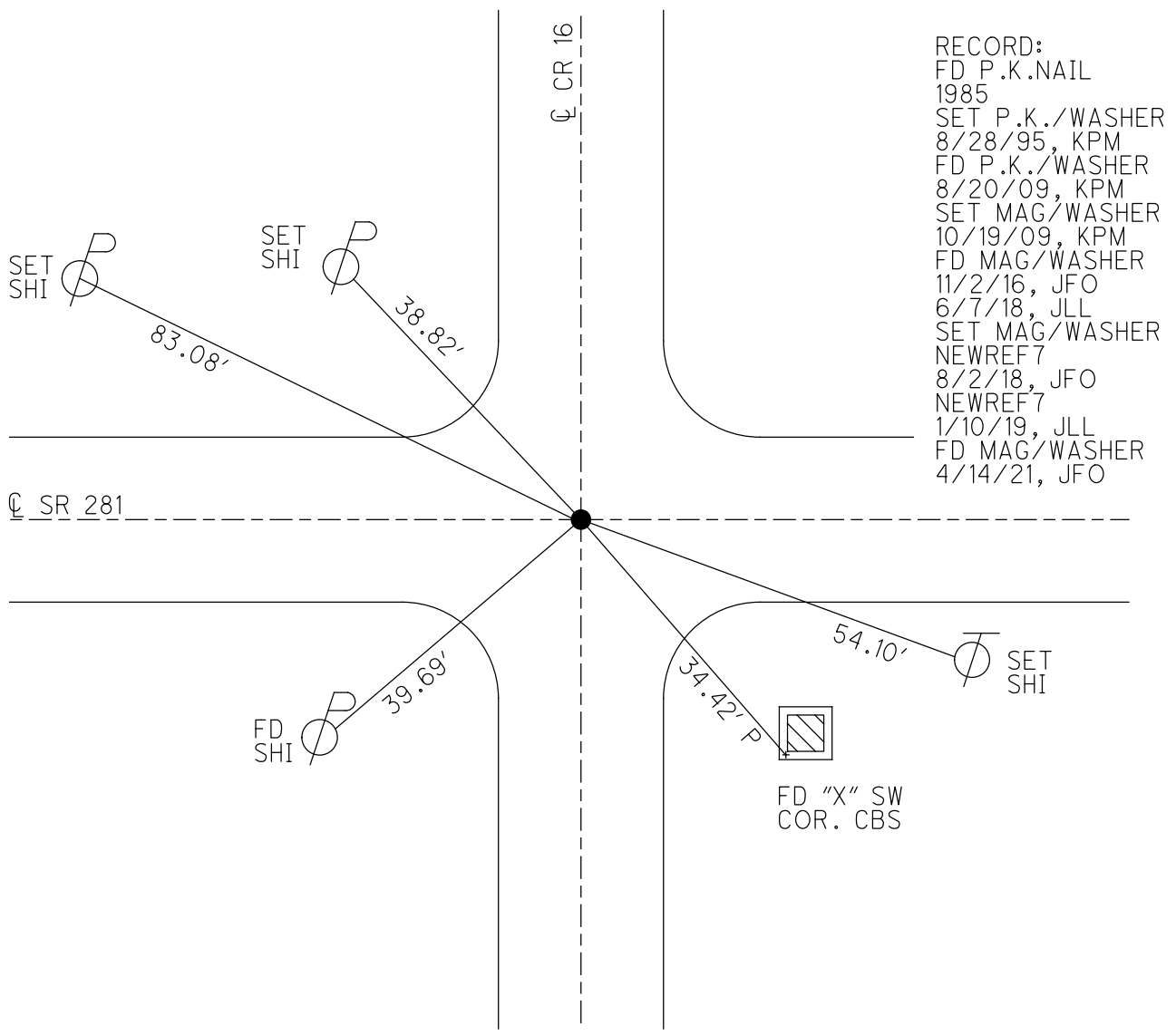
ROUTE SR 281
 COUNTY HENRY
 TOWNSHIP FLAT ROCK
 SECTION 28
 T 4 N R 6 E

DWG BY NIESE PID 102763

TYPE MONUMENT MAG/WASHER
 ON SURFACE - ~~BELOW~~ ON
 OFFSET ☉ PAVEMENT ON LT : RT
9.4' TO RT EDGE PAVEMENT
 STATION: 153+27.69



HORIZ.DATUM: NAD83 2011 GEOID: NAVD88 2012A
 GRID: NORTHING: 593041.706 EASTING: 1509088.706



RECORD:
 FD P.K.NAIL
 1985
 SET P.K./WASHER
 8/28/95, KPM
 FD P.K./WASHER
 8/20/09, KPM
 SET MAG/WASHER
 10/19/09, KPM
 FD MAG/WASHER
 11/2/16, JFO
 6/7/18, JLL
 SET MAG/WASHER
 NEWREF7
 8/2/18, JFO
 NEWREF7
 1/10/19, JLL
 FD MAG/WASHER
 4/14/21, JFO

O.D.O.T. DISTRICT 2 SURVEY OFFICE (USE ONLY)

PERSONNEL _____ REFERENCE NO. 8 SHEET 12 OF 20
 NOTES HAGEMEYER DATE 6-7-18 ROUTE SR 281
 H.C. LEU WEATHER CLOUDY COUNTY HENRY
 R.C. HAGEMEYER TEMP. 68° TOWNSHIP FLAT ROCK
 _____ SECTION 27
 DWG BY JAMES PID 102763 T 4 N R 6 E

TYPE MONUMENT MAG/WASHER

ON SURFACE - ~~BELOW~~ ON

OFFSET \odot PAVEMENT 5' ~~ET~~ : RT

4.8' TO RT EDGE PAVEMENT

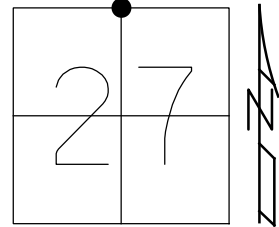
STATION: 179+70.17

HORZ. DATUM: NAD83 2011

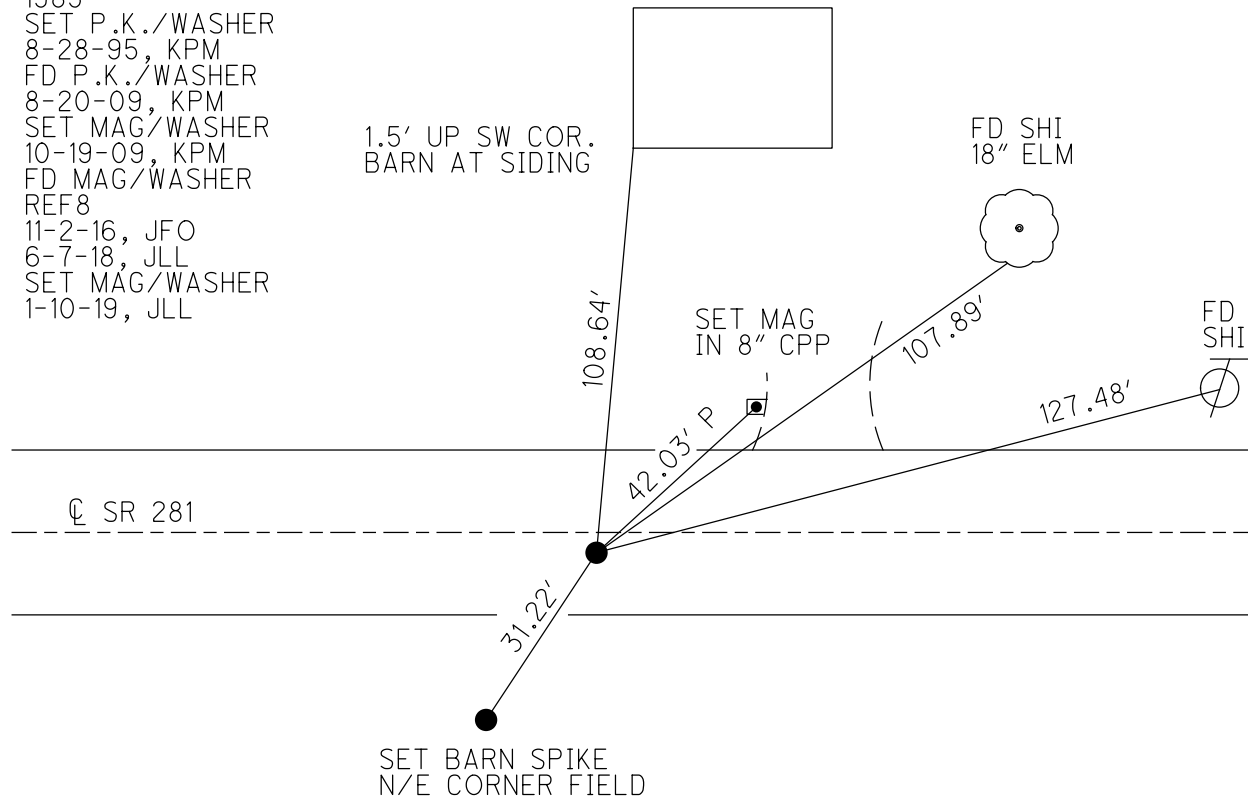
GEOID: NAVD88 2012A

GRID: NORTHING: 593009.989

EASTING: 1511730.975



RECORD:
 FD P.K./WASHER
 1985
 SET P.K./WASHER
 8-28-95, KPM
 FD P.K./WASHER
 8-20-09, KPM
 SET MAG/WASHER
 10-19-09, KPM
 FD MAG/WASHER
 REF8
 11-2-16, JFO
 6-7-18, JLL
 SET MAG/WASHER
 1-10-19, JLL



O.D.O.T. DISTRICT 2 SURVEY OFFICE (USE ONLY)

PERSONNEL

REFERENCE NO. 9

SHEET 13 OF 20

NOTES HAGEMEYER

DATE 6-7-18

ROUTE SR 281

H.C. LEU

WEATHER CLOUDY

COUNTY HENRY

R.C. HAGEMEYER

TEMP. 68°

TOWNSHIP FLAT ROCK

SECTION 27

DWG BY JAMES PID 102763

T 4 N R 6 E

TYPE MONUMENT MAG/WASHER

ON SURFACE - ~~BELOW~~ ON

OFFSET CL PAVEMENT 5.0', 3.2' LT CR 15 ~~LT~~ : RT

5.3' TO RT EDGE PAVEMENT

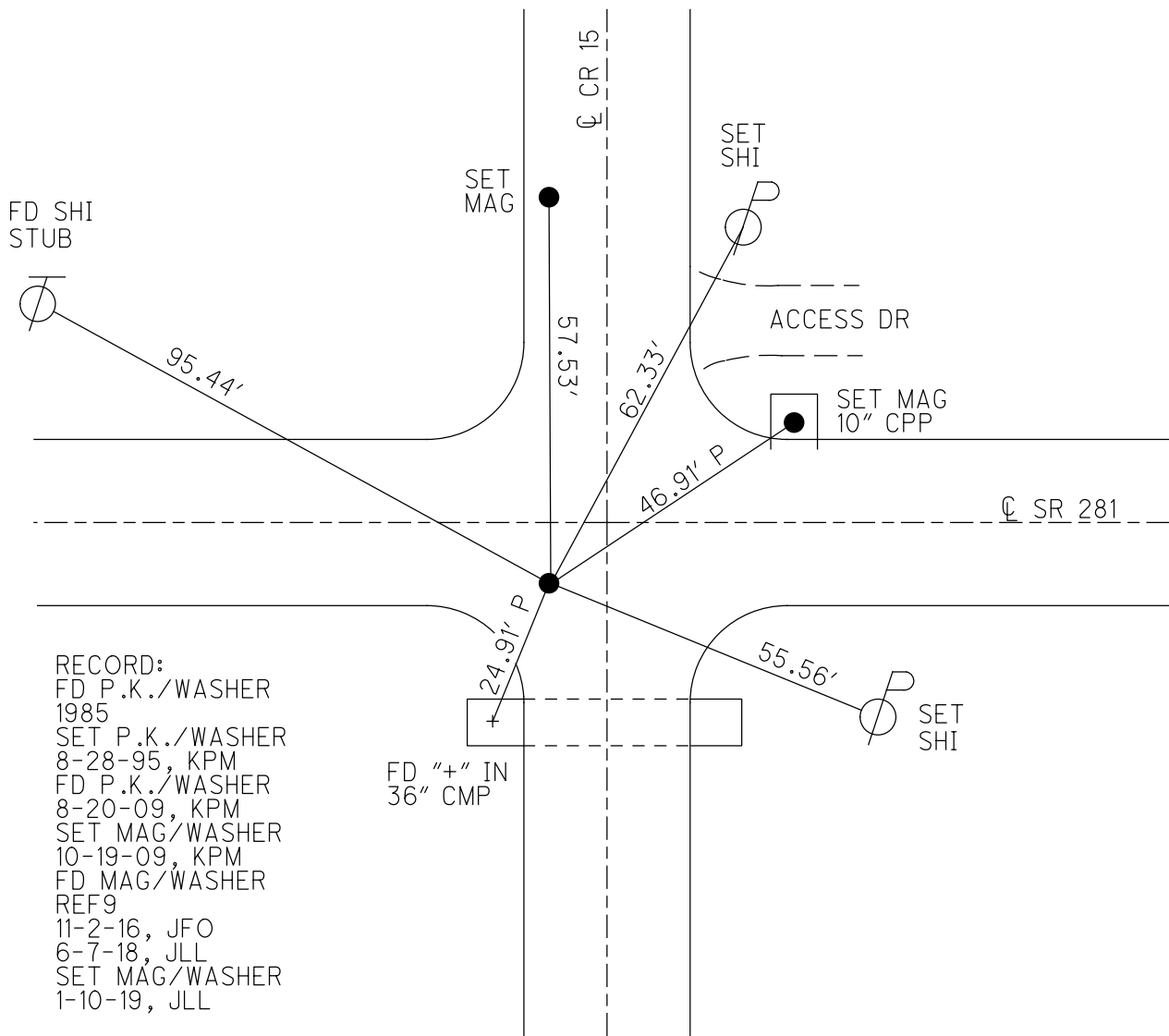
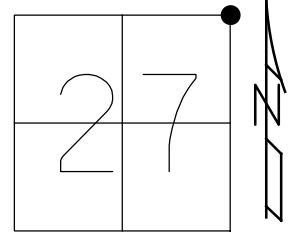
STATION: 206+13.89

HORZ. DATUM: NAD83 2011

GEOID: NAVD88 2012A

GRID: NORTHING: 592983.316

EASTING: 1514374.569

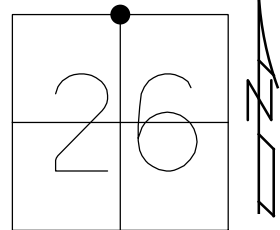


- RECORD:
 FD P.K./WASHER
 1985
 SET P.K./WASHER
 8-28-95, KPM
 FD P.K./WASHER
 8-20-09, KPM
 SET MAG/WASHER
 10-19-09, KPM
 FD MAG/WASHER
 REF9
 11-2-16, JFO
 6-7-18, JLL
 SET MAG/WASHER
 1-10-19, JLL

O.D.O.T. DISTRICT 2 SURVEY OFFICE (USE ONLY)

PERSONNEL _____ REFERENCE NO. 10 SHEET 14 OF 20
 NOTES HAGEMEYER DATE 6-7-18 ROUTE SR 281
 H.C. LEU WEATHER CLOUDY COUNTY HENRY
 R.C. HAGEMEYER TEMP. 64° TOWNSHIP FLAT ROCK
 DWG BY JAMES PID 102763 SECTION 26
 T 4 N R 6 E

TYPE MONUMENT MAG/WASHER
 ON SURFACE - ~~BELOW~~ ON
 OFFSET \varnothing PAVEMENT 8.3' ~~LT~~ : RT
2.0' TO RT EDGE PAVEMENT
 STATION: 232+32.13



HORIZ.DATUM: NAD83 2011 GEOID: NAVD88 2012A
 GRID: NORTHING: 592940.514 EASTING: 1516992.456

- RECORD:
 FD P.K./WASHER
 1985
 SET P.K./WASHER
 8-28-95, KPM
 FD P.K./WASHER
 8-20-09, KPM
 SET MAG/WASHER
 10-26-09, KPM
 FD MAG/WASHER
 REF10
 11-2-16, JFO
 6-7-18, JLL
 SET MAG/WASHER
 1-10-18, JLL

SET SHI
 CLUMP 6 ELMS



37.19'

MB SET TACK
 RES 14-477

38.34'

\varnothing SR 281

21.83' P

36.80' P

92.10'

FD "X"s
 TOP CMP

\varnothing SET
 SHI

O.D.O.T. DISTRICT 2 SURVEY OFFICE (USE ONLY)

PERSONNEL

REFERENCE NO. 11

SHEET 15 OF 20

NOTES HAGEMEYER

DATE 6-7-18

ROUTE SR 281

H.C. LEU

WEATHER CLOUDY

COUNTY HENRY

R.C. HAGEMEYER

TEMP. 64°

TOWNSHIP FLAT ROCK

SECTION 26

DWG BY JAMES

PID 102763

T 4 N R 6 E

TYPE MONUMENT MAG/WASHER

ON SURFACE - ~~BELOW~~ ON

OFFSET \bar{C} PAVEMENT 3.3', 5.5' L CR 14 LT : ~~RT~~

6.4' TO LT EDGE PAVEMENT

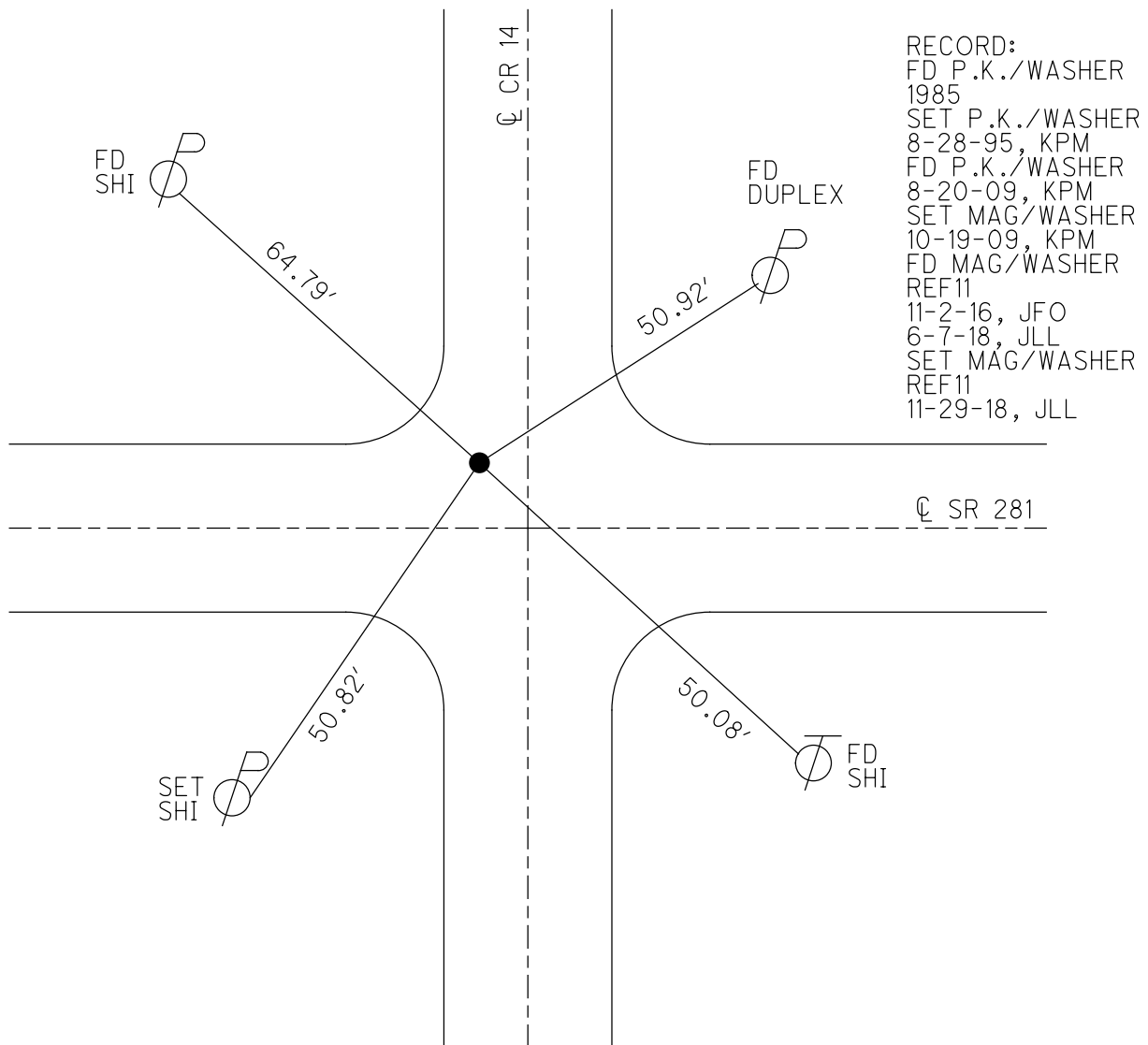
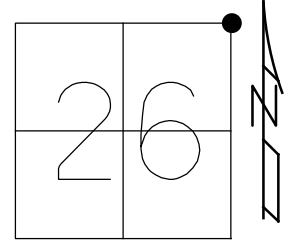
STATION: 258+49.04±

HORZ.DATUM: NAD83 2011

GEOID: NAVD88 2012A

GRID: NORTHING: 592929.156

EASTING: 1519609.719



RECORD:
 FD P.K./WASHER
 1985
 SET P.K./WASHER
 8-28-95, KPM
 FD P.K./WASHER
 8-20-09, KPM
 SET MAG/WASHER
 10-19-09, KPM
 FD MAG/WASHER
 REF11
 11-2-16, JFO
 6-7-18, JLL
 SET MAG/WASHER
 REF11
 11-29-18, JLL

O.D.O.T. DISTRICT 2 SURVEY OFFICE (USE ONLY)

PERSONNEL _____ REFERENCE NO. 12 SHEET 16 OF 20
 NOTES HAGEMEYER DATE 6-7-18 ROUTE SR 281
 H.C. LEU WEATHER CLOUDY COUNTY HENRY
 R.C. HAGEMEYER TEMP. 63° TOWNSHIP FLAT ROCK
 _____ SECTION 25
 DWG BY JAMES PID 102763 T 4 N R 6 E

TYPE MONUMENT MAG/WASHER

ON SURFACE - ~~BELOW~~ ON _____

OFFSET CL PAVEMENT 1.4' ~~RT~~ : RT

8.6' TO RT EDGE PAVEMENT

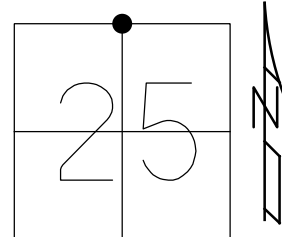
STATION: 285+00.24

HORZ. DATUM: NAD83 2011

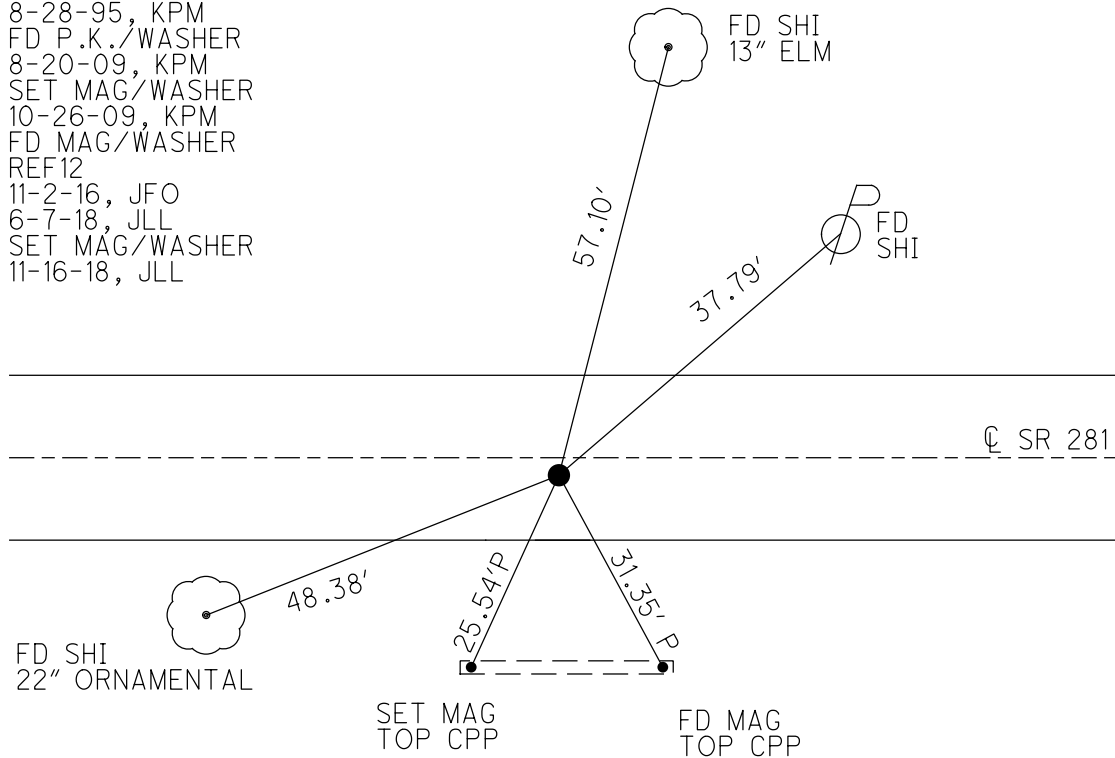
GEOID: NAVD88 2012A

GRID: NORTHING: 592915.493

EASTING: 1522260.506



RECORD:
 FD P.K./WASHER
 1985
 SET P.K./WASHER
 8-28-95, KPM
 FD P.K./WASHER
 8-20-09, KPM
 SET MAG/WASHER
 10-26-09, KPM
 FD MAG/WASHER
 REF12
 11-2-16, JFO
 6-7-18, JLL
 SET MAG/WASHER
 11-16-18, JLL



O.D.O.T. DISTRICT 2 SURVEY OFFICE (USE ONLY)

PERSONNEL

REFERENCE NO. 12 A

SHEET 17 OF 20

NOTES CANTERBURY

DATE 5-19-98

ROUTE SR 281

H.C. ROUSOS

WEATHER SUNNY

COUNTY HENRY

R.C. HUSS

TEMP. +80°

TOWNSHIP FLAT ROCK

DWG BY JAMES PID 102763

SECTION 25

T 4 N R 6 E

TYPE MONUMENT P.K./WASHER

ON SURFACE - ~~BELOW~~ ON

OFFSET ☉ PAVEMENT ON, 15.4' SR 108 LT : RT

- TO - EDGE PAVEMENT

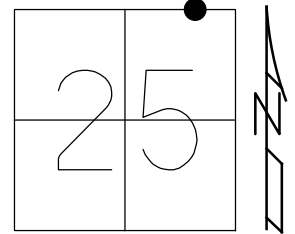
STATION: 301+48.8

HORIZ.DATUM: NAD83 2011

GEOID: NAVD88 2012A

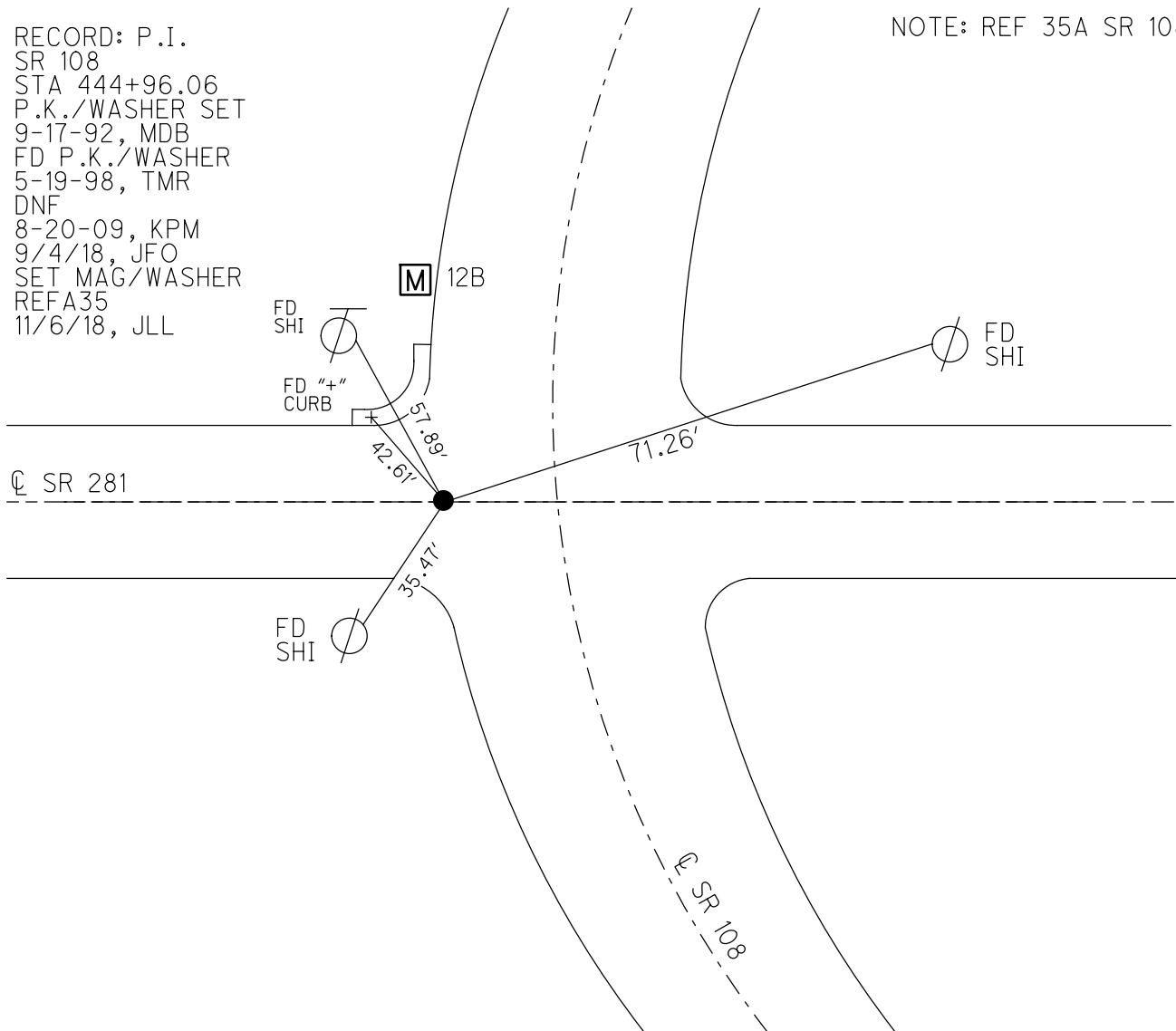
GRID: NORTHING: 592911.473

EASTING: 1523949.701



RECORD: P.I.
 SR 108
 STA 444+96.06
 P.K./WASHER SET
 9-17-92, MDB
 FD P.K./WASHER
 5-19-98, TMR
 DNF
 8-20-09, KPM
 9/4/18, JFO
 SET MAG/WASHER
 REFA35
 11/6/18, JLL

NOTE: REF 35A SR 108



O.D.O.T. DISTRICT 2 SURVEY OFFICE (USE ONLY)

PERSONNEL

REFERENCE NO. 12 B

SHEET 18 OF 20

NOTES CANTERBURY

DATE 5-19-98

ROUTE SR 281

H.C. ROUSOS

WEATHER SUNNY

COUNTY HENRY

R.C. HUSS

TEMP. +80°

TOWNSHIP FLAT ROCK

SECTION 25

DWG BY JAMES PID 102763

T 4 N R 6 E

TYPE MONUMENT MONBOX

ON SURFACE - ~~BELOW~~ ON

OFFSET \odot PAVEMENT - LT : RT

 TO EDGE PAVEMENT

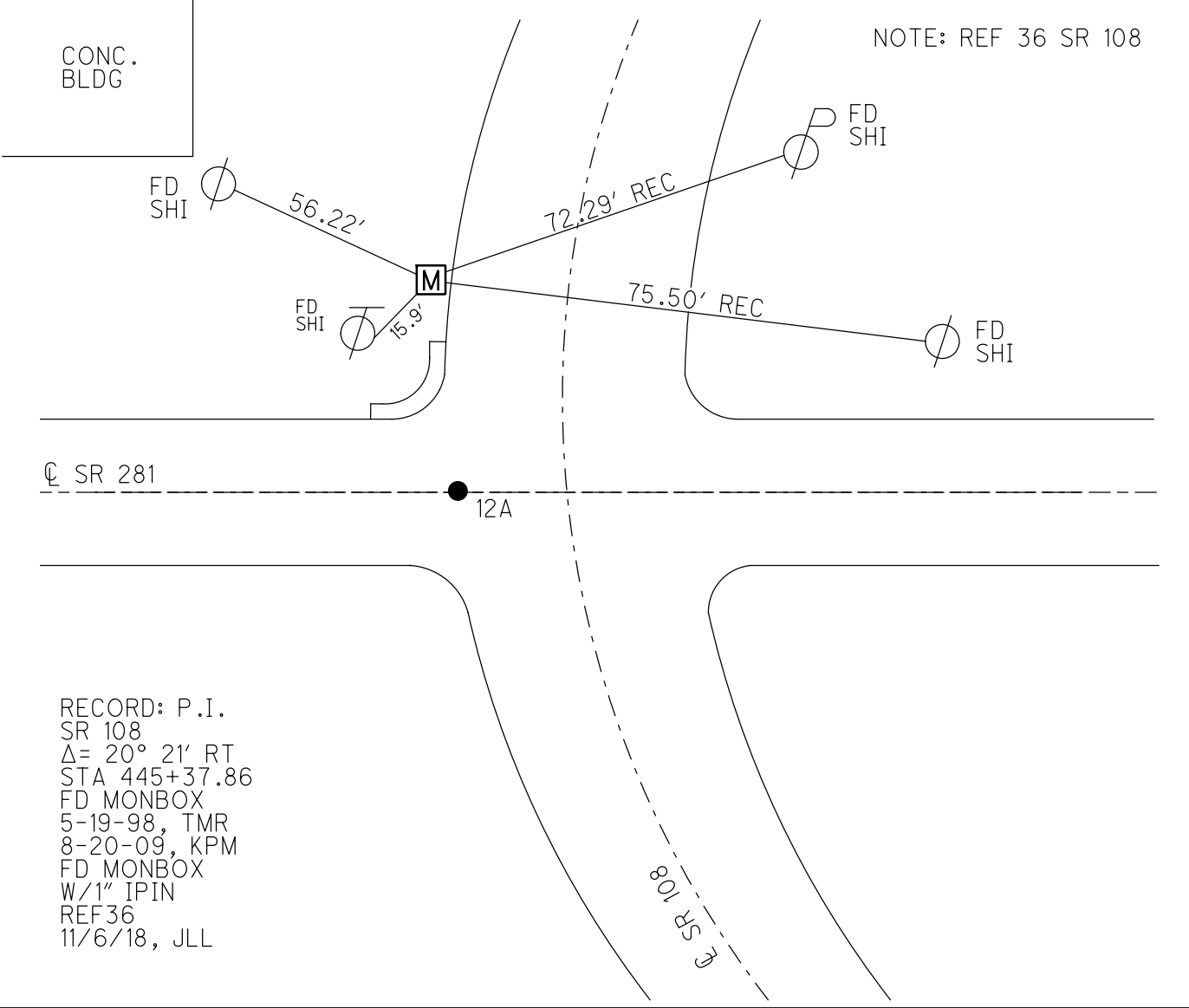
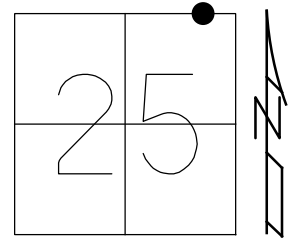
STATION: 301+48.8

HORZ.DATUM: NAD83 2011

GEOID: NAVD88 2012A

GRID: NORTHING: 592978.643

EASTING: 1523934.676



RECORD: P.I.
 SR 108
 $\Delta = 20^\circ 21' RT$
 STA 445+37.86
 FD MONBOX
 5-19-98, TMR
 8-20-09, KPM
 FD MONBOX
 W/1" IPIN
 REF36
 11/6/18, JLL

O.D.O.T. DISTRICT 2 SURVEY OFFICE (USE ONLY)

PERSONNEL

REFERENCE NO. 13

SHEET 19 OF 20

NOTES O'DONNELL

DATE 9/4/18

ROUTE SR 281

H.C. O'DONNELL

WEATHER SUNNY

COUNTY HENRY

R.C. MILLER

TEMP. 74°

TOWNSHIP FLATROCK

DWG BY JAMES

PID CHIP_2

SECTION 25

T 4 N R 7 E

TYPE MONUMENT SM.R.R.SPIKE

~~ON SURFACE~~ - BELOW 2"

OFFSET Q PAVEMENT ON _____ LT : RT

10.4' TO LT EDGE PAVEMENT

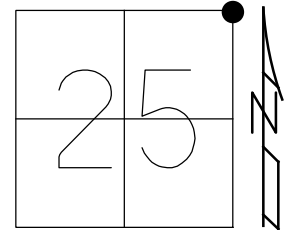
STATION: 311+54.80

HORZ.DATUM: NAD83 2011

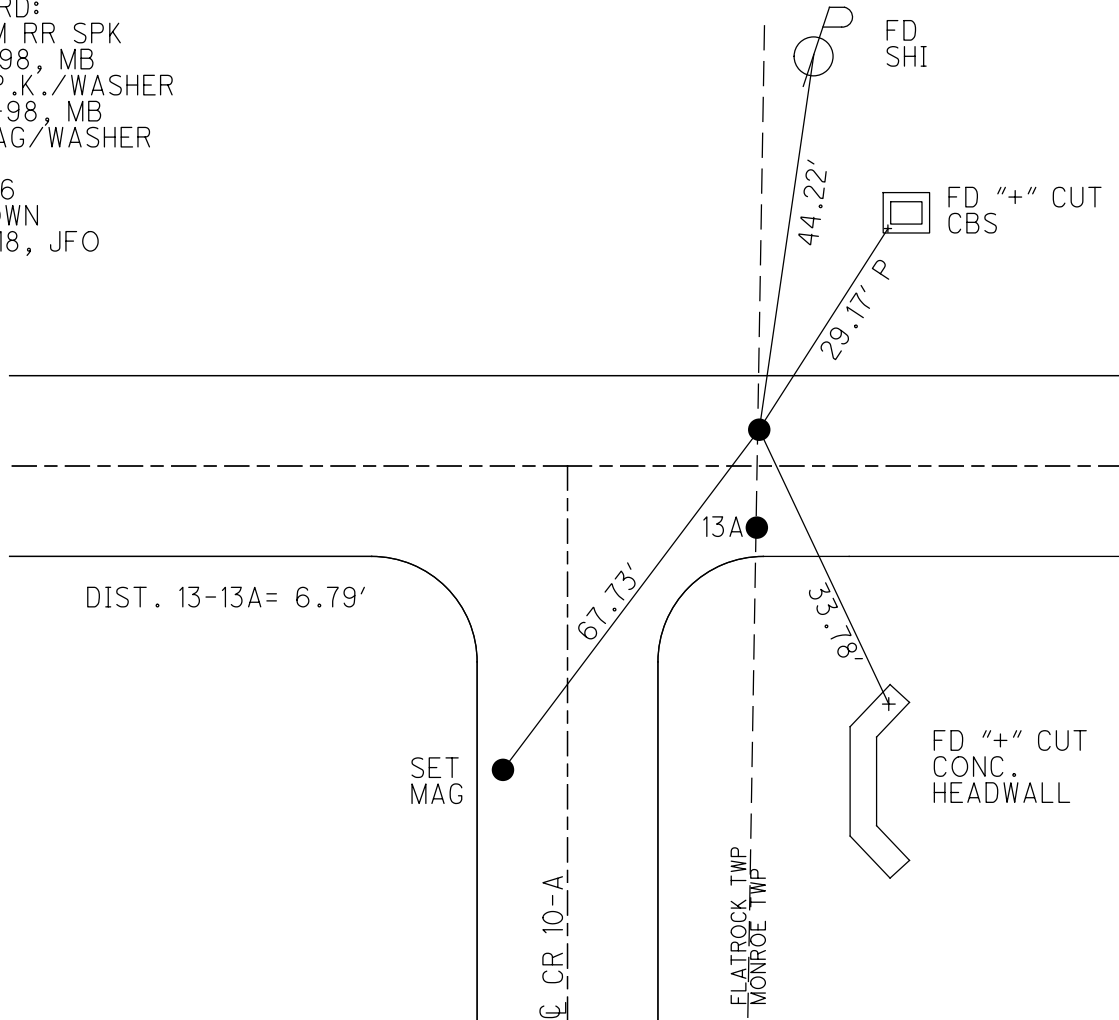
GEOID: NAVD88 2012A

GRID: NORTHING: 592909.261

EASTING: 1524915.154



RECORD:
 FD SM RR SPK
 8-18-98, MB
 SET P.K./WASHER
 9-28-98, MB
 FD MAG/WASHER
 REF13
 11-2-16
 2" DOWN
 9/4/18, JFO



O.D.O.T. DISTRICT 2 SURVEY OFFICE (USE ONLY)

PERSONNEL

REFERENCE NO. 13 A

SHEET 20 OF 20

NOTES O'DONNELL

DATE 9/4/18

ROUTE SR 281

H.C. O'DONNELL

WEATHER SUNNY

COUNTY HENRY

R.C. MILLER

TEMP. 74°

TOWNSHIP FLATROCK

SECTION 25

DWG BY JAMES PID CHIP_2

T 4 N R 7 E

TYPE MONUMENT P.K.NAIL

ON SURFACE - ~~BELOW~~ ON

OFFSET 6.8' LT : RT

4.3' TO RT EDGE PAVEMENT

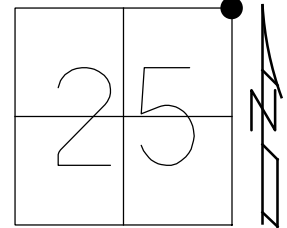
STATION: 311+54.55

HORZ.DATUM: NAD83 2011

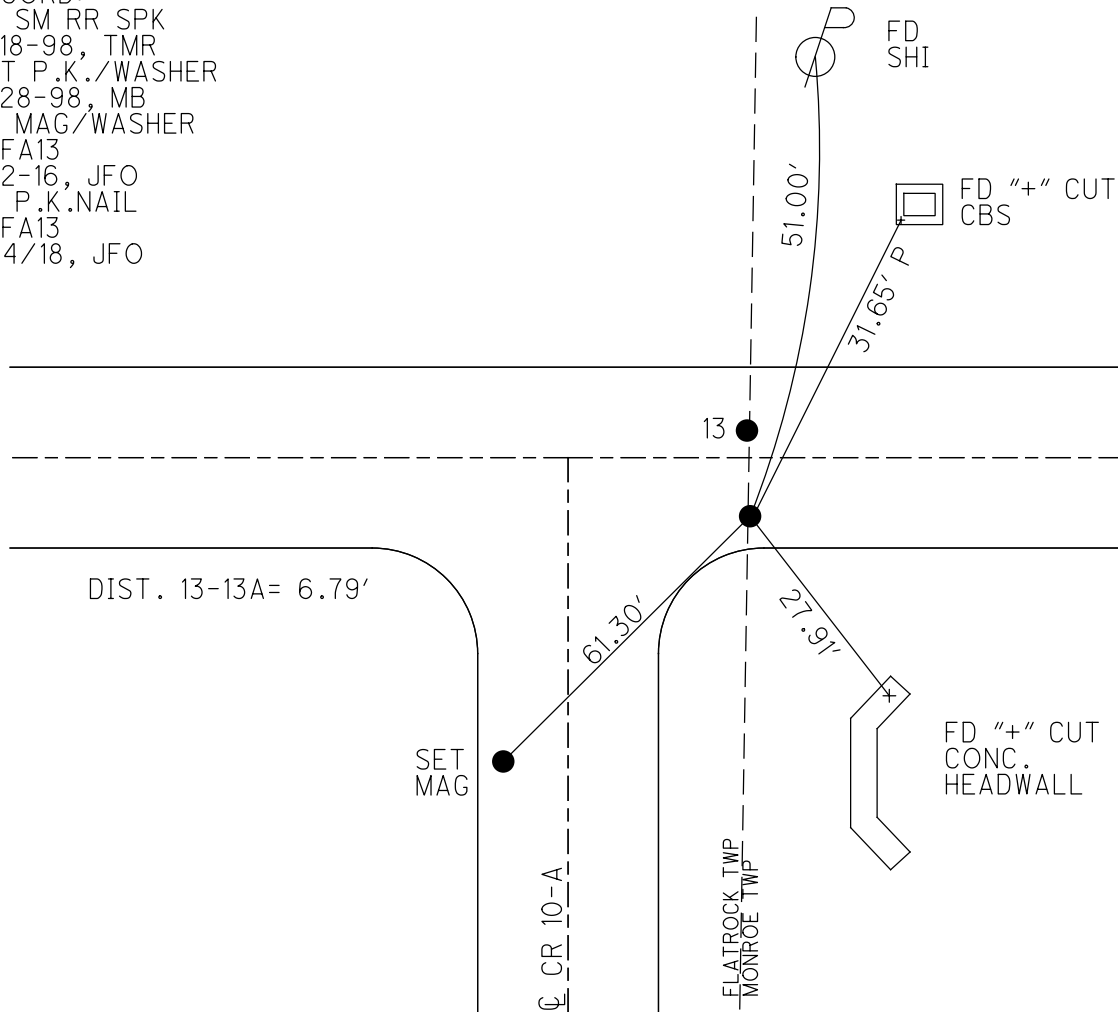
GEOID: NAVD88 2012A

GRID: NORTHING: 592902.470

EASTING: 1524914.835



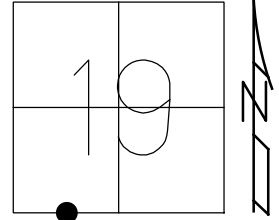
RECORD:
 FD SM RR SPK
 8-18-98, TMR
 SET P.K./WASHER
 9-28-98, MB
 FD MAG/WASHER
 REFA13
 11-2-16, JFO
 FD P.K.NAIL
 REFA13
 9/4/18, JFO



O.D.O.T. DISTRICT 2 SURVEY OFFICE (USE ONLY)

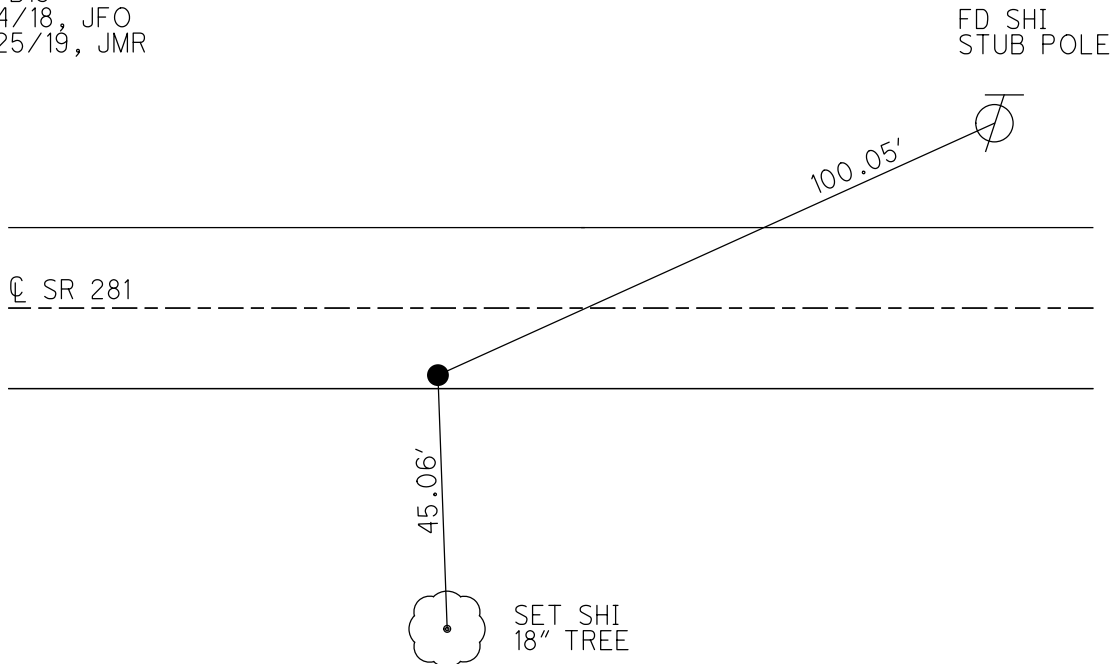
PERSONNEL _____ REFERENCE NO. 13 B SHEET 1 OF 34
 NOTES MILLER DATE 9/4/18 ROUTE SR 281
 H.C. O'DONNELL WEATHER SUNNY COUNTY HENRY
 R.C. MILLER TEMP. 74° TOWNSHIP MONROE
 DWG BY NIESE PID CHIP_2 SECTION 19
 T 4 N R 7 E

TYPE MONUMENT SM.R.R. SPIKE
 ON SURFACE - ~~BELOW~~ 5"
 OFFSET \odot PAVEMENT 8.4' ~~LT~~ : RT
1.93' TO RT EDGE PAVEMENT
 STATION: 324+54



HORZ.DATUM: NAD83(2011) GEOID: 2012A
 GRID: NORTHING: 592882.933 EASTING: 1526249.468

RECORD:
 STA 324+84.4
 1/4-1/4 SEC 19
 FD SM R.R. SPIKE
 1 1/2" DOWN
 8/18/98, MB
 SET P.K./WASHER
 9/28/98, MB
 FD SM.R.R.SPIKE
 5" DOWN
 REFB13
 9/4/18, JFO
 7/25/19, JMR



O.D.O.T. DISTRICT 2 SURVEY OFFICE (USE ONLY)

PERSONNEL

REFERENCE NO. 14

SHEET 2 OF 34

NOTES HUSS

DATE 8/18/98

ROUTE SR 281

H.C. BARNHISEL

WEATHER FAIR

COUNTY HENRY

R.C. ROUSOS

TEMP. 82°

TOWNSHIP MONROE

SECTION 19

DWG BY NIESE PID CHIP_2

T 4 N R 7 E

TYPE MONUMENT SMALL R.R. SPIKE

ON SURFACE - ~~BELOW~~ ON

OFFSET \odot PAVEMENT 7.8' ~~LT~~ : RT

2.9' TO RT EDGE PAVEMENT

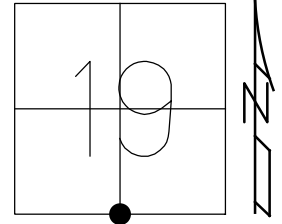
STATION: 337+74

HORZ.DATUM: NAD83(2011)

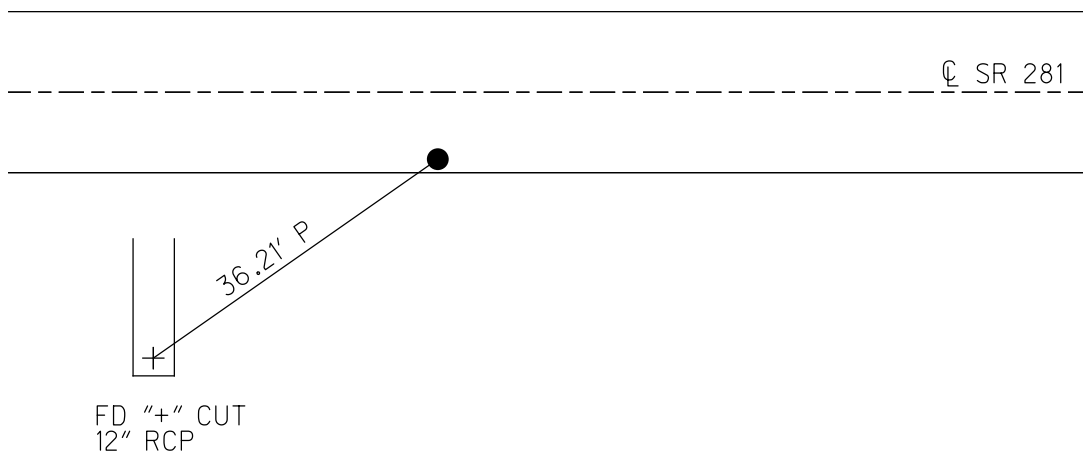
GEOID: 2012A

GRID: NORTHING: 592863.468

EASTING: 1527569.321



RECORD:
STA 338+04.5
FD SM.R.R.SPIKE
8/18/98, MB
SET P.K./WASHER
9/29/98, MB
FD P.K./WASHER
REF14
9/4/18, JFO
7/25/19, JMR



O.D.O.T. DISTRICT 2 SURVEY OFFICE (USE ONLY)

PERSONNEL

REFERENCE NO. 14 A

SHEET 3 OF 34

NOTES HUSS DATE 8/18/98

ROUTE SR 281

H.C. BARNHEISEL WEATHER FAIR

COUNTY HENRY

R.C. ROUSOS TEMP. 82°

TOWNSHIP MONROE

SECTION 19

DWG BY NIESE PID CHIP_2

T 4 N R 7 E

TYPE MONUMENT SM.R.R.SPIKE

ON SURFACE - ~~BELOW~~ ON

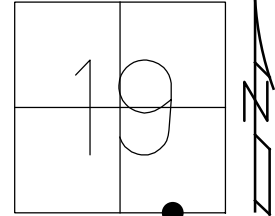
OFFSET ☉ PAVEMENT 6.5' ~~±~~ : RT

4.1' TO RT EDGE PAVEMENT

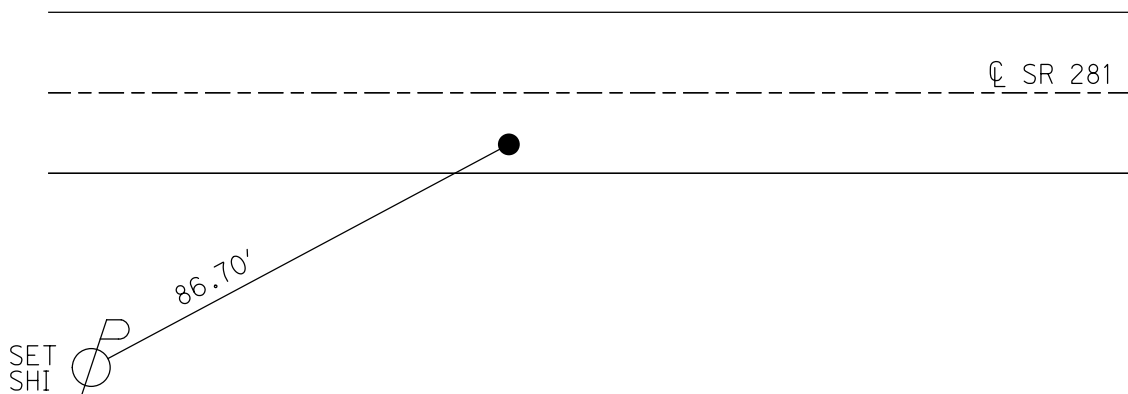
STATION: 350+99

HORZ.DATUM: NAD83(2011) GEOID: 2012A

GRID: NORTHING: 592844.073 EASTING: 1528893.769



RECORD:
351+29.4
1/4-1/4 SEC 19
FD P.K./WASHER
REFA14
9/4/18, JFO
7/25/19, JMR



O.D.O.T. DISTRICT 2 SURVEY OFFICE (USE ONLY)

PERSONNEL

REFERENCE NO. 15

SHEET 4 OF 34

NOTES MILLER DATE 9/4/18

H.C. O'DONNELL WEATHER SUNNY

R.C. MILLER TEMP. 85°

ROUTE SR 281

COUNTY HENRY

TOWNSHIP MONROE

SECTION 20

DWG BY NIESE PID CHIP_2

T 4 N R 7 E

TYPE MONUMENT LG.R.R.SPIKE

~~ON SURFACE~~ - BELOW 5"

OFFSET ☉ PAVEMENT 5.4' ~~LT~~ : RT

- TO - EDGE PAVEMENT

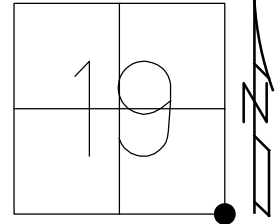
STATION: 364+24

HORZ.DATUM: NAD83(2011)

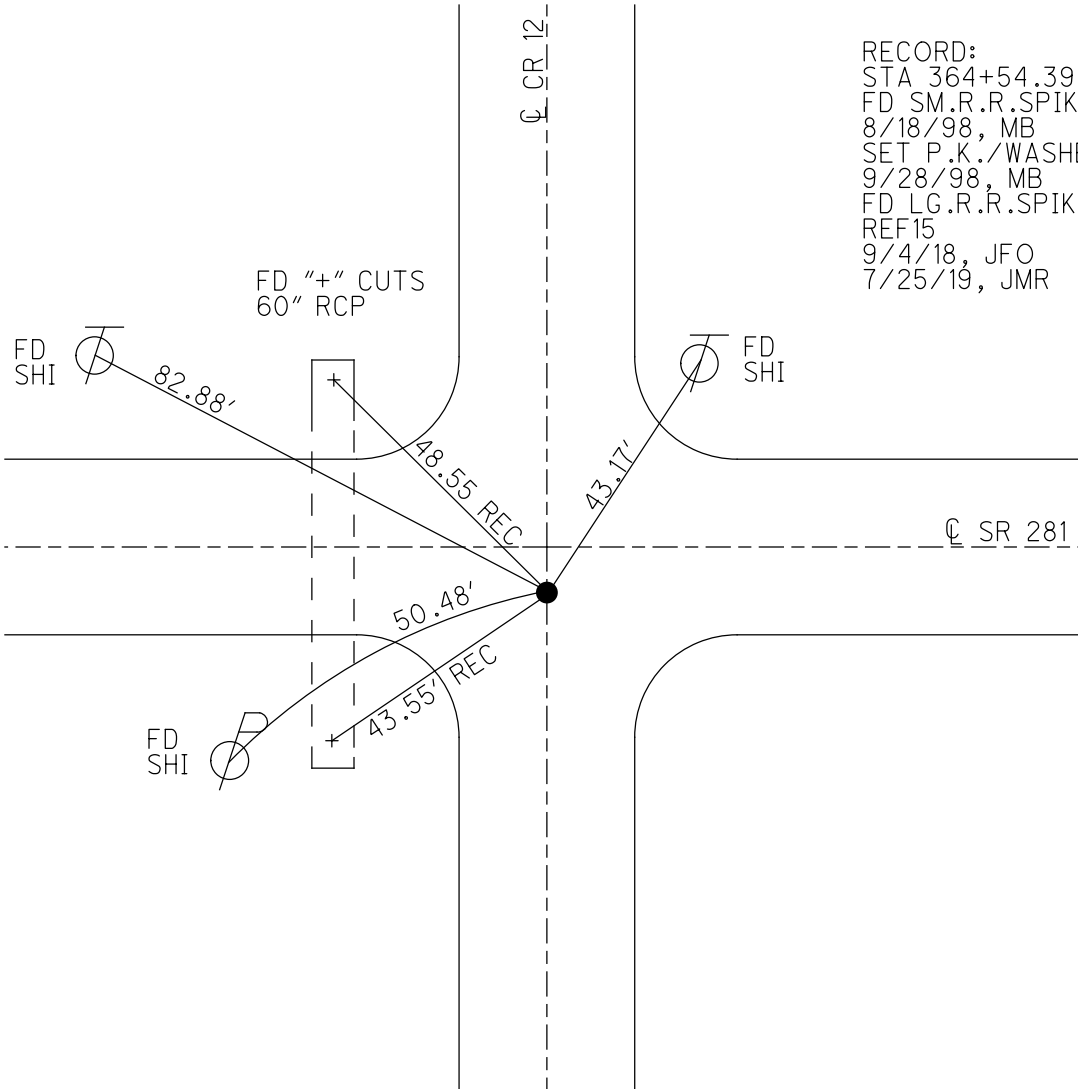
GEOID: 2012A

GRID: NORTHING: 592825.025

EASTING: 1530281.756



RECORD:
 STA 364+54.39
 FD SM.R.R.SPIKE
 8/18/98, MB
 SET P.K./WASHER
 9/28/98, MB
 FD LG.R.R.SPIKE
 REF 15
 9/4/18, JFO
 7/25/19, JMR

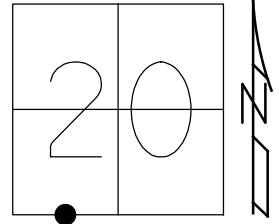


O.D.O.T. DISTRICT 2 SURVEY OFFICE (USE ONLY)

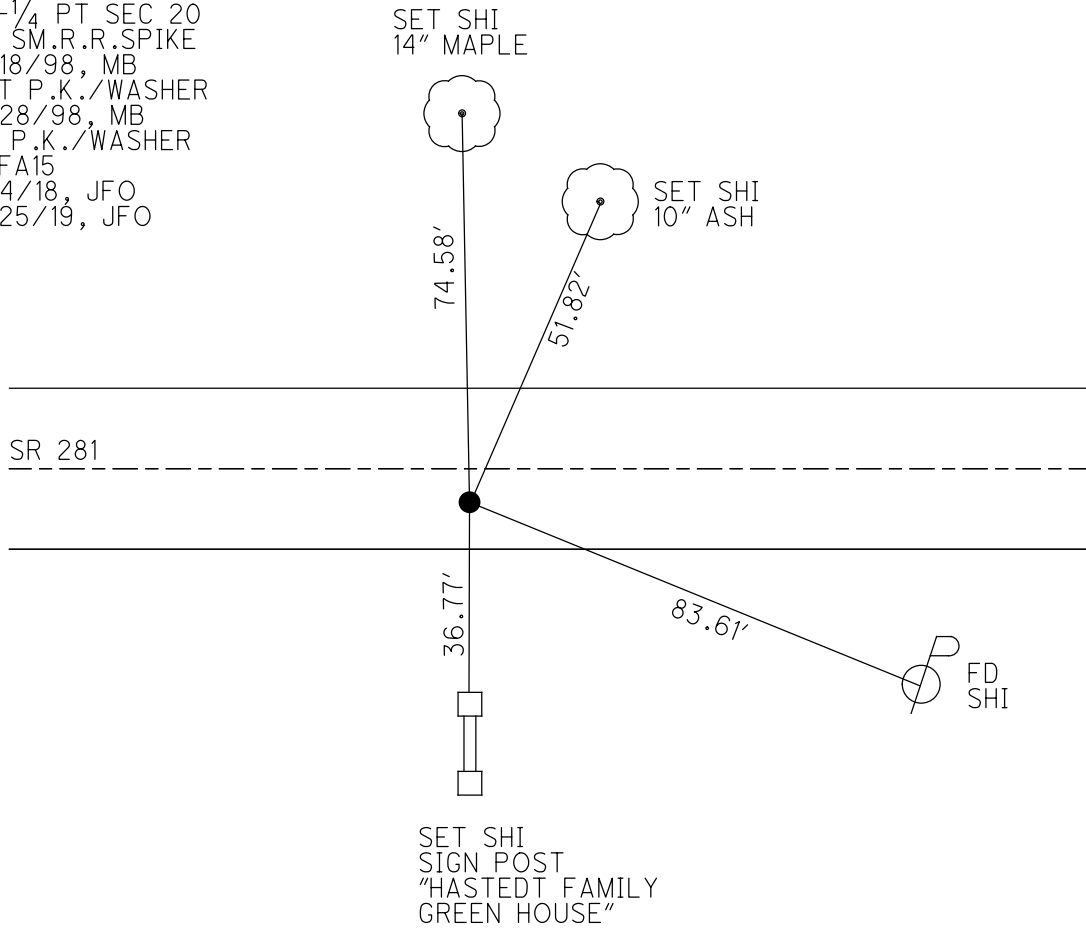
PERSONNEL _____ REFERENCE NO. 15 A SHEET 5 OF 34
 NOTES HUSS DATE 8/18/98 ROUTE SR 281
 H.C. BARNHISEL WEATHER FAIR COUNTY HENRY
 R.C. ROUSOS TEMP. 84° TOWNSHIP MONROE
 DWG BY NIESE PID CHIP_2 SECTION 20
 T 4 N R 7 E

TYPE MONUMENT SM.R.R.SPIKE
 ON SURFACE - ~~BELOW~~ ON
 OFFSET C PAVEMENT 4.6' ~~LT~~ : RT
5.8' TO RT EDGE PAVEMENT
 STATION: 377+38

HORZ.DATUM: NAD83(2011) GEOID: 2012A
 GRID: NORTHING: 592818.577 EASTING: 1531532.834



RECORD:
 STA 377+69.10
 1/4-1/4 PT SEC 20
 FD SM.R.R.SPIKE
 8/18/98, MB
 SET P.K./WASHER
 9/28/98, MB
 FD P.K./WASHER
 REFA15
 9/4/18, JFO
 7/25/19, JFO

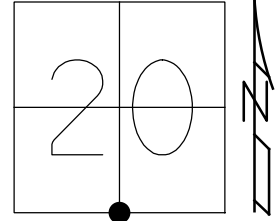


O.D.O.T. DISTRICT 2 SURVEY OFFICE (USE ONLY)

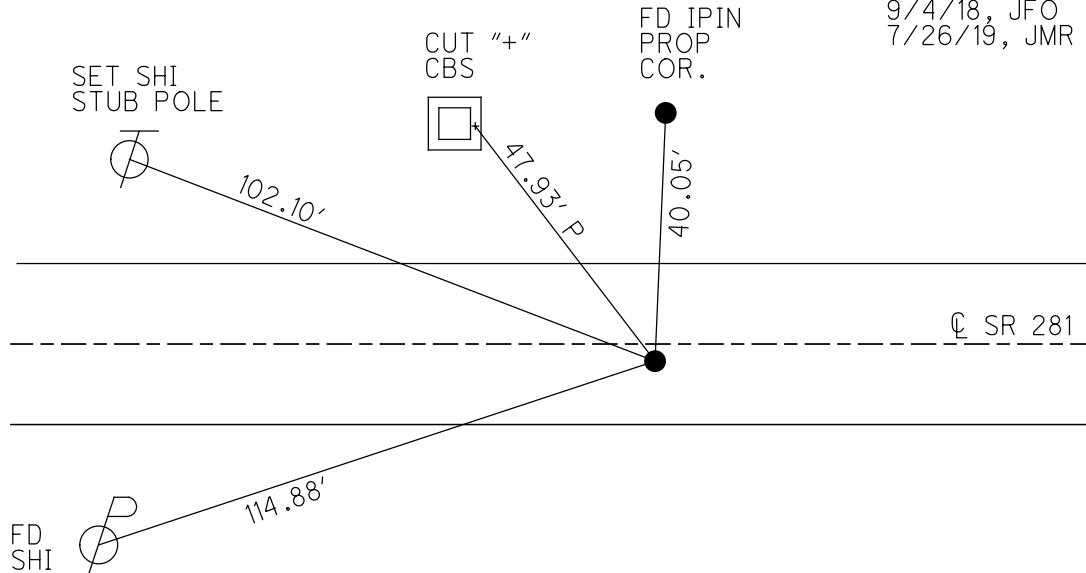
PERSONNEL _____ REFERENCE NO. 16 SHEET 6 OF 34
 NOTES HUSS DATE 8/18/98 ROUTE SR 281
 H.C. BARNHISEL WEATHER FAIR COUNTY HENRY
 R.C. ROUSOS TEMP. 84° TOWNSHIP MONROE
 DWG BY NIESE PID CHIP_2 SECTION 20
 T 4 N R 7 E

TYPE MONUMENT SM.R.R.SPIKE
 ON SURFACE - ~~BELOW~~ ON
 OFFSET C PAVEMENT 2.7' ~~RT~~ : RT
8.4' TO RT EDGE PAVEMENT
 STATION: 390+54

HORZ.DATUM: NAD83(2011) GEOID: 2012A
 GRID: NORTHING: 592812.011 EASTING: 1532846.974



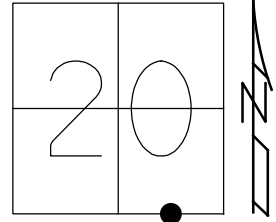
RECORD:
 STA 390+83.6
 FD SM.R.R.SPIKE
 8/18/98, MB
 SET P.K./WASHER
 9/28/98, MB
 FD P.K./WASHER
 REF16
 9/4/18, JFO
 7/26/19, JMR



O.D.O.T. DISTRICT 2 SURVEY OFFICE (USE ONLY)

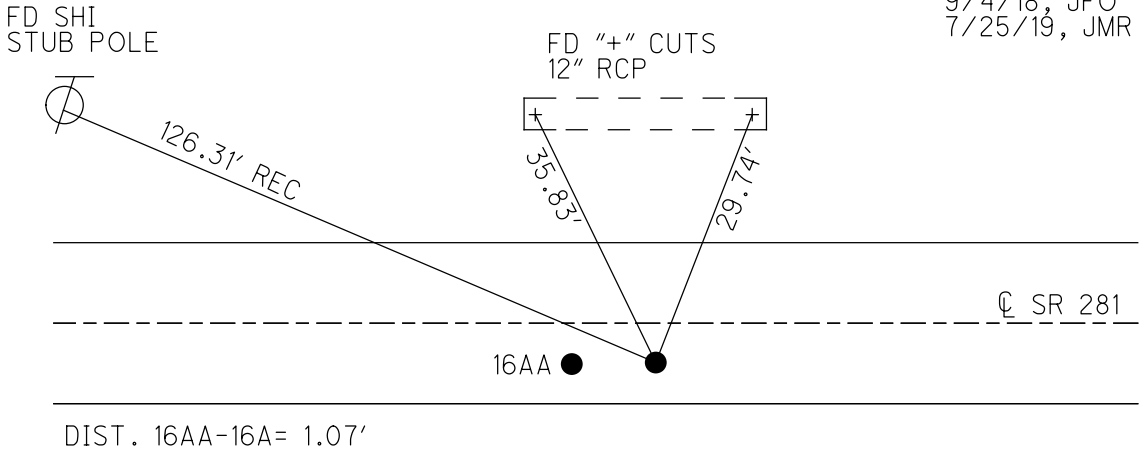
PERSONNEL _____ REFERENCE NO. 16 A SHEET 7 OF 34
 NOTES HUSS DATE 8/18/98 ROUTE SR 281
 H.C. BARNHISEL WEATHER FAIR COUNTY HENRY
 R.C. ROUSOS TEMP. 82° TOWNSHIP MONROE
 SECTION 20
 DWG BY NIESE PID CHIP_2 T 4 N R 7 E

TYPE MONUMENT SM.R.R.SPIKE
 ON SURFACE - ~~BELOW~~ ON
 OFFSET CL PAVEMENT 4.4' ~~±~~ : RT
6.9' TO RT EDGE PAVEMENT
 STATION: 403+83



HORZ.DATUM: NAD83(2011) GEOID: 2012A
 GRID: NORTHING: 592785.261 EASTING: 1534176.568

RECORD:
 STA 404+12.25
 1/4-1/4 SEC 20
 FD SM.R.R.SPIKE
 8/18/98, MB
 SET P.K./WASHER
 9/28/98, MB
 FD P.K.NAIL
 REF16A
 9/4/18, JFO
 7/25/19, JMR

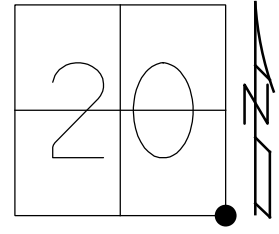


NOTE:
 FD MAG NAIL
 ORIGIN UNKNOWN
 REFAA16
 N: 592785.291
 E: 1534175.495

O.D.O.T. DISTRICT 2 SURVEY OFFICE (USE ONLY)

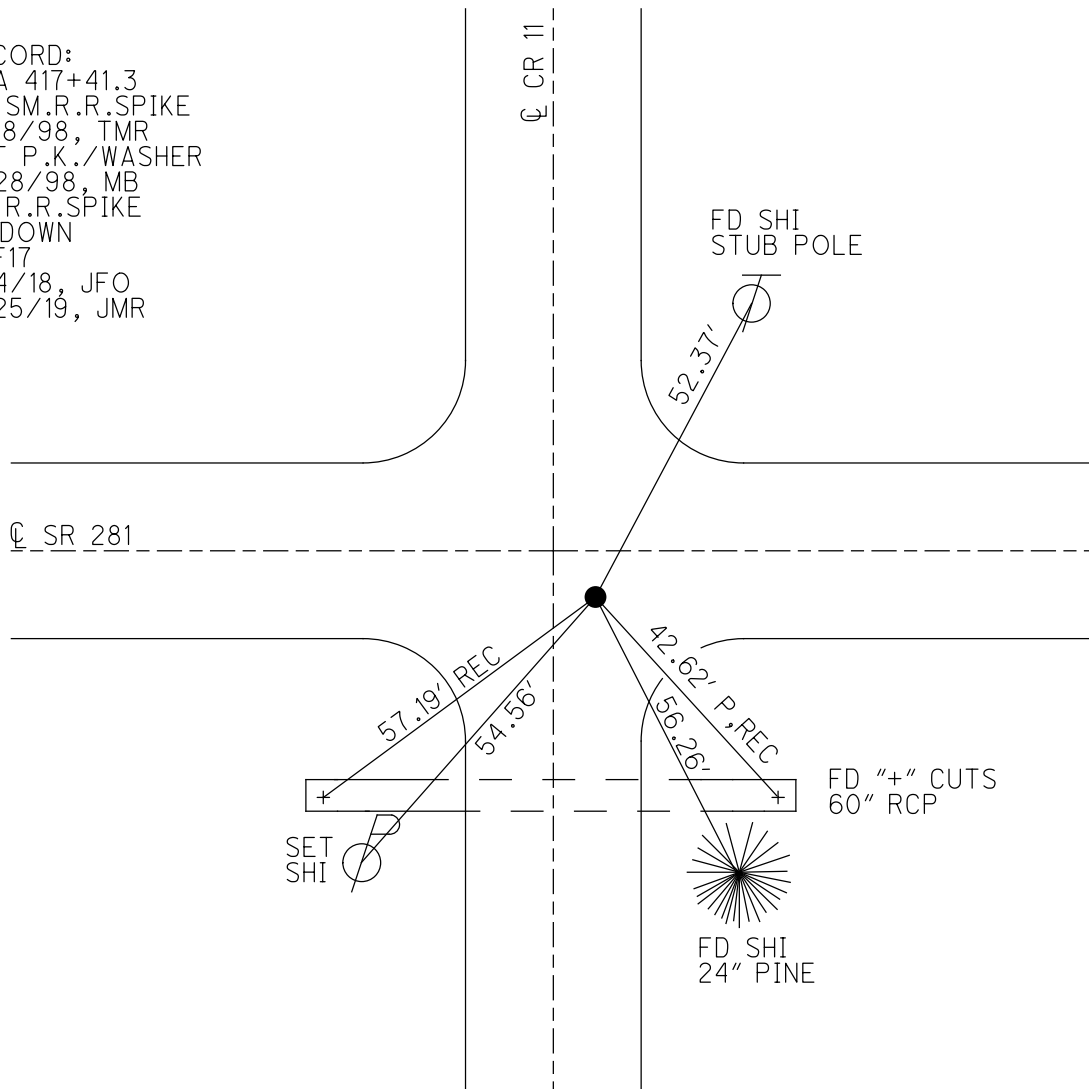
PERSONNEL _____ REFERENCE NO. 17 SHEET 8 OF 34
 NOTES MILLER DATE 9/4/18 ROUTE SR 281
 H.C. O'DONNELL WEATHER SUNNY COUNTY HENRY
 R.C. MILLER TEMP. 90° TOWNSHIP MONROE
 DWG BY NIESE PID CHIP_2 SECTION 20
 T 4 N R 7 E

TYPE MONUMENT SM.R.R.SPIKE
~~ON SURFACE~~ - BELOW 3"
 OFFSET \odot PAVEMENT 5.8' ~~LT~~ : RT
 - TO - EDGE PAVEMENT
 STATION: 417+12



HORZ.DATUM: NAD83(2011) GEOID: 2012A
 GRID: NORTHING: 592758.493 EASTING: 1535504.093

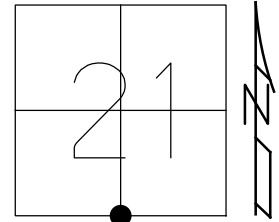
RECORD:
 STA 417+41.3
 FD SM.R.R.SPIKE
 8/18/98, TMR
 SET P.K./WASHER
 9/28/98, MB
 FD R.R.SPIKE
 3" DOWN
 REF17
 9/4/18, JFO
 7/25/19, JMR



O.D.O.T. DISTRICT 2 SURVEY OFFICE (USE ONLY)

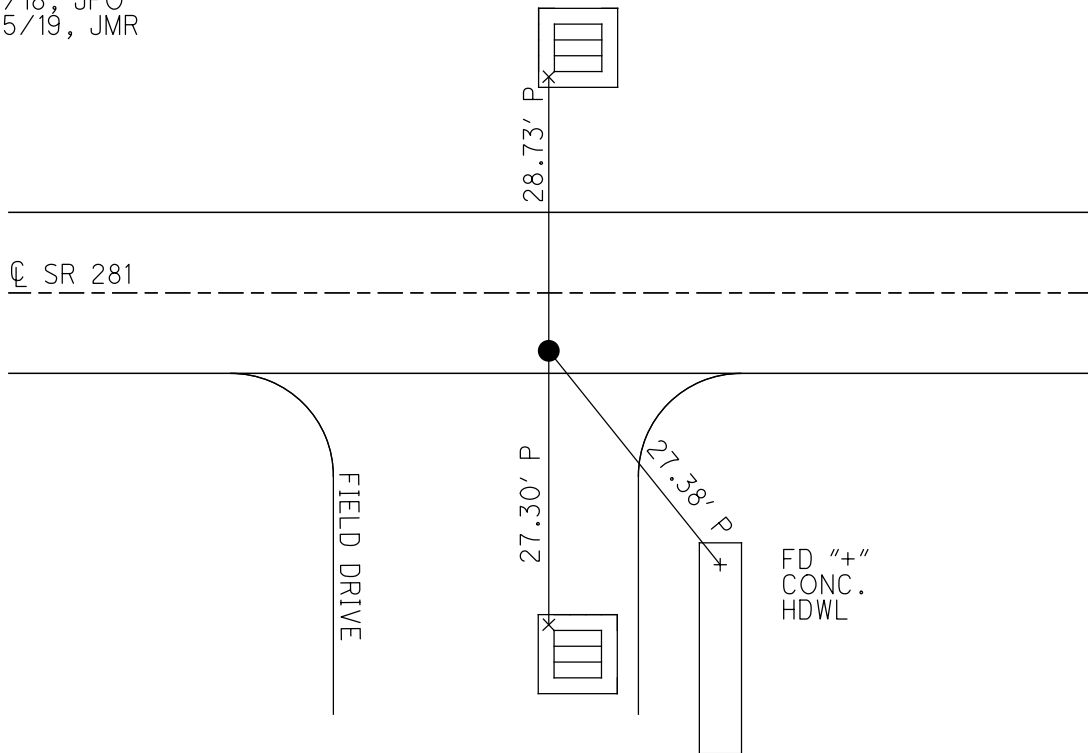
PERSONNEL _____ REFERENCE NO. 18 SHEET 9 OF 34
 NOTES HUSS DATE 8/18/98 ROUTE SR 281
 H.C. BARNHEISEL WEATHER FAIR COUNTY HENRY
 R.C. ROUSOS TEMP. 82° TOWNSHIP MONROE
 DWG BY NIESE PID CHIP_2 SECTION 21
 T 4 N R 7 E

TYPE MONUMENT SM.R.R.SPIKE
 ON SURFACE - ~~BELOW~~ ON
 OFFSET C PAVEMENT 5.3' ~~LT~~ : RT
5.4' TO RT EDGE PAVEMENT
 STATION: 443+59



HORIZ.DATUM: NAD83(2011) GEOID: 2012A
 GRID: NORTHING: 592723.355 EASTING: 1538149.973

RECORD:
 STA 443+87.93
 FD SM.R.R.SPIKE
 8/18/98, MB
 SET P.K./WASHER
 9/28/98, MB
 FD P.K.NAIL
 REF18
 9/4/18, JFO
 7/25/19, JMR



O.D.O.T. DISTRICT 2 SURVEY OFFICE (USE ONLY)

PERSONNEL

REFERENCE NO. 18 A

SHEET 10 OF 34

NOTES HUSS DATE 8/18/98
 H.C. BARNHEISEL WEATHER FAIR
 R.C. ROUSOS TEMP. 82°

ROUTE SR 281
 COUNTY HENRY
 TOWNSHIP MONROE
 SECTION 21

DWG BY NIESE PID CHIP_2

T 4 N R 7 E

TYPE MONUMENT SM.R.R.SPIKE

ON SURFACE - ~~BELOW~~ ON

OFFSET ☉ PAVEMENT 5.0' ~~LF~~ : RT

5.4' TO RT EDGE PAVEMENT

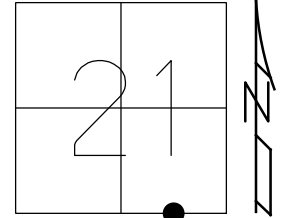
STATION: 456+88

HORZ.DATUM: NAD83(2011)

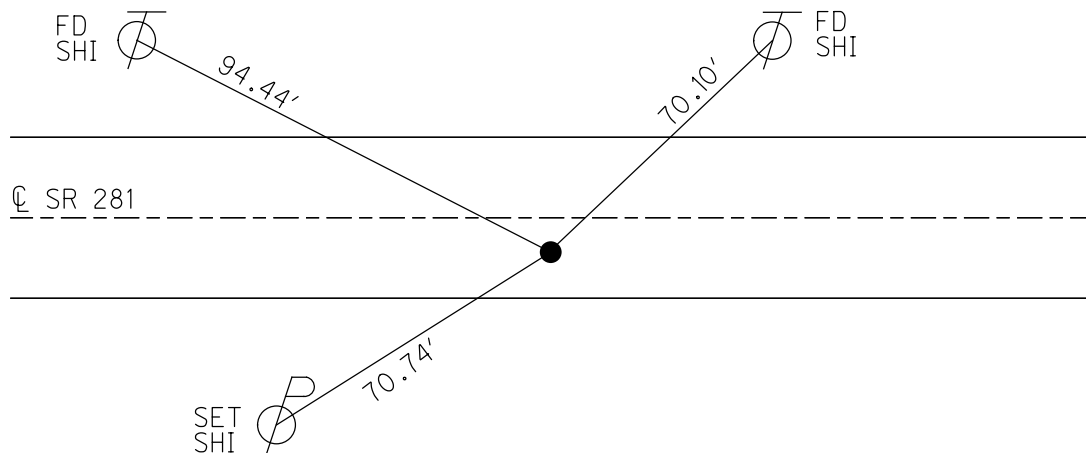
GEOID: 2012A

GRID: NORTHING: 592702.295

EASTING: 1539478.421



RECORD:
 STA 457+16.4
 1/4-1/4 POINT SEC 21
 FD SM.R.R.SPIKE
 8/18/98, MB
 SET P.K./WASHER
 9/28/98, MB
 FD P.K./WASHER
 REFA18
 9/4/18, JFO
 7/25/19, JMR



O.D.O.T. DISTRICT 2 SURVEY OFFICE (USE ONLY)

PERSONNEL

REFERENCE NO. 19

SHEET 11 OF 34

NOTES RHOADES

DATE 9/6/18

ROUTE SR 281

H.C. O'DONNELL

WEATHER FAIR

COUNTY HENRY

R.C. RHOADES

TEMP. 70°

TOWNSHIP MONROE

SECTION 22

DWG BY NIESE PID CHIP_2

T 4 N R 7 E

TYPE MONUMENT SM.R.R.SPIKE

~~ON SURFACE~~ - BELOW 1.5"

OFFSET \odot PAVEMENT 5.25' \pm : RT

- TO - EDGE PAVEMENT 5.4' W CR NORTH

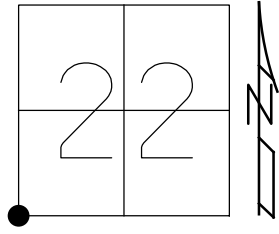
STATION: 470+16

HORZ.DATUM: NAD83(2011)

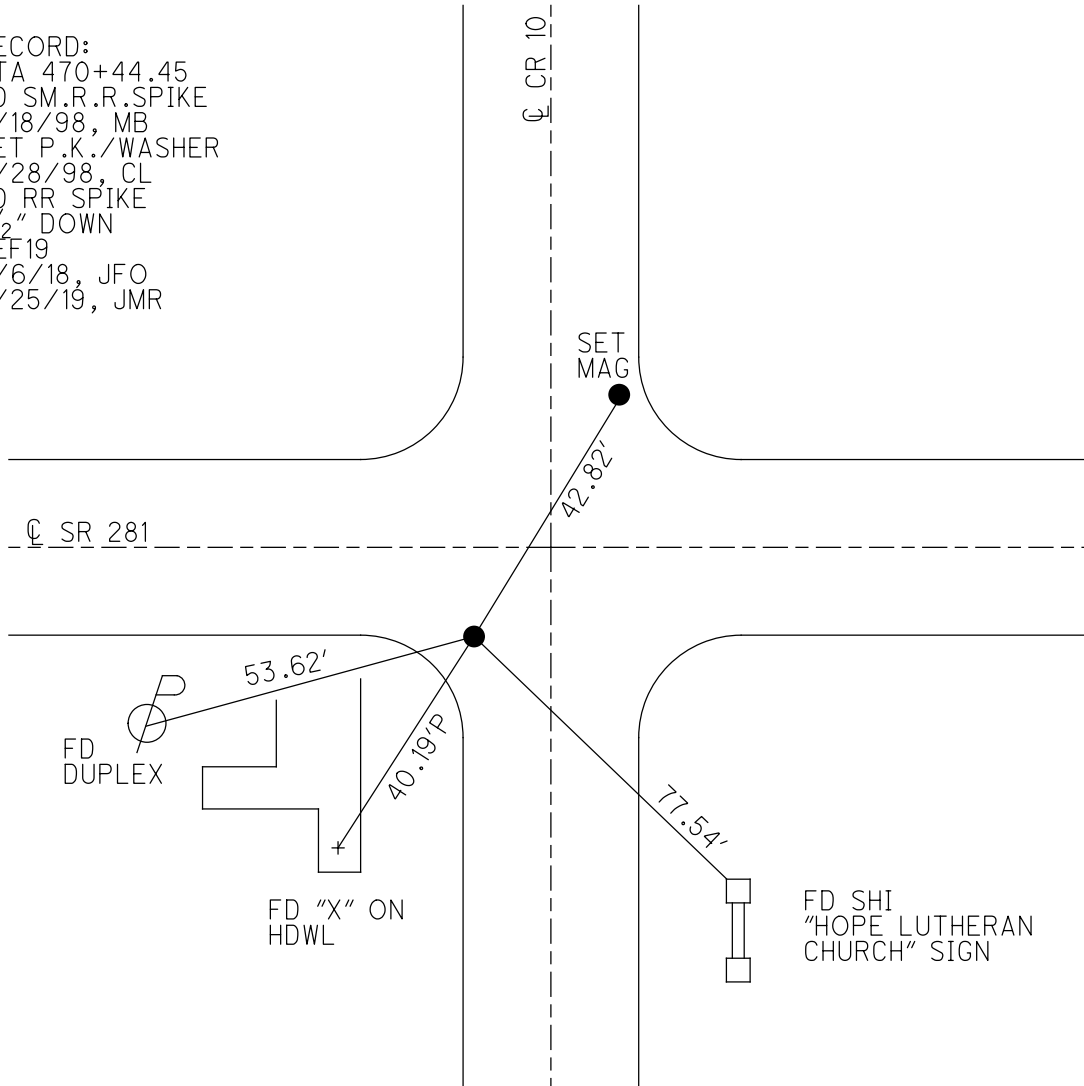
GEOID: 2012A

GRID: NORTHING: 592681.183

EASTING: 1540806.673



RECORD:
 STA 470+44.45
 FD SM.R.R.SPIKE
 8/18/98, MB
 SET P.K./WASHER
 9/28/98, CL
 FD RR SPIKE
 1 1/2" DOWN
 REF 19
 9/6/18, JFO
 7/25/19, JMR



O.D.O.T. DISTRICT 2 SURVEY OFFICE (USE ONLY)

PERSONNEL

REFERENCE NO. 19 A

SHEET 12 OF 34

NOTES RHOADES DATE 9/6/18
 H.C. O'DONNELL WEATHER FAIR
 R.C. RHOADES TEMP. 70°

ROUTE SR 281
 COUNTY HENRY
 TOWNSHIP MONROE
 SECTION 22

DWG BY NIESE PID CHIP_2

T 4 N R 7 E

TYPE MONUMENT P.K.NAIL

ON SURFACE - ~~BELOW~~ ON

OFFSET ☉ PAVEMENT 4.3' ~~±~~ : RT

6.4' TO RT EDGE PAVEMENT

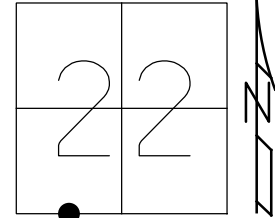
STATION: 483+42

HORIZ.DATUM: NAD83(2011)

GEOID: 2012A

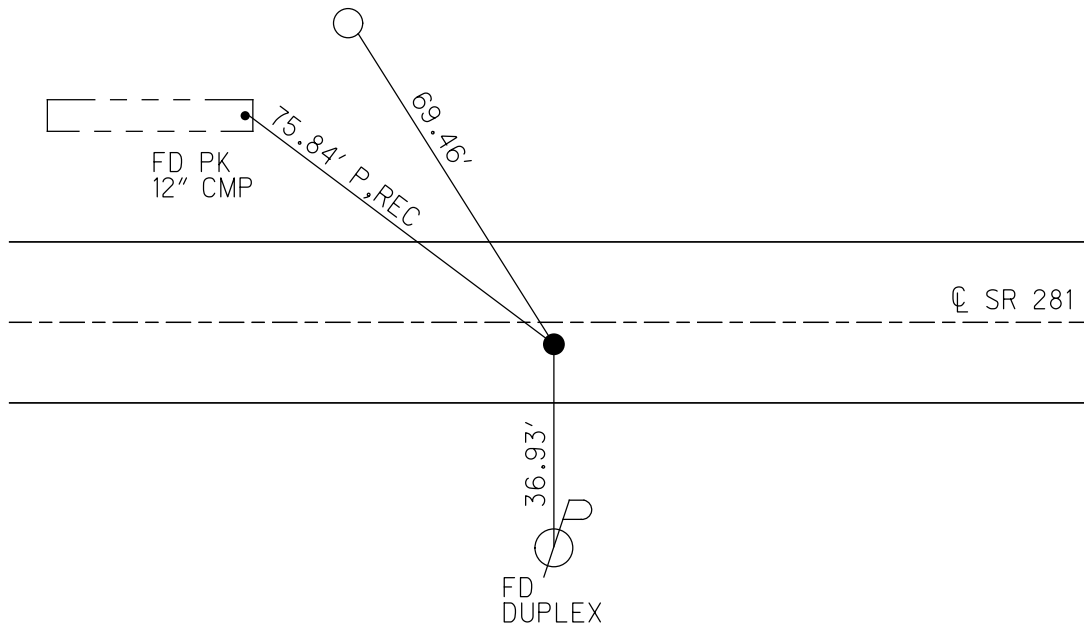
GRID: NORTHING: 592670.827

EASTING: 1542131.201



RECORD:
 STA 483+68.7
 1/4-1/4 SEC 22
 FD SM.R.R.SPIKE
 8/18/98, MB
 SET P.K./WASHER
 9/28/98, MRC
 FD P.K.NAIL
 REFA19
 9/6/18, JFO
 7/25/19, JMR

FD "+" CUT
 2 1/2" UP
 FEN POST
 LEANING WEST



O.D.O.T. DISTRICT 2 SURVEY OFFICE (USE ONLY)

PERSONNEL _____ REFERENCE NO. 20 SHEET 13 OF 34
 NOTES RHOADES DATE 9/6/18 ROUTE SR 281
 H.C. O'DONNELL WEATHER FAIR COUNTY HENRY
 R.C. RHOADES TEMP. 70° TOWNSHIP MONROE
 _____ SECTION 22
 DWG BY NIESE PID CHIP_2 T 4 N R 7 E

TYPE MONUMENT P.K./WASHER

ON SURFACE - ~~BELOW~~ ON

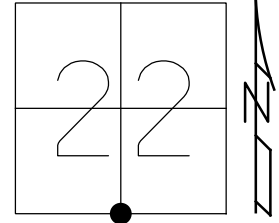
OFFSET 6.7' \perp PAVEMENT 4.0' ~~RT~~ : RT

6.7' TO RT EDGE PAVEMENT

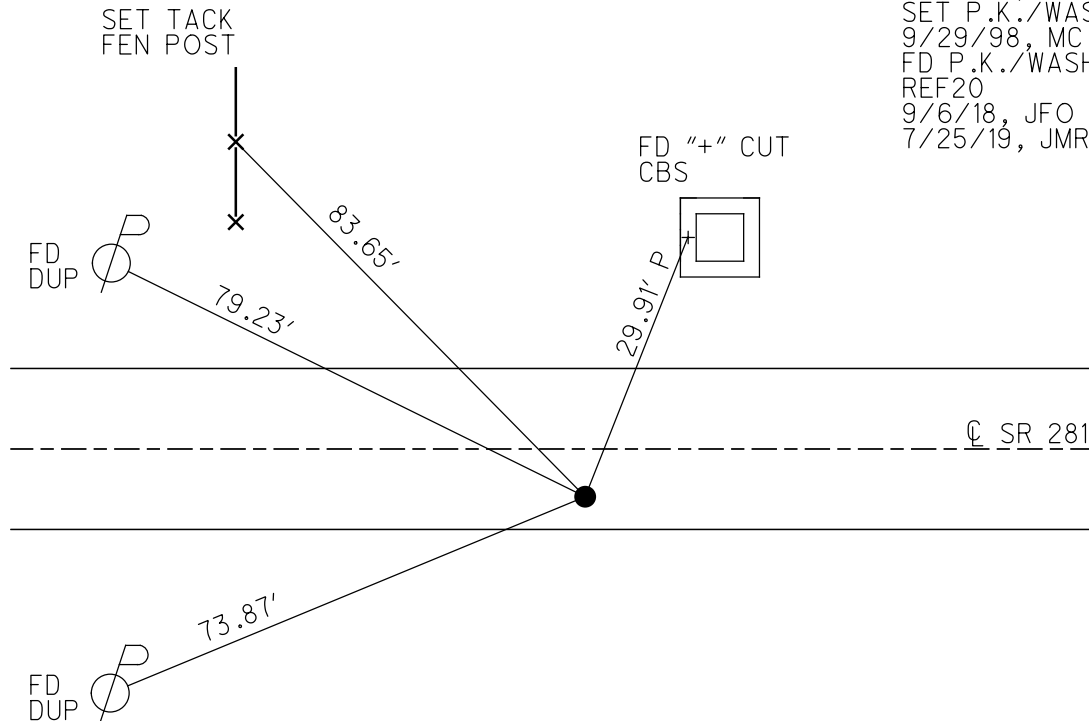
STATION: 496+89.49

HORIZ.DATUM: NAD83(2011) GEOID: 2012A

GRID: NORTHING: 592657.942 EASTING: 1543454.701



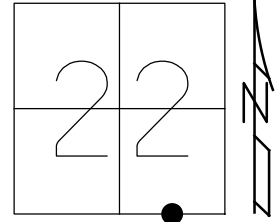
RECORD:
 STA 496+93.3
 FD SM.R.R.SPIKE
 8/18/98, MB
 SET P.K./WASHER
 9/29/98, MC
 FD P.K./WASHER
 REF20
 9/6/18, JFO
 7/25/19, JMR



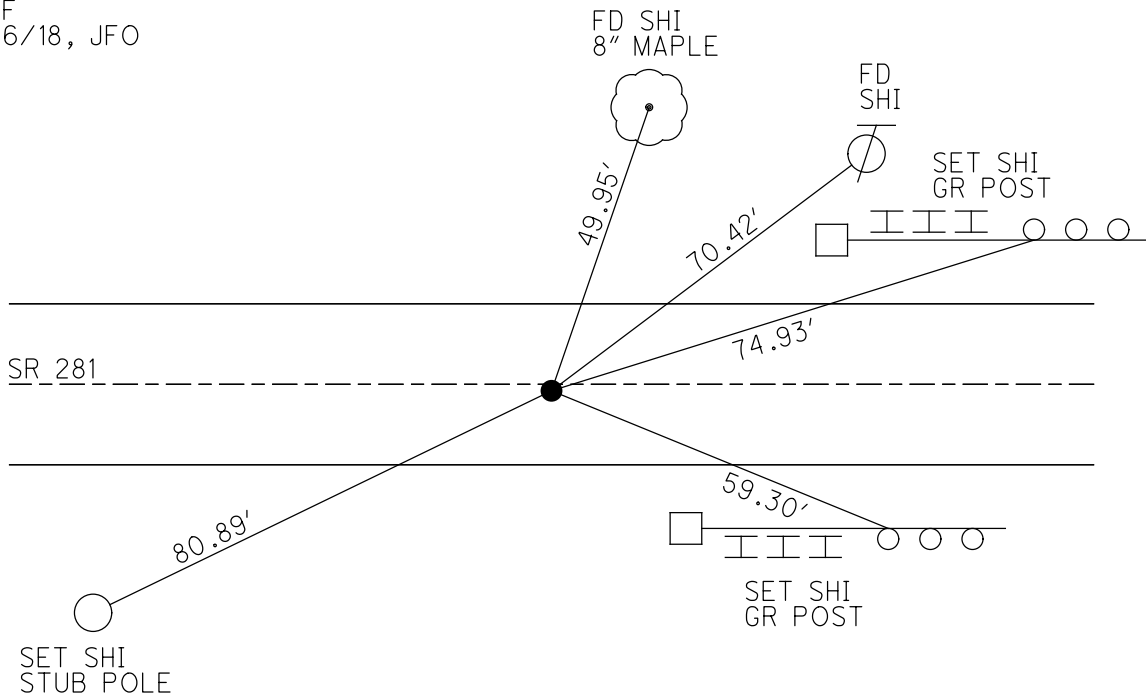
O.D.O.T. DISTRICT 2 SURVEY OFFICE (USE ONLY)

PERSONNEL _____ REFERENCE NO. 20 A SHEET 14 OF 34
 NOTES HUSS DATE 8/18/98 ROUTE SR 281
 H.C. BARNHISEL WEATHER FAIR COUNTY HENRY
 R.C. ROUSOS TEMP. 84° TOWNSHIP MONROE
 SECTION 22
 DWG BY NIESE PID CHIP_2 T 4 N R 7 E

TYPE MONUMENT SM.R.R.SPIKE
 ON SURFACE - ~~BELOW~~ ON
 OFFSET 0.6' ± : RT
9.9' TO RT EDGE PAVEMENT
 STATION: 509+89
 HORZ.DATUM: - GEOID: -
 GRID: NORTHING: - EASTING: -



RECORD:
 STA 510+16.87
 1/4-1/4 SEC 22
 FD SM.R.R.SPIKE
 8/18/98, MB
 SET P.K./WASHER
 9/29/98, MRC
 DNF
 9/6/18, JFO



O.D.O.T. DISTRICT 2 SURVEY OFFICE (USE ONLY)

PERSONNEL

REFERENCE NO. 22

SHEET 15 OF 34

NOTES RHOADES

DATE 9/6/18

ROUTE SR 281

H.C. O'DONNELL

WEATHER FAIR

COUNTY HENRY

R.C. RHOADES

TEMP. 70°

TOWNSHIP MONROE

SECTION 23

DWG BY NIESE PID PAVETRAIN

T 4 N R 7 E

TYPE MONUMENT R.R. SPIKE

~~ON SURFACE~~ - BELOW 1 1/2"

OFFSET \odot PAVEMENT ON LT : RT

- TO - EDGE PAVEMENT 8.0' LT OF \odot SR 109

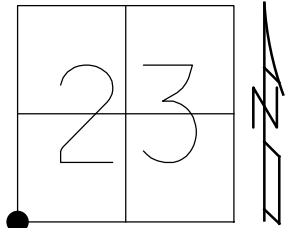
STATION: 523+38

HORZ. DATUM: NAD83(2011)

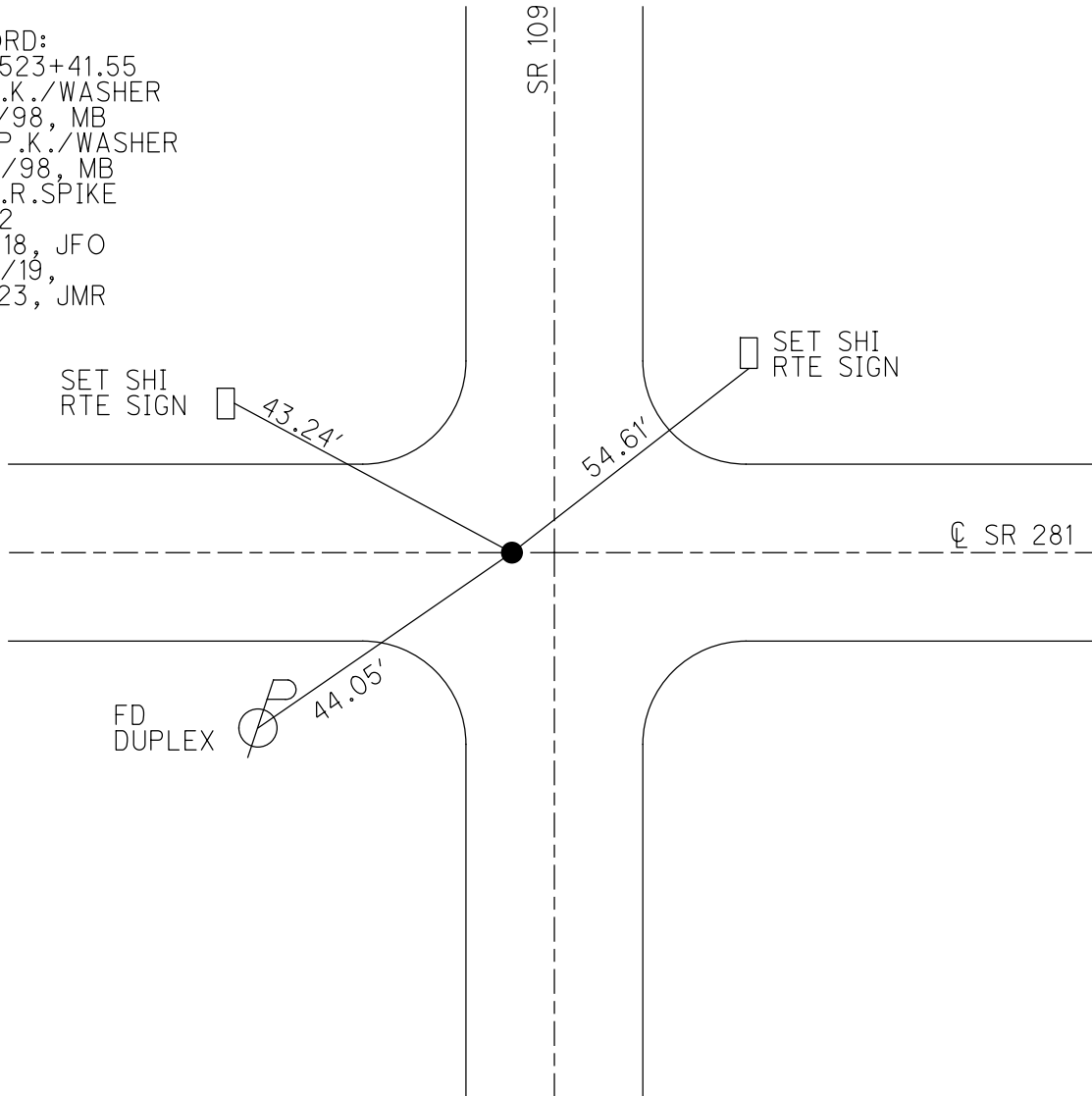
GEOID: 2012A

GRID: NORTHING: 592634.363

EASTING: 1546102.887



RECORD:
 STA 523+41.55
 FD P.K./WASHER
 8/18/98, MB
 SET P.K./WASHER
 9/28/98, MB
 FD R.R. SPIKE
 REF 22
 9/6/18, JFO
 7/25/19,
 1/11/23, JMR



O.D.O.T. DISTRICT 2 SURVEY OFFICE (USE ONLY)

PERSONNEL

REFERENCE NO. 22 A

SHEET 16 OF 34

NOTES RHOADES DATE 9/6/18
 H.C. O'DONNELL WEATHER FAIR
 R.C. RHOADES TEMP. 76°

ROUTE SR 281
 COUNTY HENRY
 TOWNSHIP MONROE
 SECTION 23

DWG BY NIESE PID PAVETRAIN

T 4 N R 7 E

TYPE MONUMENT P.K.NAIL

ON SURFACE - ~~BELOW~~ ON

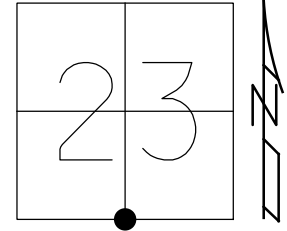
OFFSET ☉ PAVEMENT ON LT : RT

10.6' TO RT EDGE PAVEMENT

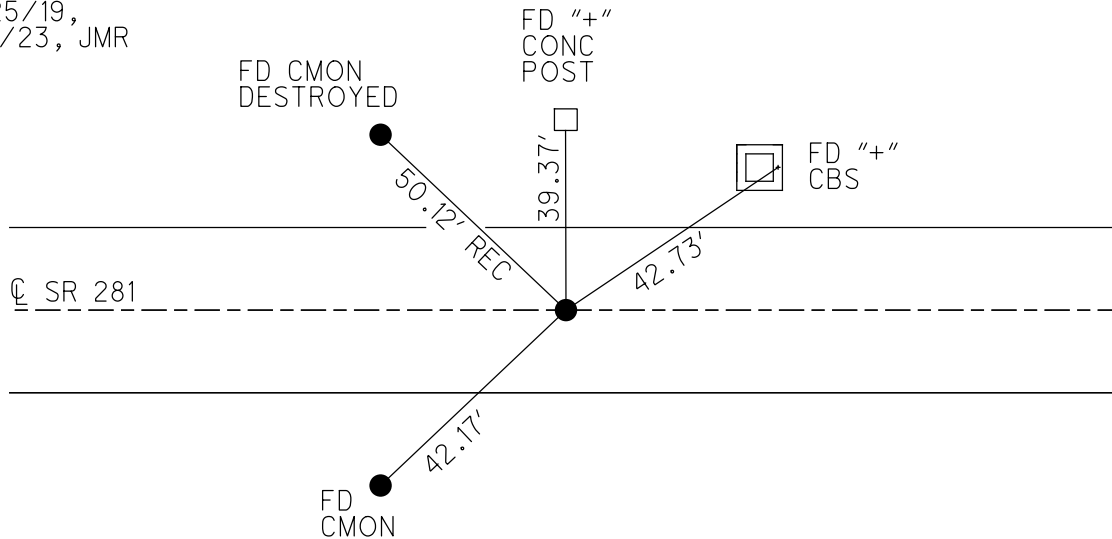
STATION: 549+61

HORZ.DATUM: NAD83(2011) GEOID: 2012A

GRID: NORTHING: 592631.828 EASTING: 1548748.942



RECORD:
 FD SM.R.R.SPIKE
 5/28/98, MC
 SET P.K./WASHER
 10/1/98, MRC
 FD P.K.NAIL
 REFA22
 9/6/18, JFO
 7/25/19,
 1/11/23, JMR



O.D.O.T. DISTRICT 2 SURVEY OFFICE (USE ONLY)

PERSONNEL

REFERENCE NO. 22 AB

SHEET 17 OF 34

NOTES CANTERBURY

DATE 5/28/98

ROUTE SR 281

H.C. ROUSOS

WEATHER FAIR

COUNTY HENRY

R.C. NUHFER

TEMP. 75°

TOWNSHIP MONROE

DWG BY NIESE

PID PAVETRAIN

SECTION 24

T 4 N R 7 E

TYPE MONUMENT SM.R.R.SPIKE

ON SURFACE - ~~BELOW~~ ON

OFFSET C PAVEMENT 2.8' ~~±~~ : RT

- TO - EDGE PAVEMENT

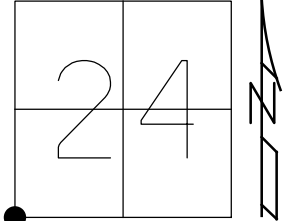
STATION: 576+06

HORZ.DATUM: -

GEOID: -

GRID: NORTHING: -

EASTING: -



RECORD:
 FD R.R.SPIKE,
 SET BY COUNTY
 OVER STONE
 6/5/79
 FD SM.R.R.SPIKE
 5/28/98, MC
 SET P.K./WASHER
 10/1/98, MC
 DNF
 9/6/18, JFO
 1/11/23, JMR

C CR 8

DIST. 22AB-22B= 1.88' REC

C SR 281

● 22B

41.80' REC



FD "+" CUT
CBS

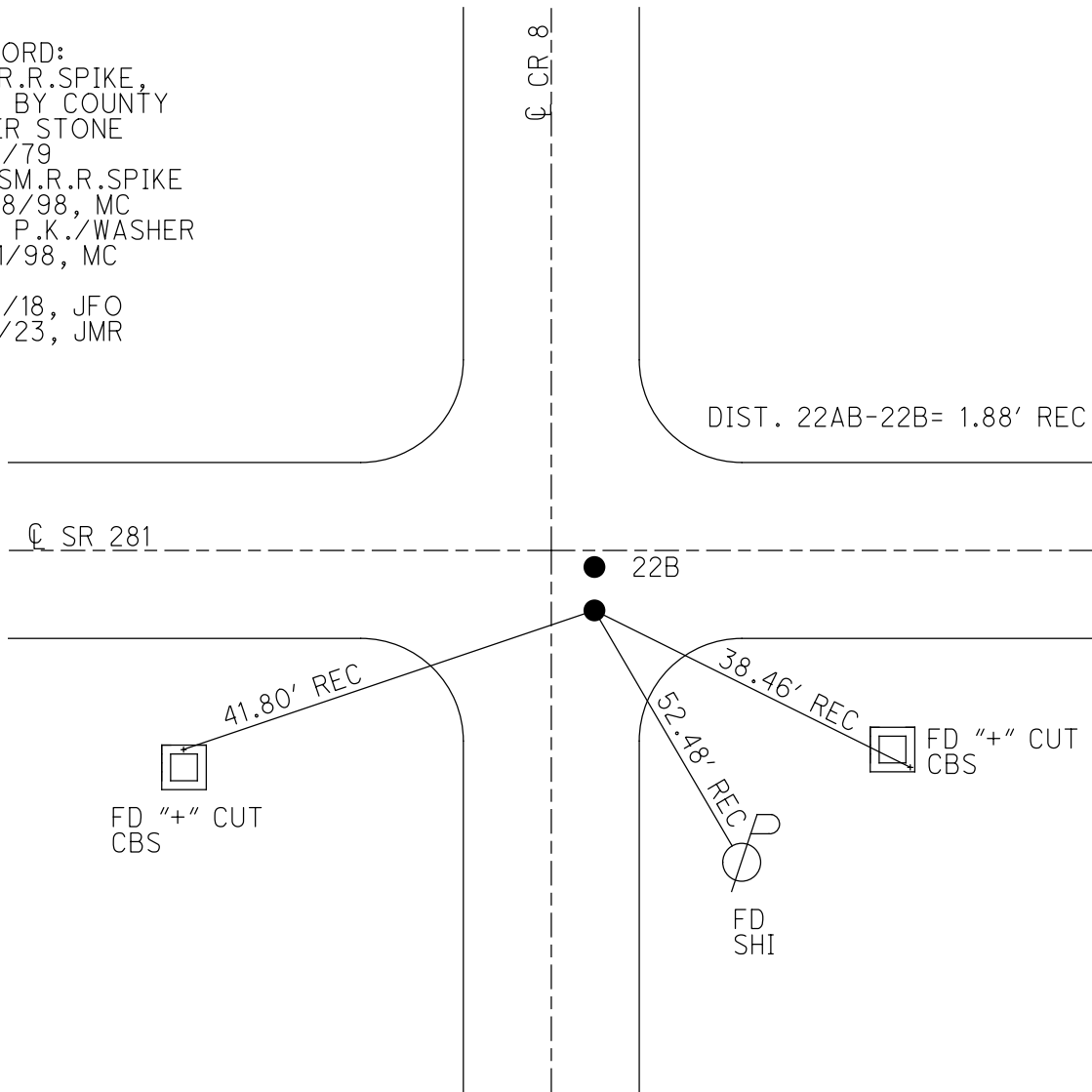
38.46' REC



FD "+" CUT
CBS

52.48' REC

FD
SHI



O.D.O.T. DISTRICT 2 SURVEY OFFICE (USE ONLY)

PERSONNEL

REFERENCE NO. 22 B

SHEET 18 OF 34

NOTES RHOADES

DATE 9/6/18

ROUTE SR 281

H.C. O'DONNELL

WEATHER FAIR

COUNTY HENRY

R.C. RHOADES

TEMP. 76°

TOWNSHIP MONROE

SECTION 24

DWG BY NIESE

PID PAVETRAIN

T 4 N R 7 E

TYPE MONUMENT P.K.NAIL

ON SURFACE - ~~BELOW~~ ON

OFFSET \bar{C} PAVEMENT 1.0' ~~±~~ : RT

- TO - EDGE PAVEMENT

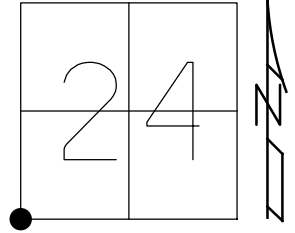
STATION: 576+06

HORIZ.DATUM: NAD83(2011)

GEOID: 2012A

GRID: NORTHING: 592611.755

EASTING: 1551393.702

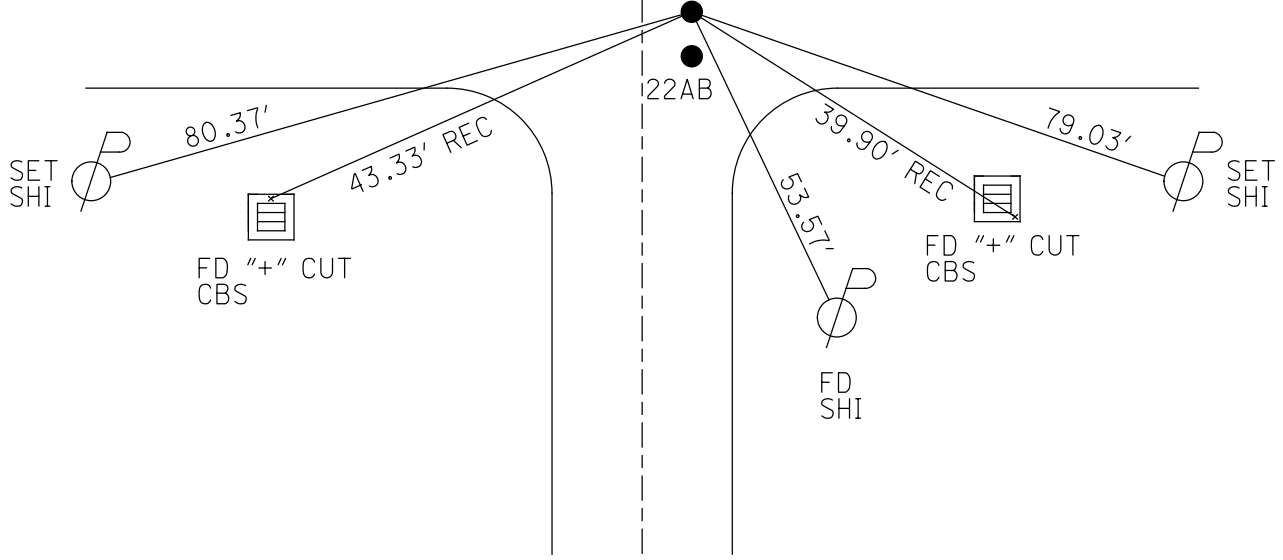


RECORD:
 FD HARROW TOOTH
 SQUARE SPIKE
 BY COUNTY
 6/5/79
 FD SM.R.R. SPIKE
 5/28/98, MC
 SET P.K./WASHER
 10/1/98, MRC
 FD P.K.NAIL
 REFB22
 9/6/18, JFO
 7/25/19,
 1/11/23, JMR

\bar{C} CR 8

DIST. 22AB-22B= 1.88' REC

\bar{C} SR 281



O.D.O.T. DISTRICT 2 SURVEY OFFICE (USE ONLY)

PERSONNEL

REFERENCE NO. 23

SHEET 19 OF 34

NOTES RHOADES

DATE 9/6/18

ROUTE SR 281

H.C. O'DONNELL

WEATHER FAIR

COUNTY HENRY

R.C. RHOADES

TEMP. 76°

TOWNSHIP MONROE

SECTION 24

DWG BY NIESE

PID PAVETRAIN

T 4 N R 7 E

TYPE MONUMENT P.K. SHANK

ON SURFACE - ~~BELOW~~ ON

OFFSET ☉ PAVEMENT ON LT : RT

10.4' TO RT EDGE PAVEMENT

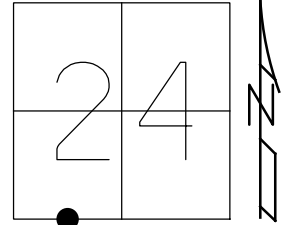
STATION: 589+31

HORIZ.DATUM: NAD83(2011)

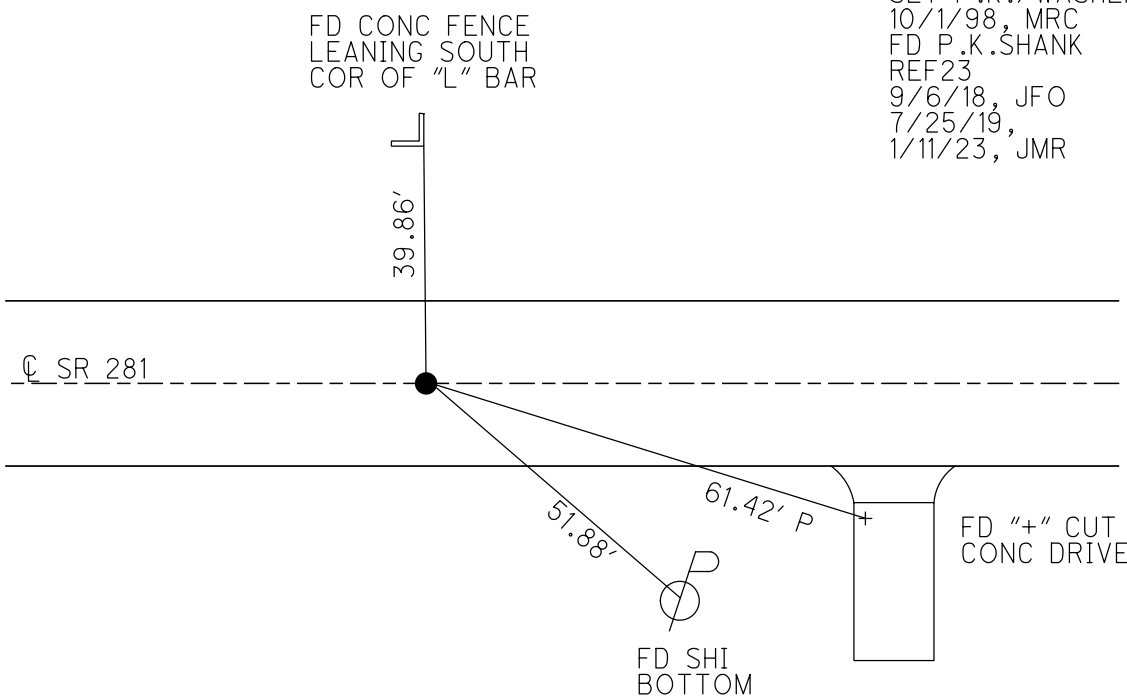
GEOID: 2012A

GRID: NORTHING: 592604.447

EASTING: 1552718.822



RECORD:
 1/4-1/4 COR SEC 24
 FD SM.R.R.SPIKE
 8/18/98, MC
 SET SM.R.R.SPIKE
 9/2/87, CL
 FD SM.R.R.SPIKE
 8/18/98, MC
 SET P.K./WASHER
 10/1/98, MRC
 FD P.K.SHANK
 REF23
 9/6/18, JFO
 7/25/19,
 1/11/23, JMR



O.D.O.T. DISTRICT 2 SURVEY OFFICE (USE ONLY)

PERSONNEL

REFERENCE NO. 25

SHEET 20 OF 34

NOTES RHOADES

DATE 9/6/18

ROUTE SR 281

H.C. O'DONNELL

WEATHER CLOUDY

COUNTY HENRY

R.C. RHOADES

TEMP. 76°

TOWNSHIP RICHFIELD

DWG BY NIESE

PID PAVETRAIN

SECTION 19

T 4 N R 8 E

TYPE MONUMENT SM.R.R.SPIKE

~~ON SURFACE~~ - BELOW 3"

OFFSET \odot PAVEMENT 3.9' ~~ET~~ : RT

- TO - EDGE PAVEMENT 11.7' W \odot CR 7 S

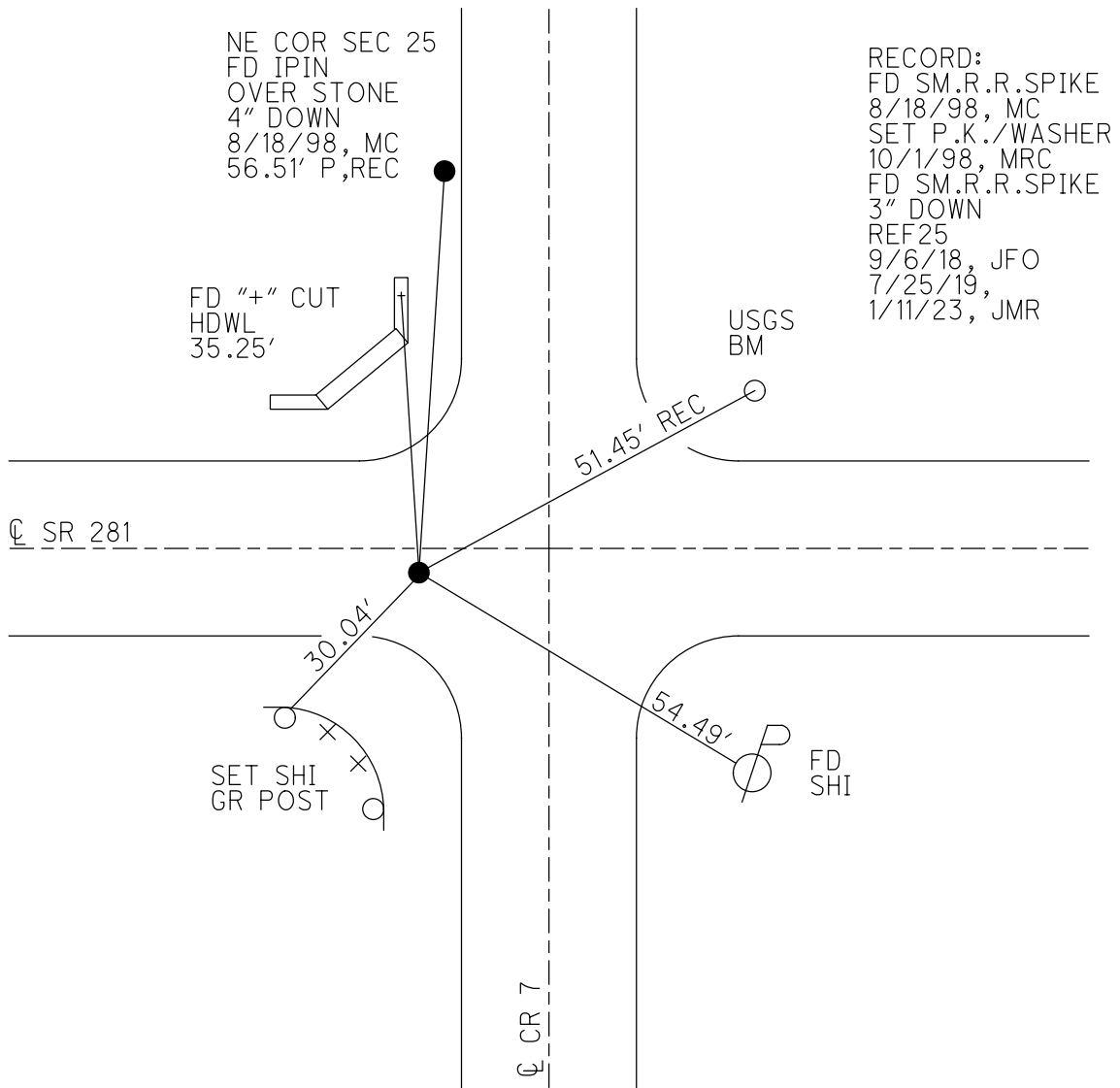
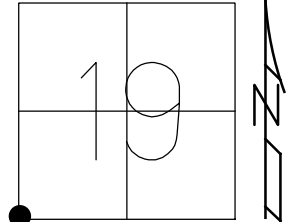
STATION: 628+82

HORIZ.DATUM: NAD83(2011)

GEOID: 2012A

GRID: NORTHING: 592526.089

EASTING: 1556668.797



RECORD:
 FD SM.R.R.SPIKE
 8/18/98, MC
 SET P.K./WASHER
 10/1/98, MRC
 FD SM.R.R.SPIKE
 3" DOWN
 REF25
 9/6/18, JFO
 7/25/19,
 1/11/23, JMR

O.D.O.T. DISTRICT 2 SURVEY OFFICE (USE ONLY)

PERSONNEL

REFERENCE NO. 26

SHEET 21 OF 34

NOTES RHOADES DATE 9/6/18
 H.C. O'DONNELL WEATHER CLOUDY
 R.C. RHOADES TEMP. 76°

ROUTE SR 281
 COUNTY HENRY
 TOWNSHIP RICHFIELD
 SECTION 19
 T 4 N R 8 E

DWG BY NIESE PID PAVETRAIN

TYPE MONUMENT P.K. NAIL

ON SURFACE - ~~BELOW~~ ON

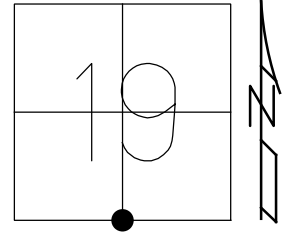
OFFSET \varnothing PAVEMENT 1.8' ~~LT~~ : RT

8.2' TO RT EDGE PAVEMENT

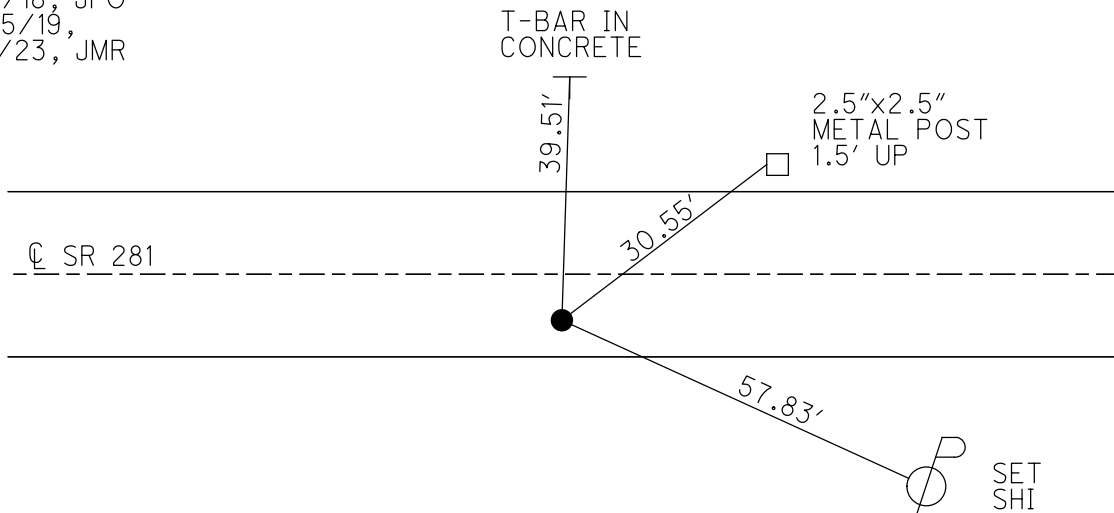
STATION: 654+65

HORIZ.DATUM: NAD83(2011) GEOID: 2012A

GRID: NORTHING: 592500.566 EASTING: 1559252.112



RECORD:
 SET SM.R.R.SPIKE
 9/2/87, CL
 FD SM.R.R.SPIKE
 ATOP R.R.SPIKE
 8/18/98, MC
 SET P.K./WASHER
 10/1/98, MRC
 FD P.K.NAIL
 REF26
 9/6/18, JFO
 7/25/19,
 1/11/23, JMR



O.D.O.T. DISTRICT 2 SURVEY OFFICE (USE ONLY)

PERSONNEL

REFERENCE NO. 27

SHEET 22 OF 34

NOTES RHOADES
 H.C. O'DONNELL
 R.C. RHOADES

DATE 9/6/18
 WEATHER CLOUDY
 TEMP. 76°

ROUTE SR 281
 COUNTY HENRY
 TOWNSHIP RICHFIELD
 SECTION 20
T 4 N R 8 E

DWG BY NIESE PID PAVETRAIN

TYPE MONUMENT SM.R.R.SPIKE

~~ON SURFACE~~ - BELOW 3"

OFFSET \odot PAVEMENT 4.8' ~~RT~~ : RT

- TO - EDGE PAVEMENT 9.5' W OF \odot CR 6 N

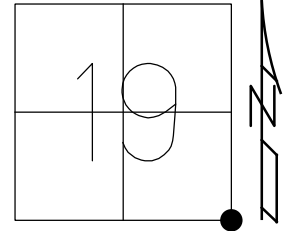
STATION: 681+06

HORZ.DATUM: NAD83(2011)

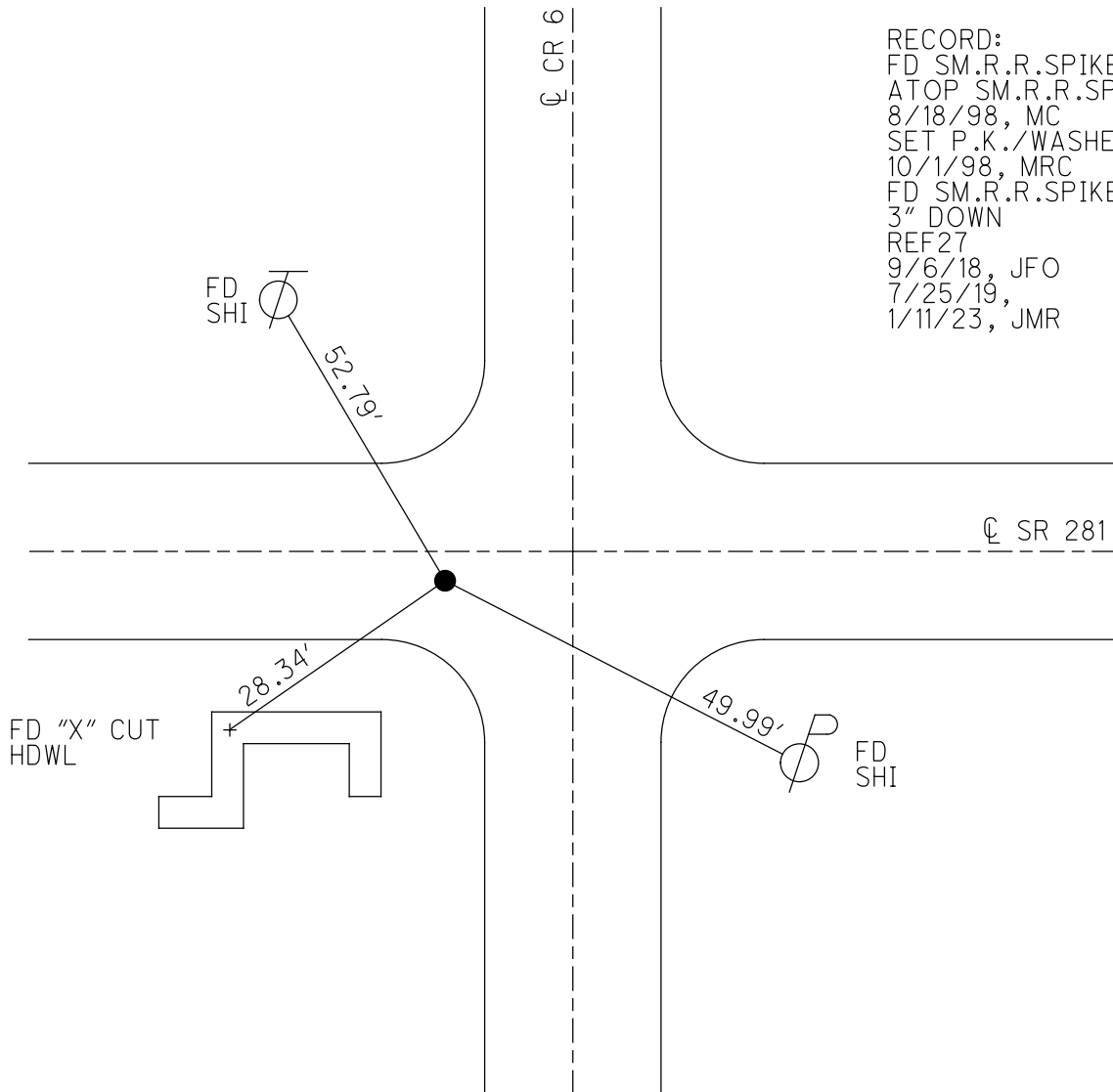
GEOID: 2012A

GRID: NORTHING: 592470.611

EASTING: 1561893.334



RECORD:
 FD SM.R.R.SPIKE
 ATOP SM.R.R.SPIKE
 8/18/98, MC
 SET P.K./WASHER
 10/1/98, MRC
 FD SM.R.R.SPIKE
 3" DOWN
 REF27
 9/6/18, JFO
 7/25/19,
 1/11/23, JMR



FD "X" CUT
 HDWL

28.34'

O.D.O.T. DISTRICT 2 SURVEY OFFICE (USE ONLY)

PERSONNEL

REFERENCE NO. 28

SHEET 23 OF 34

NOTES RHOADES

DATE 9/6/18

ROUTE SR 281

H.C. O'DONNELL

WEATHER CLOUDY

COUNTY HENRY

R.C. RHOADES

TEMP. 76°

TOWNSHIP RICHFIELD

DWG BY NIESE

PID PAVETRAIN

SECTION 20

T 4 N R 8 E

TYPE MONUMENT P.K./WASHER

ON SURFACE - ~~BELOW~~ ON

OFFSET \odot PAVEMENT 1.7' ~~±~~ : RT

8.7' TO RT EDGE PAVEMENT

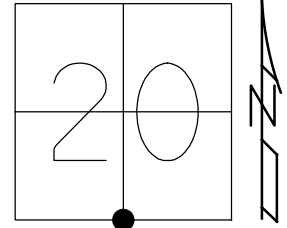
STATION: 707+25

HORZ.DATUM: NAD83(2011)

GEOID: 2012A

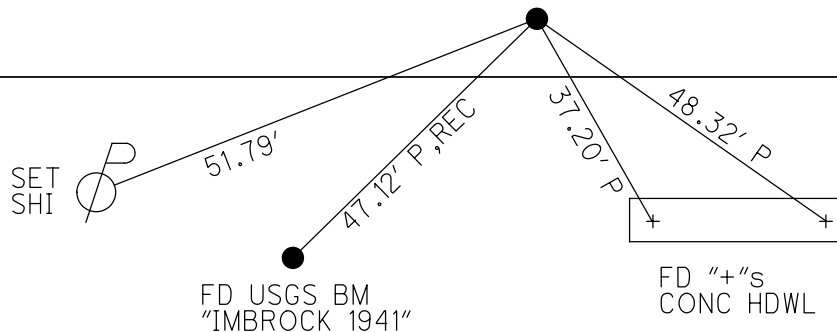
GRID: NORTHING: 592460.657

EASTING: 1564562.113



RECORD:
 FD SM.R.R.SPIKE
 ATOP P.K.NAIL
 6/2/98, MC
 SET P.K./WASHER
 10/5/98, MRC
 FD P.K./WASHER
 REF20
 9/6/18, JFO
 7/25/19,
 1/11/23, JMR

\odot SR 281



O.D.O.T. DISTRICT 2 SURVEY OFFICE (USE ONLY)

PERSONNEL

REFERENCE NO. 29

SHEET 24 OF 34

NOTES RHOADES
 H.C. O'DONNELL
 R.C. RHOADES

DATE 9/6/18
 WEATHER CLOUDY
 TEMP. 76°

ROUTE SR 281
 COUNTY HENRY
 TOWNSHIP RICHFIELD
 SECTION 21
 T 4 N R 8 E

DWG BY NIESE PID PAVETRAN

TYPE MONUMENT SM.R.R.SPIKE

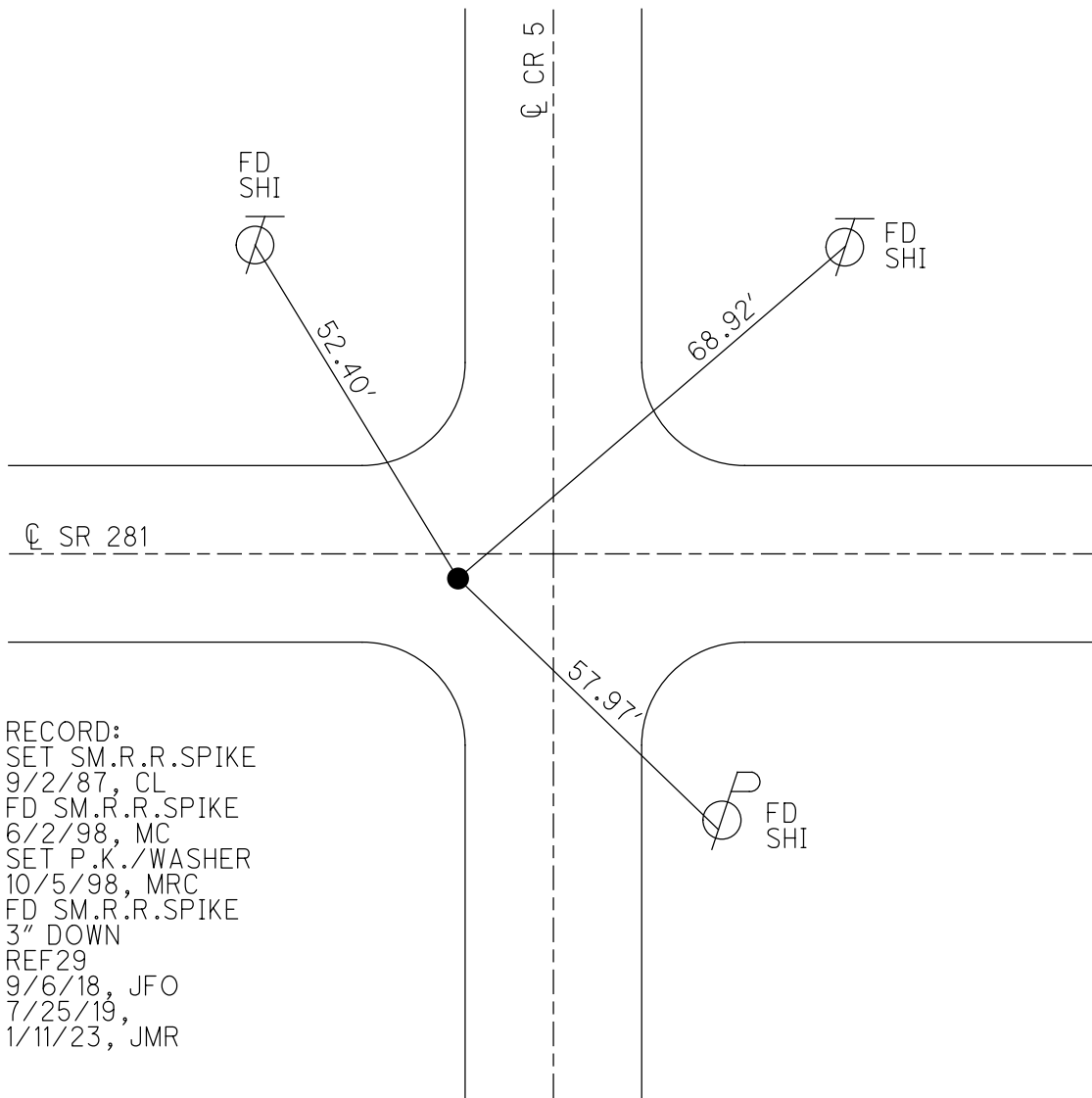
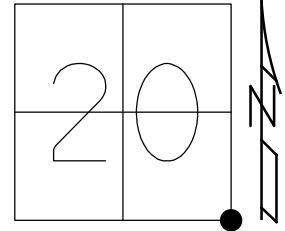
~~ON SURFACE~~ - BELOW 3"

OFFSET \odot PAVEMENT 2.0' ~~±~~ : RT
- TO - EDGE PAVEMENT 5.2' W OF \odot CR 5 N

STATION: 734+43

HORZ.DATUM: NAD83(2011) GEOID: 2012A

GRID: NORTHING: 592440.193 EASTING: 1567230.169



RECORD:
 SET SM.R.R.SPIKE
 9/2/87, CL
 FD SM.R.R.SPIKE
 6/2/98, MC
 SET P.K./WASHER
 10/5/98, MRC
 FD SM.R.R.SPIKE
 3" DOWN
 REF29
 9/6/18, JFO
 7/25/19,
 1/11/23, JMR

O.D.O.T. DISTRICT 2 SURVEY OFFICE (USE ONLY)

PERSONNEL

REFERENCE NO. 30

SHEET 25 OF 34

NOTES RHOADES

DATE 9/7/18

ROUTE SR 281

H.C. O'DONNELL

WEATHER CLOUDY

COUNTY HENRY

R.C. RHOADES

TEMP. 65°

TOWNSHIP RICHFIELD

DWG BY NIESE PID PAVETRAIN

SECTION 21

T 4 N R 8 E

TYPE MONUMENT SM.R.R.SPIKE

ON SURFACE - ~~BELOW~~ ON

OFFSET CL PAVEMENT 4.0' ~~RT~~ : RT

6.1' TO RT EDGE PAVEMENT

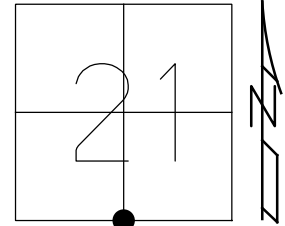
STATION: 761+02

HORZ.DATUM: NAD83(2011)

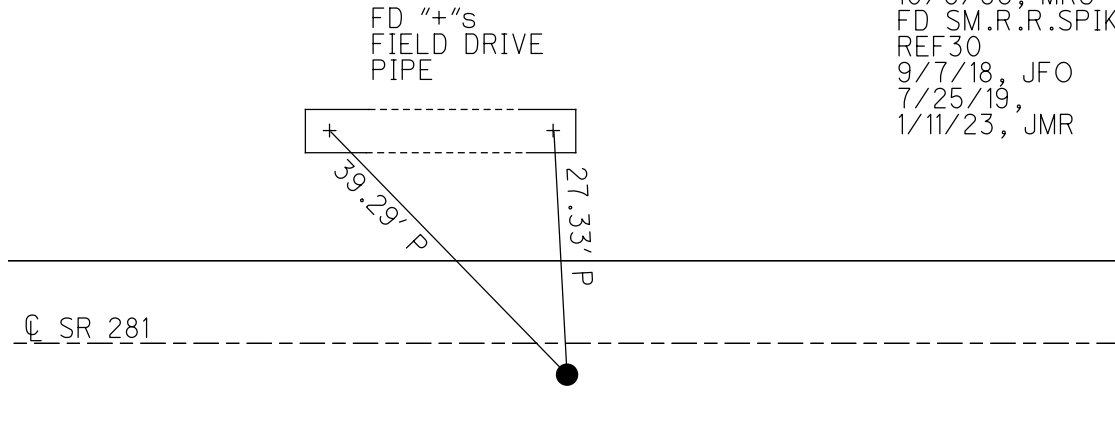
GEOID: 2012A

GRID: NORTHING: 592437.724

EASTING: 1569889.622



RECORD:
SET SM.R.R.SPIKE
9/2/87, CL
FD SM.R.R.SPIKE
6/2/98, MC
SET P.K./WASHER
10/5/98, MRC
FD SM.R.R.SPIKE
REF30
9/7/18, JFO
7/25/19,
1/11/23, JMR



O.D.O.T. DISTRICT 2 SURVEY OFFICE (USE ONLY)

PERSONNEL

REFERENCE NO. 31

SHEET 26 OF 34

NOTES RHOADES DATE 5/8/17

H.C. O'DONNELL WEATHER SUNNY

R.C. RHOADES TEMP. 44°

ROUTE SR 281

COUNTY HENRY

TOWNSHIP RICHFIELD

SECTION 28

DWG BY NIESE PID PAVETRAIN

T 4 N R 8 E

TYPE MONUMENT MAG/WASHER

ON SURFACE - ~~BELOW~~ ON

OFFSET \odot PAVEMENT 1.7' ~~ET~~ : RT

- TO - EDGE PAVEMENT

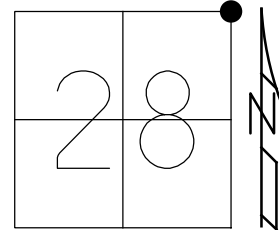
STATION: 787+93

HORZ.DATUM: NAD83(2011)

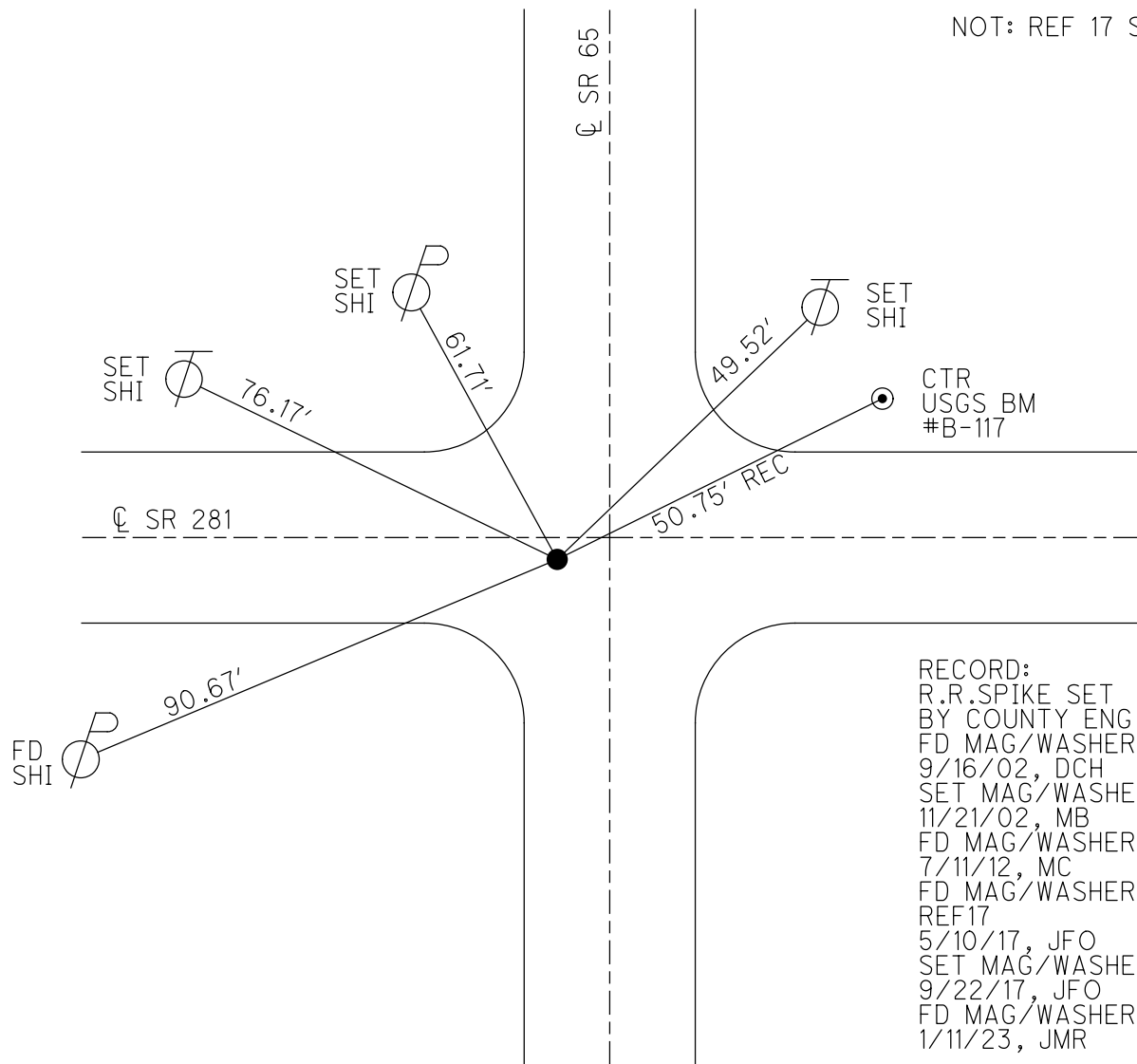
GEOID: 2012A

GRID: NORTHING: 592437.952

EASTING: 1572551.483



NOT: REF 17 SR 65



RECORD:
 R.R.SPIKE SET
 BY COUNTY ENG
 FD MAG/WASHER
 9/16/02, DCH
 SET MAG/WASHER
 11/21/02, MB
 FD MAG/WASHER
 7/11/12, MC
 FD MAG/WASHER
 REF17
 5/10/17, JFO
 SET MAG/WASHER
 9/22/17, JFO
 FD MAG/WASHER
 1/11/23, JMR

O.D.O.T. DISTRICT 2 SURVEY OFFICE (USE ONLY)

PERSONNEL

REFERENCE NO. 32

SHEET 27 OF 34

NOTES RHOADES
 H.C. O'DONNELL
 R.C. RHOADES

DATE 9/7/18
 WEATHER CLOUDY
 TEMP. 65°

ROUTE SR 281
 COUNTY HENRY
 TOWNSHIP RICHFIELD
 SECTION 27

DWG BY NIESE PID PAVETRAIN

T 4 N R 8 E

TYPE MONUMENT 5/8" IPIN

~~ON SURFACE~~ - BELOW 3"

OFFSET 7.7' TO RT EDGE PAVEMENT RT

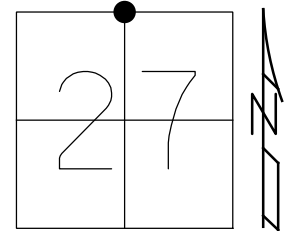
STATION: 814+32

HORIZ.DATUM: NAD83(2011)

GEOID: 2012A

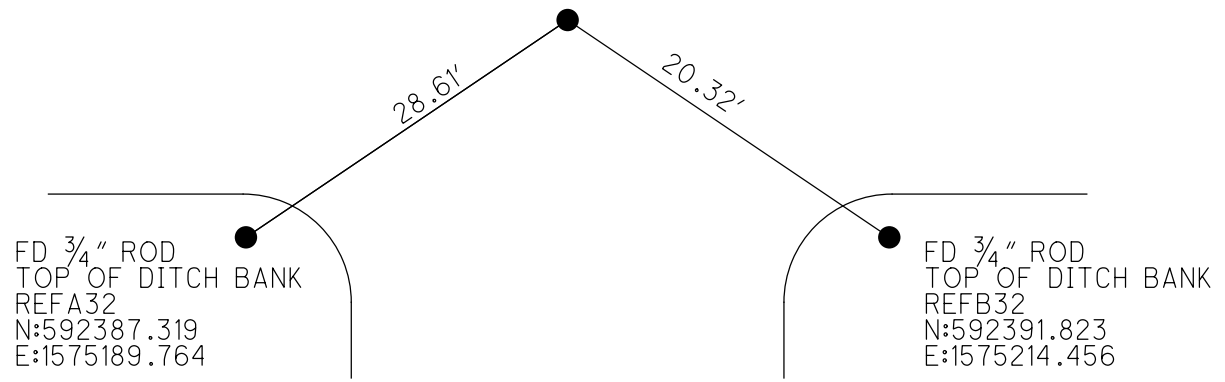
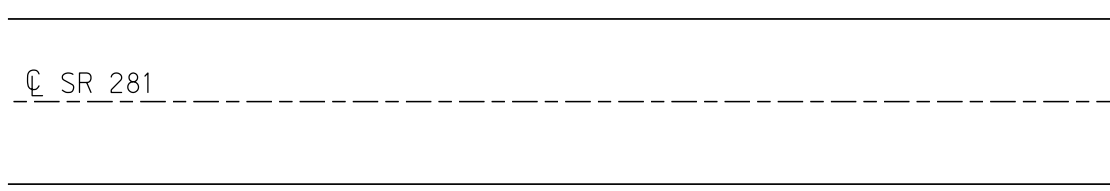
GRID: NORTHING: 592410.579

EASTING: 1575206.585



RECORD:
 N¹/₄ COR SEC 27
 CORNER LOST, RE-ESTABLISHED MIDWAY
 BETWEEN NE&NW COR OF SEC 27
 PLACED ⁵/₈"x18" IPIN
 P.K.'S 15' NE&NW
 HENRY COUNTY, 1979

RECORD:
 FD 5/8" IPIN
 6" DOWN
 LEANING SOUTH
 6/2/98, MC
 FD 5/8" IPIN
 3" DOWN
 9/7/18, JFO
 7/25/19, JMR



O.D.O.T. DISTRICT 2 SURVEY OFFICE (USE ONLY)

PERSONNEL

REFERENCE NO. 33

SHEET 28 OF 34

NOTES RHOADES DATE 9/7/18
 H.C. O'DONNELL WEATHER CLOUDY
 R.C. RHOADES TEMP. 65°

ROUTE SR 281
 COUNTY HENRY
 TOWNSHIP RICHFIELD
 SECTION 26
 T 4 N R 8 E

DWG BY NIESE PID PAVETRAN

TYPE MONUMENT P.K./WASHER

ON SURFACE - ~~BELOW~~ ON

OFFSET \odot PAVEMENT 5.2' ~~±~~ : RT

4.5' TO RT EDGE PAVEMENT

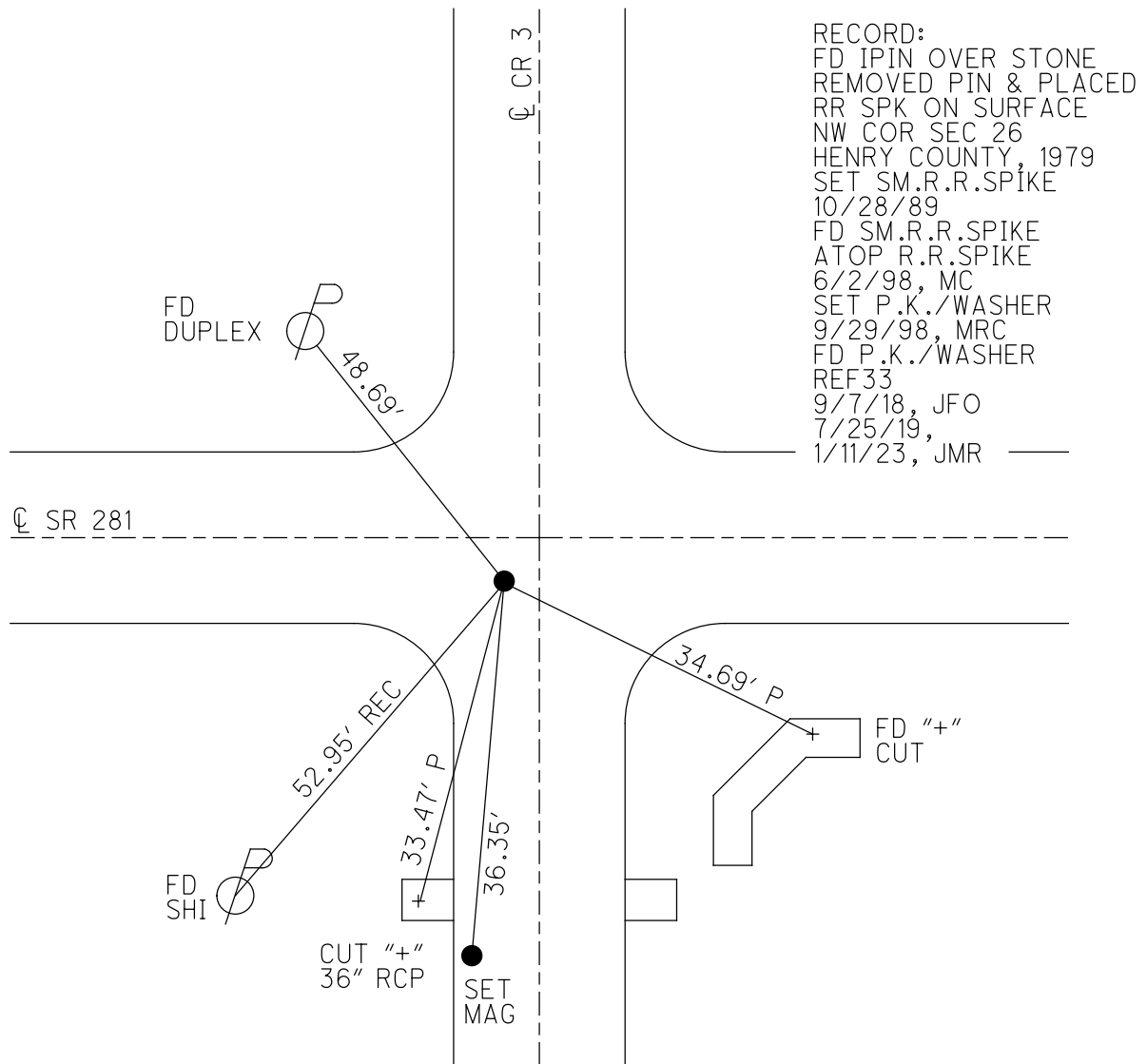
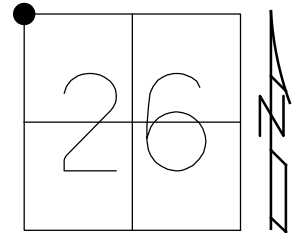
STATION: 840+91

HORZ.DATUM: NAD83(2011)

GEOID: 2012A

GRID: NORTHING: 592383.286

EASTING: 1577861.760

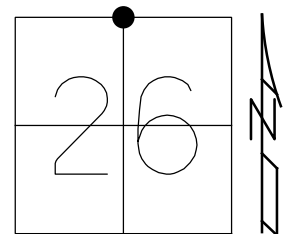


RECORD:
 FD IPIN OVER STONE
 REMOVED PIN & PLACED
 RR SPK ON SURFACE
 NW COR SEC 26
 HENRY COUNTY, 1979
 SET SM.R.R.SPIKE
 10/28/89
 FD SM.R.R.SPIKE
 ATOP R.R.SPIKE
 6/2/98, MC
 SET P.K./WASHER
 9/29/98, MRC
 FD P.K./WASHER
 REF 33
 9/7/18, JFO
 7/25/19,
 1/11/23, JMR

O.D.O.T. DISTRICT 2 SURVEY OFFICE (USE ONLY)

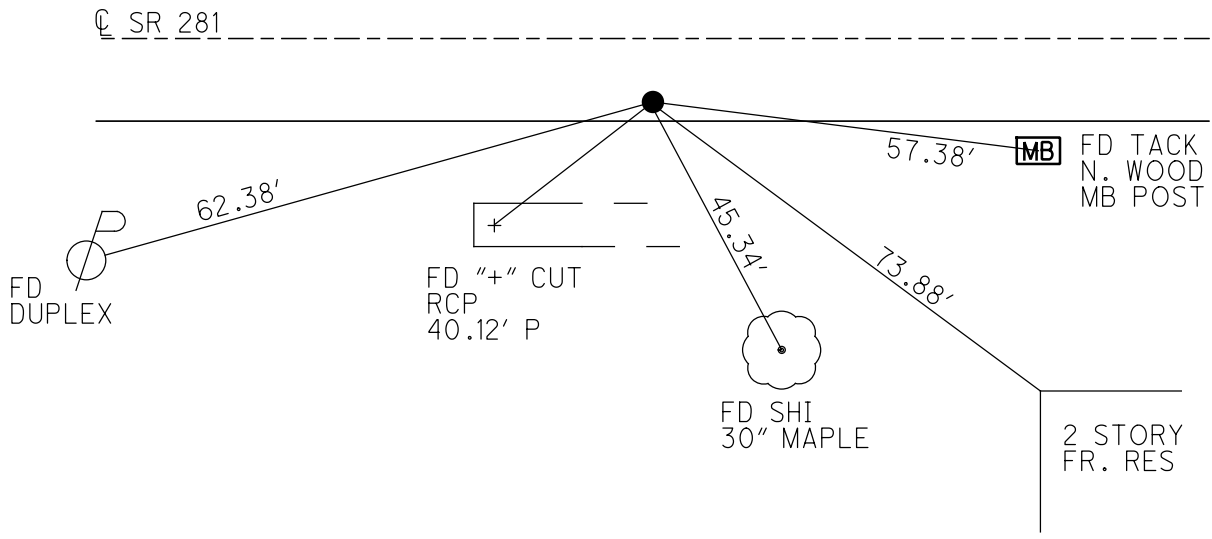
PERSONNEL _____ REFERENCE NO. 34 SHEET 29 OF 34
 NOTES RHOADES DATE 9/7/18 ROUTE SR 281
 H.C. O'DONNELL WEATHER CLOUDY COUNTY HENRY
 R.C. RHOADES TEMP. 69° TOWNSHIP RICHFIELD
 DWG BY NIESE PID PAVETRAIN SECTION 26
 T 4 N R 8 E

TYPE MONUMENT SM.R.R.SPIKE
 ON SURFACE - ~~BELOW~~ ON
 OFFSET 1.6' TO RT EDGE PAVEMENT
 STATION: 867+60



HORZ.DATUM: NAD83(2011) GEOID: 2012A
 GRID: NORTHING: 592370.588 EASTING: 1580527.030

RECORD:
 N¹/₄ CORNER SEC 26
 FD IPIPE OVER STONE
 REMOVED PIPE AND PLACED
 RR SPIKE OVER STONE
 HENRY CO., 1979
 SET SM.R.R.SPIKE
 10/28/86
 FD SM.R.R.SPIKE
 ATOP R.R.SPIKE
 6/2/98, MC
 SET P.K./WASHER
 9/29/98, MRC
 FD SM.R.R.SPIKE
 REF34
 9/7/18, JFO
 7/25/19,
 1/11/23, JMR



O.D.O.T. DISTRICT 2 SURVEY OFFICE (USE ONLY)

PERSONNEL _____ REFERENCE NO. 35 SHEET 30 OF 34
 NOTES RHOADES DATE 9/7/18 ROUTE SR 281
 H.C. O'DONNELL WEATHER CLOUDY COUNTY HENRY
 R.C. RHOADES TEMP. 69° TOWNSHIP RICHFIELD
 DWG BY NIESE PID PAVETRAN SECTION 25
 T 4 N R 8 E

TYPE MONUMENT R.R.SPIKE

~~ON SURFACE~~ - BELOW 1"

OFFSET \varnothing PAVEMENT 10.0' ~~LT~~ : RT

ON TO RT EDGE PAVEMENT

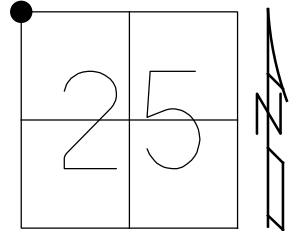
STATION: 899+27

HORIZ.DATUM: NAD83(2011)

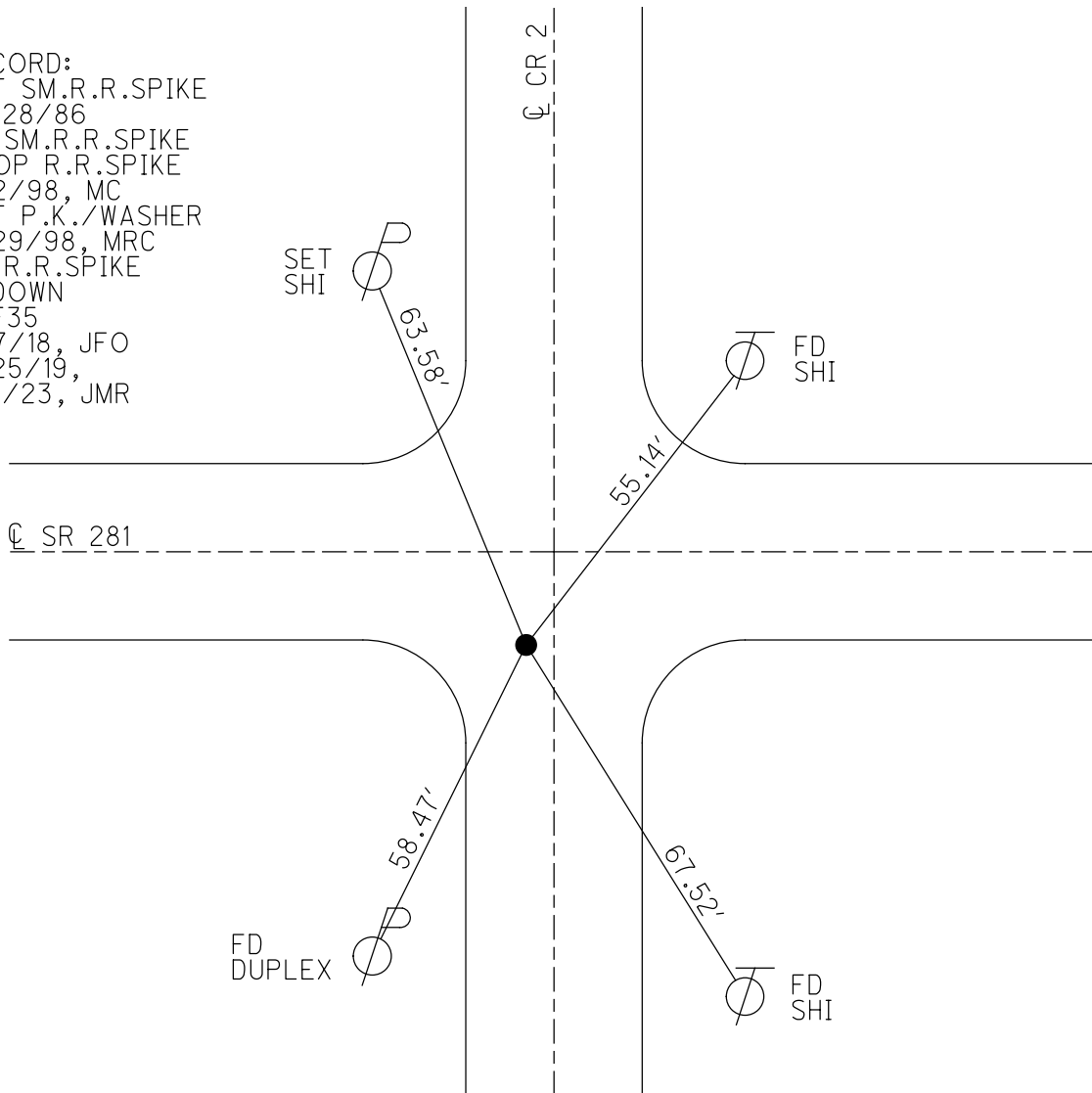
GEOID: 2012A

GRID: NORTHING: 592359.117

EASTING: 1583189.767



RECORD:
 SET SM.R.R.SPIKE
 10/28/86
 FD SM.R.R.SPIKE
 ATOP R.R.SPIKE
 6/2/98, MC
 SET P.K./WASHER
 9/29/98, MRC
 FD R.R.SPIKE
 1" DOWN
 REF35
 9/7/18, JFO
 7/25/19,
 1/11/23, JMR



O.D.O.T. DISTRICT 2 SURVEY OFFICE (USE ONLY)

PERSONNEL

REFERENCE NO. 36

SHEET 31 OF 34

NOTES RHOADES DATE 9/7/18

H.C. O'DONNELL WEATHER CLOUDY

R.C. RHOADES TEMP. 69°

ROUTE SR 281

COUNTY HENRY

TOWNSHIP RICHFIELD

SECTION 25

DWG BY NIESE PID PAVETRAIN

T 4 N R 8 E

TYPE MONUMENT SM.R.R.SPIKE

~~ON SURFACE~~ - BELOW 2"

OFFSET C PAVEMENT 10.6' ~~RT~~ : RT

0.6' TO RT EDGE PAVEMENT

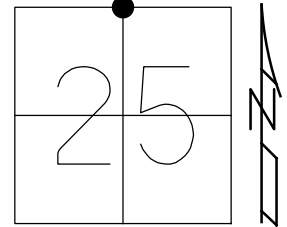
STATION: 920+83

HORZ.DATUM: NAD83(2011)

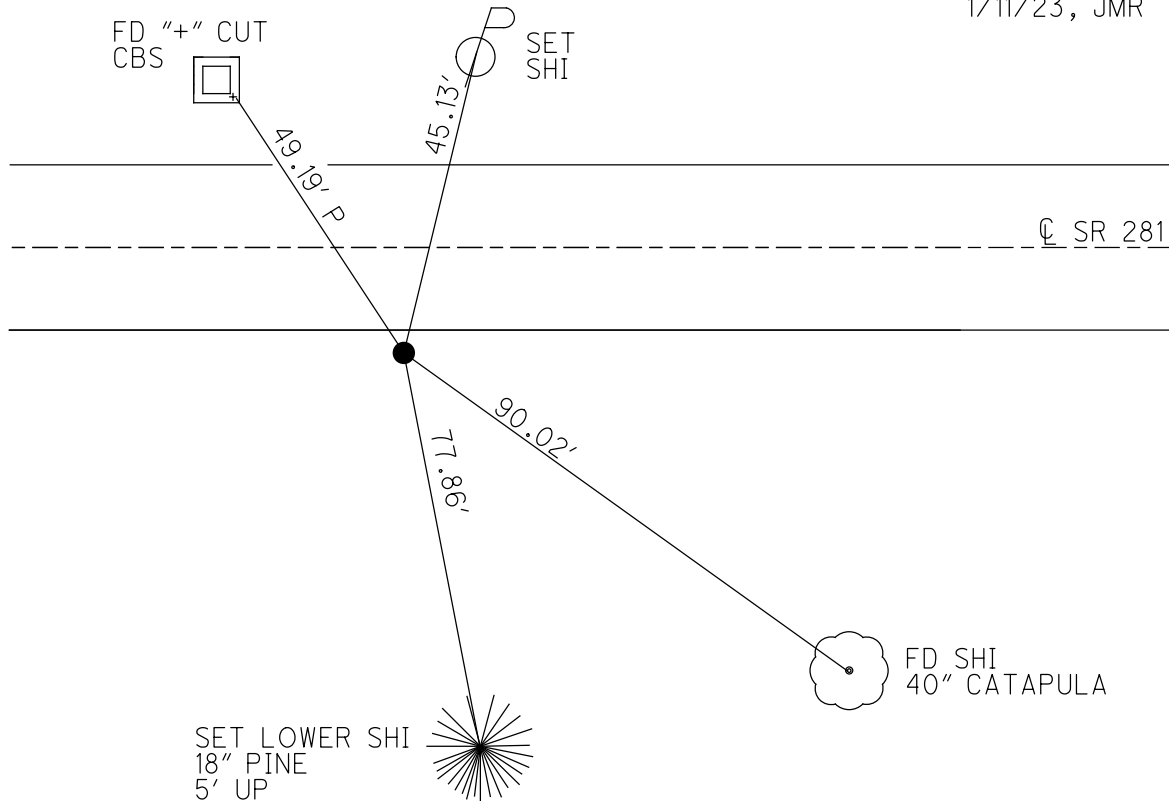
GEOID: 2012A

GRID: NORTHING: 592334.598

EASTING: 1585845.833



RECORD:
 FD SM.R.R.SPIKE
 ATOP R.R.SPIKE
 6/2/98, MC
 FD SM.R.R.SPIKE
 2" DOWN
 REF36
 9/7/18, JFO
 7/25/19,
 1/11/23, JMR



O.D.O.T. DISTRICT 2 SURVEY OFFICE (USE ONLY)

PERSONNEL

REFERENCE NO. 36 A

SHEET 32 OF 34

NOTES CANTERBURY

DATE 6/2/98

ROUTE SR 281

H.C. ROUSOS

WEATHER WINDY

COUNTY HENRY

R.C. NUHFER

TEMP. 75°

TOWNSHIP RICHFIELD

SECTION 25

DWG BY NIESE

PID CHIP_2

T 4 N R 8 E

TYPE MONUMENT MONBOX

ON SURFACE - ~~BELOW~~ ON

OFFSET 11.0' ~~±~~ : RT

0.3' LT TO RT EDGE PAVEMENT

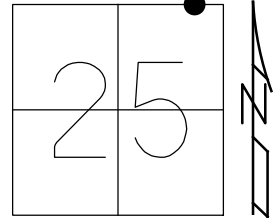
STATION: 936+03.62

HORIZ.DATUM: NAD83(2011)

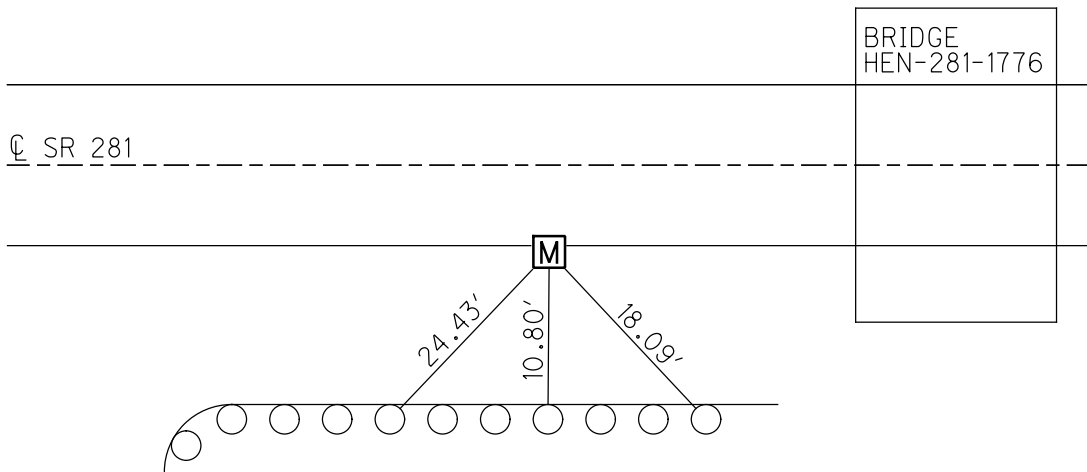
GEOID: 2012A

GRID: NORTHING: 592318.170

EASTING: 1587371.210



RECORD:
 FD MONBOX
 W/BOLT
 SHOT TOP CTR LID
 REFA36
 9/7/18, JFO
 7/25/19, JMR



SET SHI'S
 GR POSTS
 ALL MEAS. TO
 CTR OF LID

O.D.O.T. DISTRICT 2 SURVEY OFFICE (USE ONLY)

PERSONNEL _____

REFERENCE NO. 36 B

SHEET 33 OF 34

NOTES CANTERBURY

DATE 6/2/98

ROUTE SR 281

H.C. ROUSOS

WEATHER WINDY

COUNTY HENRY

R.C. NUHFER

TEMP. 75°

TOWNSHIP RICHFIELD

SECTION 25

DWG BY NIESE

PID CHIP_2

T 4 N R 8 E

TYPE MONUMENT MONBOX

ON SURFACE - ~~BELOW~~ ON

OFFSET C PAVEMENT 9.5' ~~LT~~ : RT

0.9' TO RT EDGE PAVEMENT

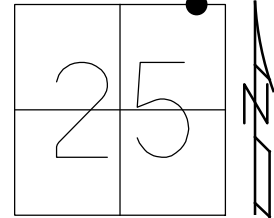
STATION: 938+83.72

HORIZ.DATUM: NAD83(2011)

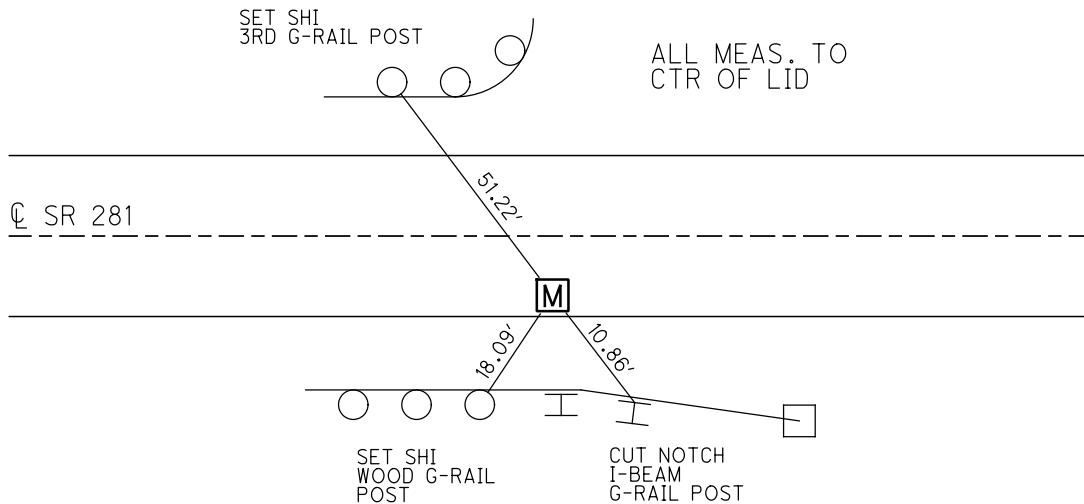
GEOID: 2012A

GRID: NORTHING: 592316.625

EASTING: 1587651.079



RECORD:
 FD MONBOX
 COVERED W/ ASPHALT
 SHOT CTR LID
 REFB36
 9/7/18, JFO
 7/25/19, JMR



O.D.O.T. DISTRICT 2 SURVEY OFFICE (USE ONLY)

PERSONNEL

REFERENCE NO. 37

SHEET 34 OF 34

NOTES RHOADES

DATE 9/7/18

ROUTE SR 281

H.C. O'DONNELL

WEATHER CLOUDY

COUNTY HENRY

R.C. RHOADES

TEMP. 69°

TOWNSHIP RICHFIELD

DWG BY NIESE PID CHIP_2

SECTION 25

T 4 N R 8 E

TYPE MONUMENT MAG/WASHER

ON SURFACE - BELOW ON

OFFSET ☉ PAVEMENT - LT : RT

- TO - EDGE PAVEMENT

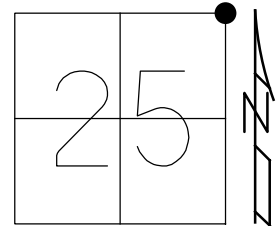
STATION: 947+59

HORIZ.DATUM: NAD83(2011)

GEOID: 2012A

GRID: NORTHING: 592312.219

EASTING: 1588509.764



RECORD:
 FD R.R.SPIKE
 1/8/75, TOMSIC
 FD SM.R.R.SPIKE
 5/22/90, CL
 7/2/12, DCH
 SET MAG/WASHER
 NEWREF1
 9/24/12, DCH
 FD MAG/WASHER
 REF37
 9/7/18, JFO

