

O.D.O.T. DISTRICT 2 SURVEY OFFICE (USE ONLY)

PERSONNEL

REFERENCE NO. 1

SHEET 1 OF 20

NOTES RHOADES DATE 6-7-18
 H.C. O'DONNELL WEATHER CLOUDY
 R.C. TRENKA TEMP. 65°

ROUTE SR 281
 COUNTY HENRY
 TOWNSHIP FLAT ROCK
 SECTION 30
 T 4 N R 6 E

DWG BY JAMES PID 102763

TYPE MONUMENT R.R.SPIKE

~~ON SURFACE~~ - BELOW 1"

OFFSET Q PAVEMENT 6' (CR 19) LT : ~~RT~~

- TO - EDGE PAVEMENT

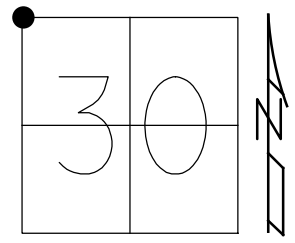
STATION: 0+00 (SR 108)

HORZ.DATUM: NAD83 2011

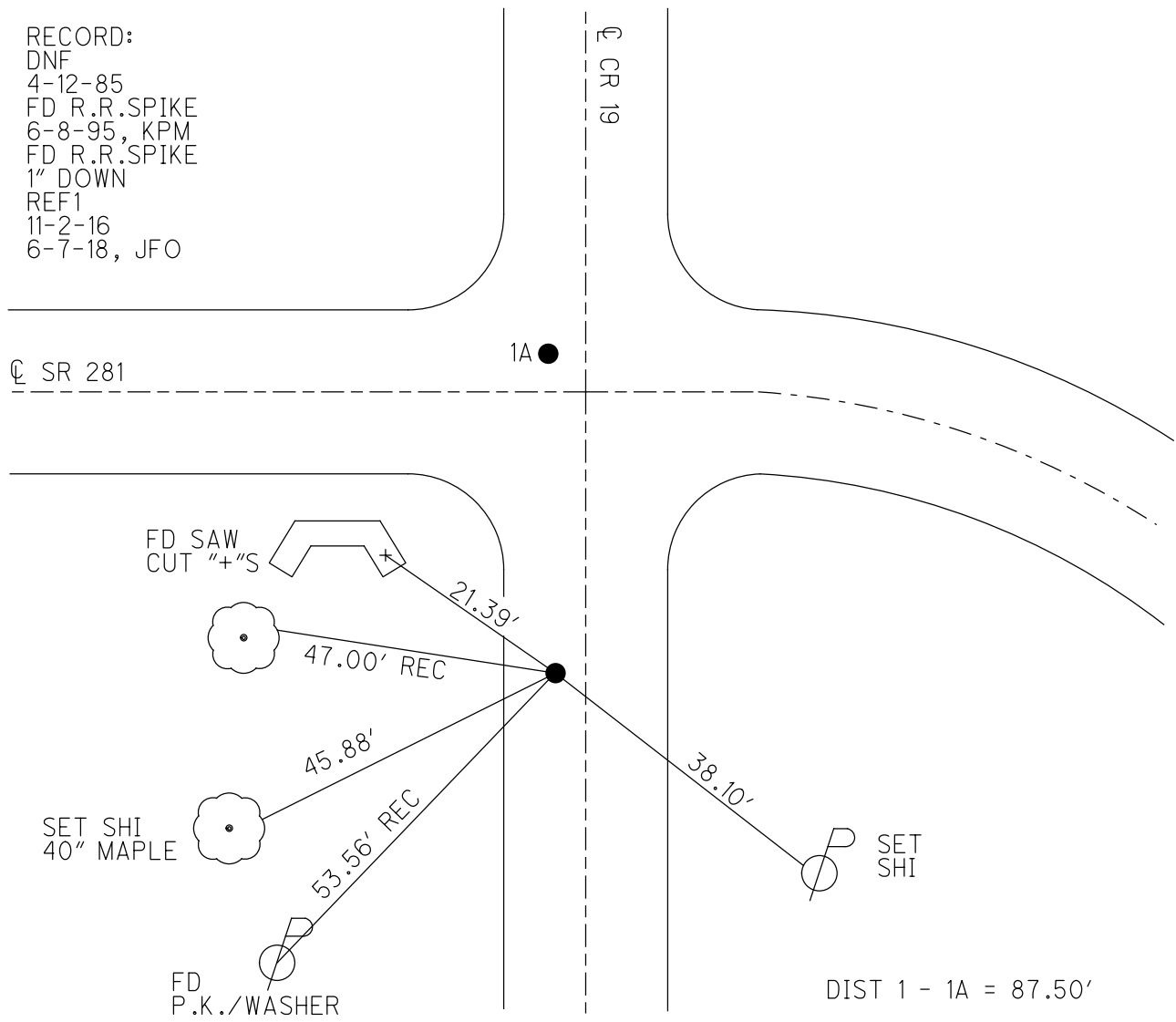
GEOID: NAVD88 2012A

GRID: NORTHING: 593226.279

EASTING: 1493773.003



RECORD:
 DNF
 4-12-85
 FD R.R.SPIKE
 6-8-95, KPM
 FD R.R.SPIKE
 1" DOWN
 REF1
 11-2-16
 6-7-18, JFO



DIST 1 - 1A = 87.50'

Resurveyed 2009

O.D.O.T. DISTRICT 2 SURVEY OFFICE

PERSONNEL

REFERENCE NO. 1

SHEET 1 OF 13

NOTES Huss

H.C. VAN DUSEN

R.C. MOSER

DATE 6-8-95

WEATHER CLOUDY

TEMP. +62° F

ROUTE S.R. 281

COUNTY HENRY

TOWNSHIP FLATROCK

SECTION 30

T4 N R 4 E

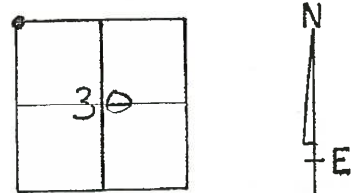
TYPE MONUMENT RR SPK

ON SURFACE - BELOW YES

LEFT-☉ PAV'T. - RIGHT 1.5' S.R. 281

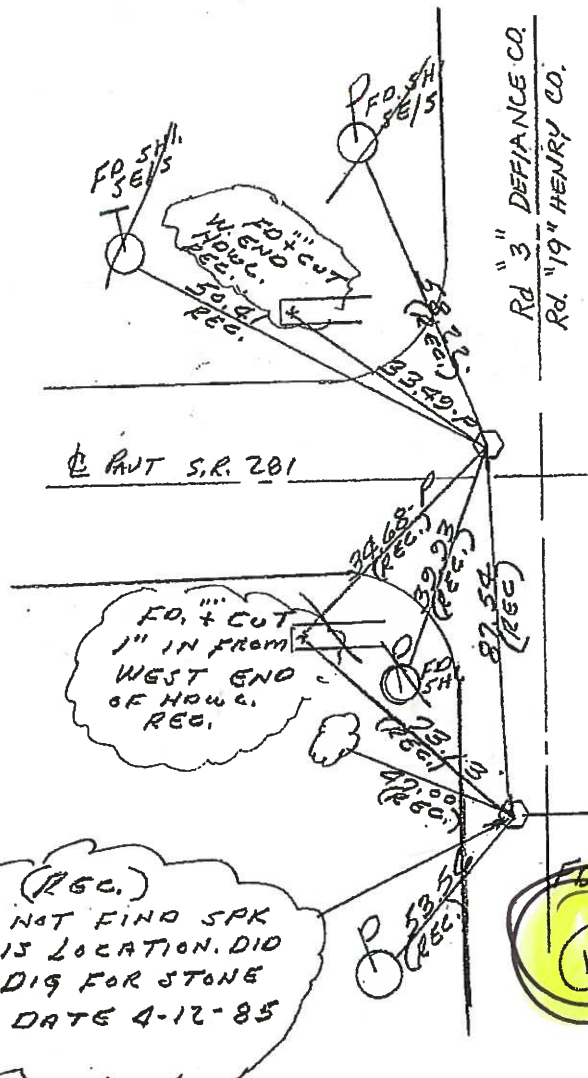
TO EDGE PAVEMENT 6' W. OF ☉ PAVT CO. RD.

S.L.M. 0 + 0 0

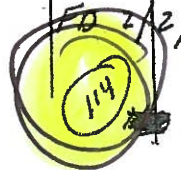


DID NOT COVER
8-24-95
BVD

COULD NOT LOCATE 2/2/09
REFERENCES DESTROYED
ATTEMPTED TO DIG FOR
POINT. FROM METAL DET.
STRIKE, DNF.
8-20-09
KEVIN MOSER



(REC.)
DID NOT FIND SPK
@ THIS LOCATION. DID
NOT DIG FOR STONE
THIS DATE 4-12-85



RECORD:
SEC. 19
SEC. 30
Fd. R.R. SPK OVER STONE
ALSO Fd. 1/2" x 7" Bolt Along W/S
OF STONE, PLACED CTR punched
R.R. spk. over stone 2'
EAST OF WEST E.P.
BY COUNTY

O.D.O.T. DISTRICT 2 SURVEY OFFICE

PERSONNEL _____

REFERENCE NO. 1

SHEET 1 OF 13

NOTES Huss

H.C. VAN DUSEN

DATE 6-8-95

ROUTE S.R. 281

R.C. MOSEK

WEATHER CLOUDY

COUNTY HENRY

TEMP. +62° F

TOWNSHIP FLAT ROCK

SECTION 30

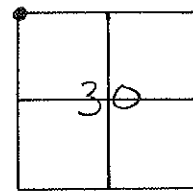
T4 N R 6 E

TYPE MONUMENT RR SPK

ON SURFACE - BELOW YES

LEFT - ☉ PAVT. - RIGHT 1.5' S.R. 281
TO EDGE PAVEMENT 6' W. OF ☉ PAVT CO. RD.

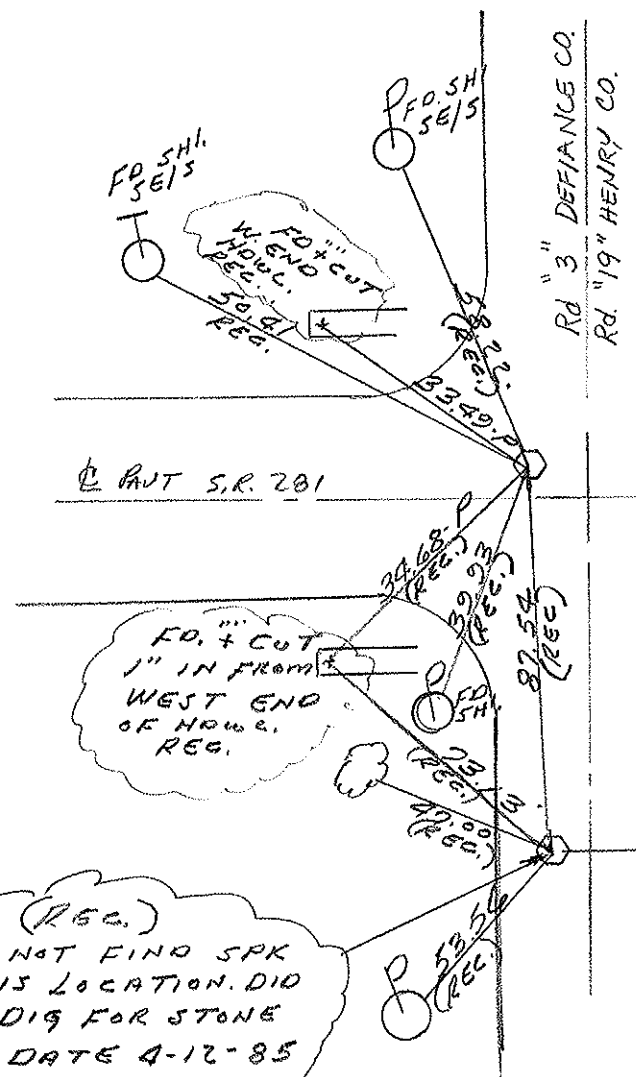
S.L.M. ○ + ○ ○



DID NOT COVER
8-24-95
BVD

Could Not Locate 2/2/09
 REFERENCE DESTROYED
 ATTEMPTED TO DIG FOR ROUT
 FROM METAL DET. STRIKE
 DNF - 8-20-09

KEVIN MOSER



☉ PAVT S.R. 281

FD. + CUT
1" IN FROM
WEST END
OF HOWE.
REG.

(REG.)
DID NOT FIND SPK
@ THIS LOCATION. DID
NOT DIG FOR STONE
THIS DATE 4-12-85

SEC. 19 RECORD
SEC. 30
FD. R.R. SPK OVER STONE
ALSO FD. 1/2" x 7" Bolt ALONG W/S
OF STONE, PLACED CTR punched
R.R. SPK. over stone 2'
EAST OF WEST E.P.
BY COUNTY

County HENRY S.R. 281

Township FLATROCK

Section 30

T4N, R6E

Personnel Hoffman

LOEMRKE H.C.

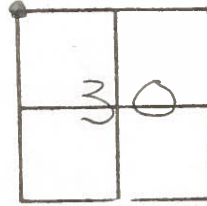
BARNHISEL R.C.

1

Date 4-12-85

Weather P. Clear

Temp. 60°



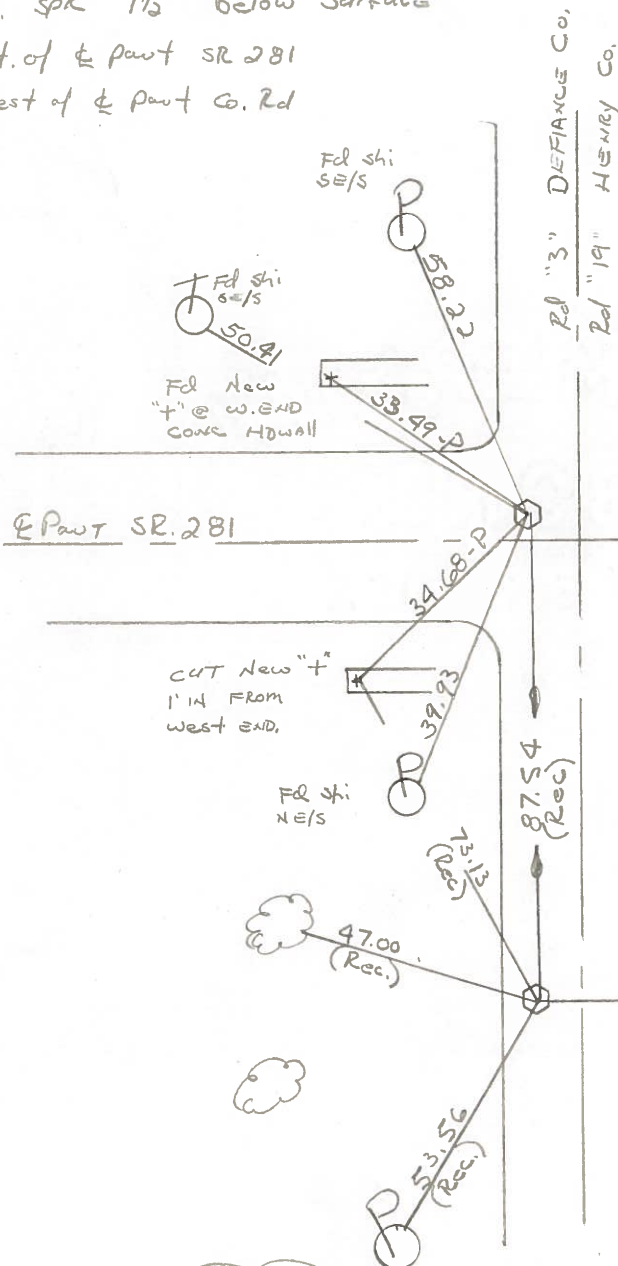
SKM = 0 + 00

Fd R.R. spk 1 1/2" Below Surface

1.5' Lt. of & part SR 281

6' West of & part Co. Rd

DID NOT COVER
5-8-85
MD13



Sec 19
Sec 30.

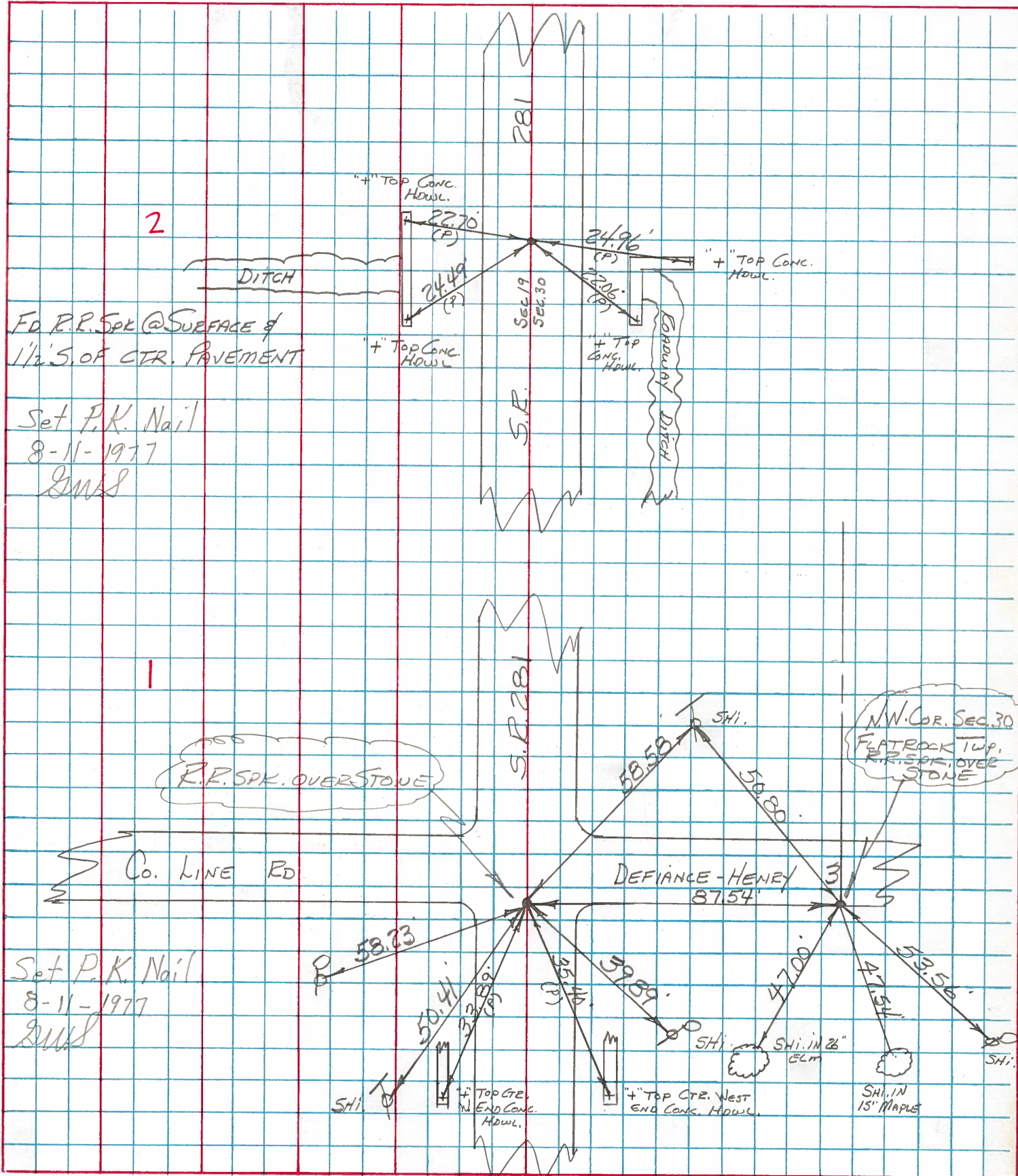
Record:
Fd. R.R. SPK OVER STONE.
Also Fd. 1/2" x 7" BOLT ALONG W/S
of STONE. PLACED CTR. PUNCHED
R.R. SPK OVER STONE.
2' EAST of WEST E.P.
(BY COUNTY)

DID NOT FIND SPK @
THIS LOCATION. DID NOT
DIG FOR STONE THIS DATE.

PERSONNEL	TITLE	PERSONNEL	TITLE
BURNSIDE			
SMITH			
BOWERS			
MEAD			

COUNTY HENRY DATE 6-24-77
 S. R. 281 WEATHER Cloudy
 SEC. _____ TEMP. +74°

DESCRIPTION _____ LEFT _____ CENTER LINE _____ RIGHT _____ JOB NO. _____



County HENRY S.R. 281

Date 6-24-77

Township FLATROCK

Weather CLOUDY

Section 30

Temp. +74°

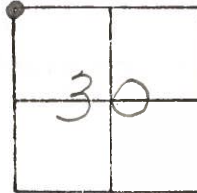
T4N, R6E

Personnel BURNSIDE

SMITH

BOWERS

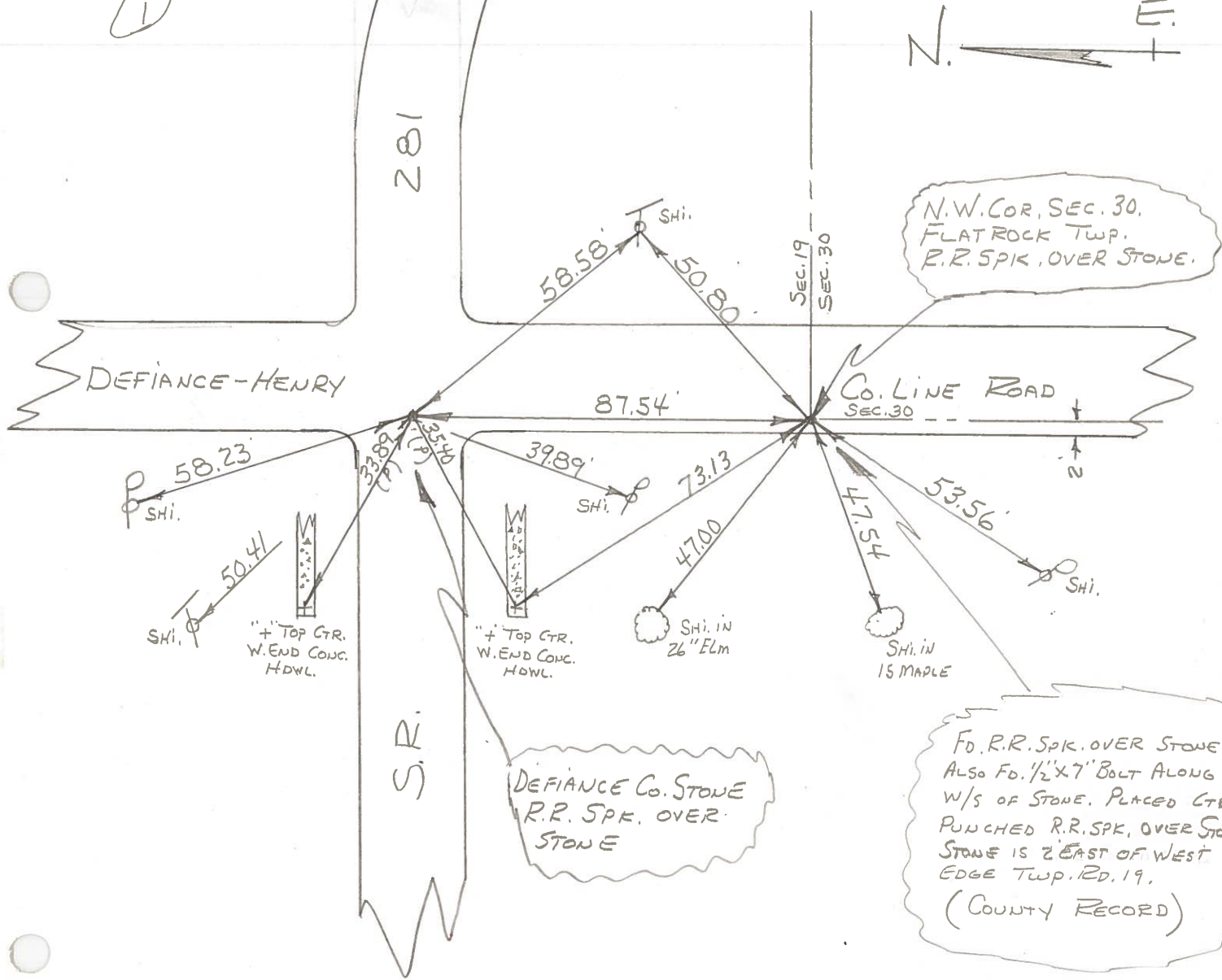
MEAD



①



281



N.W. COR. SEC. 30.
FLATROCK TWP.
R.R. SPK. OVER STONE.

DEFIANCE Co. STONE
R.R. SPK. OVER
STONE

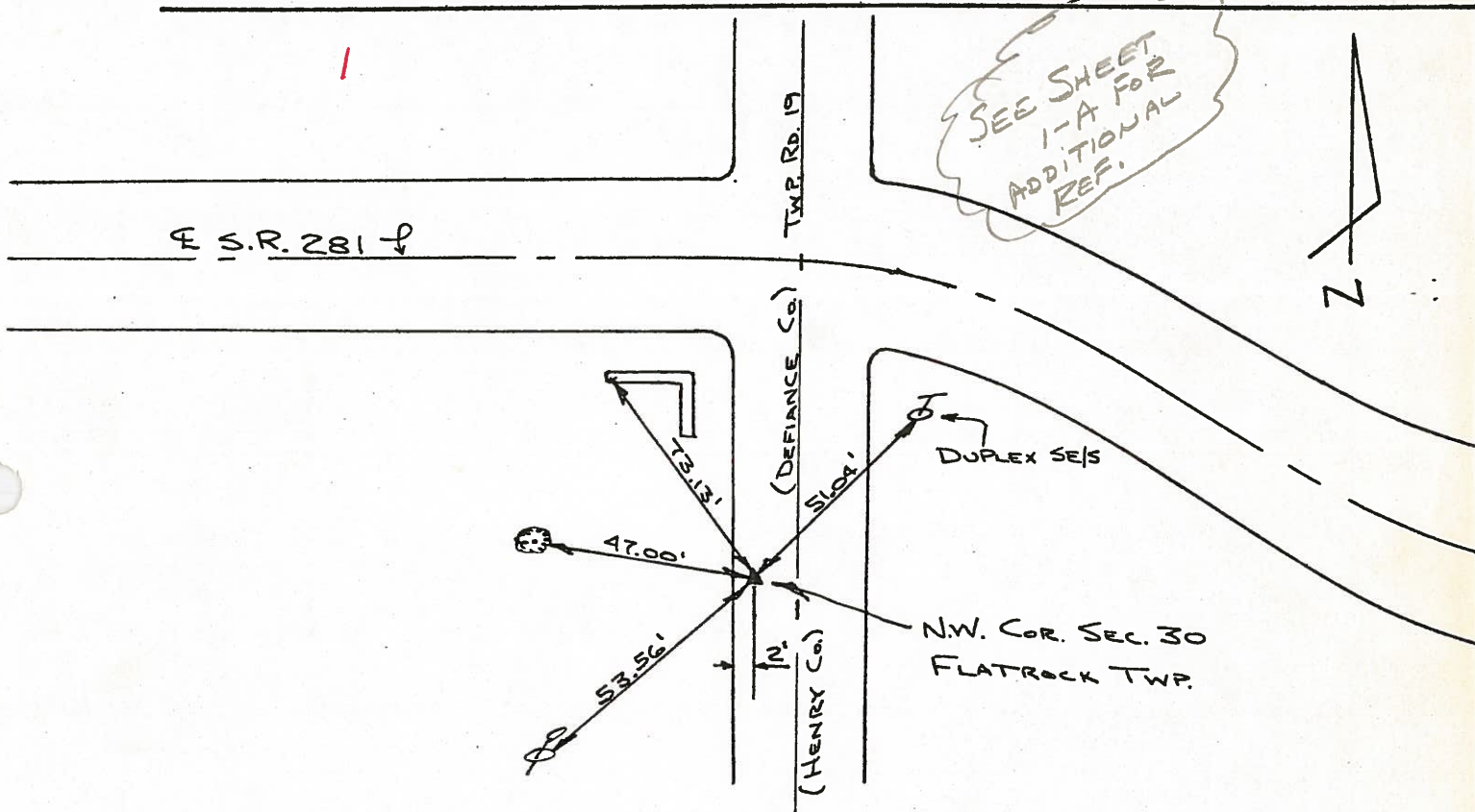
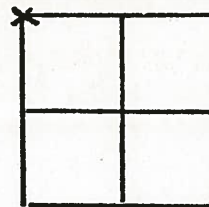
Fd. R.R. SPK. OVER STONE,
ALSO Fd. 1/2" X 7" BOLT ALONG
W/S OF STONE. PLACED CTR.
PUNCHED R.R. SPK. OVER STONE.
STONE IS 2' EAST OF WEST
EDGE TWP. RD. 19.
(COUNTY RECORD)

DISTRICT 2 SURVEY OFFICE
HENRY COUNTY ENGINEER'S OFFICE
CORNER STONE RECOVERY PROGRAM

Sht. 1 of 13
 S.R. 281

COUNTY _____
 TOWNSHIP FLATROCK
 SECTION 30
 T4N, R6E
 PERSONNEL JG
 BB
 SS
 MS

DATE 7-22-76
 WEATHER CLEAR & WARM
 TEMP _____



SEE SHEET
 1-A FOR
 ADDITIONAL
 REF.



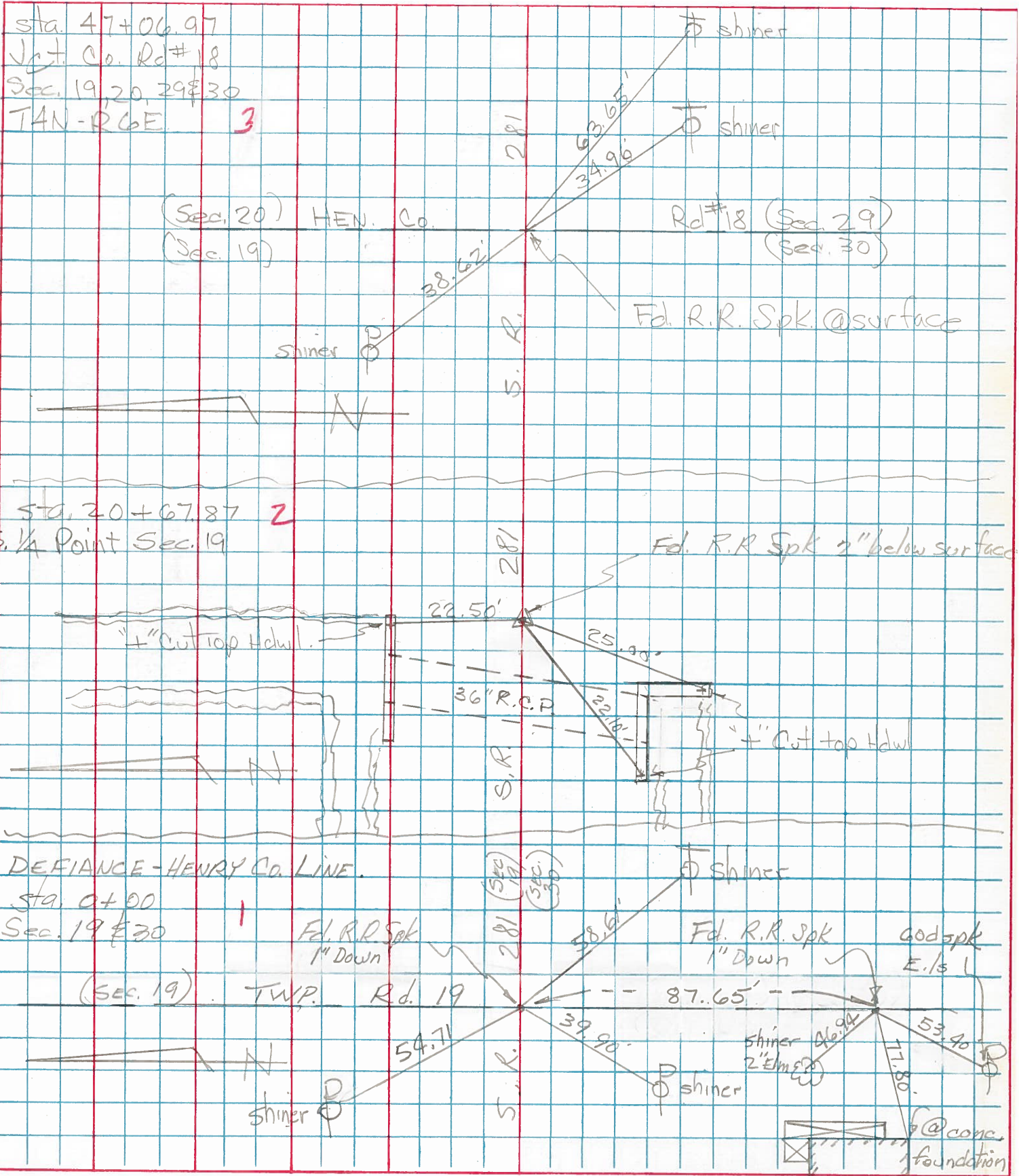
FOUND R.R. SPK. OVER STONE. ALSO FOUND 1/2" X 7" BOLT ALONG W/S OF STONE. PLACED CTR. PUNCHED R.R. SPK. OVER STONE. STONE IS 2' EAST OF WEST EDGE TWP. RD. 19. P.K.'S 6'N. & 6'E.

Copied:
 Painted:

S. R. 281 HENRY

PERSONNEL	TITLE	PERSONNEL	TITLE	COUNTY	DATE	WEATHER	TEMP.
TOMSIG				HENRY	Oct. 30, 1971		
Newser				281			
Vann				Flatrock TWP.			
Granata							

DESCRIPTION	LEFT	CENTER LINE	RIGHT	JOB NO.
-------------	------	-------------	-------	---------



PERSONNEL TITLE PERSONNEL TITLE

COUNTY Henry DATE 11-29-57

S. R. #281 WEATHER

SEC. "H" TEMP.

DESCRIPTION Henry-Defiance Co. line East JOB NO.

	LEFT	CENTER LINE	RIGHT
#1-2	Co. line N. & S. Stones.		
#1	North stone Ref. Found 11/29/57 Iron Bolt.		16.45' N.W. To Cross S.E. Cor. N. Br. Rail 18.55' S.W. ✓ ✓ N.E. ✓ S. Br. Rail 58.63' S.E. Nail & Shi. in P. Pole 87.65' S. To South stone.
		↕ ① ↕	
#2	South stone Ref. Iron Bolt. (Did not find)		53.40' S.W. To 60° spk. E. side P. Pole 77.80' S.W. To S.E. Cor. Conc. House Fd. 73.69' N.W. To ⊗ on face of S.E. Cor. S. Br. Rail.
		⊗	
#3	1/4 stone Found 11/29/57		22.50' N.N.E. To ⊗ on E. end N. Hdwl. 25.00' S.S.W. To ⊗ on S. end S. Hdwl. 22.10' S.W. To ⊗ on W. end S. Hdwl.
		②	
#4	S.E. Cor. Sec. 19 Flatrock Twp. Stone - Iron Bolt Co. Rd #18 5/11/64 Note: for New Ties See Sheet #24		22.36' S.W. To ⊗ on S.W. Wing wall 158.5' N.W. To ⊗ on N.E. Wing wall 45.00' S.W. To near side of 2" pipe in bank 47.77' N.W. To near side of 2" pipe in bank 37.66' N.W. To 60° spk. in S. Side P. Pole
		③	
#5	S. 1/4 stone Sec. 20 Flatrock Twp. Sta. 73+82.1		36.60' N.E. To Center Iron pipe 36.95' S.E. To Center Iron pipe 42.70' S.W. To Center Iron pipe
		④	
		O.K. 5/11/64	28.67 N. To Shi. P. Pole 64.44 S.W. To Shi. in T. Pole 97.52 E.S.E. To Shi. in T. Pole