

O.D.O.T. DISTRICT 2 SURVEY OFFICE (USE ONLY)

PERSONNEL

REFERENCE NO. 3

SHEET 4 OF 20

NOTES RHOADES DATE 6-7-18
 H.C. O'DONNELL WEATHER CLOUDY
 R.C. TRENKA TEMP. 65°

ROUTE SR 281
 COUNTY HENRY
 TOWNSHIP FLAT ROCK
 SECTION 30
 T 4 N R 6 E

DWG BY JAMES PID 102763

TYPE MONUMENT SM R.R.SPIKE

ON SURFACE - ~~BELOW~~ ON _____

OFFSET \varnothing PAVEMENT 1.8' ~~LT~~ : RT

~~TO~~ ~~EDGE PAVEMENT~~

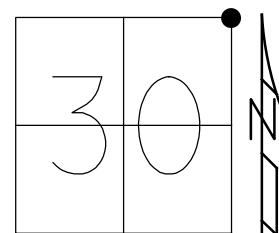
STATION: 47+12.73

HORZ.DATUM: NAD83 2011

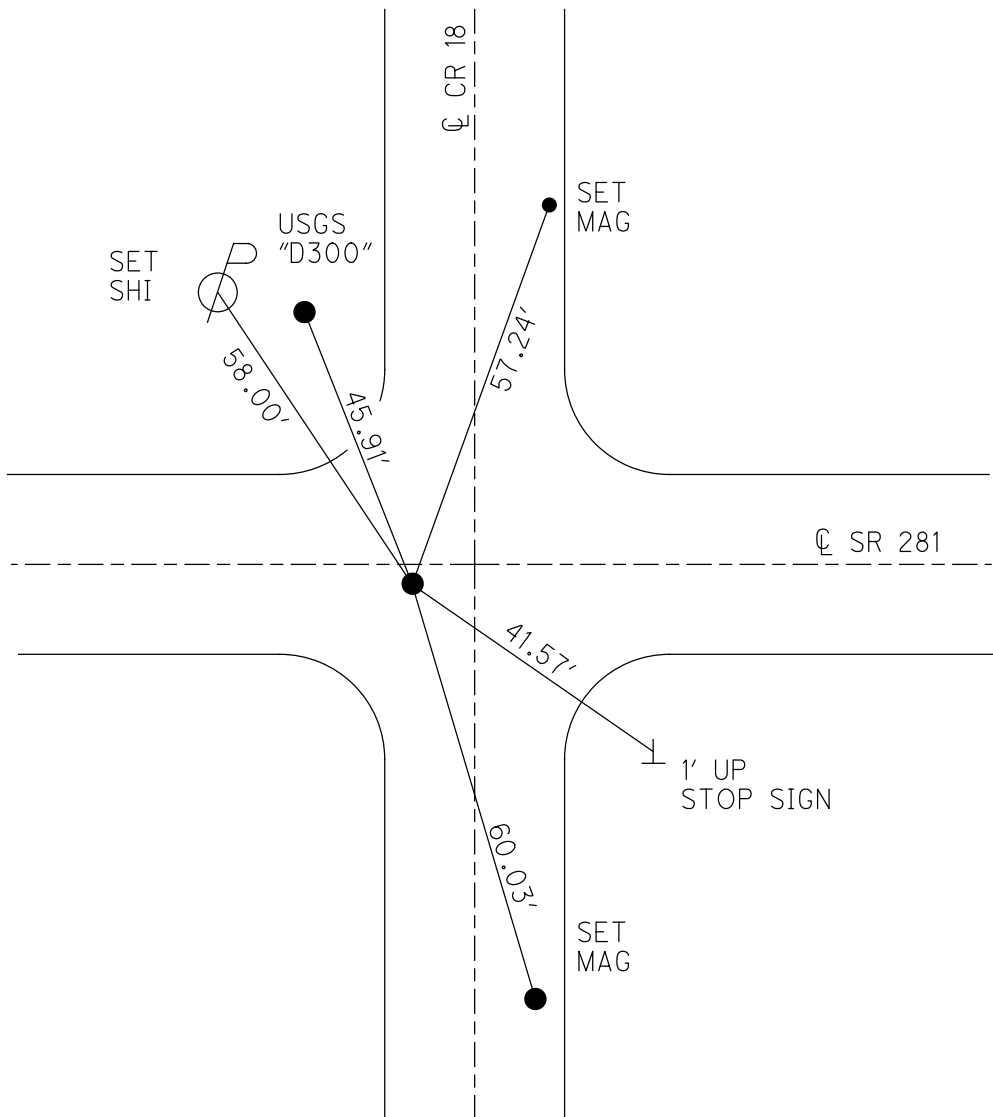
GEOID: NAVD88 2012A

GRID: NORTHING: 593158.721

EASTING: 1498475.442



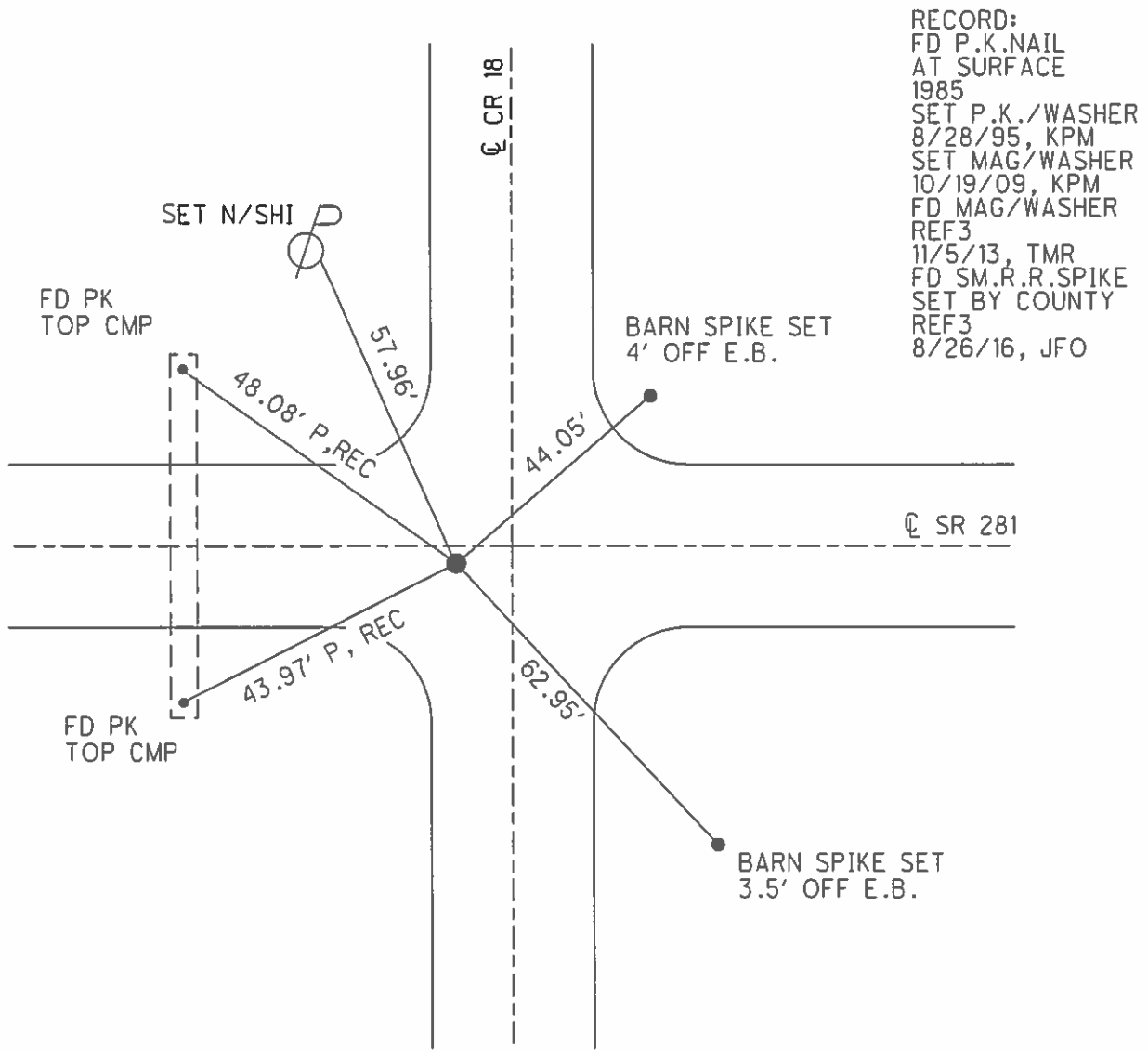
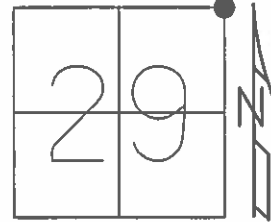
- RECORD:
 FD P.K.NAIL
 1985
 SET P.K./WASHER
 8-28-95, KPM
 FD P.K./WASHER
 8-20-09, KPM
 SET MAG/WASHER
 10-19-09, KPM
 FD MAG/WASHER
 REF3
 11-5-13, TMR
 FD SM R.R.SPIKE
 REF3
 8-26-16
 11-2-16, JFO
 SET MAG/WASHER
 1-10-19, JLL



O.D.O.T. DISTRICT 2 SURVEY OFFICE (USE ONLY)

PERSONNEL	REFERENCE NO. <u>3</u>	SHEET <u>2</u> OF <u>14</u>
NOTES <u>O'DONNELL</u>	DATE <u>8/26/16</u>	ROUTE <u>SR 281</u>
H.C. <u>O'DONNELL</u>	WEATHER <u>FAIR</u>	COUNTY <u>HENRY</u>
R.C. <u>RHOADES</u>	TEMP. <u>75°</u>	TOWNSHIP <u>FLAT ROCK</u>
		SECTION <u>29</u>
		T <u>4</u> N R <u>6</u> E

TYPE MONUMENT SM.R.R.SPIKE
 ON SURFACE - ~~BELOW~~ ON
~~LEFT~~ - Q PAV'T - RIGHT 1.8'
8.2' TO WEST EDGE PAVEMENT (C.R. 18)
 S.L.M. 47+07.21
 GRID: NORTHING: 593158.618 EASTING: 1498475.418



RECORD:
 FD P.K.NAIL
 AT SURFACE
 1985
 SET P.K./WASHER
 8/28/95, KPM
 SET MAG/WASHER
 10/19/09, KPM
 FD MAG/WASHER
 REF3
 11/5/13, TMR
 FD SM.R.R.SPIKE
 SET BY COUNTY
 REF3
 8/26/16, JFO

O.D.O.T. DISTRICT 2 SURVEY OFFICE (USE ONLY)

PERSONNEL

REFERENCE NO. 3

SHEET 2 OF 14

NOTES MOSER

DATE 8-20-09

ROUTE SR 281

H.C. GOLDBURG

WEATHER CLOUDY

COUNTY HENRY

R.C. MOSER

TEMP. +75°

TOWNSHIP FLAT ROCK

SECTION 29

T 4 N R 6 E

TYPE MONUMENT FD. PK/WASHER

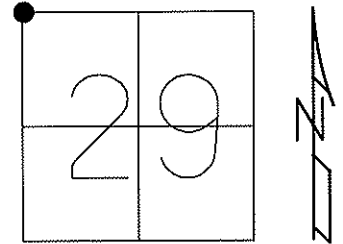
ON SURFACE - ~~BELOW~~ ON SURFACE

~~LEFT~~ - C PAV'T - RIGHT 1.8' RT.

8.2' TO WEST OF SR#18 CL

S.L.M. 47+09 (SV102)

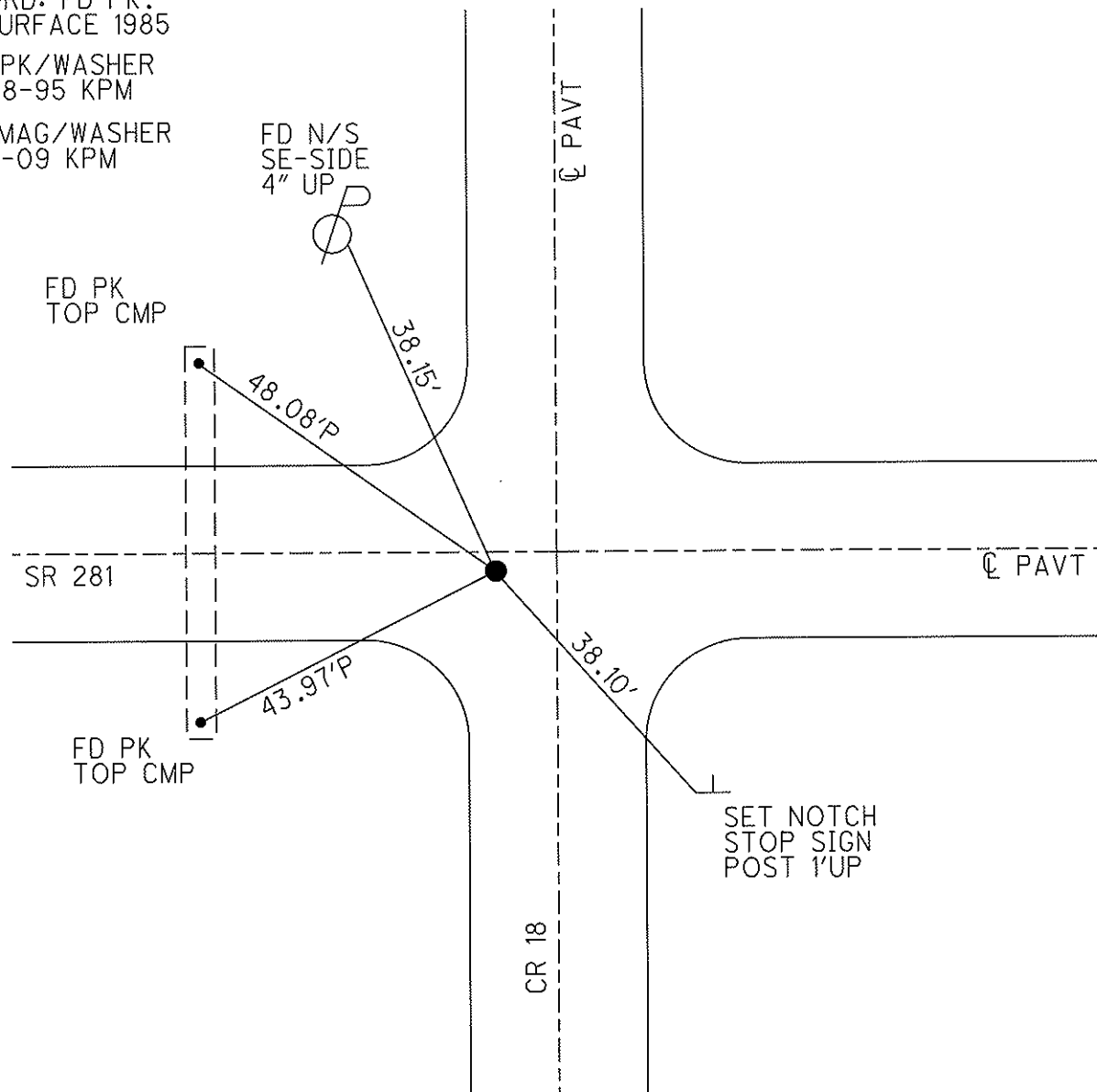
Grid: Northing: 593158.724 Easting: 1498475.380



RECORD: FD PK.
AT SURFACE 1985

SET PK/WASHER
08-28-95 KPM

SET MAG/WASHER
10-19-09 KPM



SET NOTCH
STOP SIGN
POST 1' UP

O.D.O.T. DISTRICT 2 SURVEY OFFICE

PERSONNEL

REFERENCE NO. 3

SHEET 3 OF 13

NOTES HUSS

H.C. VANDUSEN

R.C. MOSER

DATE 6-8-95

WEATHER Cloudy

TEMP. +62°F

ROUTE S.R. 281

COUNTY HENRY

TOWNSHIP FLATROCK

SECTION 29

T4 NR 6 E

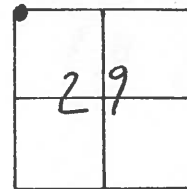
TYPE MONUMENT PK/WASHER

ON SURFACE - BELOW YES

~~LEFT~~ - ~~C~~ PAVT. - RIGHT 1.7' RT

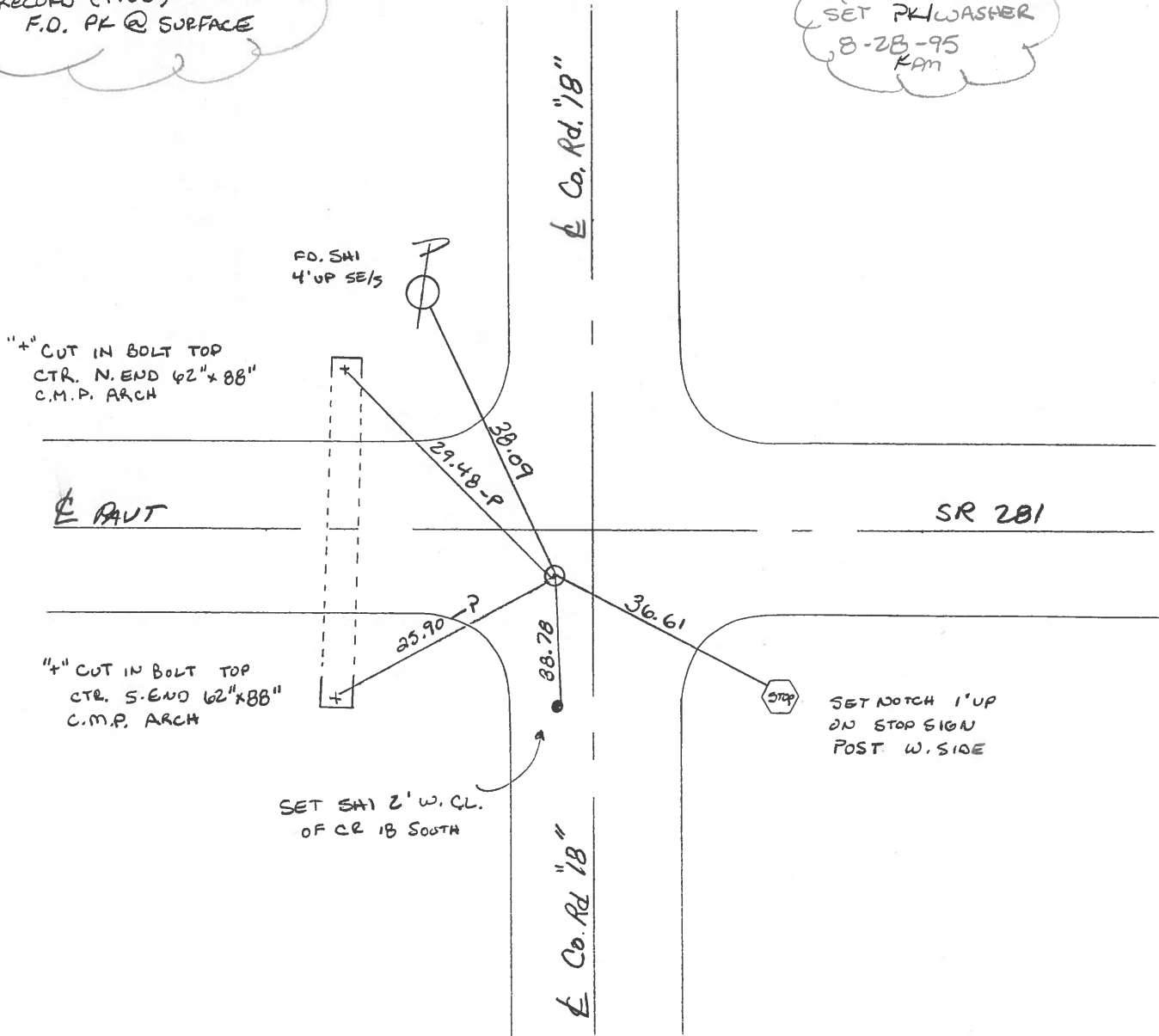
8.3 TO WEST EDGE PAVEMENT OF C PAVT C.R. 18 SOUTH.

S.L.M. 47+08



RECORD (1985)
F.O. PK @ SURFACE

SET PK/WASHER
8-28-95
KAM



County HENRY S.R. 281

Township FLATROCK

Section 29

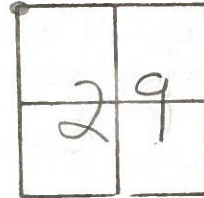
T4N, R6E

Personnel Hoffman III R.C.
BARNHISEL H.C.

Date 4-15-85

Weather clear

Temp. 60°



#3

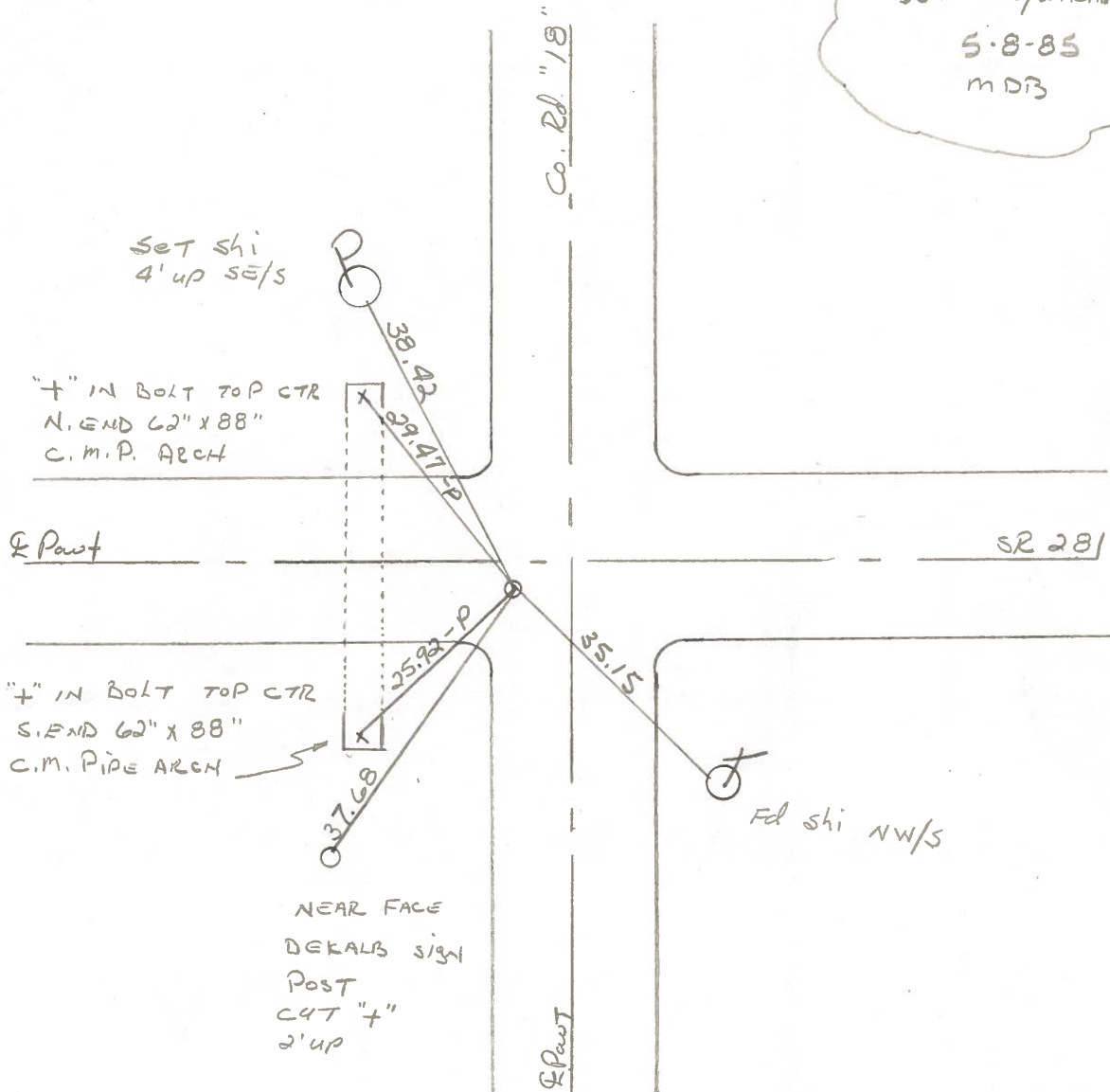
Fd P.K. @ surface

2.3' RT. of & part SR 281

8.5' West of & part Co. Rd. 18 South

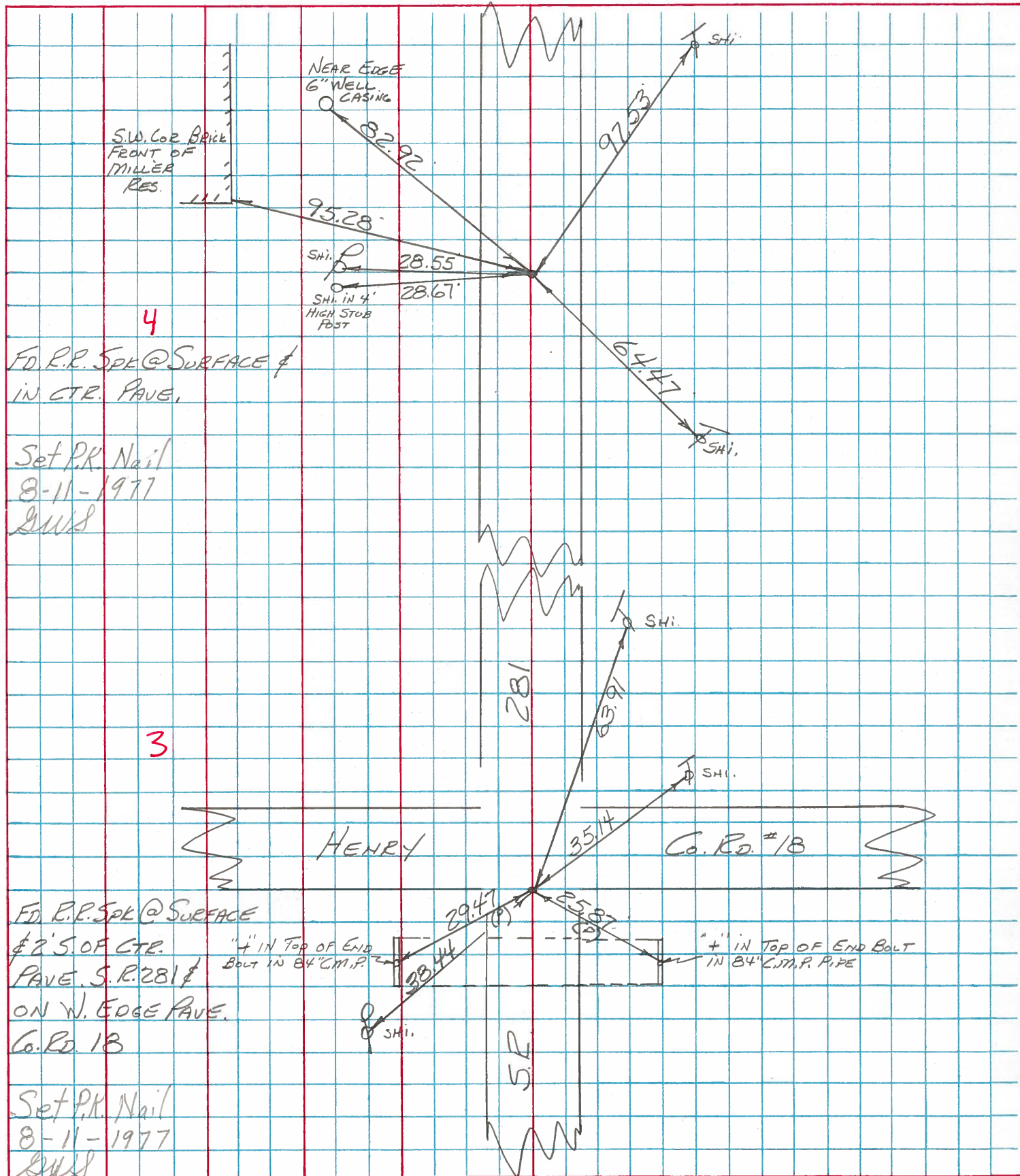
SLM = 47+04

Set PK/WASHER
5-8-85
MDB



PERSONNEL	TITLE	PERSONNEL	TITLE	COUNTY	DATE
BURNSIDE				HENRY	6-24-77
SMITH				S. R. 281	WEATHER CLOUDY
BOWERS				SEC.	TEMP. +74
MEAD					

DESCRIPTION	LEFT	CENTER LINE	RIGHT	JOB NO.
-------------	------	-------------	-------	---------



HENRY COUNTY ENGINEER'S OFFICE CORNER STONE RECOVERY PROGRAM

Sht. 3 of 13
S.R. 281

TOWNSHIP FLATROCK

OK 6-24-77 (STATE)
DATE 7-22-76

SECTION 29

WEATHER CLEAR & WARM

T4N, R6E

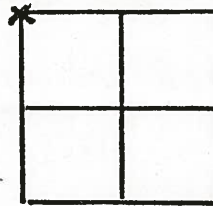
TEMP _____

PERSONNEL JG

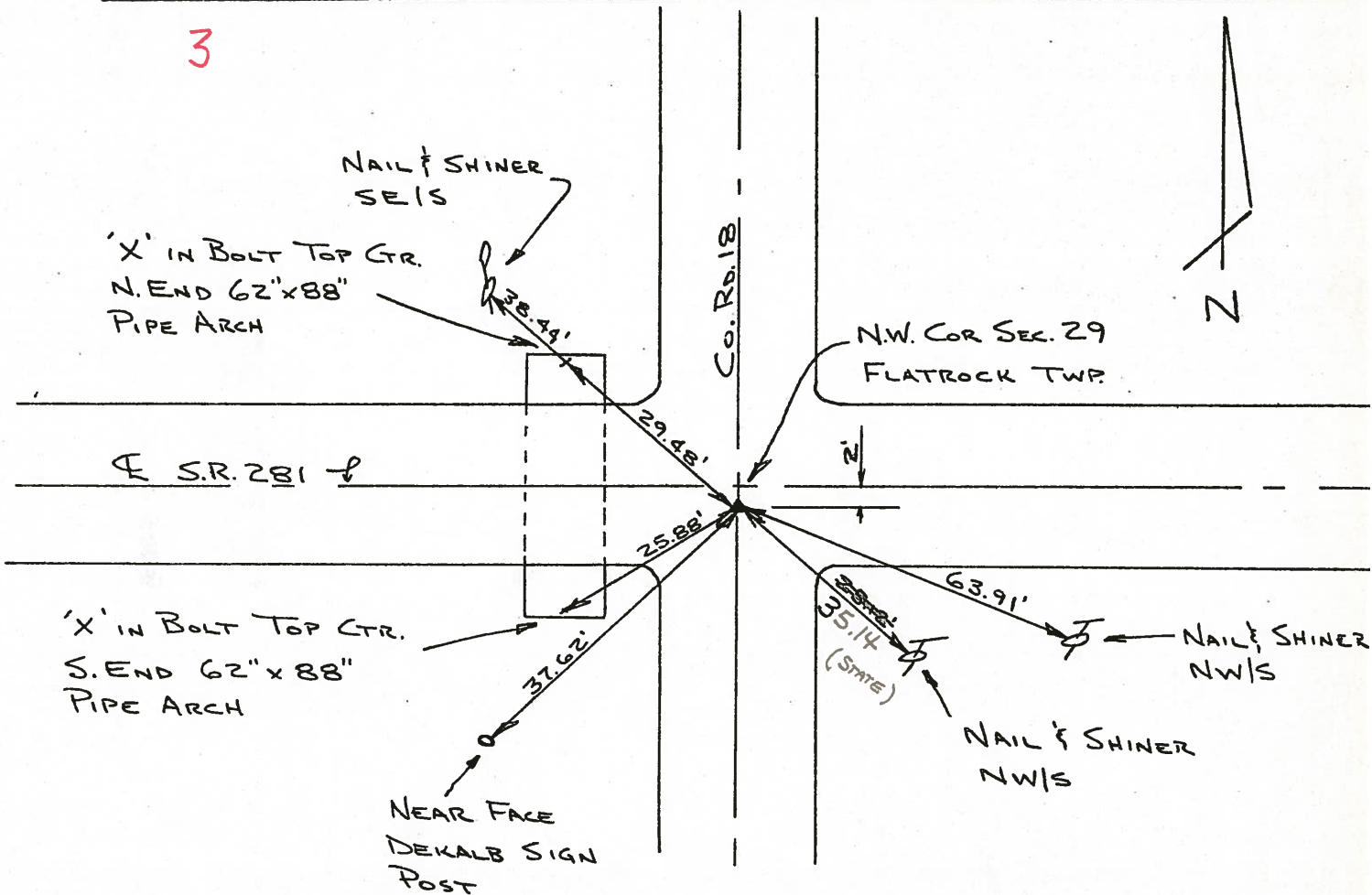
BB

SS

MS



3



FOUND R.R. SPK. OVER 8" LONG BOLT. BOLT WAS 10" DEEP. R.R. SPK & BOLT WERE 0.36' EAST OF PEAK OF STONE. PLACED CTR. PUNCHED R.R. SPK OVER STONE. STONE IS 2' SOUTH OF E.S.R. 281. STONE IS 16" DEEP P.K.'S 6'E. & 6'S.

P.K. NAIL SET
8-11-77

Copied:

Painted:

PERSONNEL TITLE PERSONNEL TITLE

COUNTY HENRY DATE Oct. 30, 19

Tomsic

S. R. 281 WEATHER

Newser

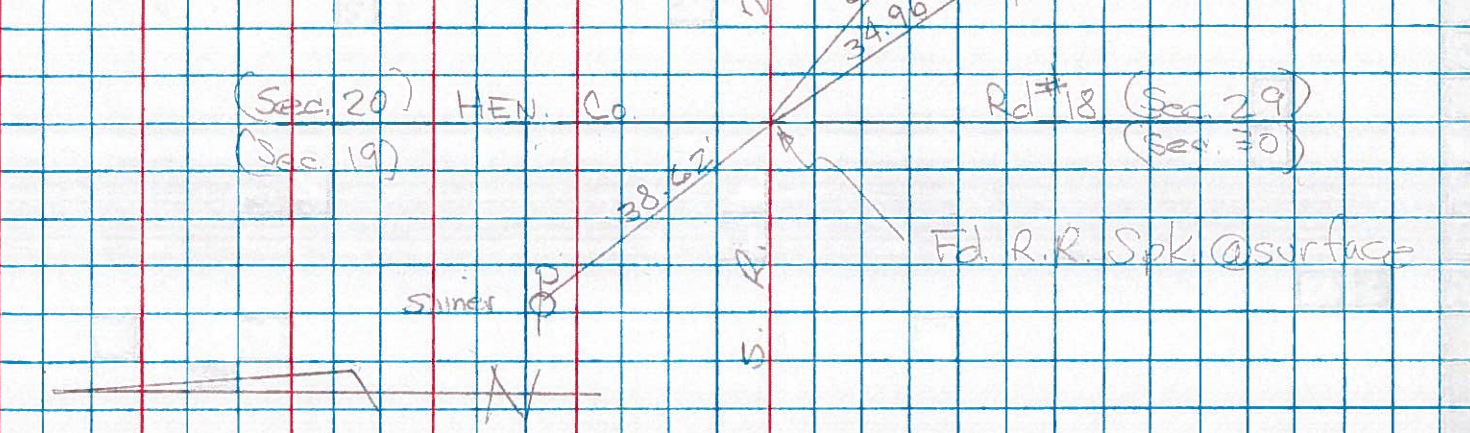
SEC. Flatrock TWP. TEMP.

Vanya

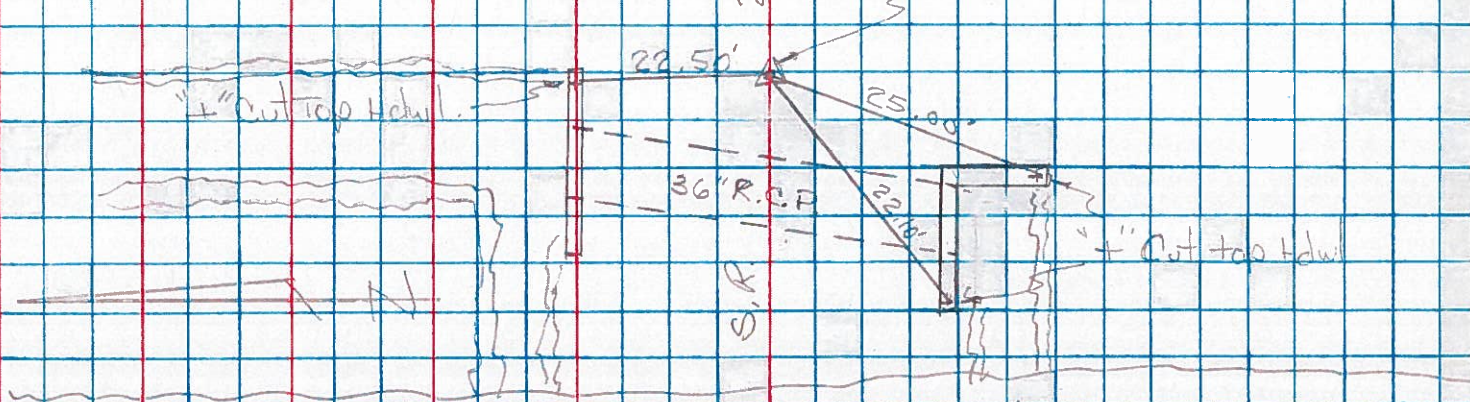
Granata

DESCRIPTION LEFT CENTER LINE RIGHT JOB NO.

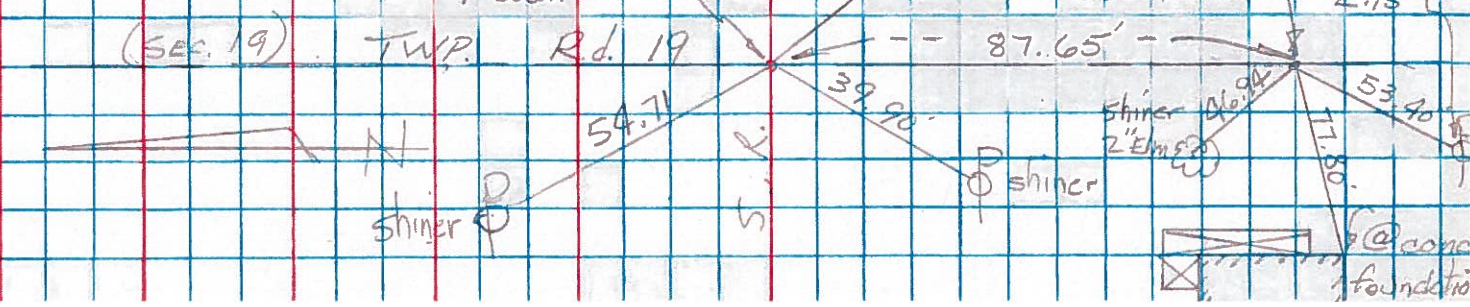
Sta. 47+06.97
Vgt. Co. Rd # 18
Sec. 19, 20, 29 & 30
TAN-ROE 3



Sta. 20+67.87 2
S. 1/4 Point Sec. 19



DEFIANCE - HENRY Co. LINE
Sta. 0+00
Sec. 19 & 30



PERSONNEL	TITLE	PERSONNEL	TITLE	COUNTY <u>Henry</u>	DATE <u>5-11-64</u>
<u>Burnside</u>				S. R. <u>#281</u>	WEATHER <u>Cloudy</u>
<u>Smith</u>				SEC. _____	TEMP. <u>75°</u>

DESCRIPTION	LEFT	CENTER LINE	RIGHT	JOB NO.
-------------	------	-------------	-------	---------

✓ #4 S.E. Cor. Sec. 19 Flatrock Twp. Co. Rd #18	(3)	Plumbed { 26.11' S.W. to "t" top of Bolt ctr. 84" c.m. P. xov. 29.59' N.W. to "t" top of Bolt ctr. 84" c.m. P. xov. 38.73' N.W. to Shi. P. Pole 63.63' E.S.E. to Shi. in T. Pole
-------------------------------------------------------	-----	----------------------------------------------------------------------------------------------------------------------------------------------------------------------------------------------

✓ #6 S.E. Cor. Sec. 20 Flatrock Twp. Co. Rd #17	(5)	36.95' N.W. to Shi. in P. Pole 32.76' S.S.E. to "t" in N. End E. Br. Rail 32.58' S.S.W. to "t" in N. End W. Br. Rail 32.35' S.E. to "t" on N.E. wing wall } Plumbed 32.18' S.W. to "t" on N.W. wing wall }
-------------------------------------------------------	-----	------------------------------------------------------------------------------------------------------------------------------------------------------------------------------------------------------------------------

✓ #7 S/4 Cor. Sec. 21	(6)	57.37' S. to Shi. in 10" stump 3' high 127.30' E.N.E. to Shi. in P. Pole 25.53' N. to "t" in top E. end Dr. Pipe 128.87' W.N.W. to Shi. in P. Pole
-----------------------	-----	-------------------------------------------------------------------------------------------------------------------------------------------------------------

PERSONNEL TITLE PERSONNEL TITLE

COUNTY Henry

DATE 11-29-57

S. R. # 281

WEATHER

SEC. "H"

TEMP

DESCRIPTION Henry-Defiance Co. line East

JOB NO.

LEFT

CENTER LINE

RIGHT

#1-2

Co. line N. & S. Stones.

#1 North stone Ref.
Found 11/29/57 Iron Bolt.

16.45' N.W. To Cross S.E. Cor. N. Br. R.
18.55' S.W. ✓ ✓ N.E. ✓ S. Br. R.
58.63' S.E. Nail & Shi. in P. Pole
87.65' S. To South stone.



#2 South stone Ref.
Iron Bolt
(Did not find)

53.40' S.W. To 60' spk. E. side P. Pole
77.80' S.W. To S.E. Cor. Conc. House Fd
73.69' N.W. To ⊗ on face of S.E. Cor
S. Br. Rail.



#3
1/4 stone
Found 11/29/57

22.50' N.N.E. To ⊗ on E. end N. Hdwy
25.00' S.S.W. To ⊗ on S. end S. Hdwy
22.10' S.W. To ⊗ on W. end S. Hdwy



#4 S.E. Cor. Sec. 19 Flatrock Twp.
Stone-iron Bolt
Co. Rd #18
5/11/64 Note: For New Ties
See Sheet #24

22.36' S.W. To ⊗ on SW. Wing wall
158.5' N.W. To ⊗ on N.E. Wing wall
45.00' S.W. To near side of 2" pipe in cor.
47.77' N.W. To near side of 2" pipe in cor.
37.66' N.W. To 60' spk. in S. Side P. Pole



#5 S. 1/4 stone Sec. 20 Flatrock Twp.
Sta. 73+82.1

36.60' N.E. To center iron pipe
36.95' S.E. To center iron pipe
42.70' S.W. To center iron pipe



O.K.
5/11/64

28.67' N. To Shi. P. Pole
64.44' S.W. To Shi. in T. Pole
92.52' E.S.E. To Shi. in T. Pole