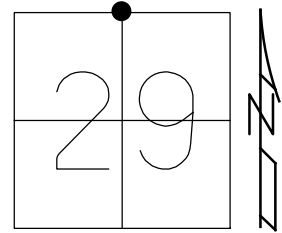


O.D.O.T. DISTRICT 2 SURVEY OFFICE (USE ONLY)

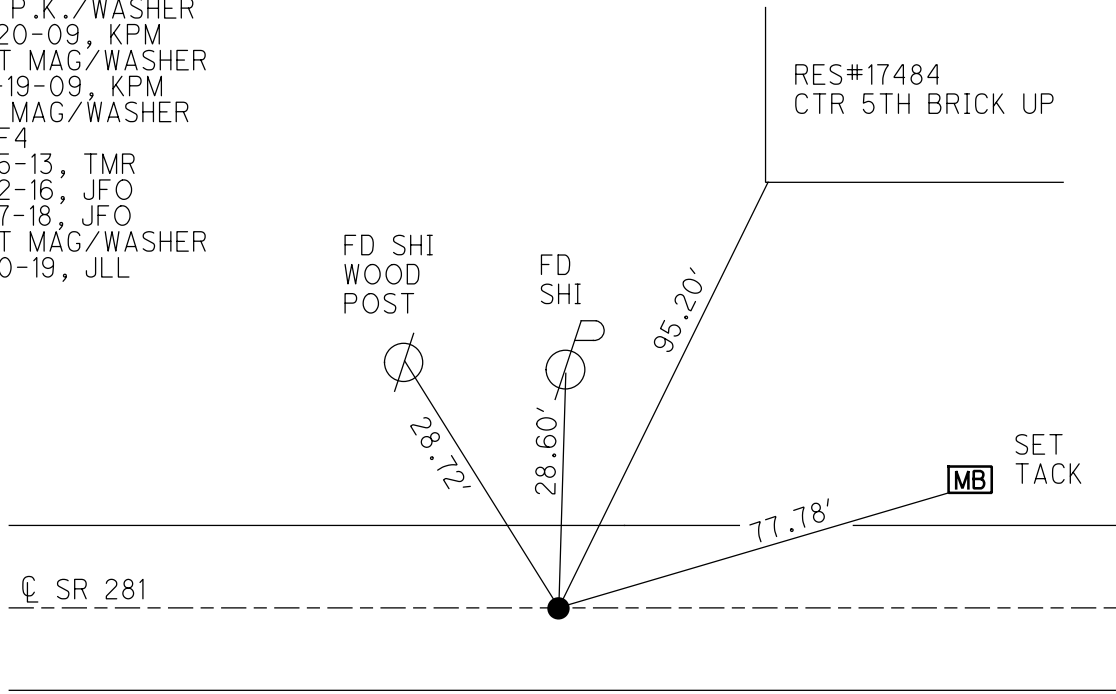
PERSONNEL _____ REFERENCE NO. 4 SHEET 5 OF 20
 NOTES JAMES DATE 1-10-19 ROUTE SR 281
 H.C. LEU WEATHER CLOUDY COUNTY HENRY
 R.C. MILLER TEMP. 24° TOWNSHIP FLAT ROCK
 DWG BY JAMES PID 102763 SECTION 29
 T 4 N R 6 E

TYPE MONUMENT MAG/WASHER
 ON SURFACE - ~~BELOW~~ ON
 OFFSET ☉ PAVEMENT ON LT : RT
9.8' TO LT EDGE PAVEMENT
 STATION: 73+88.25



HORZ.DATUM: NAD83 2011 GEOID: NAVD88 2012A
 GRID: NORTHING: 593134.559 EASTING: 1501150.850

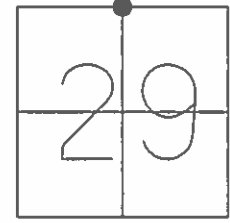
- RECORD:
 FD R.R.SPIKE
 1985
 SET P.K./WASHER
 8-28-95, KPM
 FD P.K./WASHER
 8-20-09, KPM
 SET MAG/WASHER
 10-19-09, KPM
 FD MAG/WASHER
 REF 4
 11-5-13, TMR
 11-2-16, JFO
 6-7-18, JFO
 SET MAG/WASHER
 1-10-19, JLL



O.D.O.T. DISTRICT 2 SURVEY OFFICE (USE ONLY)

PERSONNEL	REFERENCE NO. <u>4</u>	SHEET <u>3</u> OF <u>14</u>
NOTES <u> MOSER</u>	DATE <u> 8/20/09</u>	ROUTE <u> SR 281</u>
H.C. <u> GOLDBERG</u>	WEATHER <u> CLOUDY</u>	COUNTY <u> HENRY</u>
R.C. <u> MOSER</u>	TEMP. <u> 75°</u>	TOWNSHIP <u> FLAT ROCK</u>
		SECTION <u> 29</u>
		T <u>4</u> N R <u>6</u> E

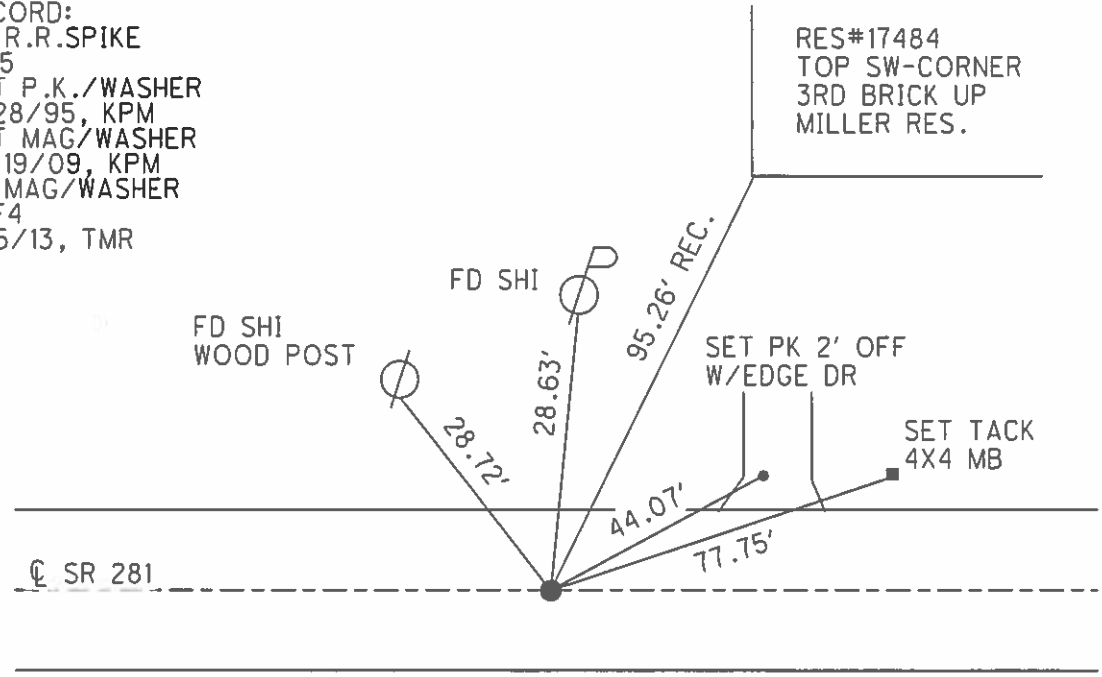
TYPE MONUMENT P.K./WASHER
 ON SURFACE - ~~BELOW~~ ON
~~LEFT = C~~ PAV'T = ~~RIGHT~~ ON
 9.8' TO LT EDGE PAVEMENT
 S.L.M. 73+82.76



GRID: NORTHING: 593134.458 EASTING: 1501150.860

RECORD:
 FD R.R.SPIKE
 1985
 SET P.K./WASHER
 8/28/95, KPM
 SET MAG/WASHER
 10/19/09, KPM
 FD MAG/WASHER
 REF4
 11/5/13, TMR

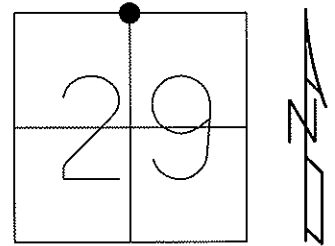
RES#17484
 TOP SW-CORNER
 3RD BRICK UP
 MILLER RES.



O.D.O.T. DISTRICT 2 SURVEY OFFICE (USE ONLY)

PERSONNEL	REFERENCE NO. <u>4</u>	SHEET <u>3</u> OF <u>14</u>
NOTES <u>MOSER</u>	DATE <u>8-20-09</u>	ROUTE <u>SR 281</u>
H.C. <u>GOLDBURG</u>	WEATHER <u>CLOUDY</u>	COUNTY <u>HENRY</u>
R.C. <u>MOSER</u>	TEMP. <u>+75°</u>	TOWNSHIP <u>FLAT ROCK</u>
		SECTION <u>29</u>
		T <u>4</u> N R <u>6</u> E

TYPE MONUMENT FD. PK/WASHER
 ON SURFACE - ~~BELOW~~ ON SURFACE
~~LEFT = C PAV'T = RIGHT~~ ON CL.
9.8' TO LT. EDGE PAVEMENT
 S.L.M. 73+84 (SV103)

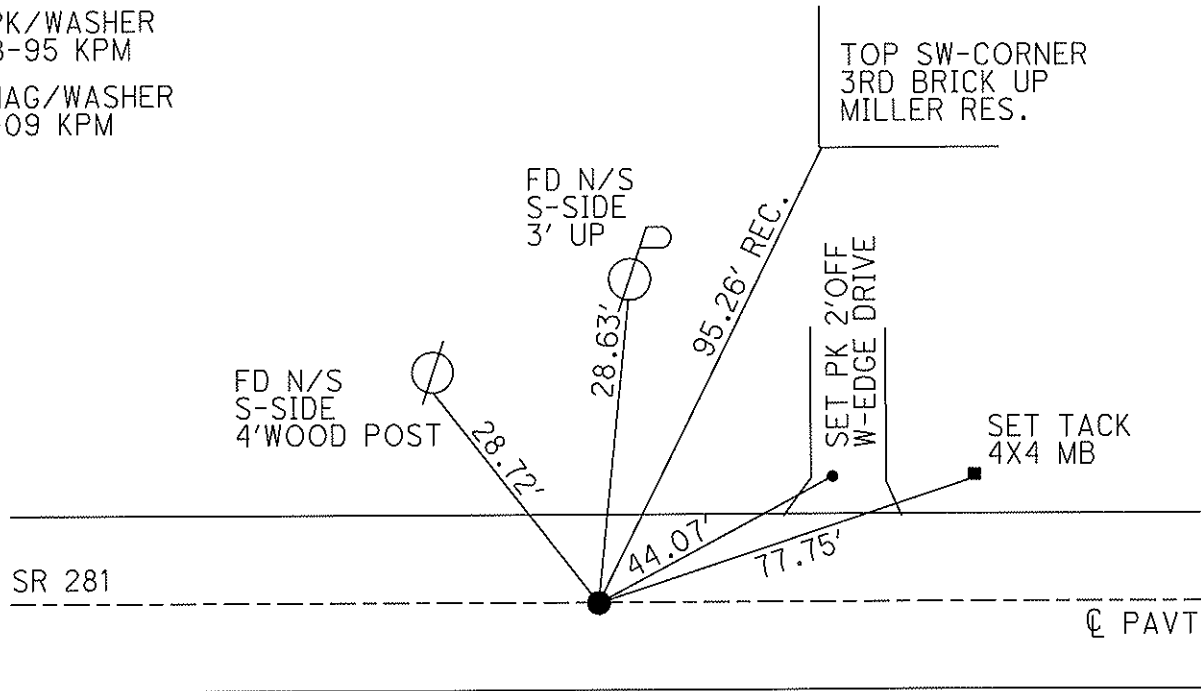


Grid: Northing: 593134.518 Easting: 1501150.822

RECORD: FD RR SPK
1985

SET PK/WASHER
08-28-95 KPM

SET MAG/WASHER
10-19-09 KPM



O.D.O.T. DISTRICT 2 SURVEY OFFICE

PERSONNEL _____

REFERENCE NO. 4

SHEET 4 OF 13

NOTES HUSS

H.C. VANDUSEN

DATE 6-8-95

ROUTE S.R. 281

R.C. MOSEY

WEATHER CLOUDY

COUNTY HENRY

TEMP. +62° F

TOWNSHIP FLAT ROCK

SECTION 29

T 4 N R 6 E

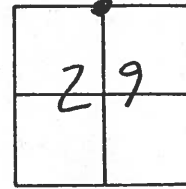
TYPE MONUMENT PK / WASHER

ON SURFACE - ~~BELOW~~ YES

~~LEFT - & PAV'T. - RIGHT~~ YES

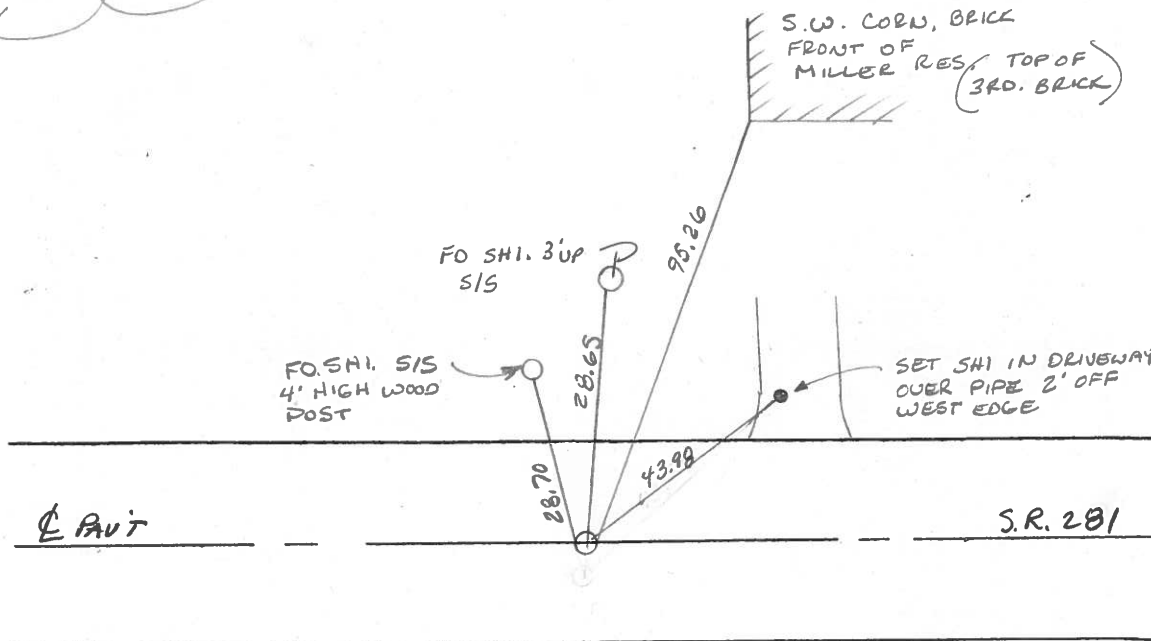
9.8 TO LT EDGE PAVEMENT

S.L.M. 73 + 84



RECORD (1985)
FD PK @ SURFACE
ON CL

SET PK/WASHER
8-28-95



County HENRY S.R. 281

Date 4-15-85

Township FLATROCK

Weather Clear

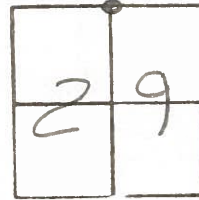
Section 29

Temp. 60°

T4N, R6E

Personnel Hoffman R.C.
BARNHISEL H.C.

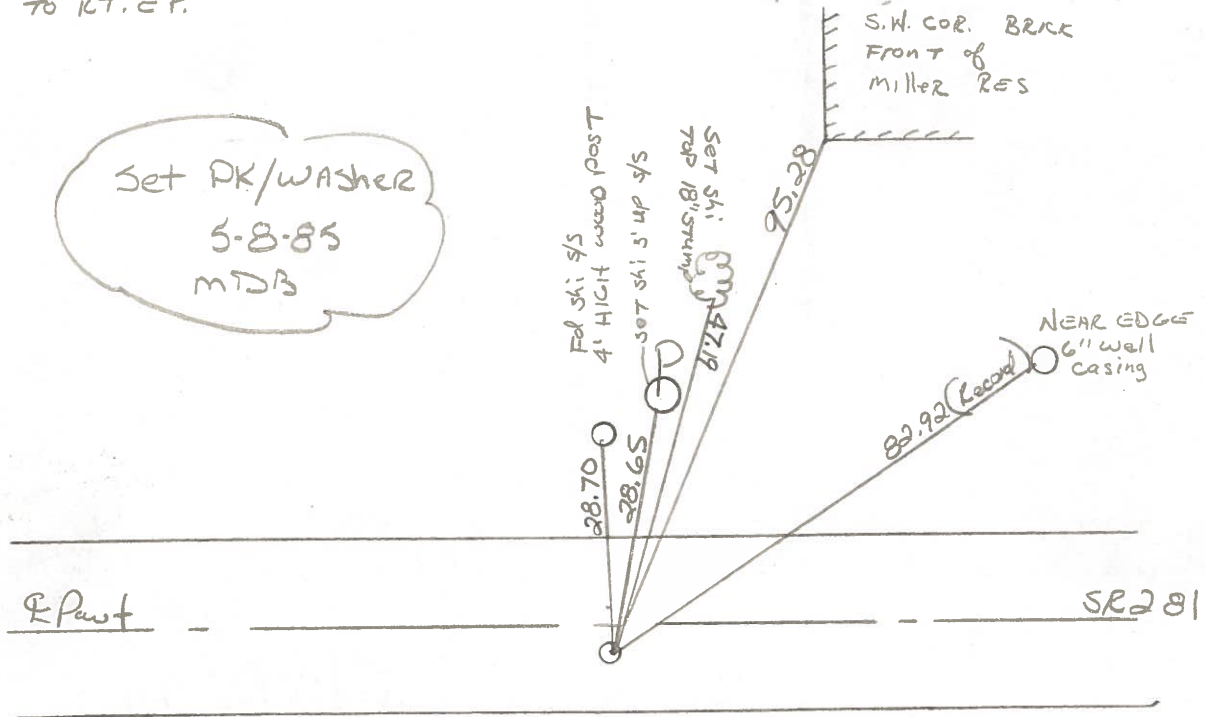
4



Fd P.K. @ surface
on & post
8.4' TO RT. C.P.

SLM 73+79

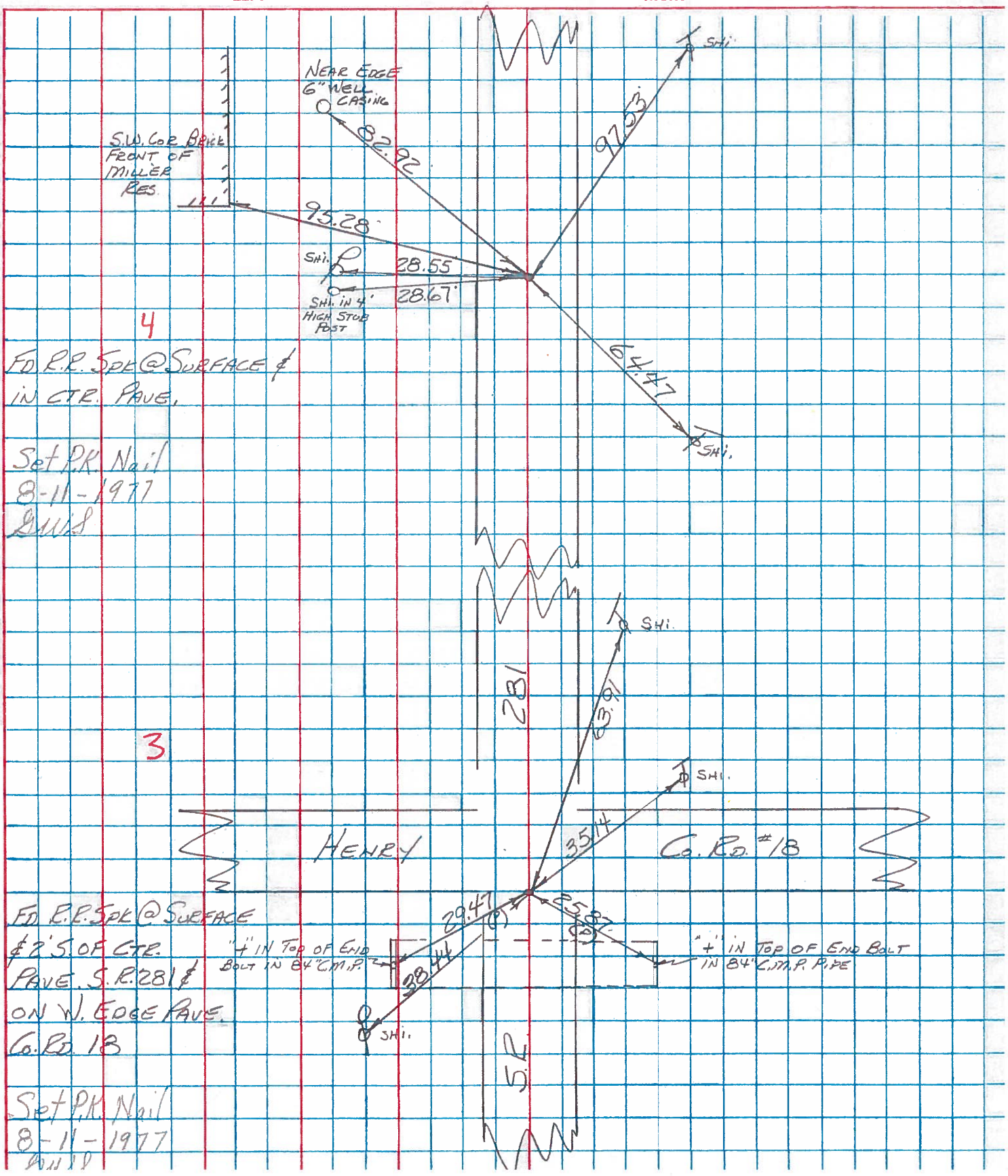
Set PK/WASHER
5-8-85
MTDB



PERSONNEL	TITLE	PERSONNEL	TITLE
BURUSIDE			
SMITH			
BOWERS			
ITKAP			

COUNTY HENRY DATE 6-24-77
 S. R. 281 WEATHER CLOUDY
 SEC. _____ TEMP. +74

DESCRIPTION _____ LEFT _____ CENTER LINE _____ RIGHT _____ JOB NO. _____



HENRY COUNTY ENGINEER'S OFFICE CORNER STONE RECOVERY PROGRAM

Sht. 4 of 13

SR. 281

OK 6-24-77 (STATE)

TOWNSHIP FLATROCK

DATE 7-22-76

SECTION 29

WEATHER CLEAR & WARM

T4N, R6E

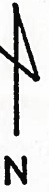
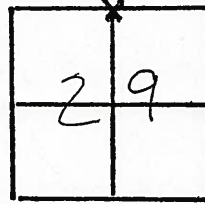
TEMP _____

PERSONNEL JG

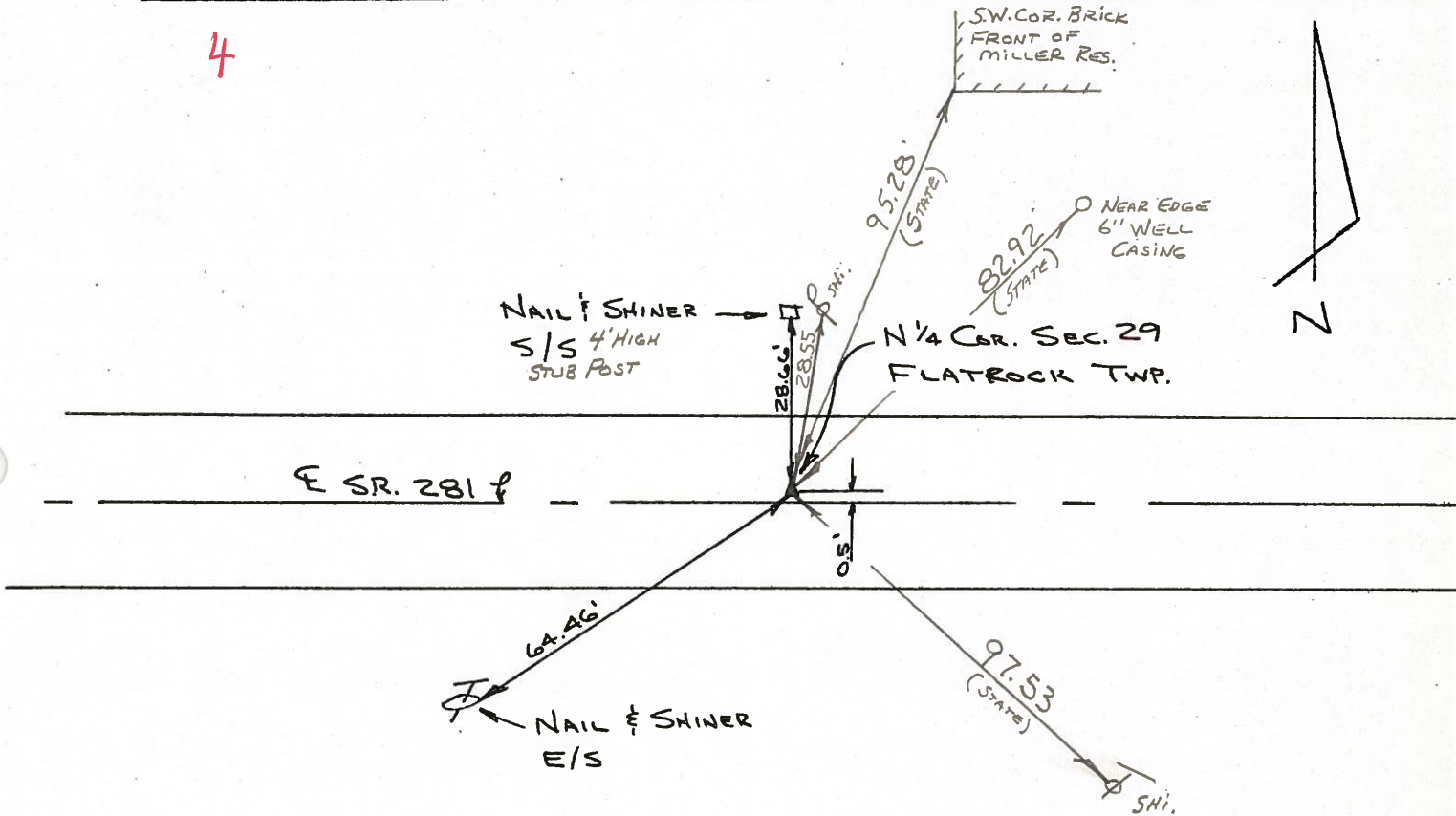
BB

SS

MS



4



FOUND R.R. SPK. OVER STONE. STONE IS 10" DEEP. PLACED CTR. PUNCHED R.R. SPK OVER STONE. STONE IS 0.50'± NORTH OF E SR. 281. P.K.'S 6' N. & 6' W.

P.K. SET 8-11-77

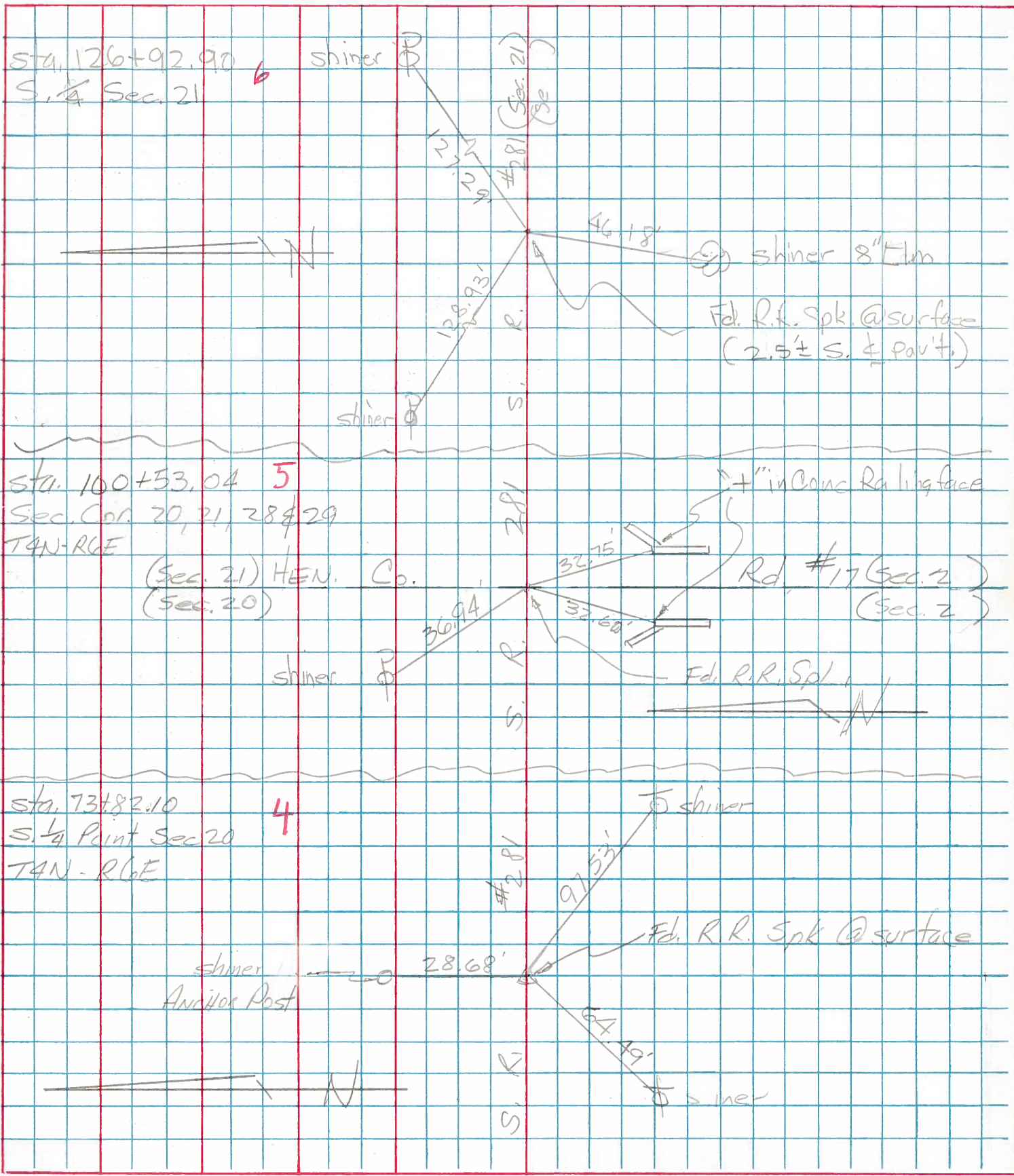
Copied:

Painted:

PERSONNEL	TITLE	PERSONNEL	TITLE
Tomsic			
Neuser			
Vanyo			
Grinata			

COUNTY HENRY DATE Oct 30, 1974
 S. R. 281 WEATHER _____
 SEC. Flatead P. TEMP. _____

DESCRIPTION _____ LEFT _____ CENTER LINE _____ RIGHT _____ JOB NO. _____



PERSONNEL TITLE PERSONNEL TITLE

COUNTY Henry DATE 11-29-57

S. R. #281 WEATHER

SEC. "H" TEMP.

DESCRIPTION Henry-Defiance Co. line East JOB NO.

	LEFT	CENTER LINE	RIGHT
#1-2	Co. line N. & S. Stones.		
#1	North stone Ref. Found 11/29/57 Iron Bolt.		16.45' N.W. To Cross S.E. Cor. N. Br. R. 18.55' S.W. ✓ ✓ N.E. ✓ S. Br. R. 58.63' S.E. Nail & Shi. in P. Pole 87.65' S. To South stone.
#2	South stone Ref. Iron Bolt. (Did not find)		53.40' S.W. To 60° spk. E. side P. Pole 77.80' S.W. To S.E. Cor. Conc. House E. 73.69' N.W. To ⊗ on face of S.E. Cor. S. Br. Rail.
#3	1/4 Stone Found 11/29/57		22.50' N.N.E. To ⊗ on E. end N. Hdwr. 25.00' S.S.W. To ⊗ on S. end S. Hdwr. 22.10' S.W. To ⊗ on W. end S. Hdwr.
#4	S.E. Cor. Sec. 19 Flatrock Twp. Stone - Iron Bolt Co. Rd #18 5/16/64 Note: For New Ties See sheet #2A		22.36' S.W. To ⊗ on SW. wing wall 15.85' N.W. To ⊗ on N.E. wing wall 45.00' S.W. To near side of 2" pipe in cor. 47.77' N.W. To near side of 2" pipe in cor. 37.66' N.W. To 60° spk. in S. side P. Pole
#5	S. 1/4 stone Sec. 20 Flatrock Twp. Sta. 73+82.1		36.60' N.E. To center iron pipe 36.95' S.E. To center iron pipe 42.70' S.W. To center iron pipe
	O.K. 5/11/64		28.67' N. To Shi. P. Pole 64.44' S.W. To Shi. in T. Pole 97.52' E.S.E. To Shi. in T. Pole