

O.D.O.T. DISTRICT 2 SURVEY OFFICE (USE ONLY)

PERSONNEL

REFERENCE NO. 7

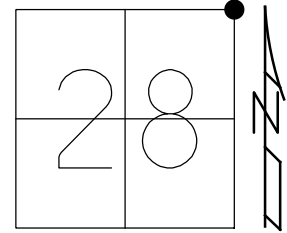
SHEET 11 OF 20

NOTES HAGEMEYER DATE 6/7/18  
 H.C. LEU WEATHER CLOUDY  
 R.C. HAGEMEYER TEMP. 69°

ROUTE SR 281  
 COUNTY HENRY  
 TOWNSHIP FLAT ROCK  
 SECTION 28  
 T 4 N R 6 E

DWG BY NIESE PID 102763

TYPE MONUMENT MAG/WASHER  
 ON SURFACE - ~~BELOW~~ ON  
 OFFSET ☉ PAVEMENT ON LT : RT  
9.4' TO RT EDGE PAVEMENT  
 STATION: 153+27.69

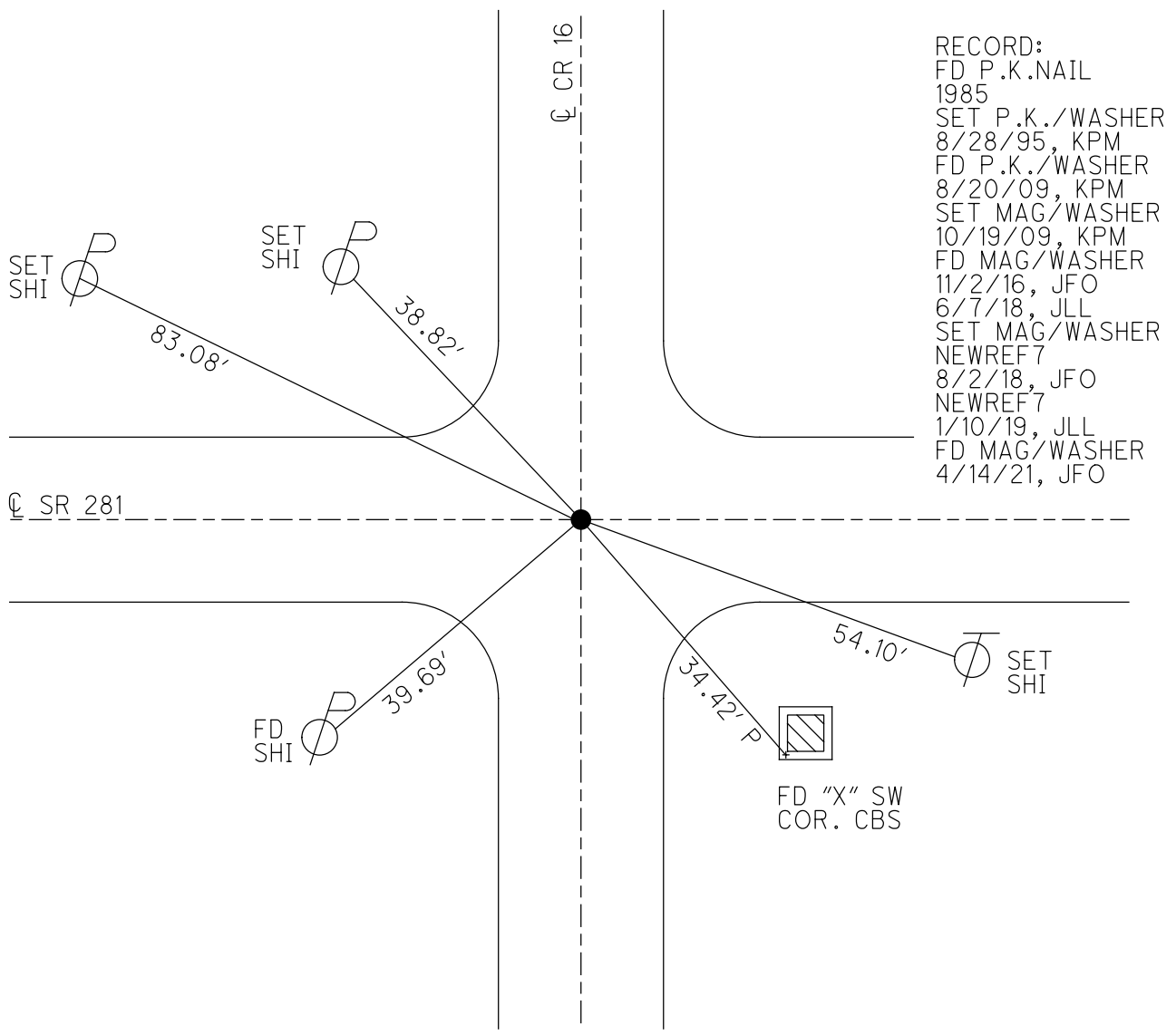


HORZ. DATUM: NAD83 2011

GEOID: NAVD88 2012A

GRID: NORTHING: 593041.706

EASTING: 1509088.706



RECORD:  
 FD P.K.NAIL  
 1985  
 SET P.K./WASHER  
 8/28/95, KPM  
 FD P.K./WASHER  
 8/20/09, KPM  
 SET MAG/WASHER  
 10/19/09, KPM  
 FD MAG/WASHER  
 11/2/16, JFO  
 6/7/18, JLL  
 SET MAG/WASHER  
 NEWREF7  
 8/2/18, JFO  
 NEWREF7  
 1/10/19, JLL  
 FD MAG/WASHER  
 4/14/21, JFO

O.D.O.T. DISTRICT 2 SURVEY OFFICE (USE ONLY)

PERSONNEL

REFERENCE NO. 7

SHEET 11 OF 20

NOTES HAGEMEYER

DATE 6-7-18

ROUTE SR 281

H.C. LEU

WEATHER CLOUDY

COUNTY HENRY

R.C. HAGEMEYER

TEMP. 69°

TOWNSHIP FLAT ROCK

SECTION 28

DWG BY JAMES

PID 102763

T 4 N R 6 E

TYPE MONUMENT MAG/WASHER

ON SURFACE - ~~BELOW~~ ON

OFFSET  $\varnothing$  PAVEMENT ON LT : RT

9.4' TO RT EDGE PAVEMENT

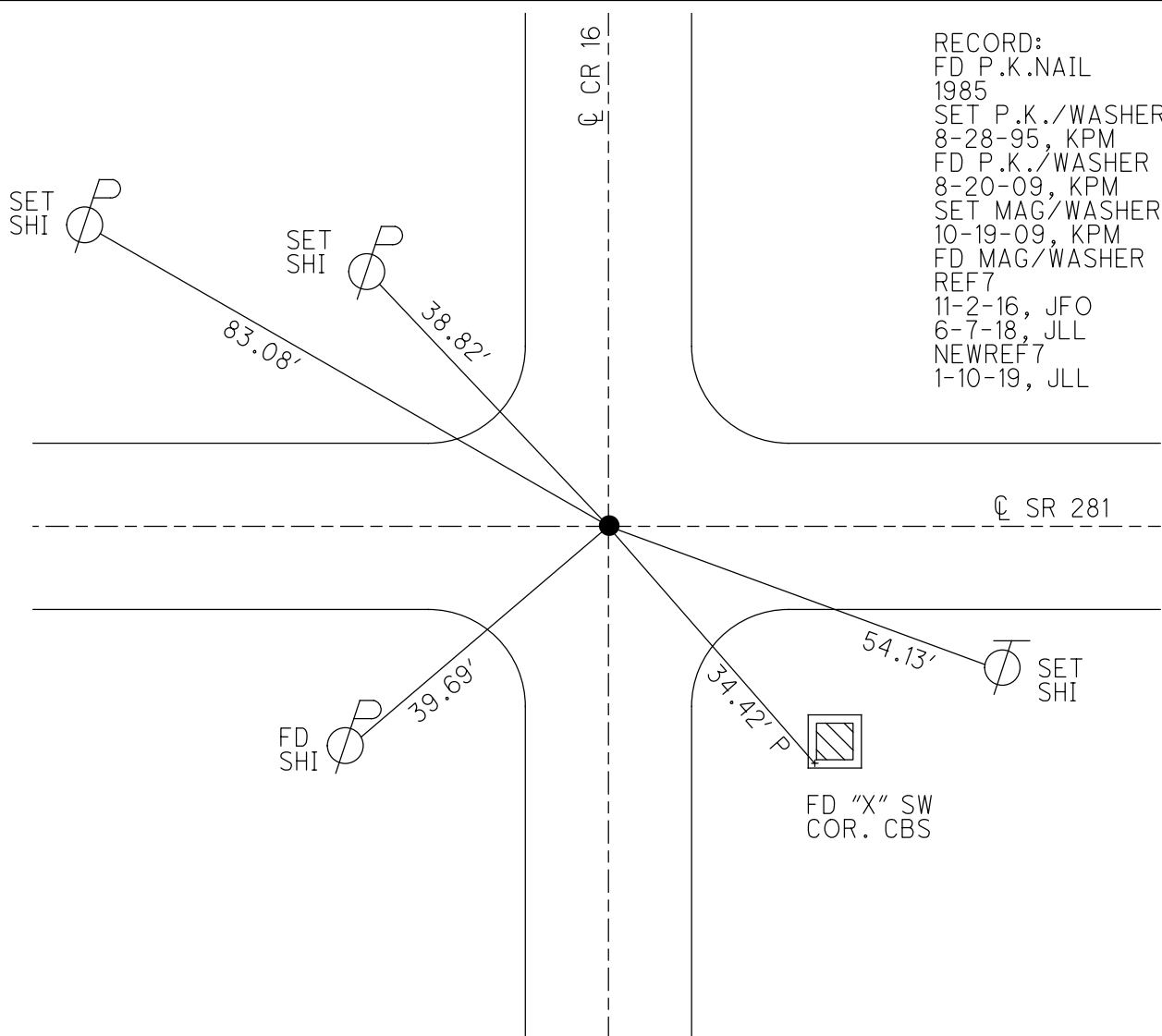
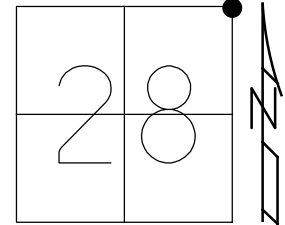
STATION: 153+27.69

HORZ.DATUM: NAD83 2011

GEOID: NAVD88 2012A

GRID: NORTHING: 593041.706

EASTING: 1509088.706

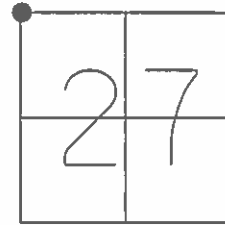


RECORD:  
 FD P.K.NAIL  
 1985  
 SET P.K./WASHER  
 8-28-95, KPM  
 FD P.K./WASHER  
 8-20-09, KPM  
 SET MAG/WASHER  
 10-19-09, KPM  
 FD MAG/WASHER  
 REF7  
 11-2-16, JFO  
 6-7-18, JLL  
 NEWREF7  
 1-10-19, JLL

O.D.O.T. DISTRICT 2 SURVEY OFFICE (USE ONLY)

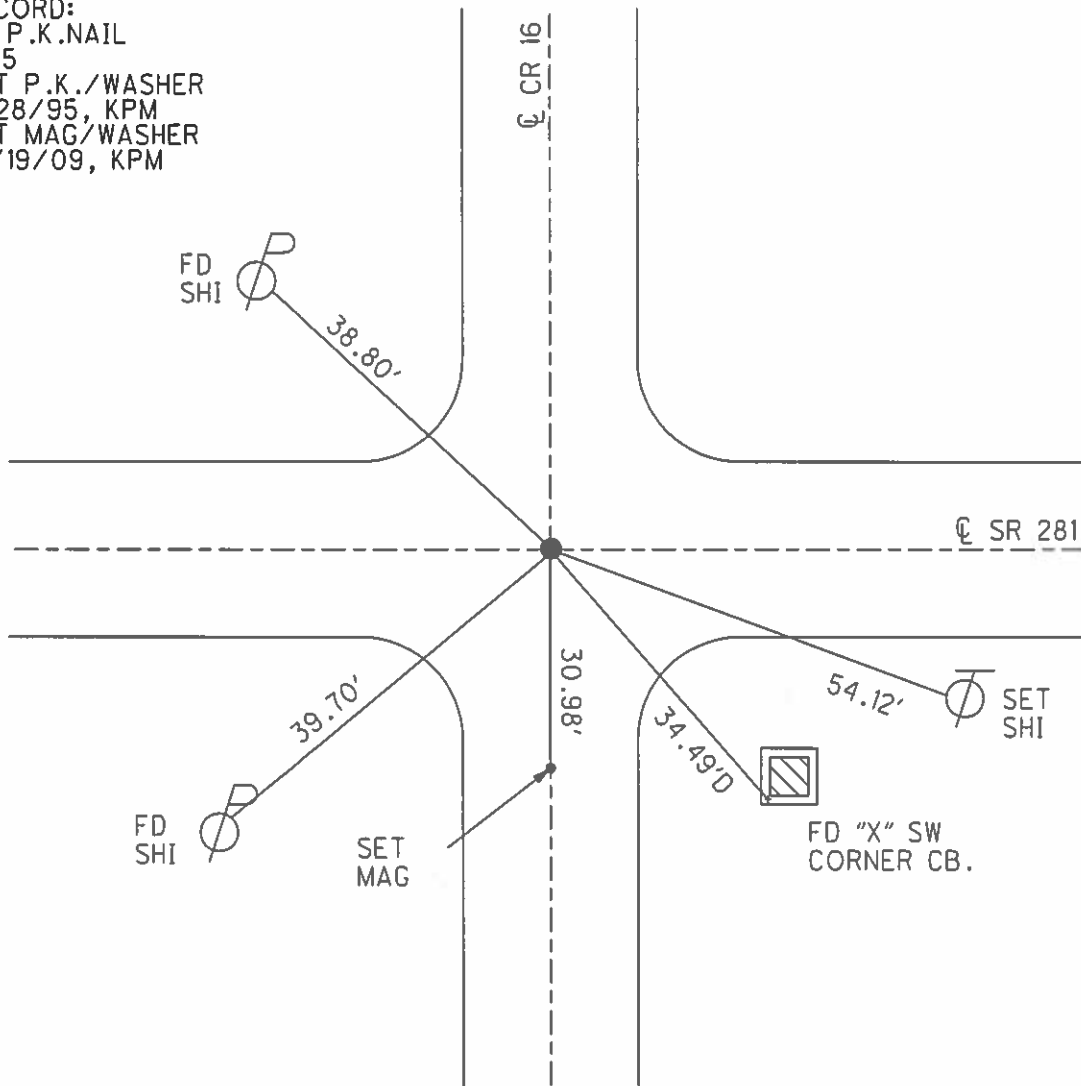
PERSONNEL \_\_\_\_\_ REFERENCE NO. 7 SHEET 9 OF 14  
 NOTES MOSER \_\_\_\_\_ DATE 8/20/09 ROUTE SR 281  
 H.C. GOLDBERG WEATHER CLOUDY COUNTY HENRY  
 R.C. MOSER TEMP. 80° TOWNSHIP FLAT ROCK  
 \_\_\_\_\_ SECTION 27  
 \_\_\_\_\_ T 4 N R 6 E

TYPE MONUMENT P.K./WASHER  
 ON SURFACE - ~~BELOW~~ ON \_\_\_\_\_  
~~LEFT~~ -  $\phi$  PAV'T - RIGHT 0.5'  
9.4' TO RT EDGE PAVEMENT  
 S.L.M. 153+24



GRID: NORTHING: 593041.685 EASTING: 1509088.604

RECORD:  
 FD P.K.NAIL  
 1985  
 SET P.K./WASHER  
 8/28/95, KPM  
 SET MAG/WASHER  
 10/19/09, KPM



O.D.O.T. DISTRICT 2 SURVEY OFFICE

PERSONNEL

REFERENCE NO. 7

SHEET 8 OF 13

NOTES HUSS

H.C. VAW DUSEN

DATE 6-12-95

ROUTE S.R. 281

R.C. MOSEK

WEATHER CLOUDY

COUNTY HENRY

TEMP. +62°F

TOWNSHIP FLATROCK

SECTION 27

T 4 N R 6 E

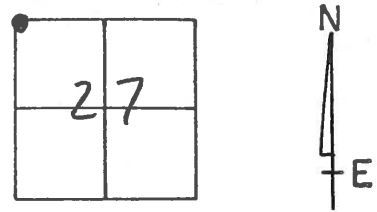
TYPE MONUMENT PK WASHER

ON SURFACE - ~~BELOW~~ YES

~~LEFT - C PAV'T.~~ - RIGHT 0.5' RT

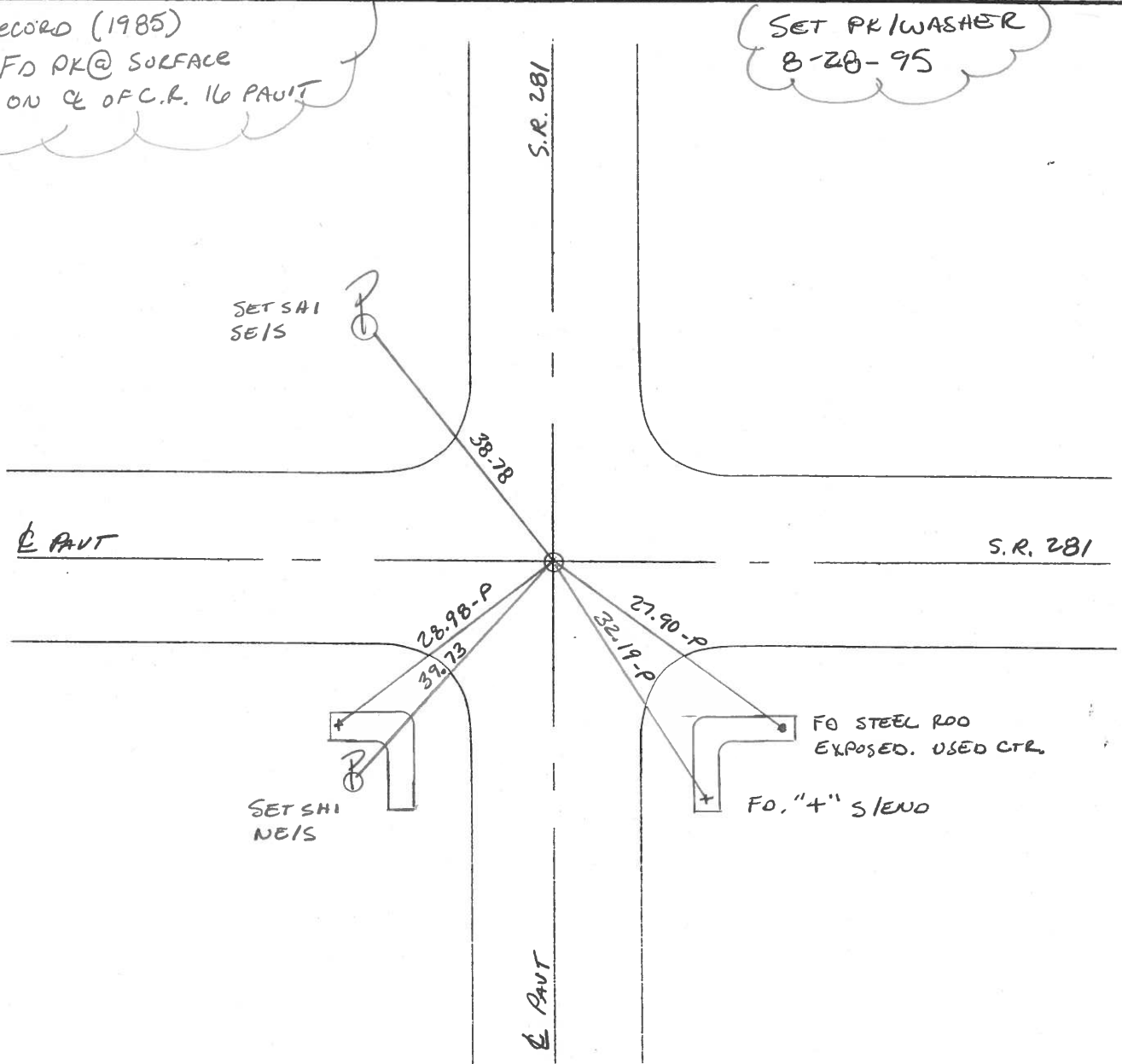
9.5 TO RT EDGE PAVEMENT

S.L.M. 153+22



RECORD (1985)  
FD PK @ SURFACE  
ON CL OF C.R. 110 PAVT

SET PK/WASHER  
8-28-95



County HENRY S.R. 281

Township FLATROCK

Section 27

T4N, R6E

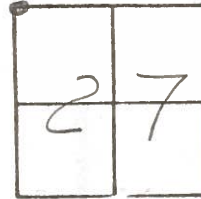
Personnel Hoffman R.C.  
BARNHISEL H.C.

# 7

Date 4-15-85

Weather clear

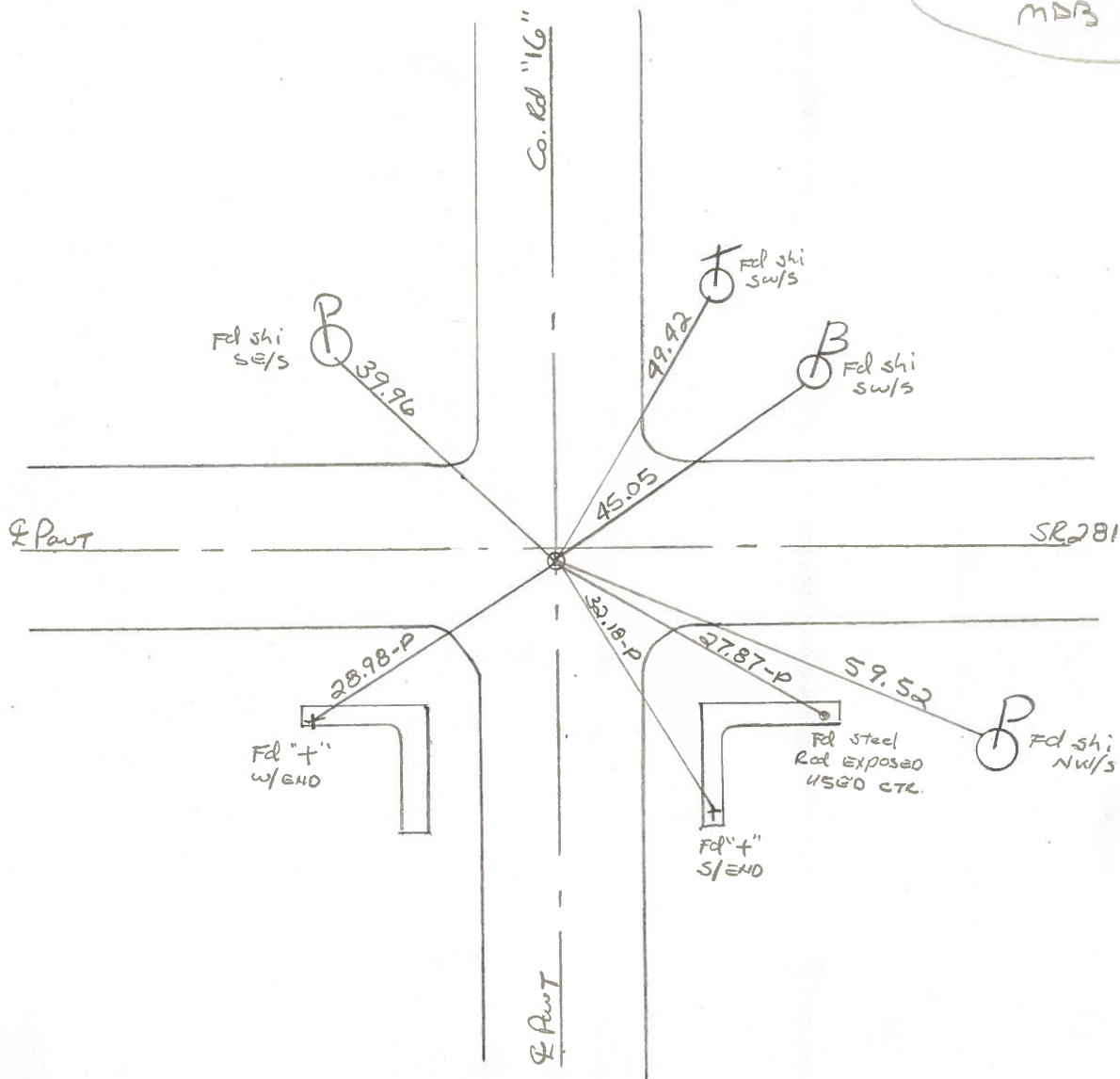
Temp. 70°



Fd P.K. @ surface  
0.5' RT. of & Pavt SR281  
ON & Co. Rd 16 Pavt.

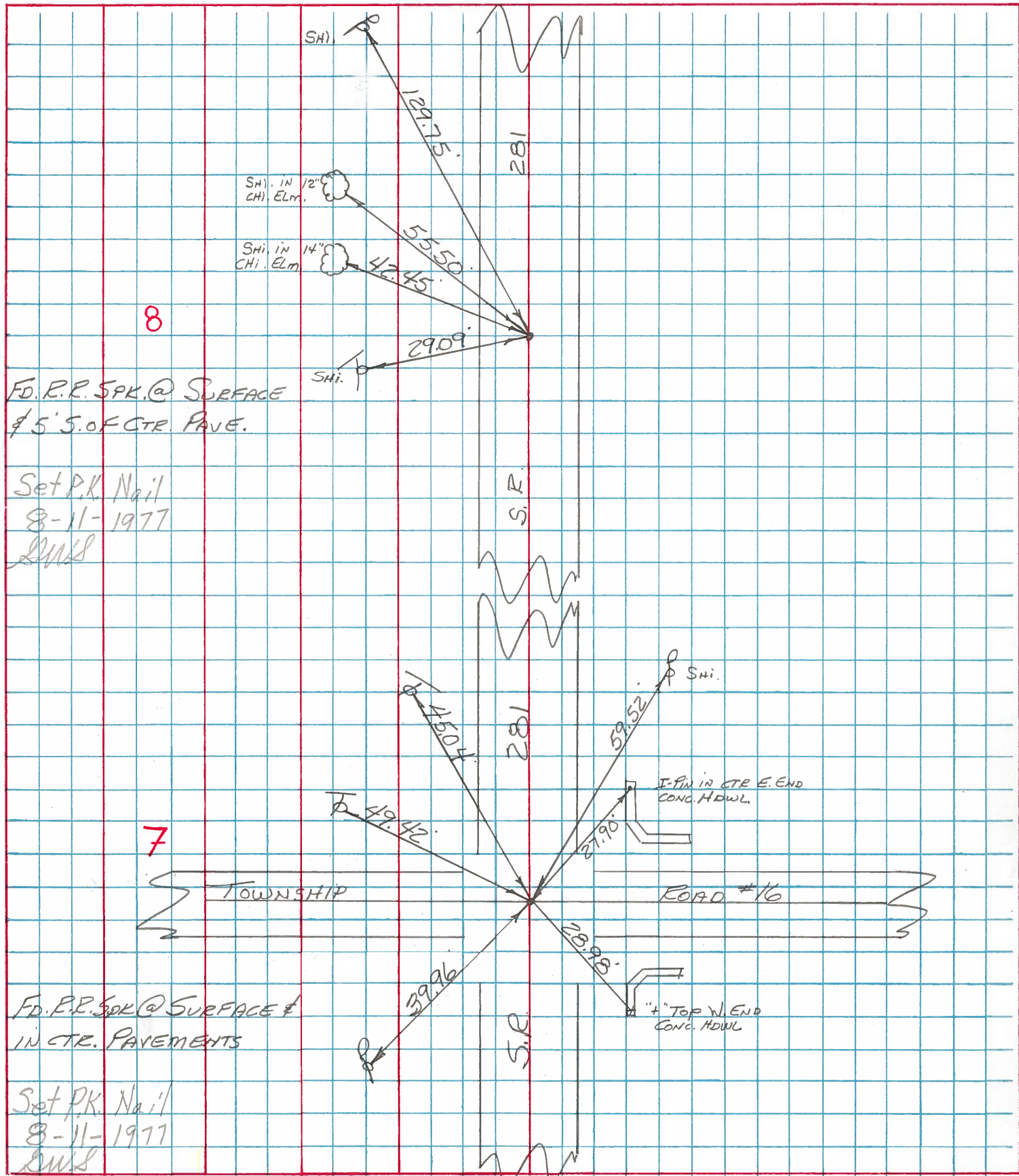
SLM 153+19

Set PK/WASHER  
5-8-85  
MDB



PERSONNEL	TITLE	PERSONNEL	TITLE	COUNTY	DATE
BURNSIDE				HENRY	6-23-77
SMITH				S. R.	281
BOWERS				WEATHER	CLOUDY
MEAD				SEC.	TEMP. +74°

DESCRIPTION \_\_\_\_\_ LEFT \_\_\_\_\_ CENTER LINE \_\_\_\_\_ RIGHT \_\_\_\_\_ JOB NO. \_\_\_\_\_



# HENRY COUNTY ENGINEER'S OFFICE CORNER STONE RECOVERY PROGRAM

Sht. 7 of 13  
S.R. 281

TOWNSHIP FLATROCK

DATE OK-6-23-77 (STATE)  
7-23-76

SECTION 27

WEATHER CLEAR & WARM

T4N, R6E

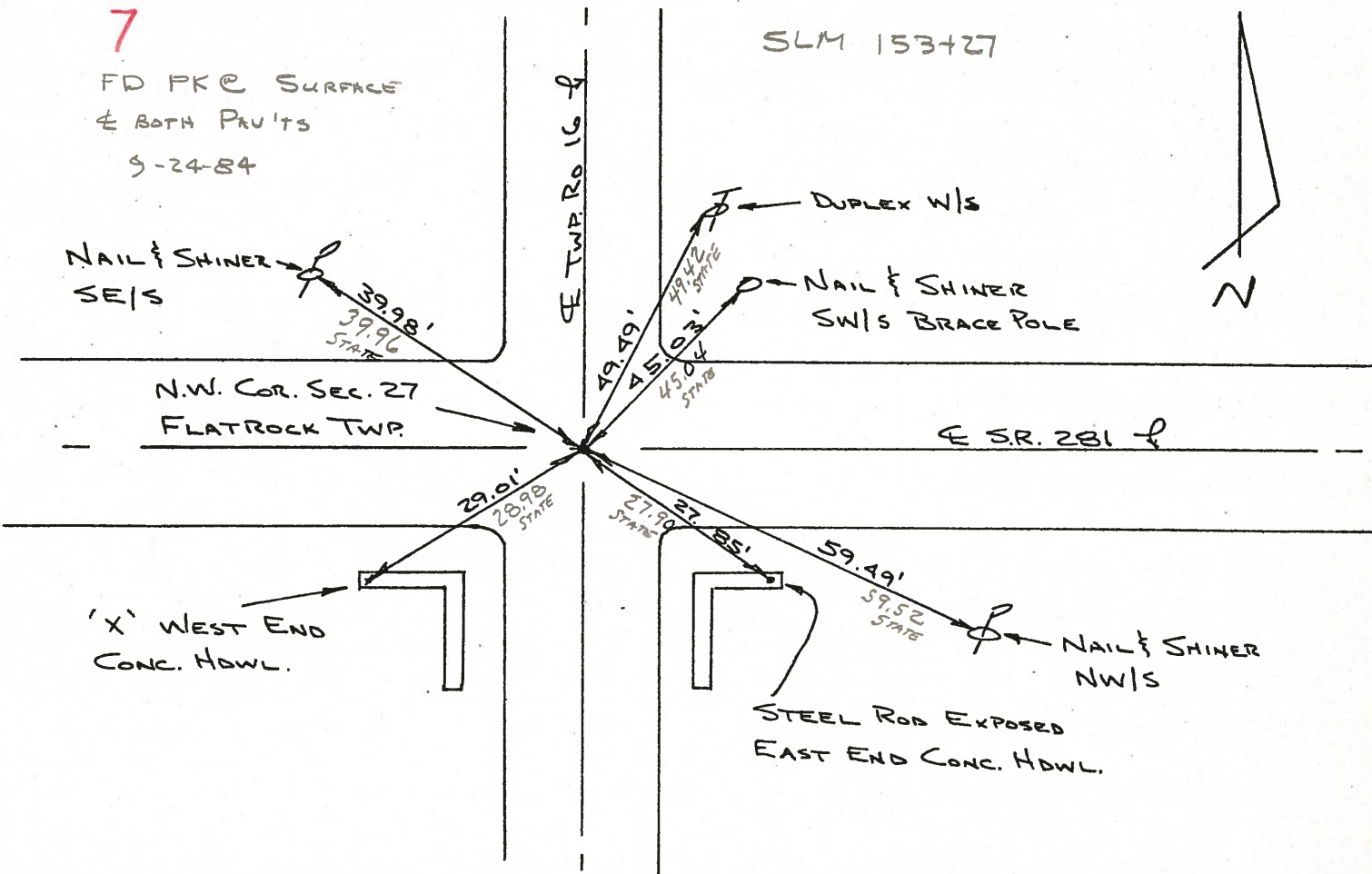
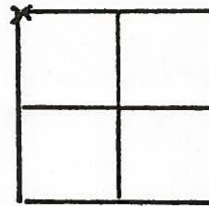
TEMP \_\_\_\_\_

PERSONNEL JG

BB

SS

MS



FOUND R.R. SPK. OVER STONE. STONE WAS 10" DEEP.  
REPLACED CTR. PUNCHED R.R. SPK. OVER STONE.  
STONE IS ON E S.R. 281. P.K.'S G'N. & G'W.

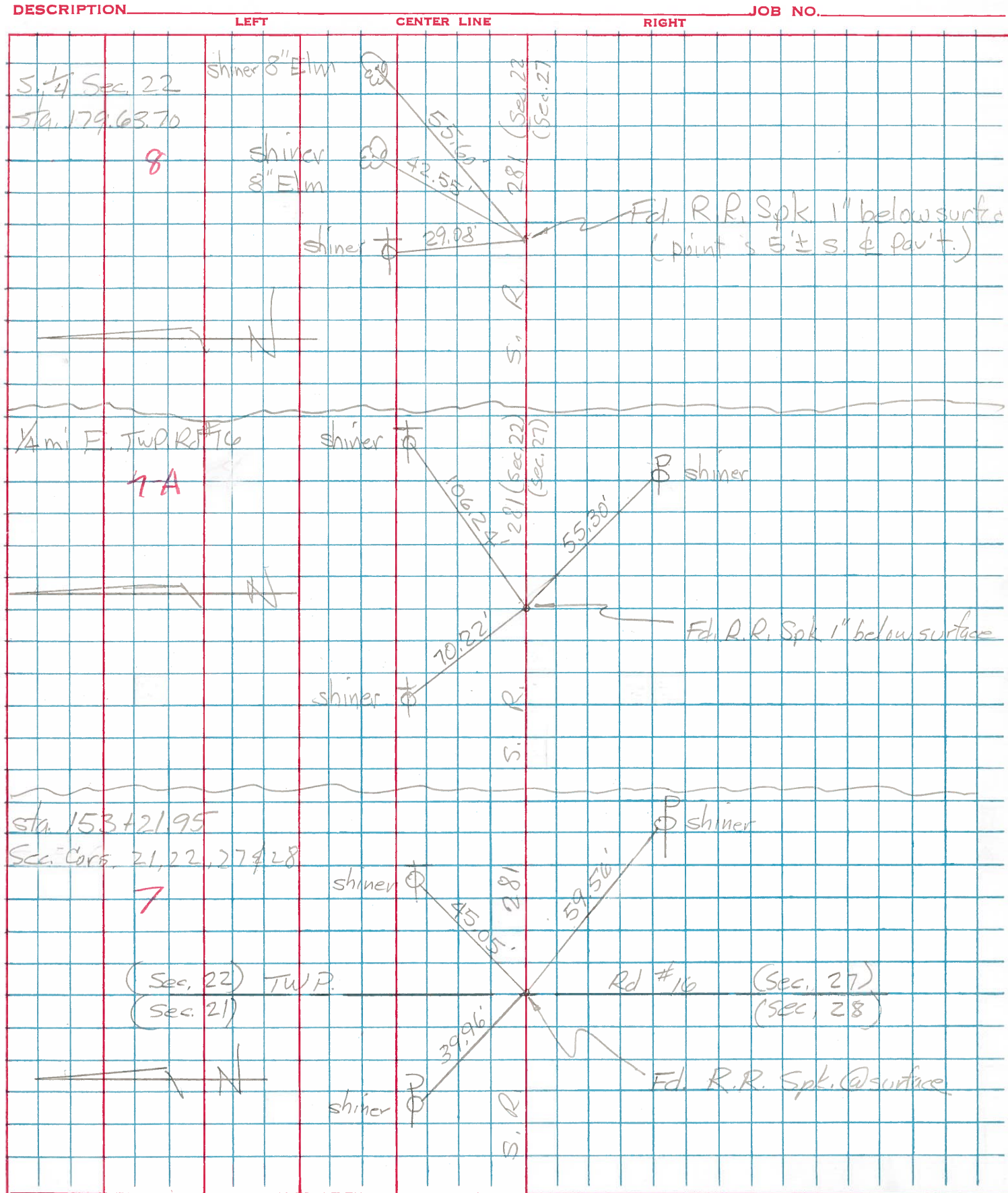
SET P.K. Nail  
8-11-77

Copied:  
Painted:

PERSONNEL	TITLE	PERSONNEL	TITLE	COUNTY	DATE
Tomsic					
Neiser					
Vanyo					
Granata					

S. R. \_\_\_\_\_ WEATHER \_\_\_\_\_

SEC. F1 TWP. \_\_\_\_\_ TEMP. \_\_\_\_\_





PERSONNEL TITLE PERSONNEL TITLE

COUNTY Henry

DATE 11-29-57

S. R. # 781

WEATHER

SEC. "H"

TEMP.

DESCRIPTION

LEFT

CENTER LINE

RIGHT

JOB NO.

#6	S.E. COR. Sec. 20 Sta. 100+51.58 Stake in Tile Co. Rd. #17	Flatrock Twp. 5/11/64 (5)	36.65' N.W. To spk. in P. Pole 61.10' N.E. To spk. in 16" Hickory 32.40' S.E. To ⊗ on N.E. Wing 32.10' S.W. To ⊗ on N.W. Wing.
#7	1/4 COR. Sec. 21 Sta. 126+92.90	5/11/64 (6)	29.96' S. To spk. in W. side Cor. Post 33.56' S.E. To Sign Post on fence line 44.90' S.W. To Iron Pin 25.50' N.W. To Hole ctr. Top of Drive Pipe E. side C.M.P. 31.18' N.E. To iron sign Post.
#8	S.E. COR. Sec. 21 Sta. 153+21.95 stone 4" under Surface Twp. Rd. #16	5/11/64 (7)	38.30' N.W. To ctr. 1" Iron Pipe 27.87' S.E. To Reinforcing rod in Wingwall 28.97' S.W. To ⊗ in Wingwall 57.57' S.E. To shi. in P. Pole 39.95' S.E. To shi. in P. Pole 48.42' N.W. To shi. in P. Pole 48.42' N.E. To shi. in T. Pole
#9	1/4 stone Sec. 22 Sta. 179+63.70' 4' N. of S. edge pavt 5/11/64	(8)	73.56' <sup>44'</sup> N.E. ⊗ W. end Cor. Metal Dr Pipe 29.18' N.N.W. To shi. in T. Pole 26.45' S. To spk. in Cor. Post 33.89' S.E. To iron sign Post
#10	S.E. COR. Sec. 22 Sta. 206+07.52 Stone No Pin Twp. Rd. #15 5/11/64	(9)	59.78' N.E. To spk. in P. Pole 63.80' N.W. To Shiner in T. Pole 18.92' S.E. To face broken off Rail Pipe 23.74' S.E.S. To Near side Rail P. 15.85' S.W. To Near side Rail P. 24.57' S.S.W. To "t" in S. end W. Hdwr

PERSONNEL TITLE PERSONNEL TITLE  
 Tomsic \_\_\_\_\_  
 Neuger \_\_\_\_\_  
 Vanyo \_\_\_\_\_  
 Granata \_\_\_\_\_

COUNTY HENRY DATE Nov. 7, 1974  
 S. R. 281 WEATHER \_\_\_\_\_  
 SEC. Flatrock Twp. TEMP. \_\_\_\_\_

DESCRIPTION LEFT CENTER LINE RIGHT JOB NO.

