

O.D.O.T. DISTRICT 2 SURVEY OFFICE (USE ONLY)

PERSONNEL

REFERENCE NO. 9

SHEET 13 OF 20

NOTES HAGEMEYER

DATE 6-7-18

ROUTE SR 281

H.C. LEU

WEATHER CLOUDY

COUNTY HENRY

R.C. HAGEMEYER

TEMP. 68°

TOWNSHIP FLAT ROCK

SECTION 27

DWG BY JAMES PID 102763

T 4 N R 6 E

TYPE MONUMENT MAG/WASHER

ON SURFACE - ~~BELOW~~ ON

OFFSET CL PAVEMENT 5.0', 3.2' LT CR 15 ~~LT~~ : RT

5.3' TO RT EDGE PAVEMENT

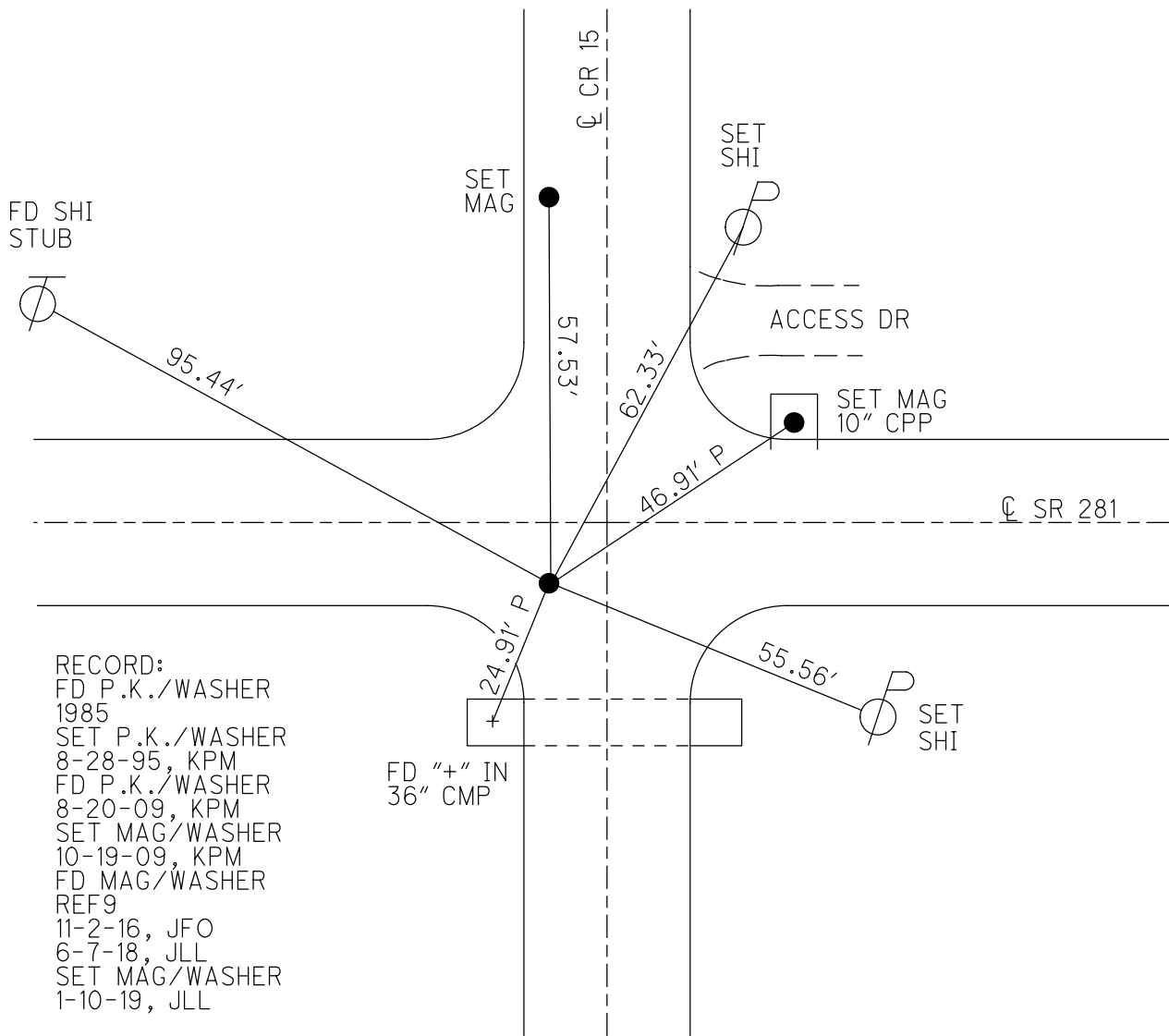
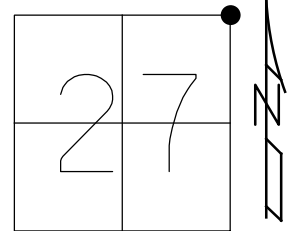
STATION: 206+13.89

HORZ. DATUM: NAD83 2011

GEOID: NAVD88 2012A

GRID: NORTHING: 592983.316

EASTING: 1514374.569

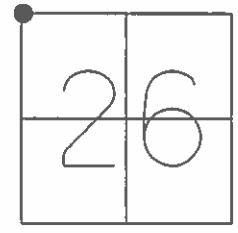


- RECORD:  
 FD P.K./WASHER  
 1985  
 SET P.K./WASHER  
 8-28-95, KPM  
 FD P.K./WASHER  
 8-20-09, KPM  
 SET MAG/WASHER  
 10-19-09, KPM  
 FD MAG/WASHER  
 REF9  
 11-2-16, JFO  
 6-7-18, JLL  
 SET MAG/WASHER  
 1-10-19, JLL

O.D.O.T. DISTRICT 2 SURVEY OFFICE (USE ONLY)

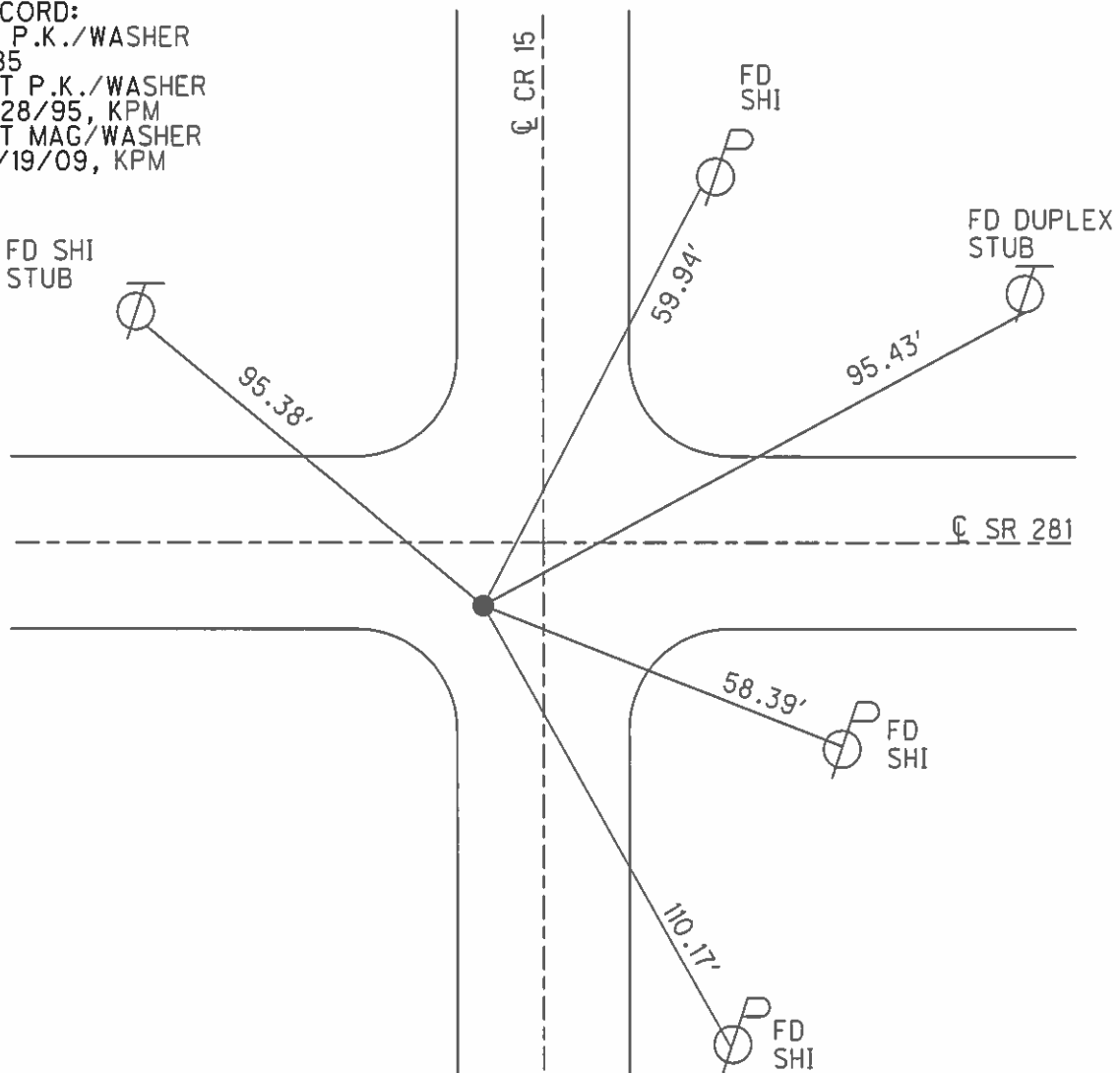
PERSONNEL \_\_\_\_\_ REFERENCE NO. 9 SHEET 11 OF 14  
 NOTES MOSER \_\_\_\_\_ DATE 8/20/09 ROUTE SR 281  
 H.C. GOLDBERG \_\_\_\_\_ WEATHER CLOUDY COUNTY HENRY  
 R.C. MOSER \_\_\_\_\_ TEMP. 80° TOWNSHIP FLAT ROCK  
 \_\_\_\_\_ SECTION 26  
 \_\_\_\_\_ T 4 N R 6 E

TYPE MONUMENT P.K./WASHER  
 ON SURFACE - ~~BELOW~~ ON  
~~LEFT~~ - ℄ PAV'T - RIGHT 5.2', 3.2' W/CR 15  
5.3' TO RT EDGE PAVEMENT  
 S.L.M. 206+10



GRID: NORTHING: 592983.306 EASTING: 1514374.482

RECORD:  
 FD P.K./WASHER  
 1985  
 SET P.K./WASHER  
 8/28/95, KPM  
 SET MAG/WASHER  
 10/19/09, KPM



O.D.O.T. DISTRICT 2 SURVEY OFFICE

PERSONNEL

REFERENCE NO. 9 SHEET 10 OF 13

NOTES HUSS

H.C. VAN DUSEN

R.C. ROUSOS

DATE 6-13-95

WEATHER SONNY

TEMP. +70°F

ROUTE S.R. 281

COUNTY HENRY

TOWNSHIP FLATROCK

SECTION 26

T 4 N R 6 E

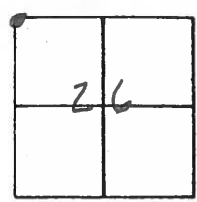
TYPE MONUMENT PK/WASHER

ON SURFACE - ~~BELOW~~ YES

~~LEFT - C PAV'T.~~ - RIGHT 5.2 ~ 3.2' W. C PAV'T

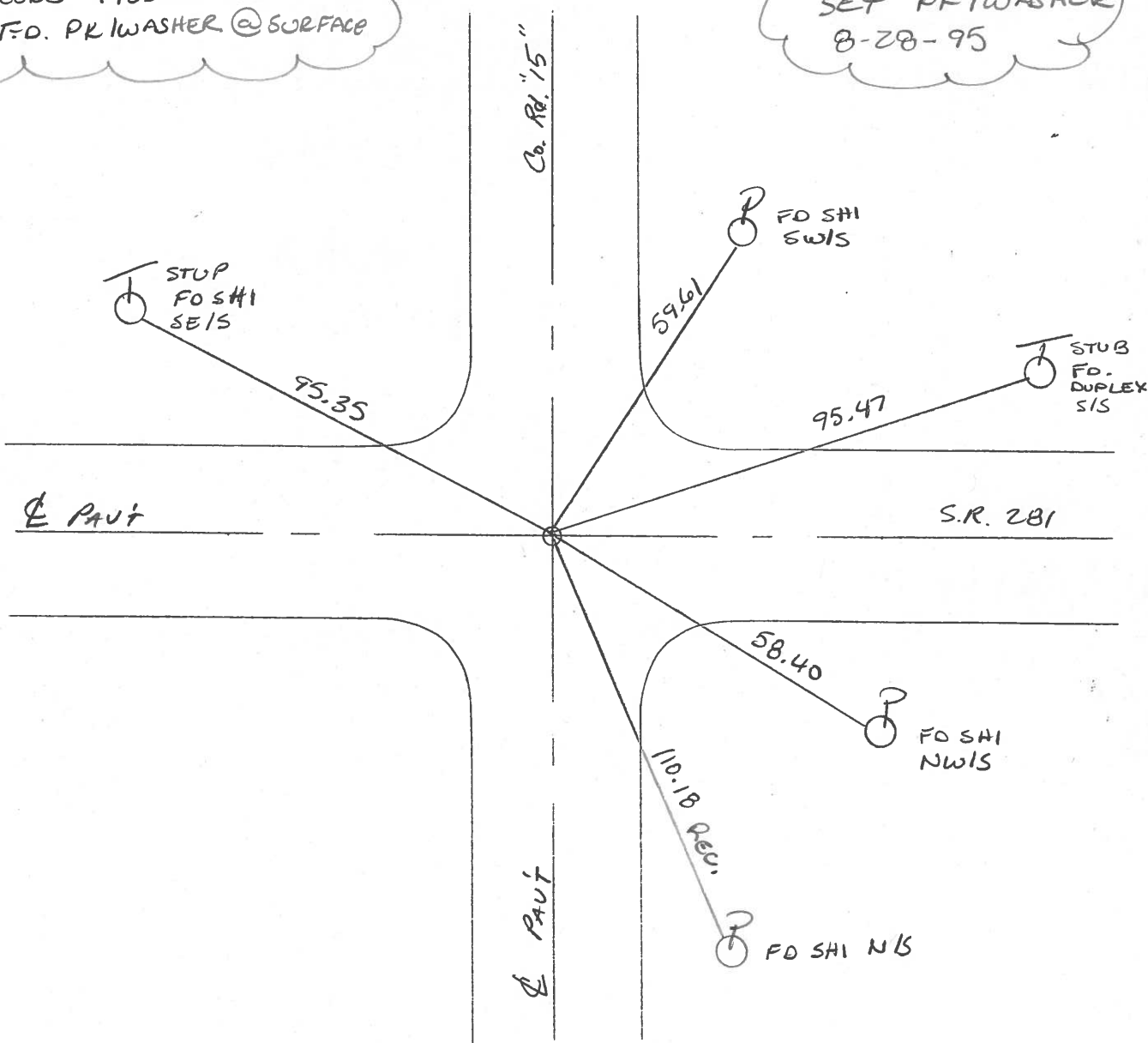
5.3 TO RT EDGE PAVEMENT

S.L.M. 206 + 15



RECORD 1985  
F.D. PK/WASHER @ SURFACE

SET PK/WASHER  
8-28-95



County HENRY S.R. 281

Township FLATROCK

Section 26

T4N, R6E

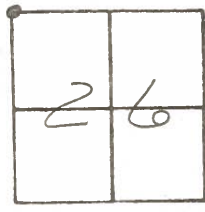
Personnel HOFFMAN R.C.  
BARNHISEL H.C.

#9

Date 4-15-85

Weather Clear

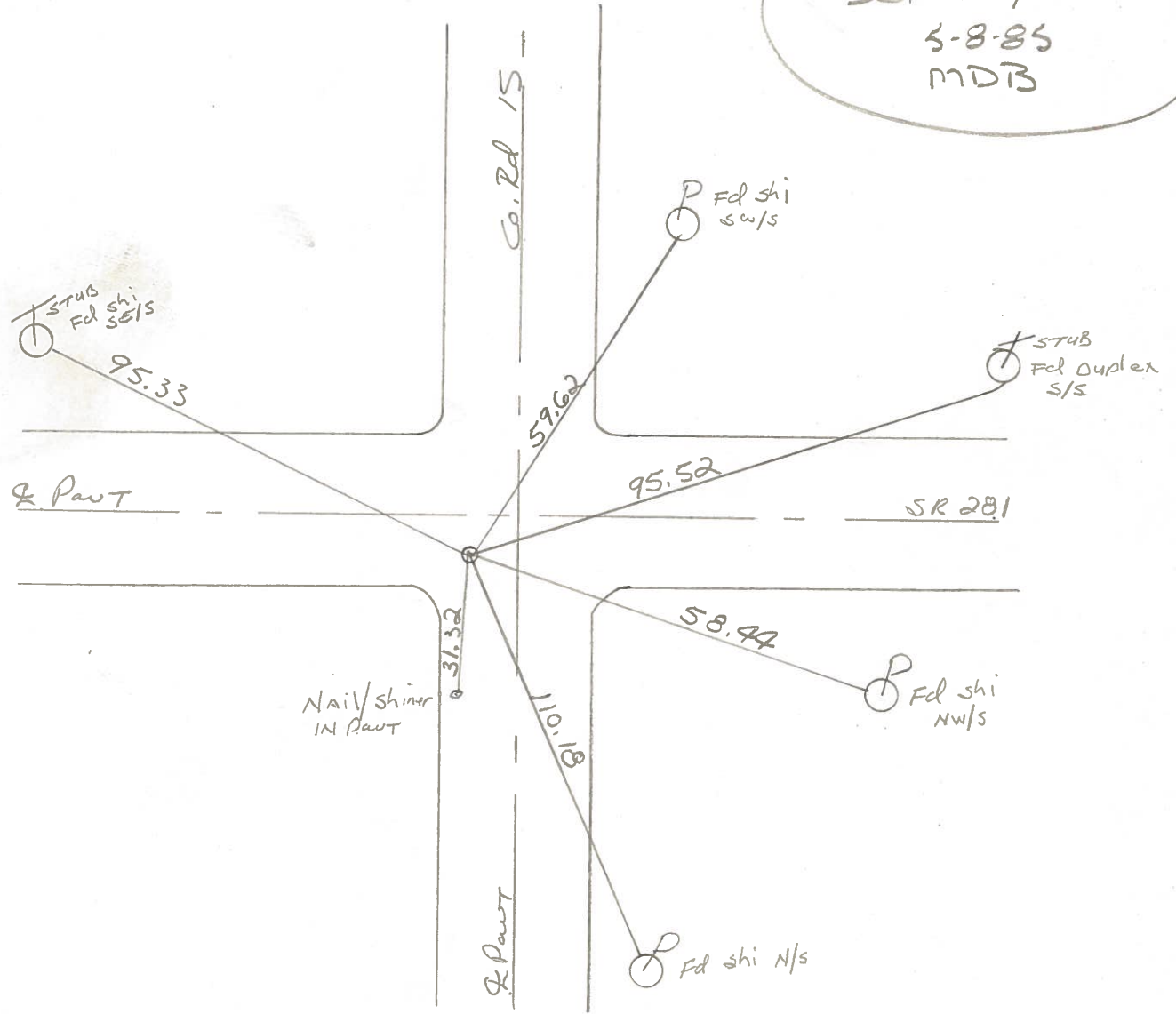
Temp. 70°



Fd P.K./washer @ surface  
4.8' RT. of & Pawt SR281  
3.5' West of & Pawt Co. Rd. 15

SLM = 206 + 02

Set P.K./WASHER  
5-8-85  
MDTB



O.D.O.T. DISTRICT 2 SURVEY OFFICE

PERSONNEL

REFERENCE NO. 9

SHEET 9 OF 13

NOTES HOFFMAN

H.C. HOUSEHOLDER

DATE 10-19-84

ROUTE SR-281

R.C. BARNHISEL

WEATHER \_\_\_\_\_

COUNTY HENRY

TEMP. \_\_\_\_\_

TOWNSHIP FLAT ROCK

SECTION 26

T 4 N R 6 E

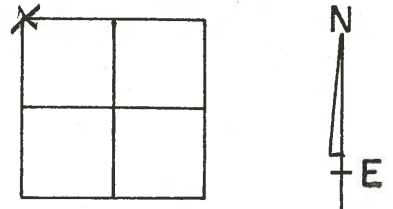
TYPE MONUMENT STONE

ON SURFACE - BELOW 14"

LEFT- & PAV'T. - RIGHT 5'

TO EDGE PAVEMENT

S.L.M. 206+16



SET PK/WASHER  
10-19-84

SET  
NAIL+SHI  
SE/S

± TWP. RD 15

SET SHI  
SWS

DUPLEX S/S

± S.R. 281

5'

95.33

59.62

95.54

SET N/SHI  
ON WE.D

31.31

3.5

58.48

NAIL/SHI  
NW/S

110.15

FD  
SHI N/S

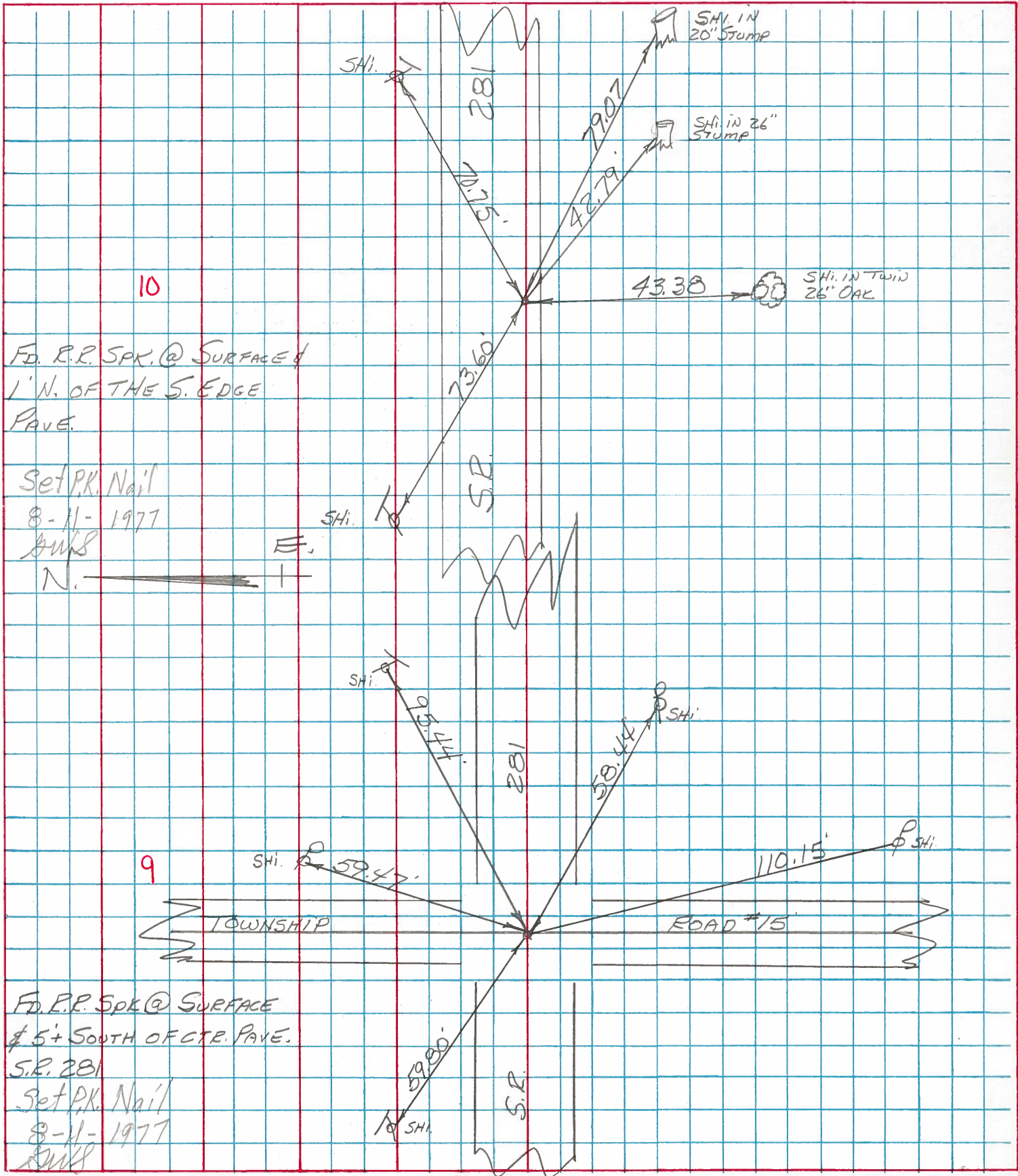
FOUND RR. SPK OVER STONE.  
PUNCHED RR. SPK OVER STONE

STONE IS 14" DEEP. REPLACED CTR  
7-23-76

PERSONNEL	TITLE	PERSONNEL	TITLE
BURNSIDE			
SMITH			
BOWERS			
MEAD			

COUNTY HENRY DATE 6-24-77  
 S. R. 281 WEATHER Cloudy  
 SEC. \_\_\_\_\_ TEMP. +74°

DESCRIPTION \_\_\_\_\_ LEFT \_\_\_\_\_ CENTER LINE \_\_\_\_\_ RIGHT \_\_\_\_\_ JOB NO. \_\_\_\_\_





# HENRY COUNTY ENGINEER'S OFFICE CORNER STONE RECOVERY PROGRAM

Sht. 2 of 13  
S.R. 281

TOWNSHIP FLATROCK

DATE OK-6-24-77 STATE  
7-23-76

SECTION 26

WEATHER CLEAR & WARM

T4N, R6E

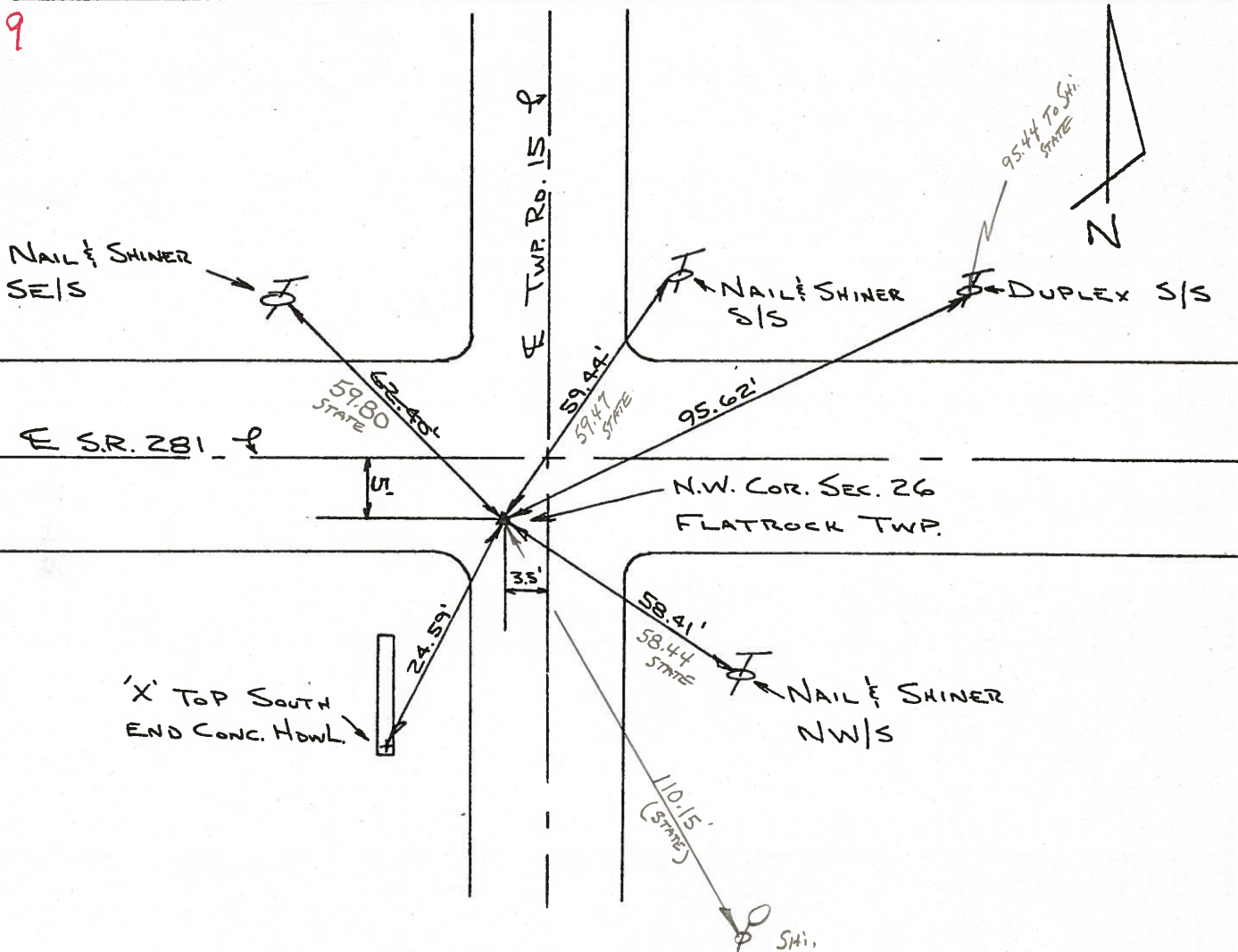
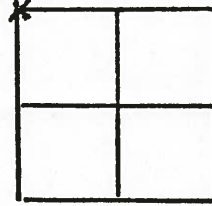
TEMP \_\_\_\_\_

PERSONNEL JG

BB

SS

MS



FOUND R.R. SPK. OVER STONE. STONE IS 14" DEEP  
REPLACED CTR. PUNCHED R.R. SPK. OVER STONE. STONE  
IS 5' SOUTH OF E S.R. 281 & 3.5' WEST OF E TWP. RD. 15.  
P.K.'S 6' N. & 6' W.

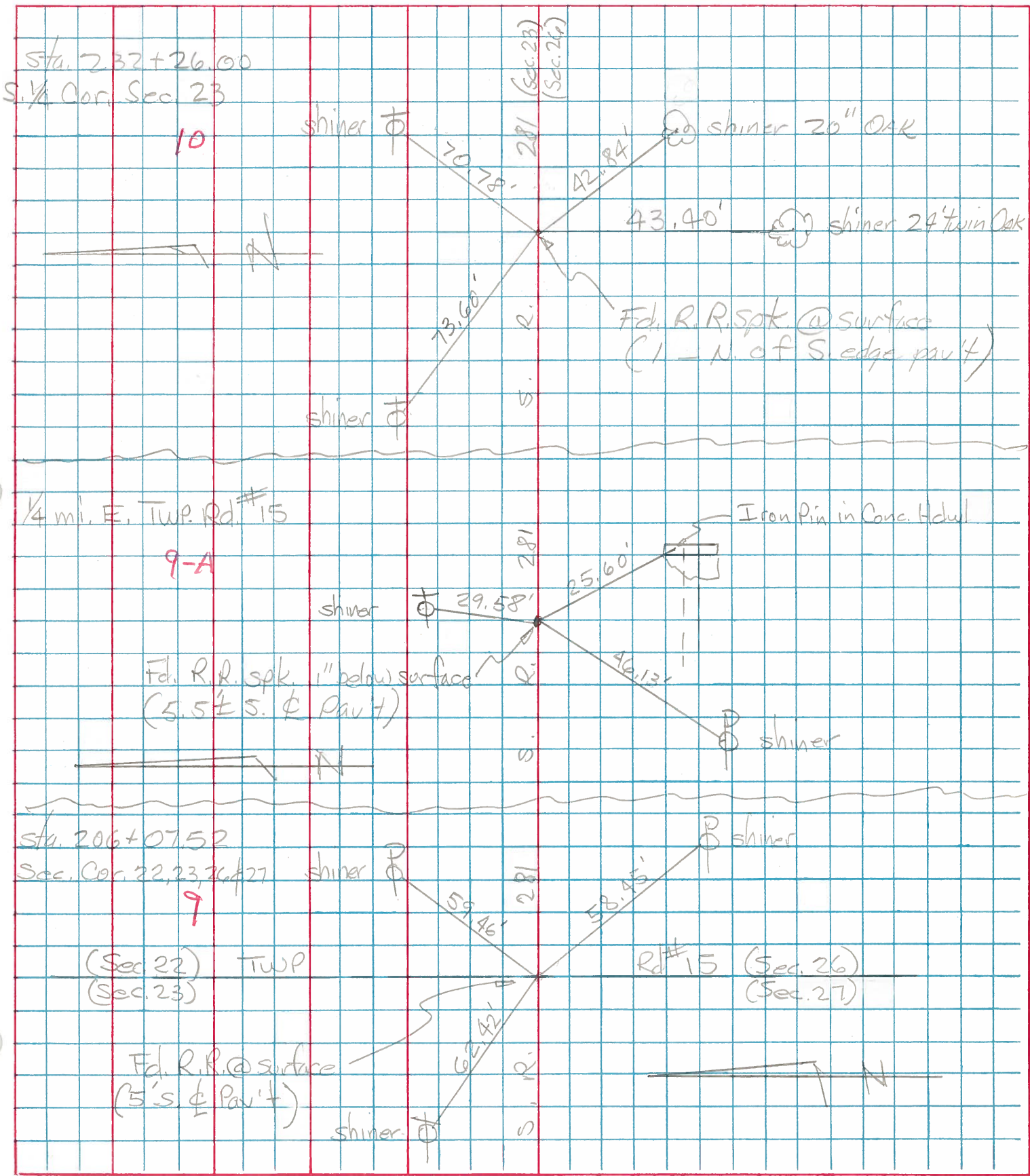
SET P.K.  
8-11-77

Copied:  
Painted:

PERSONNEL	TITLE	PERSONNEL	TITLE
Tomsic			
Neuser			
Vanyo			
Granata			

COUNTY HENRY DATE Nov. 7, 1974  
 S. R. 281 WEATHER \_\_\_\_\_  
 SEC. Flatrock Twp. TEMP. \_\_\_\_\_

DESCRIPTION \_\_\_\_\_ LEFT \_\_\_\_\_ CENTER LINE \_\_\_\_\_ RIGHT \_\_\_\_\_ JOB NO. \_\_\_\_\_





PERSONNEL TITLE PERSONNEL TITLE

COUNTY Henry

DATE 11-29-57

S. R. # 281

WEATHER

SEC. "H"

TEMP.

DESCRIPTION

LEFT

CENTER LINE

RIGHT

JOB NO.

#6	S.E. COR. Sec. 20 Sta. 100+51.58 Stake in Tile Co. Rd. #17	Flatrock Twp. 5/11/64 (5)	36.65' N.W. To spk. in P. Pole 61.10' N.E. To spk. in 16" Hickory 32.40' S.E. To ⊗ on N.E. wing 32.10' S.W. To ⊗ on N.W. wing.
#7	1/4 COR. Sec. 21 Sta. 126+92.90	5/11/64 (6)	29.96' S. To spk. in W. side Cor. Post 33.56' S.E. To Sign Post on fence line 44.90' S.W. To Iron Pin 25.50' N.W. To Hole ctr. Top of Drive Pipe E. side C.M.P. 31.18' N.E. To iron sign Post.
#8	S.E. COR. Sec. 21 Sta. 153+21.95 stone 4" under surface Twp. Rd. #16	5/11/64 (7)	38.30' N.W. To ctr. 1" Iron Pipe 27.87' S.E. To Reinforcing rod in wingwall 28.97' S.W. To ⊗ in wingwall 59.57' S.E. To shi. in P. Pole 39.95' N.W. To shi. in P. Pole 48.42' N.E. To shi. in T. Pole
#9	1/4 stone Sec. 22 Sta. 179+63.70' 4' N. of s. edge post 5/11/64	(8)	73.56' <sup>44'</sup> N.E. ⊗ W. end Cor. Metal/Dk Pipe 29.18' N.W. To shi. in T. Pole 20.45' S. To spk. in Cor. Post 33.87' S.E. To iron sign Post
#10	S.E. COR. Sec. 22 Sta. 206+407.52 Stone No Pin Twp. Rd. #15 5/11/64	(9)	59.78' N.E. To spk. in P. Pole 63.80' N.W. To shi. in T. Pole 18.92' S.E. To face broken off Rail Pipe 23.74' S.E.S. To Near side Rail P. 15.85' S.W. To Near side Rail P. 24.57' S.S.W. To "H" in S. end W. Hdway



PERSONNEL	TITLE	PERSONNEL	TITLE	COUNTY	DATE
Tomsic				HENRY	Nov. 7, 1974
Weuser				S. R.	281
Vandy				SEC.	Flatrock TWP.
Granata				WEATHER	
				TEMP.	

DESCRIPTION	LEFT	CENTER LINE	RIGHT	JOB NO.
-------------	------	-------------	-------	---------

