

O.D.O.T. DISTRICT 2 SURVEY OFFICE (USE ONLY)

PERSONNEL

REFERENCE NO. 10

SHEET 14 OF 20

NOTES HAGEMEYER

DATE 6-7-18

ROUTE SR 281

H.C. LEU

WEATHER CLOUDY

COUNTY HENRY

R.C. HAGEMEYER

TEMP. 64°

TOWNSHIP FLAT ROCK

SECTION 26

DWG BY JAMES

PID 102763

T 4 N R 6 E

TYPE MONUMENT MAG/WASHER

ON SURFACE - ~~BELOW~~ ON

OFFSET  $\varnothing$  PAVEMENT 8.3' ~~LT~~ : RT

2.0' TO RT EDGE PAVEMENT

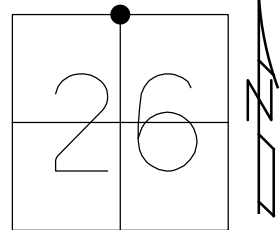
STATION: 232+32.13

HORIZ.DATUM: NAD83 2011

GEOID: NAVD88 2012A

GRID: NORTHING: 592940.514

EASTING: 1516992.456



- RECORD:  
 FD P.K./WASHER  
 1985  
 SET P.K./WASHER  
 8-28-95, KPM  
 FD P.K./WASHER  
 8-20-09, KPM  
 SET MAG/WASHER  
 10-26-09, KPM  
 FD MAG/WASHER  
 REF10  
 11-2-16, JFO  
 6-7-18, JLL  
 SET MAG/WASHER  
 1-10-18, JLL

SET SHI  
 CLUMP 6 ELMS



37.19'

**MB** SET TACK  
 RES 14-477

38.34'

$\varnothing$  SR 281

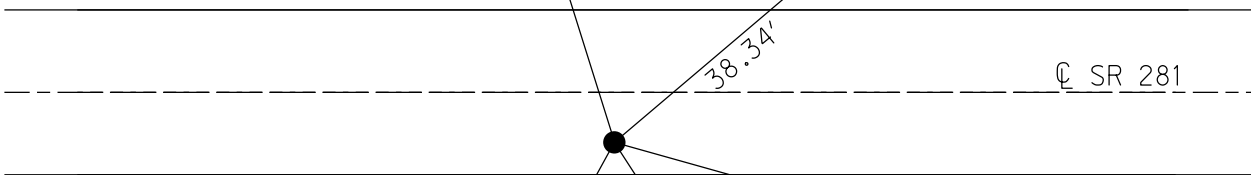
21.83' P

36.80' P

92.10'

FD "X"s  
 TOP CMP

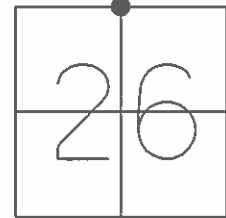
$\varnothing$  SET  
 SHI



O.D.O.T. DISTRICT 2 SURVEY OFFICE (USE ONLY)

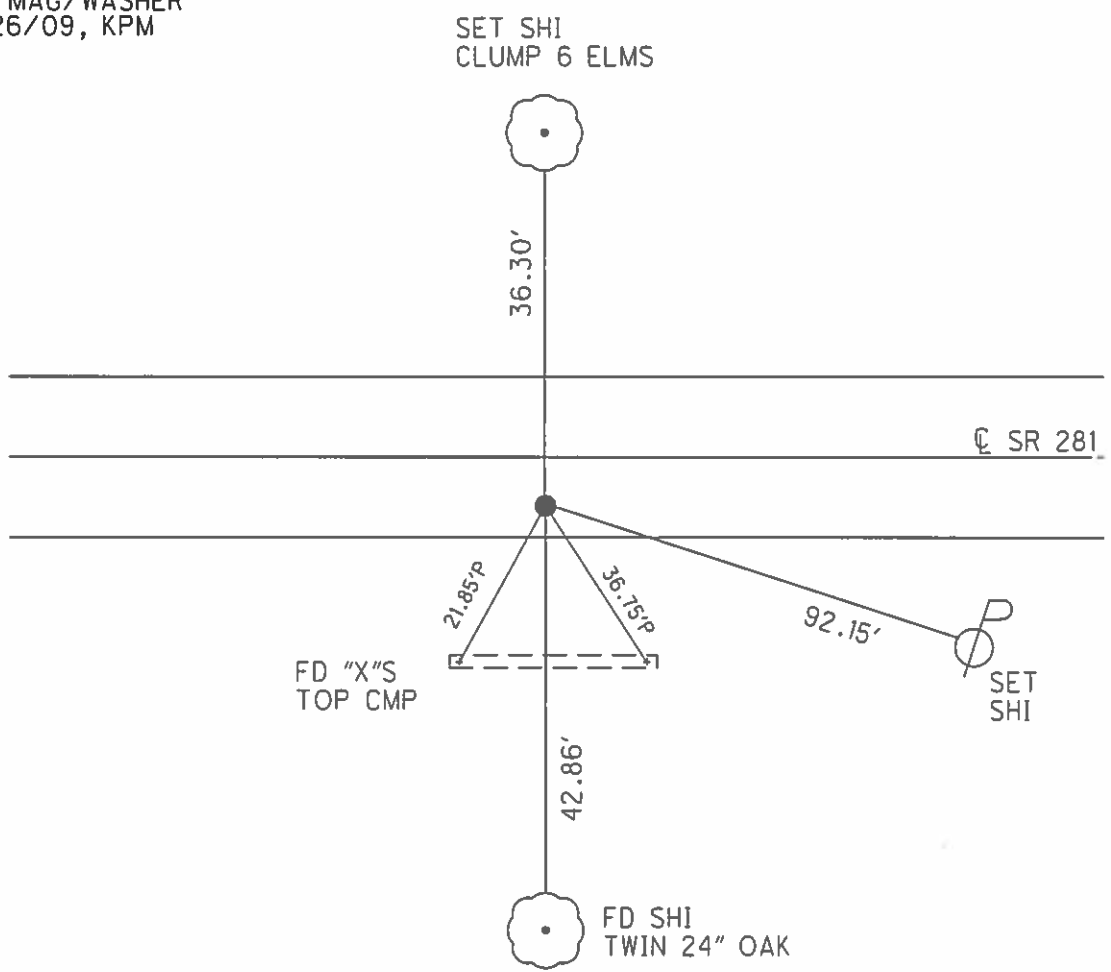
PERSONNEL \_\_\_\_\_ REFERENCE NO. 10 SHEET 12 OF 14  
 NOTES MOSER \_\_\_\_\_ DATE 8/20/09 ROUTE SR 281  
 H.C. GOLDBERG \_\_\_\_\_ WEATHER CLOUDY COUNTY HENRY  
 R.C. MOSER \_\_\_\_\_ TEMP. 80° TOWNSHIP FLAT ROCK  
 \_\_\_\_\_ SECTION 26  
 \_\_\_\_\_ T 4 N R 6 E

TYPE MONUMENT P.K./WASHER  
 ON SURFACE - ~~BELOW~~ ON \_\_\_\_\_  
~~LEFT - C~~ PAV'T - RIGHT 8.4'  
2.0' TO RT EDGE PAVEMENT  
 S.L.M. 232+28



GRID: NORTHING: 592940.535 EASTING: 1516992.442

RECORD:  
 FD P.K./WASHER  
 1985  
 SET P.K./WASHER  
 8/28/95, KPM  
 SET MAG/WASHER  
 10/26/09, KPM



# O.D.O.T. DISTRICT 2 SURVEY OFFICE

PERSONNEL

REFERENCE NO. 10

SHEET 11 OF 13

NOTES Huss

H.C. Vaw Dusen

R.C. Rousos

DATE 6-13-95

WEATHER Sunny

TEMP. +70°F

ROUTE S.R. 281

COUNTY HENRY

TOWNSHIP FLATROCK

SECTION 26

T 4 N R 6 E

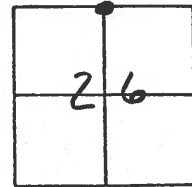
TYPE MONUMENT PK/WASHER

ON SURFACE - ~~BELOW~~ YES

~~LEFT - C PAV'T.~~ - RIGHT 8.4' RT

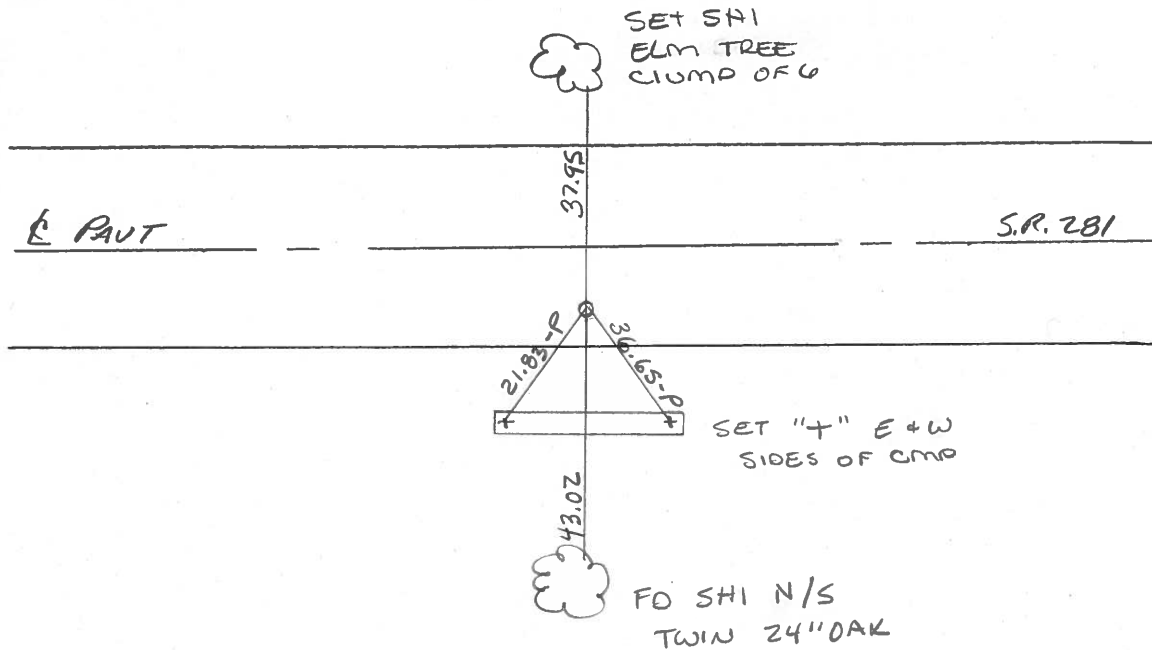
1.9' TO RT EDGE PAVEMENT

S.L.M. 232+34



Record 1985  
FD PK/WASHER @ SURFACE

SET PK/WASHER  
8-28-95



County HENRY S.R. 281

Township FLATROCK

Section 26

T4N, R6E

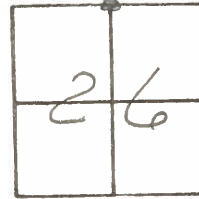
Personnel Hoffman R.C.  
BARNHISEL H.C.

#10

Date 4-15-85

Weather Clear

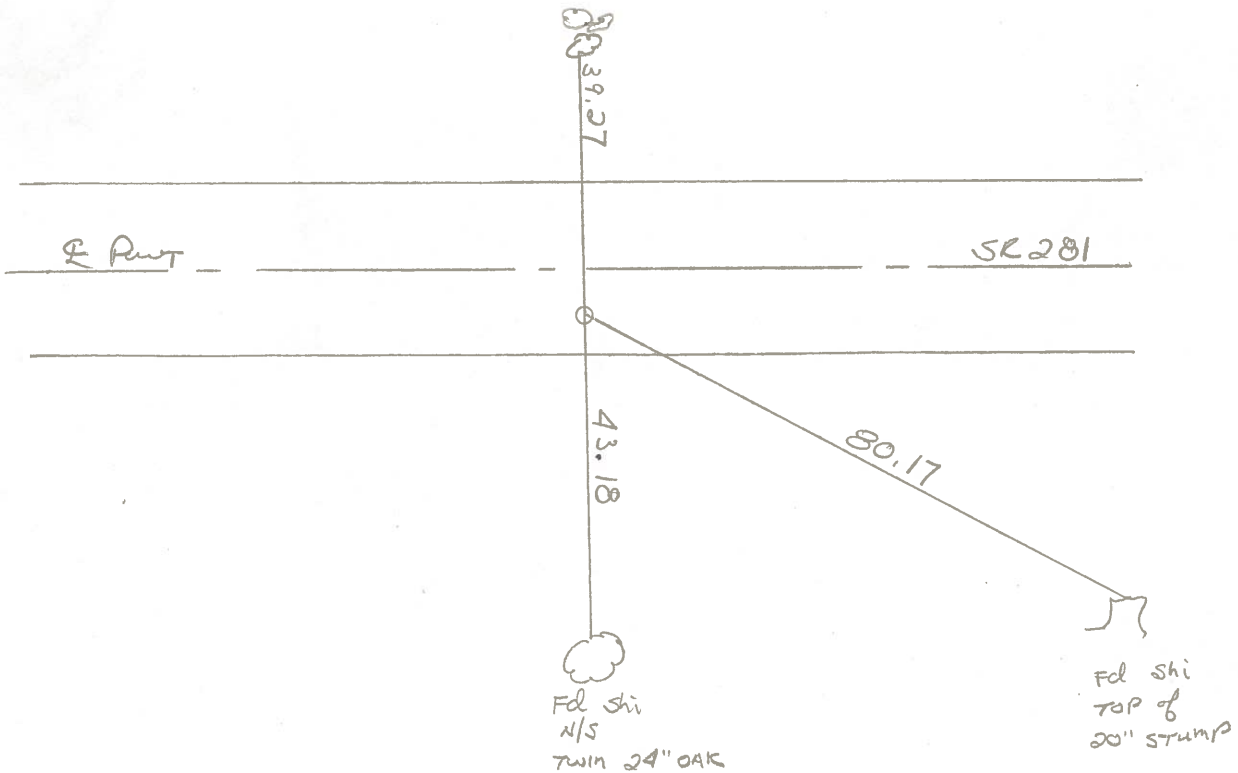
Temp. 70°



Fd P.K./washer @ surface  
9.0' RT. of & PWT  
1.3' TO RT EP.

SLM 232+16

Set P.K./Washer  
5-8-85  
MDS



# O.D.O.T. DISTRICT 2 SURVEY OFFICE

PERSONNEL \_\_\_\_\_

REFERENCE NO. 10

SHEET 10 OF 13

NOTES HOFFMAN

H.C. HOUSEHOLDER

DATE 10-19-84

ROUTE SR-281

R.C. BARNHISEL

WEATHER \_\_\_\_\_

COUNTY HENRY

TEMP. \_\_\_\_\_

TOWNSHIP FLATROCK

SECTION 26

T 4 N R 6 E

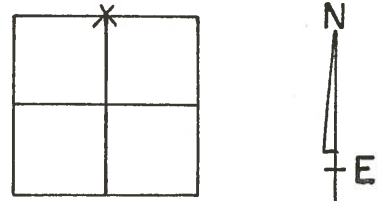
TYPE MONUMENT STONE

ON SURFACE - BELOW 10"

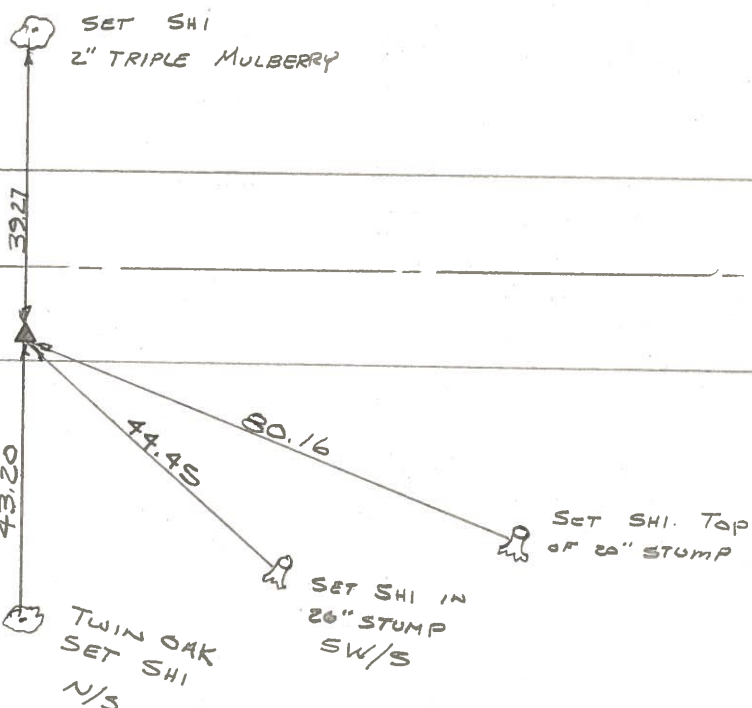
LEFT- & PAV'T. - RIGHT \_\_\_\_\_

1 TO EDGE PAVEMENT

S.L.M. 232+40



SET PK./WASHER  
10-19-84



SR. 281

FOUND RR. SPK OVER STONE. STONE 10" DEEP.  
REPLACE CTR. PUNCHED RR. SPK OVER STONE  
STONE IS 1' NORTH OF SOUTH EDGE SR. 281.  
7-23-76

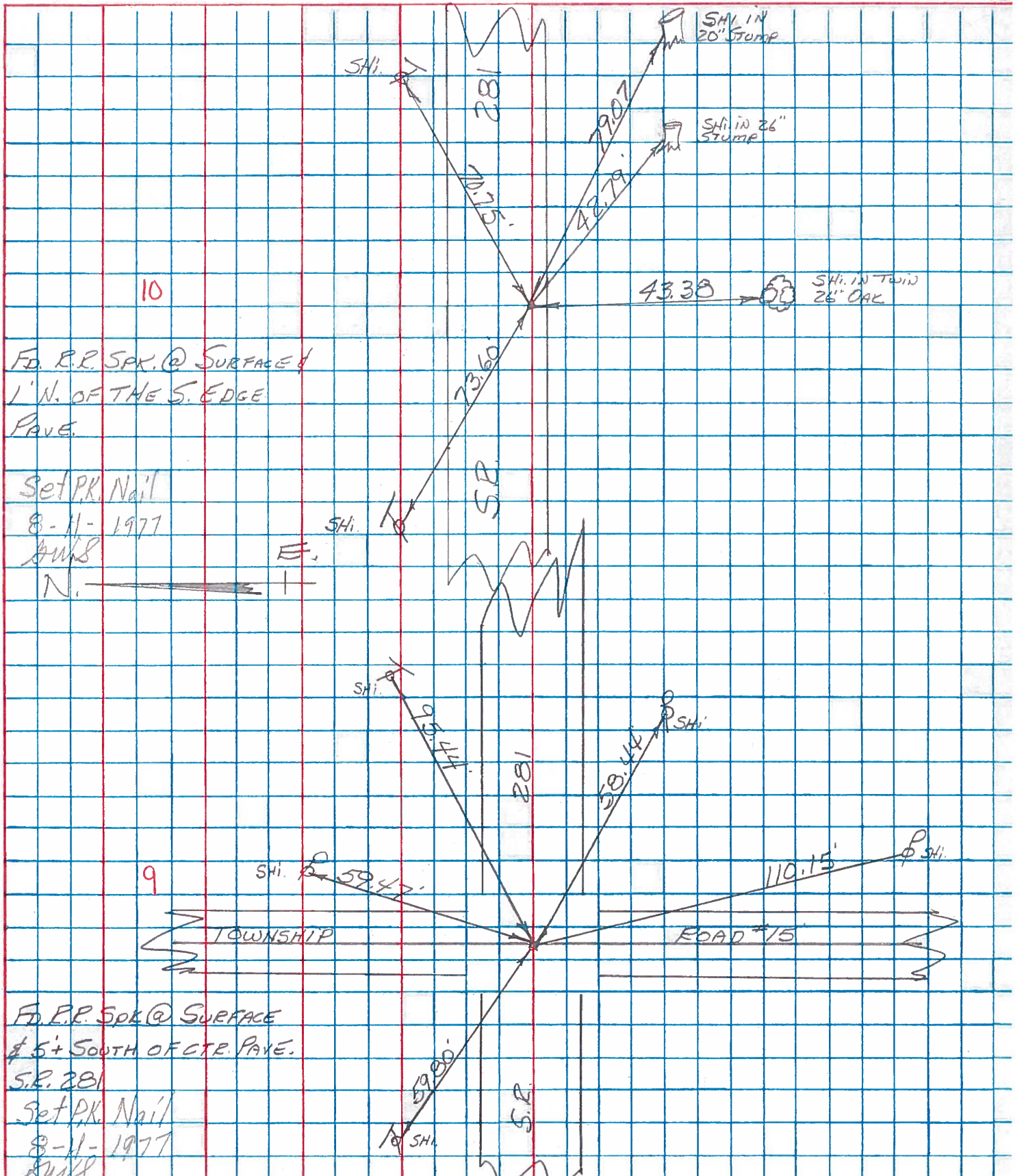
PERSONNEL	TITLE	PERSONNEL	TITLE
BURNSIDE			
SMITH			
POWERS			
MEAD			

COUNTY HENRY DATE 6-24-77

S. R. 281 WEATHER Cloudy

SEC. \_\_\_\_\_ TEMP. +74°

DESCRIPTION \_\_\_\_\_ LEFT \_\_\_\_\_ CENTER LINE \_\_\_\_\_ RIGHT \_\_\_\_\_ JOB NO. \_\_\_\_\_



# HENRY COUNTY ENGINEER'S OFFICE CORNER STONE RECOVERY PROGRAM

Sht. 10 of 13  
SR. 281

TOWNSHIP FLATROCK

DATE OK-6-24-77 - STATE  
7-23-76

SECTION 26

WEATHER CLEAR & WARM

T4N, R6E

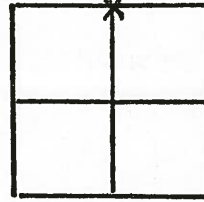
TEMP \_\_\_\_\_

PERSONNEL JG

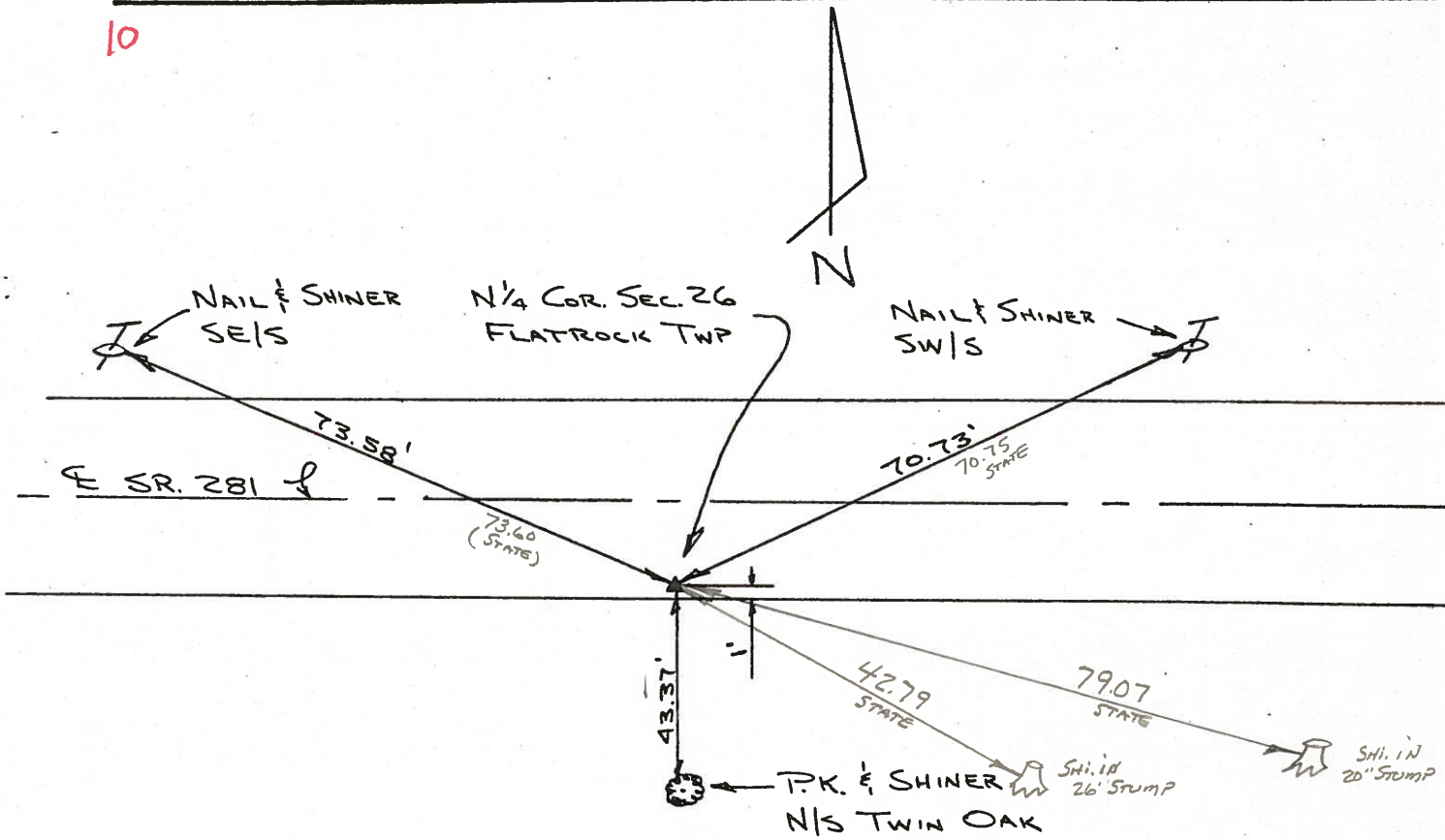
BB

SS

MS



10



FOUND R.R. SPK. OVER STONE. STONE IS 10" DEEP.  
REPLACED CTR. PUNCHED R.R. SPK. OVER STONE.  
STONE IS 1' NORTH OF SOUTH EDGE S.R. 281.  
P.K.'S 6' N. & 6' W.

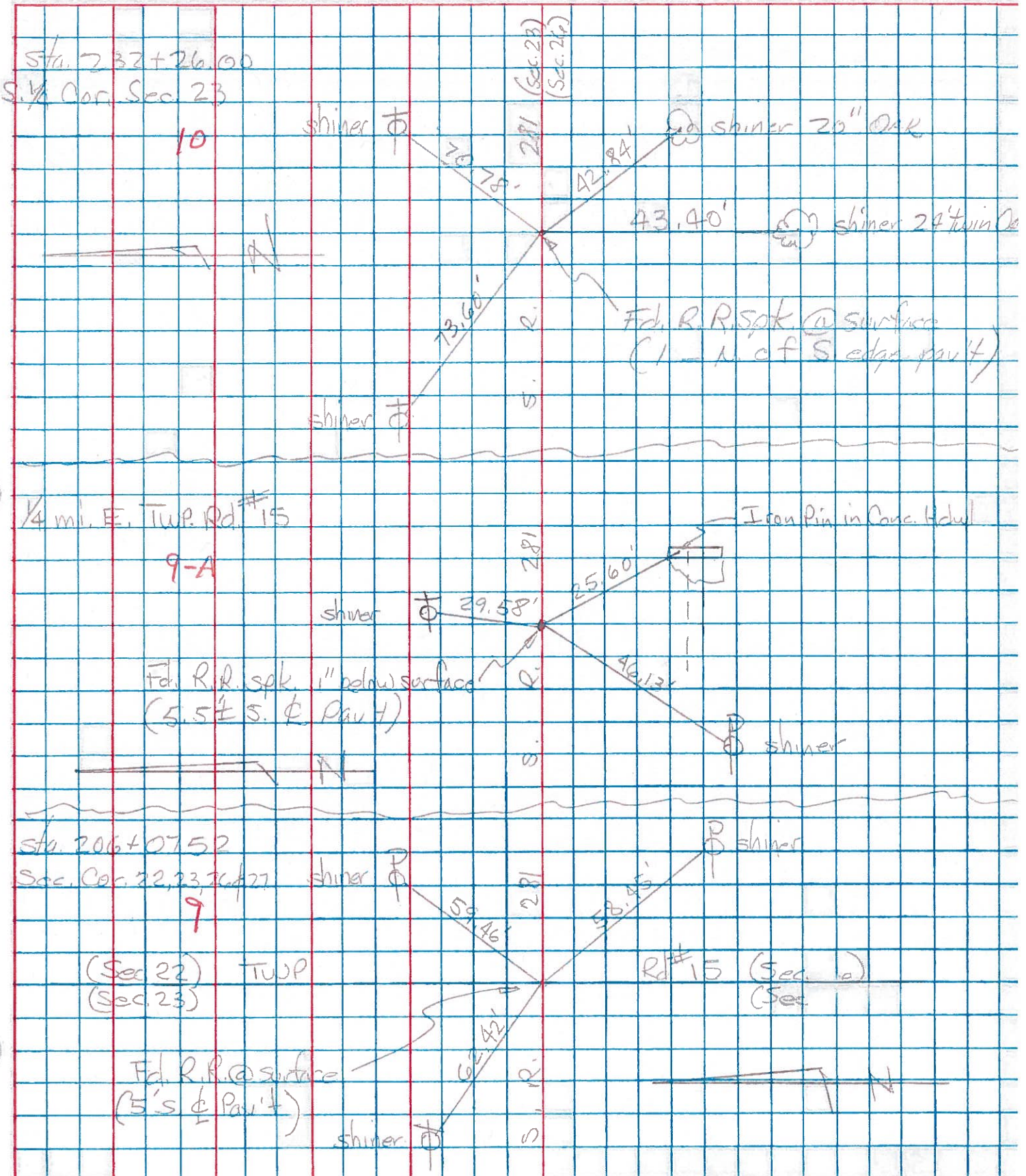
SET P.K. NAIL  
8-11-77

Copied:  
Printed:

PERSONNEL	TITLE	PERSONNEL	TITLE
Tomsic			
Weuser			
Vandy			
Granata			

COUNTY HENRY DATE Nov. 7, 1974  
 S. R. 281 WEATHER \_\_\_\_\_  
 SEC. Flatrock Twp. TEMP. \_\_\_\_\_

DESCRIPTION LEFT CENTER LINE RIGHT JOB NO.





PERSONNEL TITLE PERSONNEL TITLE

COUNTY Henry DATE 11-29-57

S. R. # 281 WEATHER 10-24-60

SEC. "H" TEMP.

DESCRIPTION Points #11 Thru #30 Replaced by Knape JOB NO.

	LEFT	CENTER LINE	RIGHT
#11	<p>1/4 Sec. COR. Sta. 232+26 Stone 4" under Surface R.R. Spk. FOR DIA - 1' N. of S. Edge Pav't 5/11/64</p>		<p>70.72 N.E. To Shiner T. Pole 45.0' N. To Iron Pin on fence line 41.85' N.W. To Iron Gas pipe 1" 43.83' S. To Shiner in W. Side <sup>22"</sup> <del>76"</del> 43.60 Twin oak 42.96 43.07' S.E. To Shiner in W. side <del>43.01'</del> 20" oak 79.71, 79.26' 79.32' S.S.E. To Shiner in 16" oak 79.63' N.W. To Shiner T. Pole. 73.63'</p>
		(10)	
#12	<p>Co. Rd. #14 S.E. COR. Sec. 23 Sta. 258+42.65 Stone 8" under Surface Fd. R.R. Nail. R.R. Spk. 5/11/64</p>		<p>31.80' N.E. To ⊗ Wingwall 32.85' S.E. To ⊗ Wingwall 26.25' N.W. To ⊗ Wingwall 30.94' S.W. To ⊗ Wingwall 31.03</p>
		(11)	Plumbed
#12A	<p>5/4 Post Sec. 24 Sta. 284+93.96 R.R. Spk. 5/11/64</p>		<p>36.<sup>17</sup><sub>10</sub>' N.E. To Shiner in P. Pole Plumbed 37.<sup>53</sup><sub>80</sub>' S.E. To Ctr. Top Rim 12" C.M.P. E. end Plumbed - 27.<sup>10</sup><sub>42</sub>' S.W. To ctr. Top Rim 12" C.M.P. W. end. <del>20.79' S. To spk in N. side 36"</del> 29.93 N. To + Top ctr. W. end C.M.P. <del>Entr.</del> De. Pipe.</p>
		(12)	
#13	<p>Intersection S.R. #108 &amp; 281 Iron Pin 5/11/64</p>		<p>112.71' <del>60.19'</del> N.E. To spk. P. Pole 57.39 51.55' N.W. To spk. T. Pole Plum 99.67 53.70' S.E. To spk. P. Pole 90.90 40.00' S.W. To spk. T. Pole .87</p>
		(12A)	Plum