

O.D.O.T. DISTRICT 2 SURVEY OFFICE (USE ONLY)

PERSONNEL

REFERENCE NO. 11

SHEET 15 OF 20

NOTES HAGEMEYER

DATE 6-7-18

ROUTE SR 281

H.C. LEU

WEATHER CLOUDY

COUNTY HENRY

R.C. HAGEMEYER

TEMP. 64°

TOWNSHIP FLAT ROCK

SECTION 26

DWG BY JAMES

PID 102763

T 4 N R 6 E

TYPE MONUMENT MAG/WASHER

ON SURFACE - ~~BELOW~~ ON

OFFSET  $\varnothing$  PAVEMENT 3.3', 5.5' L CR 14 LT : ~~RT~~

6.4' TO LT EDGE PAVEMENT

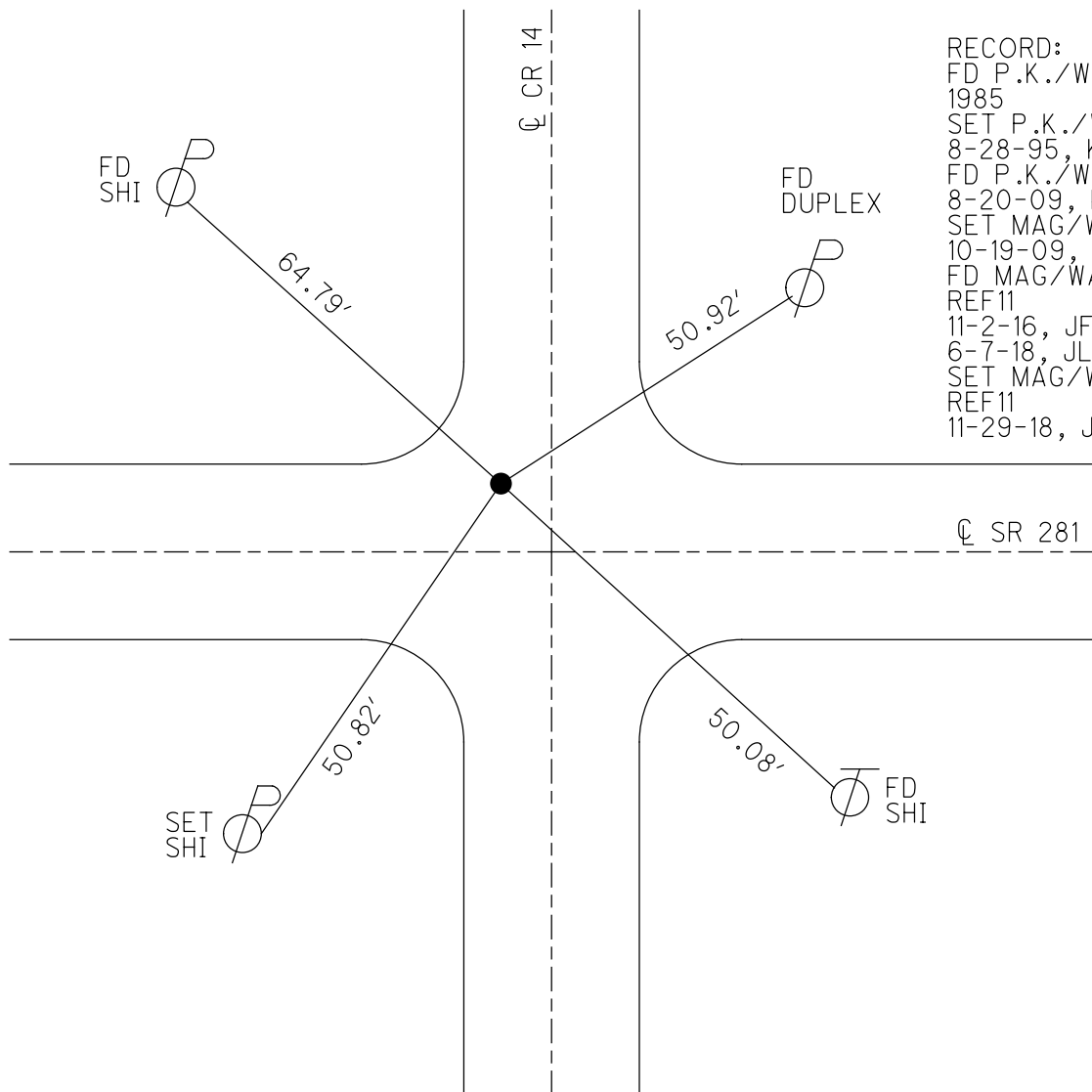
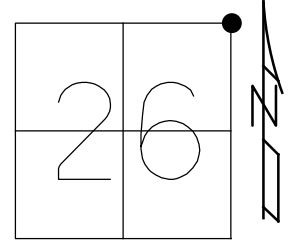
STATION: 258+49.04±

HORZ.DATUM: NAD83 2011

GEOID: NAVD88 2012A

GRID: NORTHING: 592929.156

EASTING: 1519609.719

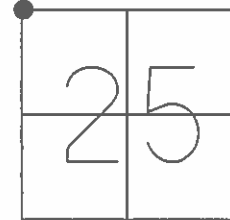


RECORD:  
 FD P.K./WASHER  
 1985  
 SET P.K./WASHER  
 8-28-95, KPM  
 FD P.K./WASHER  
 8-20-09, KPM  
 SET MAG/WASHER  
 10-19-09, KPM  
 FD MAG/WASHER  
 REF11  
 11-2-16, JFO  
 6-7-18, JLL  
 SET MAG/WASHER  
 REF11  
 11-29-18, JLL

O.D.O.T. DISTRICT 2 SURVEY OFFICE (USE ONLY)

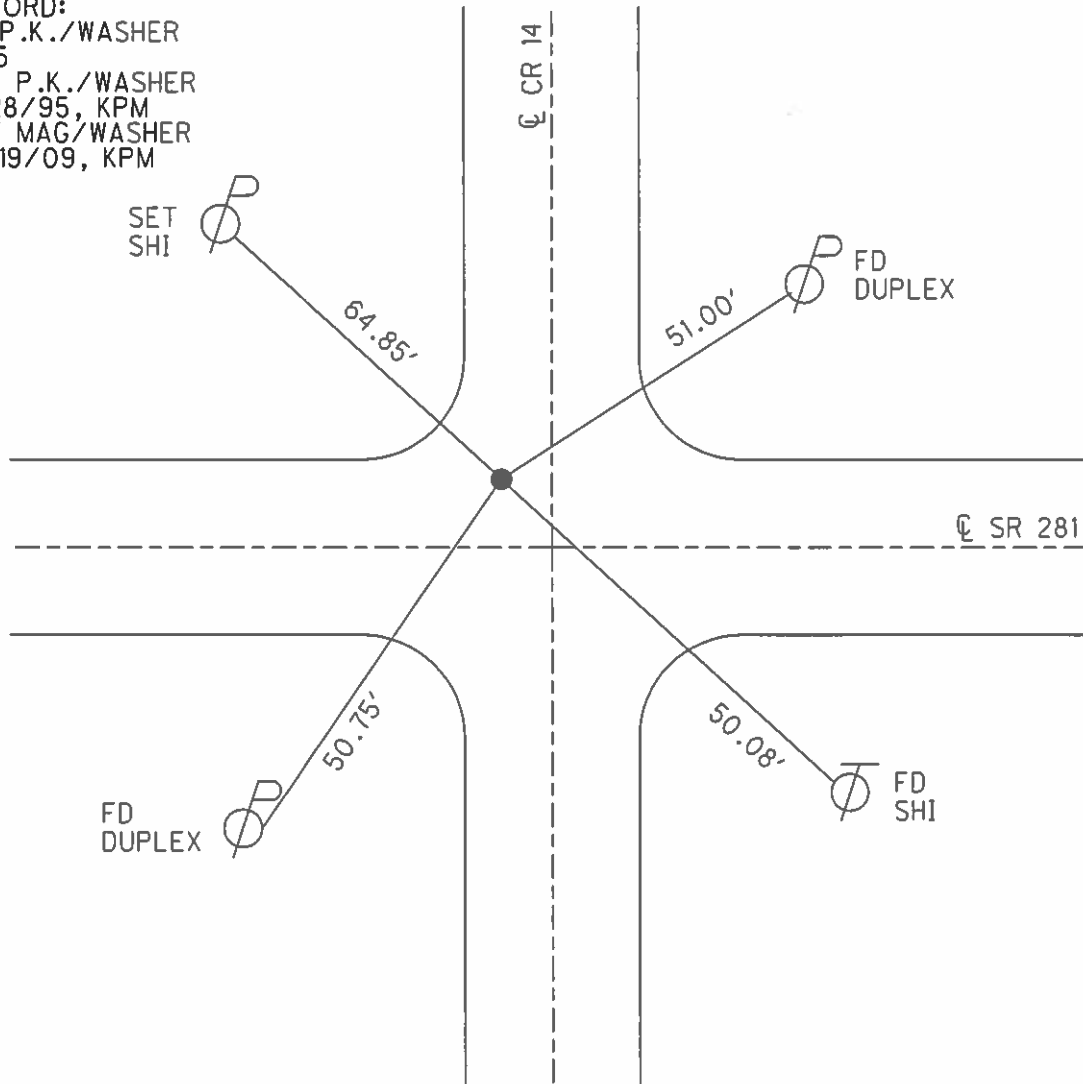
PERSONNEL \_\_\_\_\_ REFERENCE NO. 11 SHEET 13 OF 14  
 NOTES MOSER DATE 8/20/09 ROUTE SR 281  
 H.C. GOLDBERG WEATHER CLOUDY COUNTY HENRY  
 R.C. MOSER TEMP. 80° TOWNSHIP FLAT ROCK  
 \_\_\_\_\_ SECTION 25  
 \_\_\_\_\_ T 4 N R 6 E

TYPE MONUMENT P.K./WASHER  
 ON SURFACE - ~~BELOW~~ ON \_\_\_\_\_  
 LEFT - ☉ PAV'T - ~~RIGHT~~ 3.1', 5.5' W/CR 14 S  
6.4' TO LT EDGE PAVEMENT  
 S.L.M. 258+45



GRID: NORTHING: 592929.131 EASTING: 1519609.670

RECORD:  
 FD P.K./WASHER  
 1985  
 SET P.K./WASHER  
 8/28/95, KPM  
 SET MAG/WASHER  
 10/19/09, KPM



# O.D.O.T. DISTRICT 2 SURVEY OFFICE

PERSONNEL \_\_\_\_\_

REFERENCE NO. 11

SHEET 12 OF 13

NOTES HUSS

H.C. VAW DUSEW

R.C. ROUSOS

DATE 6-13-95

WEATHER SUNNY

TEMP. +70°

ROUTE S.R. 281

COUNTY HENRY

TOWNSHIP FLATROCK

SECTION 25

T. 4 N R. 6 E

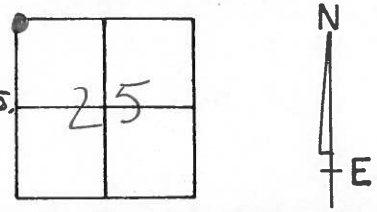
TYPE MONUMENT PK / WASHER

ON SURFACE - ~~BELOW~~ YES

LEFT - ~~C PAV'T.~~ - RIGHT 3.1 LT ~ 5.5' W. & PAV'T CR 145.

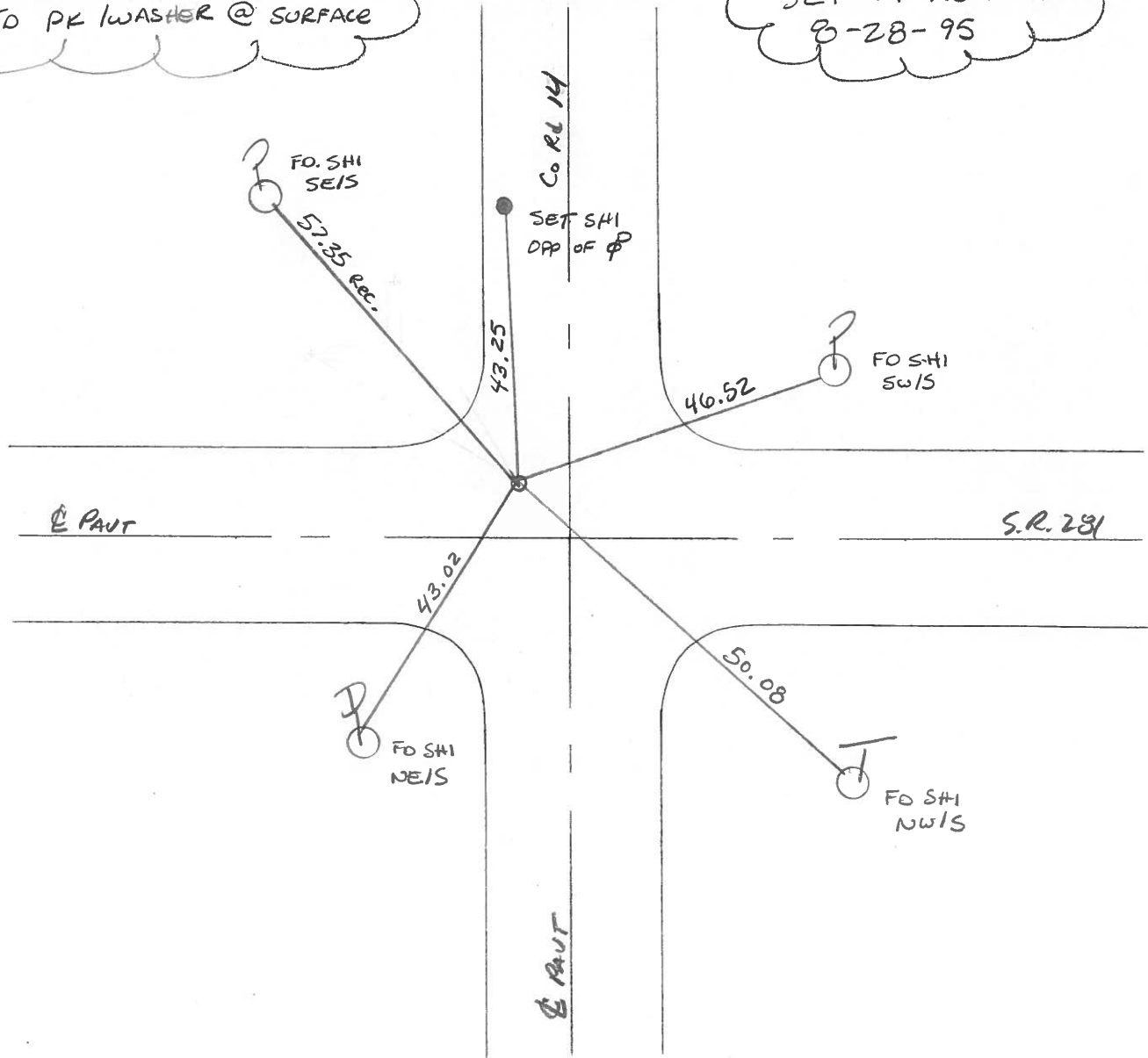
6.4 TO LT EDGE PAVEMENT

S.L.M. 258 + 54



RECORD 1985  
FO PK / WASHER @ SURFACE

SET PK / WASHER  
8-28-95



County Henry S.R. 281

Township FLATROCK

Section 25

T4N, R6E

Personnel Hoffman III

LOENRGS R.C.

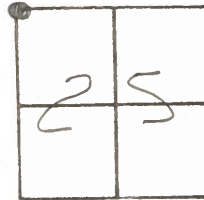
BARNHISEL H.C.

# 11

Date 4-16-85

Weather Clear

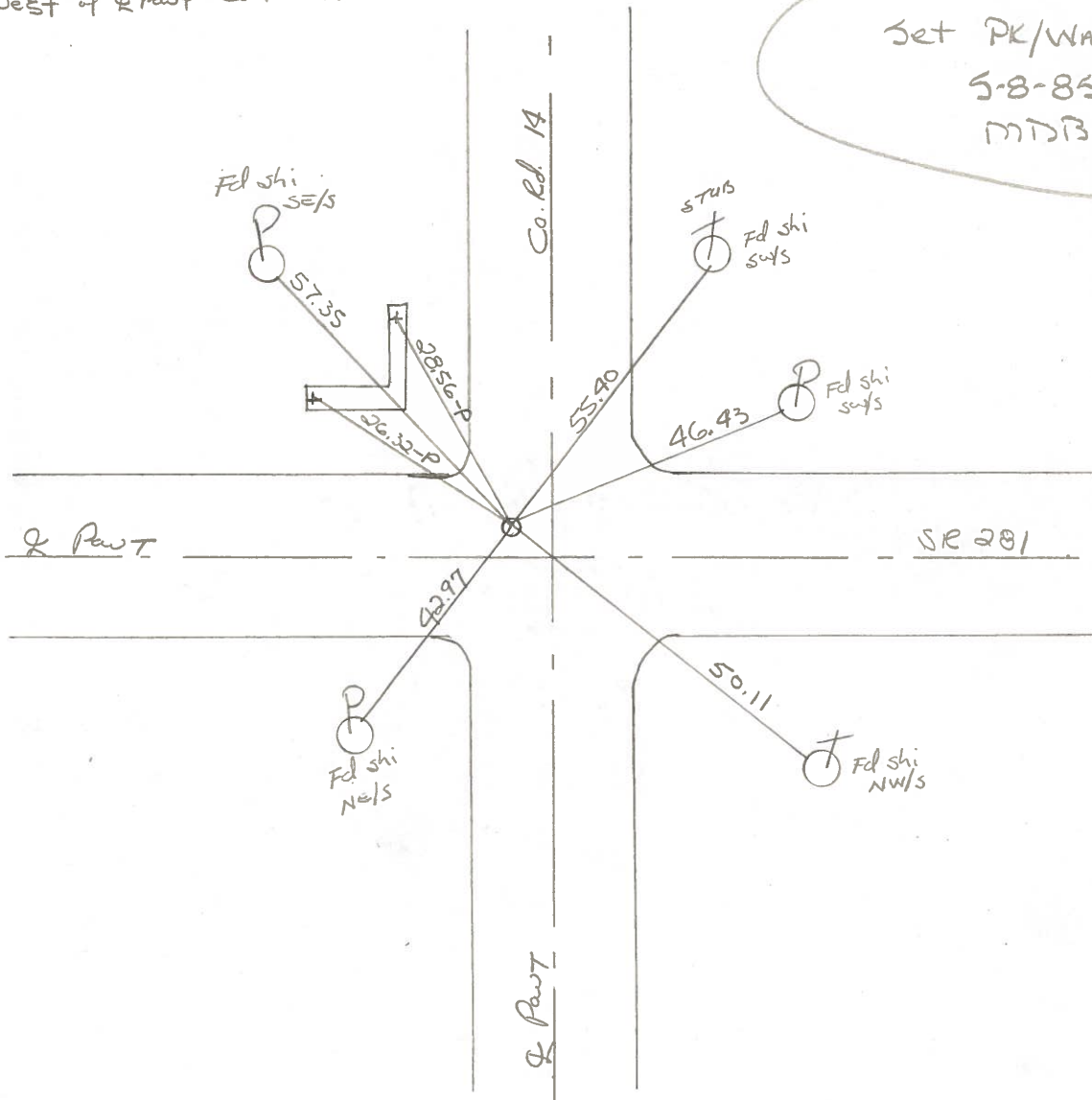
Temp. 60°



Fd P.K./washer @ surface  
 2.8' Lt. of & Part SR 281  
 4.8' west of & Part Co. Rd. 14

SLM 258+31

Set PK/Washer  
 5-8-85  
 MTSB



# O.D.O.T. DISTRICT 2 SURVEY OFFICE

PERSONNEL

REFERENCE NO. 11

SHEET 11 OF 13

NOTES HOFFMAN

H.C. BARNHISEL

DATE 10-19-84

ROUTE SR-281

R.C. HOUSEHOLDER

WEATHER \_\_\_\_\_

COUNTY HENRY

TEMP. \_\_\_\_\_

TOWNSHIP FLATROCK

SECTION 25

T 4 N R 6 E

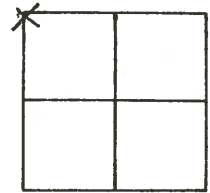
TYPE MONUMENT STONE

ON SURFACE - BELOW 13"

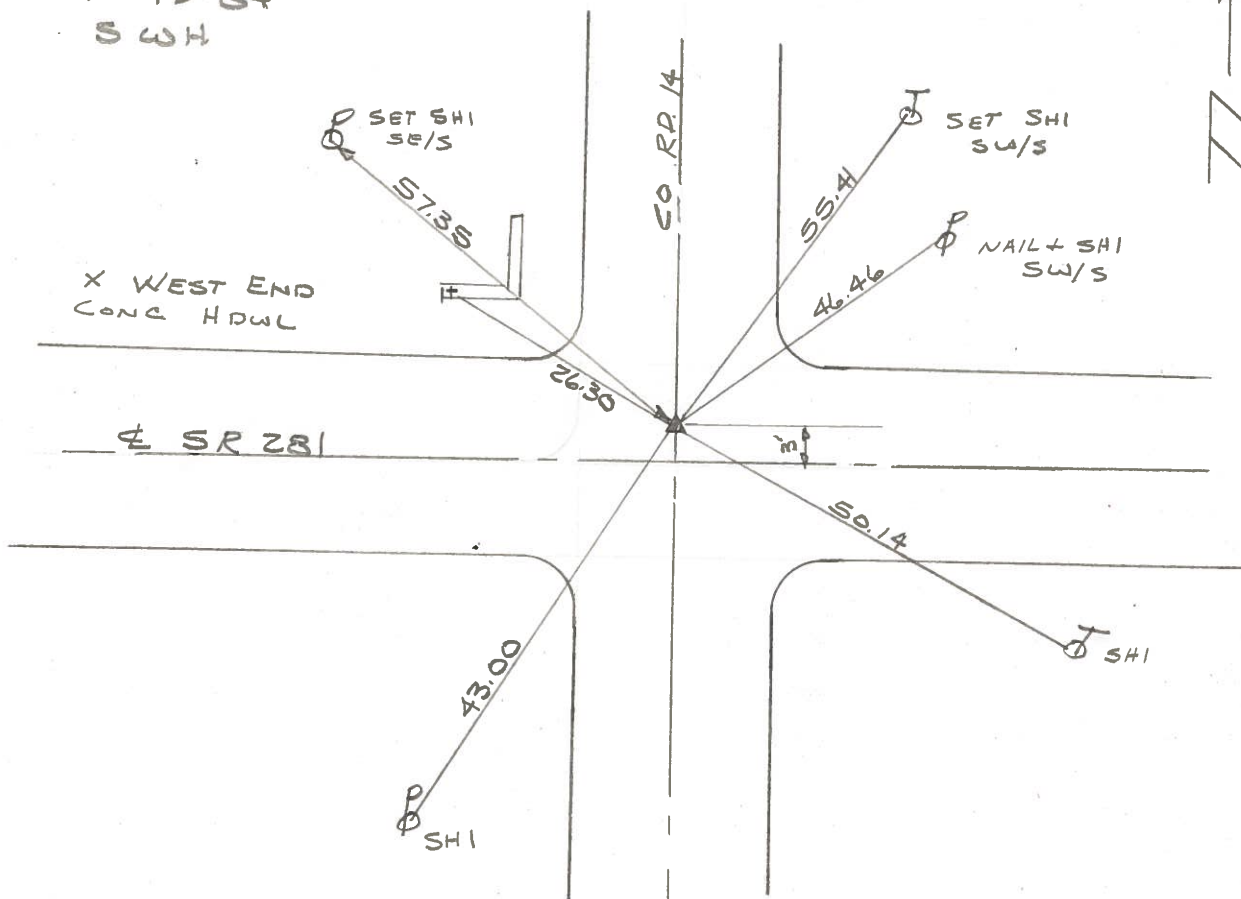
LEFT- & PAV'T. - RIGHT \_\_\_\_\_

TO \_\_\_\_\_ EDGE PAVEMENT

S.L.M. 258+61



SET P.K./WASHER  
10-19-84  
SWH



FOUND RR SPK OVER STONE. STONE IS 13" DEEP  
REPLACED CTR PUNCHED RR SPIKE OVER STONE  
7-26-76

# HENRY COUNTY ENGINEER'S OFFICE CORNER STONE RECOVERY PROGRAM

Sht. 11 of 13  
SR. 281

TOWNSHIP FLATROCK

DATE OK-6-24-77 - STATE  
7-26-76

SECTION 25

WEATHER CLEAR & WARM

T 4 N, R 6 E

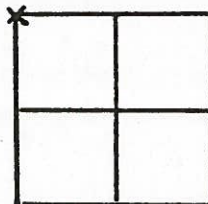
TEMP \_\_\_\_\_

PERSONNEL JG

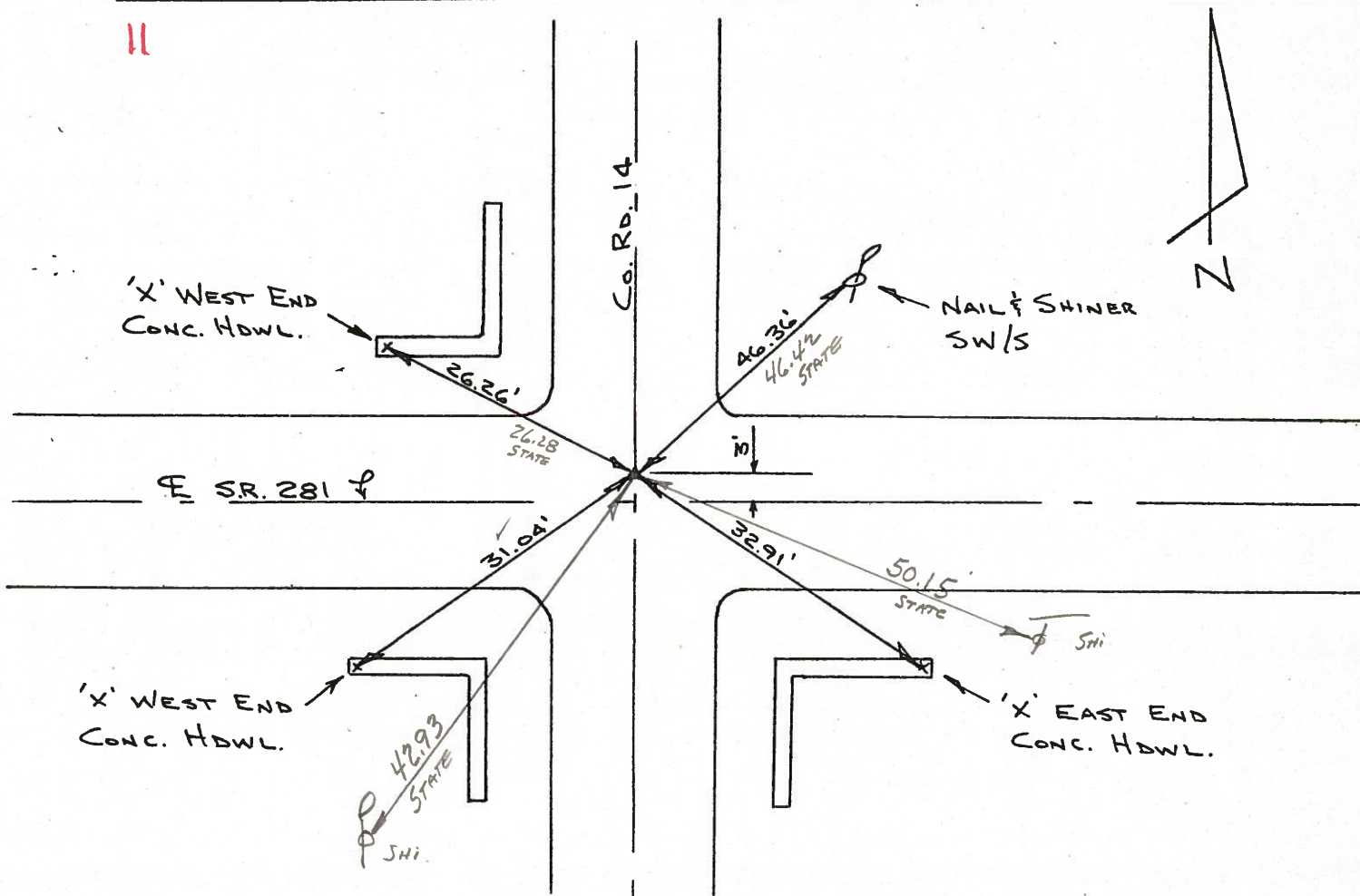
BB

SS

MS



11



FOUND R.R. SPK. OVER STONE. STONE IS  
13" DEEP. REPLACED CTR. PUNCHED R.R. SPK.  
OVER STONE. STONE IS 3' NORTH OF E SR. 281.  
P.K.'S 6' N. & 6' W.

SET P.K. NAIL  
8-11-77

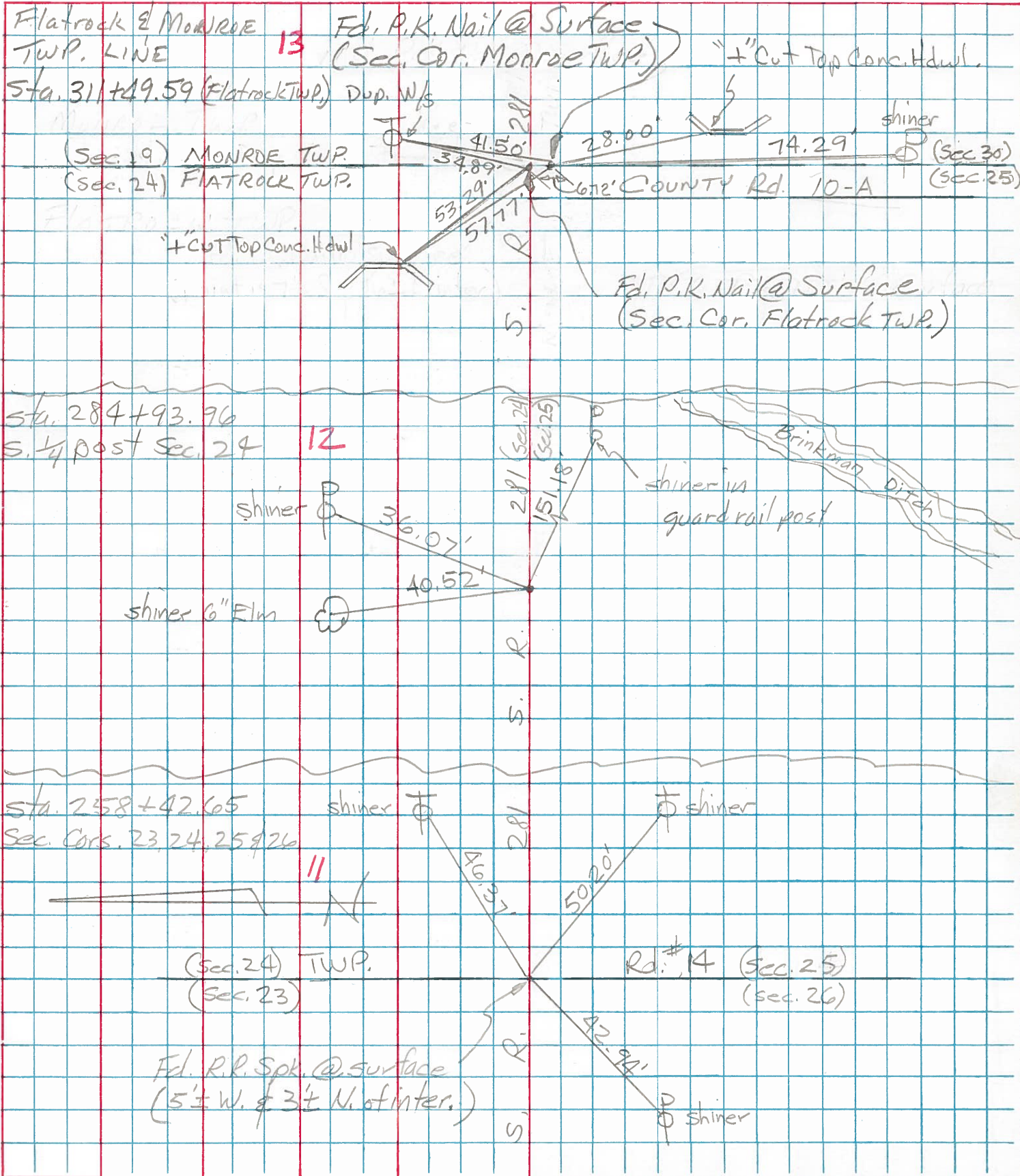
Copied:

Printed:



PERSONNEL	TITLE	PERSONNEL	TITLE	COUNTY	DATE
Tomsic				HENRY	Nov. 8, 1974
Neuser				S. R. 281	WEATHER
Vandy				SEC. Flatrock TWP	TEMP.
Granata					

DESCRIPTION	LEFT	CENTER LINE	RIGHT	JOB NO.
-------------	------	-------------	-------	---------





PERSONNEL TITLE PERSONNEL TITLE

COUNTY Henry DATE 11-29-57

S. R. # 281 WEATHER 10-24-60

SEC. "H" TEMP.

DESCRIPTION Points #11 Thru #30 Replaced by Knape JOB NO.

	LEFT	CENTER LINE	RIGHT
#11	<p>1/4 Sec COR. Sta. 232+26 Stone 4" under Surface R.R. Spk. - 1' N. of S. Edge Part 5/11/64</p>	(10)	<p>70.72 N.E. To Shiner T. Pole 45.0' N. To Iron Pin on fence line 41.85' N.W. To Iron Gas pipe 1" 43.83' S. To Shiner in W. Side 22" 43.00 Twin oak 42.96 43.67' S.E. To Shiner in W. Side 79.71, 79.26' 20" oak 79.32 S.S.E. To Shiner in 16" oak 79.63' N.W. To Shiner T. Pole. 73.63'</p>
#12	<p>Co. Rd. #14 S.E. COR. Sec. 23 Sta. 258+42.65 Stone 3" under Surface Ed. R.R. Hail R.R. Spk. 5/11/64</p>	(11)	<p>31.80' N.E. To ⊗ Wingwall 32.85' S.E. To ⊗ Wingwall } Plumber 26.25' N.W. To ⊗ Wingwall 30.94' S.W. To ⊗ Wingwall 31.03</p>
#12A	<p>5/4 Post Sec. 24 Sta. 284+93.96 R.R. Spk. 5/11/64</p>	(12)	<p>36.17' N.E. To Shiner in P. Pole Plumbed 37.80' S.E. To Ctr. Top Rim 12" C.M.P. E. end Plumbed 27.10' S.W. To Ctr. Top Rim 12" C.M.P. W. end 20.79' S. To spk. in N. side 34" 29.93 N. To + Top Ctr. W. end C.M.P. Estm. DE. Pipe.</p>
#13	<p>Intersection S.R. #108 &amp; 281 Iron Pin 5/11/64</p>	(12A)	<p>112.71' N.E. To spk. P. Pole 57.39 51.55' N.W. To spk. T. Pole Plum 99.67 53.70' S.E. To spk. P. Pole 90.90 40.00' S.W. To spk. T. Pole .87</p>