

O.D.O.T. DISTRICT 2 SURVEY OFFICE (USE ONLY)

PERSONNEL

REFERENCE NO. 12 A

SHEET 17 OF 20

NOTES CANTERBURY

DATE 5-19-98

ROUTE SR 281

H.C. ROUSOS

WEATHER SUNNY

COUNTY HENRY

R.C. HUSS

TEMP. +80°

TOWNSHIP FLAT ROCK

DWG BY JAMES PID 102763

SECTION 25

T 4 N R 6 E

TYPE MONUMENT P.K./WASHER

ON SURFACE - ~~BELOW~~ ON

OFFSET ☉ PAVEMENT ON, 15.4' SR 108 LT : RT

- TO - EDGE PAVEMENT

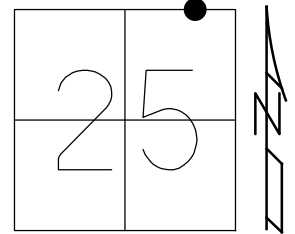
STATION: 301+48.8

HORIZ.DATUM: NAD83 2011

GEOID: NAVD88 2012A

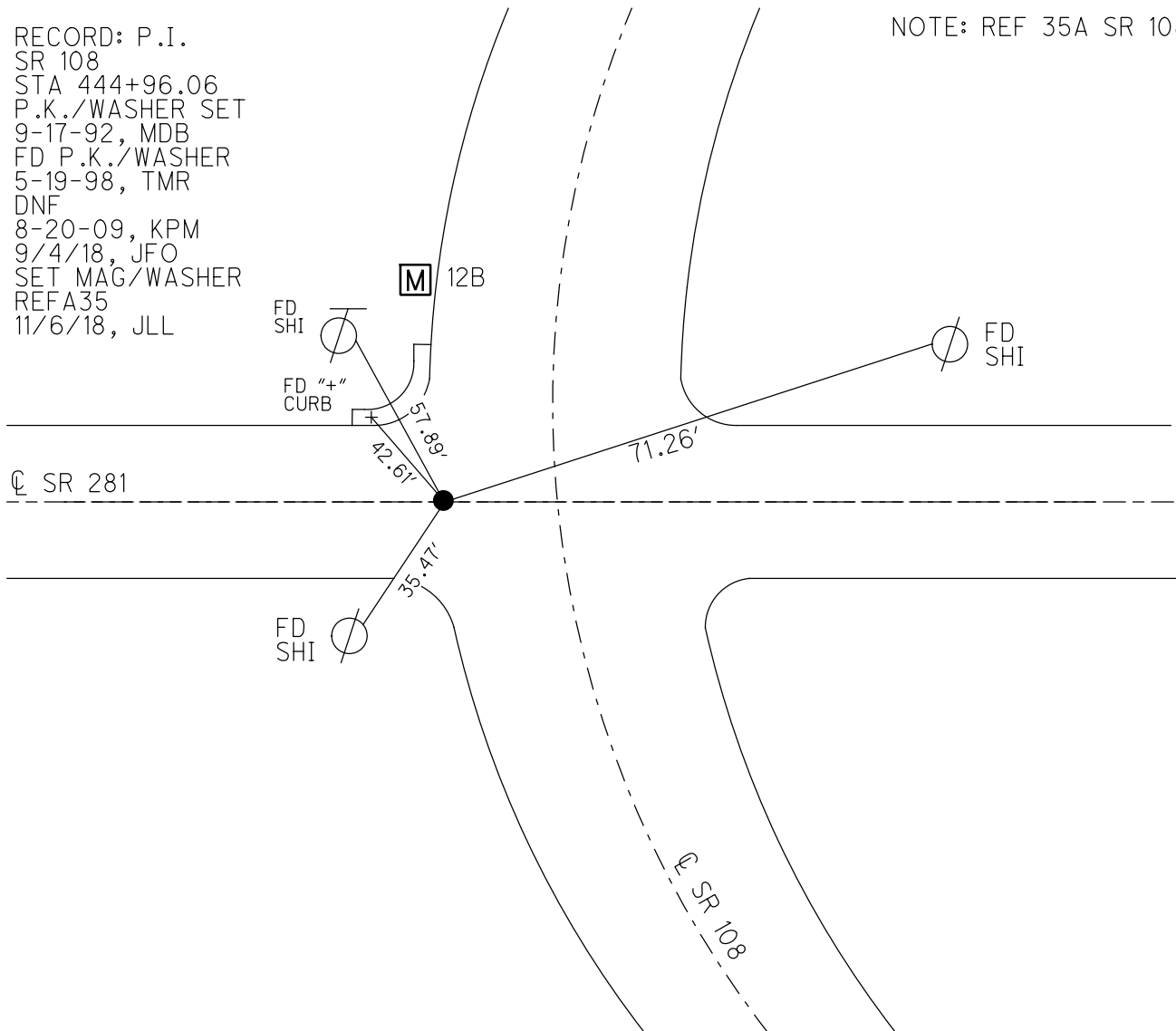
GRID: NORTHING: 592911.473

EASTING: 1523949.701



RECORD: P.I.
 SR 108
 STA 444+96.06
 P.K./WASHER SET
 9-17-92, MDB
 FD P.K./WASHER
 5-19-98, TMR
 DNF
 8-20-09, KPM
 9/4/18, JFO
 SET MAG/WASHER
 REFA35
 11/6/18, JLL

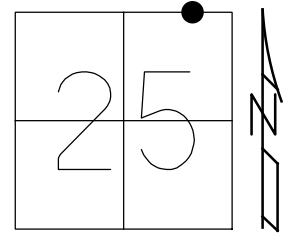
NOTE: REF 35A SR 108



O.D.O.T. DISTRICT 2 SURVEY OFFICE (USE ONLY)

PERSONNEL _____ REFERENCE NO. 12 A SHEET 17 OF 20
 NOTES CANTERBURY DATE 5-19-98 ROUTE SR 281
 H.C. ROUSOS WEATHER SUNNY COUNTY HENRY
 R.C. HUSS TEMP. +80° TOWNSHIP FLAT ROCK
 _____ SECTION 25
 DWG BY JAMES PID 102763 T 4 N R 6 E

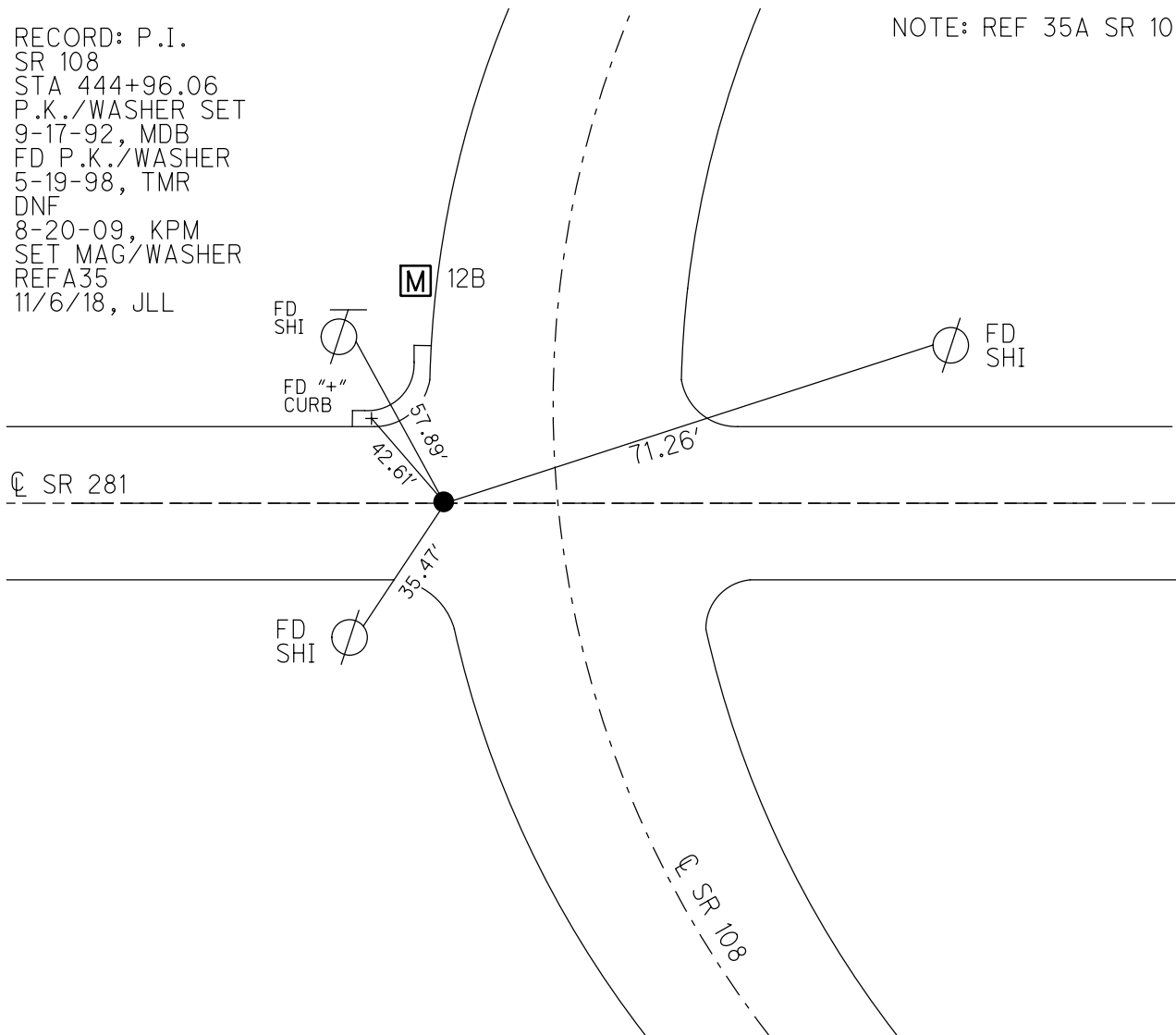
TYPE MONUMENT P.K./WASHER
 ON SURFACE - ~~BELOW~~ ON
 OFFSET ☉ PAVEMENT ON, 15.4' SR 108 LT : RT
- TO - EDGE PAVEMENT
 STATION: 301+48.8



HORZ.DATUM: NAD83 2011 GEOID: NAVD88 2012A
 GRID: NORTHING: 592911.473 EASTING: 1523949.701

RECORD: P.I.
 SR 108
 STA 444+96.06
 P.K./WASHER SET
 9-17-92, MDB
 FD P.K./WASHER
 5-19-98, TMR
 DNF
 8-20-09, KPM
 SET MAG/WASHER
 REFA35
 11/6/18, JLL

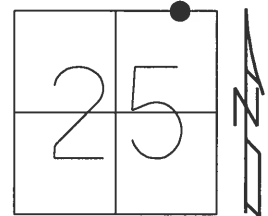
NOTE: REF 35A SR 108



O.D.O.T. DISTRICT 2 SURVEY OFFICE (USE ONLY)

PERSONNEL _____ REFERENCE NO. 12 A SHEET 17 OF 20
 NOTES CANTERBURY DATE 5-19-98 ROUTE SR 281
 H.C. ROUSOS WEATHER SUNNY COUNTY HENRY
 R.C. HUSS TEMP. +80° TOWNSHIP FLAT ROCK
 SECTION 25
 DWG BY JAMES PID 102763 T 4 N R 6 E

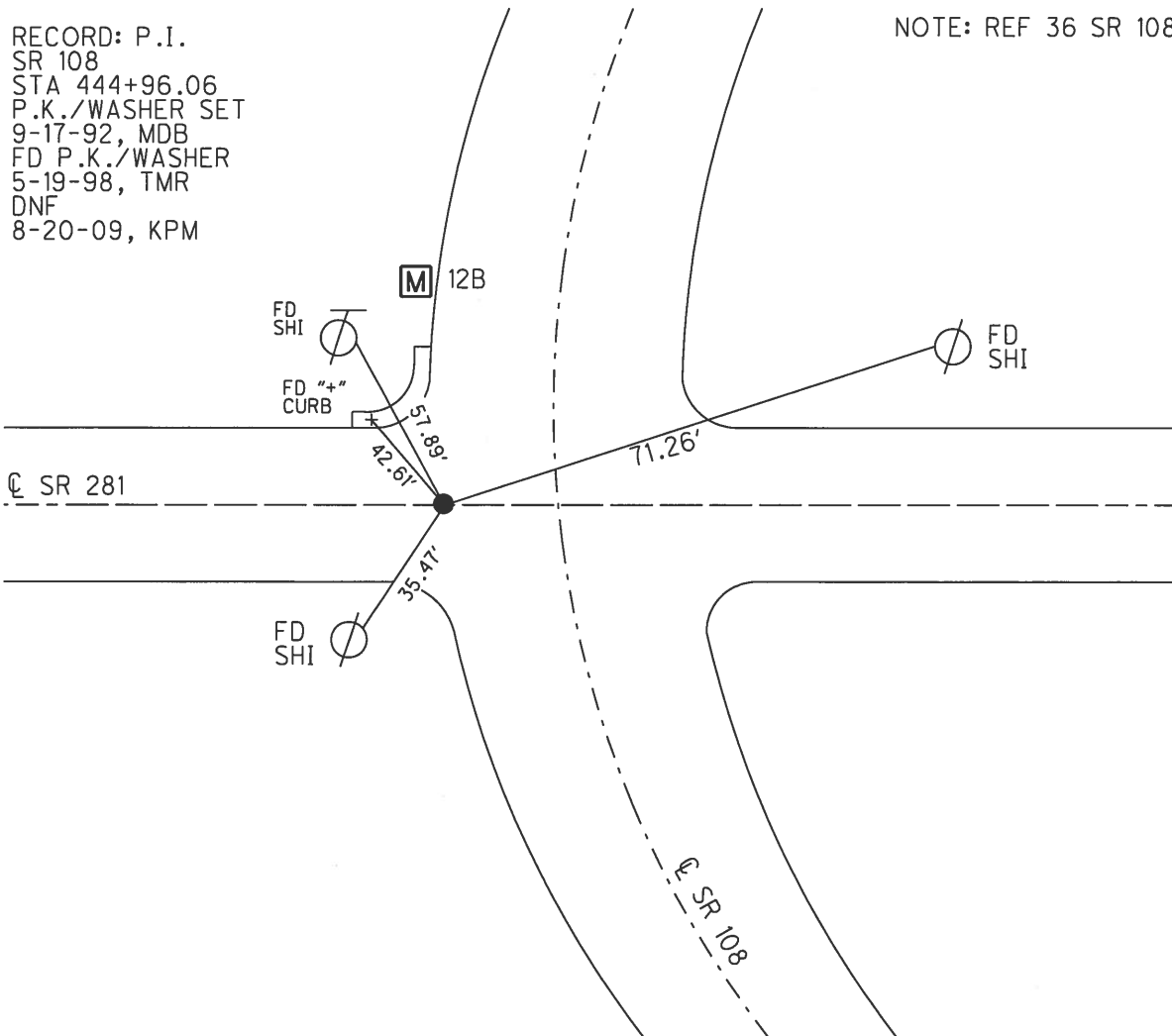
TYPE MONUMENT P.K./WASHER
 ON SURFACE - ~~BELOW~~ ON
 OFFSET ☉ PAVEMENT 15.4' SR 108 LT : RT
- TO - EDGE PAVEMENT
 STATION: 301+48.8



HORIZ. DATUM: _____ - _____ GEOID: _____ - _____
 GRID: NORTHING: _____ - _____ EASTING: _____ - _____

RECORD: P.I.
 SR 108
 STA 444+96.06
 P.K./WASHER SET
 9-17-92, MDB
 FD P.K./WASHER
 5-19-98, TMR
 DNF
 8-20-09, KPM

NOTE: REF 36 SR 108



O.D.O.T. DISTRICT 2 SURVEY OFFICE

PERSONNEL _____

REFERENCE NO. 36 ^(SR 108)
 12-A (SR 281) SHEET 40 OF 54

NOTES Canterbury

H.C. Rodson

R.C. Huss

DATE 5-19-98

WEATHER Sunny

TEMP. + 80°F

ROUTE 108+281

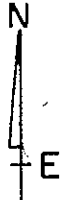
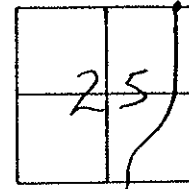
COUNTY Henry

TOWNSHIP Flatrock

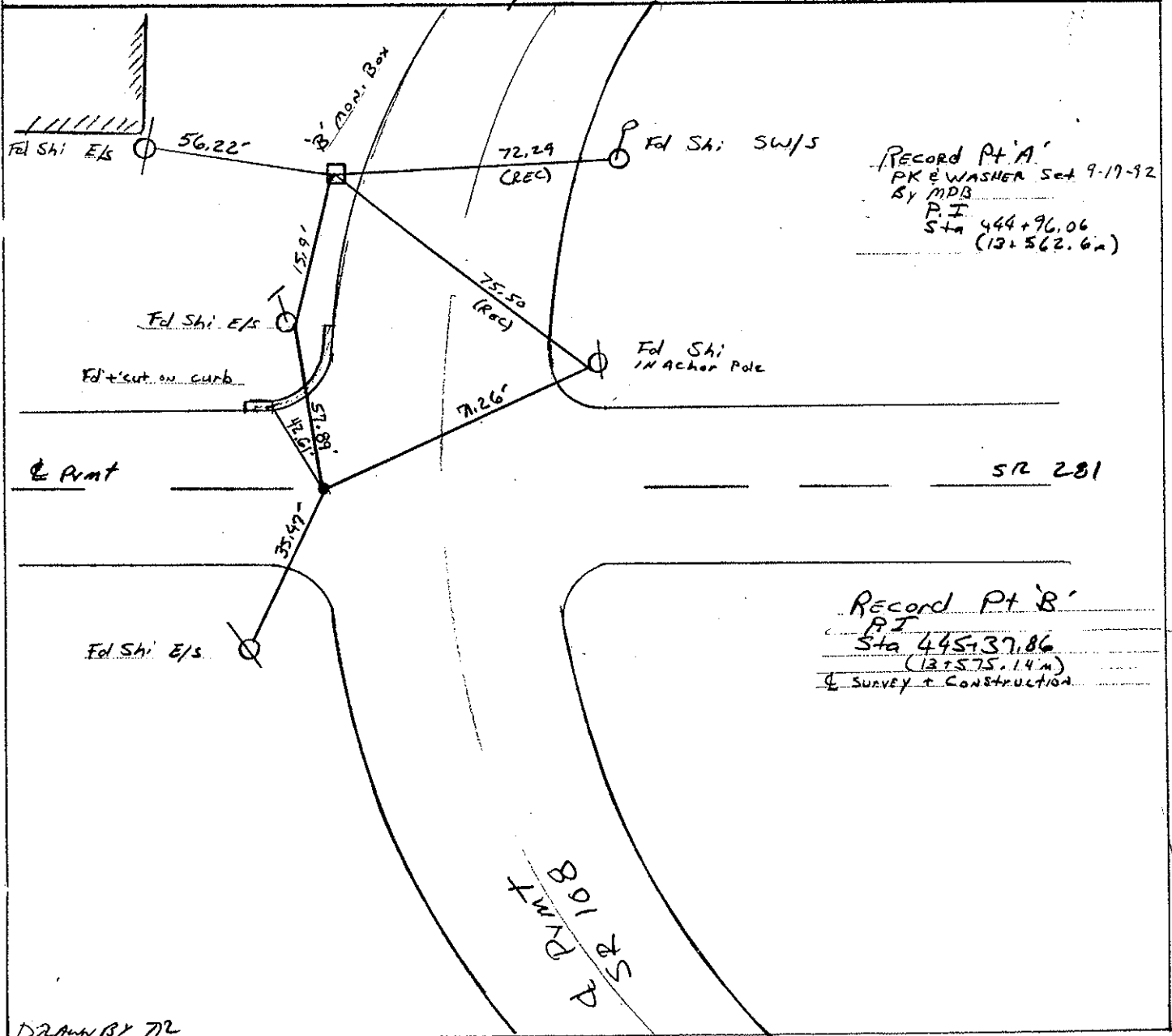
SECTION 25

T 4 N R 6 E

TYPE MONUMENT Pl 'A' - PK & Washer
Pl 'B' - Man Box
 ON SURFACE - ~~BELOW~~ Path on Surface
 LEFT - ~~PAV'T.~~ RIGHT 15.4' Lt of E SR 108
 TO EDGE PAVEMENT



S.L.M. 13+522.96 SR 108 sta / 9+184.15 se 281 sta



DRAWN BY 72

O.D.O.T. DISTRICT 2 SURVEY OFFICE

PERSONNEL

REFERENCE NO. 36

SHEET 40 OF 54

NOTES VAN DUSEN

H.C. KUSZ

DATE 8-18-02

ROUTE SR 108

R.C. BARNHISEL

WEATHER CLEAR

COUNTY HENRY

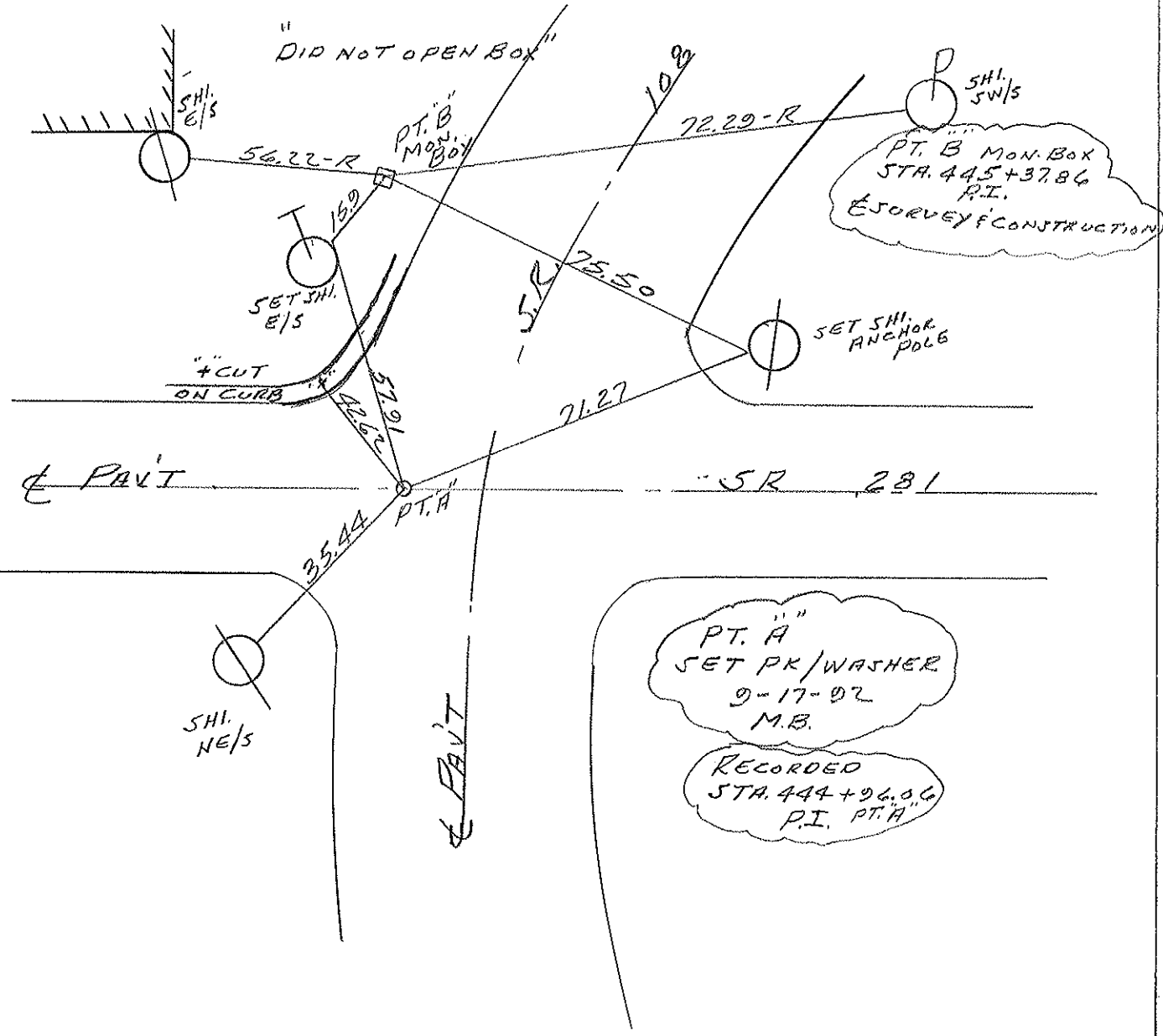
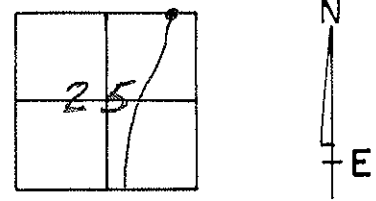
TEMP. +75° F

TOWNSHIP FLATROCK

SECTION 25

T. 4 N. R. 6 E

TYPE MONUMENT PT. A PK/WASHER
 ON SURFACE - BELOW YES
 LEFT - CL PAV'T. - RIGHT 15.4 PT. A
 TO EDGE PAVEMENT
 S.L.M. 443+66 PT. A



PERSONNEL TITLE PERSONNEL TITLE

COUNTY Henry DATE 11-29-57

S. R. # 281 WEATHER 10-24-60

SEC. "H" TEMP.

DESCRIPTION Points #11 Thru #30 Relaced by Knape JOB NO.

LEFT CENTER LINE RIGHT

<p>#11</p> <p>1/4 Sec COR.</p> <p>Sta. 232+26</p> <p>Stone 4" under Surface</p> <p>R.R. Spk. - 1' N. of S. Edge Part</p> <p>5/11/64</p>	<p>(10)</p>	<p>70.72 N.E. To Shiner T. Pole</p> <p>45.0' N. To Iron Pin on fence lin</p> <p>41.85' N.W. To Iron Gas pipe 1"</p> <p>43.83' S. To Shiner in W. Side 22" Twin oak</p> <p>43.60</p> <p>42.96 43.07' S.E. To Shiner in W. Side 20" oak</p> <p>79.71, 79.26'</p> <p>79.32' S.S.E. To Shiner in 16" oak</p> <p>79.63' N.W. To Shiner T. Pole.</p> <p>73.63'</p>
<p>#12</p> <p>Co. Rd. #14</p> <p>S.E. COR. Sec. 23</p> <p>Sta. 258+42.65</p> <p>Stone 3' under Surface</p> <p>R.R. Spk. 5/11/64</p>	<p>(11)</p>	<p>31.80' N.E. To ⊗ Wingwall</p> <p>32.85' S.E. To ⊗ Wingwall } Plumber</p> <p>26.25' N.W. To ⊗ Wingwall</p> <p>30.94' S.W. To ⊗ Wingwall</p> <p>31.03</p>
<p>#12A</p> <p>5/4 Post Sec. 24</p> <p>Sta. 284+93.96</p> <p>R.R. Spk.</p> <p>5/11/64</p>	<p>(12)</p>	<p>36.17, 36.10' N.E. To Shiner in P. Pole</p> <p>Plumbed 37.86' S.E. To Ctr. Top Rim 12" C.M.P. E. end</p> <p>Plumbed 27.12' S.W. To ctr. Top Rim 12" C.M.P. W. end</p> <p>20.79' S. To spk. in N. side 36"</p> <p>29.93 N. To + Top ctr. W. end C.M.P. E. end De. pipe.</p>
<p>#13</p> <p>Intersection S.R. #108 & 281</p> <p>Iron Pin</p> <p>5/11/64</p>	<p>(12A)</p>	<p>112.71, 60.19' N.E. To spk. P. Pole</p> <p>57.39 51.55' N.W. To spk. T. Pole</p> <p>Plum 99.67 53.70' S.E. To spk. P. Pole</p> <p>90.90 40.00' S.W. To spk. T. Pole</p> <p>.87</p>