

O.D.O.T. DISTRICT 2 SURVEY OFFICE (USE ONLY)

PERSONNEL

REFERENCE NO. 12 B

SHEET 18 OF 20

NOTES CANTERBURY

DATE 5-19-98

ROUTE SR 281

H.C. ROUSOS

WEATHER SUNNY

COUNTY HENRY

R.C. HUSS

TEMP. +80°

TOWNSHIP FLAT ROCK

SECTION 25

DWG BY JAMES PID 102763

T 4 N R 6 E

TYPE MONUMENT MONBOX

ON SURFACE - ~~BELOW~~ ON

OFFSET \odot PAVEMENT - LT : RT

 TO EDGE PAVEMENT

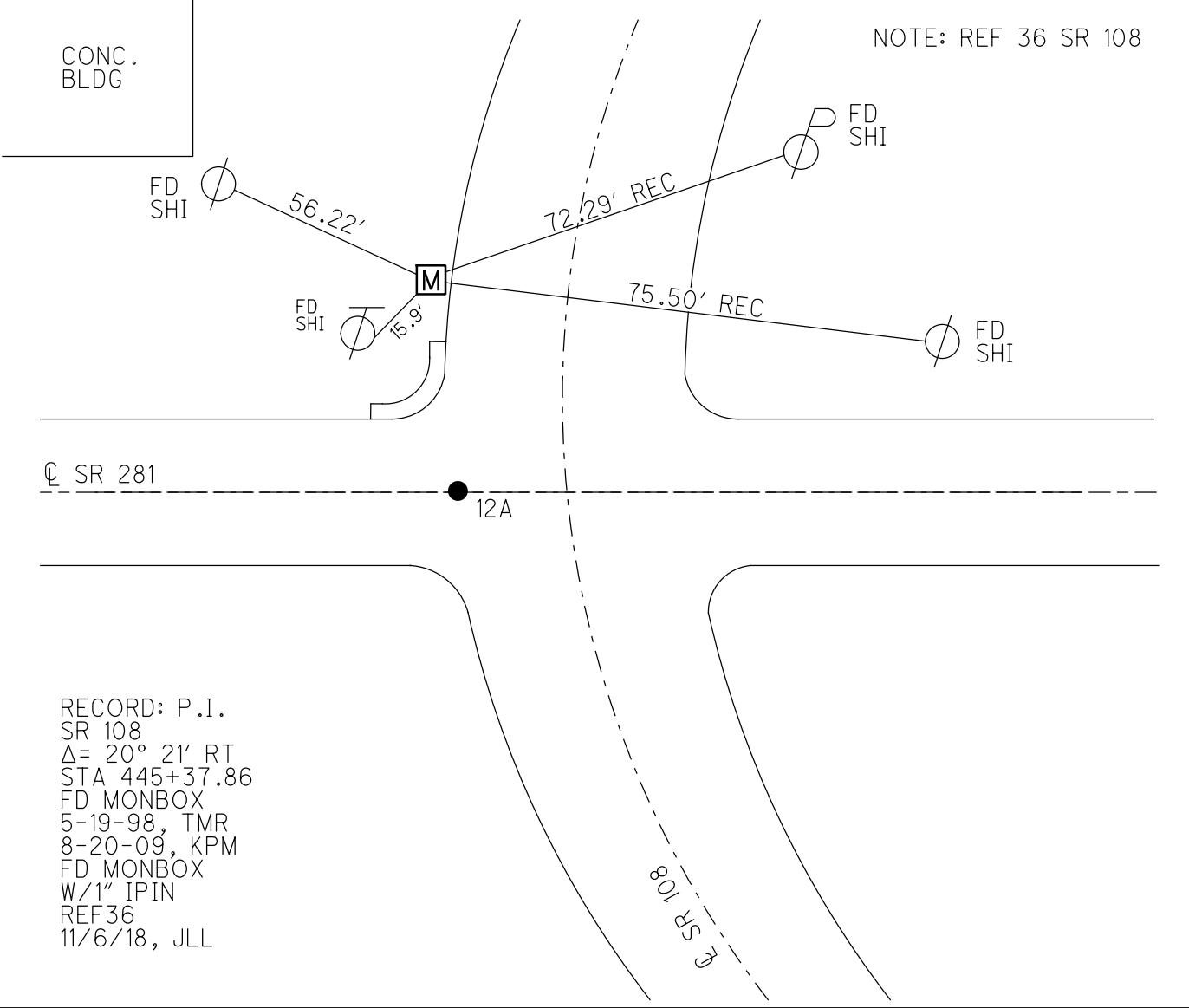
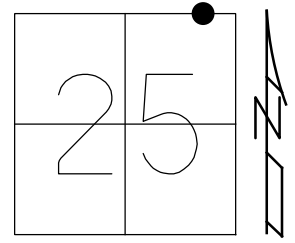
STATION: 301+48.8

HORZ. DATUM: NAD83 2011

GEOID: NAVD88 2012A

GRID: NORTHING: 592978.643

EASTING: 1523934.676



RECORD: P.I.
 SR 108
 $\Delta = 20^\circ 21' RT$
 STA 445+37.86
 FD MONBOX
 5-19-98, TMR
 8-20-09, KPM
 FD MONBOX
 W/1" IPIN
 REF36
 11/6/18, JLL

O.D.O.T. DISTRICT 2 SURVEY OFFICE (USE ONLY)

PERSONNEL

REFERENCE NO. 12 B

SHEET 18 OF 20

NOTES CANTERBURY

DATE 5-19-98

ROUTE SR 281

H.C. ROUSOS

WEATHER SUNNY

COUNTY HENRY

R.C. HUSS

TEMP. +80°

TOWNSHIP FLAT ROCK

SECTION 25

DWG BY JAMES PID 102763

T 4 N R 6 E

TYPE MONUMENT MONBOX

ON SURFACE - ~~BELOW~~ ON

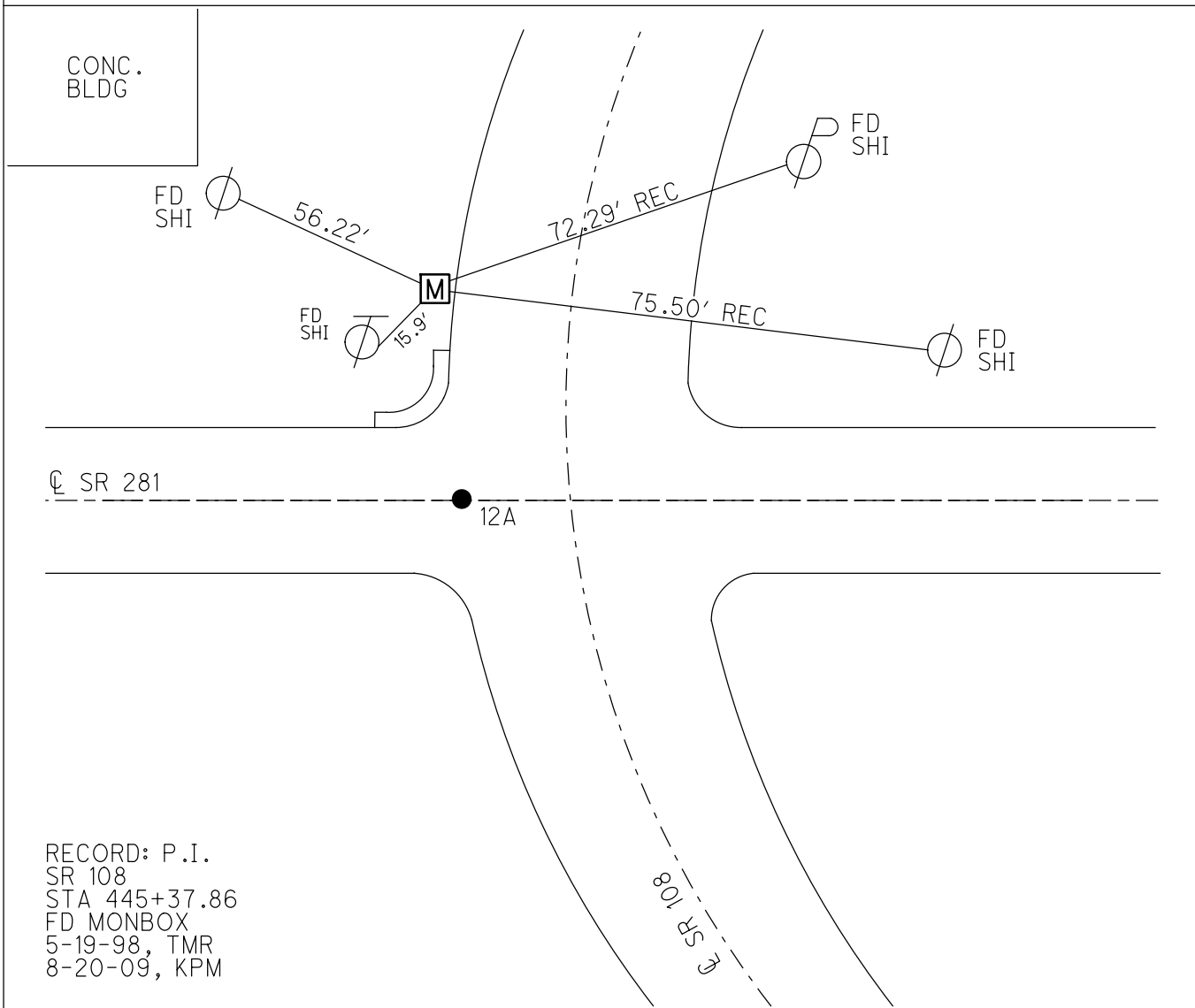
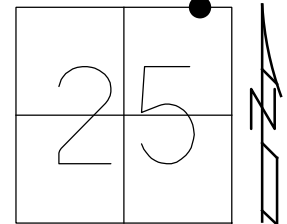
OFFSET \odot PAVEMENT - LT : RT

- TO EDGE PAVEMENT

STATION: 301+48.8

HORZ.DATUM: GEOID:

GRID: NORTHING: EASTING:



RECORD: P.I.
 SR 108
 STA 445+37.86
 FD MONBOX
 5-19-98, TMR
 8-20-09, KPM

O.D.O.T. DISTRICT 2 SURVEY OFFICE

PERSONNEL _____

REFERENCE NO. 36 ^(SR 108)
12-A (SR 281)

SHEET 40 OF 54

NOTES Canterbury

H.C. Rodson

R.C. Huss

DATE 5-19-98

WEATHER Sunny

TEMP. + 80°F

ROUTE 108+281

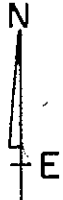
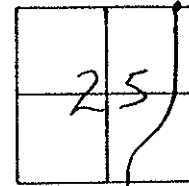
COUNTY Henry

TOWNSHIP Flatrock

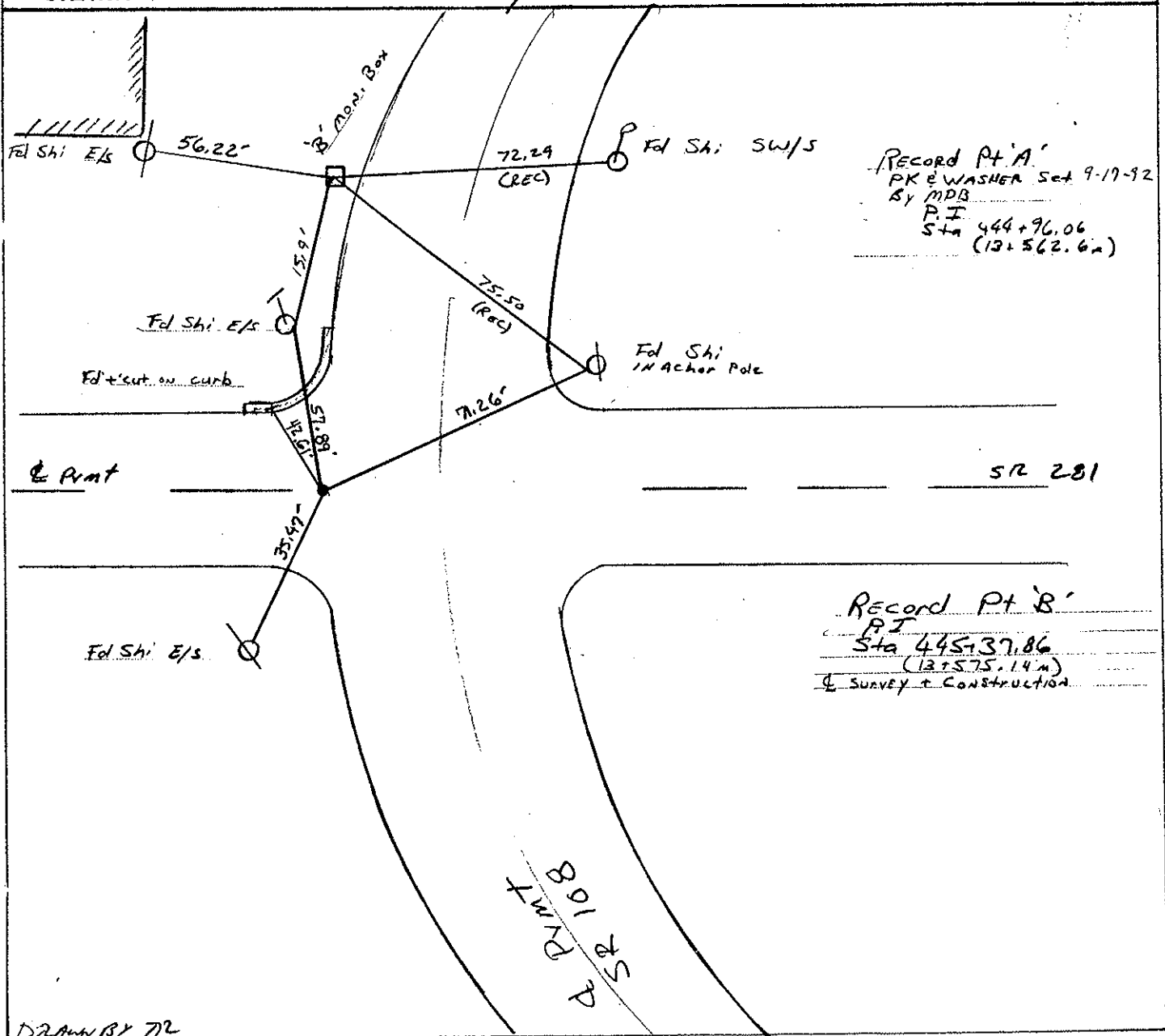
SECTION 25

T 4 N R 6 E

TYPE MONUMENT Pl A - PK & Washer
Pl B - Man Box
 ON SURFACE - ~~BELOW~~ Path on Surface
 LEFT - ~~PAV'T.~~ RIGHT 15.4' Lt of E SR 108
 TO EDGE PAVEMENT



S.L.M. 13+522.96 SR 108 sta / 9+184.15 se 281 sta



O.D.O.T. DISTRICT 2 SURVEY OFFICE

PERSONNEL

REFERENCE NO. 36

SHEET 40 OF 54

NOTES VAN DUSEN

H.C. KUSZ

R.C. BARNHISEL

DATE 8-18-02

WEATHER CLEAR

TEMP. +75° F

ROUTE SR 108

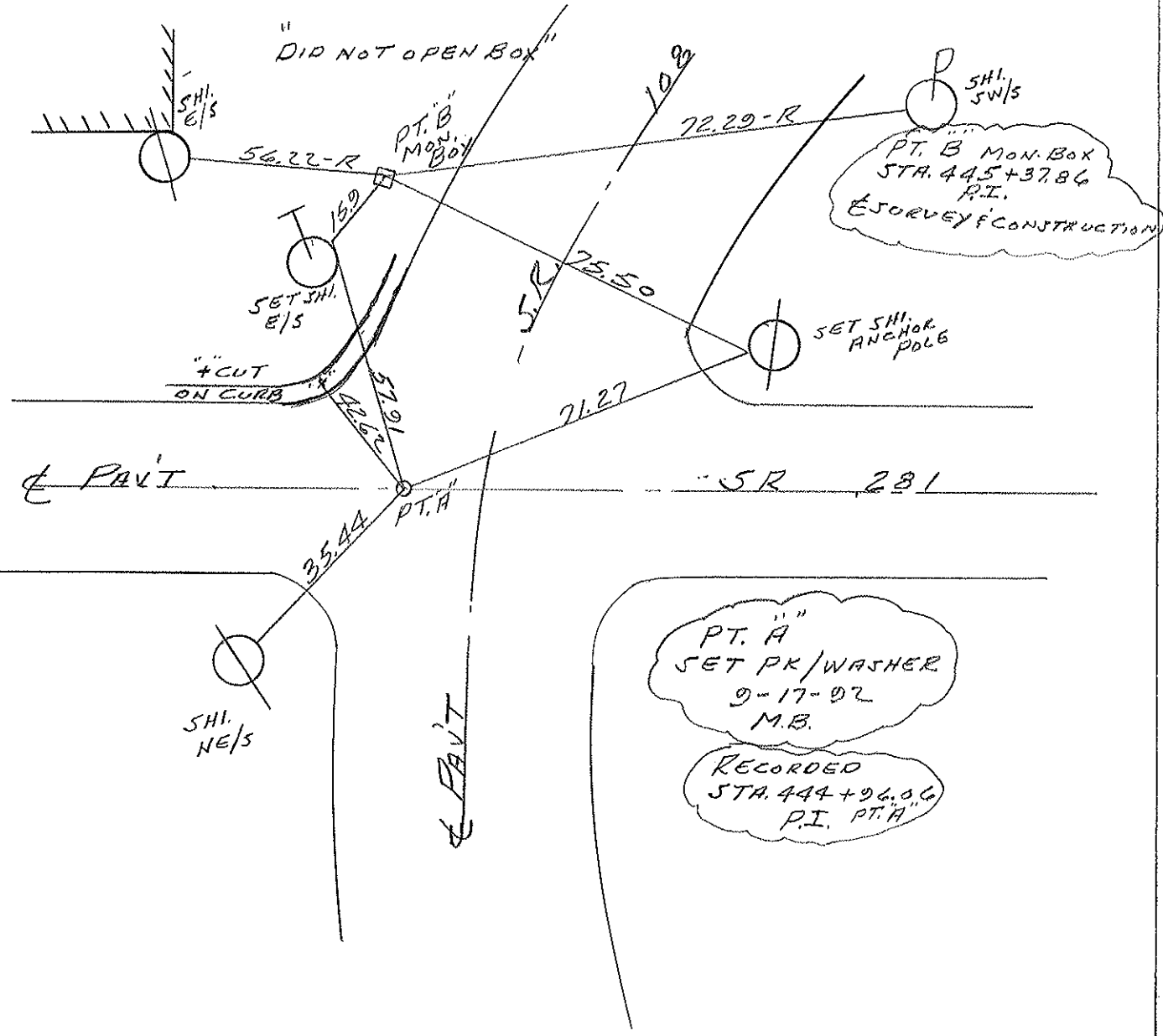
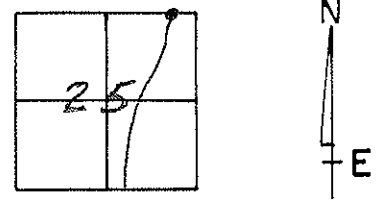
COUNTY HENRY

TOWNSHIP FLATROCK

SECTION 25

T4 N R 6 E

TYPE MONUMENT PT. A PK/WASHER
 ON SURFACE - BELOW YES
 LEFT-CL PAV'T. - RIGHT 15.4 PT. A
 TO EDGE PAVEMENT
 S.L.M. 443+66 PT. A



PT. A
 SET PK/WASHER
 9-17-02
 M.B.
 RECORDED
 STA. 444+96.06
 P.I. PT. A