

O.D.O.T. DISTRICT 2 SURVEY OFFICE (USE ONLY)

PERSONNEL

REFERENCE NO. 13

SHEET 19 OF 20

NOTES O'DONNELL

DATE 9/4/18

ROUTE SR 281

H.C. O'DONNELL

WEATHER SUNNY

COUNTY HENRY

R.C. MILLER

TEMP. 74°

TOWNSHIP FLATROCK

DWG BY JAMES

PID CHIP\_2

SECTION 25

T 4 N R 7 E

TYPE MONUMENT SM.R.R.SPIKE

~~ON SURFACE~~ - BELOW 2"

OFFSET Q PAVEMENT ON \_\_\_\_\_ LT : RT

10.4' TO LT EDGE PAVEMENT

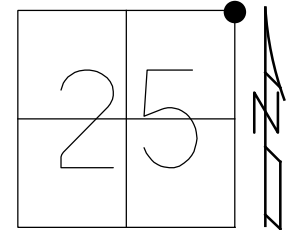
STATION: 311+54.80

HORZ.DATUM: NAD83 2011

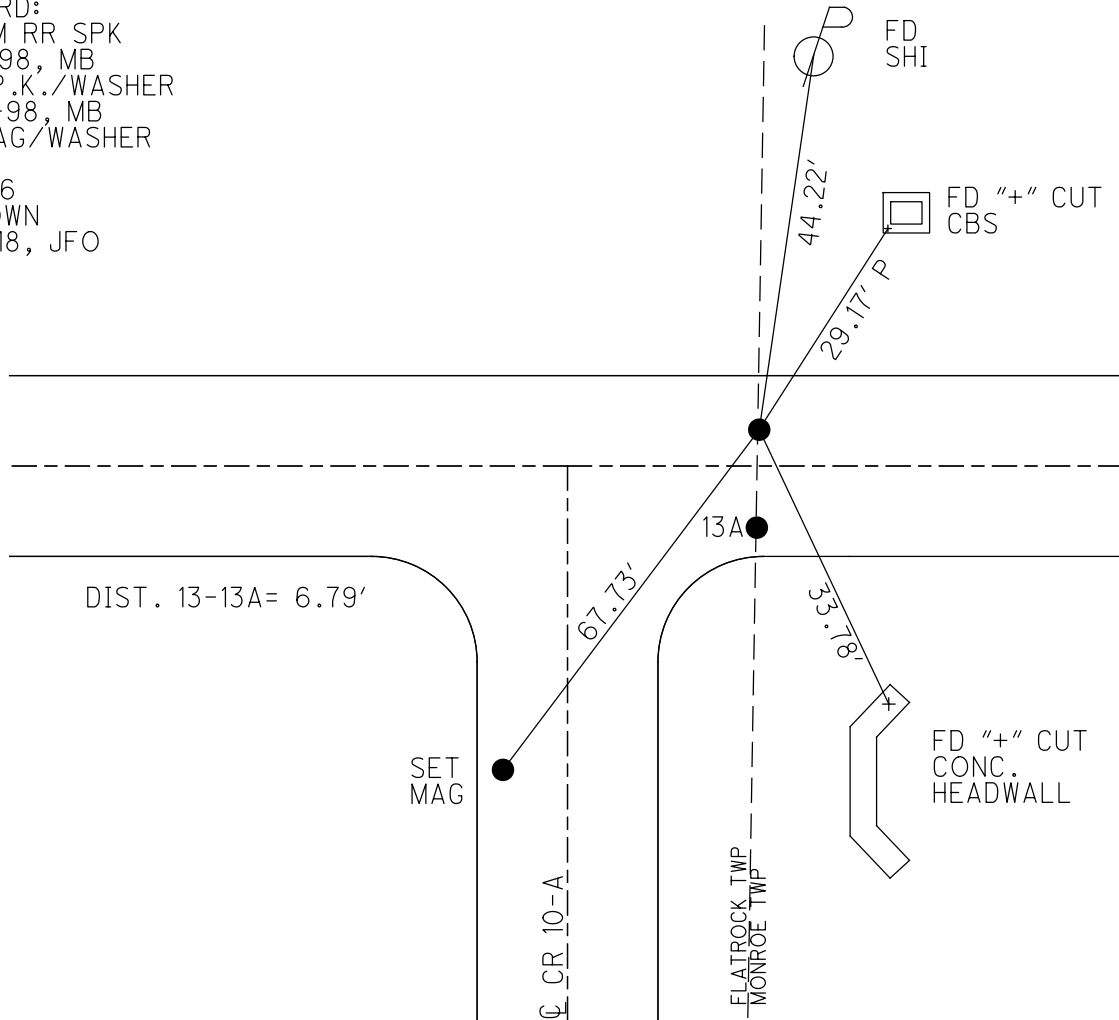
GEOID: NAVD88 2012A

GRID: NORTHING: 592909.261

EASTING: 1524915.154



RECORD:  
 FD SM RR SPK  
 8-18-98, MB  
 SET P.K./WASHER  
 9-28-98, MB  
 FD MAG/WASHER  
 REF13  
 11-2-16  
 2" DOWN  
 9/4/18, JFO



# O.D.O.T. DISTRICT 2 SURVEY OFFICE

PERSONNEL \_\_\_\_\_

REFERENCE NO. 13

SHEET 2 OF 34

NOTES Huss

H.C. Barnhiser

R.C. Rousos

DATE 8-18-98

WEATHER FAIR

TEMP. 82°

ROUTE SR 281

COUNTY Henry

TOWNSHIP Monroe

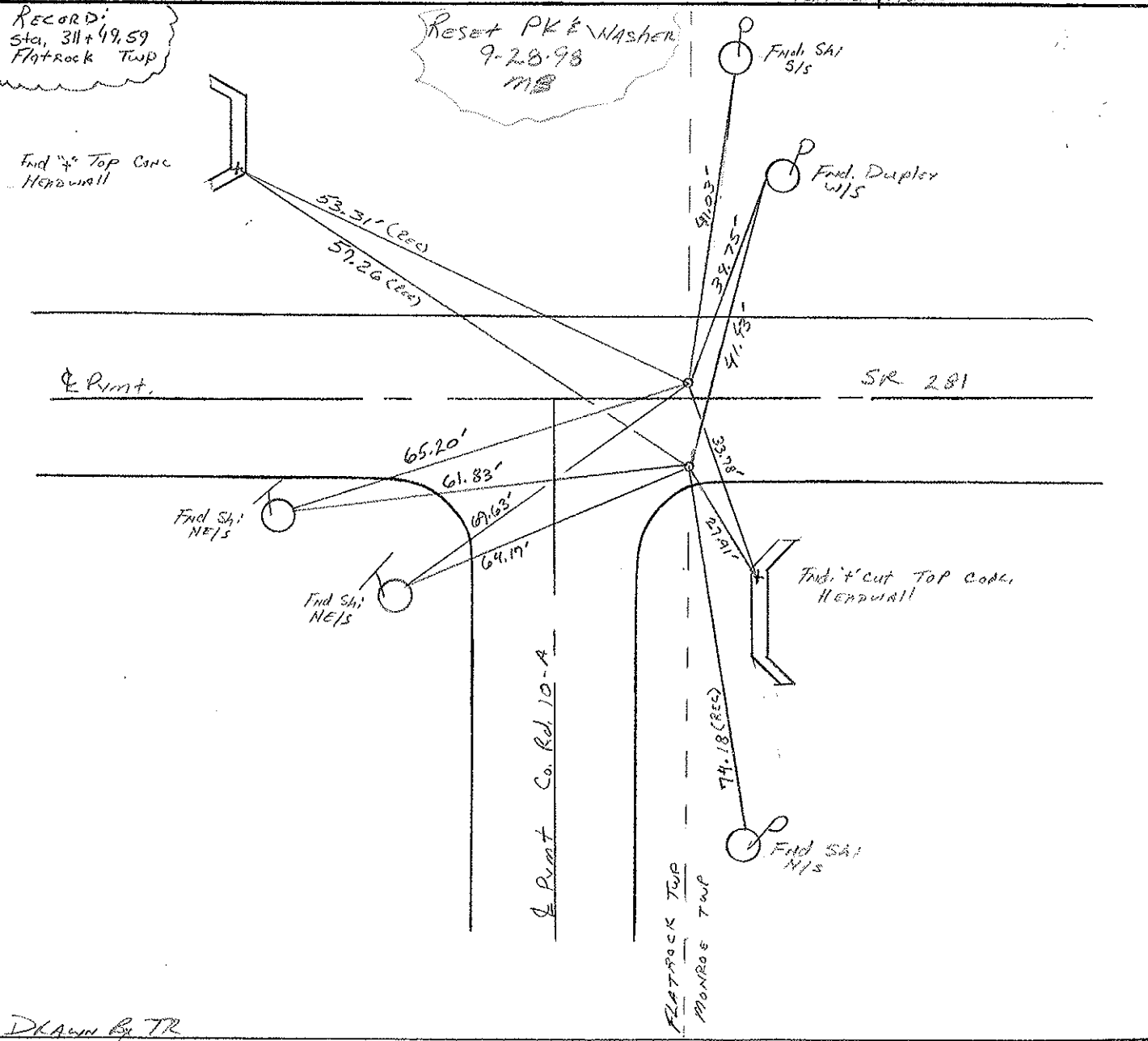
SECTION 19

T 4 N R 7 E

	A	B
TYPE MONUMENT	sm. cr. spk	sm. cr. spk
ON SURFACE - BELOW	surface	surface
LEFT- & PAV'T. - RIGHT	6.8' Rt	on & SR 281
TO	6.4'	
EDGE PAVEMENT		
S.L.M.	9+479.58 slk	(sta 311+18 slm)

24	19
25	30

FLATROCK MONROE



Drawn by TR

# O.D.O.T. DISTRICT 2 SURVEY OFFICE

PERSONNEL

REFERENCE NO. 13

SHEET 2 OF     

NOTES Sackman

H.C. BARNHISEL

R.C. LOEHRKE

DATE 8-12-87

WEATHER CLEAR

TEMP. +75

ROUTE SR 281

COUNTY HENRY

TOWNSHIP MONROE

SECTION 19

T4 N R 7 E

"A"  
TYPE MONUMENT P.K. (MONROE TWP)  
ON SURFACE - BELOW YES  
LEFT- $\epsilon$  PAV'T. - RIGHT 6.5' RT

"B"  
TYPE MONUMENT R.R. SOK (FLATROCK TWP)  
ON SURFACE - BELOW 1/2 Below  
LEFT- $\epsilon$  PAV'T. - RIGHT 0.5' Lt.

FLATROCK TWP	MONROE TWP
24	19
25	30

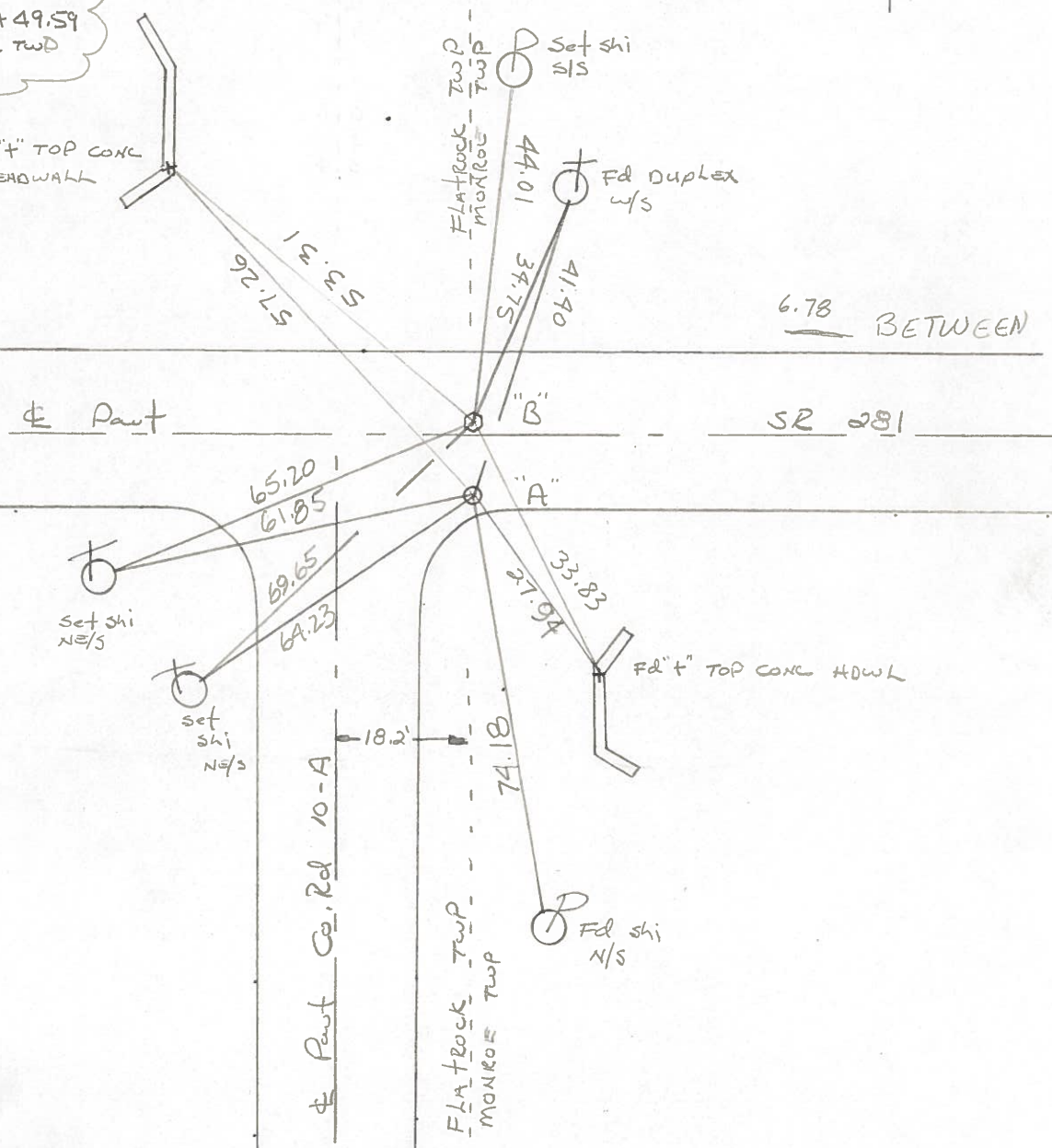


"A" 3.1 TO RT. EDGE PAVEMENT  
"B" 9.9 TO RT. EDGE PAVEMENT  
S.L.M. 311+18

Set small RR sok  
both points  
8-20-87 Sack

Record:  
Sta. 311+49.59  
Flatrock Twp

Fd "t" TOP CONC  
HEADWALL

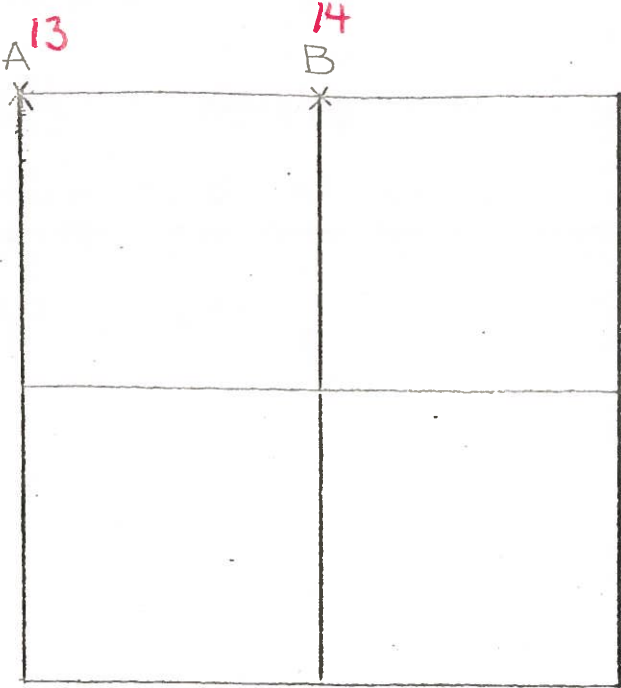


COUNTY HENRY S.R. 281

T-4-N, R-7-E

TOWNSHIP MOUROE

SECTION 30



6-22-79 R.W., J.J., G.M.

A - FOUND P.K. OVER BOAT SPIKE, OVER IRON BOLT, OVER CLAY TILE, OVER STONE (4" x 9" x 10") 18" BELOW ROAD SURFACE. P.K. WAS 0.03' SOUTH AND 0.14' WEST OF TOP CENTER OF STONE. REMOVED P.K., BOAT SPIKE, IRON BOLT AND CLAY TILE AND PLACED CENTER PUNCHED RAILROAD SPIKE ON SURFACE OVER

TOP CENTER OF STONE. P.K.'S 6' S. & W.

STONE IS 3.0' NORTH OF SOUTH EDGE OF 18' PAVEMENT

57.29' <sup>26'</sup> N.W. TO "+" TOP CONC. HEADWALL

41.37' <sup>43'</sup> N.N.E. TO DUPLEX <sup>W/S</sup> I

27.93' S.E. TO "+" TOP CONC. HEADWALL

6.70' N. TO N.E. COR. SEC. 25; PLATROCK TWP.

S. OF & PART S.R. 281 G.S.  
 FD. P.K. @ SURFACE  
 12-7-81 S.W.H.  
 40°

6-27-79 R.W., J.J., G.M.

B - FOUND P.K. OVER IRON BOLT 1.0' WEST OF HIGH POINT OF STONE (8" x 11" x 13") 18" BELOW ROAD SURFACE. REMOVED P.K. & IRON BOLT AND PLACED CENTER PUNCHED RAILROAD SPIKE ON SURFACE OVER HIGH POINT OF STONE. P.K.'S 6' N. & W.

STONE IS 2.2' NORTH OF SOUTH EDGE OF 18' PAVEMENT.

61.85' N.W. TO SHINER <sup>SE/S</sup> I

105.10' E.N.E. TO SHINER <sup>SW/S</sup> I

49.50' S. TO SHINER <sup>N/S</sup> 8" MULBERRY

FD. RR. S.P.K. 2" BELOW  
 7.5' S. OF E  
 3.0' N. OF S.E.P.  
 12-7-81 S.W.H.  
 40°

# HENRY COUNTY ENGINEER'S OFFICE CORNER STONE RECOVERY PROGRAM

Sht. 13 of 13  
SR. 281

TOWNSHIP FLATROCK

DATE 7-26-76

SECTION 25

WEATHER CLEAR & WARM

T4N, R6E

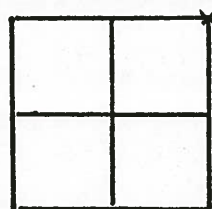
TEMP \_\_\_\_\_

PERSONNEL JG

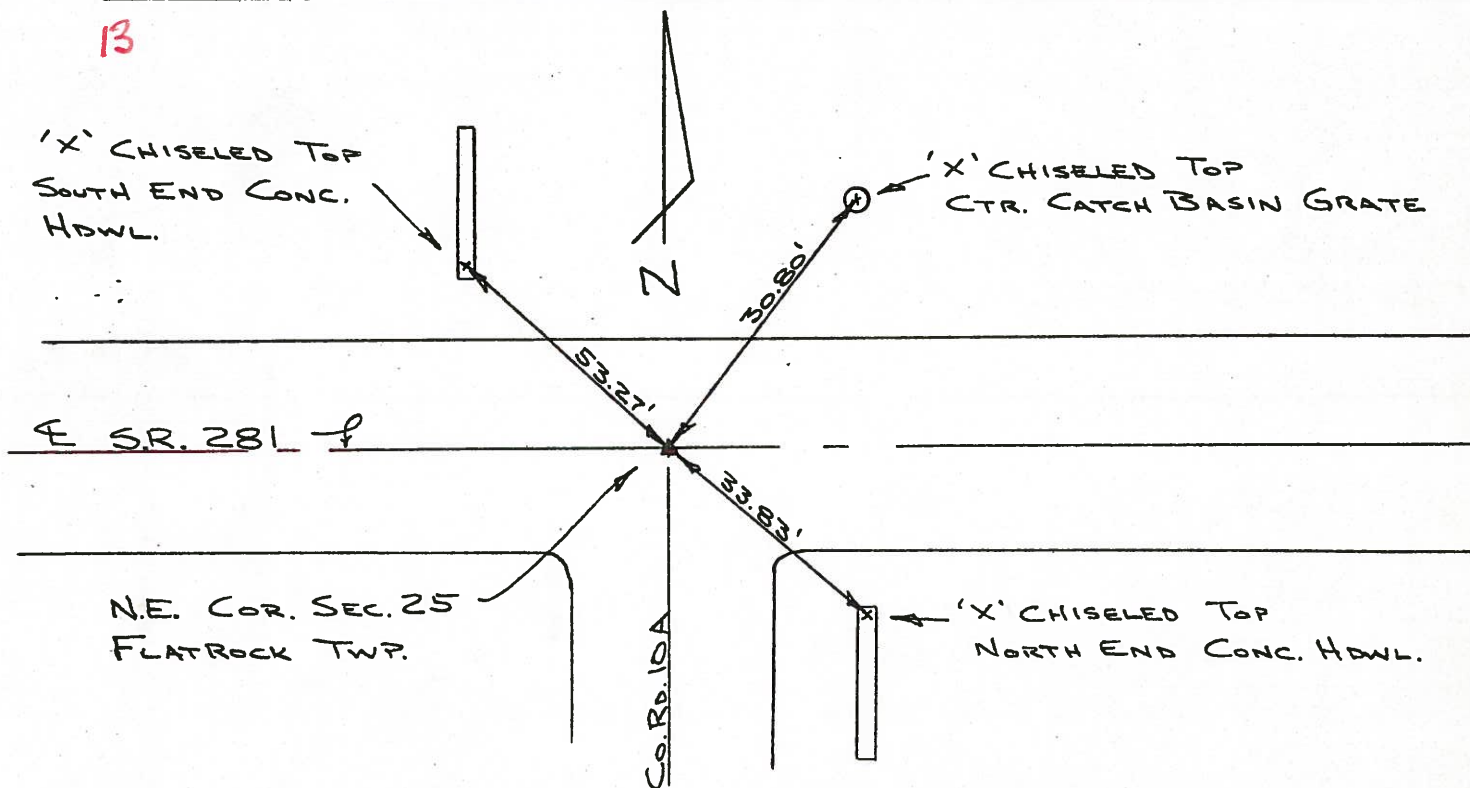
BB

MS

SS



**13**



FOUND P.K. & SHINER OVER BABY RR. SPK OVER 1/2" X 10 1/2" LONG BOLT OVER STONE. ALSO FOUND 4" VERTICLE TILE OVER STONE. BABY RR. SPK. WAS 3" DEEP & BOLT WAS 6" DEEP. STONE IS 15" DEEP. REMOVED BABY RR. SPK & BOLT, PLACED CTR. PUNCHED RR. SPK. OVER STONE. P.K.'S 6' N. & 6' W.

Copied:

Painted:



PERSONNEL TITLE PERSONNEL TITLE

Tomsic  
Newser  
Vandy  
Granata

COUNTY HENRY

DATE Nov. 8, 1974

S. R. 281

WEATHER

SEC. Flatrock TWP

TEMP.

DESCRIPTION

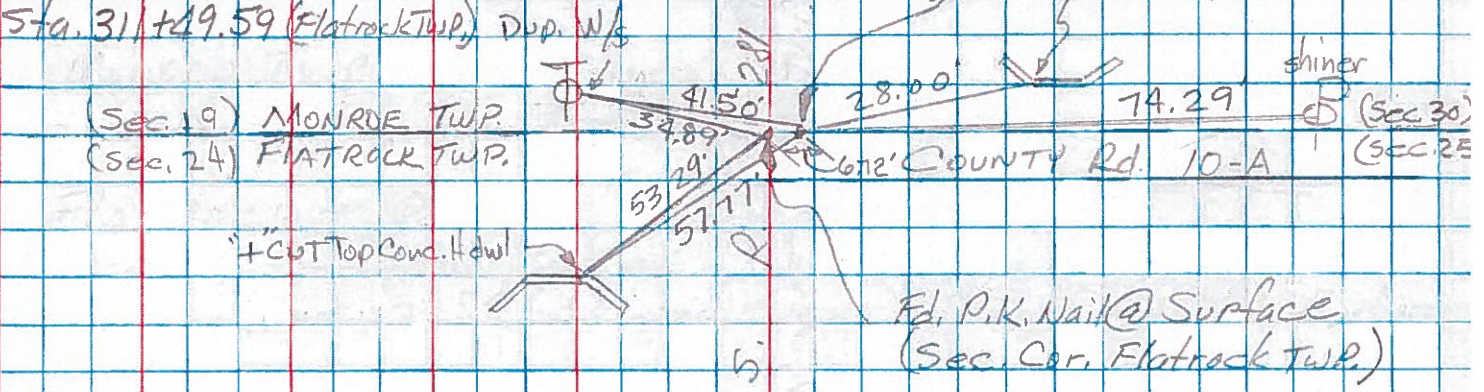
LEFT

CENTER LINE

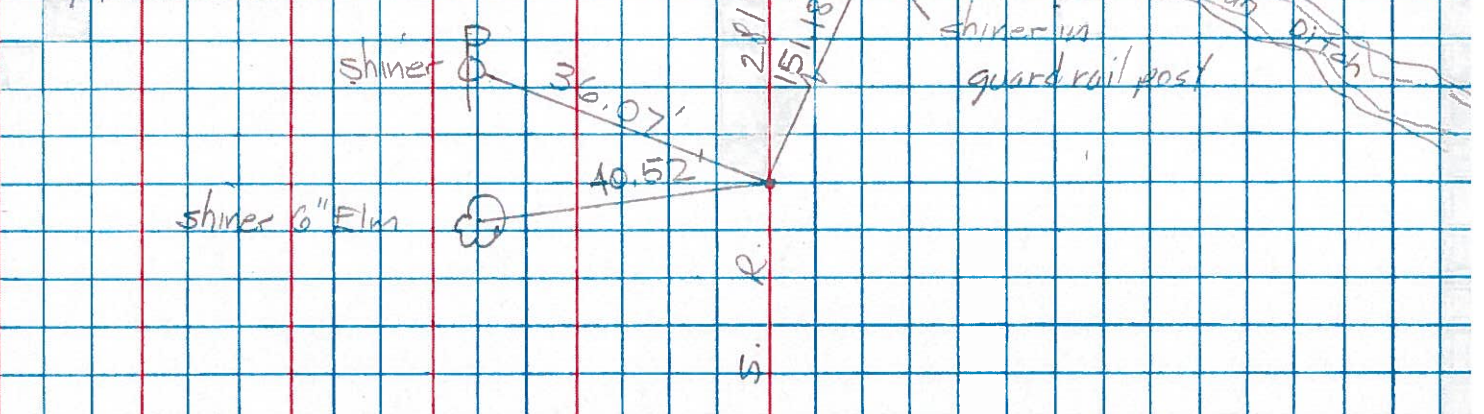
RIGHT

JOB NO.

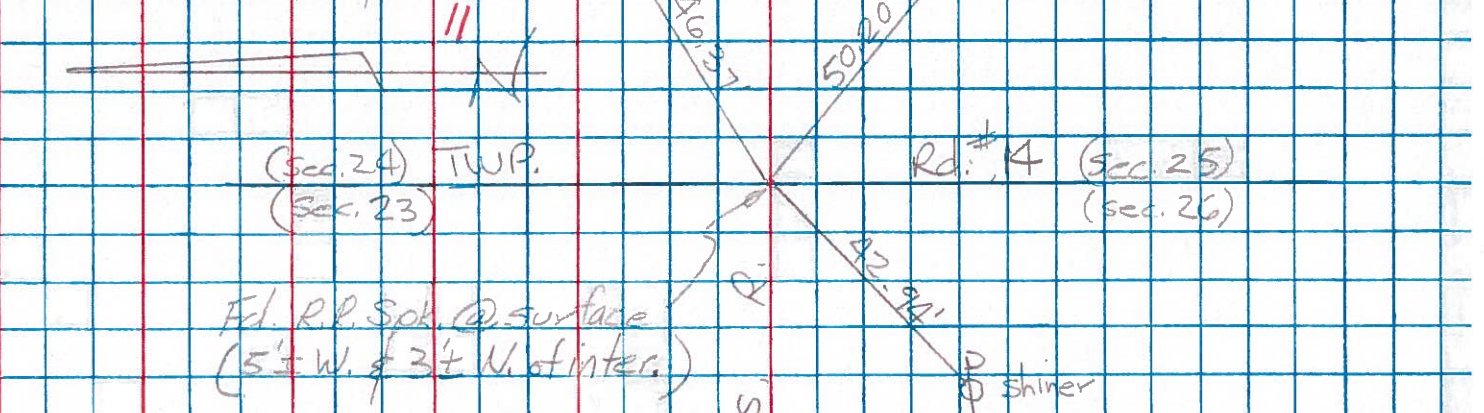
Flatrock & Monroe TWP. LINE 13  
Sta. 311+49.59 (Flatrock TWP) Dup. N/S  
Fd. P.K. Nail @ Surface (Sec. Cor. Monroe TWP.)  
"Cut Top Conc. Hdwl."



Sta. 284+93.96  
S. 1/4 Post Sec. 24 12



Sta. 258+42.65  
Sec. Cors. 23, 24, 25 & 26 11





PERSONNEL	TITLE	PERSONNEL	TITLE	COUNTY	DATE
				Henry	11-29-57
				#281	10-24-60
				"J"	

DESCRIPTION	LEFT	CENTER LINE	RIGHT	JOB NO.
-------------	------	-------------	-------	---------

#14	Sec. Cor. Sec #19 Stone (Iron Bolt) R.R. Spk. Monroe Twp	(13)	28.0' S.E. To chiseled $\otimes$ on Hdwl. 74.59' S. To R.R. Spk. in E. side P. Pole 57.19' N.W. To chiseled $\otimes$ on Hdwl. 39.52' Shi. in T. Pole N.	
#15	Sec. Cor. Sec #19 Stone (Iron Bolt) R.R. Spk. Flatrock Twp.	(13)	33.80' S.E. To chiseled $\otimes$ on Hdwl. 81.26' S. To R.R. Spk. in E. side. P. Pole 53.27' N.W. To chiseled $\otimes$ on Hdwl. 32.80' Shi. in T. Pole N	
#16	1/4-1/4 Cor. R.R. Spk. 80 Rds E. S.W. Cor. Sec. 19	(13-A)	99.93' N.E. To valve in T. Pole 67.05' N.W. To 60 $\pm$ spk. T. Pole 47.07' S. To Shi. 8" Walnut	
#17	1/4 Cor. Stone (Iron Bolt) (R.R. Spk)	(14)	58.15' 58.50' S.E. To 60 $\pm$ Spk. in W. side 105.95' N.E. To Shi. in T. Pole 10" Apple 41.60' S. To 1" Gas Pipe 50.00' N. To 1" Gas Pipe 61.06' N.W. To 60 $\pm$ Spk. in T. Pole	
#18	1/4-1/4 Cor. Stone (R.R. Spk) 80 Rds. W. S.E. Cor.	(14-A)	76.95' 77.00' S.E. To N.E. Cor. Conc. Corp. Crib. Foundation 73.80' 73.95' S. To N.W. Cor. Conc. Corp. Crib. Foundation 47.45' 47.53' N.W. To 60 $\pm$ Spk. W. side T. Pole 86.81 S.W. To Shi. P. Pole	
#19	S.E. Cor. Sec 19 R.R. Spk.	(15)	80.04' 80.42' 80.38' S.W. To 60 $\pm$ spk. in N. Side 20" oak 42.57 S.E. Shi. T.P. 71.44' S.W. To " " " S.E. " 12" Plum 46.02 S.W. Shi. P.P. 40.47' N.E. To " " " S.E. " 10" Elm 45.98 39.97' Shi. in T.P. N.E. 42.24' clump 48.80' + N.W. Top 60" conc. Pipe	
#20	1/4 1/4 Cor. Stone Did not find any Trace of iron bolt 4' x 11" (Set R.R. Spk)	(15-A)	96.50' N.E. To 60 $\pm$ spk in Tel. Pole 73.50' N.E. To Spk in 12" Pear 60.50' N.W. To 60 $\pm$ Spk. in Tel. Pole 83.52' S.E. Shiner P. Pole	