

O.D.O.T. DISTRICT 2 SURVEY OFFICE (USE ONLY)

PERSONNEL

REFERENCE NO. 13 A

SHEET 20 OF 20

NOTES O'DONNELL

DATE 9/4/18

ROUTE SR 281

H.C. O'DONNELL

WEATHER SUNNY

COUNTY HENRY

R.C. MILLER

TEMP. 74°

TOWNSHIP FLATROCK

SECTION 25

DWG BY JAMES PID CHIP\_2

T 4 N R 7 E

TYPE MONUMENT P.K.NAIL

ON SURFACE - ~~BELOW~~ ON

OFFSET 6.8' LT : RT

4.3' TO RT EDGE PAVEMENT

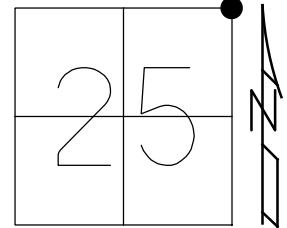
STATION: 311+54.55

HORZ.DATUM: NAD83 2011

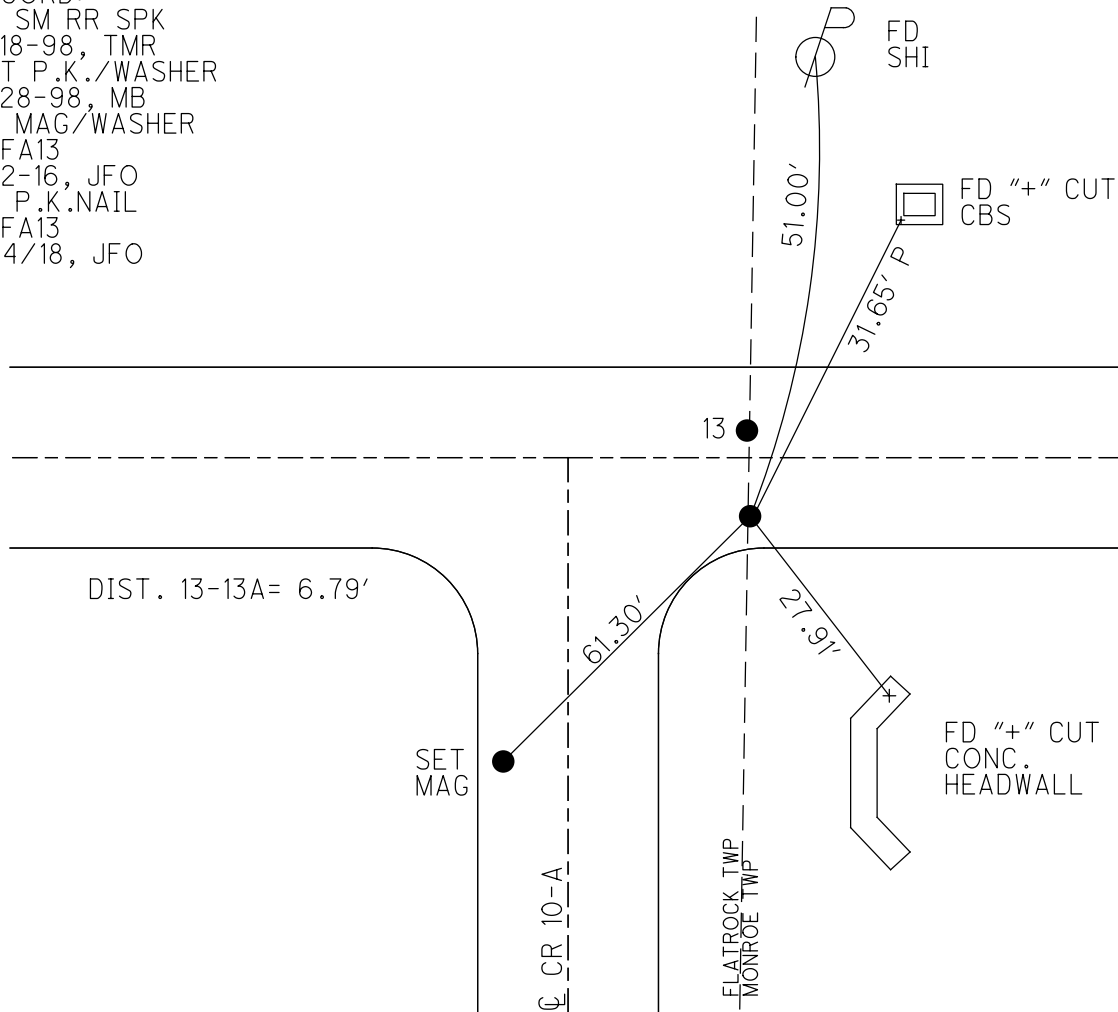
GEOID: NAVD88 2012A

GRID: NORTHING: 592902.470

EASTING: 1524914.835



RECORD:  
 FD SM RR SPK  
 8-18-98, TMR  
 SET P.K./WASHER  
 9-28-98, MB  
 FD MAG/WASHER  
 REFA13  
 11-2-16, JFO  
 FD P.K.NAIL  
 REFA13  
 9/4/18, JFO



# O.D.O.T. DISTRICT 2 SURVEY OFFICE

PERSONNEL \_\_\_\_\_

REFERENCE NO. 13

SHEET 2 OF 34

NOTES Huss

H.C. Barnhiser

R.C. Rousos

DATE 8-18-98

WEATHER FAIR

TEMP. 82°

ROUTE SR 281

COUNTY Henry

TOWNSHIP Monroe

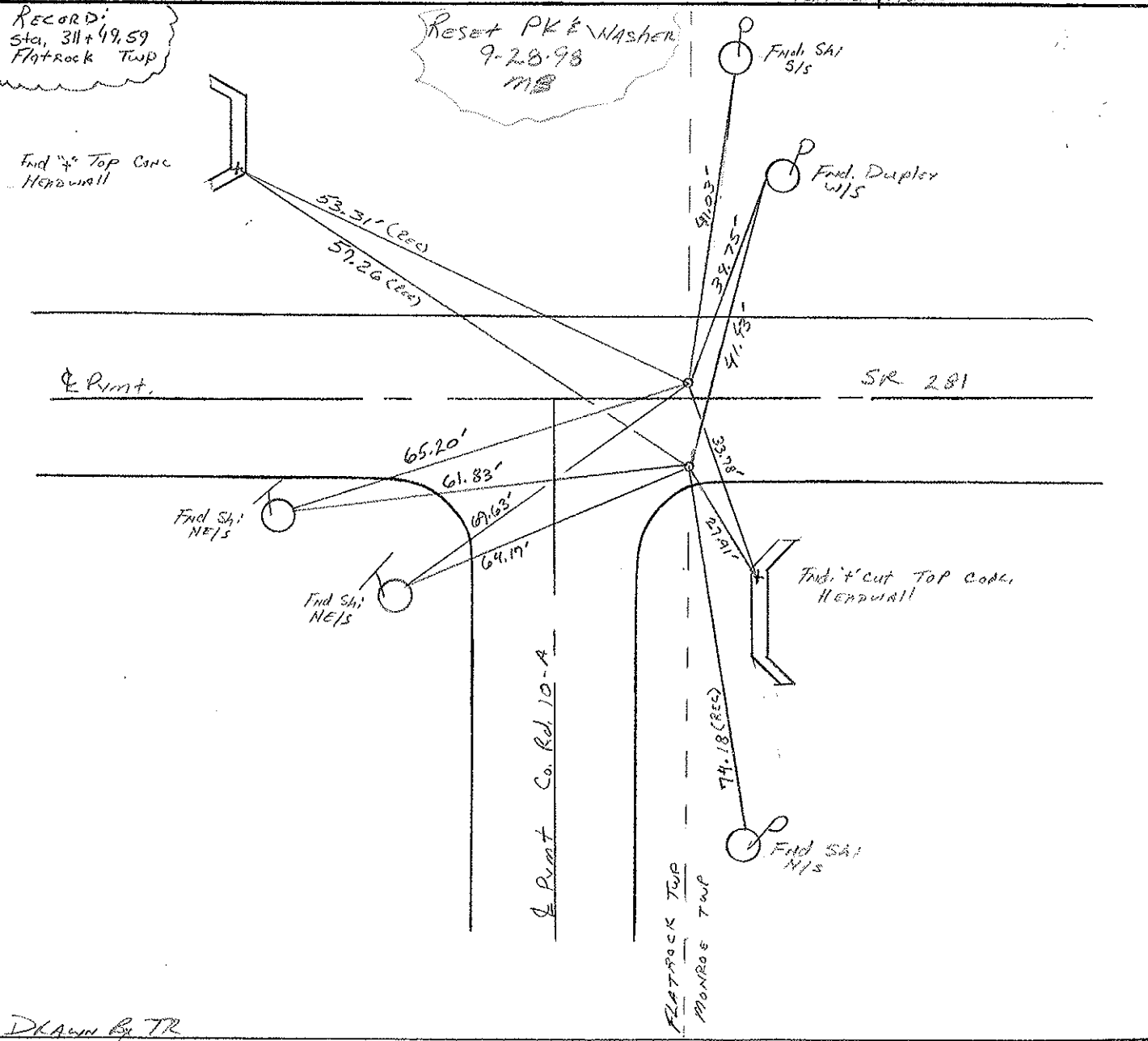
SECTION 19

T 4 N R 7 E

	A	B
TYPE MONUMENT	5m. AL SPK	5m. AL SPK
ON SURFACE - BELOW	Surface	Surface
LEFT- & PAV'T. - RIGHT	6.8' RT	ON & SR 281
TO	6.4'	
EDGE PAVEMENT		
S.L.M.	9+479.58 slk	(sta 311+18 slm)

24	19
25	30

FLATROCK MONROE



Drawn by TR

# O.D.O.T. DISTRICT 2 SURVEY OFFICE

PERSONNEL

REFERENCE NO. 13

SHEET 2 OF     

NOTES Sackman

H.C. BARNHISEL

R.C. LOEHRKE

DATE 8-12-87

WEATHER CLEAR

TEMP. +75

ROUTE SR 281

COUNTY HENRY

TOWNSHIP MONROE

SECTION 19

T4 N R 7 E

"A" TYPE MONUMENT P.K. (MONROE TWP)

"B" TYPE MONUMENT R.R. SOK (FLATROCK TWP)

FLATROCK TWP | MONROE TWP

ON SURFACE - BELOW YES

1 1/2 Below

24	19
25	30

LEFT- $\epsilon$  PAV'T. - RIGHT 6.5' RT

0.5' LT.



"A" 3.1 TO RT. EDGE PAVEMENT  
 "B" 9.9 LT  
 S.L.M. 311+18

Set small RR sok  
 both points  
8-20-87 Sack

Record:  
 Sta. 311+49.59  
 Flatrock Twp

