

O.D.O.T. DISTRICT 2 SURVEY OFFICE (USE ONLY)

PERSONNEL

REFERENCE NO. 14

SHEET 2 OF 34

NOTES HUSS

DATE 8/18/98

ROUTE SR 281

H.C. BARNHISEL

WEATHER FAIR

COUNTY HENRY

R.C. ROUSOS

TEMP. 82°

TOWNSHIP MONROE

SECTION 19

DWG BY NIESE PID CHIP_2

T 4 N R 7 E

TYPE MONUMENT SMALL R.R. SPIKE

ON SURFACE - ~~BELOW~~ ON

OFFSET \odot PAVEMENT 7.8' ~~LT~~ : RT

2.9' TO RT EDGE PAVEMENT

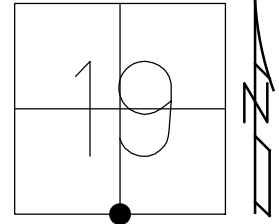
STATION: 337+74

HORZ. DATUM: NAD83(2011)

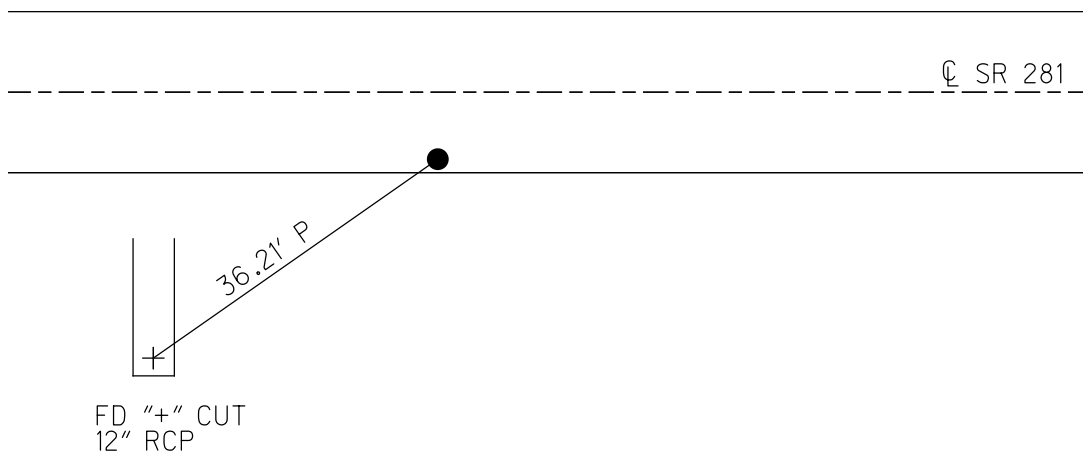
GEOID: 2012A

GRID: NORTHING: 592863.468

EASTING: 1527569.321



RECORD:
STA 338+04.5
FD SM.R.R.SPIKE
8/18/98, MB
SET P.K./WASHER
9/29/98, MB
FD P.K./WASHER
REF14
9/4/18, JFO
7/25/19, JMR



O.D.O.T. DISTRICT 2 SURVEY OFFICE

PERSONNEL

REFERENCE NO. 14

SHEET 4 OF 34

NOTES Huss

H.C. Bardwell

R.C. Rodgers

DATE 8-18-98

WEATHER Fair

TEMP. +82°F

ROUTE SR 281

COUNTY HENRY

TOWNSHIP Madros

SECTION 19

T 4 N R 7 E

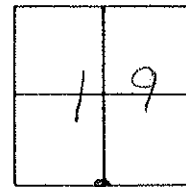
TYPE MONUMENT Sm. RR Spike

ON SURFACE - ~~BELOW~~ Surface

~~LEFT- & PAV'T.~~ - RIGHT 7.8' R

2.9' TO RT. EDGE PAVEMENT

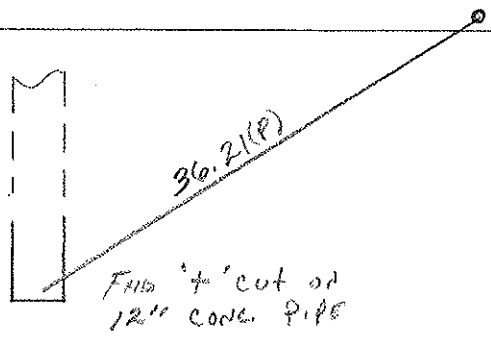
S.L.M. 10+293.69 (SLK) 337+74 (SLM)



(Reset PLE WASHER
9-29-98
MB)

RECORD:
Sta 338+04.5
1/4 Post Sec. 19

Q Point _____ SR 281



DRAWN BY TR

O.D.O.T. DISTRICT 2 SURVEY OFFICE

PERSONNEL

REFERENCE NO. 14

SHEET 4 OF

NOTES Sockman

H.C. BARNHISEL

R.C. LOHRKE

DATE 8-12-87

WEATHER CLEAR

TEMP. +75

ROUTE SR 281

COUNTY HENRY

TOWNSHIP MONROE

SECTION 19

T4 N R 7 E

TYPE MONUMENT RR SPIKE

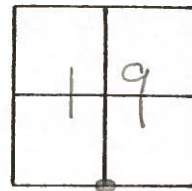
~~ON SURFACE~~ - BELOW 2"

~~LEFT - & PAV'T.~~ - RIGHT 7.5

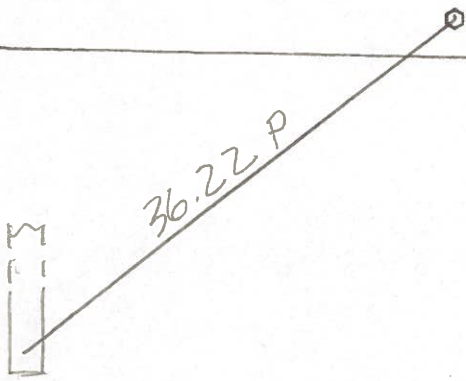
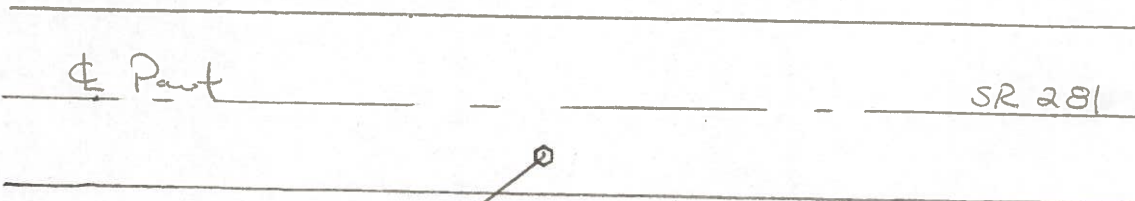
2.9 TO RT EDGE PAVEMENT

S.L.M. 337 + 74

*Set small RR spike
8-20-87
SOK*



Record!
Sta. 338+04.5
1/4 Post sec. 19



Cut +
12" CONC.
PIPE

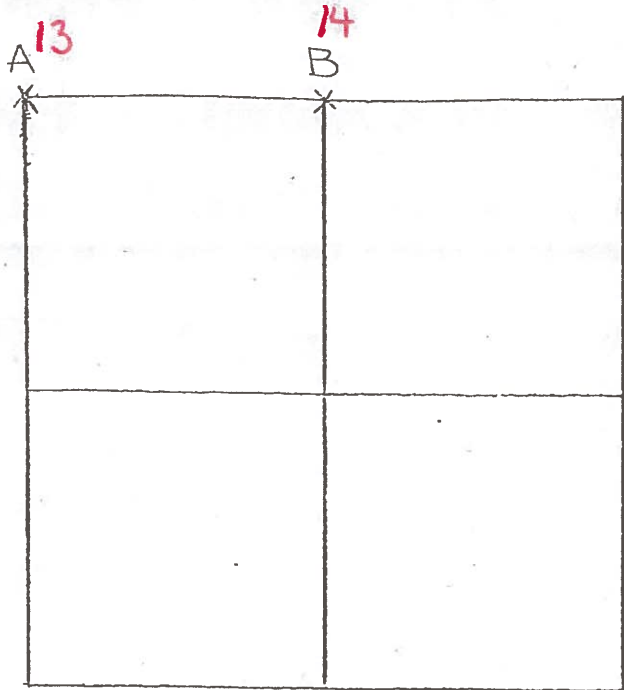
ROAD SIDE DITCH

COUNTY HENRY J.K. 281

T-4-N , R-7-E

TOWNSHIP MONROE

SECTION 30



6-22-79 R.W, J.J, G.M.

A - FOUND P.K. OVER BOAT SPIKE, OVER IRON BOLT, OVER CLAY TILE, OVER STONE (4" x 9" x 10") 18" BELOW ROAD SURFACE. P.K. WAS 0.03' SOUTH AND 0.14' WEST OF TOP CENTER OF STONE. REMOVED P.K., BOAT SPIKE, IRON BOLT AND CLAY TILE AND PLACED CENTER PUNCHED RAILROAD SPIKE ON SURFACE OVER

TOP CENTER OF STONE. P.K.'S 6' S. & W.

STONE IS 3.0' NORTH OF SOUTH EDGE OF 18' PAVEMENT

57.26' N.W. TO "+" TOP CONC. HEADWALL

41.43' N.N.E. TO DUPLEX $\frac{W}{S}$ I

27.93' S.E. TO "+" TOP CONC. HEADWALL

6.70' N. TO N.E. COR. SEC. 25; PLATROCK TWP.

S.O.F.F. PAVT. S.R. 281 G.
FD. P.K. @ SURFACE
12-7-81 S.W.H.
40°

6-27-79 R.W, J.J, G.M.

B - FOUND P.K. OVER IRON BOLT 1.0' WEST OF HIGH POINT OF STONE (8" x 11" x 13") 18" BELOW ROAD SURFACE. REMOVED P.K. & IRON BOLT AND PLACED CENTER PUNCHED RAILROAD SPIKE ON SURFACE OVER HIGH POINT OF STONE. P.K.'S 6' N. & W.

STONE IS 2.2' NORTH OF SOUTH EDGE OF 18' PAVEMENT.

61.85' N.W. TO SHINER $\frac{SE}{S}$ I

105.10' E.N.E. TO SHINER $\frac{SW}{S}$ I

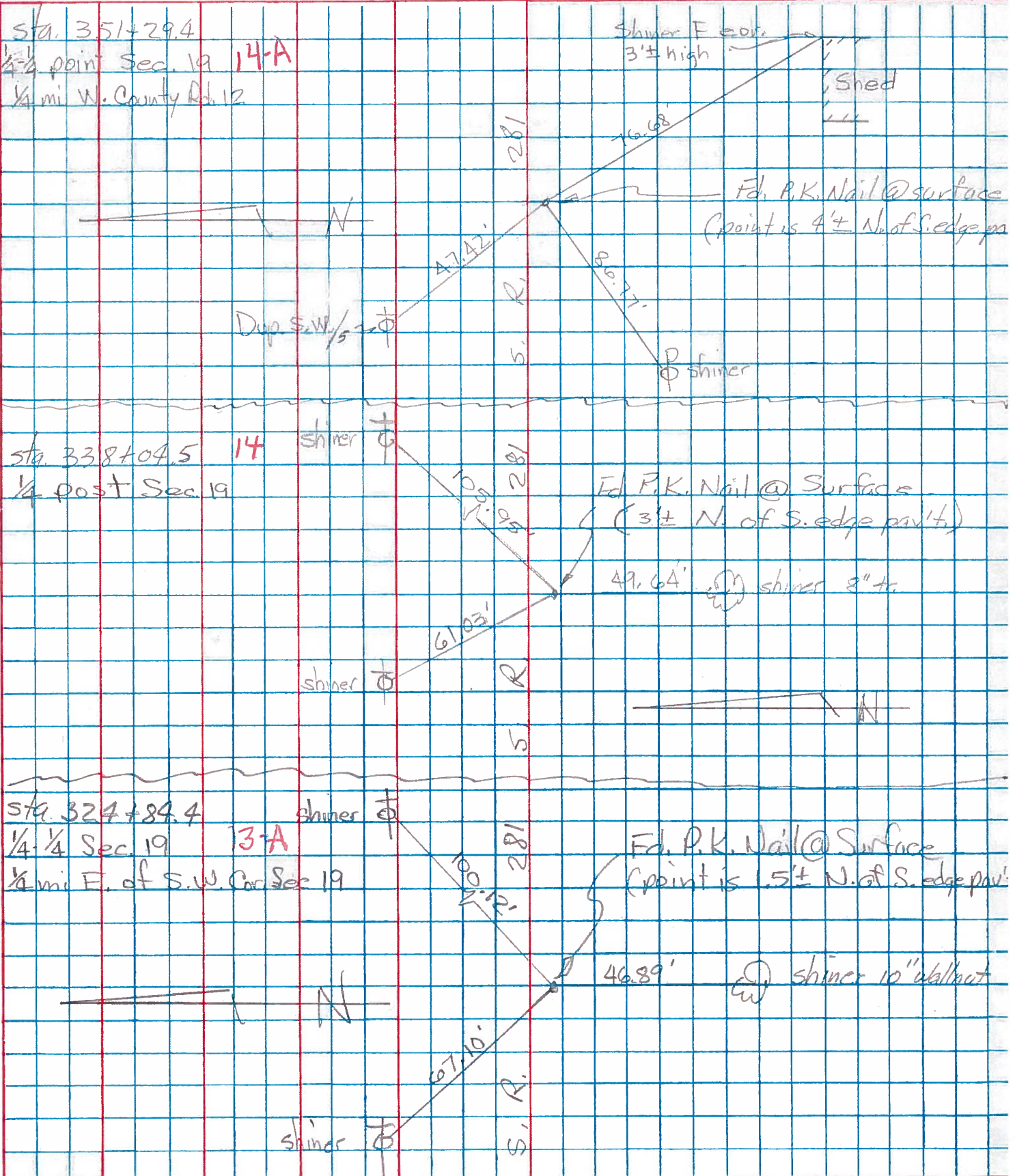
49.50' S. TO SHINER $\frac{N}{S}$ 8" MULBERRY

FD. R.R. SPIK. 2" BELOW
7.5' S.O.F.F.
3.0' N. OF S.E.P.
12-7-81 S.W.H.
40°

PERSONNEL	TITLE	PERSONNEL	TITLE
Tomsic			
Neuser			
Vanyo			
Granata			

COUNTY HENRY DATE Nov. 12, 1974
 S. R. 281 WEATHER _____
 SEC. MONROE TWP. TEMP. _____

DESCRIPTION LEFT CENTER LINE RIGHT JOB NO.



PERSONNEL TITLE PERSONNEL TITLE

COUNTY Henry

DATE 11-29-57

S. R. #281

WEATHER

SEC. "J"

TEMP

DESCRIPTION

LEFT

CENTER LINE

RIGHT

JOB NO.

#14	Sec. Cor. Sec #19 Stone (Iron Bolt) R.R. Spk. Monroe Twp	(13)	28.0' S.E. To chiseled \otimes on Hdwr 74.59' S. To R.R. Spk. in E. Side P.P. 57.19' N.W. To chiseled \otimes on Hdwr 39.52' Shi. in T. Pole N.
#15	Sec. Cor. Sec. #19 Stone (Iron Bolt) R.R. Spk. Flatrock Twp.	(13)	33.80' S.E. To chisted \otimes on Hdwr 81.26' S. To R.R. Spk. in E. side. P. Pole 53.27' N.W. To chiseled \otimes on Hdwr 32.80' Shi. in T. Pole N
#16	1/4-1/4 Cor. R.R. Spk. Bords E. S.W. Cor. Sec. 19	(13-A)	99.93' N.E. To valve in T. Pole 67.05' N.W. To 60 ^d spk. T. Pole 47.0 ⁷ ' S. To Shi. 8" walnut
#17	1/4 Cor. Stone (Iron Bolt) (R.R. Spk)	(14)	58.15' 58.50' S.E. To 60 ^d Spk. in W. Side 105.95' N.E. To Shi. in T. Pole 10" Apple 41.60' S. To 1" Gas Pipe 50.00' N. To 1" Gas Pipe 61.06' N.W. To 60 ^d Spk. in T. Pole
#18	1/4-1/4 Cor. Stone (R.R. Spk) Bords. W. S.E. Cor.	(14-A)	76.95' 77.00' S.E. To N.E. Cor Conc. 73.80' Corp Crib. Foundation 73.95' S. To N.W. Cor. Conc. 47.45' Corp Crib. Foundation 47.53' N.W. To 60 ^d Spk. W. side T. Pole 86.81 S.W. To Shi. P. Pole
#19	S.E. Cor. Sec 19 R.R. Spk.	(15)	80.04' 80.42' S.W. To 60 ^d Spk. in N. Side 20" a 42.57 S.E. Shi. T.P. 71.44' S.W. To " " " S.E. " 12" P/w. 44.02 S.W. Shi. P.P. 40.47' N.E. To " " " S.E. " 10" E/m 45.98 39.97' \nearrow Shi. in T.P. N.E. 42.24' clun 48.80' + N.W. Twp 60" conc. Pipe
#20	1/4 1/4 Cor. Stone Did not find any Trace of iron bolt 4 1/2" l 1 1/2" P. Pole	(15-A)	96.50' N.E. To 60 ^d Spk. in Tel. Pole 73.50' N.W. To Spk. in 12" Pear 60.50' N.W. To 60 ^d Spk. in Tel. Pole 82.52' S.E. Shi. in P. Pole