

O.D.O.T. DISTRICT 2 SURVEY OFFICE (USE ONLY)

PERSONNEL

REFERENCE NO. 14 A

SHEET 3 OF 34

NOTES HUSS DATE 8/18/98

ROUTE SR 281

H.C. BARNHEISEL WEATHER FAIR

COUNTY HENRY

R.C. ROUSOS TEMP. 82°

TOWNSHIP MONROE

SECTION 19

DWG BY NIESE PID CHIP\_2

T 4 N R 7 E

TYPE MONUMENT SM.R.R.SPIKE

ON SURFACE - ~~BELOW~~ ON

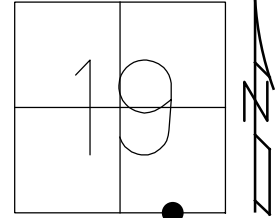
OFFSET ☉ PAVEMENT 6.5' ~~±~~ : RT

4.1' TO RT EDGE PAVEMENT

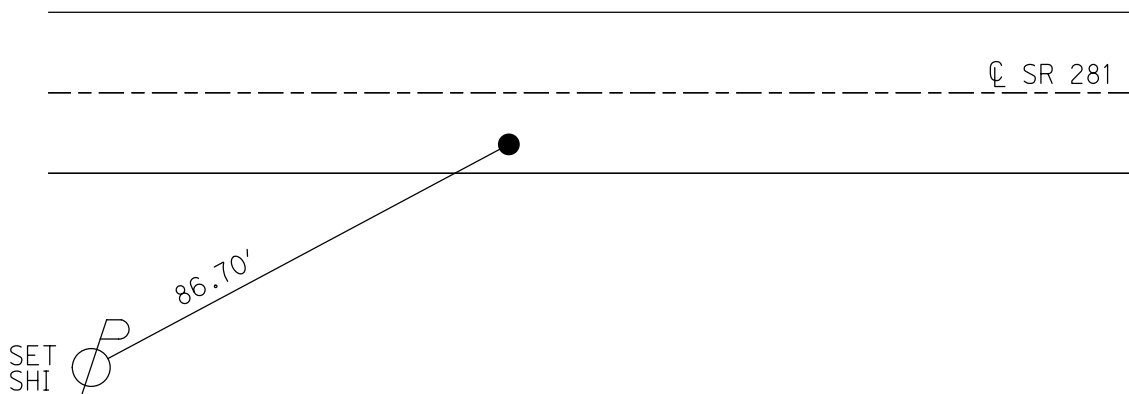
STATION: 350+99

HORZ.DATUM: NAD83(2011) GEOID: 2012A

GRID: NORTHING: 592844.073 EASTING: 1528893.769



RECORD:  
351+29.4  
1/4-1/4 SEC 19  
FD P.K./WASHER  
REFA14  
9/4/18, JFO  
7/25/19, JMR



O.D.O.T. DISTRICT 2 SURVEY OFFICE

PERSONNEL

REFERENCE NO. 14-A

SHEET 5 OF 34

NOTES Huss

H.C. Barrabee

R.C. Rowan

DATE 8.18.98

WEATHER FAIR

TEMP. +82°F

ROUTE SR 281

COUNTY HENRY

TOWNSHIP MONROE

SECTION 19

T4 N R 7 E

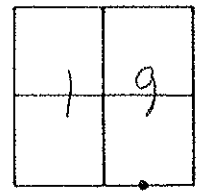
TYPE MONUMENT Sm. RR spike

ON SURFACE -BELOW Surface

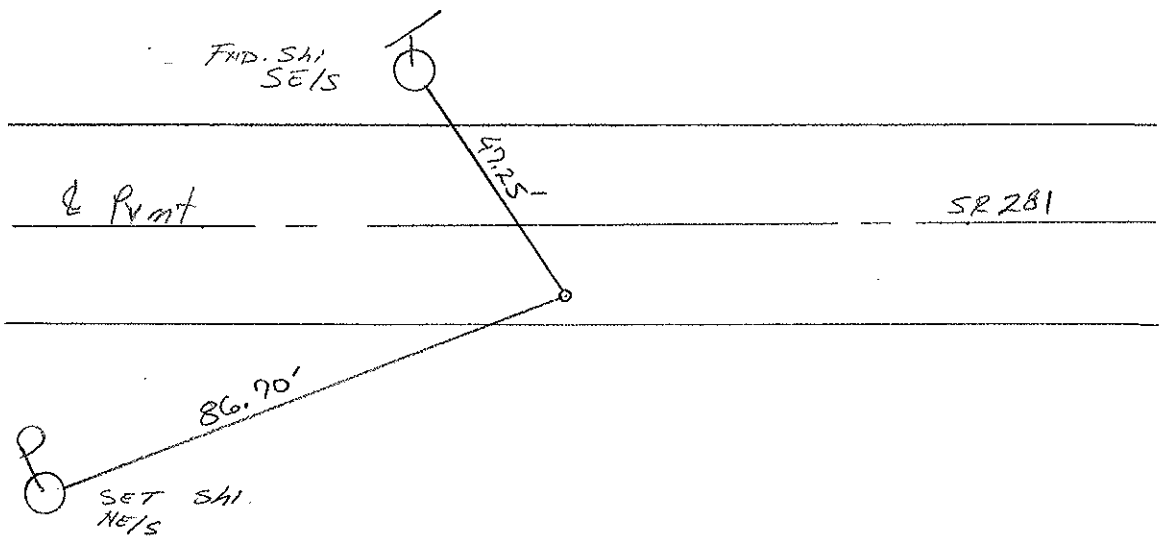
~~LEFT~~ - & PAV'T. - RIGHT 6.5' RT

4.1' TO RT EDGE PAVEMENT

S.L.M. 10+700 (GLK), 350+99 (GLM)



RECORD!  
Sta. 351+29.4  
1/4 - 1/8 sec 19



# O.D.O.T. DISTRICT 2 SURVEY OFFICE

PERSONNEL \_\_\_\_\_

REFERENCE NO. 14-A

SHEET 5 OF \_\_\_\_\_

NOTES See map

H.C. BARNHISE

DATE 8-12-87

ROUTE SR 281

R.C. LOEHRKE

WEATHER Clear

COUNTY HENRY

TEMP. +80

TOWNSHIP MONROE

SECTION 19

T4 N R 7 E

TYPE MONUMENT P.K. Nail

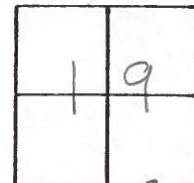
Set small RR spike  
8-20-87  
JWL

~~ON SURFACE - BELOW~~ 1 1/2"

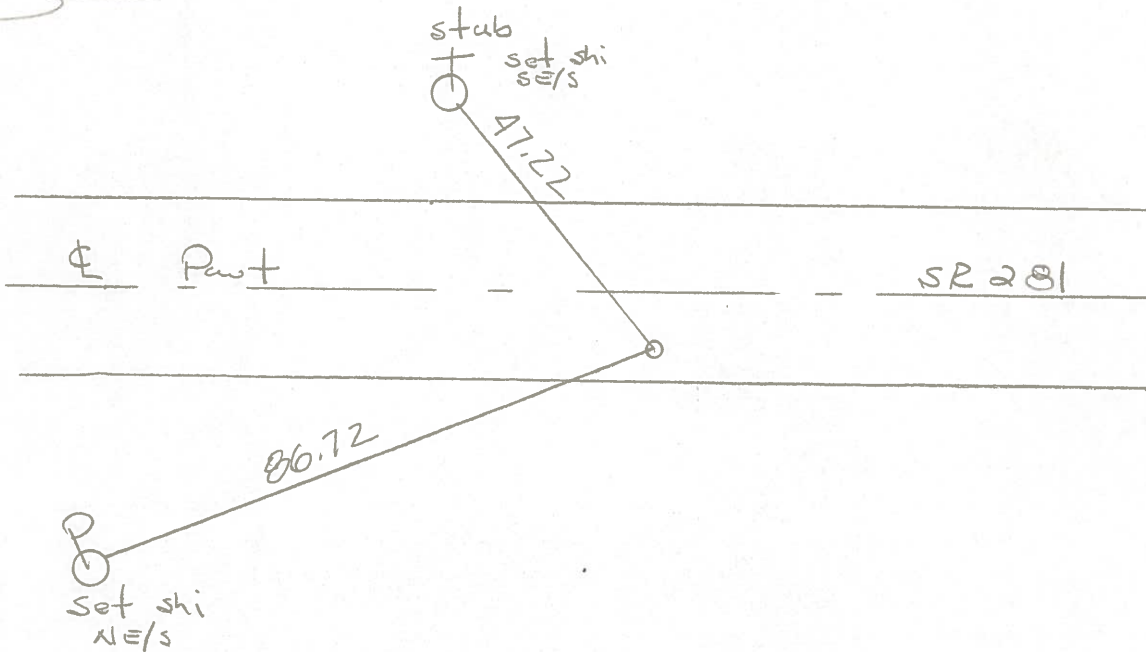
~~LEFT- & PAV'T. - RIGHT~~ 6.2'

3.9 TO RT EDGE PAVEMENT

S.L.M. 350 + 99



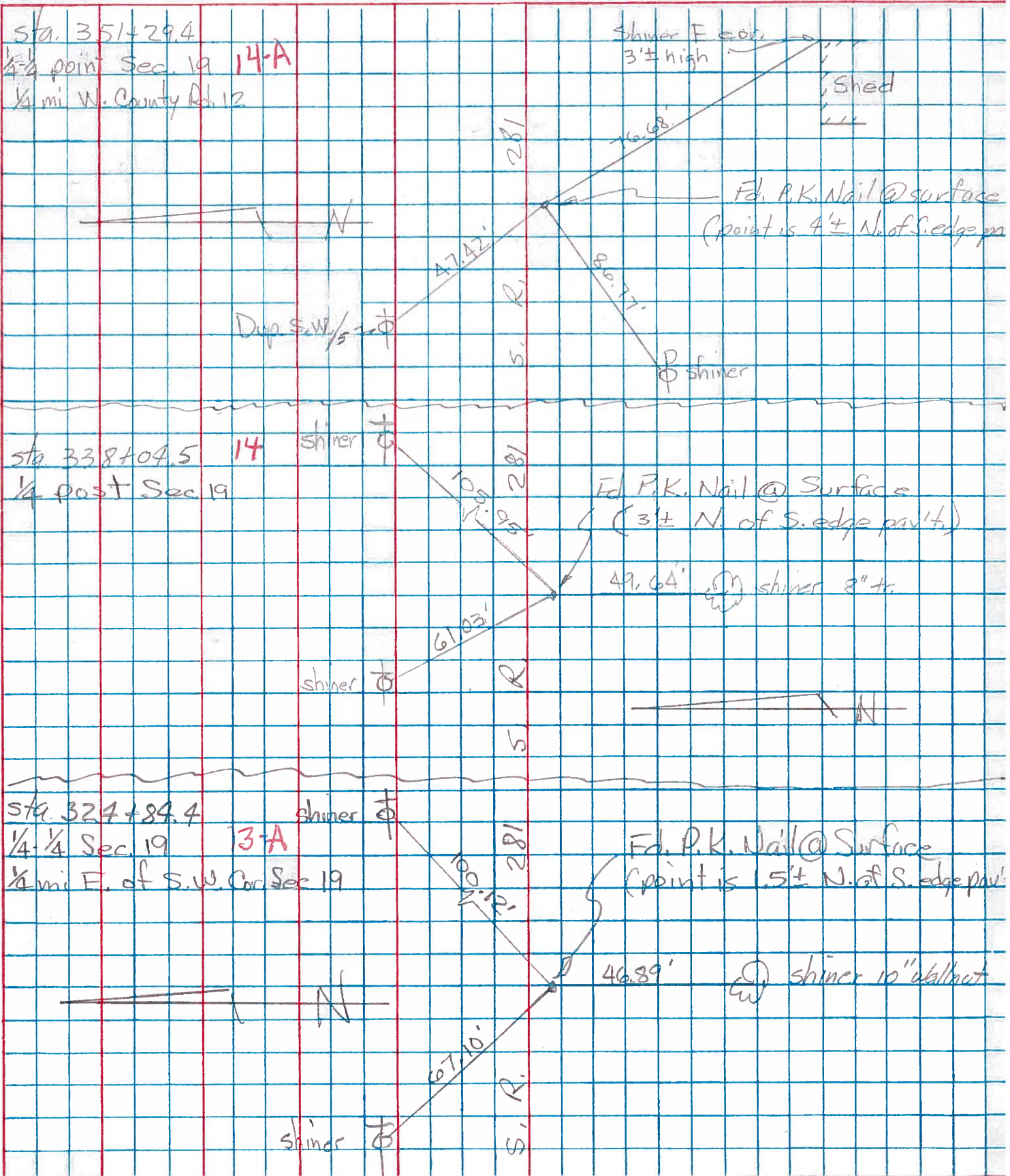
Record:  
Sta. 351 + 29.4  
1/4 - 1/4 sec. 19



PERSONNEL	TITLE	PERSONNEL	TITLE
Tomsic			
Neuser			
Vanyo			
Granata			

COUNTY HENRY DATE Nov. 12, 1974  
 S. R. 281 WEATHER             
 SEC. MONROE TWP. TEMP.           

DESCRIPTION	LEFT	CENTER LINE	RIGHT	JOB NO.
-------------	------	-------------	-------	---------



PERSONNEL TITLE PERSONNEL TITLE

COUNTY Henry

DATE 11-29-57

S. R. #281

WEATHER

10-24-60

SEC. "J"

TEMP

DESCRIPTION

LEFT

CENTER LINE

RIGHT

JOB NO.

#14	Sec. Cor. Sec #19 Stone (Iron Bolt) R.R. Spk. Monroe Twp	(13)	28.0' S.E. To chiseled $\otimes$ on Hdwr 74.59' S. To R.R. Spk. in E. Side P.P. 57.19' N.W. To chiseled $\otimes$ on Hdwr 39.52' Shi. in T. Pole N.
#15	Sec. Cor. Sec. #19 Stone (Iron Bolt) R.R. Spk. Flatrock Twp.	(13)	33.80' S.E. To chisted $\otimes$ on Hdwr. 81.26' S. To R.R. Spk. in E. Side. P. Pole 53.27' N.W. To chiseled $\otimes$ on Hdwr 32.80' Shi. in T. Pole N
#16	1/4-1/4 Cor. R.R. Spk. Bords E. S.W. Cor. Sec. 19	(13-A)	99.93' N.E. To valve in T. Pole 67.05' N.W. To 60 $\frac{1}{2}$ spk. T. Pole 47.0 $\frac{1}{8}$ ' S. To Shi. 8" Walnut
#17	1/4 Cor. Stone (Iron Bolt) (R.R. Spk)	(14)	58.15' <del>58.50'</del> S.E. To 60 $\frac{1}{2}$ spk. in W. Side 105.95' N.E. To Shi. in T. Pole 10" Apple 41.60' S. To 1" Gas Pipe 50.00' N. To 1" Gas Pipe 61.06' N.W. To 60 $\frac{1}{2}$ spk. in T. Pole
#18	1/4-1/4 Cor. Stone (R.R. Spk) Bords. W. S.E. Cor.	(14-A)	76.95' 77.00' S.E. To N.E. Cor. Conc. 73.80' Corp. Crib. Foundation 73.95' S. To N.W. Cor. Conc. 47.45' Corp. Crib. Foundation 47.53' N.W. To 60 $\frac{1}{2}$ spk. W. side T. Pole 86.81 S.W. To Shi. P. Pole
#19	S.E. Cor. Sec 19 R.R. Spk.	(15)	80.12' 80.38' S.W. To 60 $\frac{1}{2}$ spk. in N. Side 20" a 42.57 S.E. Shi. T.P. 71.44' S.W. To " " " S.E. " 12" Plw. 46.02 S.W. Shi. P.P. 40.47' N.E. To " " " S.E. " 10" Elm 45.98 39.97' $\nearrow$ Shi. in T.P. N.E. 42.24' clun 48.80' + N.W. Twp 60" conc. Pipe
#20	1/4 1/4 Cor. Stone Did not find any Trace of iron bolt 4 1/2" 11 15-A	(15-A)	96.50' N.E. To 60 $\frac{1}{2}$ spk. in Tel. Pole 73.50' N.W. To spk. in 12" Pear 60.50' N.W. To 60 $\frac{1}{2}$ spk. in Tel. Pole 82.52' S.E. Shi. in T. Pole