

O.D.O.T. DISTRICT 2 SURVEY OFFICE (USE ONLY)

PERSONNEL

REFERENCE NO. 15

SHEET 4 OF 34

NOTES MILLER DATE 9/4/18

H.C. O'DONNELL WEATHER SUNNY

R.C. MILLER TEMP. 85°

ROUTE SR 281

COUNTY HENRY

TOWNSHIP MONROE

SECTION 20

DWG BY NIESE PID CHIP\_2

T 4 N R 7 E

TYPE MONUMENT LG.R.R.SPIKE

~~ON SURFACE~~ - BELOW 5"

OFFSET ☉ PAVEMENT 5.4' ~~LT~~ : RT

- TO - EDGE PAVEMENT

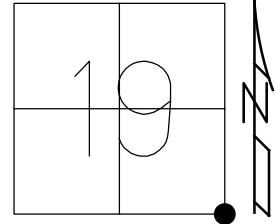
STATION: 364+24

HORZ.DATUM: NAD83(2011)

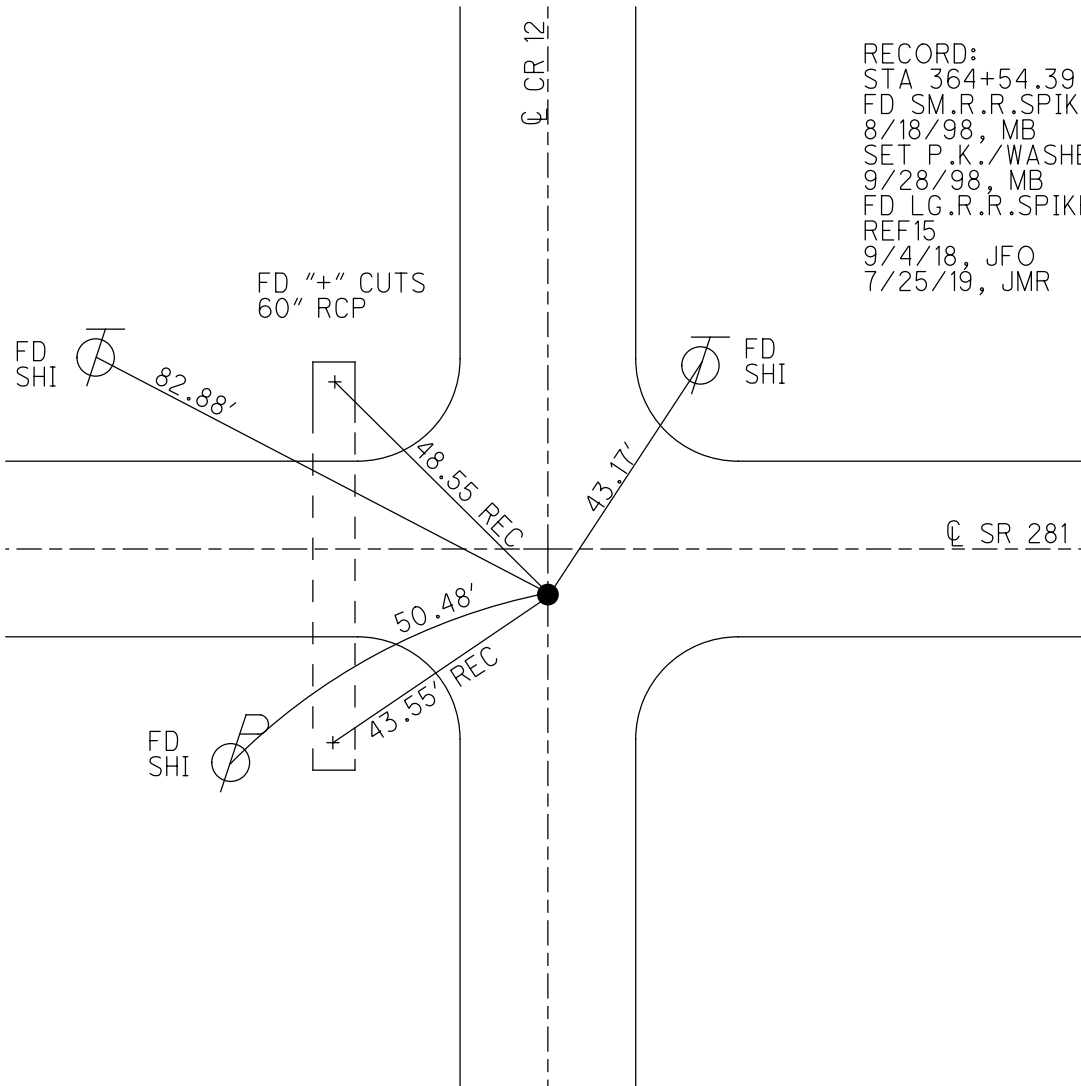
GEOID: 2012A

GRID: NORTHING: 592825.025

EASTING: 1530281.756



RECORD:  
 STA 364+54.39  
 FD SM.R.R.SPIKE  
 8/18/98, MB  
 SET P.K./WASHER  
 9/28/98, MB  
 FD LG.R.R.SPIKE  
 REF 15  
 9/4/18, JFO  
 7/25/19, JMR



# O.D.O.T. DISTRICT 2 SURVEY OFFICE

PERSONNEL \_\_\_\_\_

REFERENCE NO. 15

SHEET 6 OF 34

NOTES Mus

H.C. Barbuse

DATE 8-18-98

ROUTE SR 281

R.C. Rouba

WEATHER Fair

COUNTY HENRY

TEMP. + 82° F

TOWNSHIP MONROE

SECTION 20

T 4 N R 7 E

TYPE MONUMENT Sm. RR Spike

ON SURFACE - ~~BELOW~~ Surface

LEFT - ~~CL~~ PAV'T. - RIGHT 5.4' RT

TO EDGE PAVEMENT ON CL CR #12

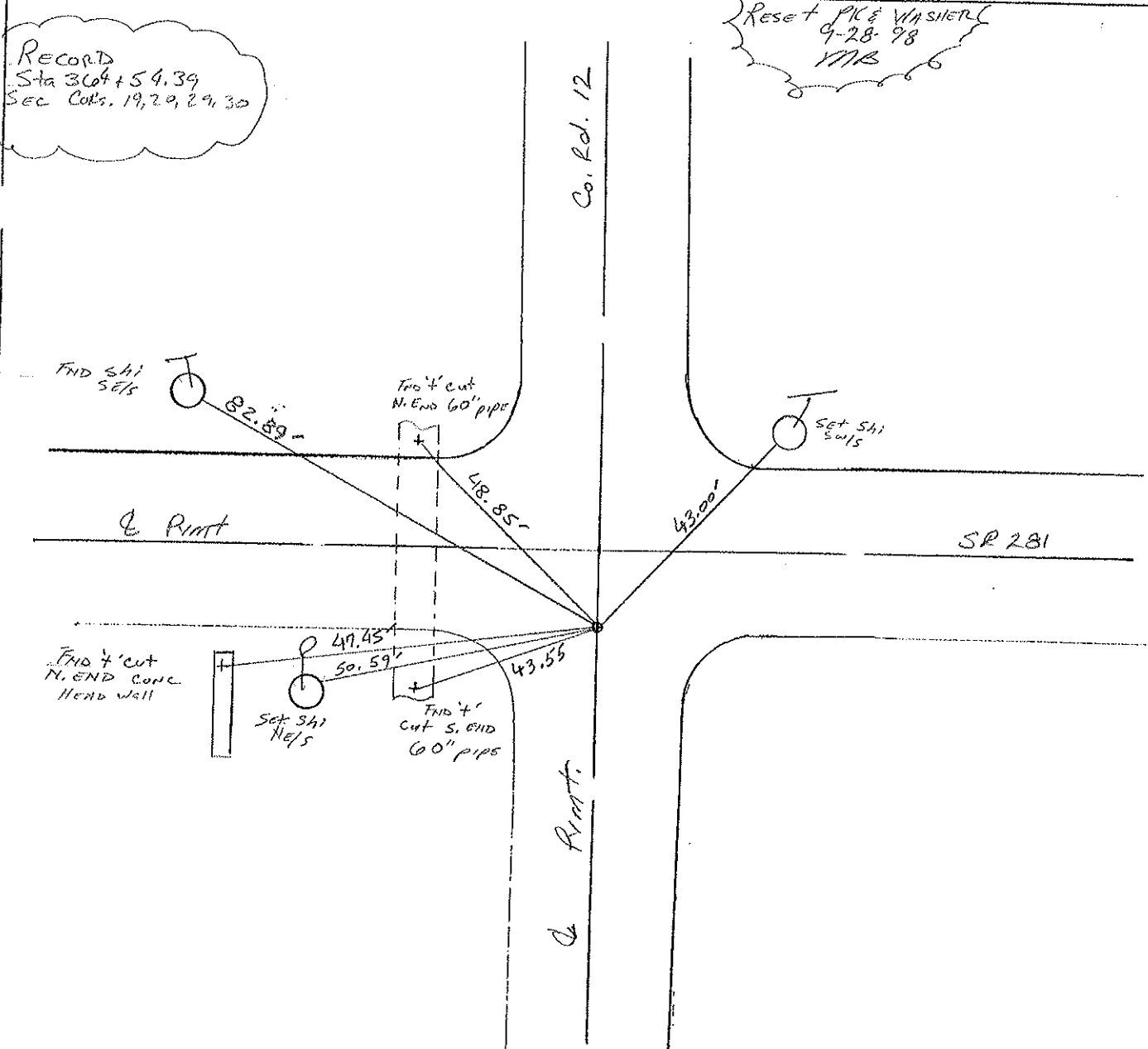
S.L.M. 11 + 106.28 (SLK), 364 + 24 (SLM)

19	20
30	29



RECORD  
 Sta 364 + 54.39  
 Sec Cols. 19, 20, 29, 30

Reset Pk & Washers  
 9-28-98  
 MMB



Drawn By TR

# O.D.O.T. DISTRICT 2 SURVEY OFFICE

PERSONNEL

REFERENCE NO. 15

SHEET 6 OF         

NOTES SOCKMAN

H.C. BARNHISE

R.C. LOEHRKE

DATE 8-12-87

WEATHER CLEAR, Humid

TEMP. + 80

ROUTE SR 281

COUNTY HENRY

TOWNSHIP MONROE

SECTION 20

T4 N R 7 E

TYPE MONUMENT R.R. SPIKE

~~ON SURFACE~~ - BELOW 1 1/2"

~~LEFT- & PAV'T.~~ - RIGHT 5.1

~~TO~~ EDGE PAVEMENT 1' West of & Pavt North

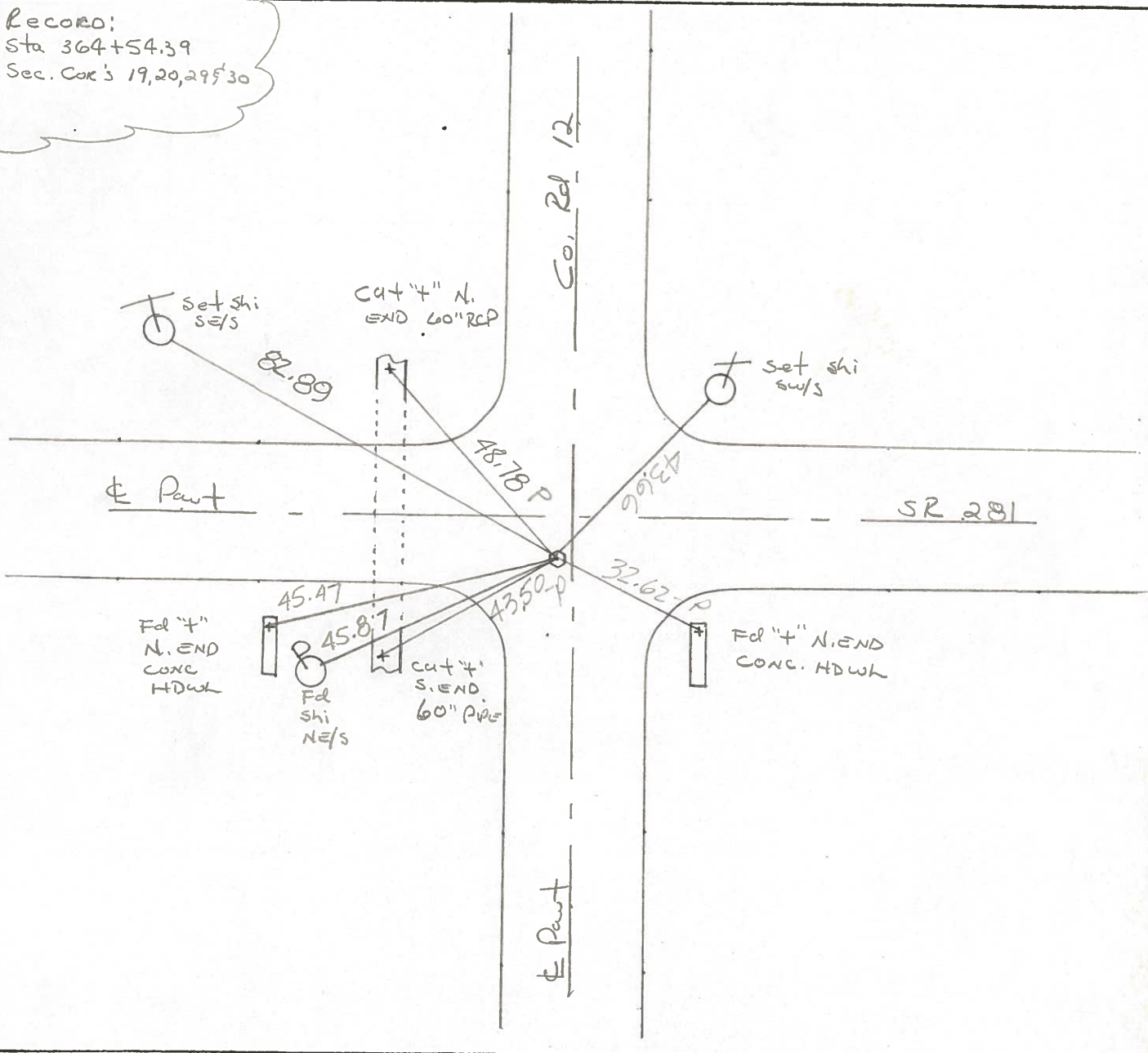
S.L.M. 364+24

Set small RR spike  
8-20-87  
SOK

19	20
30	29



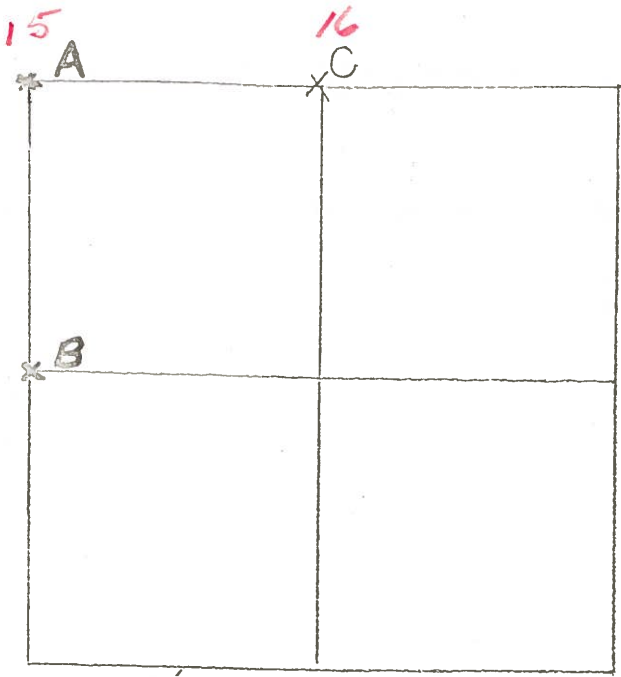
RECORD:  
Sta 364+54.39  
Sec. COR'S 19, 20, 29 & 30



COUNTY HENRY  
TOWNSHIP MONROE S.R. 281  
SECTION 29

T 4 N , R 7 E

Aug. 14, 1975  
JG., R.S., BB., S.S.



A- Found stone 13 1/2" Deep,  
 also found P.K. on surface  
 over baby R.R. Spk. over R.R.  
 Spk. over ctr. of stone. Found  
 hubs to S & E of stone. Placed  
 R.R. Spk. on surface. P.K.'s 6' N & W  
 Stone is 5.5' S. of E Part.  
 43.25' N.E. to N & S  $\phi$

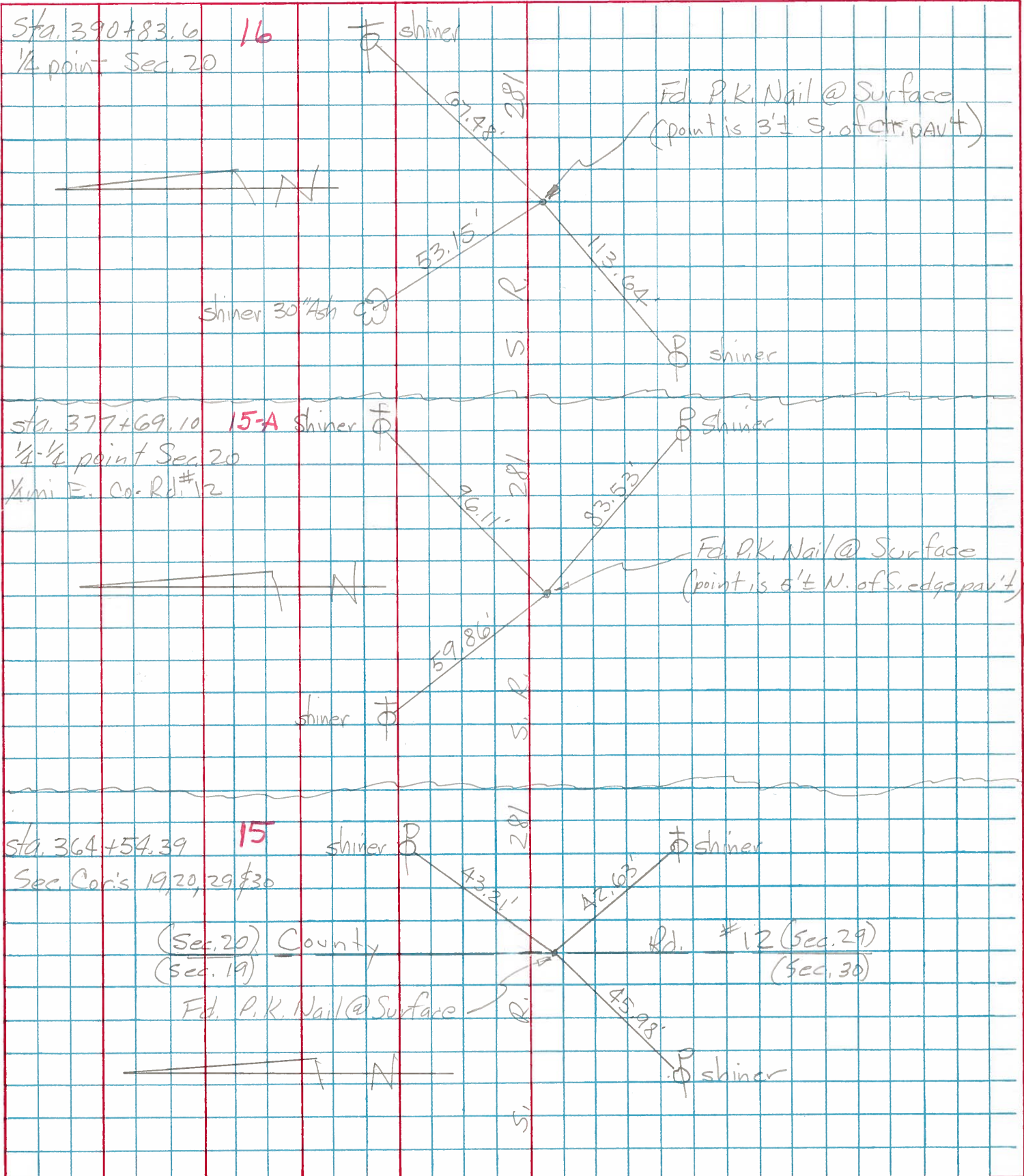
- 32.58<sup>62'</sup> S.E. to "X" on concrete Headwall
- 42.61<sup>63'</sup> S.E. to Nail & Shiner  $\phi$
- 45.87<sup>89'</sup> S.W. to Nail & Shiner  $\phi$
- 45.39<sup>48'-P</sup> S.W. to "X" on concrete headwall

F.S. R.R. SPK.  
 5.1' S OF  $\phi$   
 1 1/2" DEEP.  
 12-7-81  
 40° S.W. H.

- B- Found 3/4" Iron Pipe over Stone, Stone is 11" Deep  
 Pipe is 3" Below Surface, Stone is 2'-6" E. of W. Edge  
 of Part. P.K.'s 6' N. & E.
- 102.71' N.E. to P.K. W/S  $\phi$
- 42.04' S.E. to P.K. SW/S  $\phi$
- 71.71' N.W. to P.K. E/S  $\phi$

PERSONNEL	TITLE	PERSONNEL	TITLE	COUNTY	DATE
Tomsic				HENRY	Nov. 18, 1974
Neuser				S. R. 281	WEATHER
Van yo				SEC. MONROE TWP.	TEMP.
Granata					

DESCRIPTION	LEFT	CENTER LINE	RIGHT	JOB NO.
-------------	------	-------------	-------	---------



PERSONNEL TITLE PERSONNEL TITLE

COUNTY Henry DATE 11-29-57

S. R. #281 WEATHER 10-24-60

SEC. "J" TEMP.

DESCRIPTION LEFT CENTER LINE RIGHT JOB NO.

#14 Sec. Cor. Sec #19 Stone (Iron Bolt) R.R. Spk. Monroe Twp  
 28.0' S.E. To chiseled  $\otimes$  on Hdwr  
 74.59' S. To R.R. Spk. in E. side P.P.  
 57.19' N.W. To chiseled  $\otimes$  on Hdwr  
 39.52' Shi. in T. Pole N.  
 (13)

#15 Sec. Cor. Sec #19 Stone (Iron Bolt) R.R. Spk. Flatrock Twp.  
 33.80' S.E. To chisted  $\otimes$  on Hdwr.  
 81.26' S. To R.R. Spk. in E. side.  
 P. Pole  
 53.27' N.W. To chiseled  $\otimes$  on Hdwr  
 32.80' Shi. in T. Pole N  
 (13)

#16 1/4-1/4 Cor. R.R. Spk. Bords E. S.W. Cor. Sec. 19  
 99.93' N.E. To valve in T. Pole  
 67.05' N.W. To 60 $\frac{1}{2}$  spk. T. Pole  
 47.0 $\frac{1}{2}$ ' S. To Shi. 8" Walnut  
 (13-A)

#17 1/4 Cor. Stone (Iron Bolt) (R.R. Spk)  
 58.15'  
 58.50' S.E. To 60 $\frac{1}{2}$  spk. in W. side  
 105.95' N.E. To Shi. in T. Pole 10" Apple  
 41.60' S. To 1" Gas Pipe  
 50.00' N. To 1" Gas Pipe  
 61.06' N.W. To 60 $\frac{1}{2}$  spk. in T. Pole  
 (14)

#18 1/4-1/4 Cor. Stone (R.R. Spk) Bords. W. S.E. Cor.  
 76.95'  
 77.00' S.E. To N.E. Cor. Conc.  
 Corp Crib. Foundation  
 73.80'  
 73.95' S. To N.W. Cor. Conc.  
 Corp Crib. Foundation  
 47.45'  
 47.53' N.W. To 60 $\frac{1}{2}$  spk. W. side  
 T. Pole  
 86.81 S.W. To Shi. P. Pole  
 (14-A)

#19 S.E. Cor. Sec 19 R.R. Spk.  
 80.04'  
 80.42' 80.38' S.W. To 60 $\frac{1}{2}$  spk. in N. Side 20" a  
 42.57 S.E. Shi. T.P. 71.44' S.W. To " " " S.E. " 12" Plu  
 46.02 S.W. Shi. P.P. 40.47' N.E. To " " " S.E. " 10" Elm  
 45.98 39.97' Shi. in T.P. N.E. 42.24' clun  
 48.80' N.W. Top 60" conc. Pipe  
 (15)

#20 1/4 1/4 Cor. Stone  
 Did not find any Trace of iron bolt  
 96.50' N.E. To 60 $\frac{1}{2}$  spk in Tel. Pole  
 73.50' N.E. To spk in 12" Pear  
 60.50' N.W. To 60 $\frac{1}{2}$  spk. in Tel. Pole  
 82.52' S.E. Shi. in T. Pole  
 (15-A)