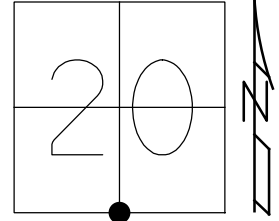


O.D.O.T. DISTRICT 2 SURVEY OFFICE (USE ONLY)

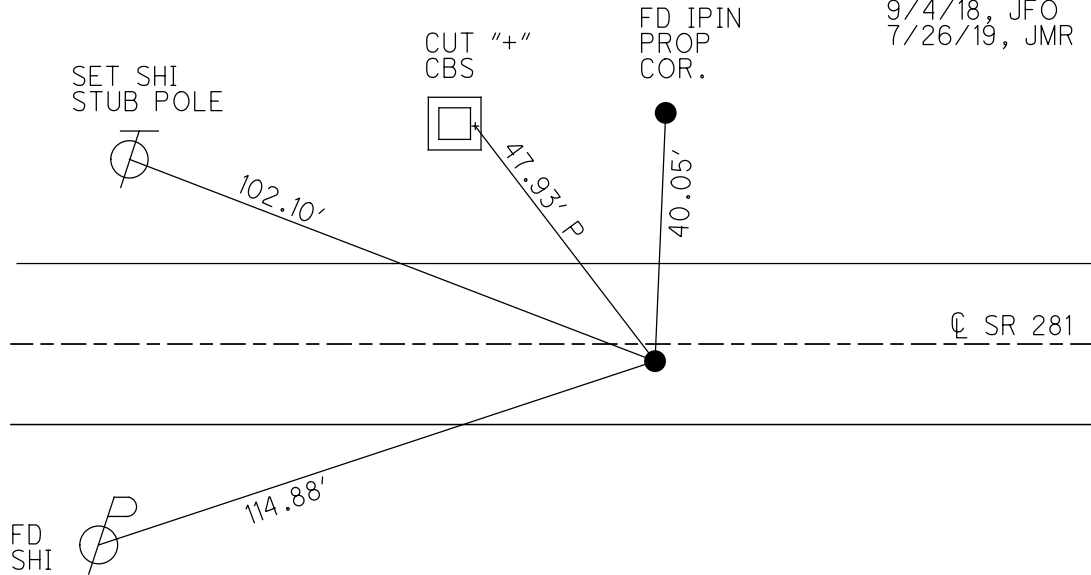
PERSONNEL _____ REFERENCE NO. 16 SHEET 6 OF 34
 NOTES HUSS DATE 8/18/98 ROUTE SR 281
 H.C. BARNHISEL WEATHER FAIR COUNTY HENRY
 R.C. ROUSOS TEMP. 84° TOWNSHIP MONROE
 DWG BY NIESE PID CHIP_2 SECTION 20
 T 4 N R 7 E

TYPE MONUMENT SM.R.R.SPIKE
 ON SURFACE - ~~BELOW~~ ON
 OFFSET C PAVEMENT 2.7' ~~RT~~ : RT
8.4' TO RT EDGE PAVEMENT
 STATION: 390+54

HORZ.DATUM: NAD83(2011) GEOID: 2012A
 GRID: NORTHING: 592812.011 EASTING: 1532846.974



RECORD:
 STA 390+83.6
 FD SM.R.R.SPIKE
 8/18/98, MB
 SET P.K./WASHER
 9/28/98, MB
 FD P.K./WASHER
 REF16
 9/4/18, JFO
 7/26/19, JMR



O.D.O.T. DISTRICT 2 SURVEY OFFICE

PERSONNEL _____

REFERENCE NO. 16

SHEET 8 OF 34

NOTES Huss

H.C. Barnhisel

DATE 8-18-98

ROUTE SR 281

R.C. Rouses

WEATHER Fair

COUNTY HENRY

TEMP. + 89°F

TOWNSHIP MONROE

SECTION 20

T4N R2E

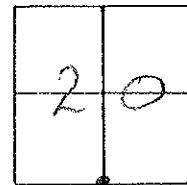
TYPE MONUMENT 3" RR spike

ON SURFACE - ~~BELOW~~ ON SURFACE

~~LEFT~~ - PAV'T. - RIGHT 2.7 RT

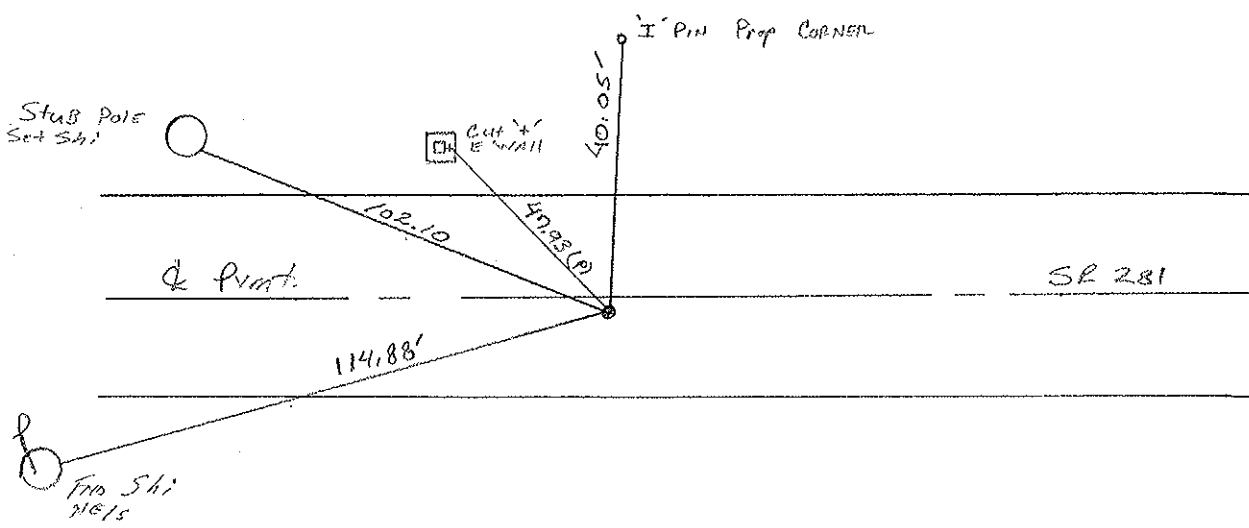
8.4' TO RT. EDGE PAVEMENT

S.L.M. 11+912.28 (SLK), 390 x 54 (SLM)



RECORD
 Sta 390+83.6
 1/4 post Sec 20

Reset PK & WASHED
 9-28-98
 MB



DRAWN BY MB

O.D.O.T. DISTRICT 2 SURVEY OFFICE

PERSONNEL

REFERENCE NO. 16

SHEET 8 OF

NOTES SOCKMAN

H.C. BARNHISEL

R.G. LOEHRKE

DATE 8-12-87

WEATHER Clear

TEMP. +82

ROUTE SR 281

COUNTY HENRY

TOWNSHIP MONROE

SECTION 20

T4 N R 7 E

TYPE MONUMENT R.P. SPIKE

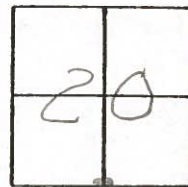
~~ON SURFACE~~ - BELOW 1 1/2"

~~LEFT - & PAV'T. - RIGHT~~ 2.4

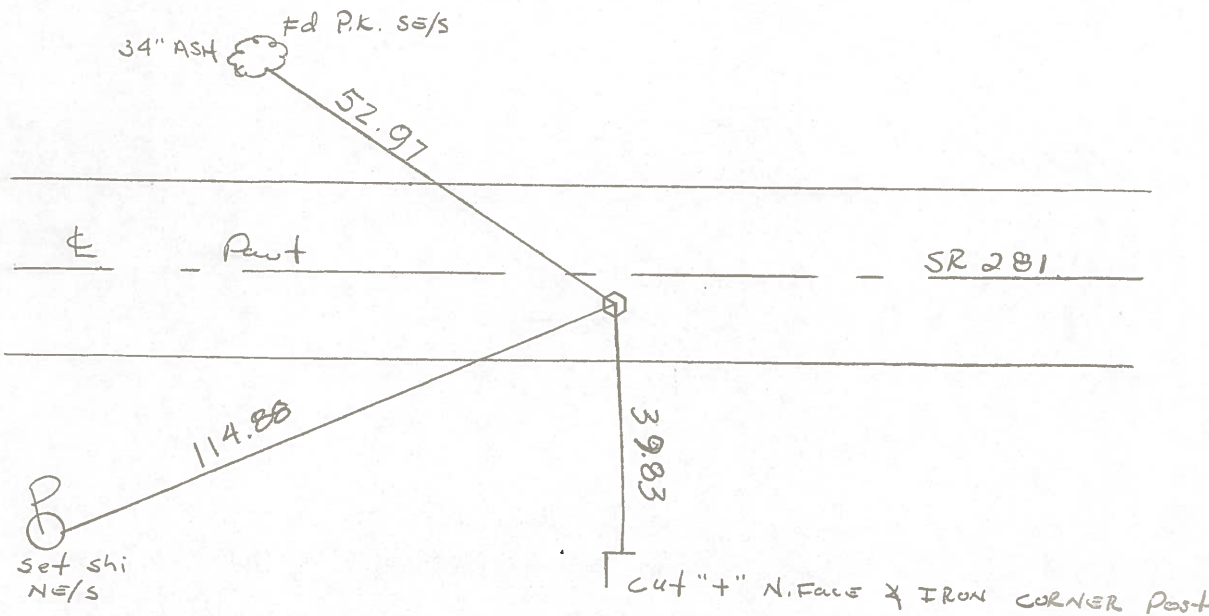
7.8 TO RT EDGE PAVEMENT

S.L.M. 390 + 54

Set Sm RR
Spike
8-20-87



Records:
Sta. 390+83.6
1/4 Part sec 20

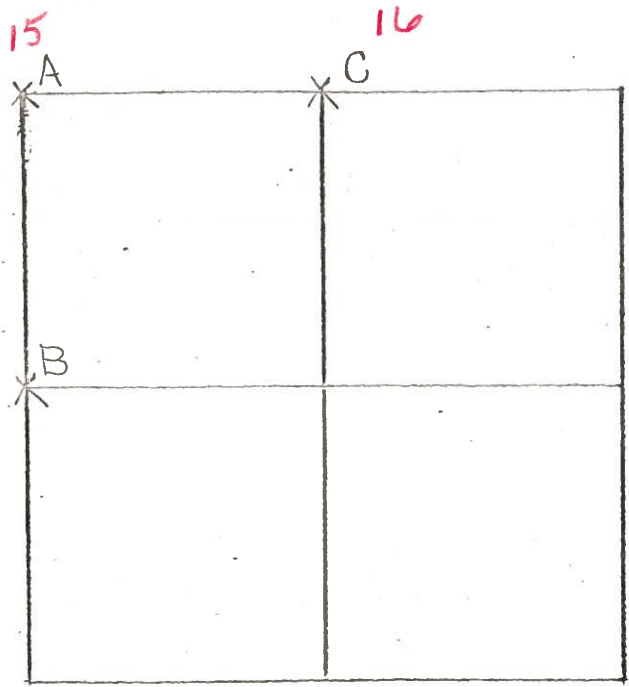


COUNTY HENRY S.R. 281

SHEET 2 OF 2
T 4 N . R 7 E

TOWNSHIP MONROE

SECTION 29



6-27-79 R.W, J.J, G.M.

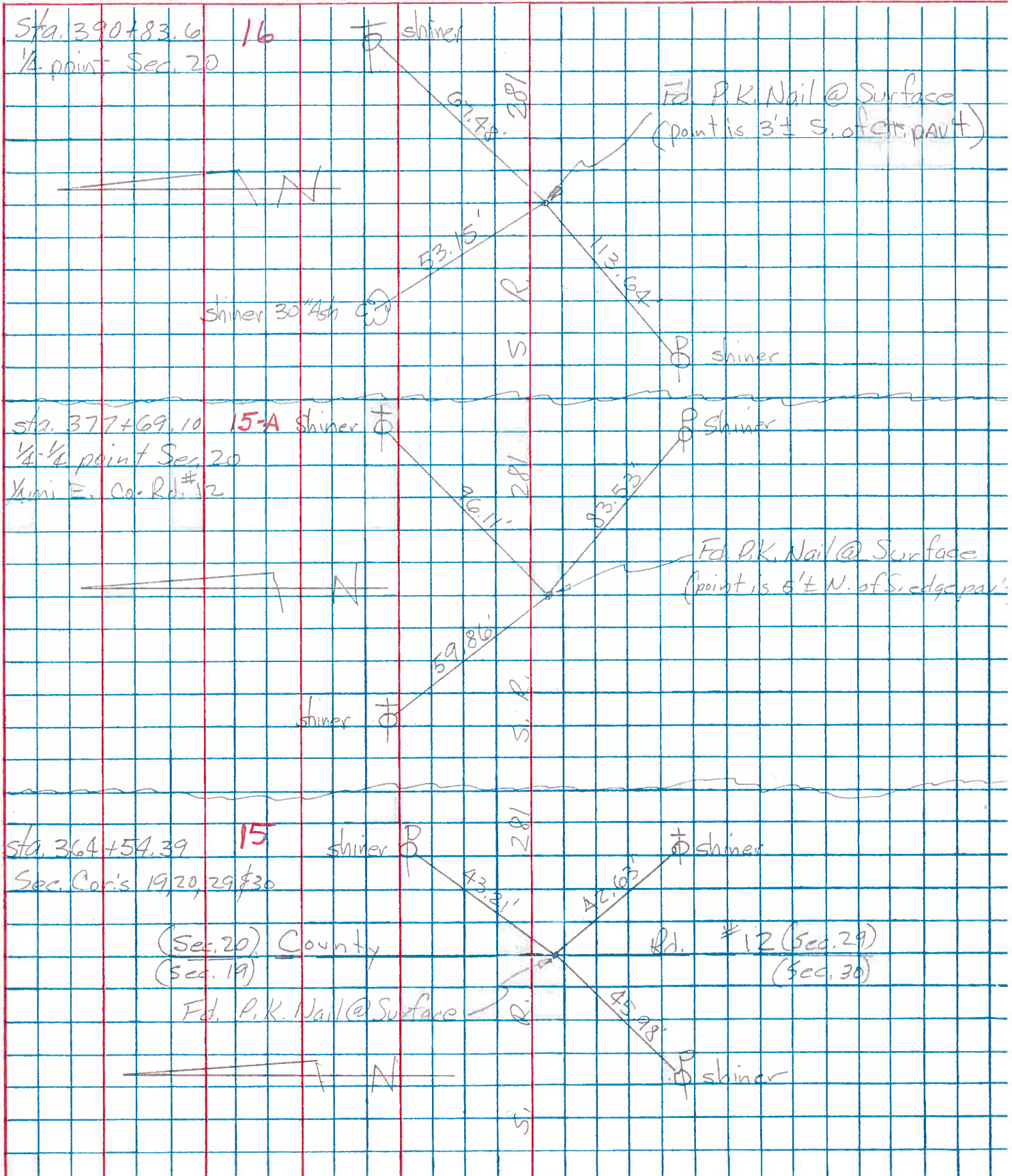
C-FOUND P.K. NAIL OVER IRON BOLT
 0.20' WEST AND 0.33' SOUTH OF
 TOP CENTER OF STONE (8"x11"x13")
 18" BELOW ROAD SURFACE. REMOVED
 P.K. NAIL AND IRON BOLT. PLACED
 CENTER PUNCHED RAILROAD SPIKE
 ON SURFACE OVER TOP CENTER
 OF STONE. P.K.'S 6' S. & W.

STONE IS 7.5' NORTH OF SOUTH EDGE OF 18' PAVEMENT
 53.06⁰⁹ N.W. TO P.K. NAIL IN ^{SE}/₅ 36" ASH

FD. R.R. SPIKE 1 1/2" DEEP
 2.2' S. OF &
 7.8 TO S. E. P.
 12-7-81
 40° S.W.H.

PERSONNEL	TITLE	PERSONNEL	TITLE	COUNTY	DATE	WEATHER	TEMP.
Tomasic				HENRY	Nov. 18, 1974		
Neuser				281			
Van yo				SEC. MONROE TWP.			
Granata							

DESCRIPTION	LEFT	CENTER LINE	RIGHT	JOB NO.
-------------	------	-------------	-------	---------



PERSONNEL	TITLE	PERSONNEL	TITLE

COUNTY Henry DATE 11-29-57
 # 281 10-24-60
 S. R. _____ WEATHER _____
 SEC. "J" TEMP. _____

DESCRIPTION	LEFT	CENTER LINE	RIGHT	JOB NO.
#21	1/4 COR. stone R.R. SpK		67.46' N.E. To S.W. side T. Pole 45.0' N. To S. side 1" Gas Pipe 45.0' S. To N. " 1" " " 54.35' N.W. To 60d spk. in S.E. side 53.43 Shi. 24" Ash .34 30"	
	(16)	39.46 S. Steel Anchor Post	39.46 S. To iron A. Post	
#22	1/4 1/4 COR. stone R.R. SpK Fd. Iron Bolt		54.60' 55.28' N.E. To 60d spk in tel. Pole 71.40' N. To 60d spk. in 16" Elm 44.90' 45.0' S. To 1" Gas pipe 59.20' S. To witness stone 50.58 S.W. Shi. P. Pole 52	
	(16-A)			
#23	Sec. COR. stone S.E. COR. Sec. 20 R.R. SpK	(gone)	84.50' S.W. To 60d spk. in P. Pole 53.05 66.75' N.W. To 60d " " T. Pole 84.50' S.E. To 60d in 12" Cotton wood 42.66' S.E. To "x" E. end 54" conc. p. pipe } Plum. 49.67 S.W. To "x" W. end 54" " " }	
	(17)			
#24	1/4 COR. stone R.R. SpK		27.44' S.E. To chiseled "X" on Hdwl' Plum 27.14' S. To chiseled "X" N.W. COR. C.B Plum 28.82' N. To chiseled "X" S.W. COR. C.B	
	(18)			
#25	1/4-1/4 COR. R.R. SpK		40.70' 40.78' S. To spk in COR. Post 67.62' S.W. To spk in Power Pole 70.30' N.E. To spk in Tel. Pole 94.73' N.W. To spk in Tel. Pole .70	
	(18-A)			
#26	Sec. COR. Sec. 21 R.R. SpK		40.79' N.E. To Headless spk. E. side Tel. Pole 26.50' S.W. To ⊗ on N.E. COR. Culvert. Plum 34.80 N.W. To ⊗ on S.E. COR. Culvert. 35.30 31.45 S.W. To "x" on N.W. COR. Culvert	
	(19)			