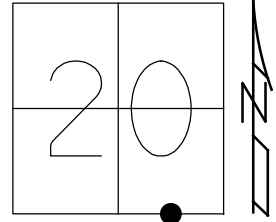


O.D.O.T. DISTRICT 2 SURVEY OFFICE (USE ONLY)

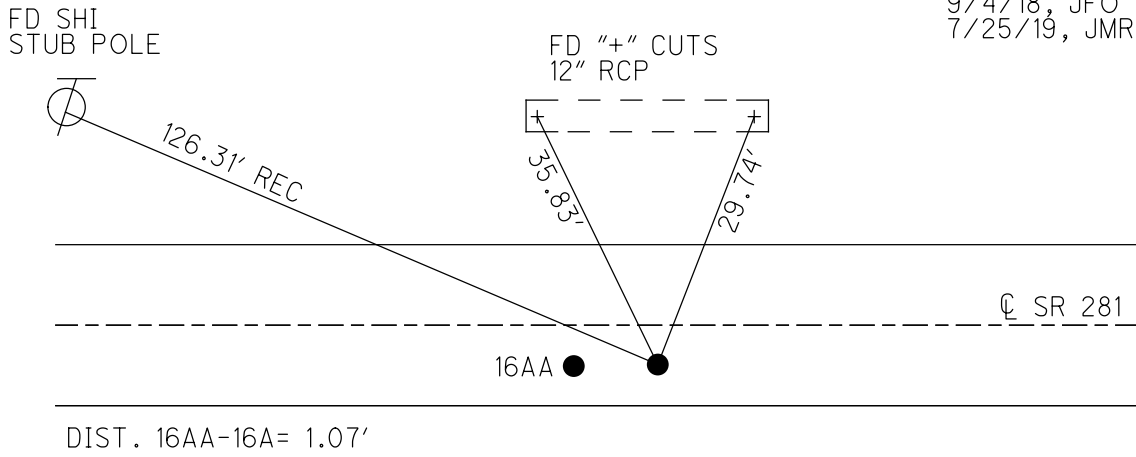
PERSONNEL _____ REFERENCE NO. 16 A SHEET 7 OF 34
 NOTES HUSS DATE 8/18/98 ROUTE SR 281
 H.C. BARNHISEL WEATHER FAIR COUNTY HENRY
 R.C. ROUSOS TEMP. 82° TOWNSHIP MONROE
 SECTION 20
 DWG BY NIESE PID CHIP_2 T 4 N R 7 E

TYPE MONUMENT SM.R.R.SPIKE
 ON SURFACE - ~~BELOW~~ ON
 OFFSET CL PAVEMENT 4.4' ~~±~~ : RT
6.9' TO RT EDGE PAVEMENT
 STATION: 403+83



HORZ.DATUM: NAD83(2011) GEOID: 2012A
 GRID: NORTHING: 592785.261 EASTING: 1534176.568

RECORD:
 STA 404+12.25
 1/4-1/4 SEC 20
 FD SM.R.R.SPIKE
 8/18/98, MB
 SET P.K./WASHER
 9/28/98, MB
 FD P.K.NAIL
 REF16A
 9/4/18, JFO
 7/25/19, JMR



NOTE:
 FD MAG NAIL
 ORIGIN UNKNOWN
 REFAA16
 N: 592785.291
 E: 1534175.495

O.D.O.T. DISTRICT 2 SURVEY OFFICE

PERSONNEL

REFERENCE NO. 16A

SHEET 9 OF 34

NOTES Huss

H.C. Barnhiser

DATE 8-18-98

ROUTE SR 281

R.C. Rouss

WEATHER Fair

COUNTY HENRY

TEMP. +82°F

TOWNSHIP Monroe

SECTION 20

T4 N R 7 E

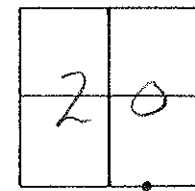
TYPE MONUMENT Small RR spike

ON SURFACE - ~~BELOW~~ Surface

LEFT - ~~Q~~ PAV'T. - RIGHT 4.4'

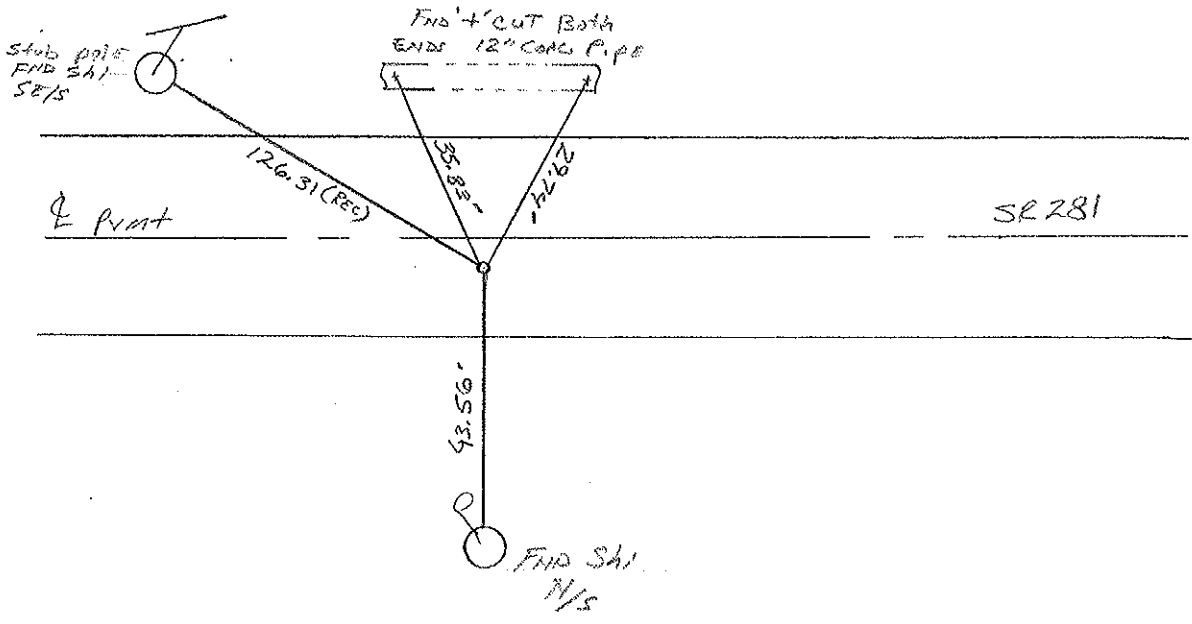
6.9' TO RT EDGE PAVEMENT

S.L.M. 12+32 @ .3 (SLK) 403+83 (SLM)



RECORD:
Sta 404+12.25
1/4-1/4 SEC 20

RESET PK & WASHER
9-28-98
MB



Drawn by TR

O.D.O.T. DISTRICT 2 SURVEY OFFICE

PERSONNEL

REFERENCE NO. 16-A

SHEET 9 OF

NOTES SOCKMAN

H.C. RARNHISEL

R.C. LOEWERKE

DATE 8-12-87

WEATHER CLEAR

TEMP. +82

ROUTE SR 281

COUNTY HENRY

TOWNSHIP MONROE

SECTION 20

T4 N R 7 E

TYPE MONUMENT P.K. / WASHER

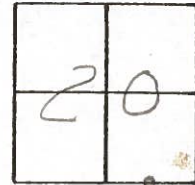
~~ON SURFACE~~ - BELOW 2"

~~LEFT -~~ PAV'T. - RIGHT 4.3

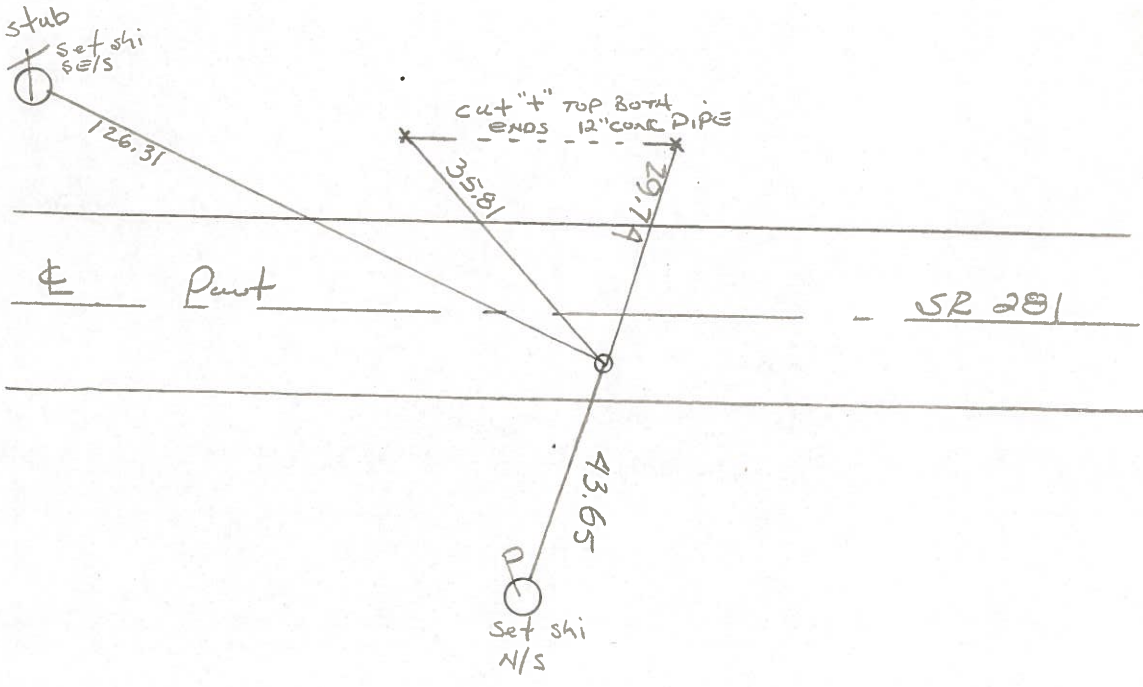
5.4 TO R + EDGE PAVEMENT

S.L.M. 403 + 83

Set Sm. R.R.
Spike
9-2-87



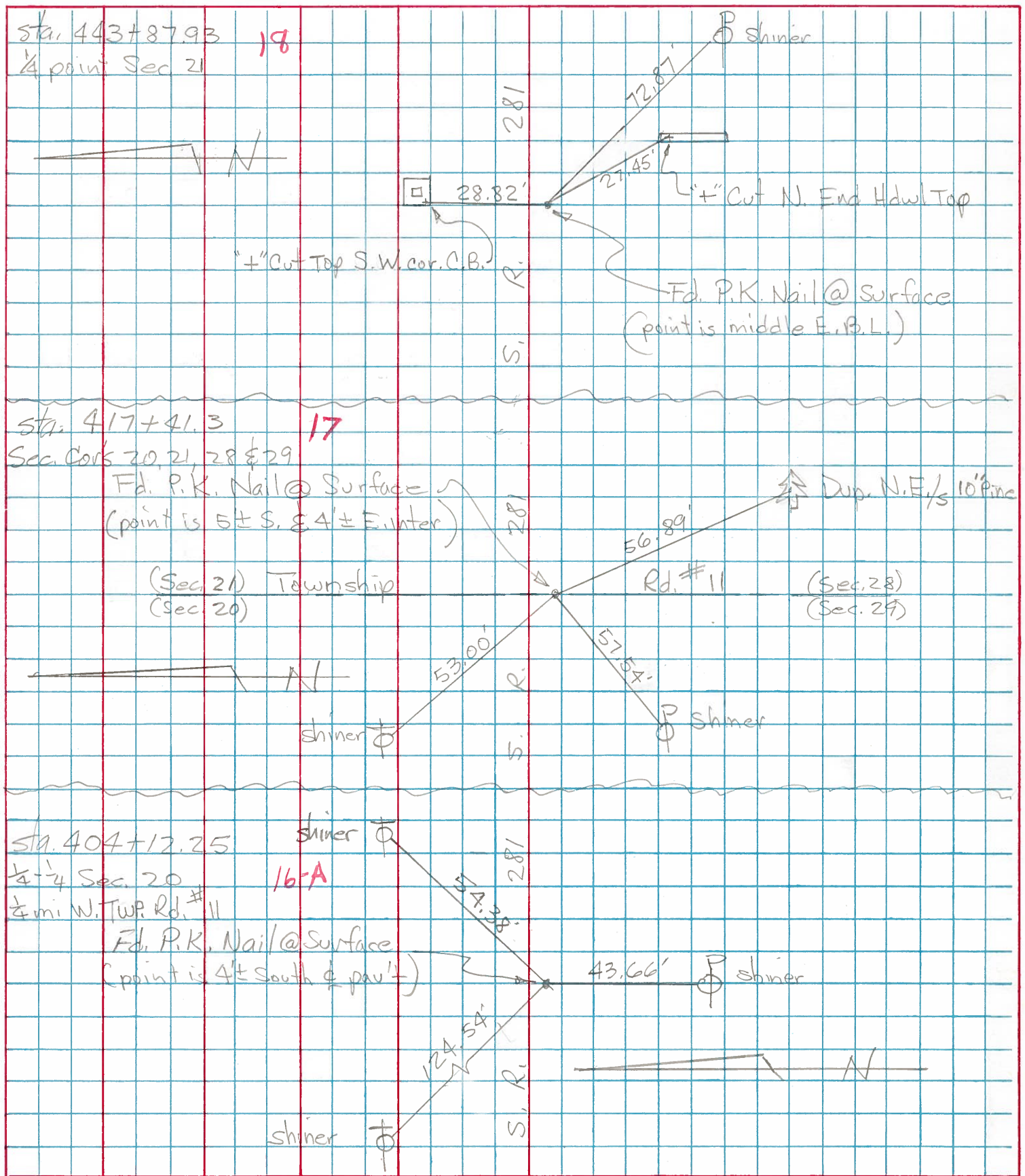
Record:
Sta. 404 + 12.25
1/4 - 1/4 Sec. 20



PERSONNEL TITLE PERSONNEL TITLE
 Tomsic _____
 Neuser _____
 Vanvo _____
 Granata _____

COUNTY HENRY DATE Nov. 18, 1974
 S. R. 281 WEATHER _____
 SEC. MOWDIE TWP. TEMP. _____

DESCRIPTION LEFT CENTER LINE RIGHT JOB NO.



PERSONNEL TITLE PERSONNEL TITLE

COUNTY Henry

DATE 11-29-57

S. R. #281

10-24-60

SEC. "J"

WEATHER

TEMP.

DESCRIPTION

LEFT

CENTER LINE

RIGHT

JOB NO.

DESCRIPTION	LEFT	CENTER LINE	RIGHT	JOB NO.
#21	1/4 COR. stone R.R. Spk		67.46' N.E. To S.W. side T. Pole 45.0' N. To S. side 1" Gas Pipe 45.0' S. To N. " " " " 54.35' N.W. To 60 spk. in S.E. side 53.43 shi. 24" Ash .34 30"	
	(16)	39.46 S. Steel Anchor Post	39.46 S. To iron A. Post	
#22	1/4 1/4 COR. stone R.R. Spk. Fd. Iron Bolt		54.60' N.E. To 60 spk intel. P. 55.28' N. To 60 spk. in 16" Elm 71.40' S. To 1" Gas pipe 46.90' S. To Witness stone 59.20' S.W. shi. P. Pole 50.58 52	
	(16-A)			
#23	Sec. COR. stone S.E. COR. Sec. 20 R.R. Spk.	(gone)	84.50' S.W. To 60 spk. in P. Pole 53.05 62.75' N.W. To 60 " " T. Pole 84.50' S.E. To 60 in 12" Cottonwood 42.66' S.E. To "X" E. end 54" conc. pipe } Plum 49.67 S.W. To "X" W. end 54" " " }	
	(17)			
#24	1/4 COR. stone R.R. Spk.		27.44' S.E. To chiseled "X" on Hdw Plum 27.14' S. To chiseled "X" N.W. COR. C. Plum 28.82' N. To chiseled "X" S.W. COR. C.	
	(18)			
#25	1/4-1/4 COR. R.R. Spk.		40.70' 40.78' S. To spk in COR. Post 67.62' S.W. To spk in Power Pole 70.30' N.E. To spk in Tel. Pole 94.73' N.W. To spk in Tel. Pole .70	
	(18-A)			
#26	Sec. COR. Sec. 21 R.R. Spk.		40.79' N.E. To Headless spk. E. Side Tel. Pole 26.50' S.W. To ⊗ on N.E. COR. Culvert. Plum 34.80 N.W. To ⊗ on S.E. COR. 35.30 Culvert? 31.45 S.W. To "X" on N.W. COR. Culvert?	
	(19)			