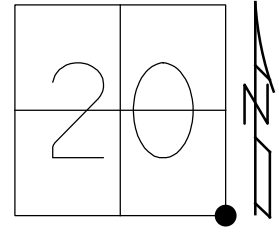


O.D.O.T. DISTRICT 2 SURVEY OFFICE (USE ONLY)

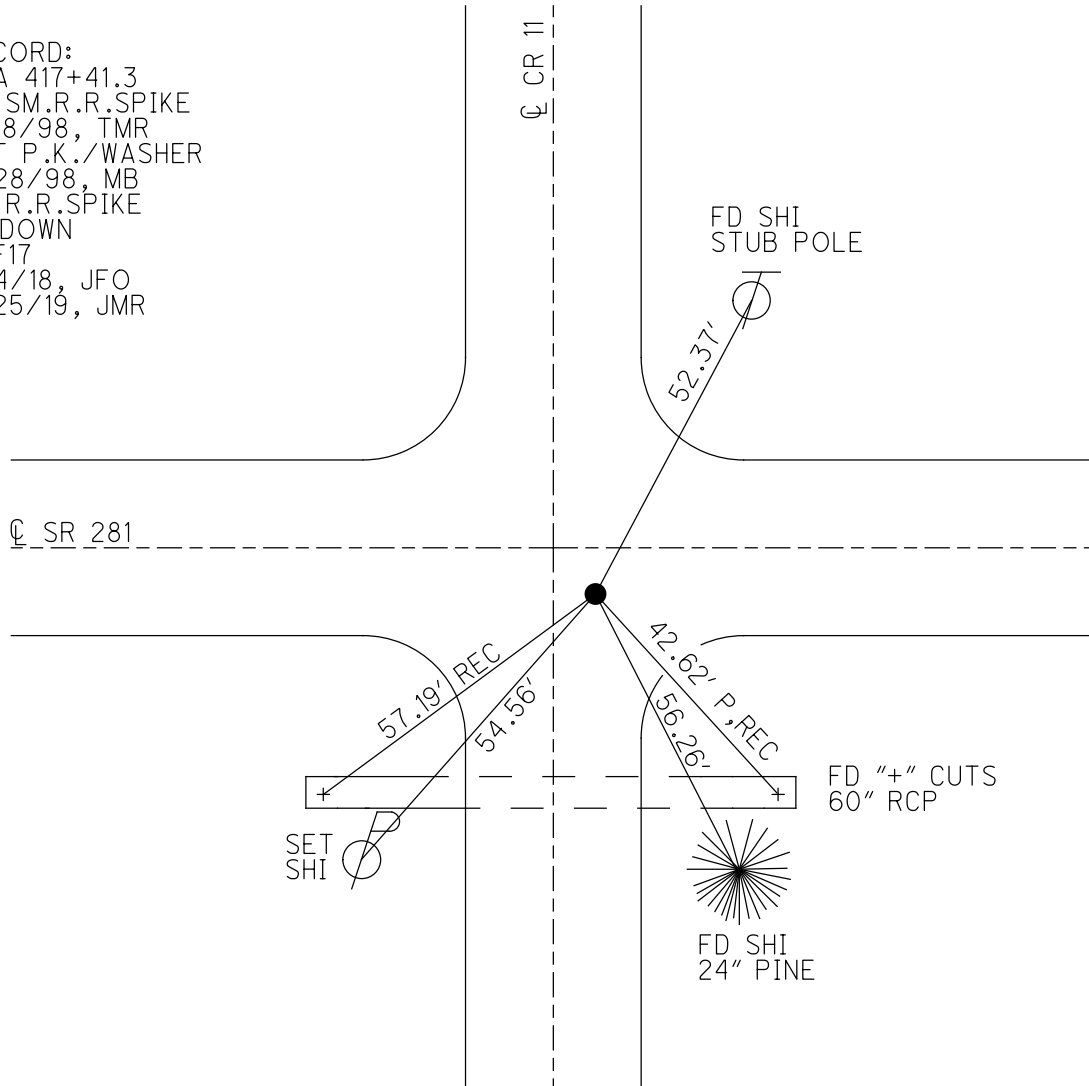
PERSONNEL \_\_\_\_\_ REFERENCE NO. 17 SHEET 8 OF 34  
 NOTES MILLER DATE 9/4/18 ROUTE SR 281  
 H.C. O'DONNELL WEATHER SUNNY COUNTY HENRY  
 R.C. MILLER TEMP. 90° TOWNSHIP MONROE  
 SECTION 20  
 DWG BY NIESE PID CHIP\_2 T 4 N R 7 E

TYPE MONUMENT SM.R.R.SPIKE  
~~ON SURFACE~~ - BELOW 3"  
 OFFSET  $\odot$  PAVEMENT 5.8' ~~LT~~ : RT  
- TO - EDGE PAVEMENT  
 STATION: 417+12



HORZ.DATUM: NAD83(2011) GEOID: 2012A  
 GRID: NORTHING: 592758.493 EASTING: 1535504.093

RECORD:  
 STA 417+41.3  
 FD SM.R.R.SPIKE  
 8/18/98, TMR  
 SET P.K./WASHER  
 9/28/98, MB  
 FD R.R.SPIKE  
 3" DOWN  
 REF17  
 9/4/18, JFO  
 7/25/19, JMR



# O.D.O.T. DISTRICT 2 SURVEY OFFICE

PERSONNEL \_\_\_\_\_

REFERENCE NO. 17

SHEET 10 OF 34

NOTES Huss

H.C. Barnhiser

R.C. Roussas

DATE 8-18-98

WEATHER Fair

TEMP. +82° F

ROUTE SR 281

COUNTY HENRY

TOWNSHIP MONROE

SECTION 21

T 4 N R 7 E

TYPE MONUMENT sm. RR. SPIKE

ON SURFACE - ~~BELOW~~ SURFACE

~~LEFT~~ - CL PAV'T. - RIGHT 5.8 PM

TO EDGE PAVEMENT 4.2' E of CL Rd. North

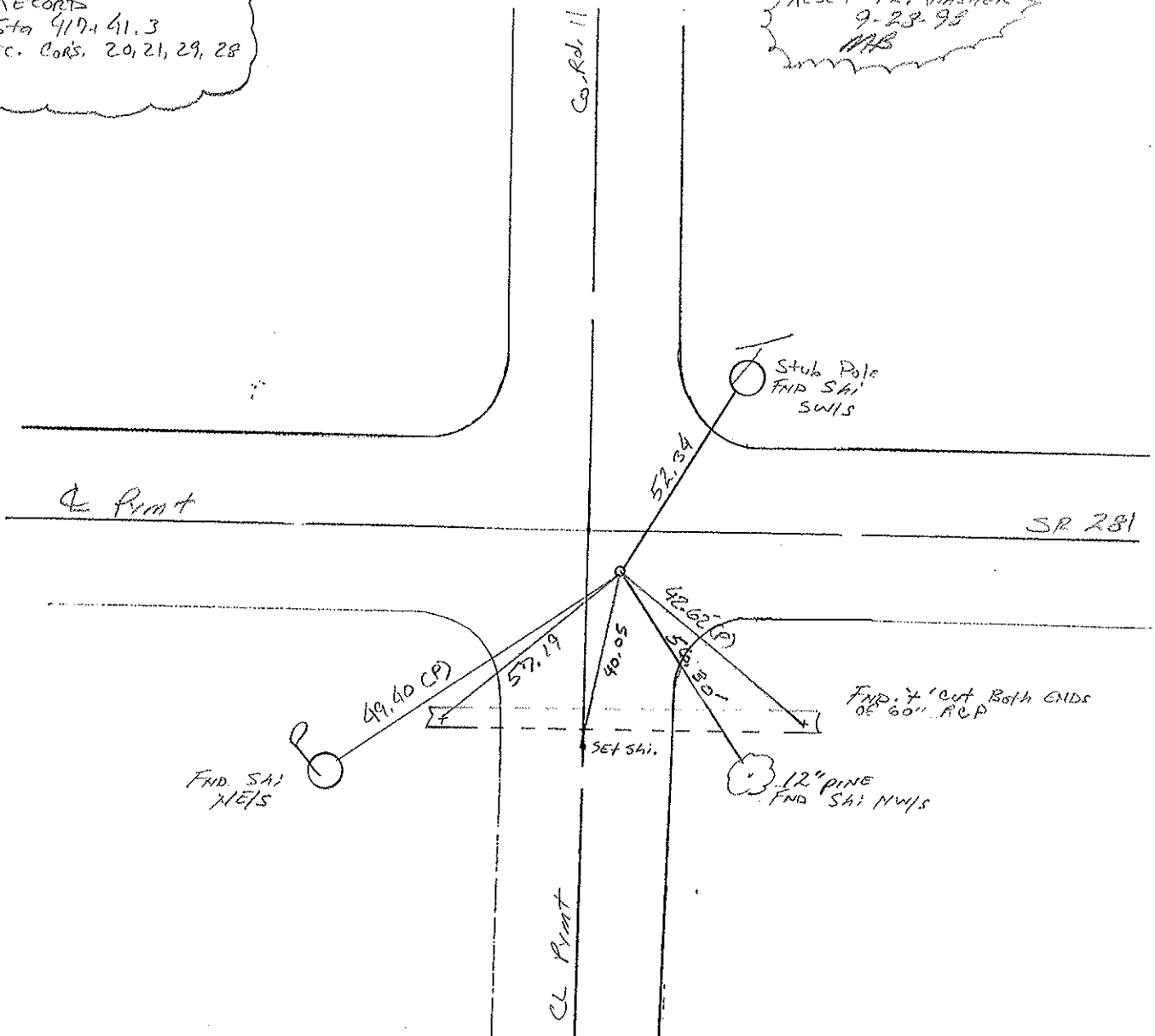
S.L.M. 12.727.43 (SLX), 417+12 (SLW)

20	21
29	28



RECORD  
Sta 417+41.3  
Sec. Cors. 20, 21, 29, 28

RESET P&W WASHER  
9-23-98  
MB



DRAWN BY TR

# O.D.O.T. DISTRICT 2 SURVEY OFFICE

PERSONNEL \_\_\_\_\_

REFERENCE NO. 17

SHEET 10 OF \_\_\_\_\_

NOTES Sockman

H.C. BARINHISEL

R.C. LOHRKE

DATE 8-12-87

WEATHER CLEAR

TEMP. +82

ROUTE SR 281

COUNTY HENRY

TOWNSHIP MONROE

SECTION 21

T4 NR 7 E

TYPE MONUMENT P.K. Nail

ON SURFACE - BELOW YES

LEFT- & PAV'T. - RIGHT 5.8

TO EDGE PAVEMENT 4.2' E. of Co. Rd. North

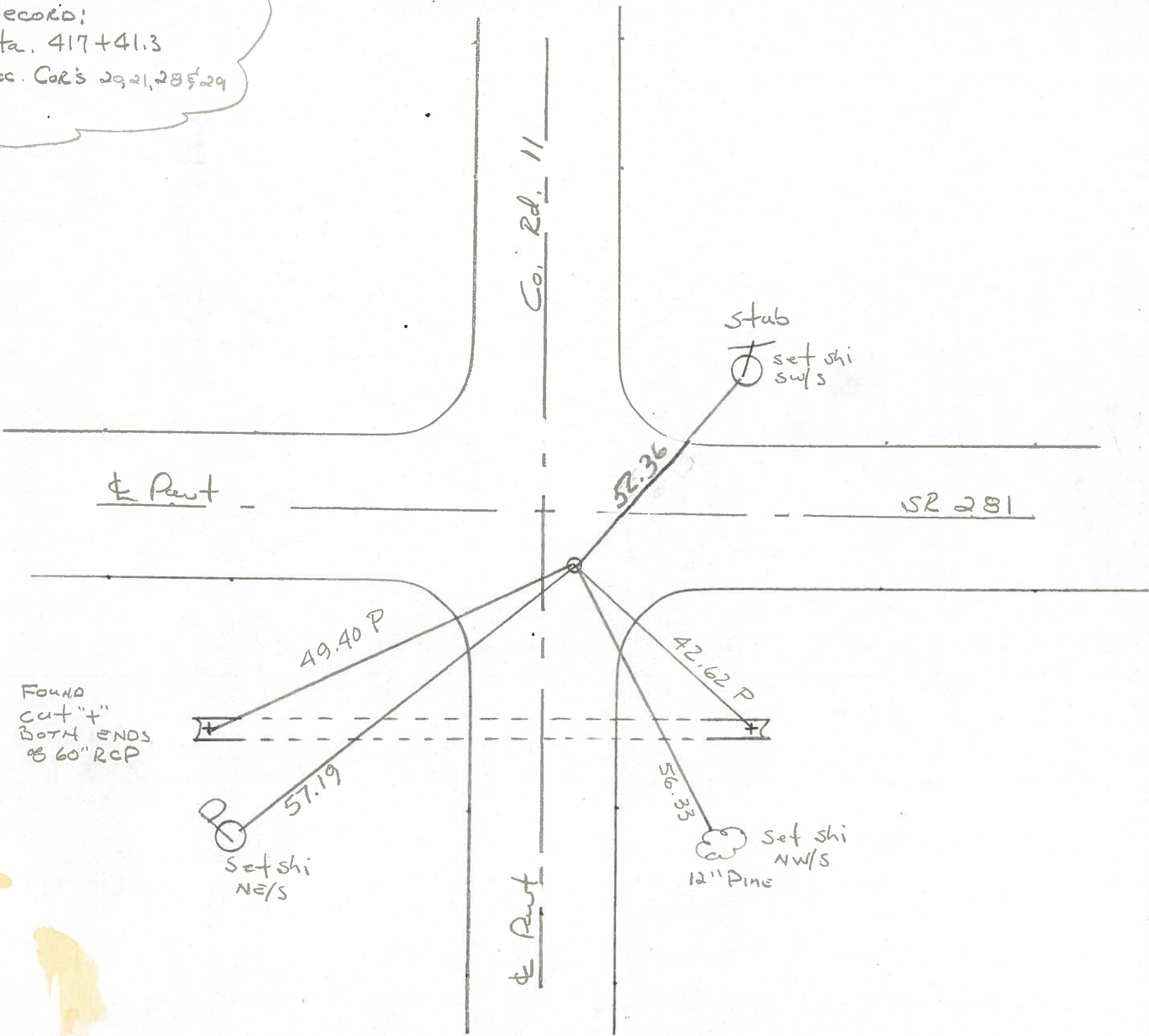
S.L.M. 417+12

Set Sm. RR.  
Spike  
9-2-87

20	21
29	28



Record:  
sta. 417+41.3  
Sec. Cor's 29, 21, 28, 5, 29

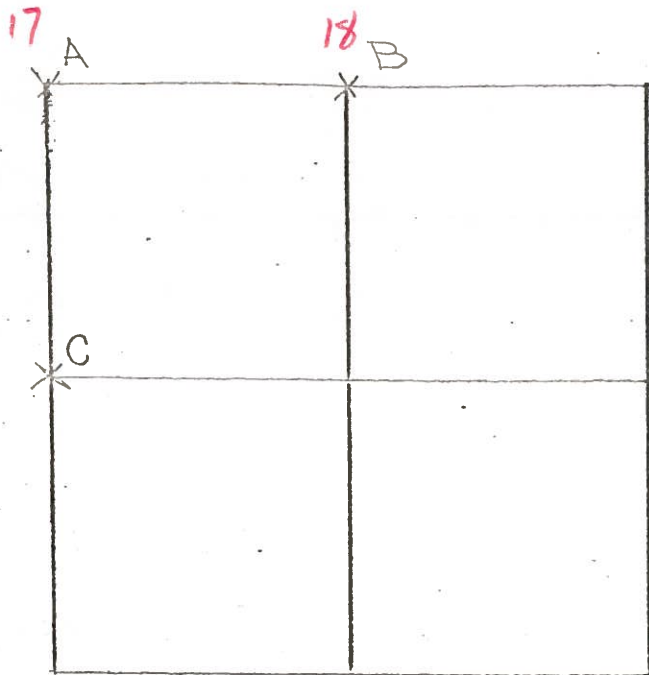


COUNTY HENRY S.R. 281

T 4 N , R 7 E

TOWNSHIP MONROE

SECTION 28



6-28-79 R.W. J.J. G.M.

A- FOUND P.K. OVER RAILROAD SPIKE  
 0.25' NORTH AND 0.15' EAST OF  
 TOP CENTER OF STONE (11" x 14" x 12")  
 12" BELOW ROAD SURFACE. REMOVED  
 P.K. AND RAILROAD SPIKE. PLACED  
 CENTER PUNCHED RAILROAD SPIKE  
 ON SURFACE OVER TOP CENTER  
 OF STONE. P.K.'s 6' S. & W.

STONE IS 4.5' NORTH OF SOUTH EDGE OF 18' PAVEMENT.

~~53.06'~~ N.W. TO SHINER  $\frac{SE}{S}$   $\perp$

~~42.57'~~ <sup>65'</sup> S.E. TO "+" IN CONCRETE PIPE

~~49.42'~~ S.W. TO "+" IN CONCRETE PIPE

~~57.23'~~ <sup>21'</sup> S.W. TO SHINER  $\frac{NE}{S}$   $\perp$   $\perp$

FD. P.K. @ SURFACE  
 5.8' S. OF E  
 OK - 12-7-81  
 40°  
 S.W.H.

6-28-79 R.W. J.J. G.M.

B- FOUND P.K. OVER RAILROAD SPIKE, OVER IRON BOLT 0.10' SOUTH  
 AND 0.10' WEST OF HIGH POINT OF STONE (8" x 10" x 11") 18" BELOW  
 ROAD SURFACE. REMOVED P.K., RAILROAD SPIKE AND IRON BOLT. PLACED  
 CENTER PUNCHED RAILROAD SPIKE ON SURFACE OVER HIGH POINT  
 OF STONE. P.K.'s 6' N. & W.

FD. P.K. @ SURFACE  
 5.4' S. OF E - 4.5' N. & S.E.P.  
 12-7-81  
 40° S.W.H.

STONE IS 4.1' NORTH OF SOUTH EDGE OF 18' PAVEMENT.

~~28.66'~~ <sup>73'</sup> N. TO "+" IN S.W. COR. CONC. CATCH BASIN

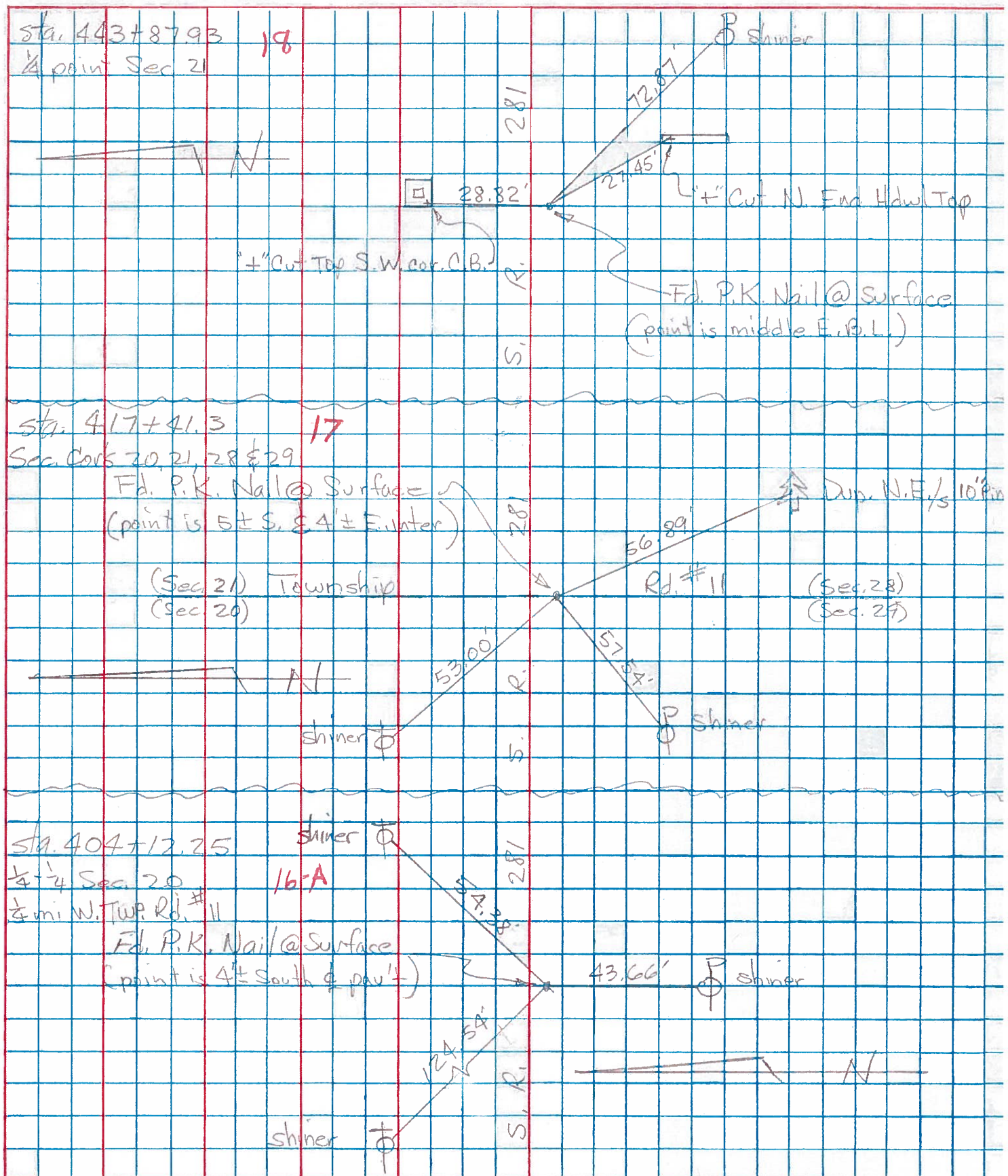
~~72.77'~~ E.S.E. TO SHINER  $\frac{NW}{S}$   $\perp$

~~27.43'~~ S.E. TO "+" IN NORTH END OF CONC. HEADWALL.

PERSONNEL TITLE PERSONNEL TITLE  
 Tomasic \_\_\_\_\_  
 Nencer \_\_\_\_\_  
 Vanja \_\_\_\_\_  
 Granata \_\_\_\_\_

COUNTY HENRY DATE Nov. 18, 1971  
 S. R. 281 WEATHER \_\_\_\_\_  
 SEC. MAURDIE TWP. TEMP. \_\_\_\_\_

DESCRIPTION LEFT CENTER LINE RIGHT JOB NO.





PERSONNEL TITLE PERSONNEL TITLE

COUNTY Henry DATE 11-29-57

S. R. #281 WEATHER 10-24-60

SEC. "J" TEMP.

DESCRIPTION LEFT CENTER LINE RIGHT JOB NO.

#21	1/4 cor. stone R.R. Spk		67.46' N.E. To SW side T. Pole 45.0' N. To S. side 1" Gas Pipe 45.0' S. To N. " " " " 39.46 S. Steel Anchor Post 54.35' N.W. To <del>God spk.</del> in S.E. side shi. 53.43 .34 24" Ash 30"		
	(16)		39.46 S. To iron A. Post		
#22	1/4 1/4 cor. stone R.R. Spk. Fd. Iron Bolt		54.60' 55.28' N.E. To God spk intel. P. 71.40' N. To God spk. in 16" Elm 44.90' 45.8' S. To 1" Gas pipe 59.20' S. To Witness stone 50.58 S.W. Shi. P. Pole 52		
	(16-A)				
#23	Sec. Cor. Stone S.E. Cor. Sec. 20 R.R. Spk.	(gone)	84.50' S.W. To God spk. in P. Pole 53.05' 62.75' N.W. To God " " T. Pole 84.50' S.E. To 60° in 12" Cotton wood 42.66' S.E. Tbx " E. end 54" conc. p. pipe } Plum 49.67 S.W. To "X" W. end 54" " " }		
	(17)				
#24	1/4 cor. stone R.R. Spk.		27.44' S.E. To chiseled "X" on Hdw Plum 27.14' S. To chiseled "X" N.W. cor. c. Plum 28.82' N. To chiseled "X" S.W. cor. c.		
	(18)				
#25	1/4-1/4 cor. R.R. Spk.		40.70' 40.78' S. To spk in cor. Post 67.62' S.W. To spk in Power Pole 70.30' N.E. To spk in Tel. Pole 94.73 .70 N.W. To spk in Tel. Pole		
	(18-A)				
#26	Sec. Cor. Sec. 21 R.R. Spk.		40.79' N.E. To Headless spk. E. side Tel. Pole 26.50' S.W. To ⊗ on N.E. cor. Culvert. Plum 34.80 N.W. To ⊗ on S.E. cor. 35.30 Culvert 31.45 S.W. To "X" on N.W. cor. Culvert		
	(19)				