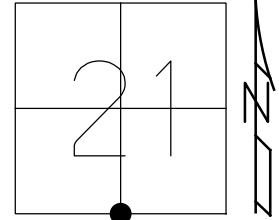


O.D.O.T. DISTRICT 2 SURVEY OFFICE (USE ONLY)

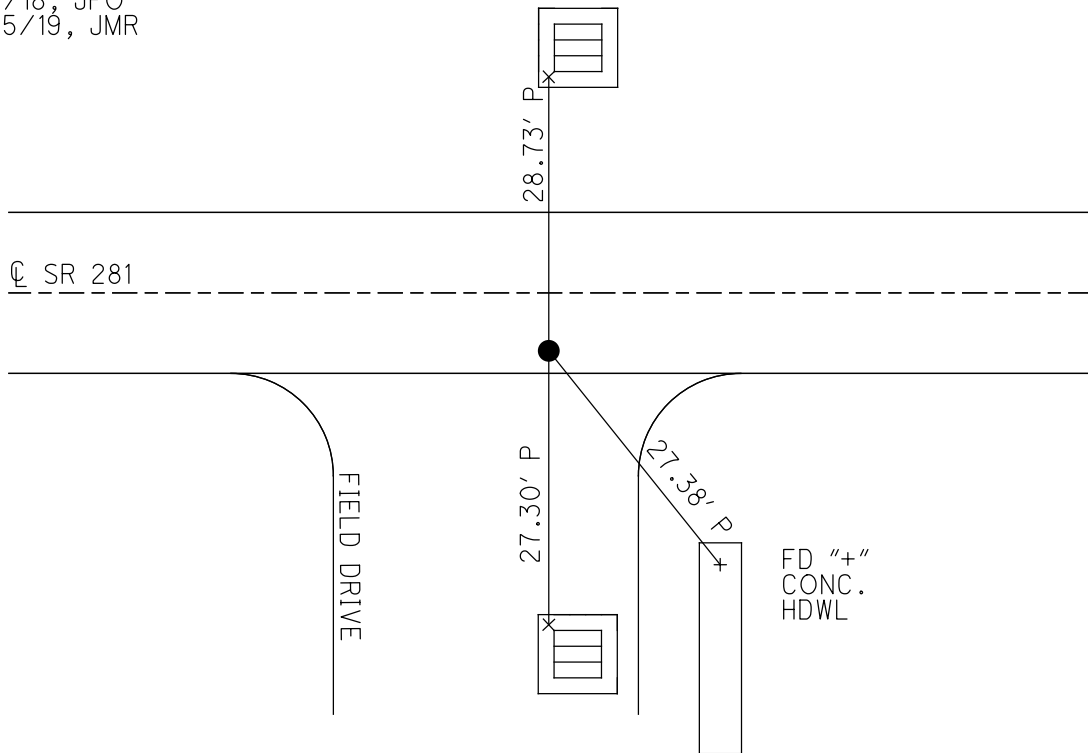
PERSONNEL \_\_\_\_\_ REFERENCE NO. 18 SHEET 9 OF 34  
 NOTES HUSS DATE 8/18/98 ROUTE SR 281  
 H.C. BARNHISEL WEATHER FAIR COUNTY HENRY  
 R.C. ROUSOS TEMP. 82° TOWNSHIP MONROE  
 DWG BY NIESE PID CHIP\_2 SECTION 21  
 T 4 N R 7 E

TYPE MONUMENT SM.R.R.SPIKE  
 ON SURFACE - ~~BELOW~~ ON  
 OFFSET  $\varnothing$  PAVEMENT 5.3' ~~LT~~ : RT  
5.4' TO RT EDGE PAVEMENT  
 STATION: 443+59



HORIZ.DATUM: NAD83(2011) GEOID: 2012A  
 GRID: NORTHING: 592723.355 EASTING: 1538149.973

RECORD:  
 STA 443+87.93  
 FD SM.R.R.SPIKE  
 8/18/98, MB  
 SET P.K./WASHER  
 9/28/98, MB  
 FD P.K.NAIL  
 REF18  
 9/4/18, JFO  
 7/25/19, JMR



# O.D.O.T. DISTRICT 2 SURVEY OFFICE

PERSONNEL \_\_\_\_\_

REFERENCE NO. 18

SHEET 11 OF 34

NOTES Huss

H.C. Barnhiser

R.C. Rouss

DATE 8-18-98

WEATHER Fair

TEMP. +82°F

ROUTE SR281

COUNTY Henry

TOWNSHIP Monroe

SECTION 21

T4 N R 7 E

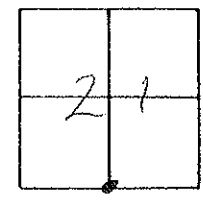
TYPE MONUMENT Sm. RR spike

ON SURFACE - ~~BELOW~~ Surface

~~LEFT - & PAV'T.~~ - RIGHT 5.3 FT

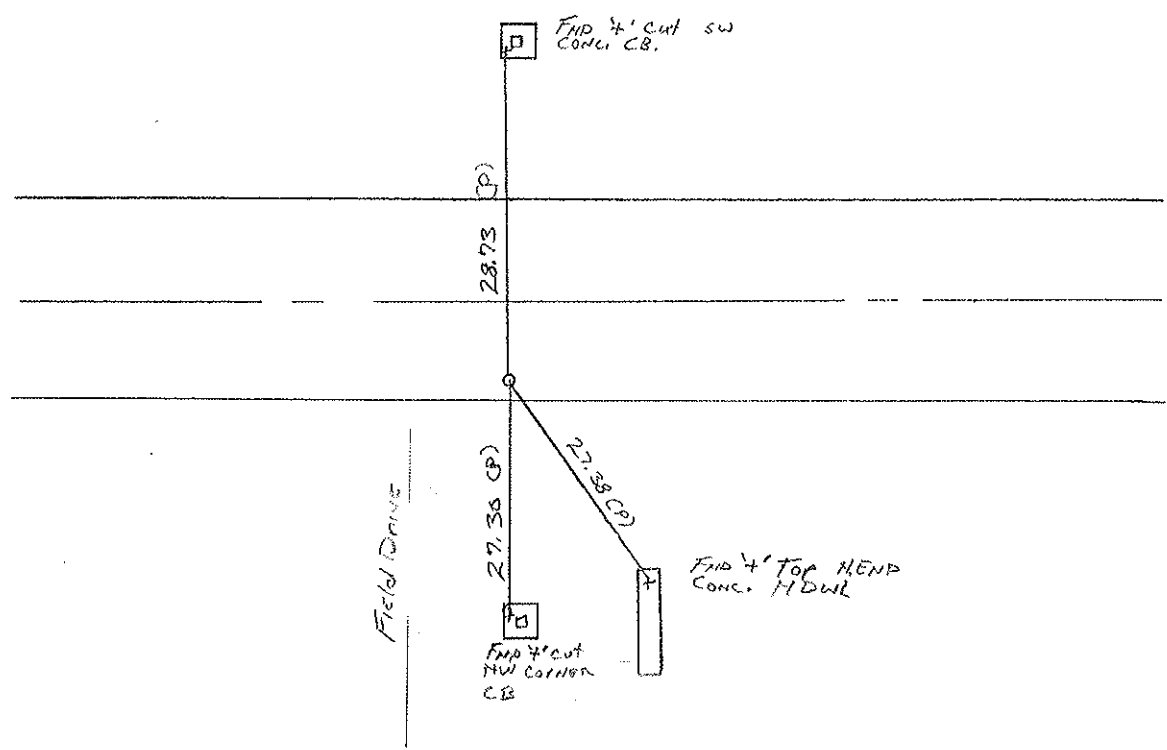
5.4 TO RT EDGE PAVEMENT

S.L.M. SLK 13+529.29, sta 443+59 sLm



RECORD:  
Sta 443.89, 93  
1/4 Pt Sec. 21

RESET PK & Washer  
9-25-98  
MB



DRAWN BY TR

# O.D.O.T. DISTRICT 2 SURVEY OFFICE

PERSONNEL

REFERENCE NO. 18

SHEET 11 OF     

NOTES Sackman

H.C. BARNHISEL

R.G. LOHRKE

DATE 8-12-87

WEATHER CLEAR

TEMP. + 62

ROUTE SR 281

COUNTY HENRY

TOWNSHIP MOORE

SECTION 21

T4 NR 7 E

TYPE MONUMENT P.K. nail

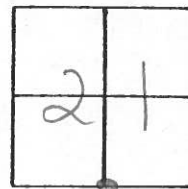
ON SURFACE - ~~BELOW~~ YES

~~LEFT- & PAV'T.~~ - RIGHT S.I

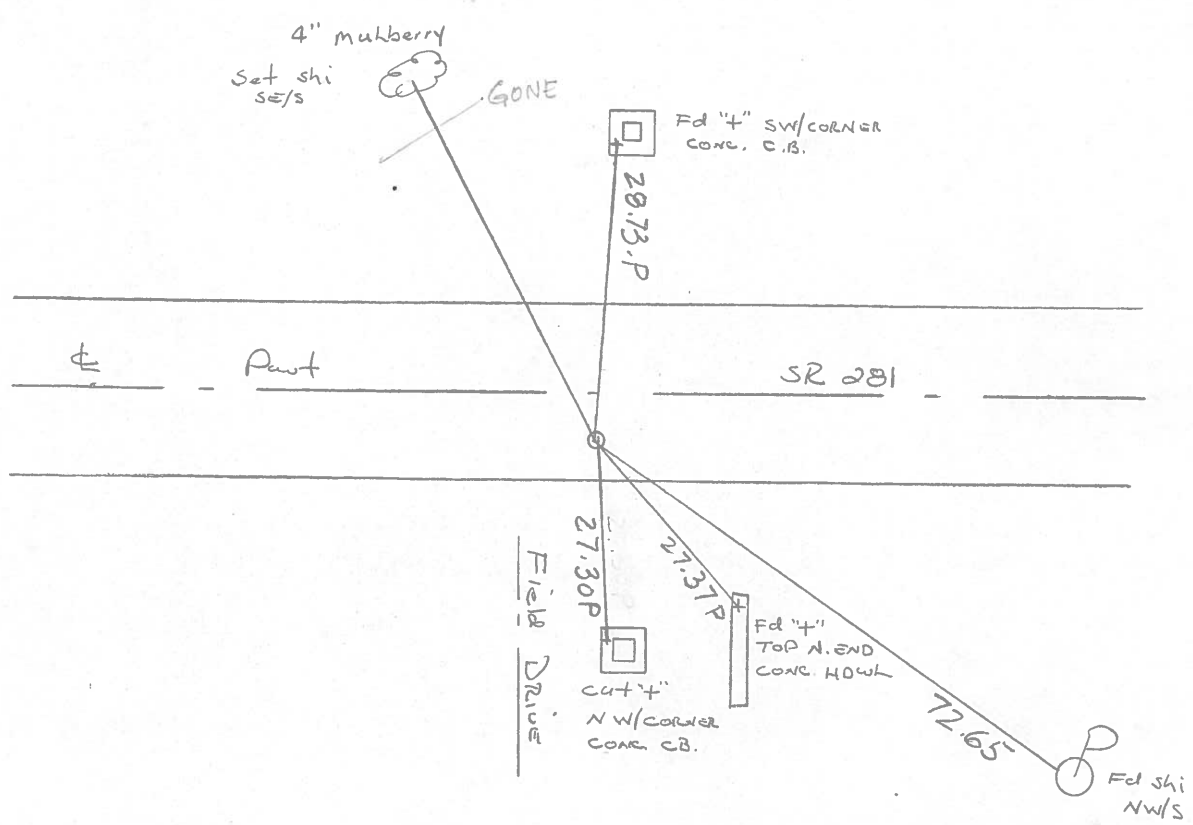
4.6 TO R+EDGE PAVEMENT

S.L.M. 443 + 59

*Set Sm. RR,  
SPIKE  
9-2-87*



Records:  
sta. 443+87.93  
1/4 point sec 21

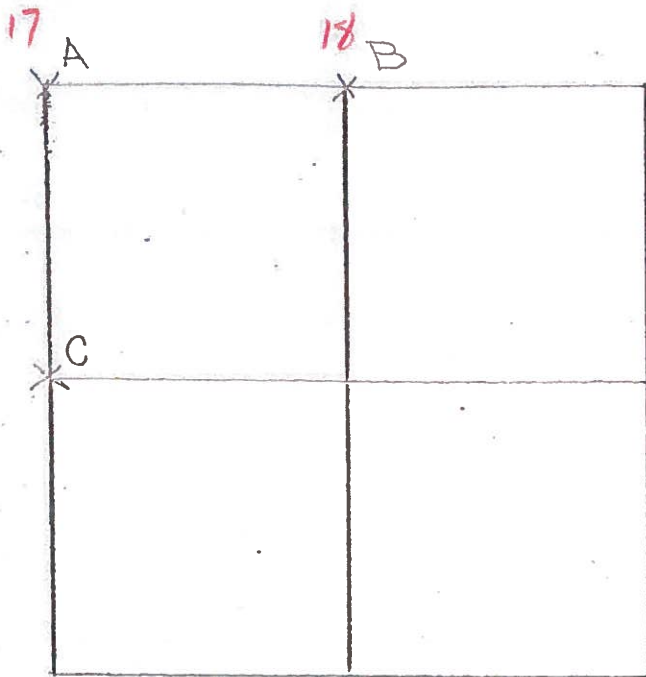


COUNTY HENRY S.K. 281

T 4 N , R 7 E

TOWNSHIP MONROE

SECTION 28



6-28-79 R.W. J.J., G.M.

A- FOUND P.K. OVER RAILROAD SPIKE  
 0.25' NORTH AND 0.15' EAST OF  
 TOP CENTER OF STONE (11" x 14" x 12")  
 12" BELOW ROAD SURFACE. REMOVED  
 P.K. AND RAILROAD SPIKE. PLACED  
 CENTER PUNCHED RAILROAD SPIKE  
 ON SURFACE OVER TOP CENTER  
 OF STONE. P.K.'s 6' S. & W.

STONE IS 4.5' NORTH OF SOUTH EDGE OF 18' PAVEMENT.

~~53.06'~~ N.W. TO SHINER <sup>SE</sup>/<sub>5</sub>

~~42.57'~~ S.E. TO "+" IN CONCRETE PIPE

~~49.42'~~ S.W. TO "+" IN CONCRETE PIPE

~~57.23'~~ S.W. TO SHINER <sup>NE</sup>/<sub>5</sub>

FD, P.K. @ SURFACE  
 5.8' S. OF E  
 OK - 12-7-81  
 40° S.W.H.

6-28-79 R.W., J.J., G.M.

B- FOUND P.K. OVER RAILROAD SPIKE, OVER IRON BOLT 0.10' SOUTH  
 AND 0.10' WEST OF HIGH POINT OF STONE (8" x 10" x 11") 18" BELOW  
 ROAD SURFACE. REMOVED P.K., RAILROAD SPIKE AND IRON BOLT. PLACED  
 CENTER PUNCHED RAILROAD SPIKE ON SURFACE OVER HIGH POINT  
 OF STONE. P.K.'s 6' N. & W.

FD, P.K. @ SURFACE  
 5.4' S. OF E - 4.5' N. & S.E.P.  
 12-7-81  
 40° S.W.H.

STONE IS 4.1' NORTH OF SOUTH EDGE OF 18' PAVEMENT.

~~28.66'~~ N. TO "+" IN S.W. COR. CONC. CATCH BASIN

72.77' E.S.E. TO SHINER <sup>NW</sup>/<sub>5</sub>

27.43' S.E. TO "+" IN NORTH END OF CONC. HEADWALL.





PERSONNEL TITLE PERSONNEL TITLE

COUNTY Henry DATE 11-29-57

S. R. #281 WEATHER 10-24-60

SEC. "J" TEMP.

DESCRIPTION LEFT CENTER LINE RIGHT JOB NO.

#21	1/4 COR. stone R.R. Spk			67.46' N.E. To S.W. side T. Pole 45.0' N. To S. side 1" Gas Pipe 45.0' S. To N. " 1" " " 39.46 S. Steel/Anchor Post 54.35' N.W. To <del>God spk.</del> in S.E. side 53.43 Shi. 24" Ash .34 30"			
		(16)		39.46 S. To iron A. Post			
#22	1/4 1/4 COR. stone R.R. Spk. Fd. Iron Bolt			54.60' 55.28' N.E. To God spk intel. P. 71.40' 91' N. To God spk. in 16" Elm 44.90' 45.8' S. To 1" Gas pipe 59.20' S. To Witness stone 50.58 S.W. Shi. P. Pole 52			
		(16-A)					
#23	Sec. Cor. Stone S.E. Cor. Sec. 20 R.R. Spk.		(gone)	84.50' S.W. To God spk. in P. Pole 53.05 62.75' N.W. To God " " T. Pole 84.50' S.E. To God in 12" Cottonwood 42.66' S.E. T8" E. end 54" conc. pipe } Plum 49.67 S.W. To "X" W. end 54" " " }			
		(17)					
#24	1/4 COR. stone R.R. Spk.			27.44' S.E. To chiseled "X" on Hdw Plum 27.14' S. To chiseled "X" N.W. Cor. C. Plum 28.82' N. To chiseled "X" S.W. Cor. C.			
		(18)					
#25	1/4-1/4 COR. R.R. Spk.			.70 40.78' S. To spk in Cor. Post 67.62' S.W. To spk in Power Pole 70.30' N.E. To spk in Tel. Pole 94.73' N.W. To spk in Tel. Pole .70			
		(18-A)					
#26	Sec. Cor. Sec. 21 R.R. Spk.			40.79' N.E. To Headless spk. E. Side Tel. Pole 26.50' S.W. To ⊗ on N.E. Cor. Culvert. Plum 34.80' N.W. To ⊗ on S.E. Cor. 35.30 Culvert 31.45 S.W. To "X" on N.W. Cor. Culvert			
		(19)					