

O.D.O.T. DISTRICT 2 SURVEY OFFICE (USE ONLY)

PERSONNEL

REFERENCE NO. 18 A

SHEET 10 OF 34

NOTES HUSS DATE 8/18/98

ROUTE SR 281

H.C. BARNHEISEL WEATHER FAIR

COUNTY HENRY

R.C. ROUSOS TEMP. 82°

TOWNSHIP MONROE

SECTION 21

DWG BY NIESE PID CHIP_2

T 4 N R 7 E

TYPE MONUMENT SM.R.R.SPIKE

ON SURFACE - ~~BELOW~~ ON

OFFSET ☉ PAVEMENT 5.0' ~~LF~~ : RT

5.4' TO RT EDGE PAVEMENT

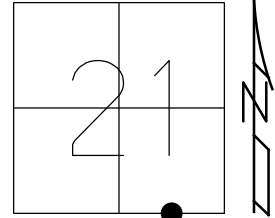
STATION: 456+88

HORZ.DATUM: NAD83(2011)

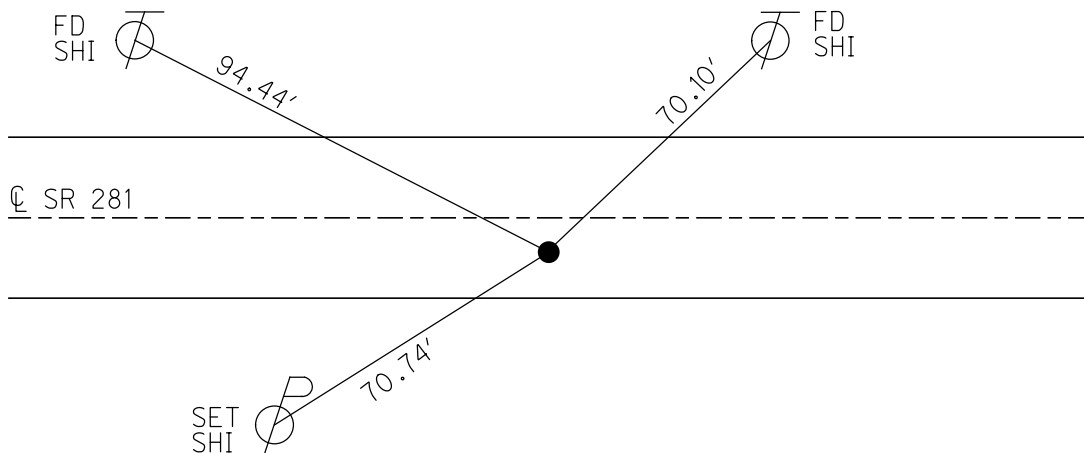
GEOID: 2012A

GRID: NORTHING: 592702.295

EASTING: 1539478.421



RECORD:
 STA 457+16.4
 1/4-1/4 POINT SEC 21
 FD SM.R.R.SPIKE
 8/18/98, MB
 SET P.K./WASHER
 9/28/98, MB
 FD P.K./WASHER
 REFA18
 9/4/18, JFO
 7/25/19, JMR



O.D.O.T. DISTRICT 2 SURVEY OFFICE

PERSONNEL

REFERENCE NO. 18-A

SHEET 12 OF 34

NOTES Huss

H.C. Bardwell

R.C. Rouss

DATE 8-18-98

WEATHER Fair

TEMP. +82°F

ROUTE SR 281

COUNTY Henry

TOWNSHIP Monroe

SECTION 21

T 4 N R 7 E

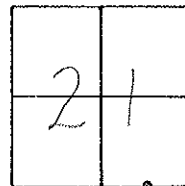
TYPE MONUMENT Small PK spike

ON SURFACE - BELOW SURFACE

LEFT-CL PAV'T. - RIGHT 5.0' R+

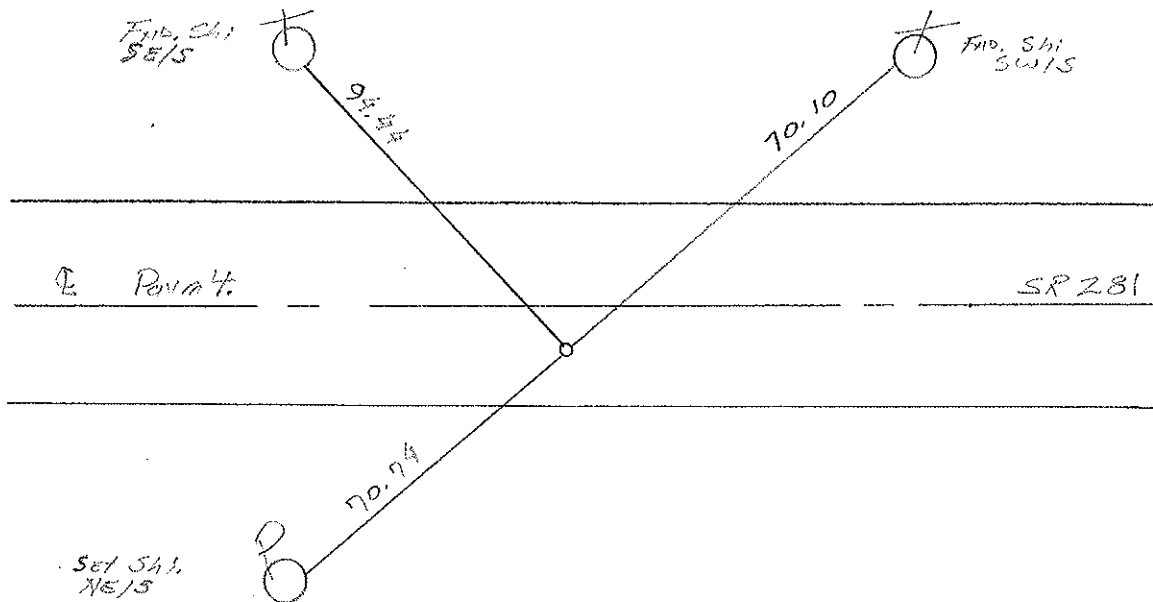
5.4' TO R+ EDGE PAVEMENT

S.L.M. 13+935.98 slk (sta: 456+88 slm)



RECORD:
 Sta. 457+16.4
 1/4-1/4 Point Sec 21

RESET PK WASHIER
 9-28-98
 MB



O.D.O.T. DISTRICT 2 SURVEY OFFICE

PERSONNEL

REFERENCE NO. 18-A

SHEET 12 OF

NOTES SOCKMAN

H.C. BARNHISEL

R.C. LOEHRKE

DATE 8-12-87

WEATHER CLEAR

TEMP. +82

ROUTE SR 281

COUNTY HENRY

TOWNSHIP MONROE

SECTION 21

T. 4 N. R. 7 E

TYPE MONUMENT P.K. Nail

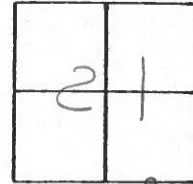
~~ON SURFACE~~ - BELOW 1 1/2"

~~LEFT - & PAV'T.~~ - RIGHT 5.0

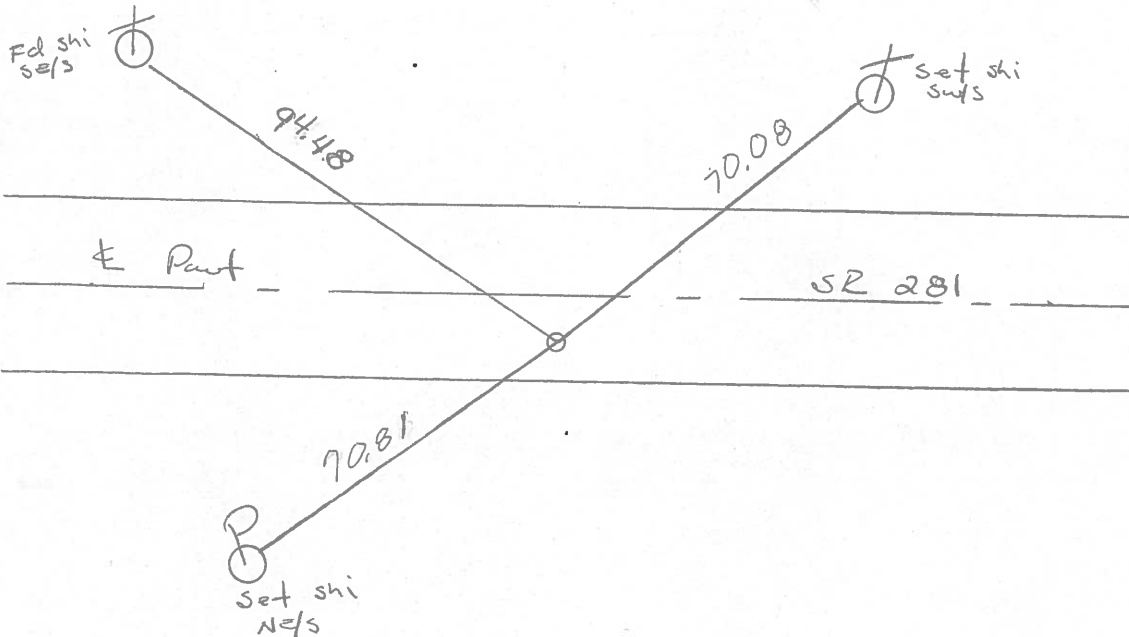
S.O TO RT. EDGE PAVEMENT

S.L.M. 456+88

Set Sm. RR
Spike
9-2-87

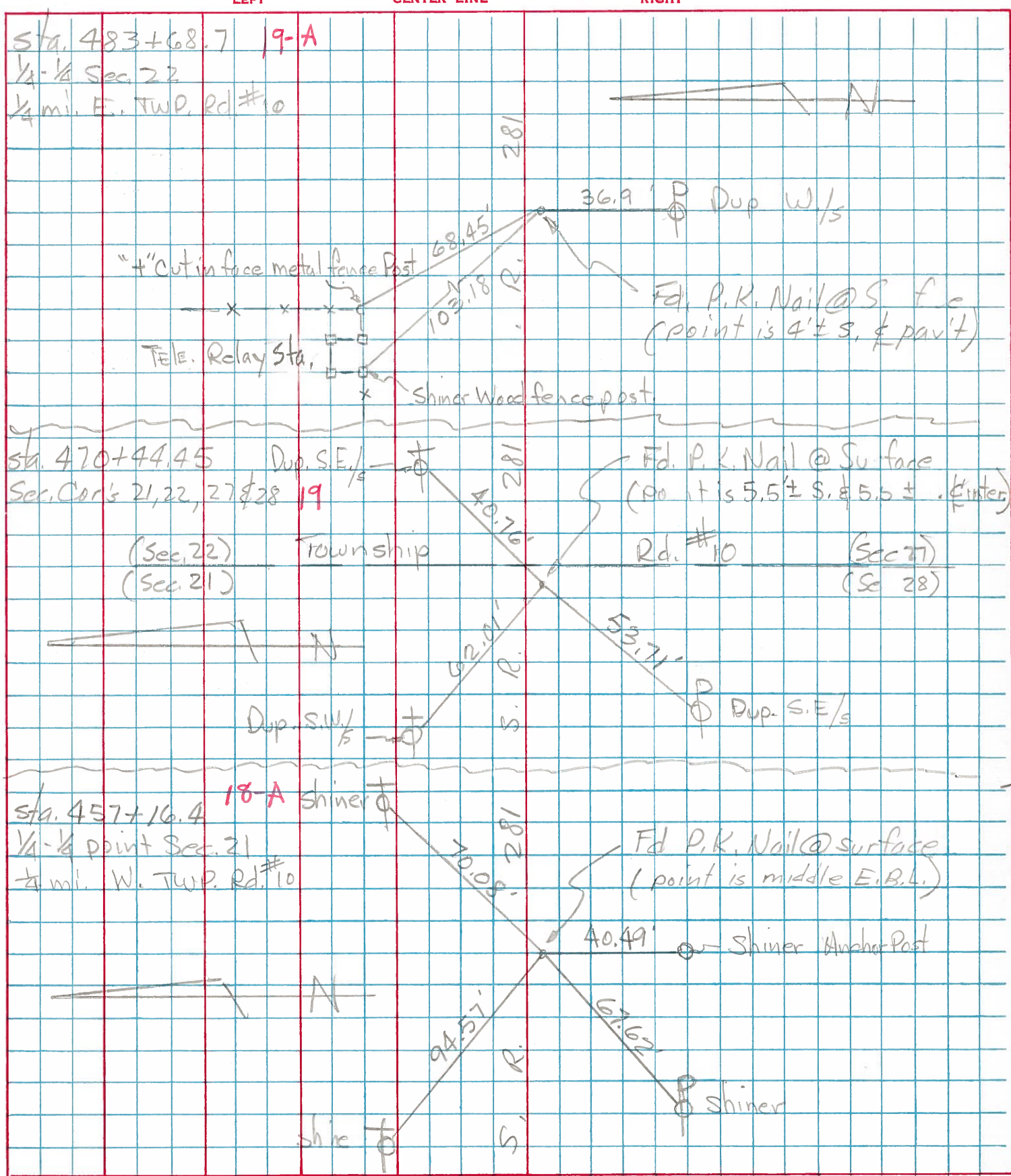


Record:
Sta. 457+16.4
1/4 - 1/4 Point Sec. 21



PERSONNEL TITLE PERSONNEL TITLE COUNTY HENRY DATE Nov. 19, 1974
 Tomsic _____
 Neuser _____
 Vanyo _____
 Caranata _____
 S. R. 281 WEATHER _____
 SEC. _____ TEMP. _____

DESCRIPTION LEFT CENTER LINE RIGHT JOB NO.



PERSONNEL TITLE PERSONNEL TITLE

COUNTY Henry

DATE 11-29-57

S. R. #281

10-24-60

WEATHER

SEC. "J"

TEMP.

DESCRIPTION

LEFT

CENTER LINE

RIGHT

JOB NO.

#21

1/4 COR. stone
R.R. Spk

(16)

39.46 S. Steel Anchor Post

67.46' N.E. To S.W. side T. Pole
45.0' N. To S. side 1" Gas Pipe
45.0' S. To N. " 1" " "
54.35' N.W. To ~~60°~~ spk. in S.E. side
53.43' shi. 24" Ash
.34' 30"
39.46 S. To iron A. Post

#22

1/4 1/4 COR. stone
R.R. Spk.
Fd. Iron Bolt

(16-A)

54.60'
53.28' N.E. To 60° spk intel. P.
71.40' 91' N. To 60° spk. in 16" Elm
44.90'
46.8' S. To 1" Gas pipe
59.20' S. To Witness stone
50.58' S.W. shi. P. Pole
52

#23

Sec. COR. stone
S.E. COR. Sec. 20
R.R. Spk.

(17)

(gone)

84.50' S.W. To 60° spk. in P. Pole
53.05'
66.75' N.W. To 60° " " T. Pole
84.50' S.E. To 60° in 12" Cottonwood
42.66' S.E. To "X" E. end 54" conc. pipe } Plum
49.67' S.W. To "X" W. end 54" " " }

#24

1/4 COR. stone
R.R. Spk.

(18)

Plum
Plum

27.44' S.E. To chiseled "X" on Hdw
27.14' S. To chiseled "X" N.W. COR. C.
28.82' N. To chiseled "X" S.W. COR. C.

#25

1/4 1/4 COR.
R.R. Spk.

(18-A)

40.70'
40.78' S. To spk in Cor. Post
67.62' S.W. To spk in Power Pole
70.30' N.E. To spk in Tel. Pole
94.73' N.W. To spk in Tel. Pole
.70

#26

Sec. COR. Sec. 21
R.R. Spk.

(19)

Plum

40.79' N.E. To Headless spk. E.
Side Tel. Pole
26.50' S.W. To ⊗ on N.E. COR.
Culvert.
34.80' N.W. To ⊗ on S.E. COR.
35.30' Culvert?
31.45' S.W. To "X" on N.W. COR. Culvert?