

O.D.O.T. DISTRICT 2 SURVEY OFFICE (USE ONLY)

PERSONNEL

REFERENCE NO. 19

SHEET 11 OF 34

NOTES RHOADES

DATE 9/6/18

ROUTE SR 281

H.C. O'DONNELL

WEATHER FAIR

COUNTY HENRY

R.C. RHOADES

TEMP. 70°

TOWNSHIP MONROE

DWG BY NIESE PID CHIP_2

SECTION 22

T 4 N R 7 E

TYPE MONUMENT SM.R.R.SPIKE

~~ON SURFACE~~ - BELOW 1.5"

OFFSET \odot PAVEMENT 5.25' \pm : RT

- TO - EDGE PAVEMENT 5.4' W CR NORTH

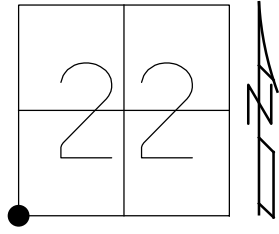
STATION: 470+16

HORZ.DATUM: NAD83(2011)

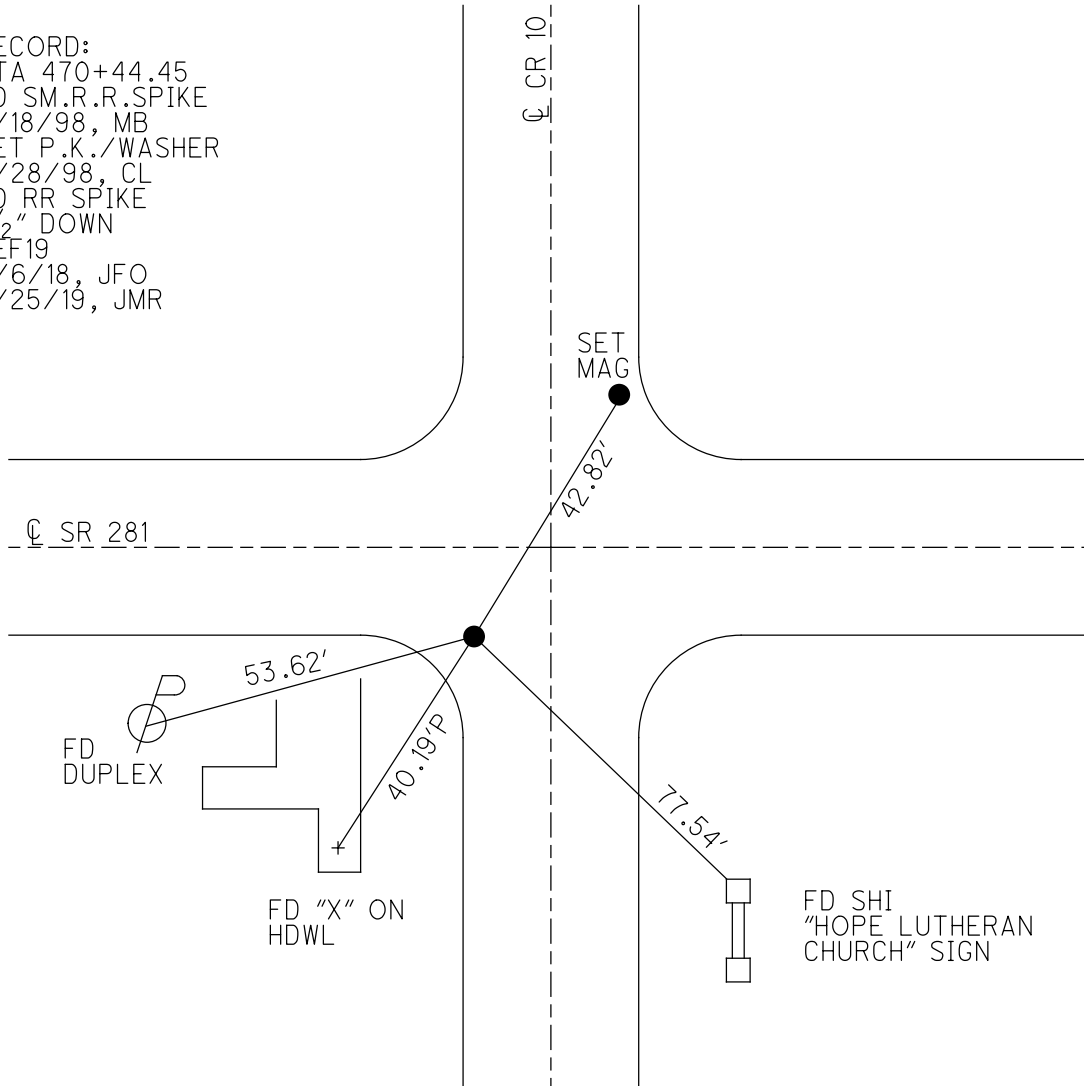
GEOID: 2012A

GRID: NORTHING: 592681.183

EASTING: 1540806.673



RECORD:
 STA 470+44.45
 FD SM.R.R.SPIKE
 8/18/98, MB
 SET P.K./WASHER
 9/28/98, CL
 FD RR SPIKE
 1 1/2" DOWN
 REF 19
 9/6/18, JFO
 7/25/19, JMR



O.D.O.T. DISTRICT 2 SURVEY OFFICE

PERSONNEL

REFERENCE NO. 19

SHEET 13 OF 34

NOTES Huss

H.C. Barwise

R.C. Rousos

DATE 8-18-98

WEATHER Fair

TEMP. + 82° F

ROUTE SR 281

COUNTY HENRY

TOWNSHIP MONROE

SECTION 22

T. 4 N. R. 7 E.

TYPE MONUMENT Sm. RR. Spk

ON SURFACE - ~~BELOW~~ Surface

LEFT- ~~CL~~ PAV'T. - RIGHT 5, 25' RT

TO EDGE PAVEMENT 5, 41' W. Co. Rd. North

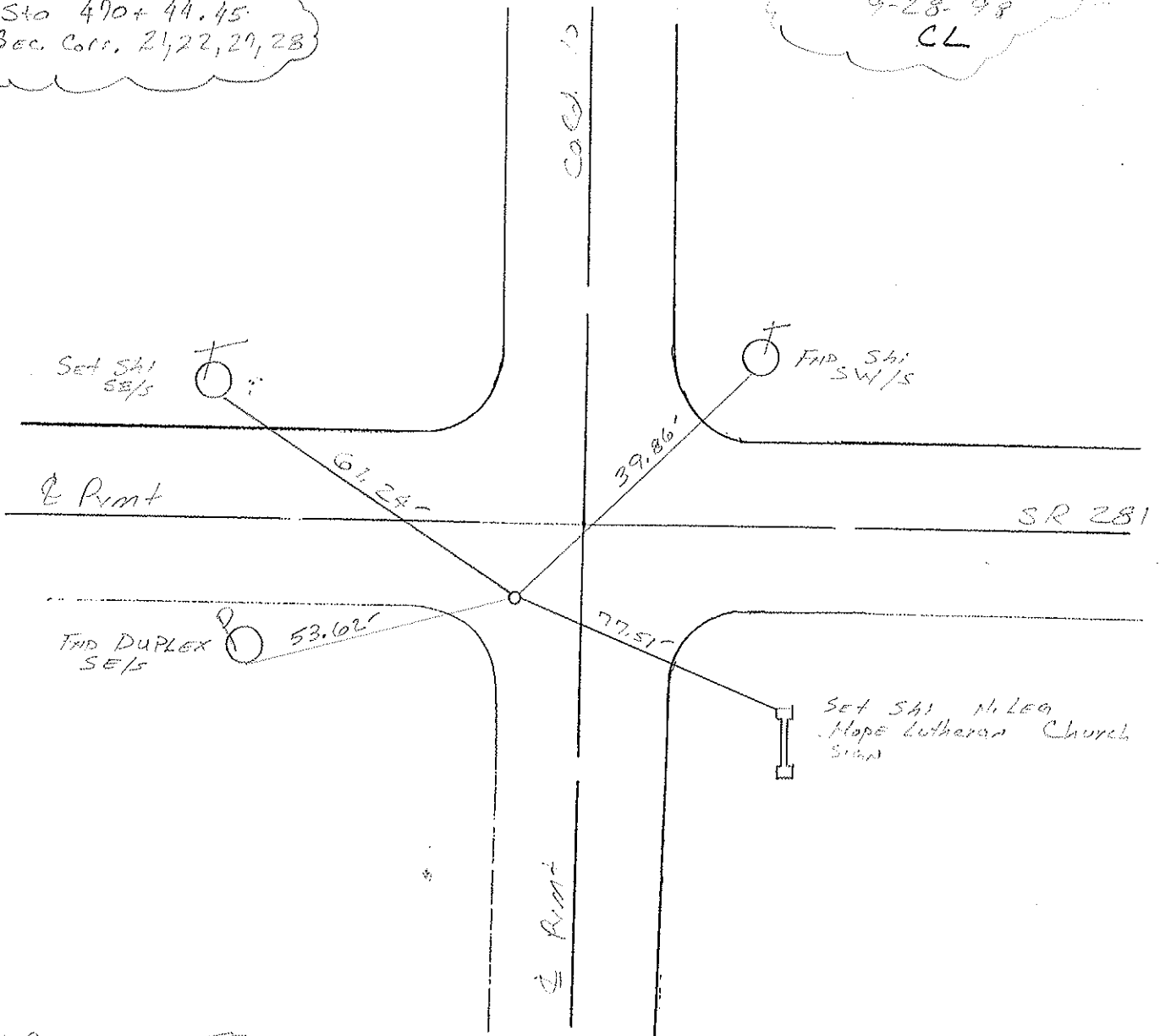
S.L.M. 14+339.18 s.k. (sta 490+16 s.l.m.)

21	22
28	27



RECORD:
Sta 490+44.45
Sec. Corr. 21, 22, 29, 28

Reset PE/WASHER!
9-28-98
CL



DRAWN BY TR

O.D.O.T. DISTRICT 2 SURVEY OFFICE

PERSONNEL

REFERENCE NO. 19

SHEET 13 OF

NOTES SOCKMAN

H.C. RARNHISEL

DATE 2-12-87

ROUTE SR 281

R.C. LOEHRKE

WEATHER CLEAR

COUNTY HENRY

TEMP. + 8c

TOWNSHIP MONROE

SECTION 22

Set Small R.R.
Spike
9-2-87

T4 NR 7 E

TYPE MONUMENT P.K. Nail

ON SURFACE - BELOW YES

~~LEFT~~ - PAV'T. - RIGHT 5.4'

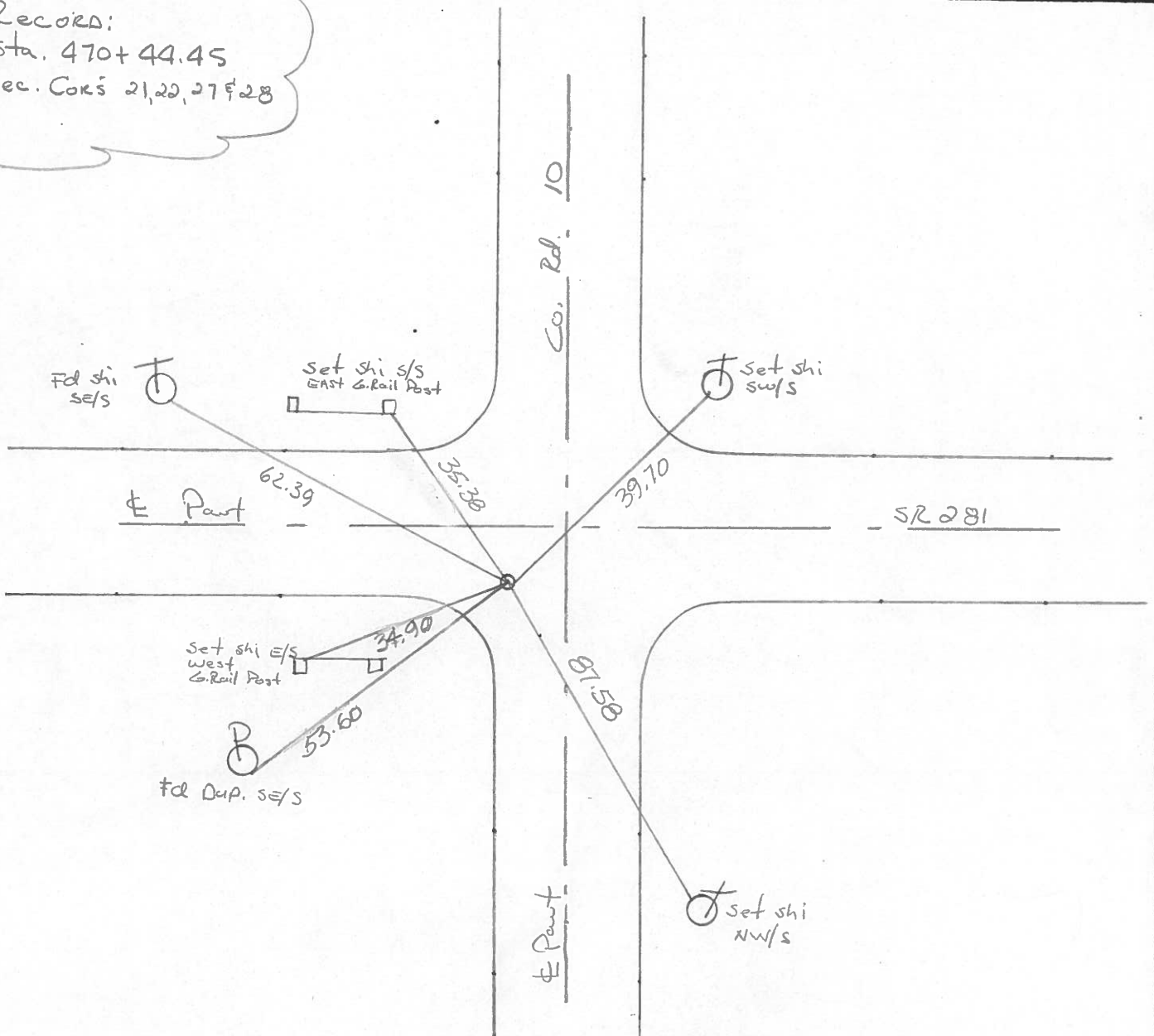
TO EDGE PAVEMENT 5.4' West of Co. Rd. No. 74

S.L.M. 470+16

21	22
28	27



Record:
Sta. 470+44.45
Sec. Cors 21, 22, 27 & 28

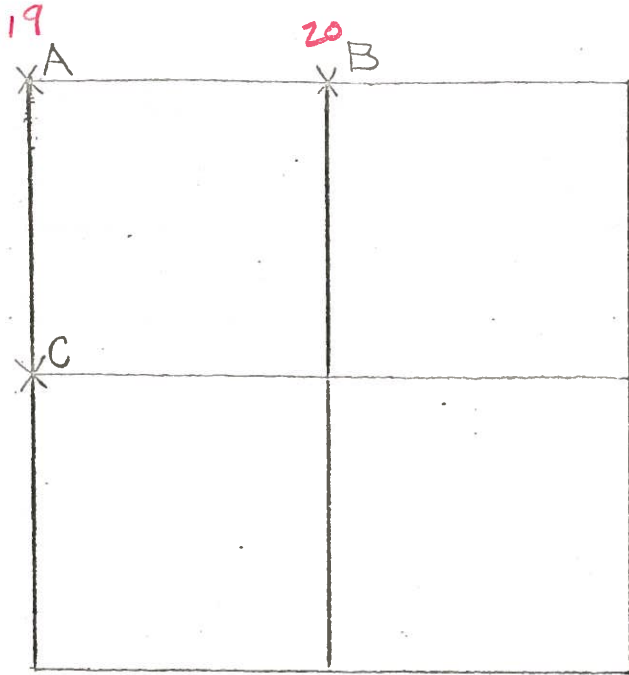


COUNTY HENRY S.R. 281

SHEET 1 OF 2
T 4 N , R 7 E

TOWNSHIP MONROE

SECTION 27



7-2-79 R.W, J.J, G.M.

A - FOUND P.K. OVER BOAT SPIKE
 OVER RAILROAD SPIKE 0.28' NORTH
 AND 0.25' WEST OF HIGH POINT OF
 STONE (10" x 15" x 17") 10" BELOW ROAD
 SURFACE. REMOVED P.K., BOAT SPIKE
 AND RAILROAD SPIKE. PLACED CENTER
 PUNCHED RAILROAD SPIKE ON
 SURFACE OVER HIGH POINT OF STONE

P.K.'s 6' N. & E. STONE IS 4.0' NORTH OF SOUTH EDGE OF 18' PAV. MNT.

- 62.32' ✓ N.W. TO DUPLEX SW/S I
- 39.74' SHINER SW/S I
- 40.84' N.E. TO DUPLEX SW/S I
- 53.62' ✓ S.W. TO DUPLEX E/S P

F.D. P.K. @ SURFACE
 5.4' S. of E. PAVT.
 OK 12-7-81
 40° S.W.H.

7-2-79

B - FOUND P.K. OVER IRON BOLT 0.15' EAST AND 0.05' SOUTH OF
 HIGH POINT OF STONE (8" x 12" x 13") 15" BELOW ROAD SURFACE.
 REMOVED P.K. AND IRON BOLT. PLACED CENTER PUNCHED
 RAILROAD SPIKE ON SURFACE OVER HIGH POINT OF STONE.

P.K.'s 6' N. & W. STONE IS 5.3' NORTH OF SOUTH EDGE OF 18' PAVEMENT.

- 77.84' ^{86'} W.N.W. TO DUPLEX SW/S P
- 28.40' ✓ N. TO "+" IN S.W. CORNER CATCH BASIN (PLUMBED)
- 90.74' ^{80'} E.N.E. TO SHINER SW/S I
- 73.97' ✓ S.W. TO SHINER NW/S P

OK 12-7-81
 3.9' S. of E. PAVT.
 6.1' TO S.E.P.
 40°
 S.W.H.

PERSONNEL TITLE PERSONNEL TITLE

Konisk
Neuser
Vanvo
Carasata

COUNTY HENRY

DATE NOV. 19, 1970

S. R. 281

WEATHER

SEC.

TEMP.

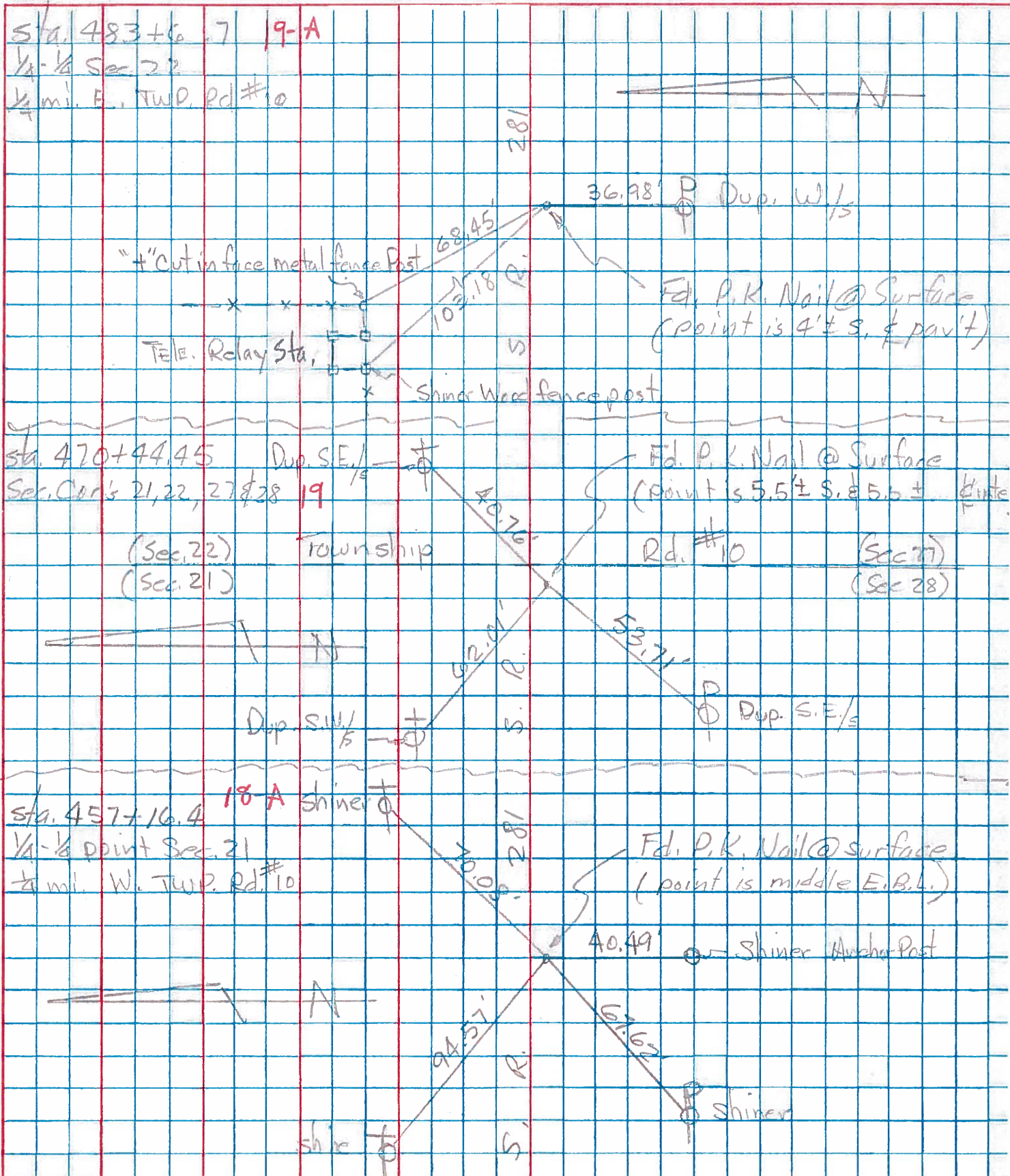
DESCRIPTION

LEFT

CENTER LINE

RIGHT

JOB NO.



PERSONNEL TITLE PERSONNEL TITLE

COUNTY Henry

DATE 11-29-57

S. R. #281

10-24-60

WEATHER

SEC. "J"

TEMP.

DESCRIPTION

LEFT

CENTER LINE

RIGHT

JOB NO.

#21

1/4 cor. stone
R.R. Spk

(16)

39.46 S. Steel/Anchor
Post

67.46' N.E. To S.W. side T. Pole
45.0' N. To S. side 1" Gas Pipe
45.0' S. To N. " 1" " "
54.35' N.W. To ~~60' spk.~~ in S.E. side
53.43 shi. 24" Ash
.34 30"

#22

1/4 1/4 cor. stone
R.R. Spk.
Fd. Iron Bolt

(16-A)

54.60' N.E. To 60' spk intel. P.
71.40' N. To 60' spk. in 16" Elm
44.90' S. To 1" Gas pipe
59.20' S. To Witness stone
50.58 S.W. shi. P. Pole
52

#23

Sec. Cor. Stone
S.E. Cor. Sec. 20
R.R. Spk.

(17)

(gone)

84.50' S.W. To 60' spk. in P. Pole
53.05
68.75' N.W. To 60' " " T. Pole
84.50' S.E. To 60' in 12" Cottonwood
42.66' S.E. To "X" E. end 54" conc. pipe } Plum
49.67 S.W. To "X" W. end 54" " " }

#24

1/4 cor. stone
R.R. Spk.

(18)

Plum
Plum

27.44' S.E. To chiseled "X" on Hdw
27.14' S. To chiseled "X" N.W. cor. c.
28.82' N. To chiseled "X" S.W. cor. c.

#25

1/4-1/4 cor.
R.R. Spk.

(18-A)

40.70
40.78' S. To spk in cor. Post
67.62' S.W. To spk in Power Pole
70.30' N.E. To spk in Tel. Pole
94.73 N.W. To spk in Tel. Pole
.70

#26

Sec. Cor. Sec. 21
R.R. Spk.

(19)

Plum

40.79' N.E. To Headless spk. E.
Side Tel. Pole
26.50' S.W. To ⊗ on N.E. cor.
Culvert.
34.80 N.W. To ⊗ on S.E. cor.
35.30 Culvert?
31.45 S.W. To "X" on N.W. cor. Culvert?