

O.D.O.T. DISTRICT 2 SURVEY OFFICE (USE ONLY)

PERSONNEL

REFERENCE NO. 19 A

SHEET 12 OF 34

NOTES RHOADES DATE 9/6/18
 H.C. O'DONNELL WEATHER FAIR
 R.C. RHOADES TEMP. 70°

ROUTE SR 281
 COUNTY HENRY
 TOWNSHIP MONROE
 SECTION 22

DWG BY NIESE PID CHIP_2

T 4 N R 7 E

TYPE MONUMENT P.K.NAIL

ON SURFACE - ~~BELOW~~ ON

OFFSET ☉ PAVEMENT 4.3' ~~±~~ : RT

6.4' TO RT EDGE PAVEMENT

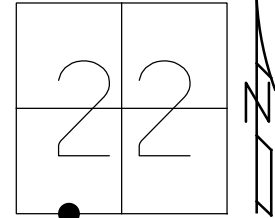
STATION: 483+42

HORIZ.DATUM: NAD83(2011)

GEOID: 2012A

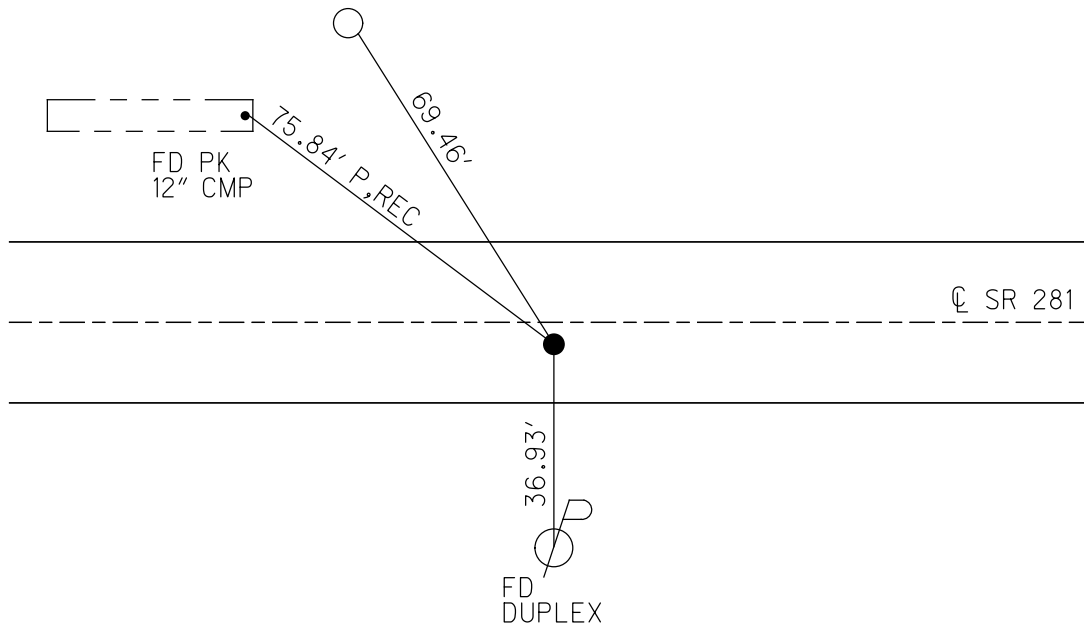
GRID: NORTHING: 592670.827

EASTING: 1542131.201



RECORD:
 STA 483+68.7
 1/4-1/4 SEC 22
 FD SM.R.R.SPIKE
 8/18/98, MB
 SET P.K./WASHER
 9/28/98, MRC
 FD P.K.NAIL
 REFA19
 9/6/18, JFO
 7/25/19, JMR

FD "+" CUT
 2 1/2" UP
 FEN POST
 LEANING WEST



O.D.O.T. DISTRICT 2 SURVEY OFFICE

PERSONNEL

REFERENCE NO. 19-A

SHEET 14 OF 34

NOTES Huss

H.C. Barnhisel

DATE 8-18-98

ROUTE SR 281

R.C. Rousos

WEATHER Fair

COUNTY Henry

TEMP. +82°F

TOWNSHIP Monroe

SECTION 22

T 4 N R 7 E

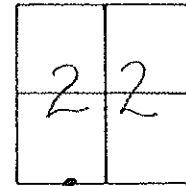
TYPE MONUMENT Small RR Spike

ON SURFACE - ~~BELOW~~ Surface

~~LEFT - C. PAV'T.~~ - RIGHT 4.3'

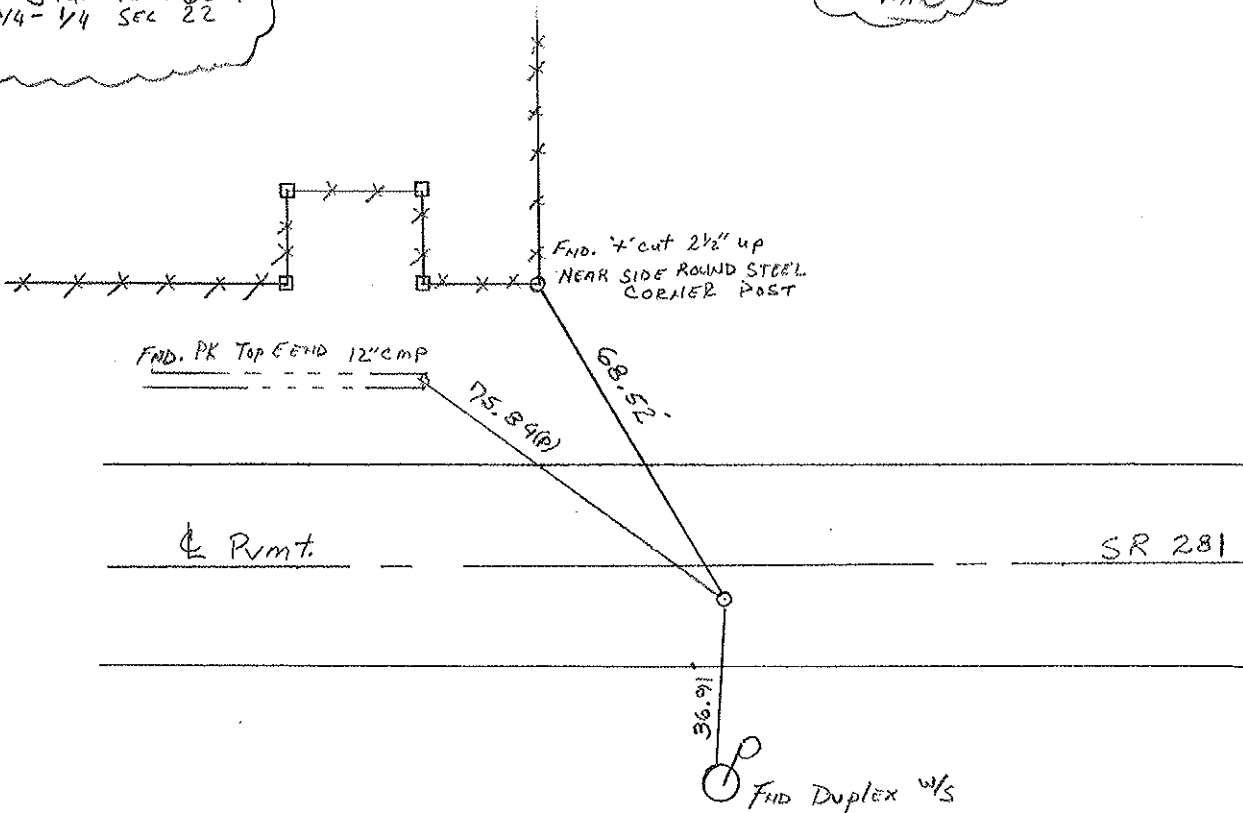
6.4' TO RT. EDGE PAVEMENT

S.L.M. 14+744.82 slk (483+42 slm)



RECORD:
Sta. 483+68.7
1/4-1/4 SEC 22

(RESET PK & WASHER)
9-29-98
MRC



DRAWN By TR

O.D.O.T. DISTRICT 2 SURVEY OFFICE

PERSONNEL

REFERENCE NO. 19-A

SHEET 14 OF

NOTES Sackman

H.C. BARNHISEL

R.C. LOEHKES

DATE 8-12-87

WEATHER CLEAR

TEMP. +82

ROUTE SR 281

COUNTY HENRY

TOWNSHIP MONROE

SECTION 22

T4 NR 7 E

TYPE MONUMENT P.K. Nail

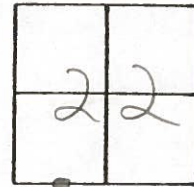
ON SURFACE - BELOW 1 1/2"

LEFT- & PAVT. - RIGHT 3.9'

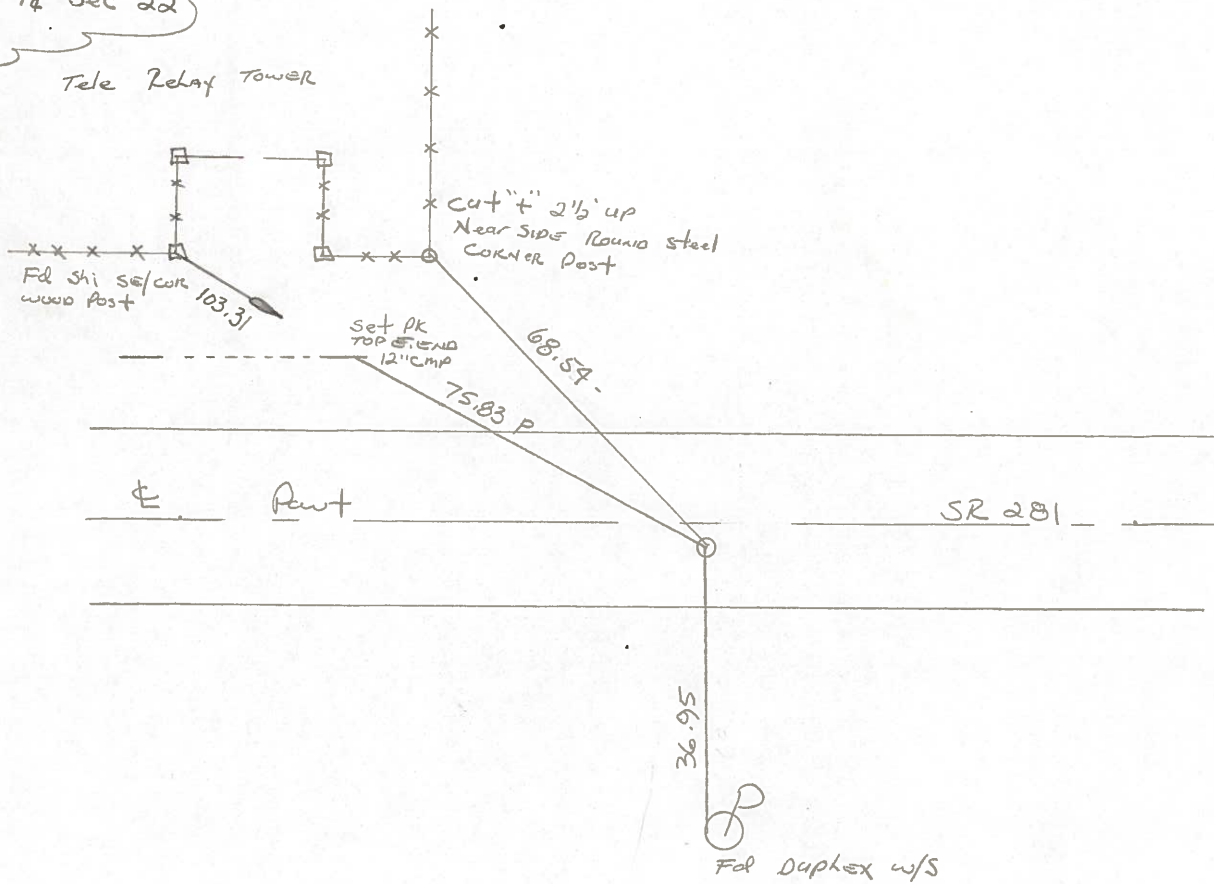
5.7 TO RT EDGE PAVEMENT

S.L.M. 483 + 42

Set Sm RR
Spike
42-87



Record:
Sta. 483+68.7
1/4-1/4 Sec 22



PERSONNEL TITLE PERSONNEL TITLE

Tomsick
Neuser
Vanyn
Caranata

COUNTY HENRY

DATE Nov. 19, 1970

S. R. 281

WEATHER

SEC.

TEMP.

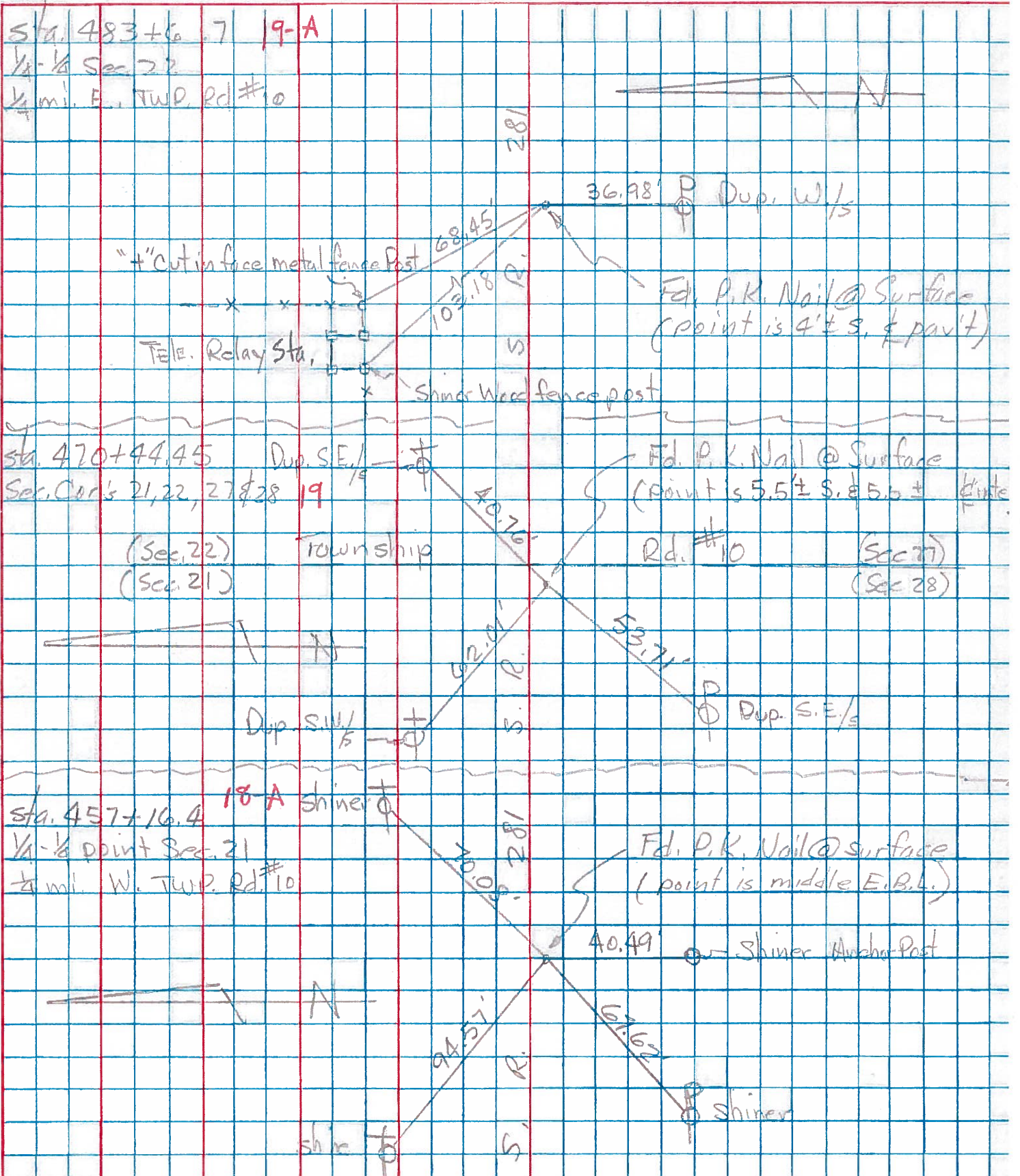
DESCRIPTION

LEFT

CENTER LINE

RIGHT

JOB NO.



PERSONNEL TITLE PERSONNEL TITLE

COUNTY Henry DATE 11-29-57
11-3-60

S. R. 281 WEATHER

SEC. "J" TEMP.

DESCRIPTION LEFT CENTER LINE RIGHT JOB NO.

DESCRIPTION	LEFT	CENTER LINE	RIGHT	JOB NO.
#27	<p>1/4-1/4 COR. Iron bolt R.R. SPK <u>(19-A)</u></p>	<p>gone gone</p>	<p>52.00' N.E. spk. in 3rd F.P. E. of COR. Post 54.63' N. To spk in 1st F.P. N. of COR. Post 39.55' S. To spk in COR. Post 35.07' S. Shi. P. Pole 68.48' N.W. steel Post (Bent)</p>	
#28	<p>1/4 COR. stone R.R. SPK <u>(20)</u></p>	<p>Plum</p>	<p>91.⁰⁰55' N.E. To spk. in Tel. Pole 71.⁴⁷57' N.W. To spk. in Tel. Pole 45.00' N. To 1" Gas Pipe 28.08 N.E. TO S.W. COR. C.B. CURB.</p>	
#29	<p>1/4-1/4 COR. R.R. SPK <u>(20-A)</u></p>		<p>^{.50} 33.72' S.E. To ⊗ on ctr. wing wall ^{.20} 34.24' S.S.W. To ⊗ on step of Abut. 41.85' N.E. To Shi. Tel. Pole 38.50' S.W. To W. end Abut. 102.65' E.S.E. TO N.W. COR. Abut. wall</p>	
#30	<p>Intersection S.R. #109 & 281 Boat spk. S.E. COR. SEC. 22 R.R. SPK. <u>(22)</u></p>		<p>41.78' N.E. To ⊗ on S. side Hdwl. 44.77' S.E. To ⊗ on N. side Hdwl. 63.30' N.W. To spk. in Tel. Pole 42.69' S.W. To spk. in Power Pole</p>	
#31	<p>1/4 stone E</p>			