

O.D.O.T. DISTRICT 2 SURVEY OFFICE (USE ONLY)

PERSONNEL _____ REFERENCE NO. 20 SHEET 13 OF 34
 NOTES RHOADES DATE 9/6/18 ROUTE SR 281
 H.C. O'DONNELL WEATHER FAIR COUNTY HENRY
 R.C. RHOADES TEMP. 70° TOWNSHIP MONROE
 _____ SECTION 22
 DWG BY NIESE PID CHIP_2 T 4 N R 7 E

TYPE MONUMENT P.K./WASHER

ON SURFACE - ~~BELOW~~ ON

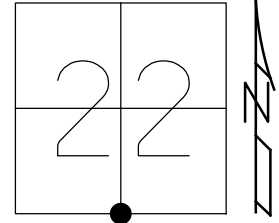
OFFSET 6.7' \perp PAVEMENT 4.0' ~~RT~~ : RT

6.7' TO RT EDGE PAVEMENT

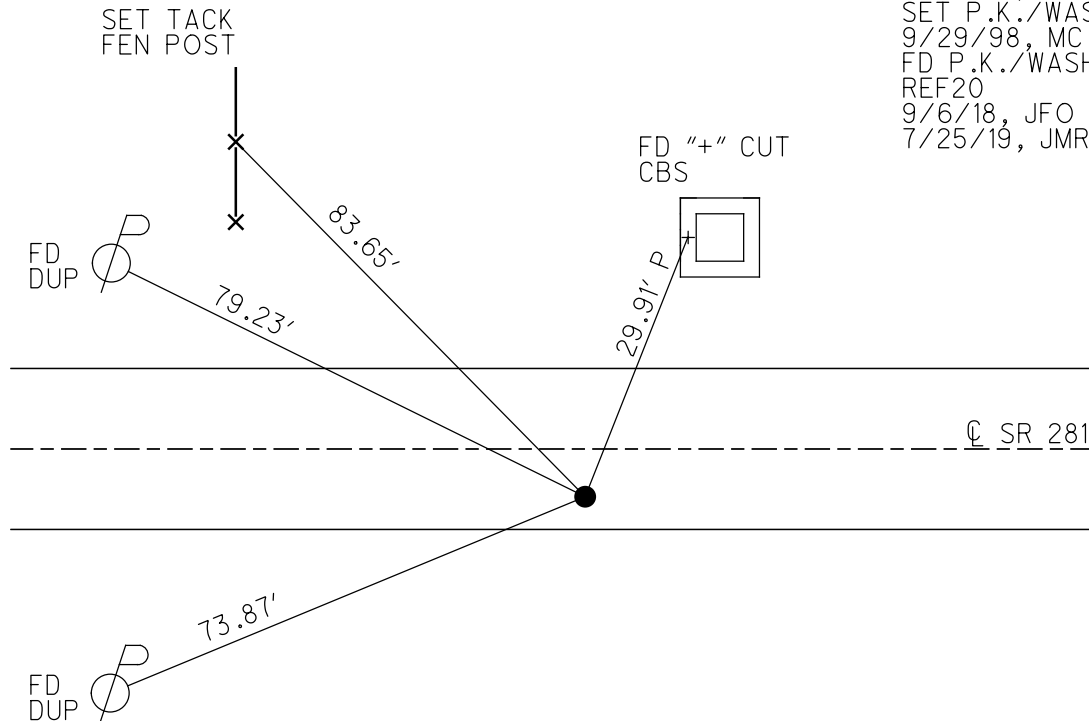
STATION: 496+89.49

HORIZ.DATUM: NAD83(2011) GEOID: 2012A

GRID: NORTHING: 592657.942 EASTING: 1543454.701



RECORD:
 STA 496+93.3
 FD SM.R.R.SPIKE
 8/18/98, MB
 SET P.K./WASHER
 9/29/98, MC
 FD P.K./WASHER
 REF20
 9/6/18, JFO
 7/25/19, JMR



O.D.O.T. DISTRICT 2 SURVEY OFFICE

PERSONNEL

REFERENCE NO. 20

SHEET 15 OF 34

NOTES Huss

H.C. BARNHISEL

DATE 8-18-98

ROUTE SR 281

R.C. ROUSOS

WEATHER FAIR

COUNTY HENRY

TEMP. +84° F

TOWNSHIP MONROE

SECTION 22

T 4 N R 7 E

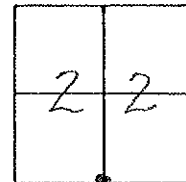
TYPE MONUMENT Sm. RR. SPK

ON SURFACE - ~~BELOW~~ SURFACE

~~LEFT~~ - & PAW'T. - RIGHT 4.0' RT

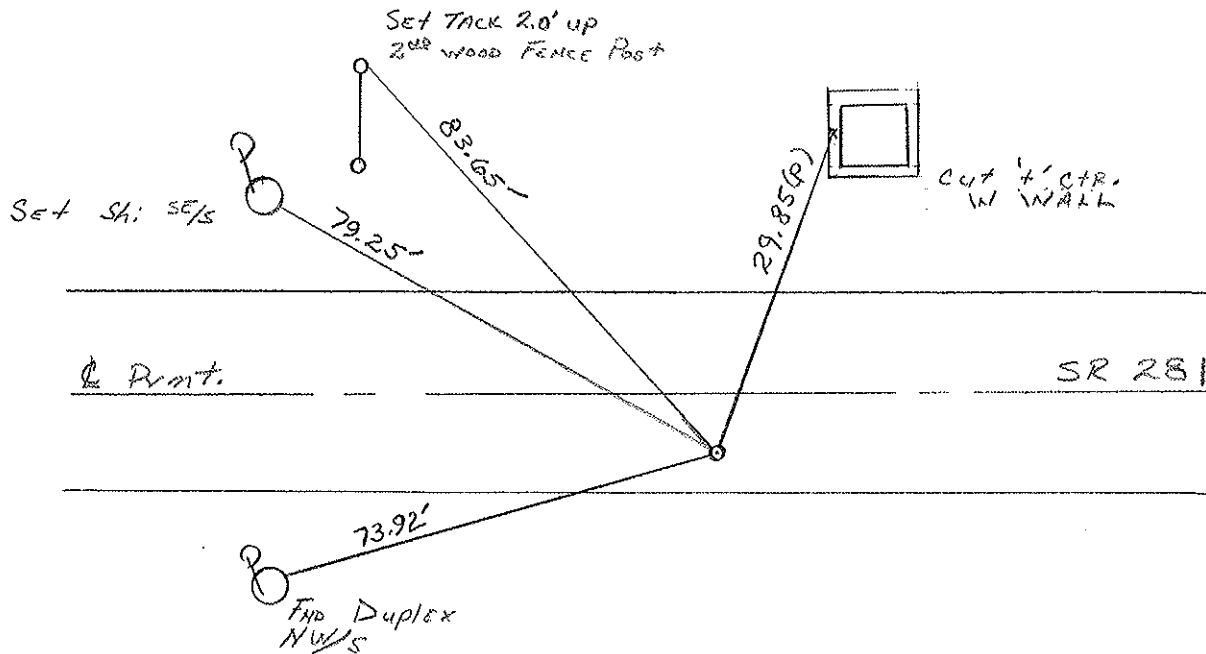
6.9' TO RT EDGE PAVEMENT

S.L. ~~15~~ 15+150.60 SLK (496+54 SLM)



RECORDS:
Sta 496+93.3
V4 Pt Sec. 22

RESET PLEWASHER
9-29-98
MRC



DRAWN BY TR

O.D.O.T. DISTRICT 2 SURVEY OFFICE

PERSONNEL

REFERENCE NO. 20

SHEET 15 OF

NOTES SOURMAN

H.C. BARNHISEL

R.C. LOEHRKE

DATE 8-12-87

WEATHER CLEAR

TEMP. +82

ROUTE SR 281

COUNTY HENRY

TOWNSHIP Monroe

SECTION 22

T4 N R 7 E

TYPE MONUMENT P.K. Nail

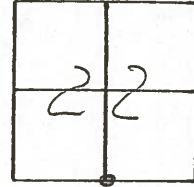
ON SURFACE - ~~BELOW~~ yes

LEFT - ~~6~~ PAV'T. - RIGHT 3.8

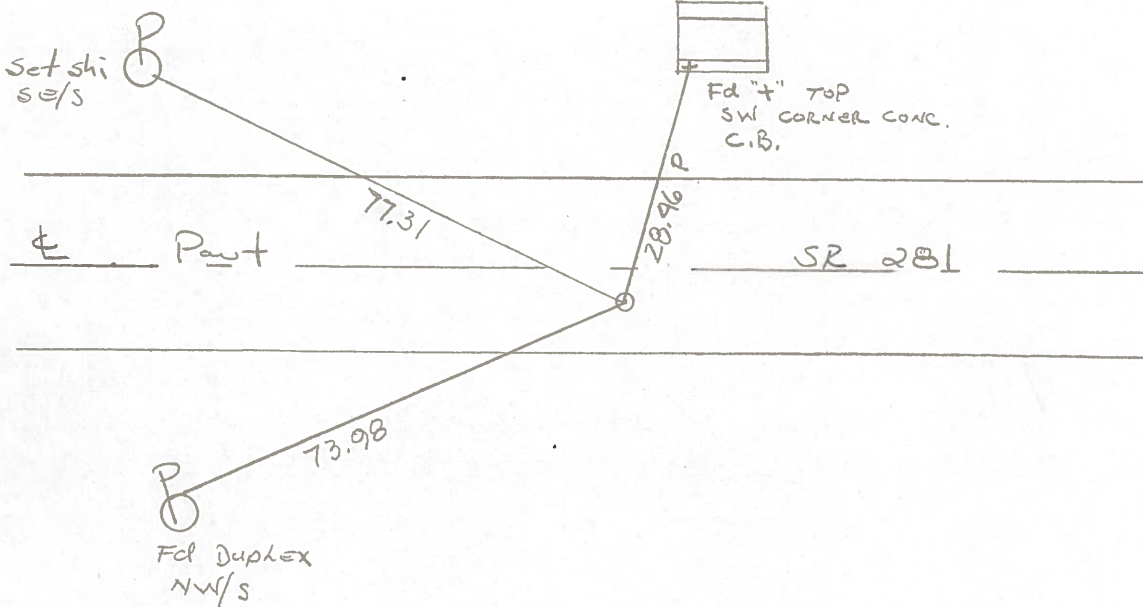
6.3 TO RT EDGE PAVEMENT

S.L.M. 496 + 54

Set Sm. RR.
Spike
9-2-87



Records:
Sta. 496 + 93.3
1/4 point sec 22

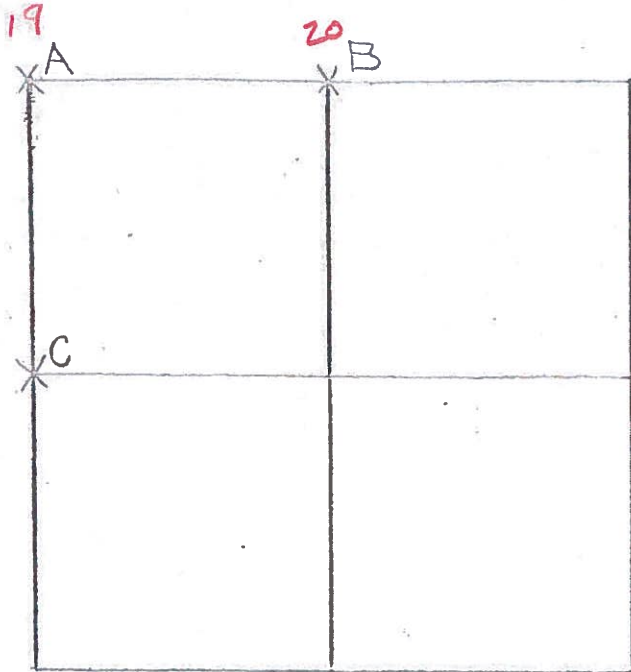


COUNTY HENRY S.K. 281

T 4 N . R 7 E

TOWNSHIP MONROE

SECTION 27



7-2-79 R.W, J.J, G.M.

A - FOUND P.K. OVER BOAT SPIKE
 OVER RAILROAD SPIKE 0.28' NORTH
 AND 0.25' WEST OF HIGH POINT OF
 STONE (10" x 15" x 17") 10" BELOW ROAD
 SURFACE. REMOVED P.K., BOAT SPIKE
 AND RAILROAD SPIKE. PLACED CENTER
 PUNCHED RAILROAD SPIKE ON
 SURFACE OVER HIGH POINT OF STONE

P.K.'s 6' N. & E. STONE IS 4.0' NORTH OF SOUTH EDGE OF 18' PAV. MNT.

62.32' N.W. TO DUPLEX SW/S I

~~39.74~~ 40.84' N.E. TO SHINER SW/S I

53.62' S.W. TO DUPLEX E/S P

FD. P.K. @ SURFACE
 5.4' S. of & PAVT.
 OK 12-7-81
 40° S.W.H.

7-2-79

B - FOUND P.K. OVER IRON BOLT 0.15' EAST AND 0.05' SOUTH OF
 HIGH POINT OF STONE (8" x 12" x 13") 15" BELOW ROAD SURFACE.
 REMOVED P.K. AND IRON BOLT. PLACED CENTER PUNCHED
 RAILROAD SPIKE ON SURFACE OVER HIGH POINT OF STONE.

P.K.'s 6' N. & W. STONE IS 5.3' NORTH OF SOUTH
EDGE OF 18' PAVEMENT.

77.84' W.N.W. TO DUPLEX SW/S P

28.40' N. TO "+" IN S.W. CORNER CATCH BASIN (PLUMBED)

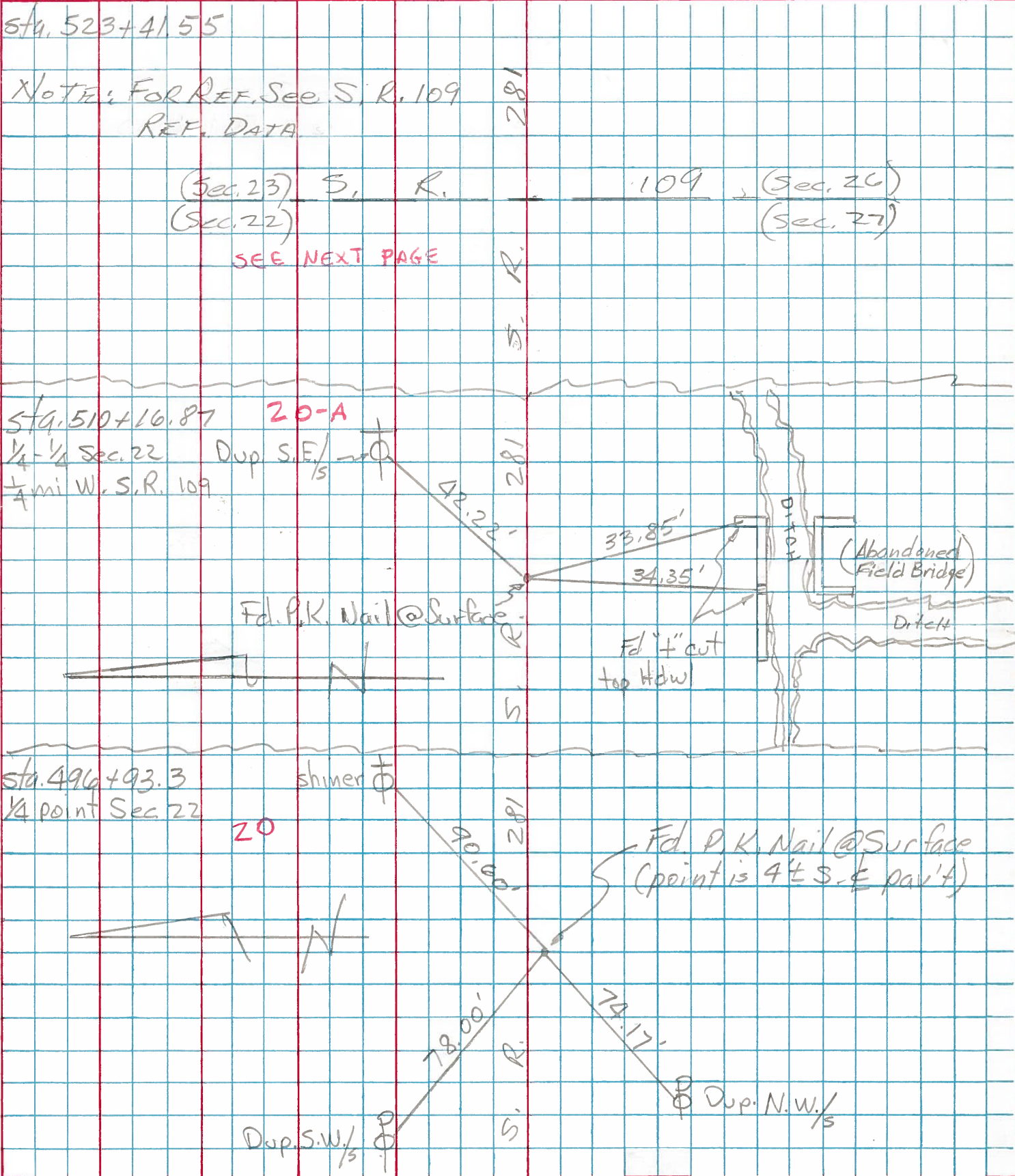
90.77' E.N.E. TO SHINER SW/S I

73.97' S.W. TO SHINER NW/S P

OK 12-7-81
 3.9' S. of & PAVT.
 6.1' TO S.E.P.
 40°
 S.W.H.

PERSONNEL	TITLE	PERSONNEL	TITLE	COUNTY	DATE
Tomsic				HENRY	Nov. 19, 1974
Neuser				S. R. 281	WEATHER
Vanyo				SEC.	TEMP.
Granata					

DESCRIPTION	LEFT	CENTER LINE	RIGHT	JOB NO.
-------------	------	-------------	-------	---------



PERSONNEL	TITLE	PERSONNEL	TITLE

COUNTY Henry DATE 11-29-57
11-3-60
 S. R. 281 WEATHER _____
 SEC. "J" TEMP. _____

DESCRIPTION	LEFT	CENTER LINE	RIGHT	JOB NO.
#27	<p>1/4-1/4 COR. Iron bolt R.R. SPK. (19-A)</p>	<p>gone gone</p>	<p>52.00' N.E. spk. in 3rd F.P. E. of COR. Post 54.63' N. To spk in 1st F.P. N. COR. Post 39.55' S. To spk in COR. Post 35.07' S. Shi. Pole 68.48' N.W. steel Post (Bent)</p>	
#28	<p>1/4 COR. stone R.R. SPK. (20)</p>	<p>plum</p>	<p>91.00' N.E. To spk. in Tel. Pole 76.47' N.W. To spk. in Tel. Pole 45.00' N. To 1" Gas Pipe 28.08 N.E. TO S.W. COR. C.B. CURB.</p>	
#29	<p>1/4-1/4 COR. R.R. SPK. (20-A)</p>		<p>33.72^{.80}' S.E. To ⊗ on ctr. wing wall 34.24^{.20}' S.S.W. To ⊗ on step of Abut 41.85' N.E. To Shi. Tel. Pole 38.50' S.W. To W. end Abut. 102.65' E.S.E. TO N.W. COR. Abut. wall</p>	
#30	<p>Intersection S.R. #109 & 281 Boat spk. S.E. COR. SEC. 22 R.R. SPK. (22)</p>		<p>41.78' N.E. To ⊗ on S. side Hwy 44.77' S.E. To ⊗ on N. side Hwy 63.30' N.W. To spk. in Tel. Pole 42.69' S.W. To spk. in Power Pa</p>	
#31	<p>1/4 stone E</p>			