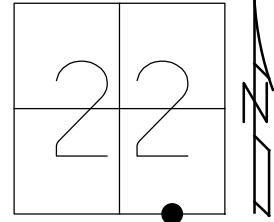


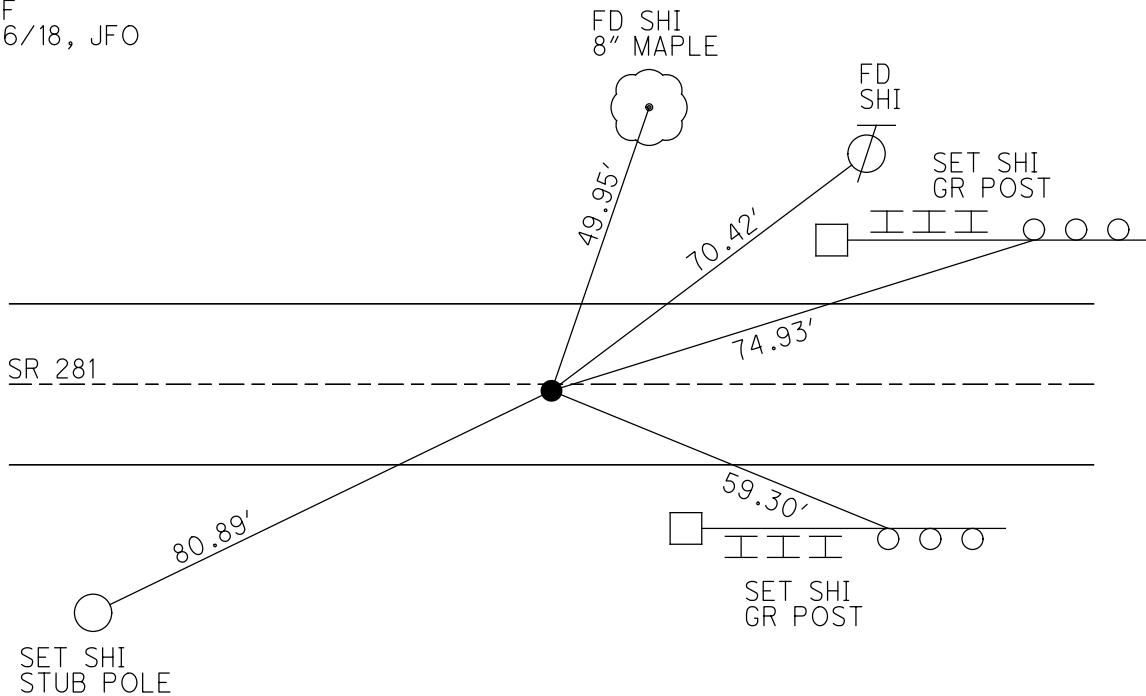
O.D.O.T. DISTRICT 2 SURVEY OFFICE (USE ONLY)

PERSONNEL _____ REFERENCE NO. 20 A SHEET 14 OF 34
 NOTES HUSS DATE 8/18/98 ROUTE SR 281
 H.C. BARNHISEL WEATHER FAIR COUNTY HENRY
 R.C. ROUSOS TEMP. 84° TOWNSHIP MONROE
 SECTION 22
 DWG BY NIESE PID CHIP_2 T 4 N R 7 E

TYPE MONUMENT SM.R.R.SPIKE
 ON SURFACE - ~~BELOW~~ ON
 OFFSET 0.6' ± : RT
9.9' TO RT EDGE PAVEMENT
 STATION: 509+89
 HORZ.DATUM: - GEOID: -
 GRID: NORTHING: - EASTING: -



RECORD:
 STA 510+16.87
 1/4-1/4 SEC 22
 FD SM.R.R.SPIKE
 8/18/98, MB
 SET P.K./WASHER
 9/29/98, MRC
 DNF
 9/6/18, JFO



O.D.O.T. DISTRICT 2 SURVEY OFFICE

PERSONNEL

REFERENCE NO. 20-A

SHEET 16 OF 34

NOTES Huss

H.C. Barnhisel

DATE 8-18-98

ROUTE SR 281

R.C. Rousos

WEATHER Fair

COUNTY Henry

TEMP. +84° F

TOWNSHIP Monroe

SECTION 22

T. 4 N. R. 7 E.

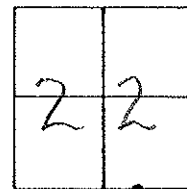
TYPE MONUMENT Sm. RR spike

ON SURFACE - ~~BELOW~~ Surface

~~LEFT~~ - PAV'T. - RIGHT 0.6' R+

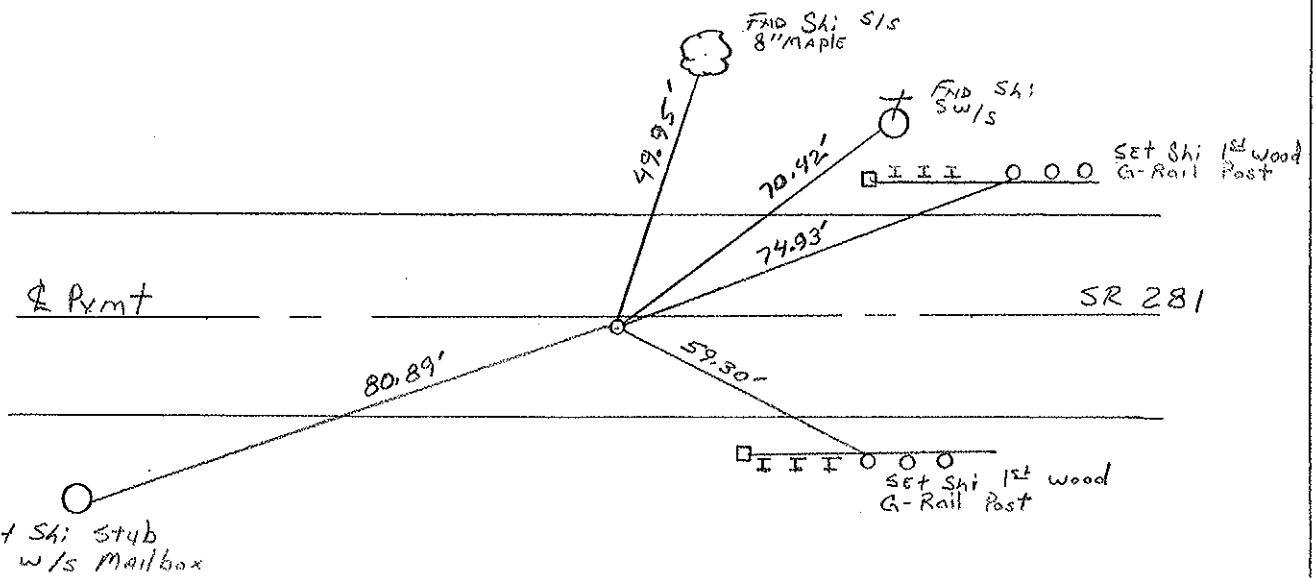
9.9 TO R+ EDGE PAVEMENT

S.L.M. 15+449 slk (509+89 slm)



Record:
Sta. 510+16.87
Y4-Y4 Sec. 22

(RESET PK & WASHER
9-29-98
MRC)



DRAWN BY TR

PERSONNEL	TITLE	PERSONNEL	TITLE

COUNTY Henry DATE 11-29-57
11-3-60
 S. R. 281 WEATHER _____
 SEC. "J" TEMP. _____

DESCRIPTION	LEFT	CENTER LINE	RIGHT	JOB NO.
#27	<p>1/4-1/4 COR. Iron bolt R.R. SPK. (19-A)</p>	<p>gone gone</p>	<p>52.00' N.E. spk. in 3rd F.P. E. of COR. Post 54.63' N. To spk in 1st F.P. N. COR. Post 39.55' S. To spk in COR. Post 35.07' S. Shi. Pole 68.48' N.W. steel Post (Bent)</p>	
#28	<p>1/4 COR. stone R.R. SPK. (20)</p>	<p>plum</p>	<p>91.00' N.E. To spk. in Tel. Pole 76.47' N.W. To spk. in Tel. Pole 45.00' N. To 1" Gas Pipe 28.08 N.E. TO S.W. COR. C.B. CURB.</p>	
#29	<p>1/4-1/4 COR. R.R. SPK. (20-A)</p>		<p>33.72^{.80}' S.E. To ⊗ on ctr. wing wall 34.24^{.20}' S.S.W. To ⊗ on step of Abut 41.85' N.E. To Shi. Tel. Pole 38.50' S.W. To W. end Abut. 102.65' E.S.E. TO N.W. COR. Abut. wall</p>	
#30	<p>Intersection S.R. #109 & 281 Boat spk. S.E. COR. SEC. 22 R.R. SPK. (22)</p>		<p>41.78' N.E. To ⊗ on S. side Hwy 44.77' S.E. To ⊗ on N. side Hwy 63.30' N.W. To spk. in Tel. Pole 42.69' S.W. To spk. in Power Pa</p>	
#31	<p>1/4 stone E</p>			

O.D.O.T. DISTRICT 2 SURVEY OFFICE

PERSONNEL

REFERENCE NO. 20-A

SHEET 16 OF

NOTES SACKMAN

H.C. BARNHISEL

R.C. LOEHRKE

DATE 8-12-87

WEATHER CLEAR

TEMP. + 82

ROUTE SR 281

COUNTY HENRY

TOWNSHIP MONROE

SECTION 22

T4 N R 7 E

TYPE MONUMENT P.K. Nail

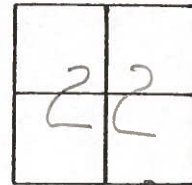
ON SURFACE - BELOW 1 1/2"

LEFT- & PAV'T. - RIGHT 0.6

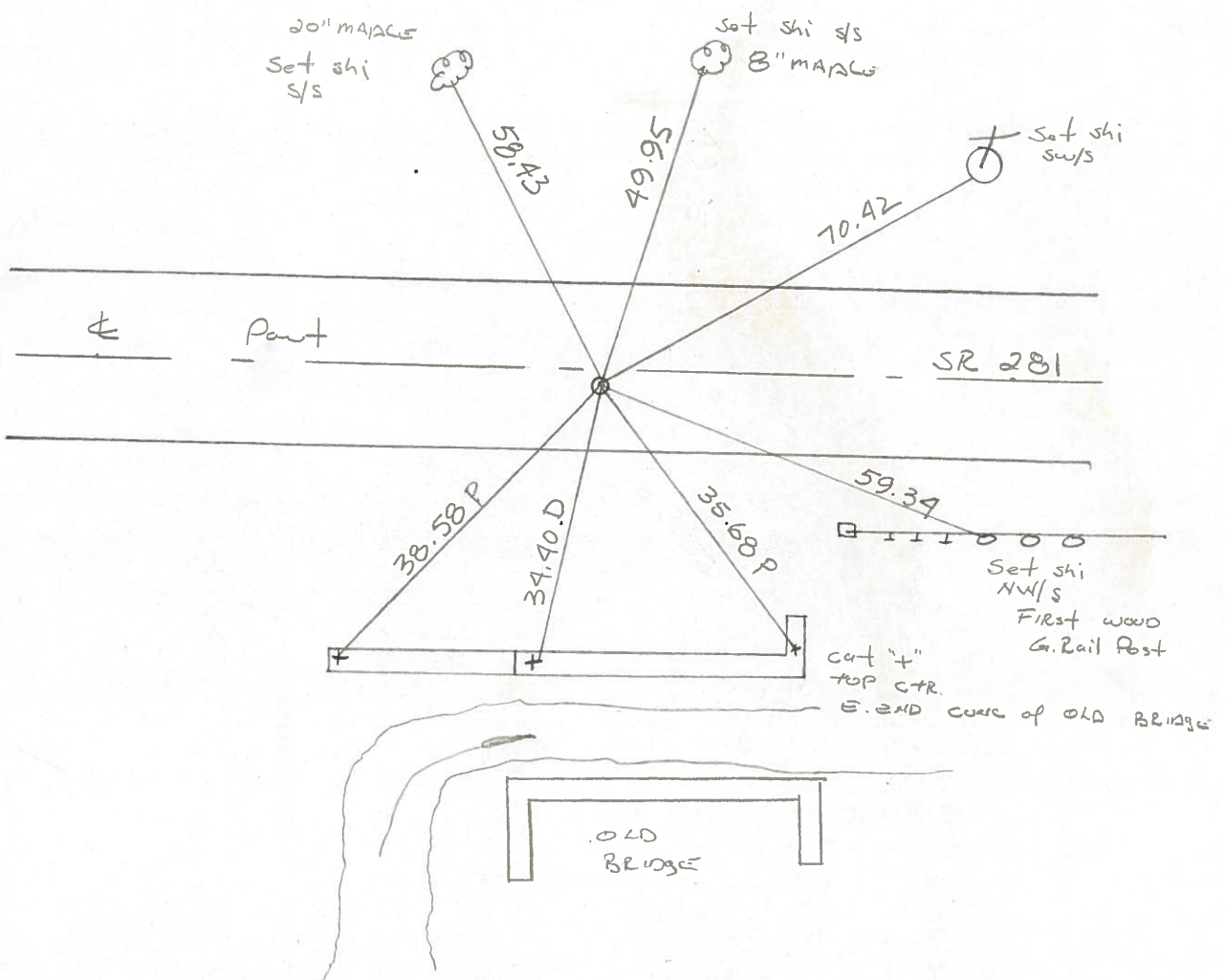
9.4 TO RT EDGE PAVEMENT

S.L.M. 509+89

Set Sm. RR
 Spike
 9-2-87

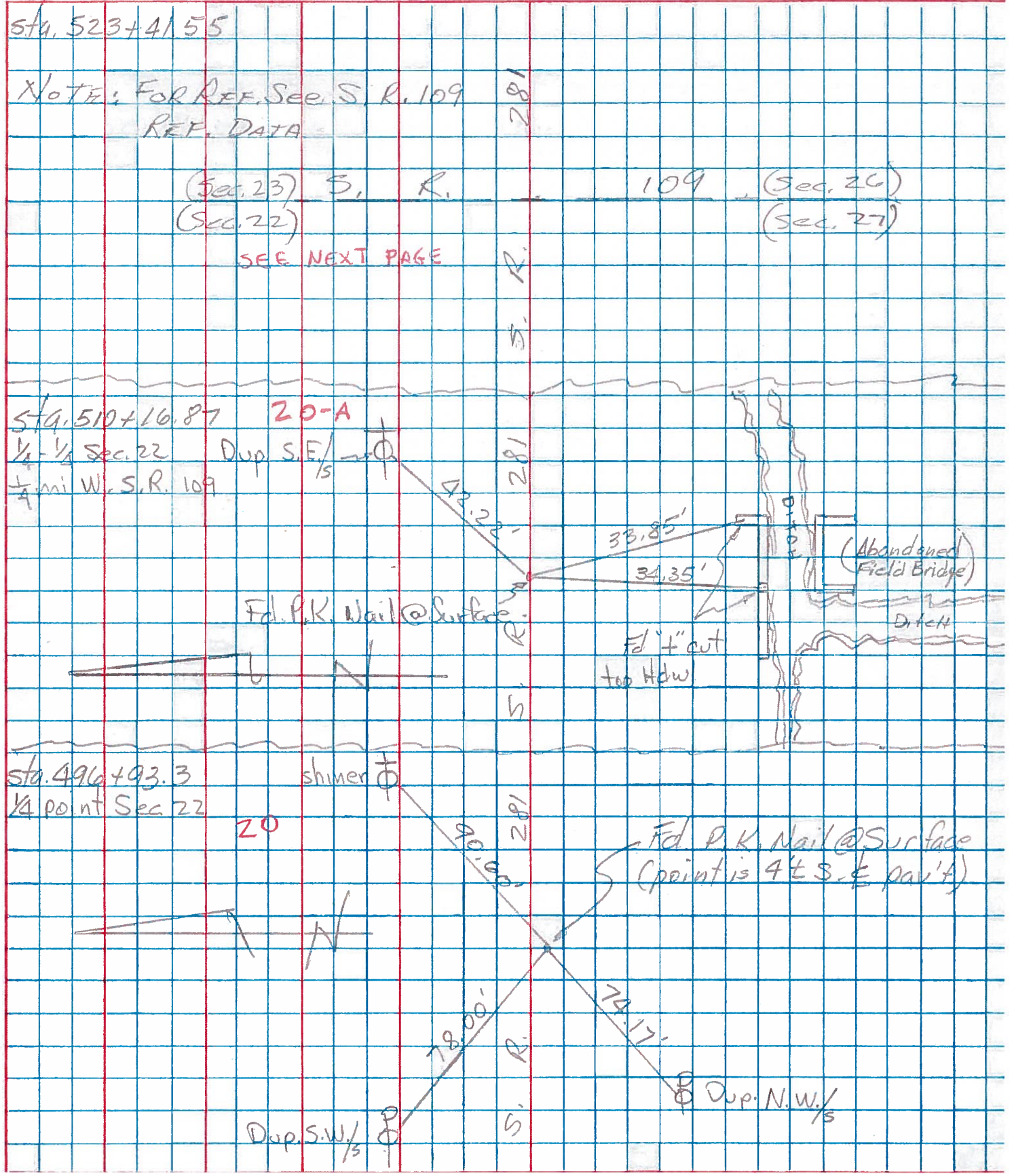


Record!
 Sta. 510+16.87
 1/4-1/4 Sec. 22



PERSONNEL	TITLE	PERSONNEL	TITLE	COUNTY	DATE	S. R.	WEATHER	TEMP.
Tomsic				HENRY	Nov. 19, 1974	281		
Neuser								
Vanyo								
Granata								

DESCRIPTION	LEFT	CENTER LINE	RIGHT	JOB NO.
-------------	------	-------------	-------	---------



PERSONNEL	TITLE	PERSONNEL	TITLE

COUNTY Henry DATE 11-29-57
11-3-60
 S. R. 281 WEATHER _____
 SEC. "J" TEMP. _____

DESCRIPTION _____ LEFT _____ CENTER LINE _____ RIGHT _____ JOB NO. _____

DESCRIPTION	LEFT	CENTER LINE	RIGHT	JOB NO.
#27	1/4-1/4 COR. Iron bolt R.R. SPK. (19-A)	gone	gone	52.00' N.E. spk. in 3rd E.P. E. of COR. Post 54.63' N. To spk. in 1st E.P. N. COR. Post 39.55' S. To spk. in COR. Post 35.07' S. Shi. P. Pole 68.48' N.W. steel Post (Bent)
#28	1/4 COR. stone R.R. SPK. (20)	Plum	91.00' N.E. To spk. in Tel. Pole 76.47' N.W. To spk. in Tel. Pole 45.00' N. To 1" Gas Pipe 28.08 N.W. To S.W. COR. C.B. CURB.	
#29	1/4-1/4 COR. R.R. SPK. (20-A)		33.72' S.E. To ⊗ on ctr. wing wall 34.24' S.S.W. To ⊗ on step of Abut 41.85' N.E. To Shi. Tel. Pole 38.50' S.W. To W. end Abut. 102.65' E.S.E. To N.W. COR. Abut. wall	
#30	Intersection S.R. #109 & 281 Boat spk. S.E. COR. SEC. 22 R.R. SPK. (22)		41.78' N.E. To ⊗ on S. side Hdwy 44.77' S.E. To ⊗ on N. side Hdwy 63.30' N.W. To spk. in Tel. Pole 42.69' S.W. To spk. in Power Pa	
#31	1/4 stone E			