

O.D.O.T. DISTRICT 2 SURVEY OFFICE (USE ONLY)

PERSONNEL

REFERENCE NO. 22

SHEET 15 OF 34

NOTES RHOADES

DATE 9/6/18

ROUTE SR 281

H.C. O'DONNELL

WEATHER FAIR

COUNTY HENRY

R.C. RHOADES

TEMP. 70°

TOWNSHIP MONROE

SECTION 23

DWG BY NIESE PID PAVETRAIN

T 4 N R 7 E

TYPE MONUMENT R.R. SPIKE

~~ON SURFACE~~ - BELOW 1 1/2"

OFFSET \odot PAVEMENT ON LT : RT

- TO - EDGE PAVEMENT 8.0' LT OF \odot SR 109

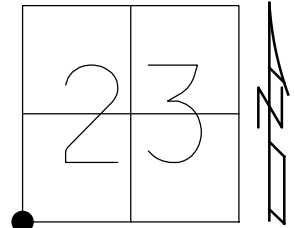
STATION: 523+38

HORZ. DATUM: NAD83(2011)

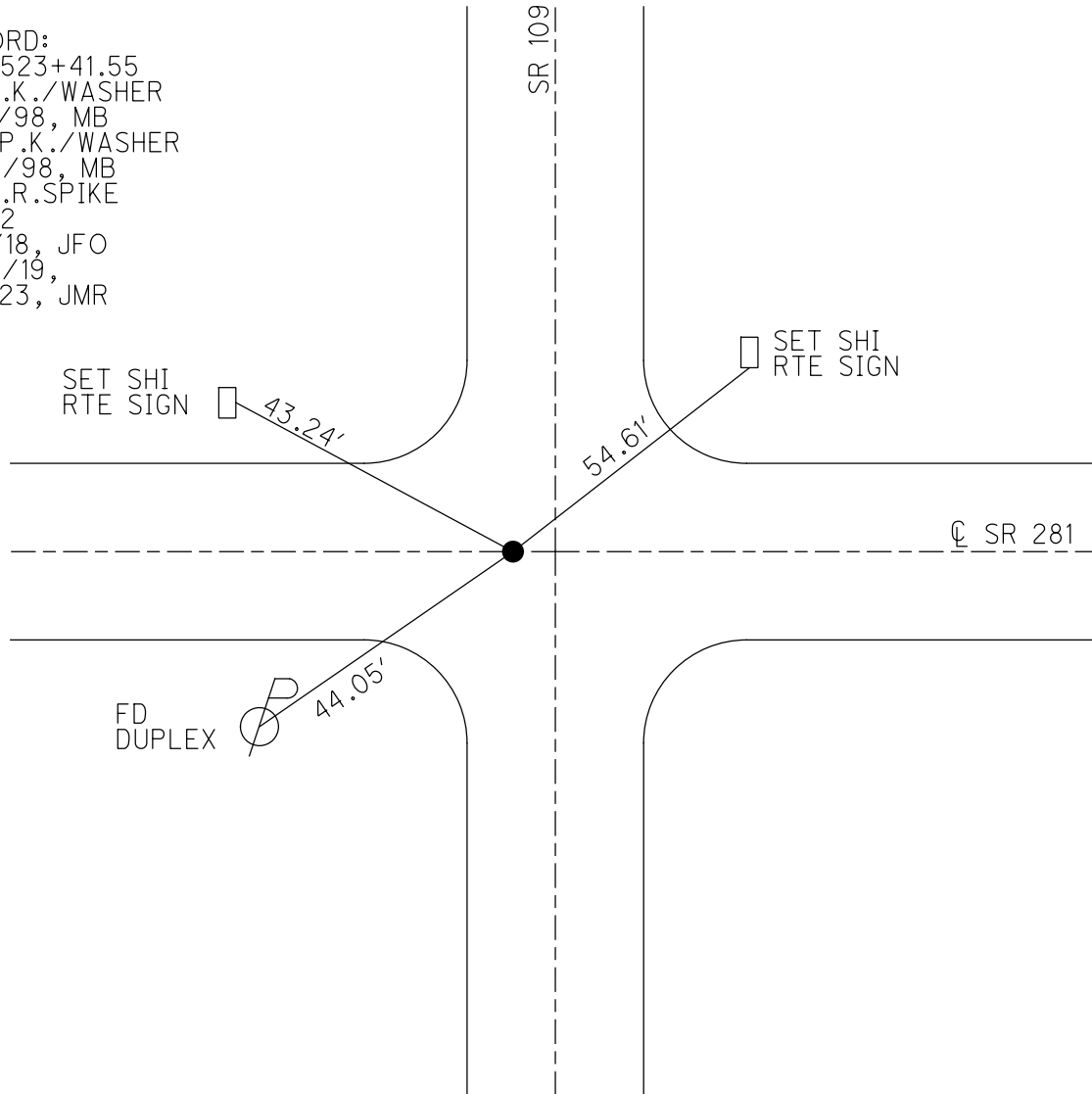
GEOID: 2012A

GRID: NORTHING: 592634.363

EASTING: 1546102.887



RECORD:
 STA 523+41.55
 FD P.K./WASHER
 8/18/98, MB
 SET P.K./WASHER
 9/28/98, MB
 FD R.R. SPIKE
 REF 22
 9/6/18, JFO
 7/25/19,
 1/11/23, JMR



O.D.O.T. DISTRICT 2 SURVEY OFFICE (USE ONLY)

PERSONNEL

REFERENCE NO. 22

SHEET 15 OF 34

NOTES RHOADES

DATE 9/6/18

ROUTE SR 281

H.C. O'DONNELL

WEATHER FAIR

COUNTY HENRY

R.C. RHOADES

TEMP. 70°

TOWNSHIP MONROE

SECTION 23

DWG BY NIESE

PID CHIP_2

T 4 N R 7 E

TYPE MONUMENT R.R. SPIKE

~~ON SURFACE~~ - BELOW 1 1/2"

OFFSET C PAVEMENT ON LT : RT

- TO - EDGE PAVEMENT 8.0' LT OF C SR 109

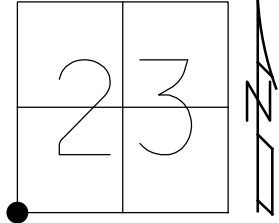
STATION: 523+38

HORZ.DATUM: NAD83(2011)

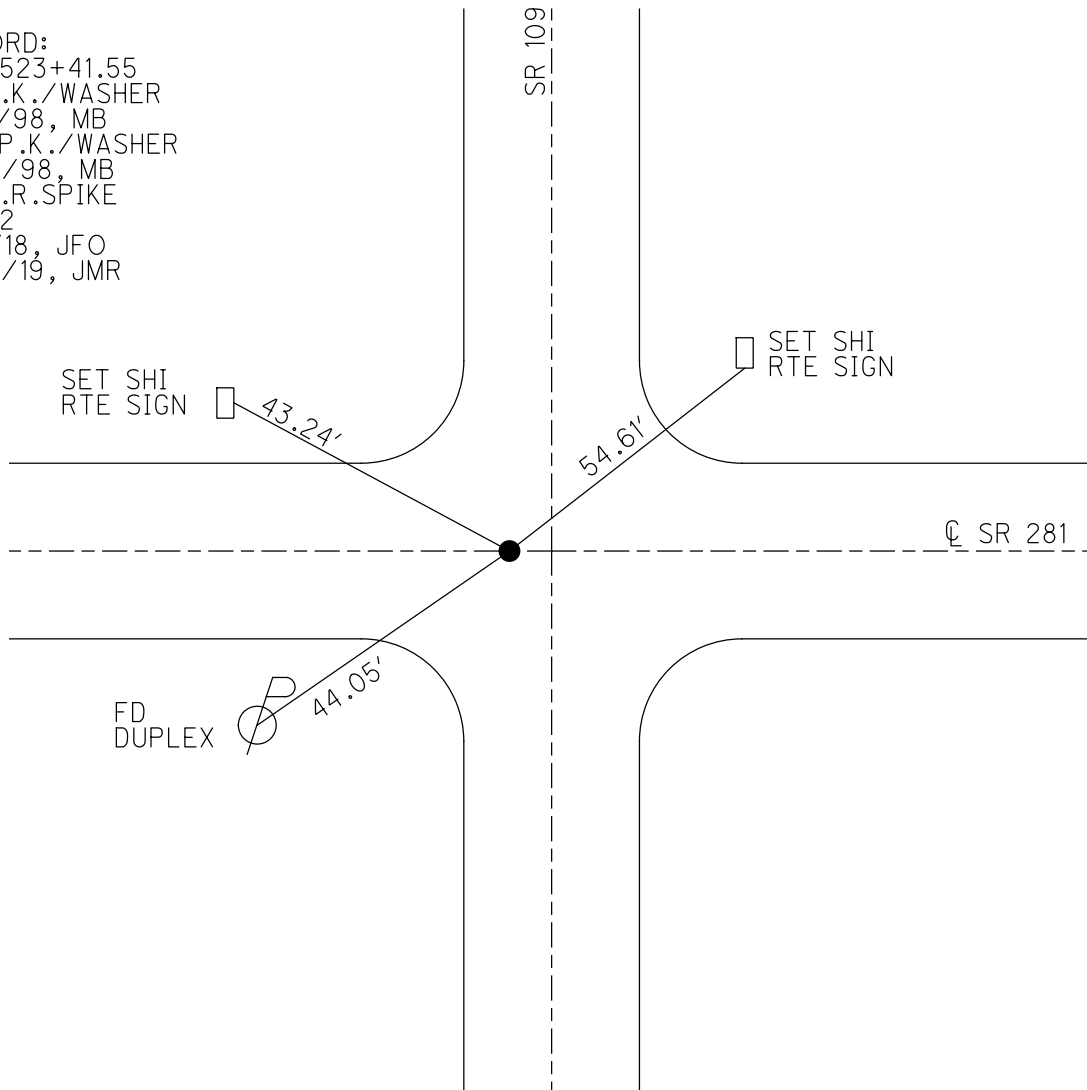
GEOID: 2012A

GRID: NORTHING: 592634.363

EASTING: 1546102.887



RECORD:
 STA 523+41.55
 FD P.K./WASHER
 8/18/98, MB
 SET P.K./WASHER
 9/28/98, MB
 FD R.R.SPIKE
 REF22
 9/6/18, JFO
 7/25/19, JMR



O.D.O.T. DISTRICT 2 SURVEY OFFICE

PERSONNEL

NOTES Huss
 H.C. BARNHISEL
 R.C. ROUSOS

REFERENCE NO. 22
 S.R. 109 = 18

SHEET 17 OF 34

DATE 8-18-98
 WEATHER FAIR
 TEMP. +84°F

ROUTE S.R. # 281
 COUNTY HENRY
 TOWNSHIP MONROE
 SECTION 23
 T 4 N R 7 E

TYPE MONUMENT P.K. / WASHER
 ON SURFACE - BELOW SURFACE
~~LEFT - & PAV'T. - RIGHT~~ ON &
TO EDGE PAVEMENT 8.0' LT OF S.R. 109 & PAVT
 S.L.M. S.R. 281 = 523+14 / S.R. 109 = 422+85

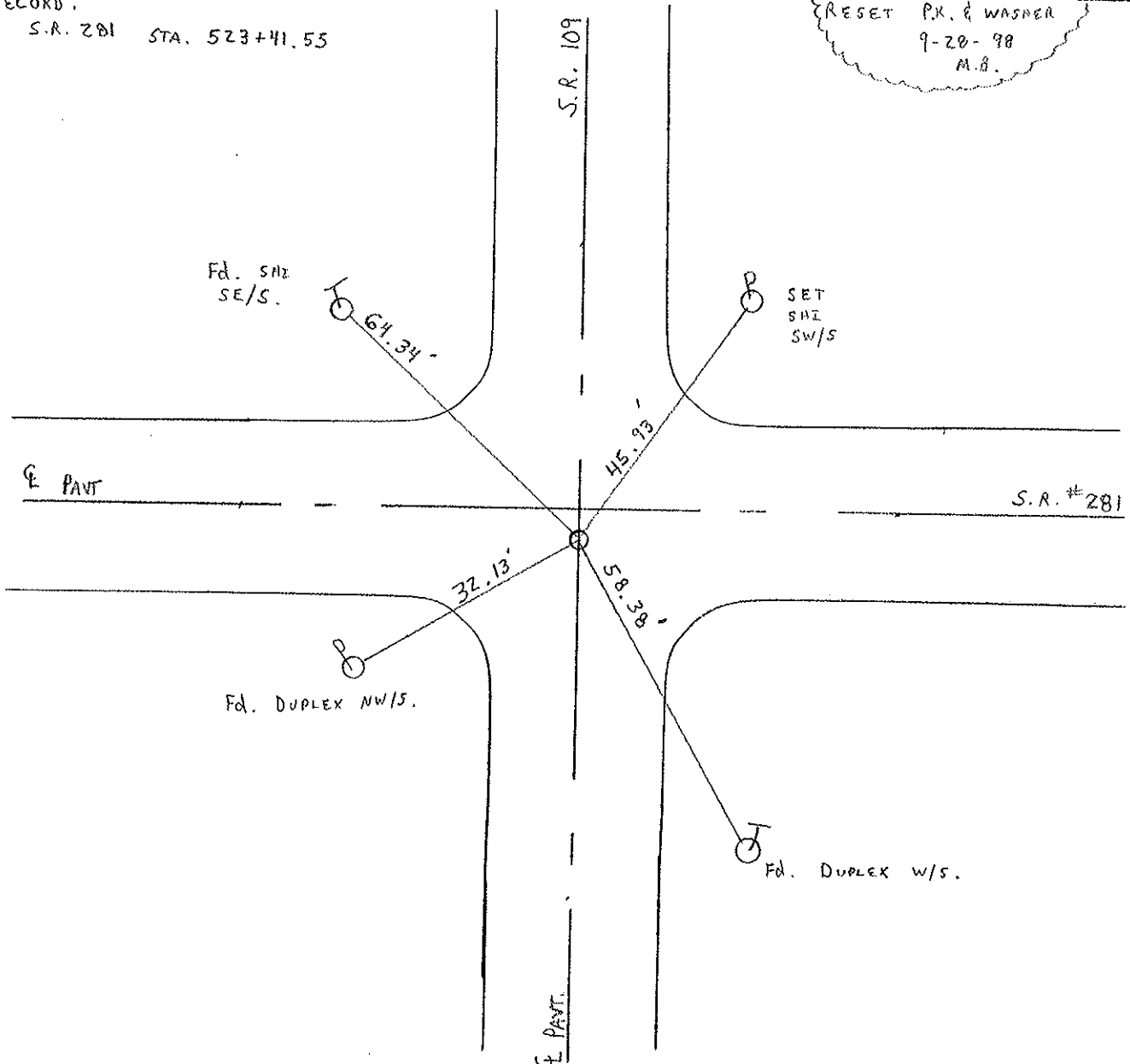
22	23
27	26



RECORD:

S.R. 281 STA. 523+41.55

RESET P.K. & WASHER
 9-20-98
 M.B.



O.D.O.T. DISTRICT 2 SURVEY OFFICE

PERSONNEL

REFERENCE NO. 22
SR 109 = 18

SHEET 17 OF

NOTES See KMAN

H.C. BARNHISEL

DATE 8-12-87

ROUTE SR 281

R.C. LOHRKE

WEATHER CLEAR

COUNTY HENRY

TEMP. +85

TOWNSHIP MONROE

SECTION 23

T4 N R 7 E

TYPE MONUMENT P.K. / washer

ON SURFACE - BELOW YES

LEFT - & PAVT. - RIGHT YES ON 281

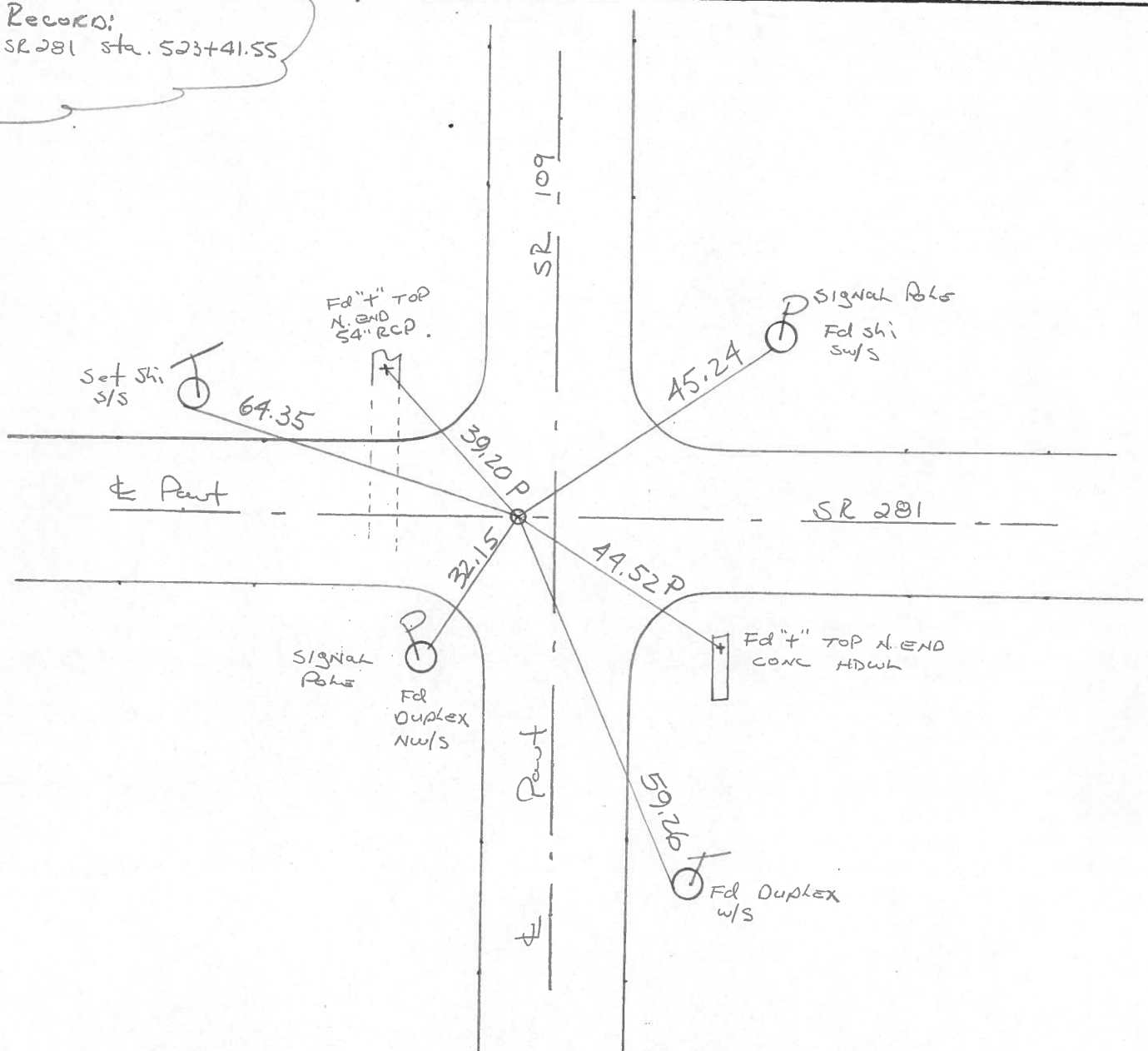
 TO EDGE PAVEMENT 7.8' Lt. (West) & Pavt SR 109

S.L.M. SR 281 = 523 + 14 SR 109 = 422 + 85

22	23
27	26



Records:
SR 281 sta. 523 + 41.55



COUNTY HENRY S.R. 281

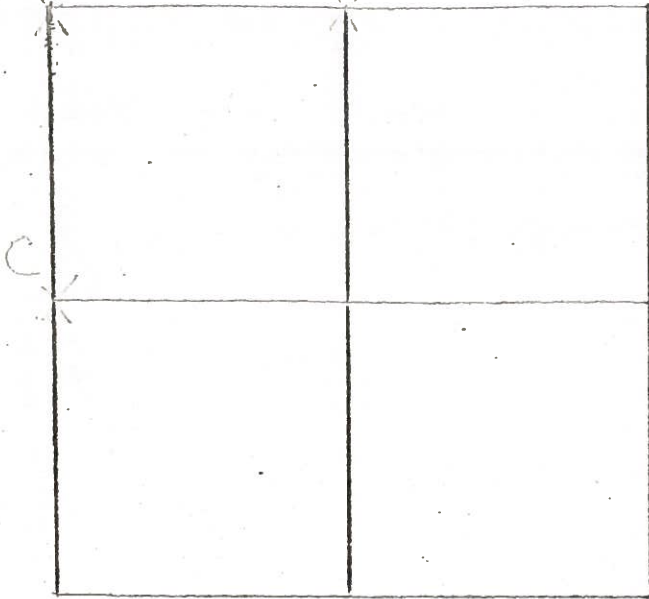
T 4 SHEET 1 OF 2 N R 17 E

TOWNSHIP MONROE

SECTION 26

A 22 A

B 22A



7-2-79 R.W. J.J. G.M.

A- FOUND BOATSPIKE OVER
 R.R. SPIKE 15' WEST OF
 TOP CENTER OF STONE (7'x9'x12")
 20" BELOW ROAD SURFACE.

REMOVED BOATSPIKE AND R.R.
 SPIKE AND PLACED CENTER
 PINCHED R.R. SPIKE ON SURFACE
 OVER TOP CENTER OF STONE

P.K. SET 6' N. & W.

63.64'	N.W.	TO SHWER	N.E./S	⊥
86.98'	N.N.E.	TO SHWER	S.W./S	⊥
59.21'	S.S.E.	TO SHWER	W/S	⊥
32.22'	S.W.	TO SHWER	N/S	⊥

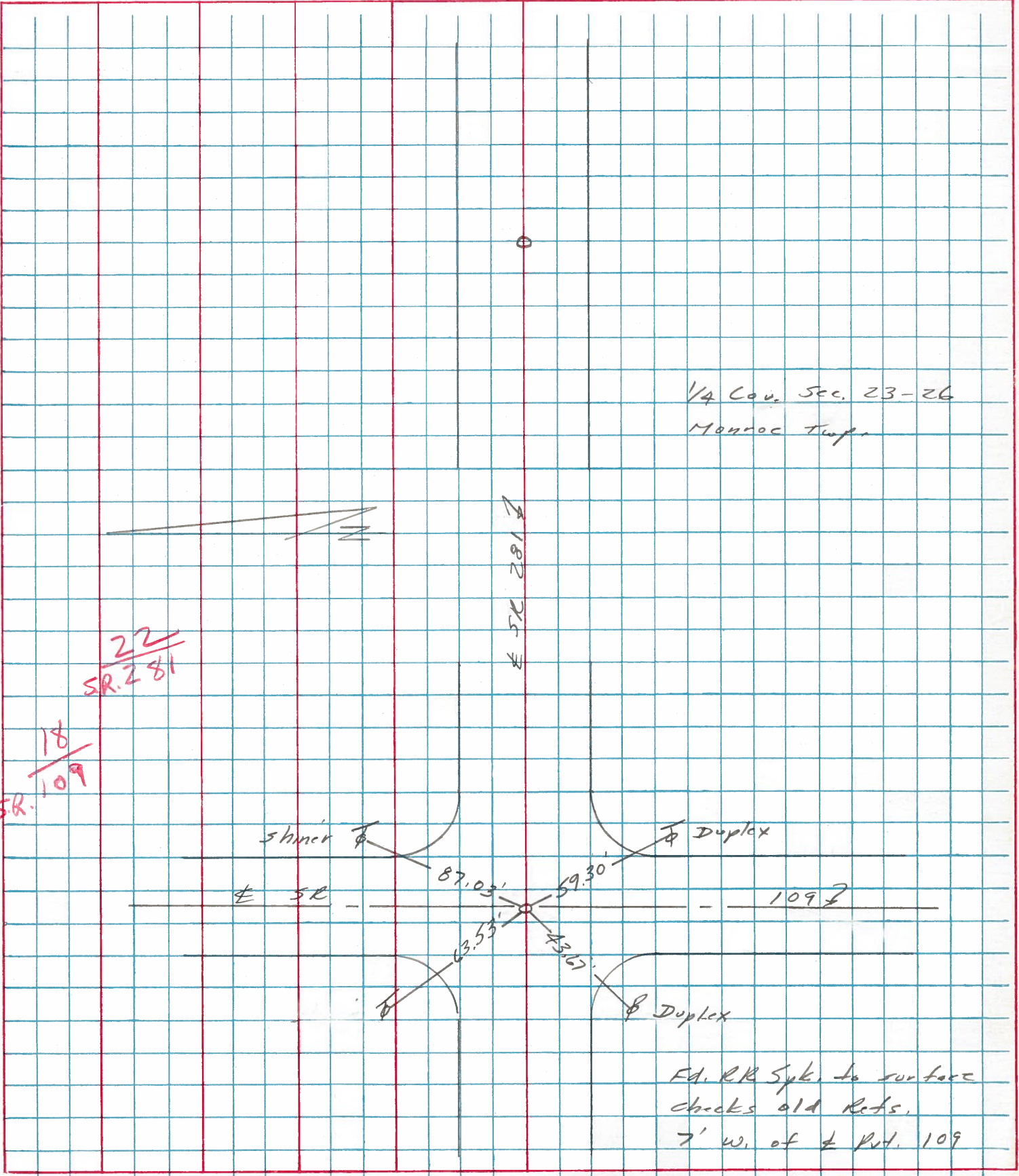
R.R. SPIKE @ SURFACE
 -12-7-81
 S.W.H.

BRACE FILE

PERSONNEL	TITLE	PERSONNEL	TITLE	COUNTY	DATE	WEATHER	TEMP.
Stone				Henry	18 April 77	Warms	72°
				S. R. 281			
Crew				SEC.			

DESCRIPTION References to Control Points JOB NO. _____

LEFT CENTER LINE RIGHT



PERSONNEL	TITLE	PERSONNEL	TITLE

COUNTY Henry DATE 11-29-57
 S. R. 281 WEATHER 11-3-60
 SEC. "J" TEMP.

DESCRIPTION	LEFT	CENTER LINE	RIGHT	JOB NO.
#27	<p>1/4-1/4 COR. Iron bolt R.R. SpK. (19-A)</p>	<p>gone gone</p>	<p>52.00' N.E. SpK. in 3rd E.P. E. of COR. Post 54.63' N. To SpK. in 1st E.P. N. COR. Post 39.55' S. To SpK. in COR. Post 35.07' S. Shi. Pole 68.48' N.W. Steel Post (Bent)</p>	
#28	<p>1/4 COR. stone R.R. SpK. (20)</p>	<p>Plum</p>	<p>91.00' N.E. To SpK. in Tel. Pole 76.47' N.W. To SpK. in Tel. Pole 45.00' N. To 1" Gas Pipe 28.08 N.E. TO S.W. COR. C.B. CURB.</p>	
#29	<p>1/4-1/4 COR. R.R. SpK. (20-A)</p>		<p>33.72^{.80} S.E. To ⊗ on ctr. wing wall 34.24^{.20} S.S.W. To ⊗ on step of Abut 41.85' N.E. To Shi. Tel. Pole 38.50' S.W. To W. end Abut. 102.65' E.S.E. TO N.W. COR. Abut. wall</p>	
#30	<p>Intersection S.R. #109 & 281 Boat SpK. S.E. COR. SEC. 22 R.R. SpK. (22)</p>		<p>41.78' N.E. To ⊗ on S. side Hwy 44.77' S.E. To ⊗ on N. side Hwy 63.30' N.W. To SpK. in Tel. Pole 42.69' S.W. To SpK. in Power Pa</p>	
#31	<p>1/4 stone E</p>			