

O.D.O.T. DISTRICT 2 SURVEY OFFICE (USE ONLY)

PERSONNEL

REFERENCE NO. 22 A

SHEET 16 OF 34

NOTES RHOADES DATE 9/6/18

H.C. O'DONNELL WEATHER FAIR

R.C. RHOADES TEMP. 76°

ROUTE SR 281

COUNTY HENRY

TOWNSHIP MONROE

SECTION 23

DWG BY NIESE PID PAVETRAIN

T 4 N R 7 E

TYPE MONUMENT P.K.NAIL

ON SURFACE - ~~BELOW~~ ON

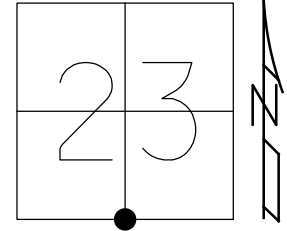
OFFSET ☉ PAVEMENT ON LT : RT

10.6' TO RT EDGE PAVEMENT

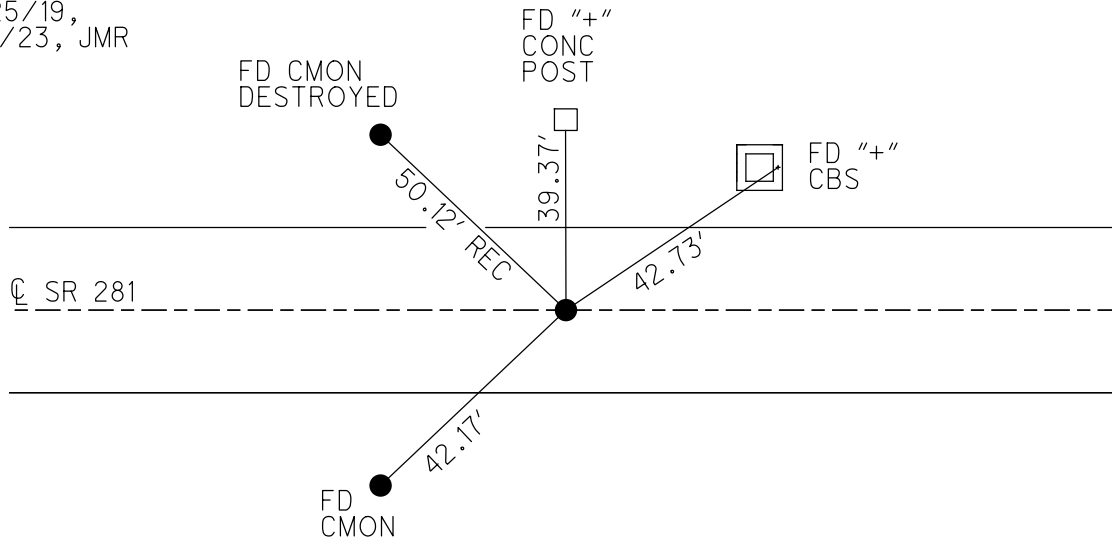
STATION: 549+61

HORZ.DATUM: NAD83(2011) GEOID: 2012A

GRID: NORTHING: 592631.828 EASTING: 1548748.942



RECORD:
 FD SM.R.R.SPIKE
 5/28/98, MC
 SET P.K./WASHER
 10/1/98, MRC
 FD P.K.NAIL
 REFA22
 9/6/18, JFO
 7/25/19,
 1/11/23, JMR



O.D.O.T. DISTRICT 2 SURVEY OFFICE (USE ONLY)

PERSONNEL

REFERENCE NO. 22 A

SHEET 16 OF 34

NOTES RHOADES DATE 9/6/18

H.C. O'DONNELL WEATHER FAIR

R.C. RHOADES TEMP. 76°

ROUTE SR 281

COUNTY HENRY

TOWNSHIP MONROE

SECTION 23

DWG BY NIESE PID CHIP_2

T 4 N R 7 E

TYPE MONUMENT P.K.NAIL

ON SURFACE - ~~BELOW~~ ON

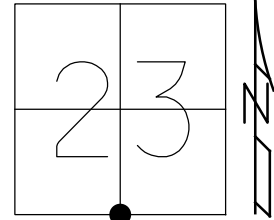
OFFSET Q PAVEMENT ON LT : RT

10.6' TO RT EDGE PAVEMENT

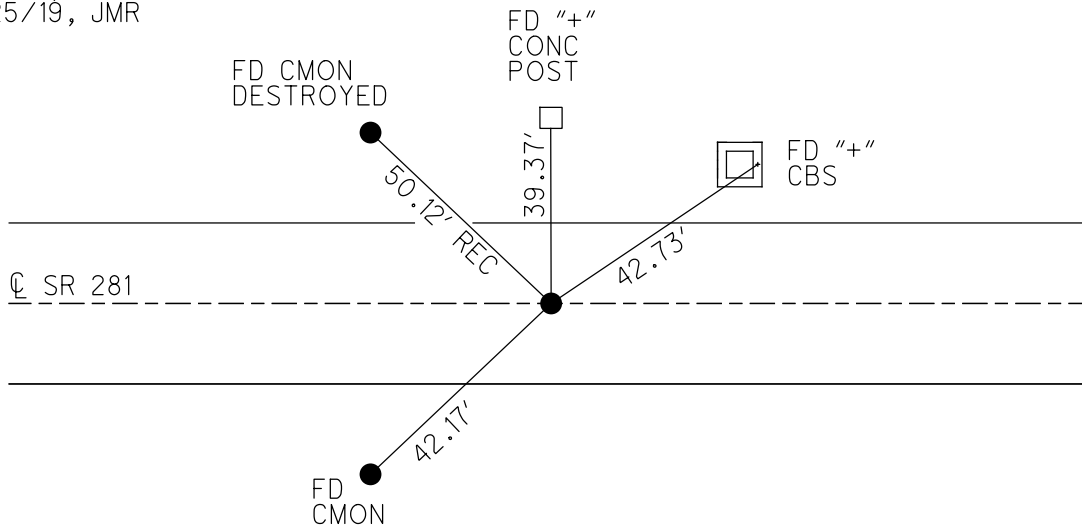
STATION: 549+61

HORZ.DATUM: NAD83(2011) GEOID: 2012A

GRID: NORTHING: 592631.828 EASTING: 1548748.942



RECORD:
 FD SM.R.R.SPIKE
 5/28/98, MC
 SET P.K./WASHER
 10/1/98, MRC
 FD P.K.NAIL
 REFA22
 9/6/18, JFO
 7/25/19, JMR



O.D.O.T. DISTRICT 2 SURVEY OFFICE

PERSONNEL

REFERENCE NO. 22-A

SHEET 18 OF 34

NOTES Canterbury

H.C. Rousos

R.C. Nuffer

DATE 5-28-98

WEATHER FAIR

TEMP. +75°F

ROUTE SR 281

COUNTY HENRY

TOWNSHIP MONROE

SECTION 23

T. 4 N. R. 7 E

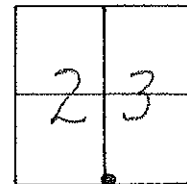
TYPE MONUMENT Sm. RR. Spike

ON SURFACE - BELOW Surface

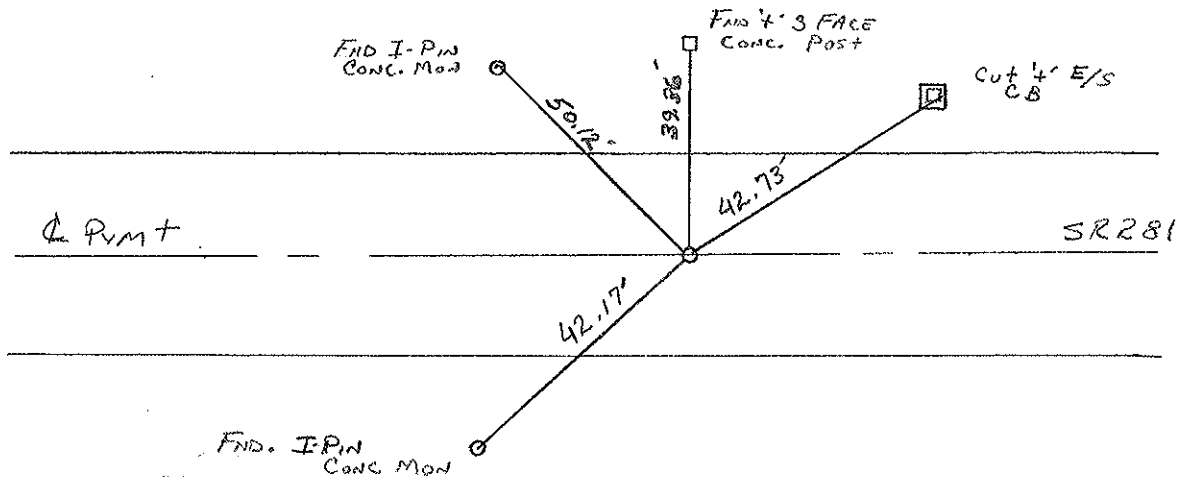
LEFT - ☉ PAV'T. - RIGHT ☉

10.6 FT. EDGE PAVEMENT

S.L. #. 16+755.10 SLK (549+61 SLM)



RESET PK & WASHER
10-1-98
MAC



DRAWN BY TR

O.D.O.T. DISTRICT 2 SURVEY OFFICE

PERSONNEL

REFERENCE NO. 22-A

SHEET 18 OF

NOTES S. KMAN

H.C. BARWISSE

R.C. LOENK

DATE 8-13-87

WEATHER HAZY

TEMP. 72

ROUTE SR 281

COUNTY HENRY

TOWNSHIP MONROE

SECTION 23

T 4 N R 7 E

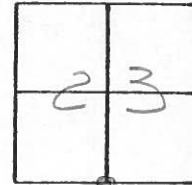
TYPE MONUMENT SMALL RR SPIKE

ON SURFACE - BELOW YES

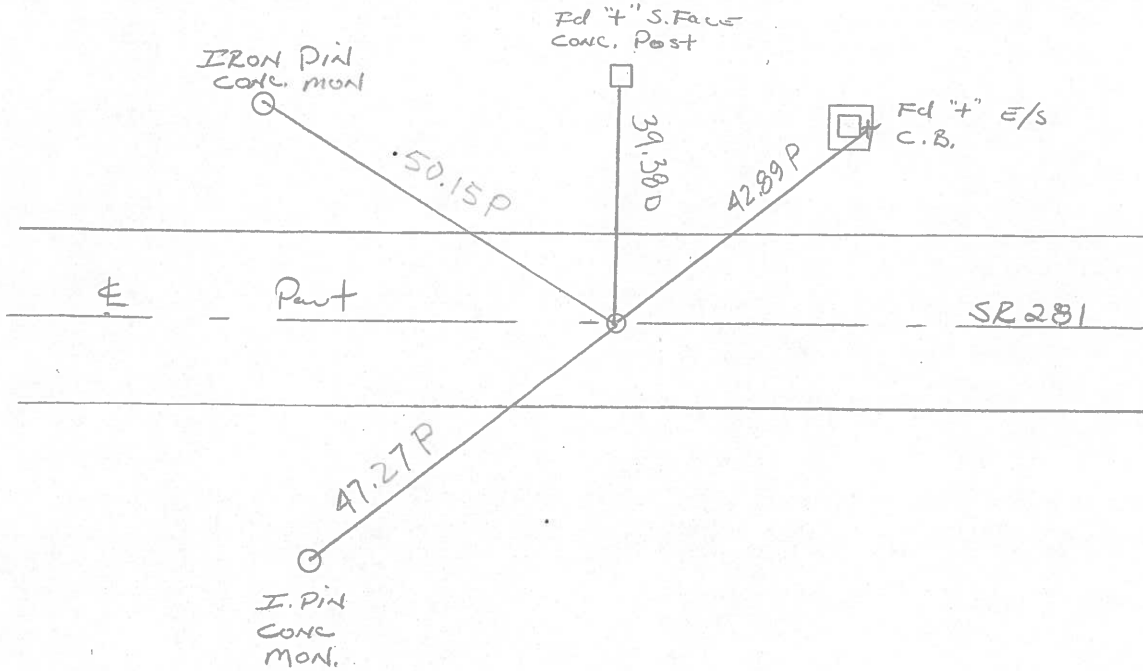
LEFT - CL PAV'T. - RIGHT YES

9.7 TO + EDGE PAVEMENT

S.L.M. 549+61



SET Sm. RR Spike
 9-2-87
 C.L.

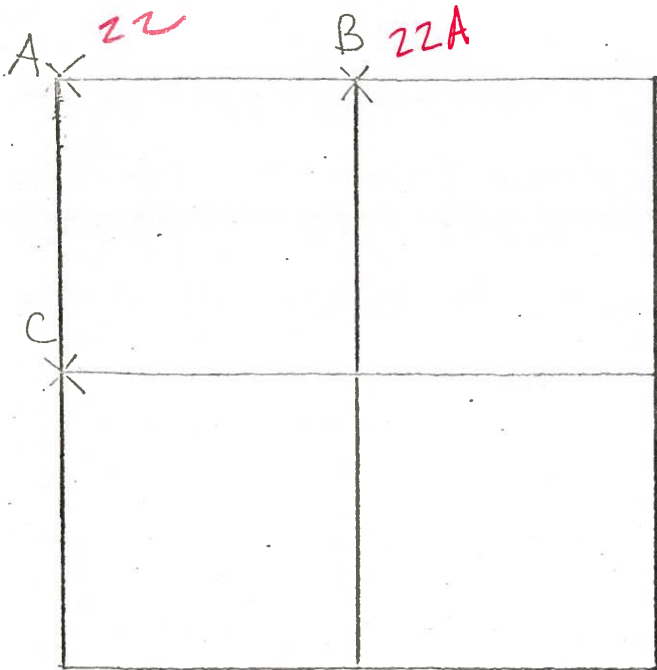


COUNTY HENRY S.R. 281

T 4 N 7 E SHEET 2 OF 2

TOWNSHIP MONROE

SECTION 26



7-16-79 R.W. G.M. J.J.
 C. - DUG FOR STONE USING
 RECORDED WITNESS TIES;
 DID NOT FIND STONE
 RE-ESTABLISHED CORNER BY
 SINGLE PROPORTIONATE
 MEASUREMENT ALONG WEST
 LINE OF SECTION 26 MONROE
 TWP. PLACED CENTER-PUNCHED

R.R. SPIKE ON SURFACE. P.K.'s SET 6' N.E. &
 S.E. R.R. SPIKE IS LOCATED 1.0' WEST OF WEST
 EDGE OF 18' PAVEMENT

29.32' W. TO DUPLEX N/S. P
 36.66' E. TO DUPLEX N/S. WOOD POST
 79.38' S.S.E. TO DUPLEX W/S. J

6-5-79 R.W. J.J. G.M. { ¹²⁻⁷⁻⁸¹ OK. SMALL R.R. SPIKE @ SURFACE

B - FOUND RECORDED SPIKE OVER STONE (10" x 11" x DEPTH?)
 32" BELOW ROAD SURFACE. 24" TO OLD ROAD BED. PLACED
 CENTER PUNCHED R.R. SPIKE ON SURFACE OVER HIGH POINT
 OF STONE. STONE IS LOCATED 9.7' SOUTH OF NORTH
 EDGE OF 19' PAVEMENT. P.K.'s SET 6' S. & W.
 39.36' N. TO "+" SOUTH SIDE CONCRETE CORNER POST
 50.13' N.W. TO IRON PIN IN CONCRETE MONUMENT (PLUMBED)
 47.43' S.W. TO IRON PIN IN CONCRETE MONUMENT (PLUMBED)

Q.D.O.T. DISTRICT 2 SURVEY OFFICE

Sht. 1 of

County Henry S.R. 281

Date 5-18-1979

Township Monroe

Weather Clear

Section S $\frac{1}{4}$ Cor. Sec. 23

Temp. 78°

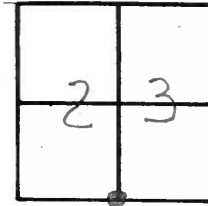
T4N, R7E

Personnel Smith

Knape

Bowers

Mead



22 A

