

O.D.O.T. DISTRICT 2 SURVEY OFFICE (USE ONLY)

PERSONNEL

REFERENCE NO. 22 AB

SHEET 17 OF 34

NOTES CANTERBURY

DATE 5/28/98

ROUTE SR 281

H.C. ROUSOS

WEATHER FAIR

COUNTY HENRY

R.C. NUHFER

TEMP. 75°

TOWNSHIP MONROE

DWG BY NIESE

PID PAVETRAIN

SECTION 24

T 4 N R 7 E

TYPE MONUMENT SM.R.R.SPIKE

ON SURFACE - ~~BELOW~~ ON _____

OFFSET \odot PAVEMENT 2.8' ~~±~~ : RT

- TO - EDGE PAVEMENT

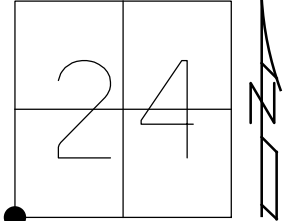
STATION: 576+06

HORZ.DATUM: -

GEOID: -

GRID: NORTHING: -

EASTING: -



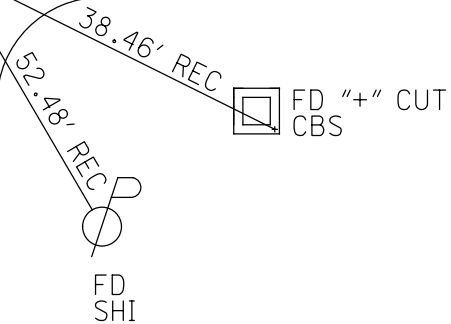
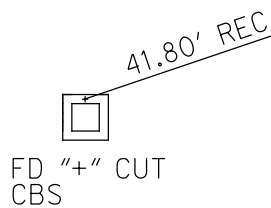
RECORD:
 FD R.R.SPIKE,
 SET BY COUNTY
 OVER STONE
 6/5/79
 FD SM.R.R.SPIKE
 5/28/98, MC
 SET P.K./WASHER
 10/1/98, MC
 DNF
 9/6/18, JFO
 1/11/23, JMR

\odot CR 8

DIST. 22AB-22B= 1.88' REC

\odot SR 281

● 22B



O.D.O.T. DISTRICT 2 SURVEY OFFICE (USE ONLY)

PERSONNEL

REFERENCE NO. 22 AB

SHEET 17 OF 34

NOTES CANTERBURY

DATE 5/28/98

ROUTE SR 281

H.C. ROUSOS

WEATHER FAIR

COUNTY HENRY

R.C. NUHFER

TEMP. 75°

TOWNSHIP MONROE

SECTION 24

DWG BY NIESE

PID CHIP_2

T 4 N R 7 E

TYPE MONUMENT SM.R.R.SPIKE

ON SURFACE - ~~BELOW~~ ON

OFFSET \downarrow PAVEMENT 2.8' ~~ET~~ : RT

- TO - EDGE PAVEMENT

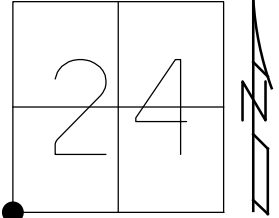
STATION: 576+06

HORZ.DATUM: -

GEOID: -

GRID: NORTHING: -

EASTING: -



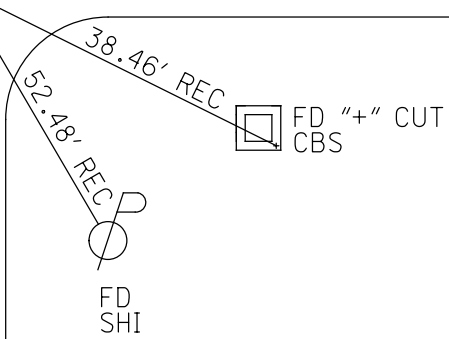
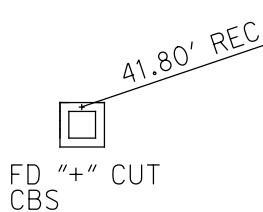
RECORD:
 FD R.R.SPIKE,
 SET BY COUNTY
 OVER STONE
 6/5/79
 FD SM.R.R.SPIKE
 5/28/98, MC
 SET P.K./WASHER
 10/1/98, MC
 DNF
 9/6/18, JFO

C.R. 8

DIST. 22AB-22B= 1.88' REC

\downarrow SR 281

● 22B



O.D.O.T. DISTRICT 2 SURVEY OFFICE

PERSONNEL

REFERENCE NO. 22-B

SHEET 19 OF 34

NOTES Centerbury

H.C. Rousos

R.C. Nuffer

DATE 5-28-98

WEATHER Fair

TEMP. +75°

ROUTE SR 281

COUNTY HENRY

TOWNSHIP MONROE

SECTION 24

T4 N R 7 E

TYPE MONUMENT A - Sm. RR spike / B - Sm. RR spike

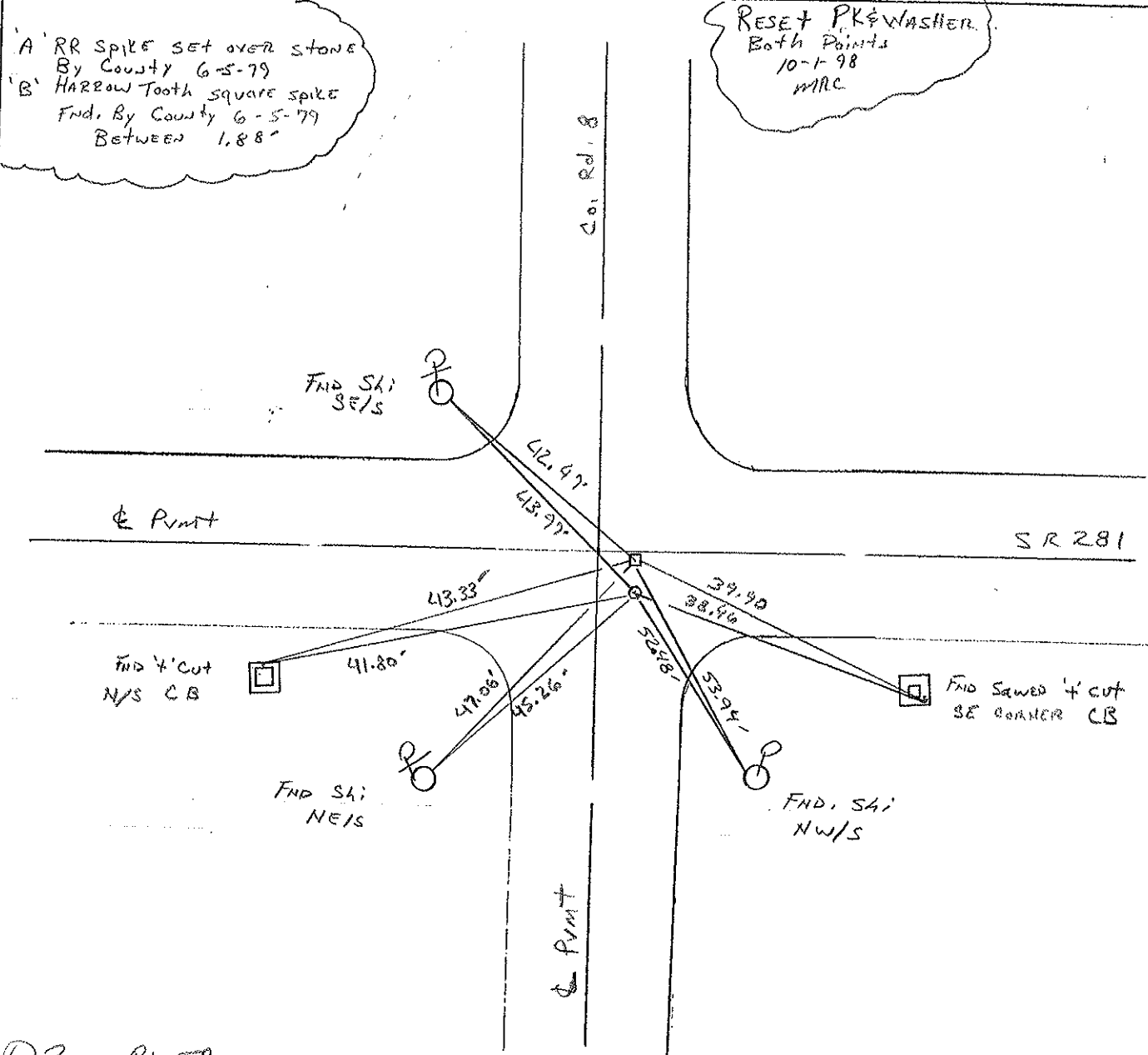
ON SURFACE - BELOW Surface

LEFT - ☉ PAV'T. - RIGHT A 2.8' Rt / B 1.0' Rt ☉

— JO — EDGE PAVEMENT

S.L. A 171560.005 SLK, B 171560.000 SLK (576+06 slm)

23	24
26	25



Drawn By TR

O.D.O.T. DISTRICT 2 SURVEY OFFICE

PERSONNEL _____

REFERENCE NO. 22-B

SHEET 19 OF _____

NOTES Sackman

H.C. BARN HISCO

R.C. LOENRKE

DATE 8-13-87

WEATHER HAZY

TEMP. +72

ROUTE SR 281

COUNTY HENRY

TOWNSHIP MONROE

SECTION 24

T4 NR 7 E

Set Sm RR Spikes "A" "B"
 TYPE MONUMENT R.R. SPIKE / HARROW TOOTH SPIKE
 ON SURFACE - BELOW 1/2" / 1/2"
 LEFT- & PAV'T. - RIGHT 2.5' / 0.7'
 TO EDGE PAVEMENT 3.2' East of & Part Co. Rd "8" North
 S.L.M. 576 +06

23	24
26	25



"A" RR SPK set OVER STONE
 BY COUNTY 6-5-79
 "B" HARROW TOOTH, SQUARE SPIKE
 Fd BY COUNTY 6-5-79
 BETWEEN 1.88

BETWEEN: 688

Set Sm. RR. Spikes
 9-2-87
 C.L.

