

O.D.O.T. DISTRICT 2 SURVEY OFFICE (USE ONLY)

PERSONNEL _____

REFERENCE NO. 23

SHEET 19 OF 34

NOTES RHOADES

DATE 9/6/18

ROUTE SR 281

H.C. O'DONNELL

WEATHER FAIR

COUNTY HENRY

R.C. RHOADES

TEMP. 76°

TOWNSHIP MONROE

SECTION 24

DWG BY NIESE

PID PAVETRAIN

T 4 N R 7 E

TYPE MONUMENT P.K. SHANK

ON SURFACE - ~~BELOW~~ ON

OFFSET ☉ PAVEMENT ON LT : RT

10.4' TO RT EDGE PAVEMENT

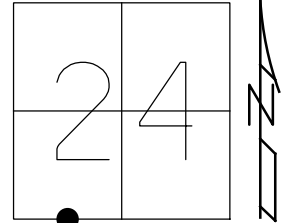
STATION: 589+31

HORIZ.DATUM: NAD83(2011)

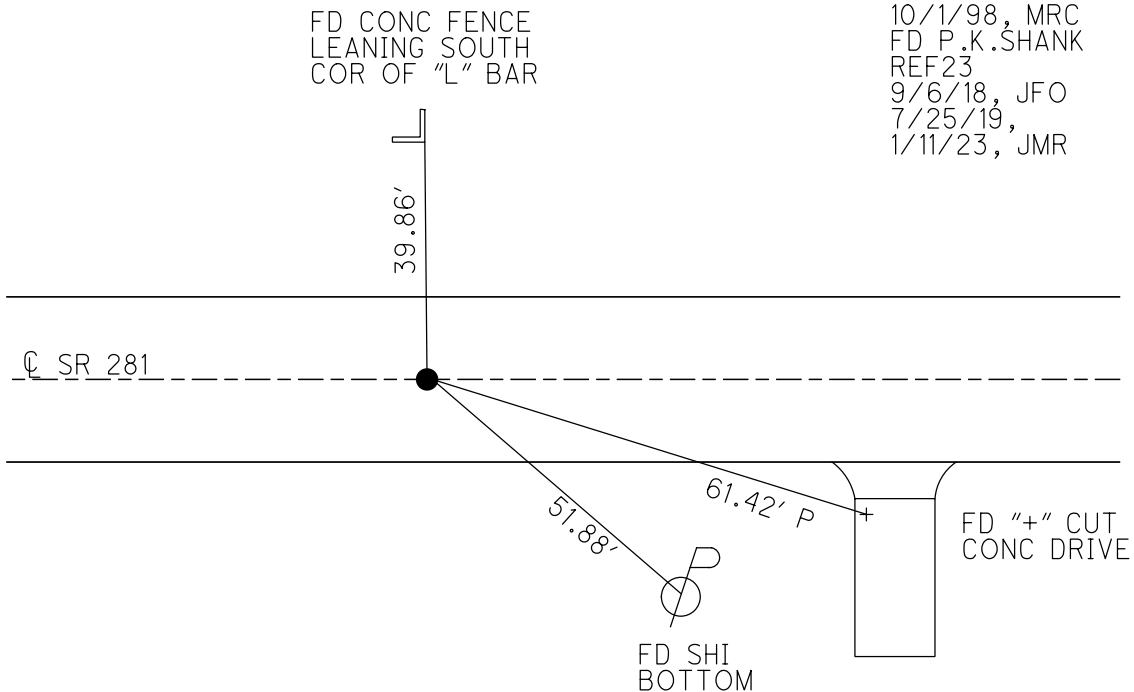
GEOID: 2012A

GRID: NORTHING: 592604.447

EASTING: 1552718.822



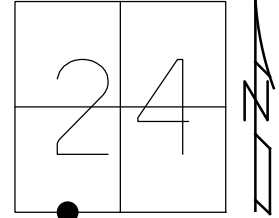
RECORD:
 1/4-1/4 COR SEC 24
 FD SM.R.R.SPIKE
 8/18/98, MC
 SET SM.R.R.SPIKE
 9/2/87, CL
 FD SM.R.R.SPIKE
 8/18/98, MC
 SET P.K./WASHER
 10/1/98, MRC
 FD P.K.SHANK
 REF23
 9/6/18, JFO
 7/25/19,
 1/11/23, JMR



O.D.O.T. DISTRICT 2 SURVEY OFFICE (USE ONLY)

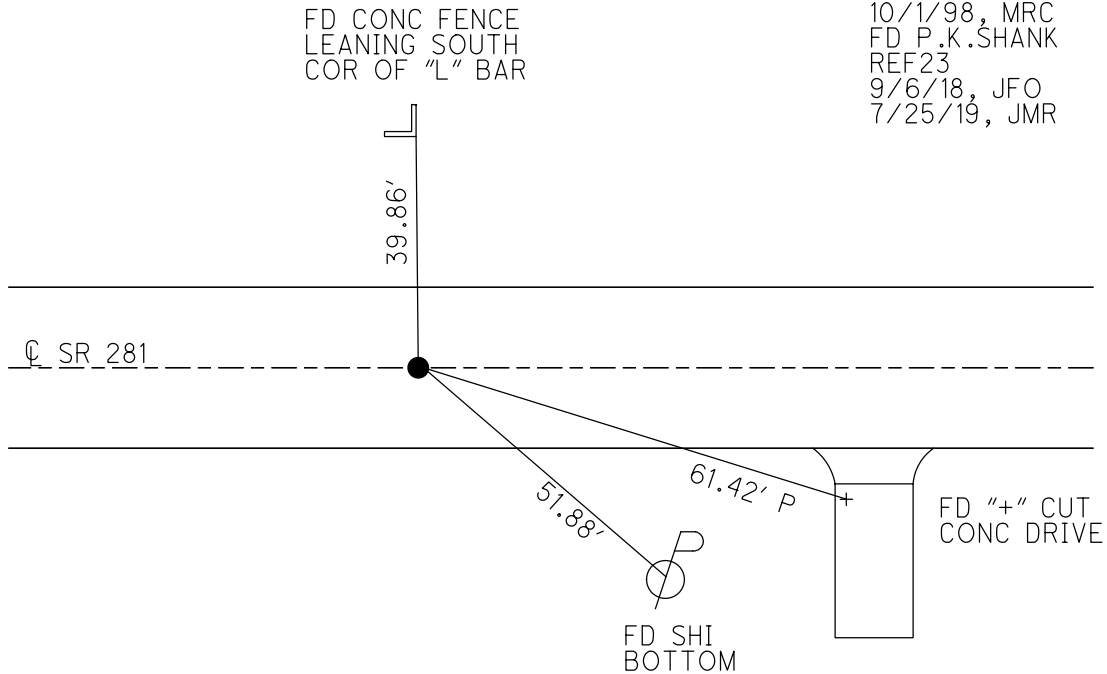
PERSONNEL _____ REFERENCE NO. 23 SHEET 19 OF 34
 NOTES RHOADES DATE 9/6/18 ROUTE SR 281
 H.C. O'DONNELL WEATHER FAIR COUNTY HENRY
 R.C. RHOADES TEMP. 76° TOWNSHIP MONROE
 _____ SECTION 24
 DWG BY NIESE PID CHIP_2 T 4 N R 7 E

TYPE MONUMENT P.K. SHANK
 ON SURFACE - ~~BELOW~~ ON
 OFFSET CL PAVEMENT ON LT : RT
10.4' TO RT EDGE PAVEMENT
 STATION: 589+31



HORIZ.DATUM: NAD83(2011) GEOID: 2012A
 GRID: NORTHING: 592604.447 EASTING: 1552718.822

RECORD:
 1/4-1/4 COR SEC 24
 FD SM.R.R.SPIKE
 8/18/98, MC
 SET SM.R.R.SPIKE
 9/2/87, CL
 FD SM.R.R.SPIKE
 8/18/98, MC
 SET P.K./WASHER
 10/1/98, MRC
 FD P.K.SHANK
 REF23
 9/6/18, JFO
 7/25/19, JMR



O.D.O.T. DISTRICT 2 SURVEY OFFICE

PERSONNEL

REFERENCE NO. 23

SHEET 20 OF 34

NOTES Canterbury

H.C. Rousos

R.C. Nupper

DATE 8-18-98

WEATHER FAIR

TEMP. +84° F

ROUTE SR 281

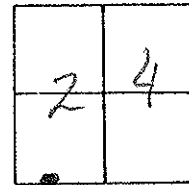
COUNTY Henry

TOWNSHIP Monroe

SECTION 24

T4 N R7 E

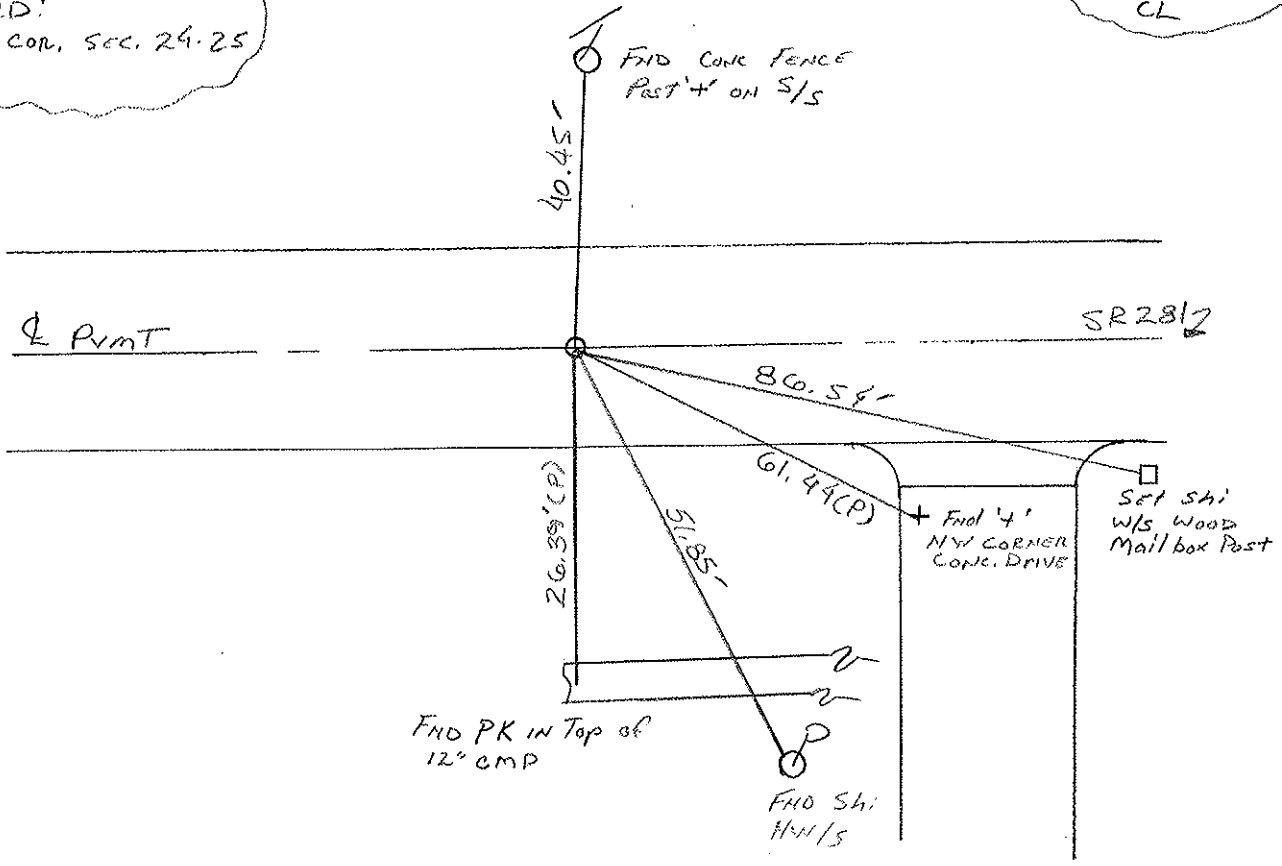
TYPE MONUMENT Sm RR spk
 ON SURFACE - ~~BELOW~~ ON SURFACE
 LEFT- CL PAV'T. - RIGHT ON CL
10.4 TO RT EDGE PAVEMENT
 S.L.M. 17+961.40 s/k (Sta. 589431/2m)



Reset PK & Washer
10-1-98
MAR

Sm RR spk
Set 9-2-87
CL

RECORD:
V4-V9 con. sec. 24-25



DRAWN BY MR

O.D.O.T. DISTRICT 2 SURVEY OFFICE

PERSONNEL _____

REFERENCE NO. 23

SHEET 20 OF _____

NOTES Sackman

H.C. BAARNHISEL

R.C. LOEHRKE

DATE 8-13-87

WEATHER HAZY

TEMP. + 73

ROUTE SR 281

COUNTY HENRY

TOWNSHIP MONROE

SECTION 24

T4 N R 7 E

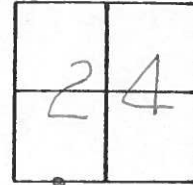
TYPE MONUMENT SMALL R.R. SPIKE

ON SURFACE - BELOW YES

LEFT-CL PAV'T. - RIGHT YES

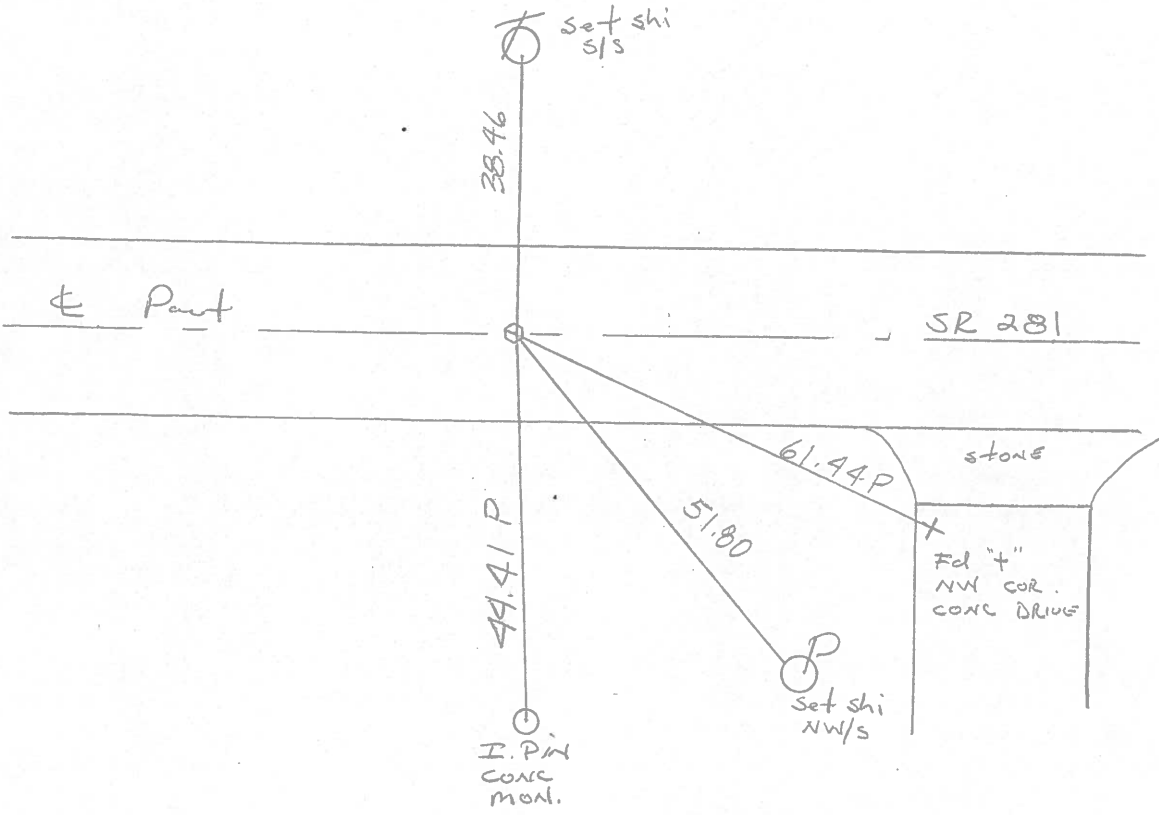
9.9 TO RT EDGE PAVEMENT

S.L.M. 589+31



Record:
 1/4 - 1/4 cor sec 24 - 25

Set Sm. R.R. Spike
 9-2-87
 CL

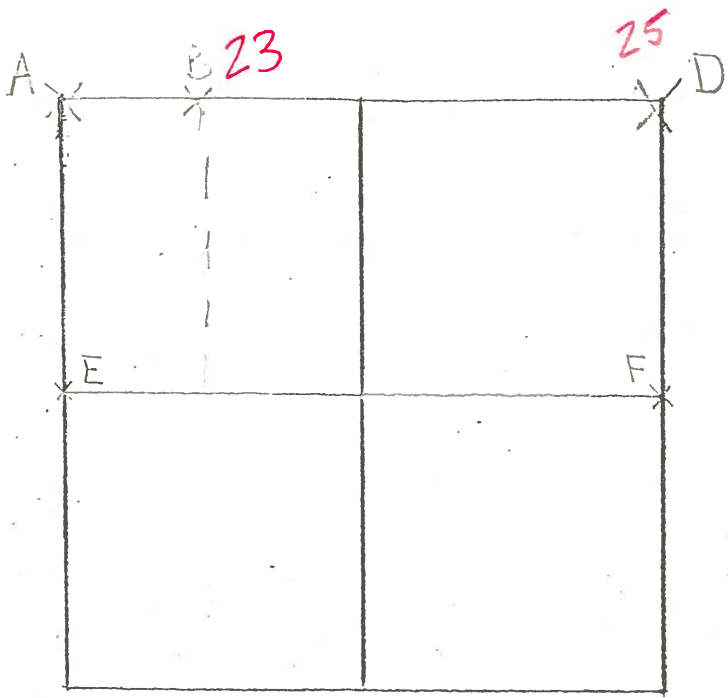


COUNTY HENRY S.R. 281

T 4 SHEET 2 OF 3 N . R 7 E

TOWNSHIP MONROE

SECTION 25



6-6-79 R.W. J.J.G.M.

B- FOUND R.R. SPIKE ON C
 S.R. 281. SEARCHED FOR STONE
 BUT COULD NOT LOCATE. RESET
 R.R. SPIKE ON C S.R. 281

38.50' N. TO "N E S S/S B T
 61.47' E.S.E. TO " + " CONCRETE SPIKE
 51.79' S.E. TO N E S N/S D

6-6-79 R.W. G.M. J.J.

D- FOUND IRON PIN OVER STONE (10" X 10" X 9") 11" BELOW
 SHOULDER SURFACE. REMOVED IRON PIN AND SET 3/4"
 DIAMETER ALONG W/S OF STONE AND BENT TOP OF IRON
 PIN DIRECTLY OVER TOP CENTER OF STONE. IRON PIN
 6" BELOW SHOULDER SURFACE. P.K.'S SET 6' N.E. &
 S.E.

37.39' N.W. TO N.E.S. E/S P

33.16' E.S.E. TO N.E.S. W/S I

27.80' S.S.W. TO " + " ON BASE CONCRETE BRIDGE WALL

56.16' S. TO RICHFIELD STONE

County Henry S.R. 281

Date 5-18-1979

Township Monroe

Weather Clear

Section S $\frac{1}{4}$ Cor. of SW $\frac{1}{4}$ Sec. 24

Temp. 78°

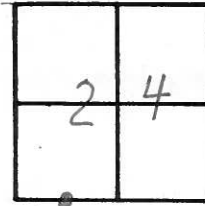
T4N, R7E

Personnel Smith

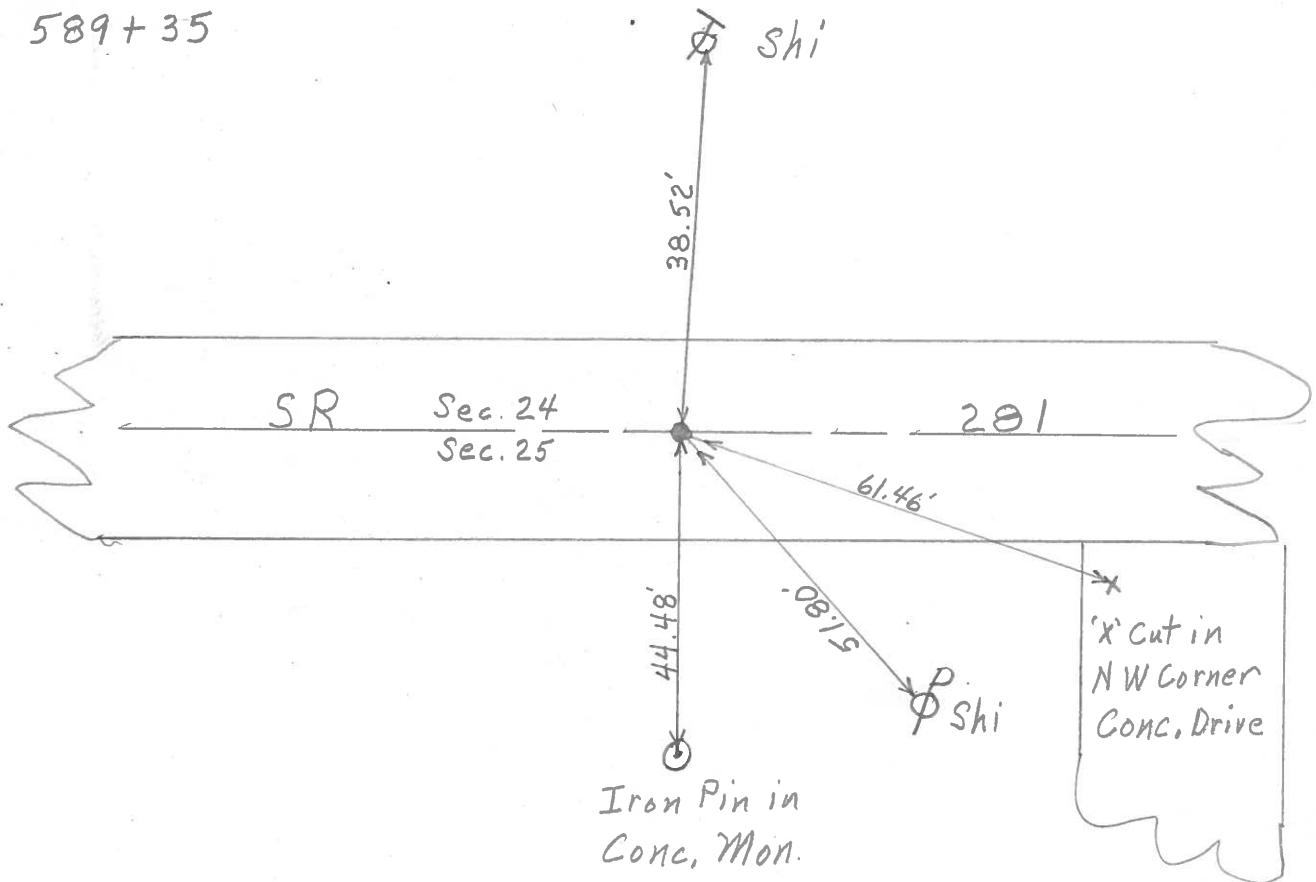
Knape

Bowers

Mead



23
 Fd. R.R. Spike
 2" Below Surface &
 on E of Part
 589+35

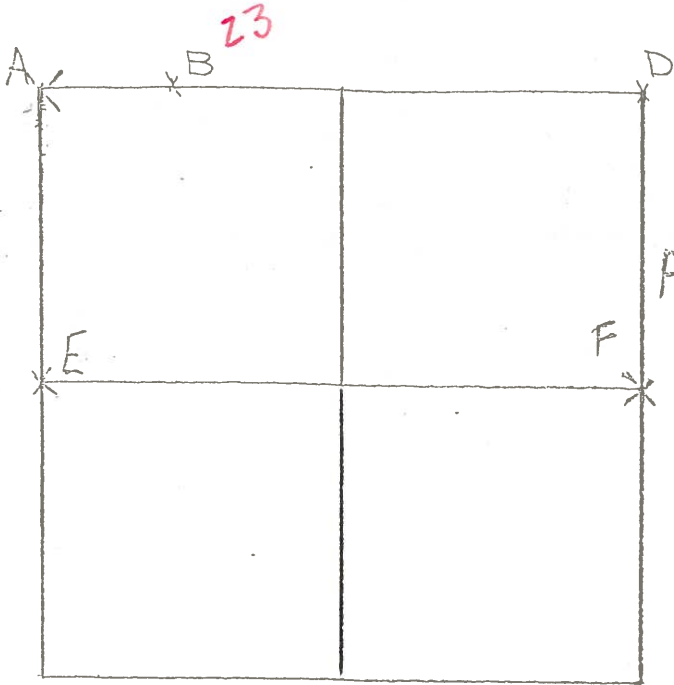


COUNTY HENRY S.R. 281



T 4 N 7 E

TOWNSHIP MONROE



SECTION 25



6-26-79 R.W. G.M.
 F- FOUND STONE (8" x 10" x 12")
 18" BELOW ROAD SURFACE. FOUND
 BROKEN CLAY TILE OVER STONE
 PLACED CENTER PUNCHED R.R.
 SPIKE ON SURFACE OVER
 HIGH POINT OF STONE. P.K.'s
 SET 6' N.E. & S.E.

STONE LOCATED 0.33' EAST OF WEST EDGE OF 18'
 PAVEMENT
 55.86' E.S.E. TO DUPLEX W/S 
 74.18' S.S.E. TO "†" N.W. COR. CATCH BASIN (PLUMBED)
 69.46' S.S.W. TO "†" END 8" DIA. CONC. PIPE (PLUMBED)
 134.88' N.N.E. TO DUPLEX W/S 
 43.12' S. TO W 1/4 POST RICHFIELD TWP.

6-5-79 R.W. J.J. G.M.
 A- FOUND SQUARE SPIKE (8" LONG) ON S.R. 281. FOUND
 STONE (8" x 10" x 14") 18" BELOW ROAD SURFACE. SPIKE LOCATED
 1.93' N. AND 0.20' E. OF STONE. FOUND SMALL STONE OVER
 TRUE STONE. REMOVED SMALL STONE AND PLACED CENTER
 PUNCHED R.R. SPIKE ON SURFACE OVER HIGH POINT OF STONE
 P.K.'s SET 6' S. AND E.

	R.R. SPIKE	SQUARE SPIKE (8" Lg)
44.04' - N.W. TO DUPLEX	E/S 	42.49'
52.72' - S.S.E. TO DUPLEX	W/S 	54.24'
45.45' - S.S.W. TO DUPLEX	E/S 