

O.D.O.T. DISTRICT 2 SURVEY OFFICE (USE ONLY)

PERSONNEL

REFERENCE NO. 25

SHEET 20 OF 34

NOTES RHOADES

DATE 9/6/18

ROUTE SR 281

H.C. O'DONNELL

WEATHER CLOUDY

COUNTY HENRY

R.C. RHOADES

TEMP. 76°

TOWNSHIP RICHFIELD

DWG BY NIESE

PID PAVETRAIN

SECTION 19

T 4 N R 8 E

TYPE MONUMENT SM.R.R.SPIKE

~~ON SURFACE~~ - BELOW 3"

OFFSET  $\odot$  PAVEMENT 3.9' ~~ET~~ : RT

- TO - EDGE PAVEMENT 11.7' W  $\odot$  CR 7 S

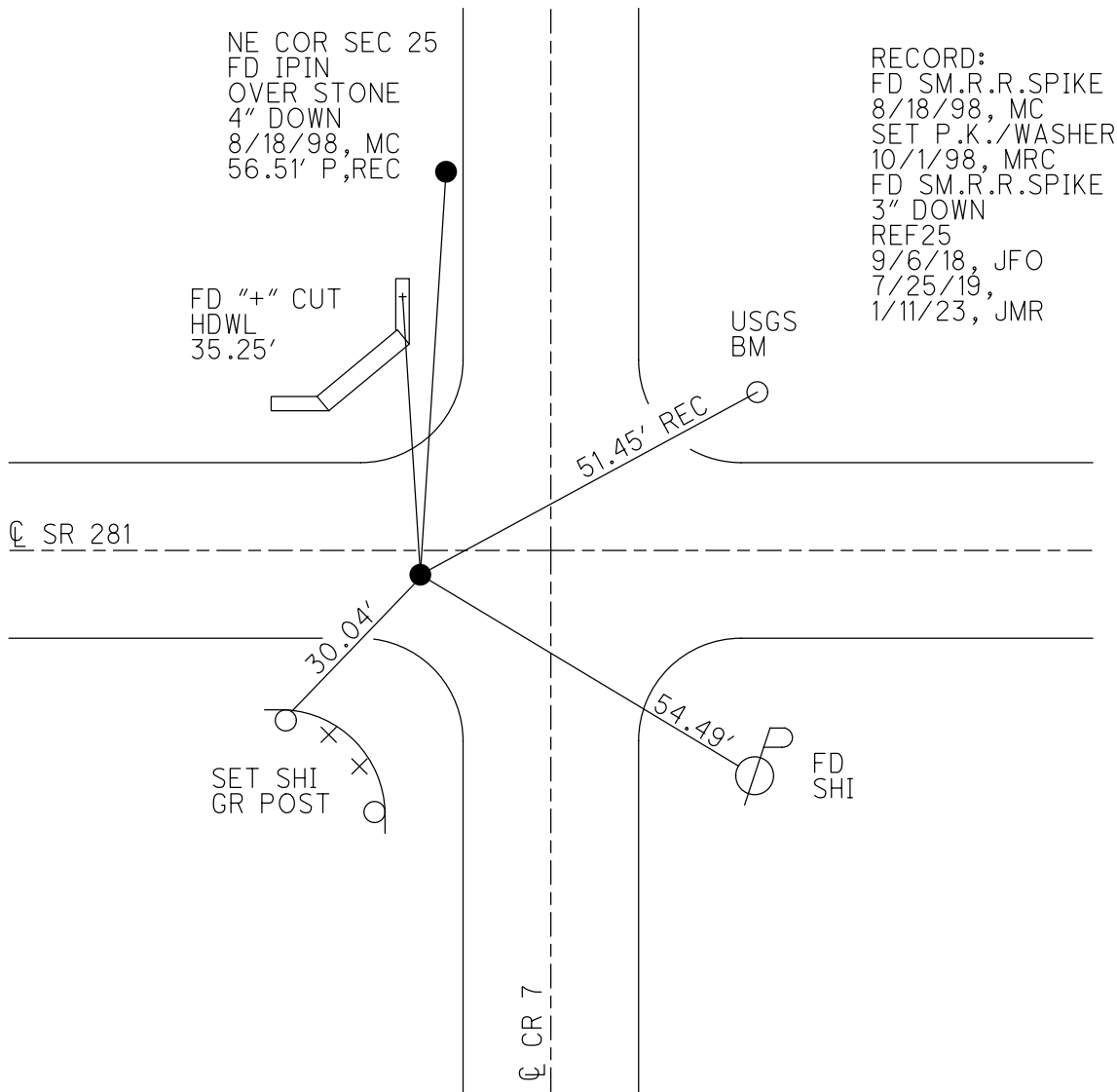
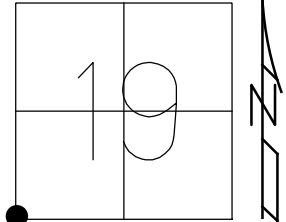
STATION: 628+82

HORIZ.DATUM: NAD83(2011)

GEOID: 2012A

GRID: NORTHING: 592526.089

EASTING: 1556668.797

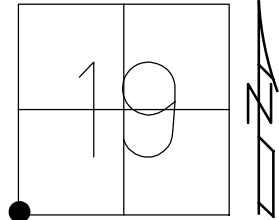


RECORD:  
 FD SM.R.R.SPIKE  
 8/18/98, MC  
 SET P.K./WASHER  
 10/1/98, MRC  
 FD SM.R.R.SPIKE  
 3" DOWN  
 REF25  
 9/6/18, JFO  
 7/25/19,  
 1/11/23, JMR

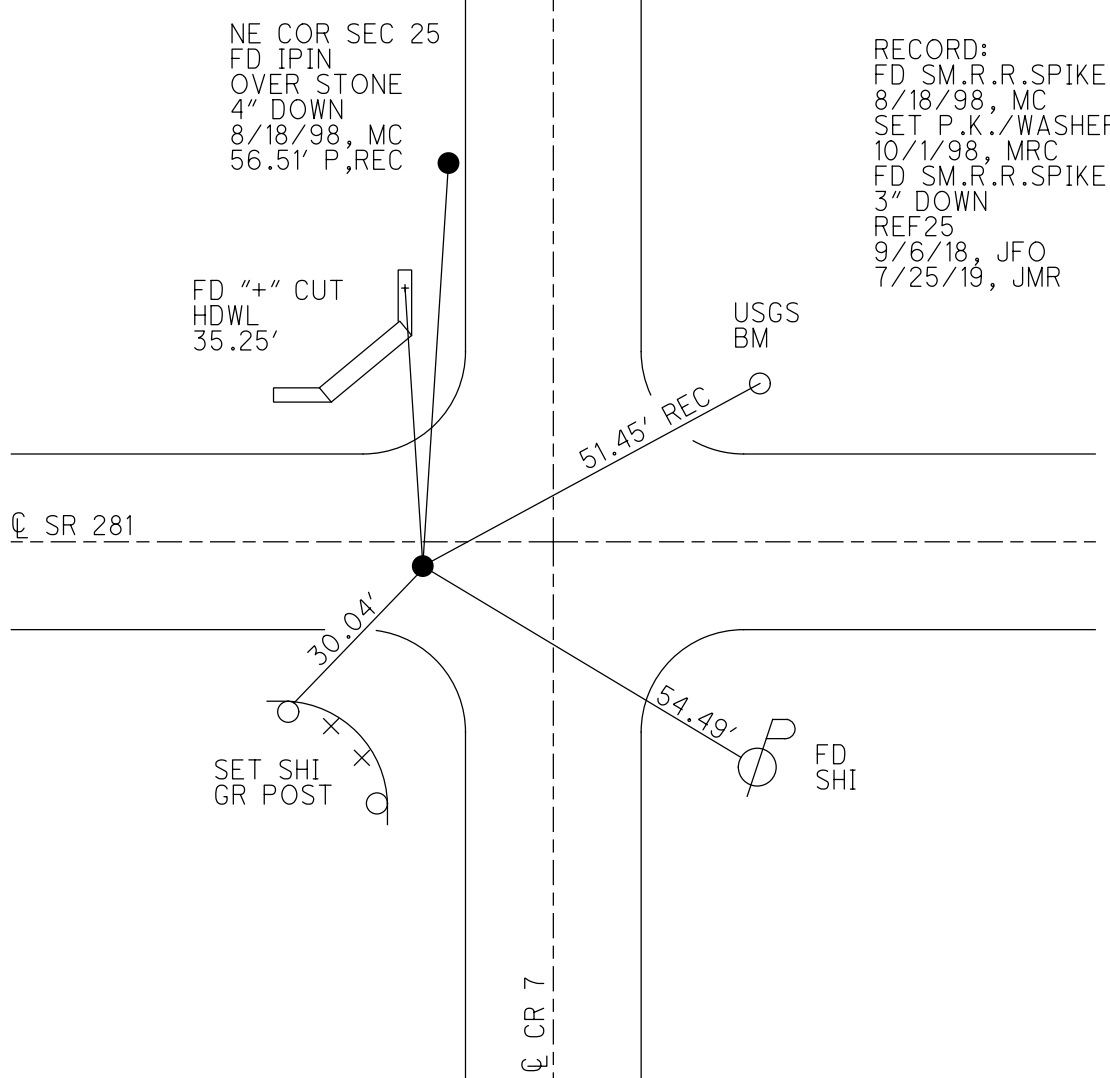
O.D.O.T. DISTRICT 2 SURVEY OFFICE (USE ONLY)

PERSONNEL \_\_\_\_\_ REFERENCE NO. 25 SHEET 20 OF 34  
 NOTES RHOADES DATE 9/6/18 ROUTE SR 281  
 H.C. O'DONNELL WEATHER CLOUDY COUNTY HENRY  
 R.C. RHOADES TEMP. 76° TOWNSHIP RICHFIELD  
 DWG BY NIESE PID CHIP\_2 SECTION 19  
 T 4 N R 8 E

TYPE MONUMENT SM.R.R.SPIKE  
~~ON SURFACE~~ - BELOW 3"  
 OFFSET  $\odot$  PAVEMENT 3.9' ~~LT~~ : RT  
 - TO - EDGE PAVEMENT 11.7' W  $\odot$  CR 7 S  
 STATION: 628+82



HORIZ.DATUM: NAD83(2011) GEOID: 2012A  
 GRID: NORTHING: 592526.089 EASTING: 1556668.797



RECORD:  
 FD SM.R.R.SPIKE  
 8/18/98, MC  
 SET P.K./WASHER  
 10/1/98, MRC  
 FD SM.R.R.SPIKE  
 3" DOWN  
 REF25  
 9/6/18, JFO  
 7/25/19, JMR

# O.D.O.T. DISTRICT 2 SURVEY OFFICE

PERSONNEL \_\_\_\_\_

REFERENCE NO. 25

SHEET 21 OF 34

NOTES Canterbury

H.C. Rousos

R.C. Nuffer

DATE 8-18-98

WEATHER Fair

TEMP. +84°F

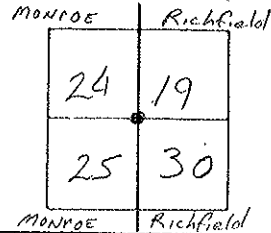
ROUTE SR 281

COUNTY HENRY

TOWNSHIP Monroe/Richfield

SECTION \_\_\_\_\_

T4 N R 7 E



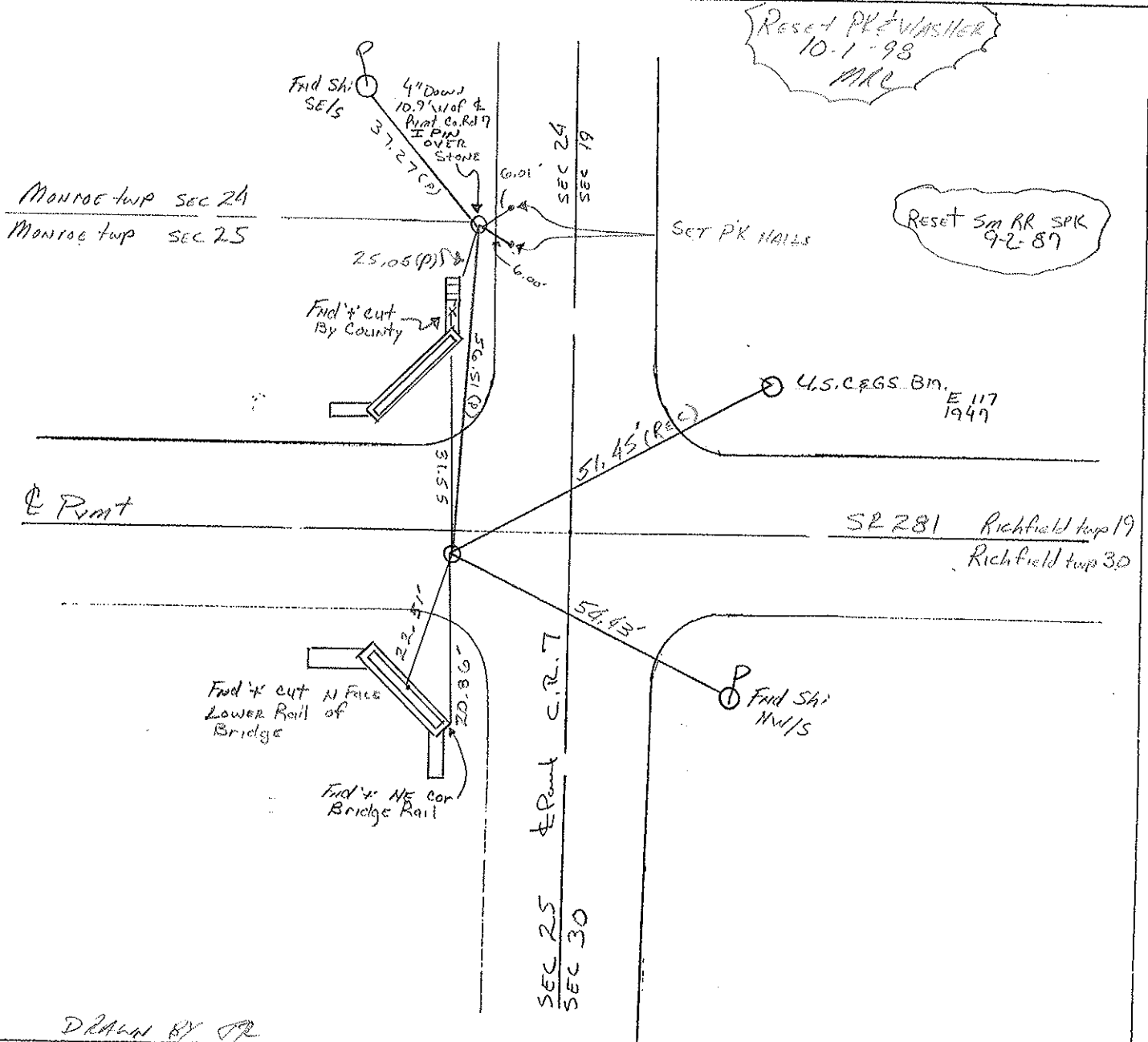
TYPE MONUMENT Small RR spk

ON SURFACE - BELOW SURFACE

LEFT- & PAV'T. - RIGHT 3.9 RT

TO EDGE PAVEMENT 11.7' w/ of & Pmnt. Co. Rd. 7 south

S.L.M. 19+164.25 g.l.m (sta. 628+82.36m)



# O.D.O.T. DISTRICT 2 SURVEY OFFICE

PERSONNEL

REFERENCE NO. 25

SHEET 21 OF     

NOTES SOCK MAN

H.C. BARNHISEL

R.C. LOEHRKE

DATE 8-13-87

WEATHER HAZY

TEMP. +73

ROUTE SR 281

COUNTY HENRY

TOWNSHIP MONROE

SECTION RICHFIELD

T4 NR 7 E

RESET Sm. RR Spikes  
9-2-87

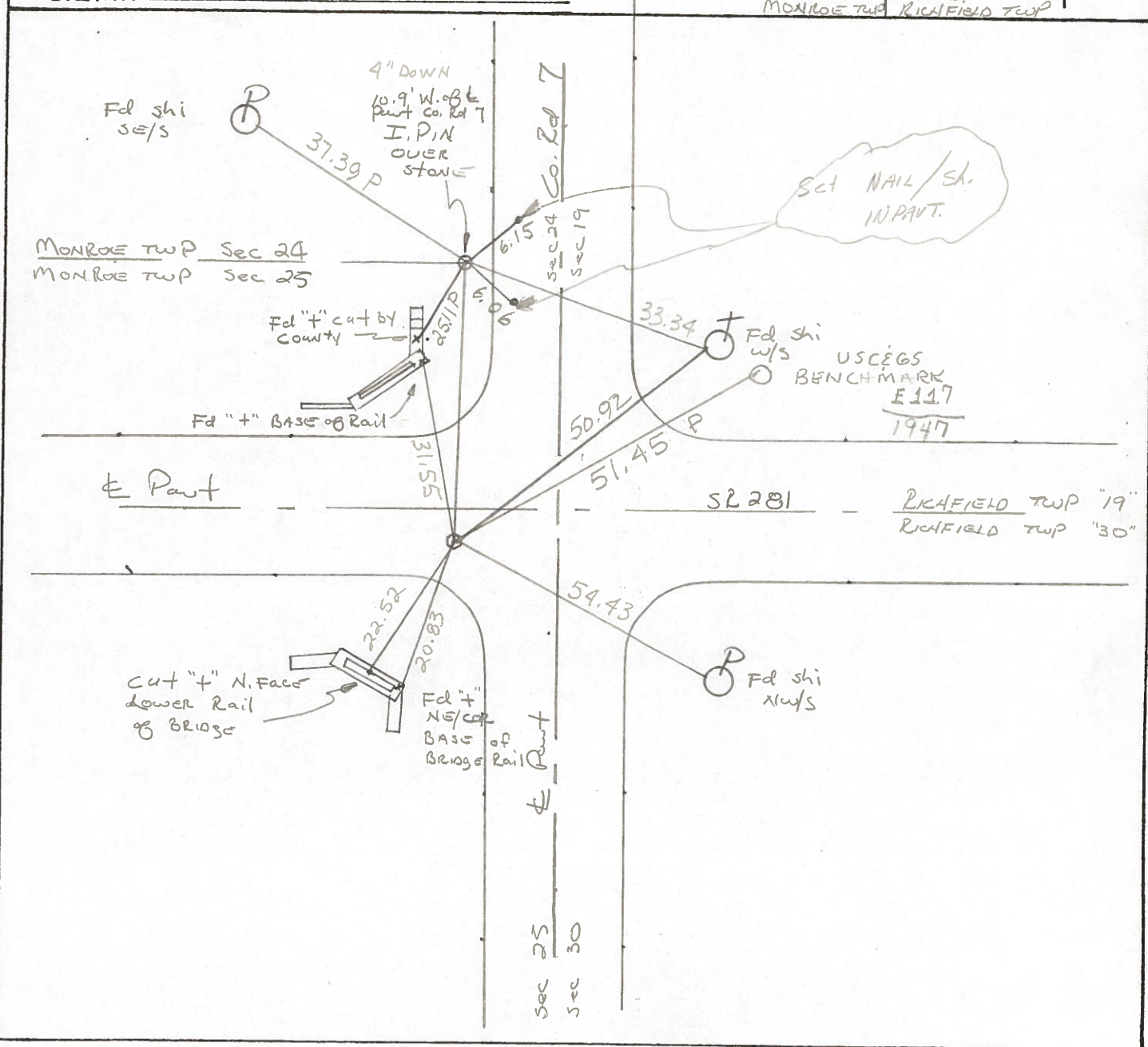
TYPE MONUMENT SMALL RR SPIKE / I. PIN OVER STONE

ON SURFACE - BELOW YES

LEFT- & PAV'T. - RIGHT 4.0'

TO EDGE PAVEMENT 11.7' West of & Paint Co. Rd "7" South

S.L.M. 628+82

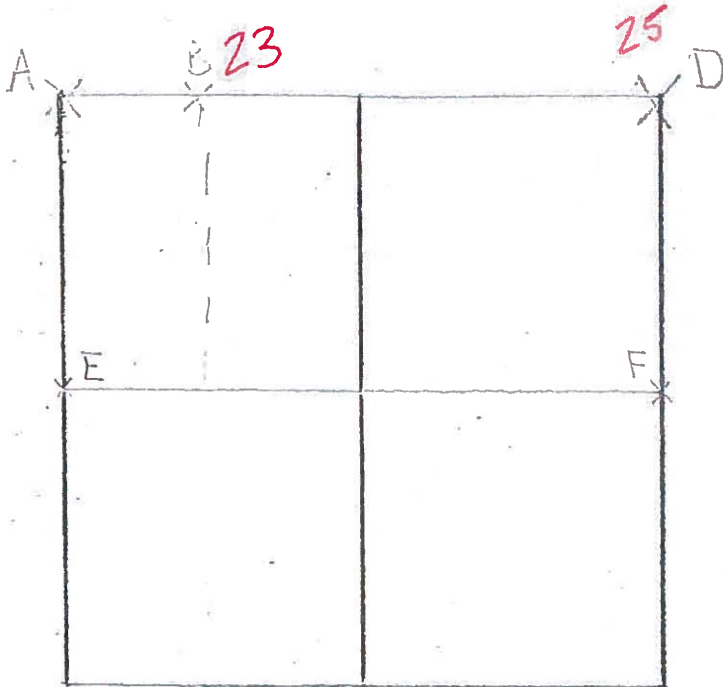


COUNTY HENRY J.R. 281

1 4 N . R / E

TOWNSHIP MONROE

SECTION 25



6-6-79 R.W. J.J.G.M.

B- FOUND R.R. SPIKE ON C  
 S.R. 281. SEARCHED FOR STONE  
 BUT COULD NOT LOCATE. RESET  
 R.R. SPIKE ON C S.R. 281

38.50' N. TO "N.E.S. S/S B T  
 61.47' E.S.E. TO "+" CONCRETE BRIDGE  
 51.79' S.E. TO N.E.S. N/S D

6-6-79 R.W. G.M. J.J.

D- FOUND IRON PIN OVER STONE (10" x 10" x 9") 11" BELOW  
 SHOULDER SURFACE. REMOVED IRON PIN AND SET 3/4"  
 DIAMETER ALONG W/S OF STONE AND BENT TOP OF IRON  
 PIN DIRECTLY OVER TOP CENTER OF STONE. IRON PIN  
 6" BELOW SHOULDER SURFACE. P.K.'s SET 6' N.E. &  
 S.E.

37.39' N.W. TO N.E.S. E/S D

33.16' E.S.E. TO N.E.S. W/S I

27.80' S.S.W. TO "+" ON BASE CONCRETE BRIDGE WALL

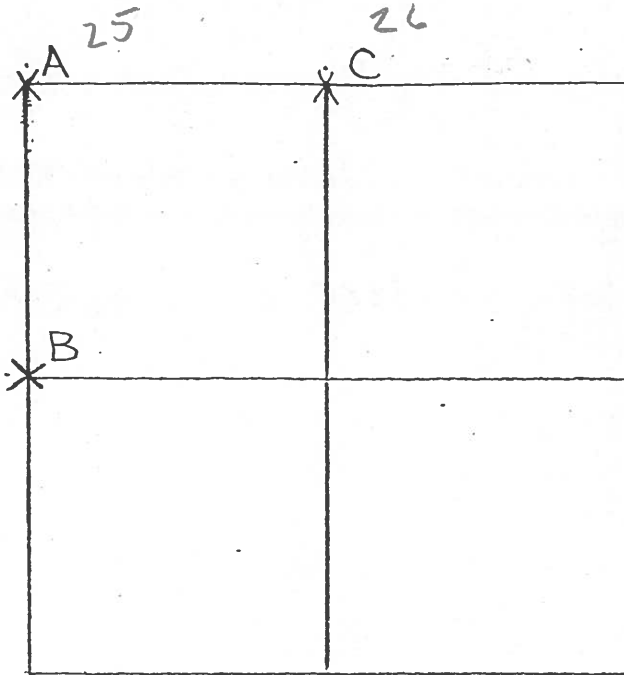
56.16' S. TO RICHFIELD STONE

COUNTY HENRY

SHEET 1 OF 2  
T-4-N, R-8-E

TOWNSHIP RICHFIELD

SECTION 30



6-6-79 RW, J.J., G.M.

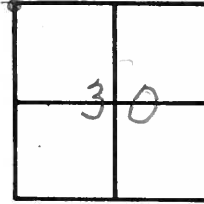
A -- FOUND R.R. SPIKE OVER HIGH POINT OF STONE (7" x 8" x 11") 18" BELOW ROAD SURFACE. PLACED CENTER PUNCHED R.R. SPIKE ON SURFACE OVER HIGH POINT OF STONE. P.K.'s 6' S. & E. 31.55' N.N.W. TO "+" BASE CONC. BRIDGE WALL 50.86' N.N.E. TO SHINER  $\frac{1}{5}$  D 54.40' S.E. TO SHINER  $\frac{1}{5}$  D 20.79' S.W. TO "+" BASE CONC. BRIDGE WALL

6-25-79 RW. G.M.

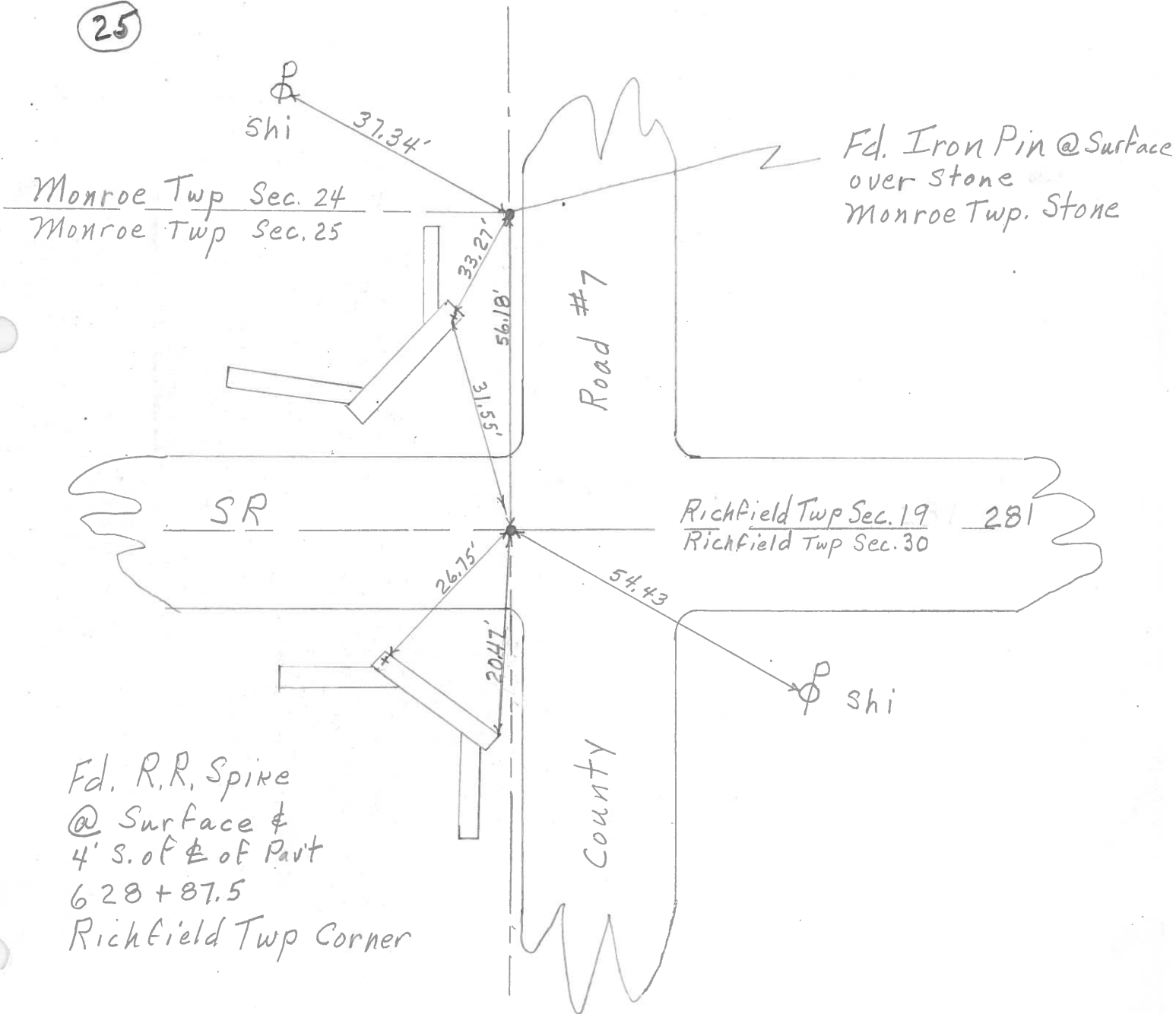
B -- FOUND STONE (15" x 19" x 20") 16" BELOW ROAD SURFACE PLACED CENTER PUNCHED R.R. SPIKE ON SURFACE OVER HIGH POINT OF STONE. P.K.'s SET 6' N.E. & S.E. STONE LOCATED 0.33' EAST OF WEST EDGE OF 18' PAVEMENT 30.61' E.S.E TO DUPLEX  $\frac{1}{5}$  D 37.82' S.E. TO "+" N.W. COR. CATCH BASIN (PLUMBED) 28.51' S.W. TO "+" END 8" DIA CONC. PIPE (PLUMBED) 43.12' NORTH TO EAST  $\frac{1}{4}$  POST SEC. 25; MONROE TWP.

County Henry S.R. 281  
 Township Richfield & Monroe  
 Section NW Cor. Sec. 30 Richfield &  
SE Cor. Sec. 24 Monroe  
 T 4N, R 8E  
 Personnel Smith  
Knappe  
Bowers  
Mead

Date 5-18-1979  
 Weather clear  
 Temp. 78°



(25)





PERSONNEL TITLE PERSONNEL TITLE

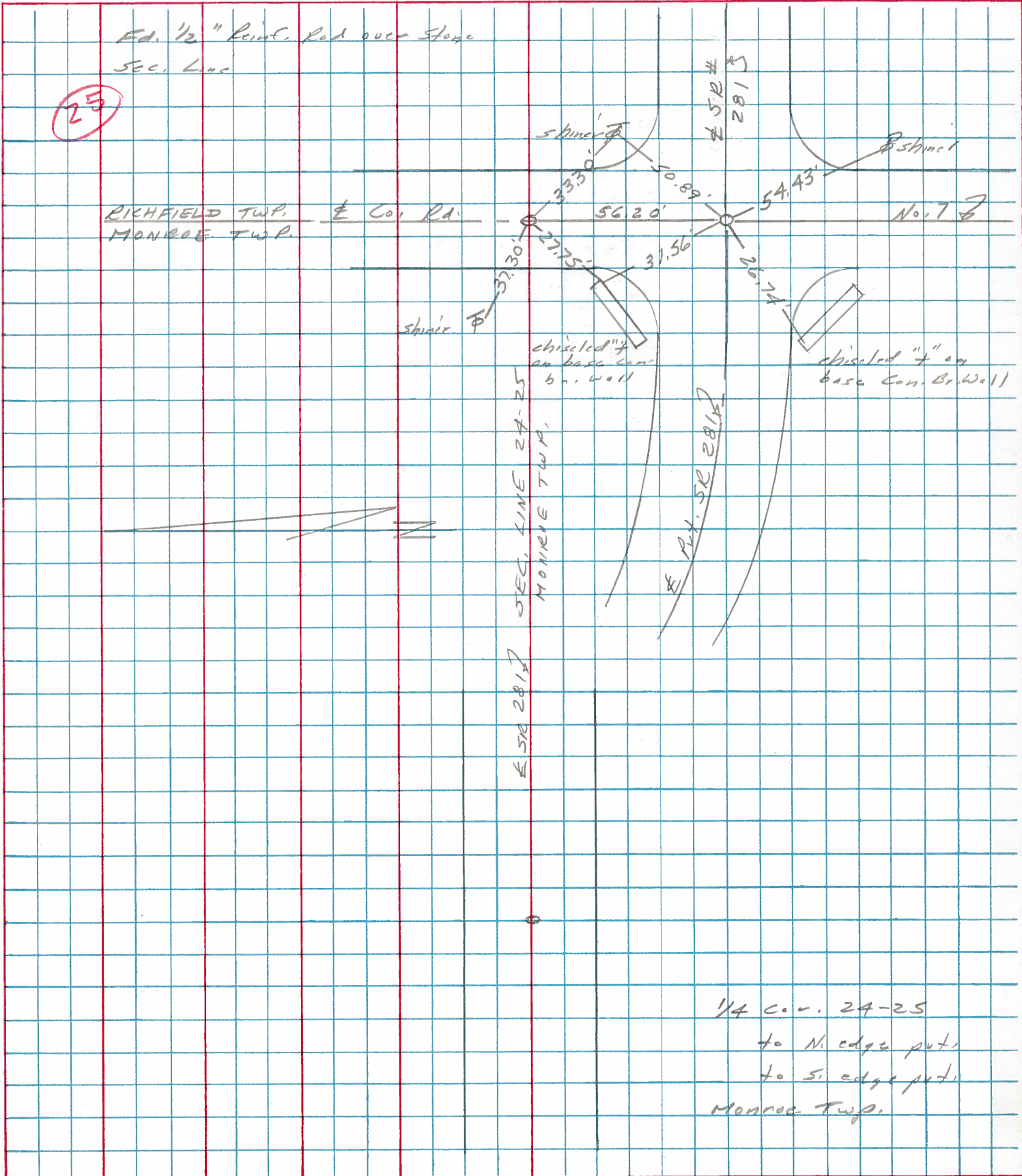
COUNTY Henry DATE 19 April 77

Stops  
#  
Crew

S. R. 281 WEATHER Sunny

SEC. Monroe Twp. TEMP. 78°

DESCRIPTION References to Control Points LEFT CENTER LINE RIGHT JOB NO.





PERSONNEL TITLE PERSONNEL TITLE COUNTY HENRY DATE Nov. 25, 1974  
 Tomsic \_\_\_\_\_  
 Neuser \_\_\_\_\_  
 Granata \_\_\_\_\_  
 S. R. 281 WEATHER \_\_\_\_\_  
 SEC. RICHFIELD TWP. TEMP. \_\_\_\_\_

DESCRIPTION LEFT CENTER LINE RIGHT JOB NO.

