

O.D.O.T. DISTRICT 2 SURVEY OFFICE (USE ONLY)

PERSONNEL

REFERENCE NO. 27

SHEET 22 OF 34

NOTES RHOADES  
 H.C. O'DONNELL  
 R.C. RHOADES

DATE 9/6/18  
 WEATHER CLOUDY  
 TEMP. 76°

ROUTE SR 281  
 COUNTY HENRY  
 TOWNSHIP RICHFIELD  
 SECTION 20  
T 4 N R 8 E

DWG BY NIESE PID PAVETRAIN

TYPE MONUMENT SM.R.R.SPIKE

~~ON SURFACE~~ - BELOW 3"

OFFSET  $\odot$  PAVEMENT 4.8' ~~RT~~ : RT

- TO - EDGE PAVEMENT 9.5' W OF  $\odot$  CR 6 N

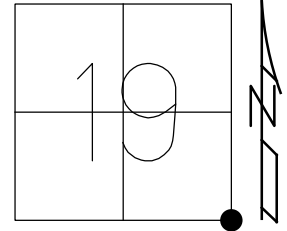
STATION: 681+06

HORZ.DATUM: NAD83(2011)

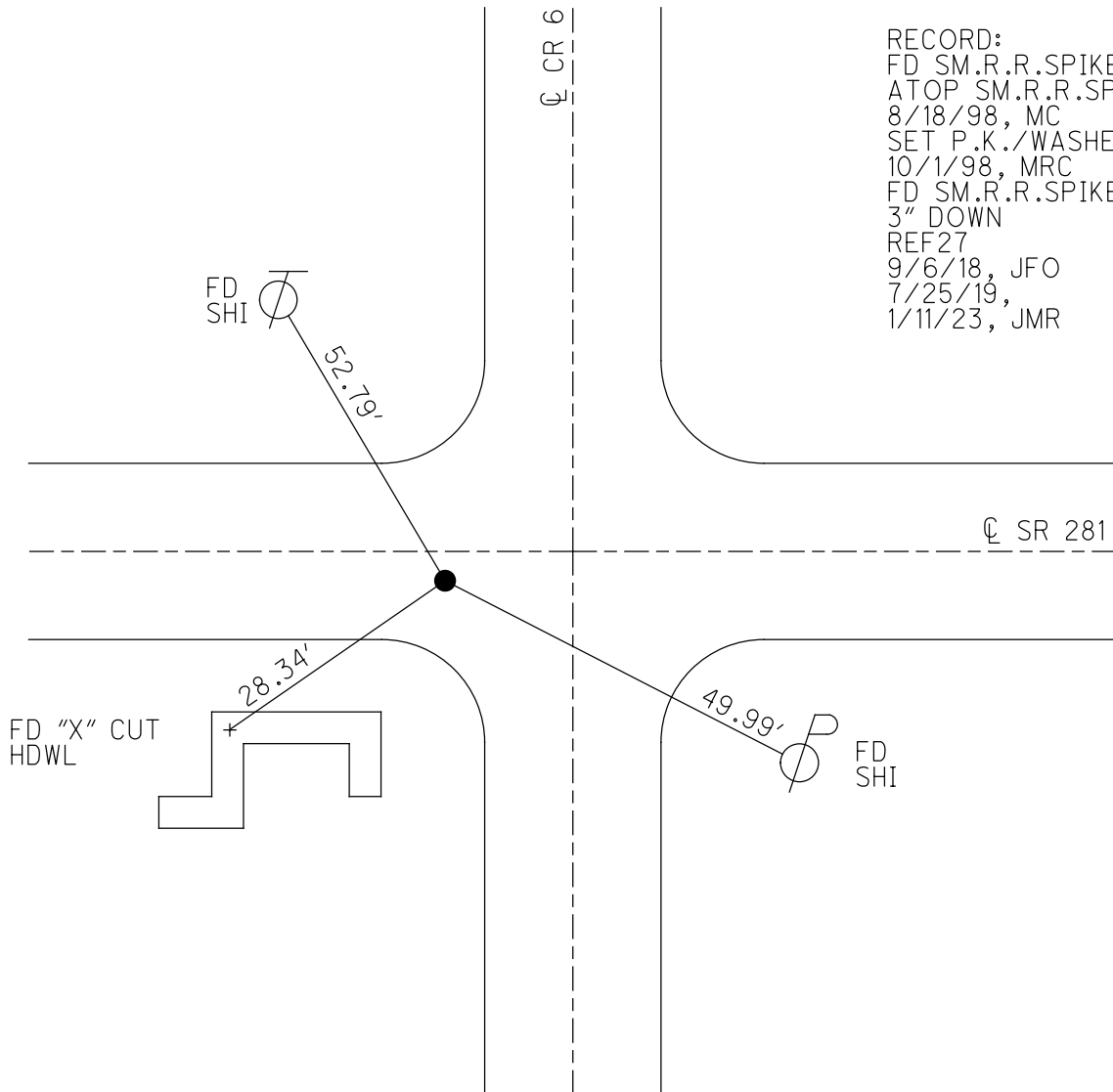
GEOID: 2012A

GRID: NORTHING: 592470.611

EASTING: 1561893.334



RECORD:  
 FD SM.R.R.SPIKE  
 ATOP SM.R.R.SPIKE  
 8/18/98, MC  
 SET P.K./WASHER  
 10/1/98, MRC  
 FD SM.R.R.SPIKE  
 3" DOWN  
 REF27  
 9/6/18, JFO  
 7/25/19,  
 1/11/23, JMR



O.D.O.T. DISTRICT 2 SURVEY OFFICE (USE ONLY)

PERSONNEL

REFERENCE NO. 27

SHEET 22 OF 34

NOTES RHOADES

DATE 9/6/18

ROUTE SR 281

H.C. O'DONNELL

WEATHER CLOUDY

COUNTY HENRY

R.C. RHOADES

TEMP. 76°

TOWNSHIP RICHFIELD

SECTION 20

DWG BY NIESE

PID CHIP\_2

T 4 N R 8 E

TYPE MONUMENT SM.R.R.SPIKE

~~ON SURFACE~~ - BELOW 3"

OFFSET  $\odot$  PAVEMENT 4.8' ~~LT~~ : RT

- TO - EDGE PAVEMENT 9.5' W OF  $\odot$  CR 6 N

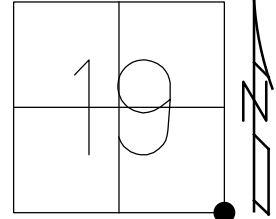
STATION: 681+06

HORIZ.DATUM: NAD83(2011)

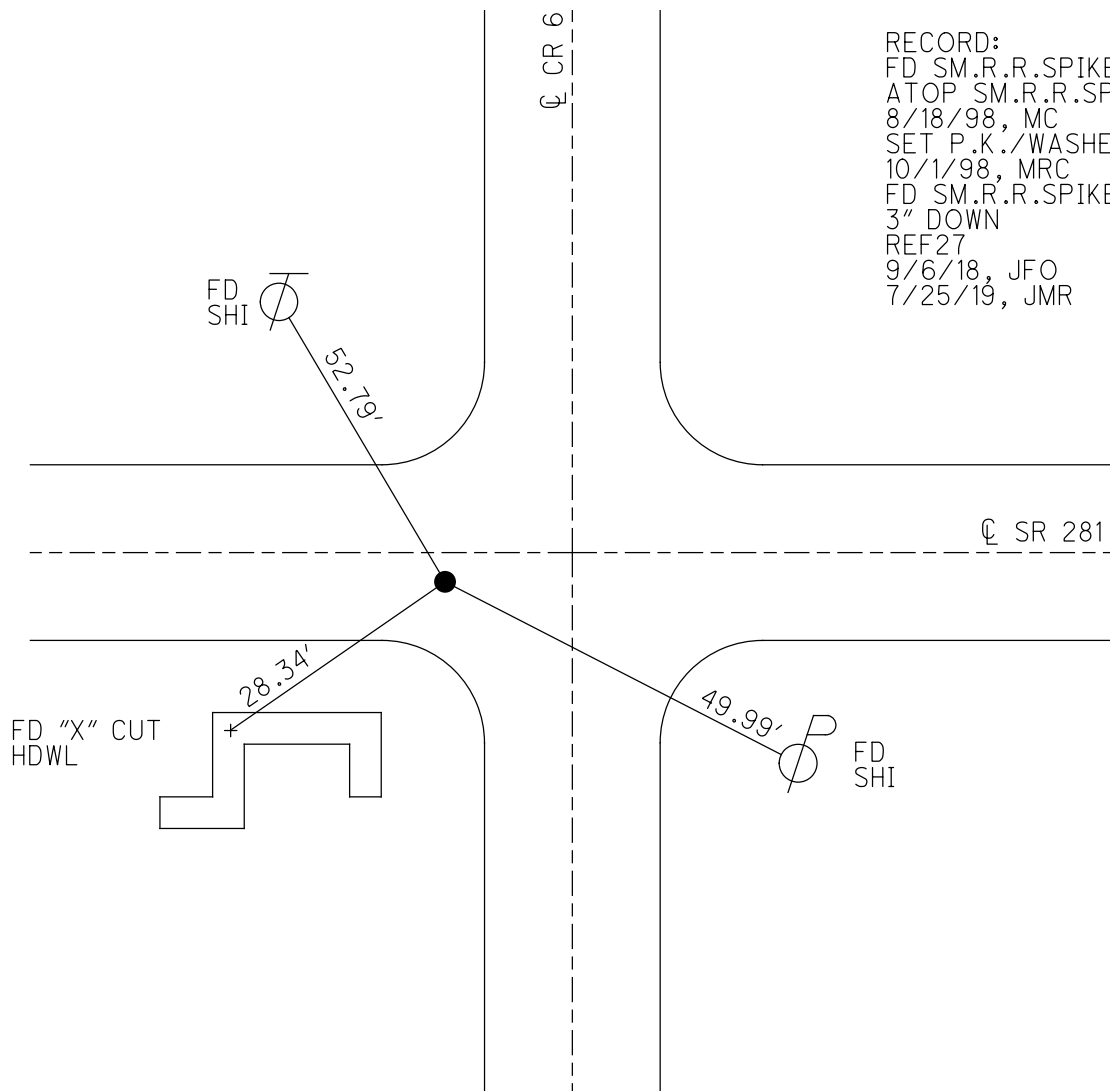
GEOID: 2012A

GRID: NORTHING: 592470.611

EASTING: 1561893.334



RECORD:  
 FD SM.R.R.SPIKE  
 ATOP SM.R.R.SPIKE  
 8/18/98, MC  
 SET P.K./WASHER  
 10/1/98, MRC  
 FD SM.R.R.SPIKE  
 3" DOWN  
 REF27  
 9/6/18, JFO  
 7/25/19, JMR



# O.D.O.T. DISTRICT 2 SURVEY OFFICE

PERSONNEL \_\_\_\_\_

REFERENCE NO. 27

SHEET 23 OF 34

NOTES Conterbury

H.C. Rouss

R.C. Nutter

DATE 8-18-98

WEATHER Fair

TEMP. +84°F

ROUTE SR 281

COUNTY HENRY

TOWNSHIP Richfield

SECTION 20

T4 E R 8 N

TYPE MONUMENTS Sm. RR SPK ATOP Sm RR SPK

ON SURFACE - ~~BELOW~~ Surface

LEFT - ☉ PAV'T. - RIGHT 4.8' RT

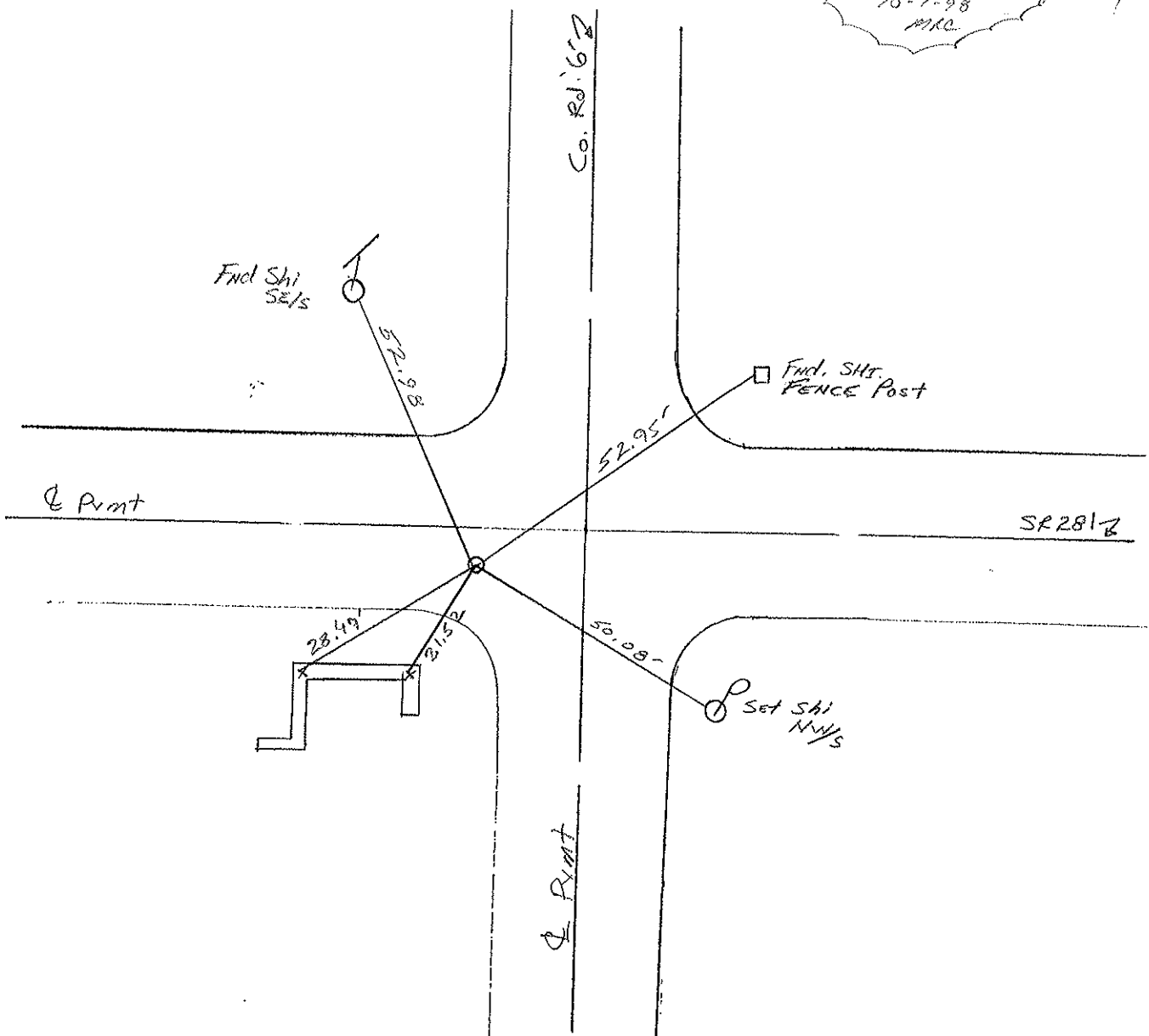
TO EDGE PAVEMENT 9.5' w of ☉ Pmnt Co. Rd Co North

S.L. ~~At~~ 20 + 757.75 SLK , Co B1+06

19	20
30	29



RESET PLAINWASHER  
 10-1-98  
 MRC



DRAWING 72

# O.D.O.T. DISTRICT 2 SURVEY OFFICE

PERSONNEL \_\_\_\_\_

REFERENCE NO. 27

SHEET 23 OF \_\_\_\_\_

NOTES SACKMAN

H.C. BARNHISE

R.C. LOEHKE

DATE 8-13-87

WEATHER HAZY

TEMP. +75

ROUTE SR 281

COUNTY HENRY

TOWNSHIP RICHFIELD

SECTION 20

T4 N R 8 E

TYPE MONUMENT SMALL RR SPIKE

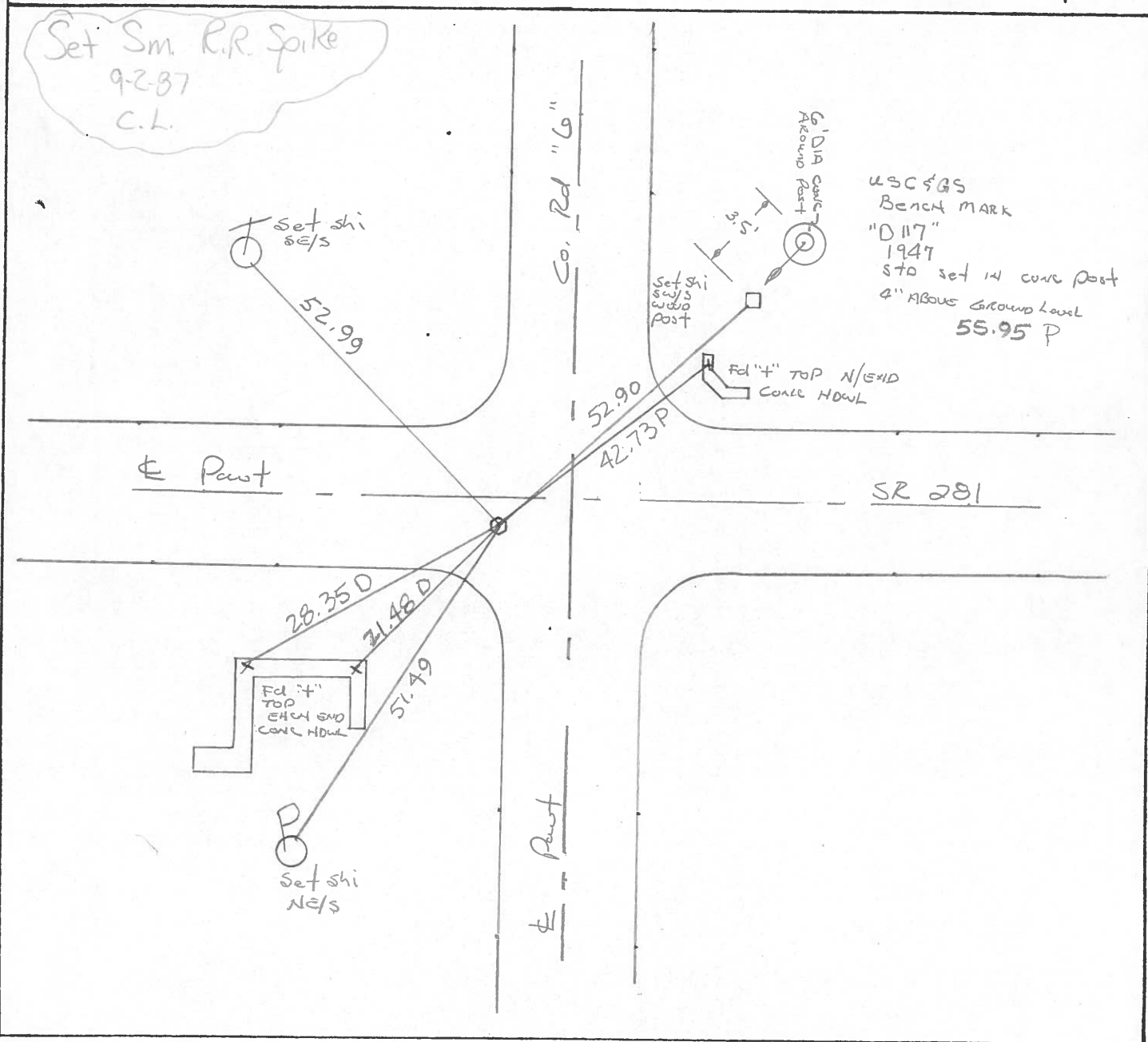
ON SURFACE - ~~BELOW~~ YES

~~LEFT -~~ PAV'T. - RIGHT 4.7

TO EDGE PAVEMENT 9.7' west of E Pavt  
Co. Rd "6" X 0.74

S.L.M. 681+06

19	20
30	29

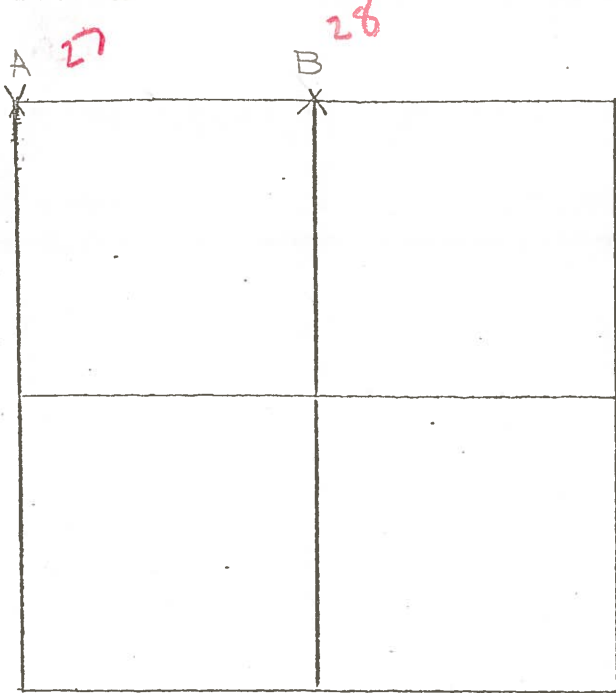


COUNTY HENRY S.R. 281

T 4 N , R 8 E

TOWNSHIP RICHFIELD

SECTION 29



6-8-79 R.W, J.J, G.M.

A-- FOUND RAILROAD SPIKE OVER HIGH  
 POINT OF STONE (14" x 15" x 15") 17" BELOW  
 ROAD SURFACE. POINT FALLS IN GROOVE  
 IN TOP OF STONE. FOUND PIECES OF  
 BROKEN VITRIFIED PIPE OVER STONE.  
 PLACED CENTER PUNCHED R.R. SPIKE  
 ON SURFACE OVER HIGH POINT OF  
 STONE. P.K.'S 6' N. & E.

52.50' N.W. TO SHINER IN  $\text{SE}/\text{S}$   $\perp$

52.89' N.E. TO SHINER IN  $\text{SW}/\text{S}$  COR. FENCE POST

21.46' S.W. TO "+" EAST END CONC. HEADWALL

28.32' W.S.W. TO "+" WEST END CONC. HEADWALL

6-8-79 R.W, J.J, G.M.

B-- FOUND PR NAIL 0.10' NORTH AND 0.50' EAST OF STONE (5" x 7" x 24")

12" BELOW ROAD SURFACE. STONE IS LEANING TO THE SOUTH. REMOVED PR  
 AND PLACED CENTER PUNCHED R.R. SPIKE ON SURFACE OVER HIGH  
 POINT OF STONE. P.K.'S 6' S. & W.

STONE IS 8.0' NORTH OF SOUTH EDGE OF 18' PAVEMENT

87.09' N.N.W. TO SHINER  $\text{SE}/\text{S}$   $\perp$

39.57' N.E. TO "+" WEST END CONC. HEADWALL

85.42' E.N.E. TO SHINER  $\text{SW}/\text{S}$   $\perp$

48.28' E.S.E. TO "+" EAST END CONC. HEADWALL

51.55' S.S.E. TO SHINER  $\text{N}/\text{S}$   $\perp$

47.22' S.S.W. TO CENTER U.S.G.S. BENCH MARK

County Henry S.R. 281

Date 5-22-1979

Township Richfield

Weather Clear

Section NE Corner Sec. 30

Temp. 65°

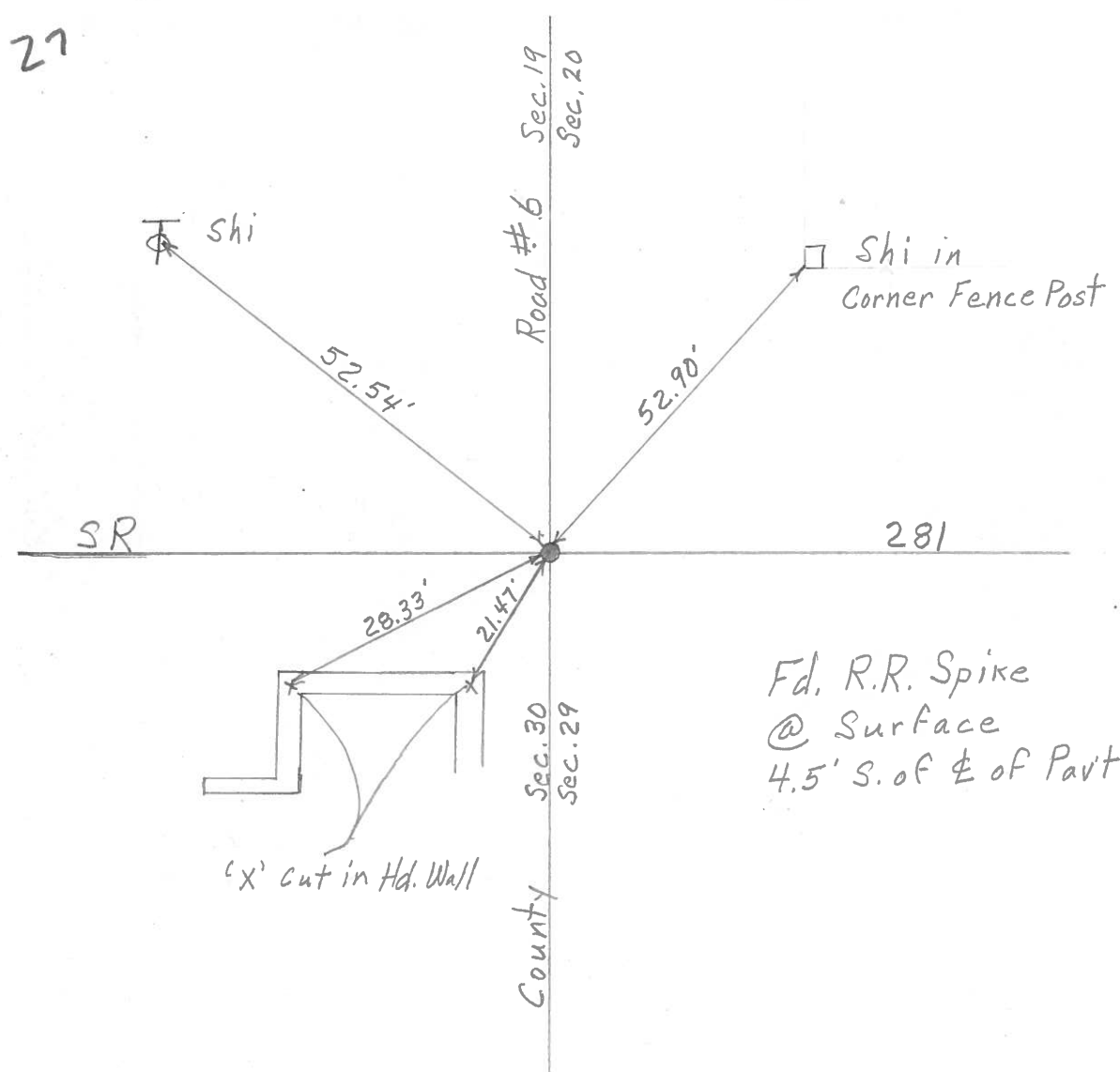
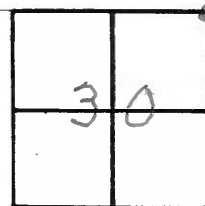
T4N, R8E

Personnel Burnside

Smith

Knape

Mead



PERSONNEL TITLE PERSONNEL TITLE

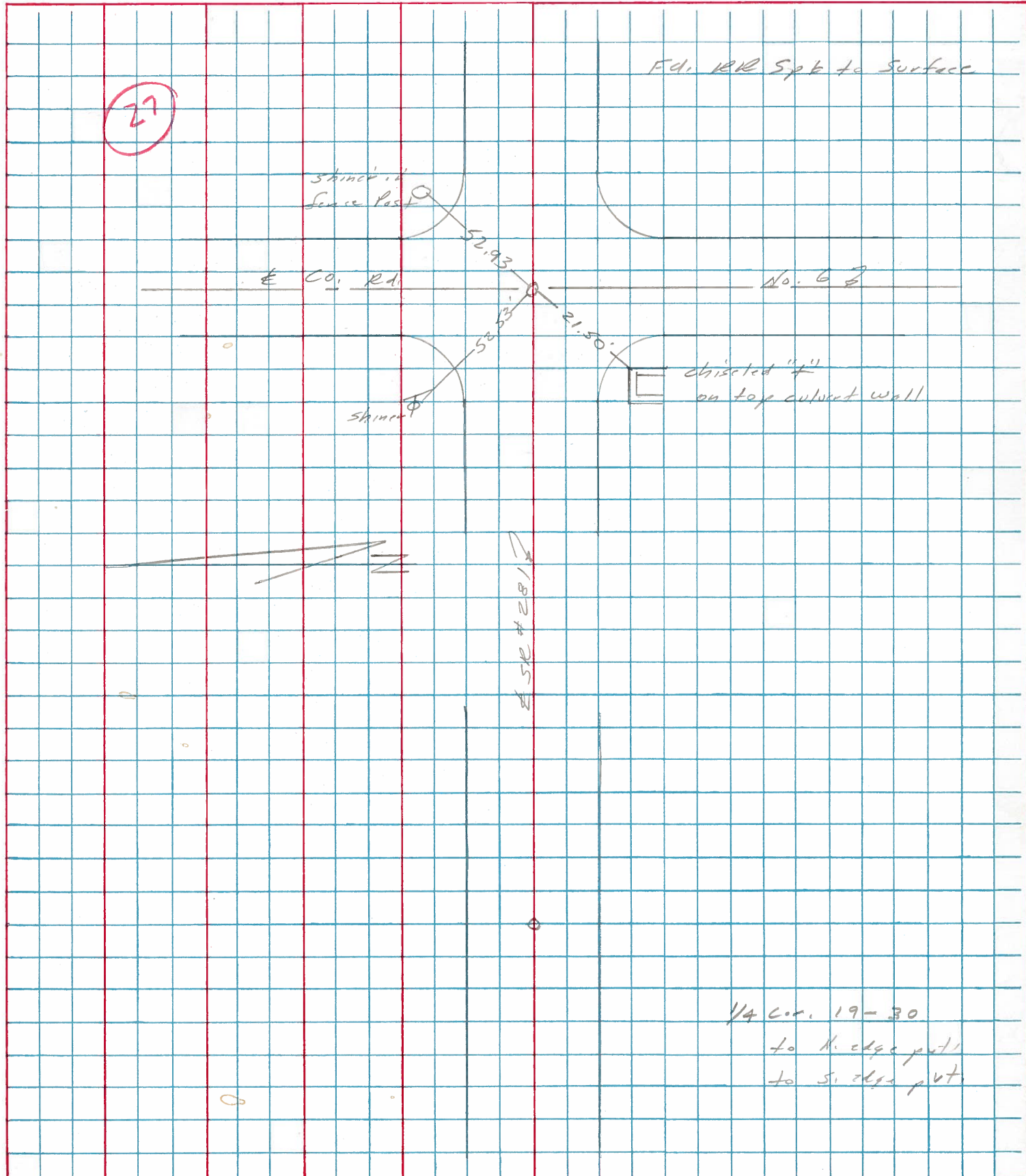
Stone  
E  
Crew

COUNTY Henry DATE 19 April 77

S. R. 281 WEATHER Warm

SEC. RICHFIELD TWP TEMP. 80°

DESCRIPTION References to Control Points LEFT CENTER LINE RIGHT JOB NO.

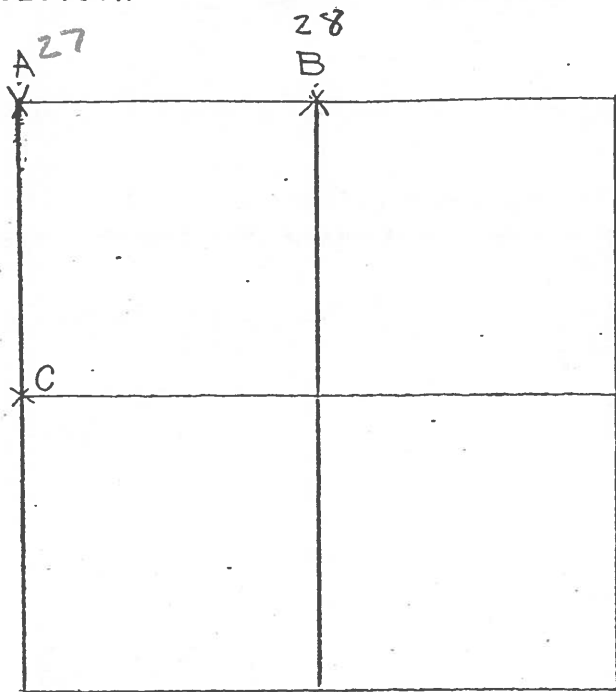


COUNTY HENRY

SHEET 1 of 2  
T 4 N, R 8 E

TOWNSHIP RICHFIELD

SECTION 29



6-8-79 R.W, J.J, G.M.

A-- FOUND RAILROAD SPIKE OVER HIGH  
POINT OF STONE (14" x 15" x 15") 17" BELOW  
ROAD SURFACE. POINT FALLS IN GROOVE  
IN TOP OF STONE. FOUND PIECES OF  
BROKEN VITRIFIED PIPE OVER STONE.  
PLACED CENTER PUNCHED R.R. SPIKE  
ON SURFACE OVER HIGH POINT OF  
STONE. P.K.'s 6' N. & E.

52.50' N.W. TO SHINER IN  $\frac{SE}{S}$   $\perp$

52.89' N.E. TO SHINER IN  $\frac{SW}{S}$  COR. FENCE POST

21.46' S.W. TO "+" EAST END CONC. HEADWALL

28.32' W.S.W. TO "+" WEST END CONC. HEADWALL

6-8-79 R.W, J.J, G.M.

B-- FOUND PK NAIL 0.10' NORTH AND 0.50' EAST OF STONE (5" x 7" x 24")  
12" BELOW ROAD SURFACE. STONE IS LEANING TO THE SOUTH. REMOVED PK  
AND PLACED CENTER PUNCHED R.R. SPIKE ON SURFACE OVER HIGH  
POINT OF STONE. P.K.'s 6' S. & W.

STONE IS 8.0' NORTH OF SOUTH EDGE OF 18' PAYEMENT

87.09' N.N.W. TO SHINER  $\frac{SE}{S}$   $\perp$

39.57' N.E. TO "+" WEST END CONC. HEADWALL

85.42' E.N.E. TO SHINER  $\frac{SW}{S}$   $\perp$

48.28' E.S.E. TO "+" EAST END CONC. HEADWALL

51.55' S.S.E. TO SHINER  $\frac{N}{S}$   $\perp$

47.22' S.S.W. TO CENTER U.S.G.S. BENCH MARK



PERSONNEL TITLE PERSONNEL TITLE COUNTY HENRY DATE Nov. 25, 1974  
 Tamsic \_\_\_\_\_  
 Neuser \_\_\_\_\_ S. R. 281 WEATHER \_\_\_\_\_  
 Granata \_\_\_\_\_ SEC. RICHFIELD TWP. TEMP. \_\_\_\_\_

DESCRIPTION LEFT CENTER LINE RIGHT JOB NO.

