

O.D.O.T. DISTRICT 2 SURVEY OFFICE (USE ONLY)

PERSONNEL _____ REFERENCE NO. 28 SHEET 23 OF 34
 NOTES RHOADES DATE 9/6/18 ROUTE SR 281
 H.C. O'DONNELL WEATHER CLOUDY COUNTY HENRY
 R.C. RHOADES TEMP. 76° TOWNSHIP RICHFIELD
 DWG BY NIESE PID PAVETRAIN SECTION 20
 T 4 N R 8 E

TYPE MONUMENT P.K./WASHER

ON SURFACE - ~~BELOW~~ ON

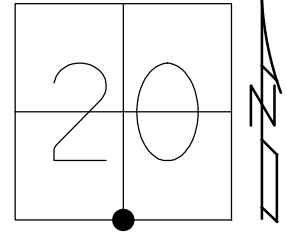
OFFSET \odot PAVEMENT 1.7' ~~±~~ : RT

8.7' TO RT EDGE PAVEMENT

STATION: 707+25

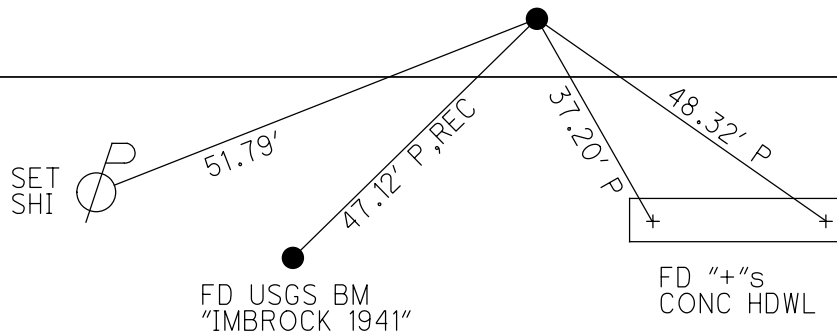
HORZ.DATUM: NAD83(2011) GEOID: 2012A

GRID: NORTHING: 592460.657 EASTING: 1564562.113



RECORD:
 FD SM.R.R.SPIKE
 ATOP P.K.NAIL
 6/2/98, MC
 SET P.K./WASHER
 10/5/98, MRC
 FD P.K./WASHER
 REF20
 9/6/18, JFO
 7/25/19,
 1/11/23, JMR

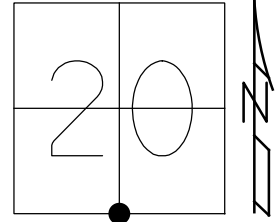
\odot SR 281



O.D.O.T. DISTRICT 2 SURVEY OFFICE (USE ONLY)

PERSONNEL _____ REFERENCE NO. 28 SHEET 23 OF 34
 NOTES RHOADES DATE 9/6/18 ROUTE SR 281
 H.C. O'DONNELL WEATHER CLOUDY COUNTY HENRY
 R.C. RHOADES TEMP. 76° TOWNSHIP RICHFIELD
 SECTION 20
 DWG BY NIESE PID CHIP_2 T 4 N R 8 E

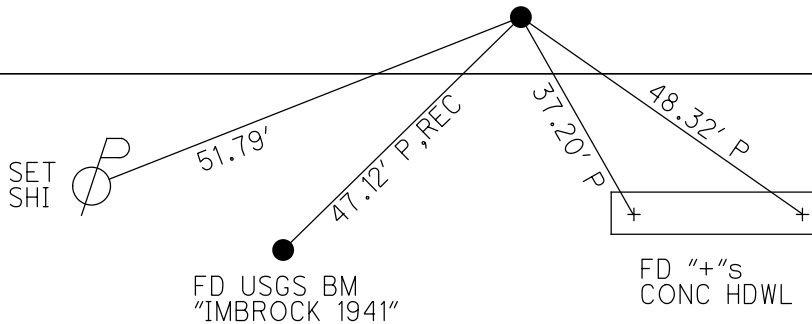
TYPE MONUMENT P.K./WASHER
 ON SURFACE - ~~BELOW~~ ON
 OFFSET \odot PAVEMENT 1.7' ~~LF~~ : RT
8.7' TO RT EDGE PAVEMENT
 STATION: 707+25



HORZ.DATUM: NAD83(2011) GEOID: 2012A
 GRID: NORTHING: 592460.657 EASTING: 1564562.113

RECORD:
 FD SM.R.R.SPIKE
 ATOP P.K.NAIL
 6/2/98, MC
 SET P.K./WASHER
 10/5/98, MRC
 FD P.K./WASHER
 REF20
 9/6/18, JFO
 7/25/19, JMR

\odot SR 281



O.D.O.T. DISTRICT 2 SURVEY OFFICE

PERSONNEL

REFERENCE NO. 28

SHEET 24 OF 34

NOTES Canterbury

H.C. Rousos

R.C. Xupfer

DATE 6-2-98

WEATHER SUNNY

TEMP. +90°F

ROUTE SR 281

COUNTY HENRY

TOWNSHIP Richfield

SECTION 20

T 4 N R 8 E

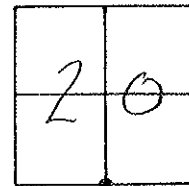
TYPE MONUMENT SMRR Spk ATOP RR NAIL

ON SURFACE - ~~BELOW~~ surface

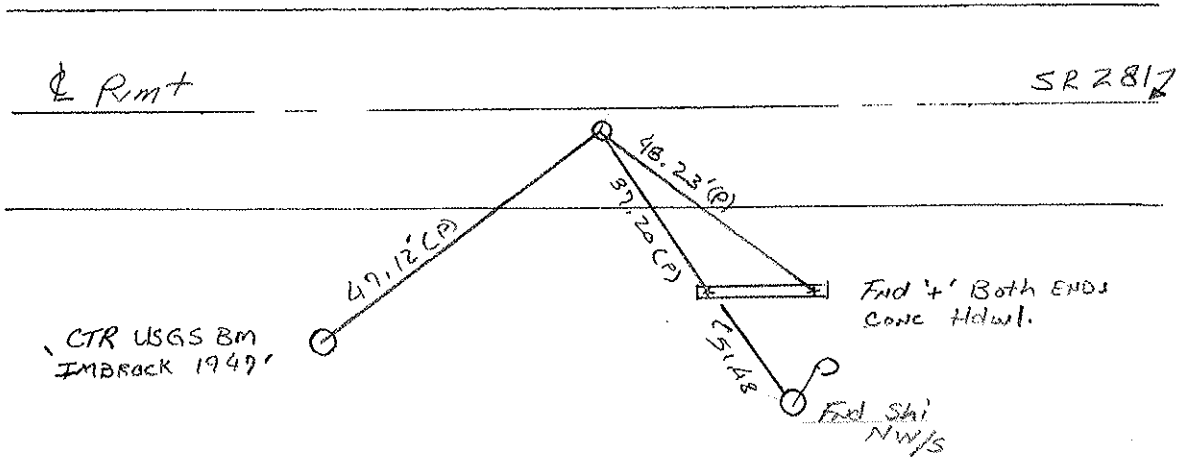
LEFT - CL PAV'T. - RIGHT 1.0' RT

8.7' TO RT EDGE PAVEMENT

S.L.M. 21+570.80 SLK, 707+75 SLM



Reset Pk WASHED
10-5-98
MRC



CTR USGS BM
EMBRACK 1949'

Fid 4' Both ENDS
CONC Hdwt.

Fid Shi
NW 1/4

DRAWN BY TR

O.D.O.T. DISTRICT 2 SURVEY OFFICE

PERSONNEL _____

REFERENCE NO. 28

SHEET 24 OF _____

NOTES SOCKMAN

H.C. BARNHISEL

DATE 8-13-87

ROUTE SR 281

R.G. LOEHRKE

WEATHER HAZY

COUNTY HENRY

TEMP. +75

TOWNSHIP RICHFIELD

SECTION 20

T 4 N R 8 E

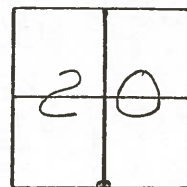
TYPE MONUMENT P.K. Nail *Reset Sm. RR. Spike*

ON SURFACE - BELOW YES

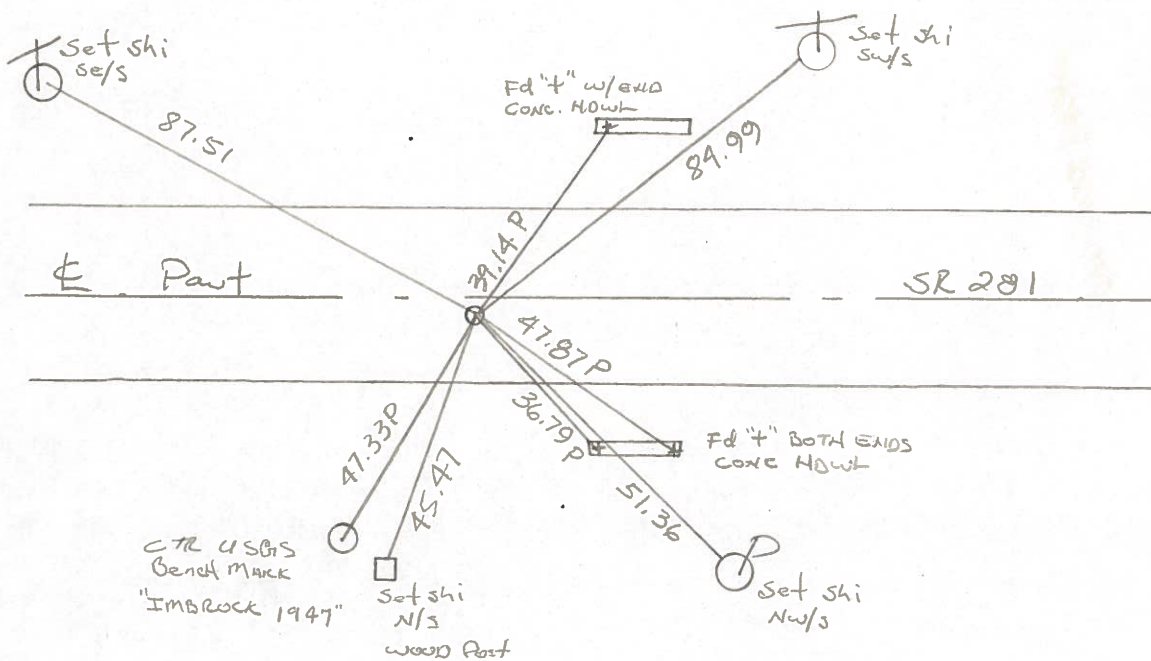
~~LEFT~~ - PAV'T. - RIGHT 1.8'

7.9 TO 2⁺ EDGE PAVEMENT

S.L.M. 707+75



Set Sm. RR. Spike
9-2-87 C.L.



Q.D.O.T. DISTRICT 2 SURVEY OFFICE

Sht. 6 of

County HENRY S.R. 281

Township RICHFIELD

Section N 1/4 Post SEC. 29

T4N, R8E

Personnel BURNSIDE

SMITH

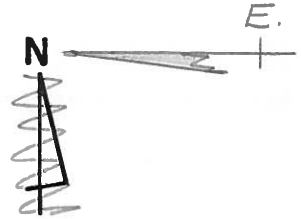
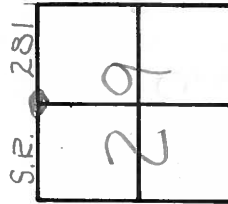
KNAPE

MEAD

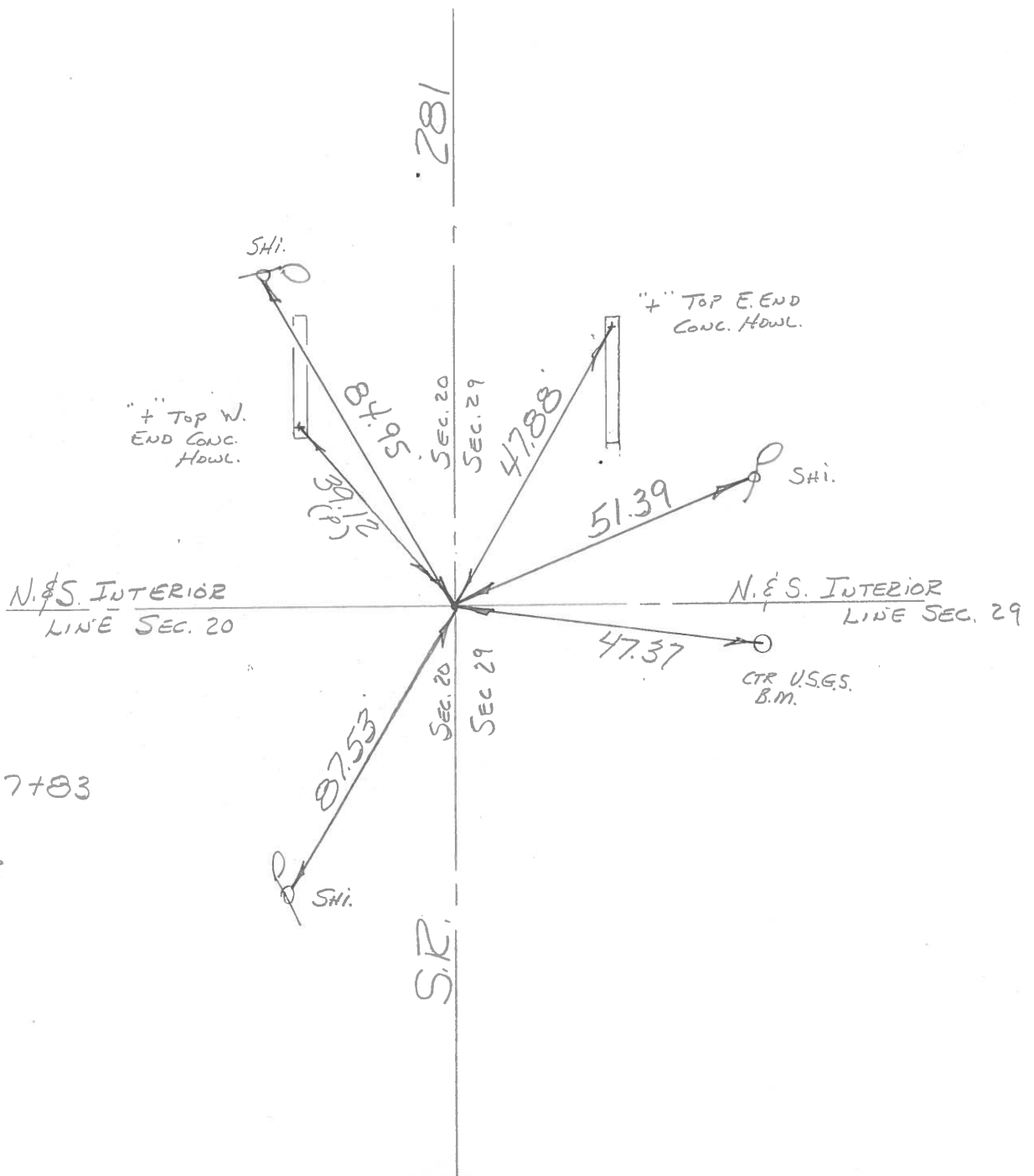
Date 5-22-79

Weather CLEAR

Temp. 65°



28



S.L.M STA. 707+83
 FD, P.K. NAIL
 1.5' S. OF CTR
 PAVE.