

O.D.O.T. DISTRICT 2 SURVEY OFFICE (USE ONLY)

PERSONNEL

REFERENCE NO. 29

SHEET 24 OF 34

NOTES RHOADES
 H.C. O'DONNELL
 R.C. RHOADES

DATE 9/6/18
 WEATHER CLOUDY
 TEMP. 76°

ROUTE SR 281
 COUNTY HENRY
 TOWNSHIP RICHFIELD
 SECTION 21
 T 4 N R 8 E

DWG BY NIESE PID PAVETRAN

TYPE MONUMENT SM.R.R.SPIKE

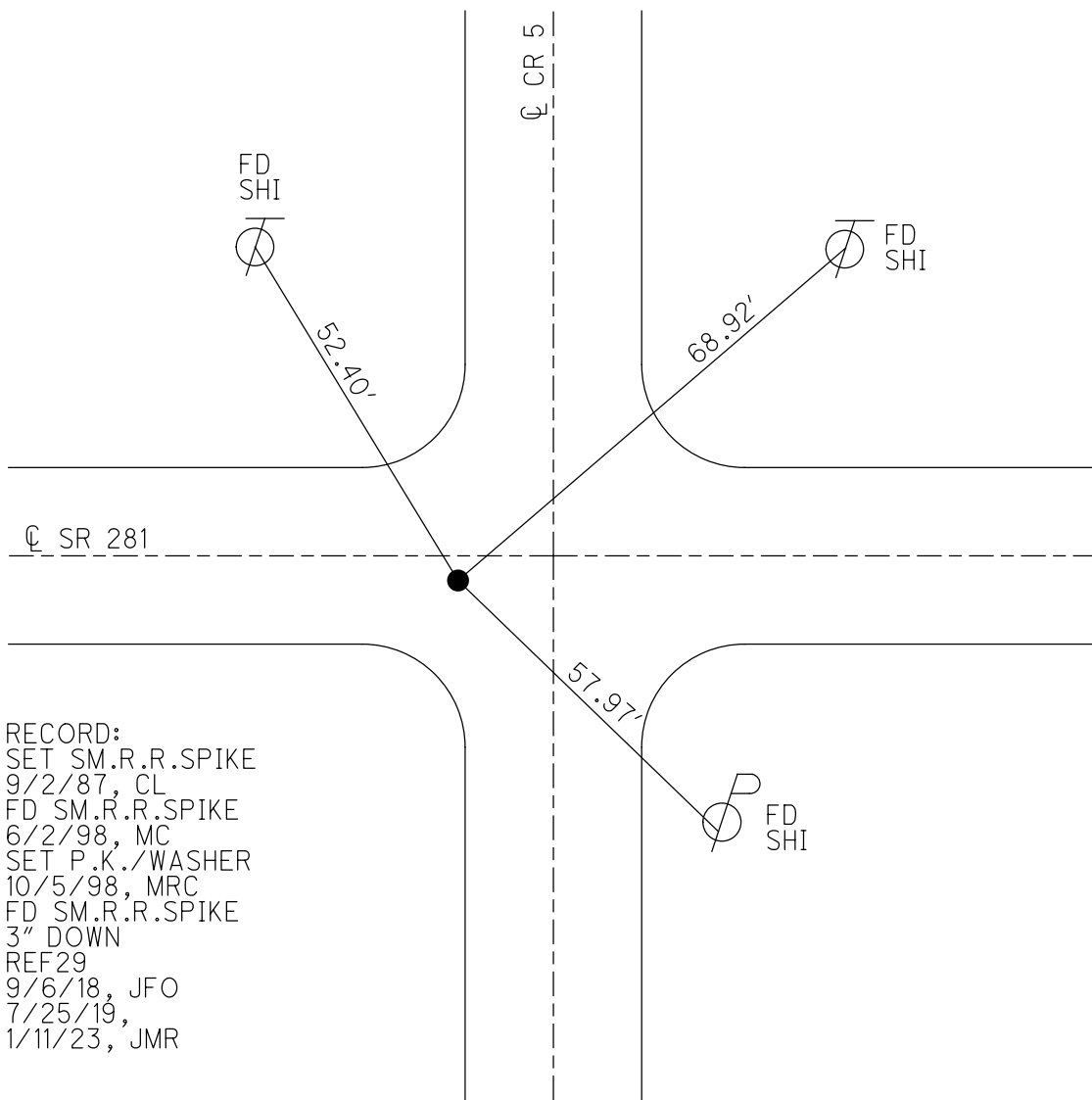
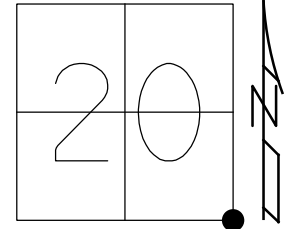
~~ON SURFACE~~ - BELOW 3"

OFFSET C PAVEMENT 2.0' ~~±~~ : RT
- TO - EDGE PAVEMENT 5.2' W OF C CR 5 N

STATION: 734+43

HORZ.DATUM: NAD83(2011) GEOID: 2012A

GRID: NORTHING: 592440.193 EASTING: 1567230.169



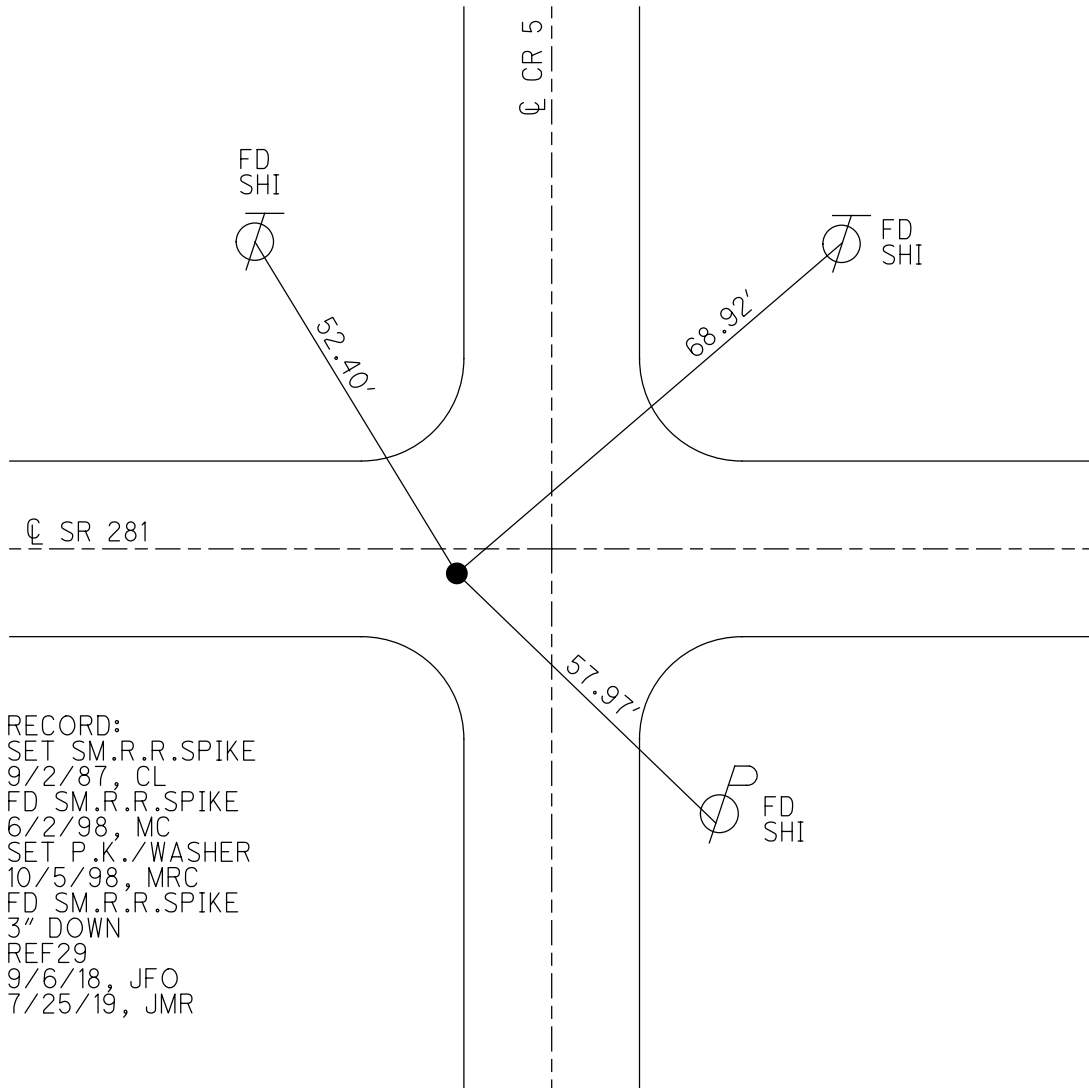
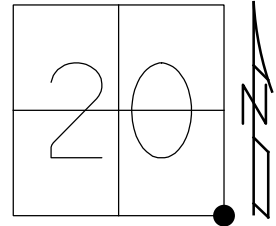
RECORD:
 SET SM.R.R.SPIKE
 9/2/87, CL
 FD SM.R.R.SPIKE
 6/2/98, MC
 SET P.K./WASHER
 10/5/98, MRC
 FD SM.R.R.SPIKE
 3" DOWN
 REF29
 9/6/18, JFO
 7/25/19,
 1/11/23, JMR

O.D.O.T. DISTRICT 2 SURVEY OFFICE (USE ONLY)

PERSONNEL _____ REFERENCE NO. 29 SHEET 24 OF 34
 NOTES RHOADES DATE 9/6/18 ROUTE SR 281
 H.C. O'DONNELL WEATHER CLOUDY COUNTY HENRY
 R.C. RHOADES TEMP. 76° TOWNSHIP RICHFIELD
 DWG BY NIESE PID CHIP_2 SECTION 21
 T 4 N R 8 E

TYPE MONUMENT SM.R.R.SPIKE
~~ON SURFACE~~ - BELOW 3"
 OFFSET C PAVEMENT 2.0' ~~RT~~ : RT
- TO - EDGE PAVEMENT 5.2' W OF C CR 5 N
 STATION: 734+43

HORZ.DATUM: NAD83(2011) GEOID: 2012A
 GRID: NORTHING: 592440.193 EASTING: 1567230.169



RECORD:
 SET SM.R.R.SPIKE
 9/2/87, CL
 FD SM.R.R.SPIKE
 6/2/98, MC
 SET P.K./WASHER
 10/5/98, MRC
 FD SM.R.R.SPIKE
 3" DOWN
 REF29
 9/6/18, JFO
 7/25/19, JMR

O.D.O.T. DISTRICT 2 SURVEY OFFICE

PERSONNEL

REFERENCE NO. 29

SHEET 25 OF 34

NOTES Canterbury

H.C. Rousso

R.C. Nutter

DATE 6-2-98

WEATHER Sunny

TEMP. +70°F

ROUTE SR 281

COUNTY Henry

TOWNSHIP Richfield

SECTION 21

T 4 N R 8 E

TYPE MONUMENT Sm. RR spk

ON SURFACE - ~~BELOW~~ Surface

~~LEFT~~ - & PAV'T. - RIGHT 2.0' RT

TO EDGE PAVEMENT 5.2' West of & Pmt Co. Rd.'s' North

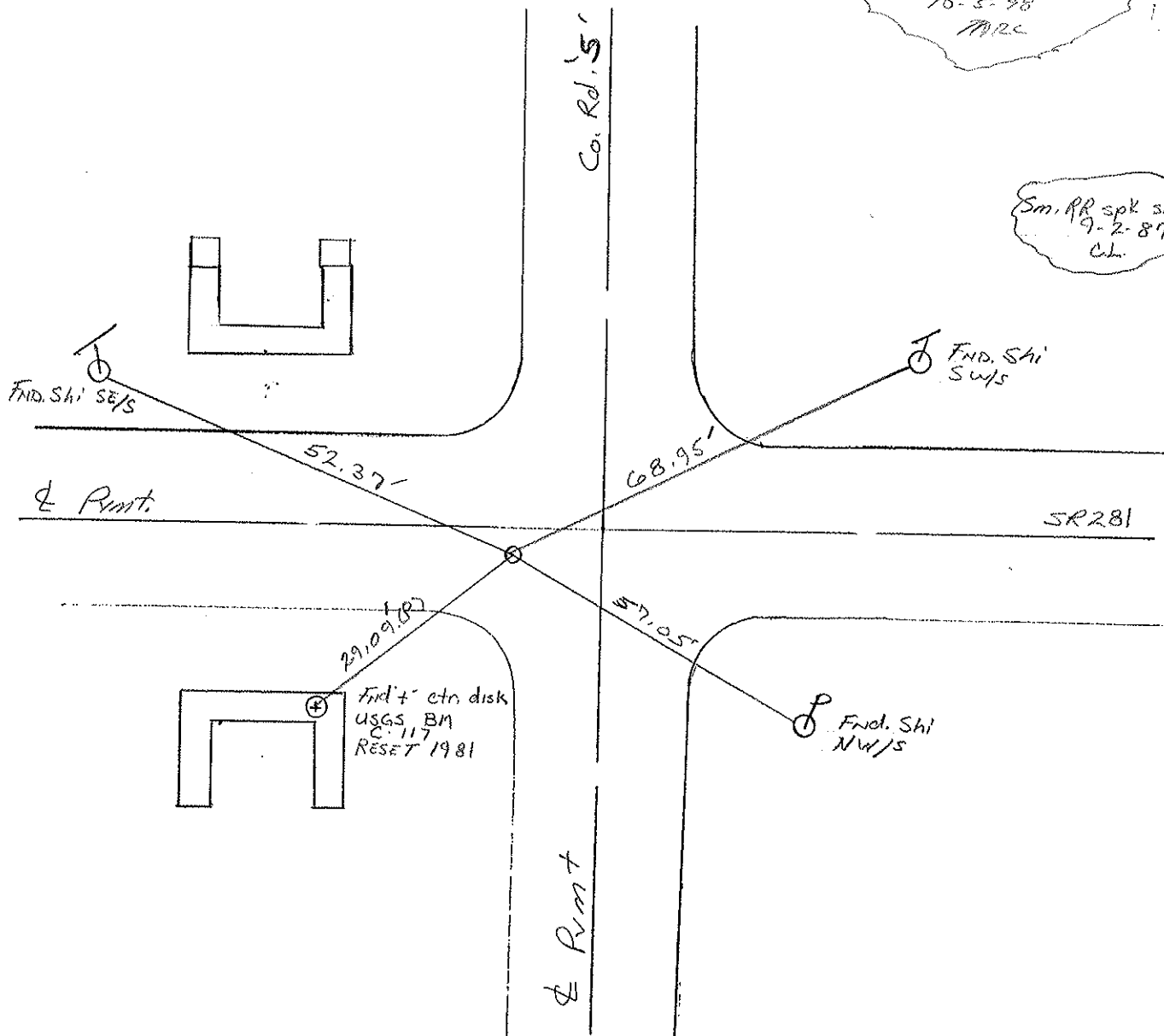
S.L.M. 22+382.62 SLK, 734+43 SLK

20	21
29	28



RESET PK # WASHCOT
10-5-98
MRC

Sm. RR spk set
9-2-89
CL



DRAWN BY TR

O.D.O.T. DISTRICT 2 SURVEY OFFICE

PERSONNEL

REFERENCE NO. 29

SHEET 25 OF

NOTES Sackman

H.C. BARNHISEL

R.C. LOCHRKE

DATE 8-13-87

WEATHER HAZY

TEMP. +75

ROUTE SR 281

COUNTY HENRY

TOWNSHIP RICHFIELD

SECTION 21

T4 N R 8 E

TYPE MONUMENT SMALL RR SPIKE

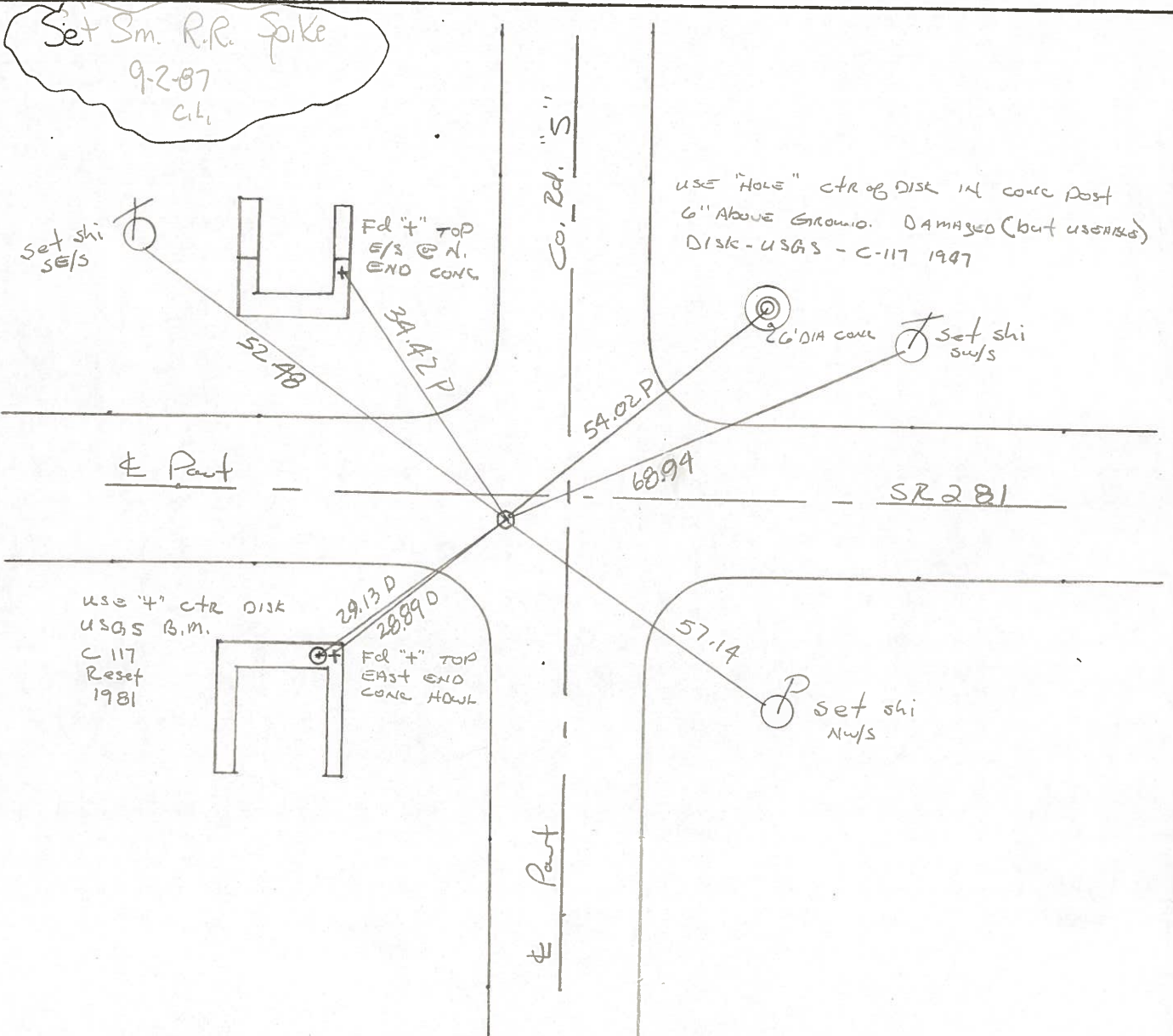
ON SURFACE - BELOW YES

~~LEFT~~ - PAV'T. - RIGHT 1.8'

TO EDGE PAVEMENT 5.2' west of the Point
Co. Rd "S" NORTH

S.L.M. 734 + 43

20	21
29	28

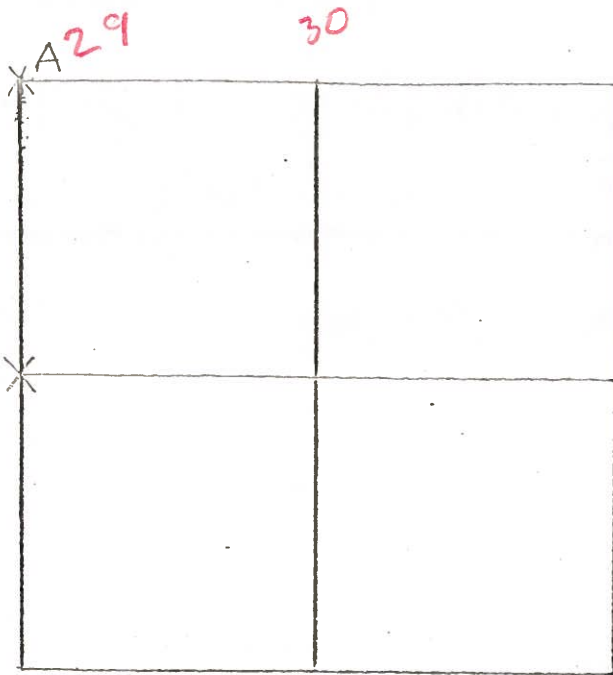


COUNTY HENRY S.R. 281

T 4 N , R 8 E

TOWNSHIP RICHFIELD

SECTION 28



6-8-79 R.W. J.J. G.M.

A-- FOUND RAILROAD SPIKE OVER WOOD
 STAKE IN CLAY TILE, OVER SMALL STONE
 OVER CORNER STONE (8" x 10" x 12") 32"
 BELOW ROAD SURFACE. RAILROAD SPIKE
 WAS 0.17' WEST AND 0.15' NORTH OF
 TOP CENTER OF STONE. REMOVED WOOD
 STAKE, TILE AND SMALL STONE. PLACED
 CENTER PUNCHED RAILROAD SPIKE ON

SURFACE OVER HIGH POINT OF STONE. P.K.'s 6' S. & E.

52.39' N.W. TO SHINER ^{SE/S} ⌋

34.60' N.W. TO "+" IN EAST CONC. HEADWALL

70.33' N.E. TO SHINER ^{SW/S} ⌋

56.61' S.S.E. TO DUPLEX ^{NW/S} ⌋

28.89' S.W. TO "+" EAST END CONC. BRIDGE WALL

6-4-79 R.W. J.J. G.M.

C- FOUND RECORDED IRON PIN (5/8" DIA) DRIVEN THRU
 FRACTURED STONE (4" x 8" x 15") 4" BELOW GROUND
 SURFACE. IRON PIN IS TRUE POINT. STONE IS LOCATED
 4.3' WEST OF WEST EDGE OF 18' PAVEMENT.

P.K.'s SET 10' S.E. & N.E

88.83' S.S.E. TO DUPLEX ^{N.W./S} ⌋

8.18' S.W. TO "+" N. END CONCRETE HEADWALL

32.08' W.S.W TO DUPLEX ^{N/S} ⌋

County HENRY S.R. 281

Date 5-22-79

Township RICHFIELD

Weather CLEAR

Section N.E. COR. SEC. 29

Temp. +65°

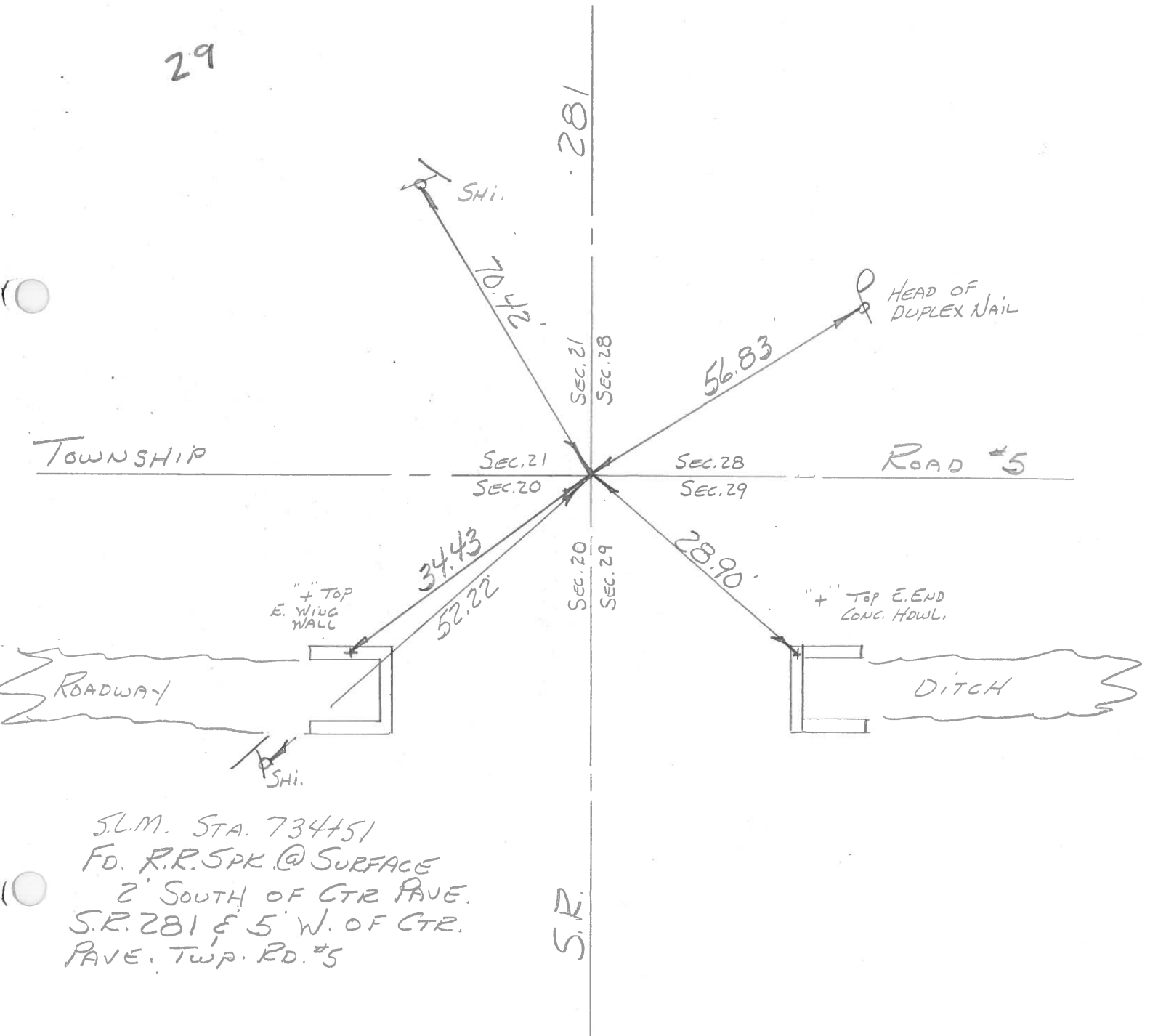
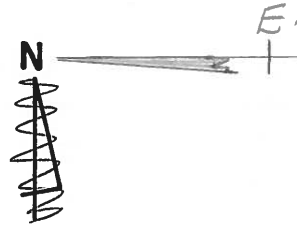
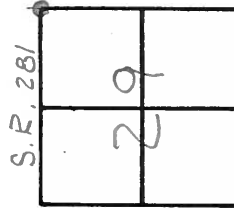
T4N, R8E

Personnel BURNSIDE

SMITH

KNAPE

MEAD



PERSONNEL TITLE PERSONNEL TITLE
 Tomasic _____
 Newser _____
 Granata _____

COUNTY HENRY DATE Nov. 25, 1974

S. R. 281 WEATHER _____

SEC. RICHFIELD TWP. TEMP. _____

DESCRIPTION LEFT CENTER LINE RIGHT JOB NO.

