

O.D.O.T. DISTRICT 2 SURVEY OFFICE (USE ONLY)

PERSONNEL

REFERENCE NO. 31

SHEET 26 OF 34

NOTES RHOADES DATE 5/8/17

H.C. O'DONNELL WEATHER SUNNY

R.C. RHOADES TEMP. 44°

ROUTE SR 281

COUNTY HENRY

TOWNSHIP RICHFIELD

SECTION 28

DWG BY NIESE PID PAVETRAIN

T 4 N R 8 E

TYPE MONUMENT MAG/WASHER

ON SURFACE - ~~BELOW~~ ON

OFFSET C PAVEMENT 1.7' ~~ET~~ : RT

- TO - EDGE PAVEMENT

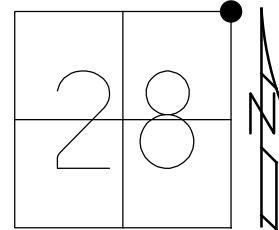
STATION: 787+93

HORZ.DATUM: NAD83(2011)

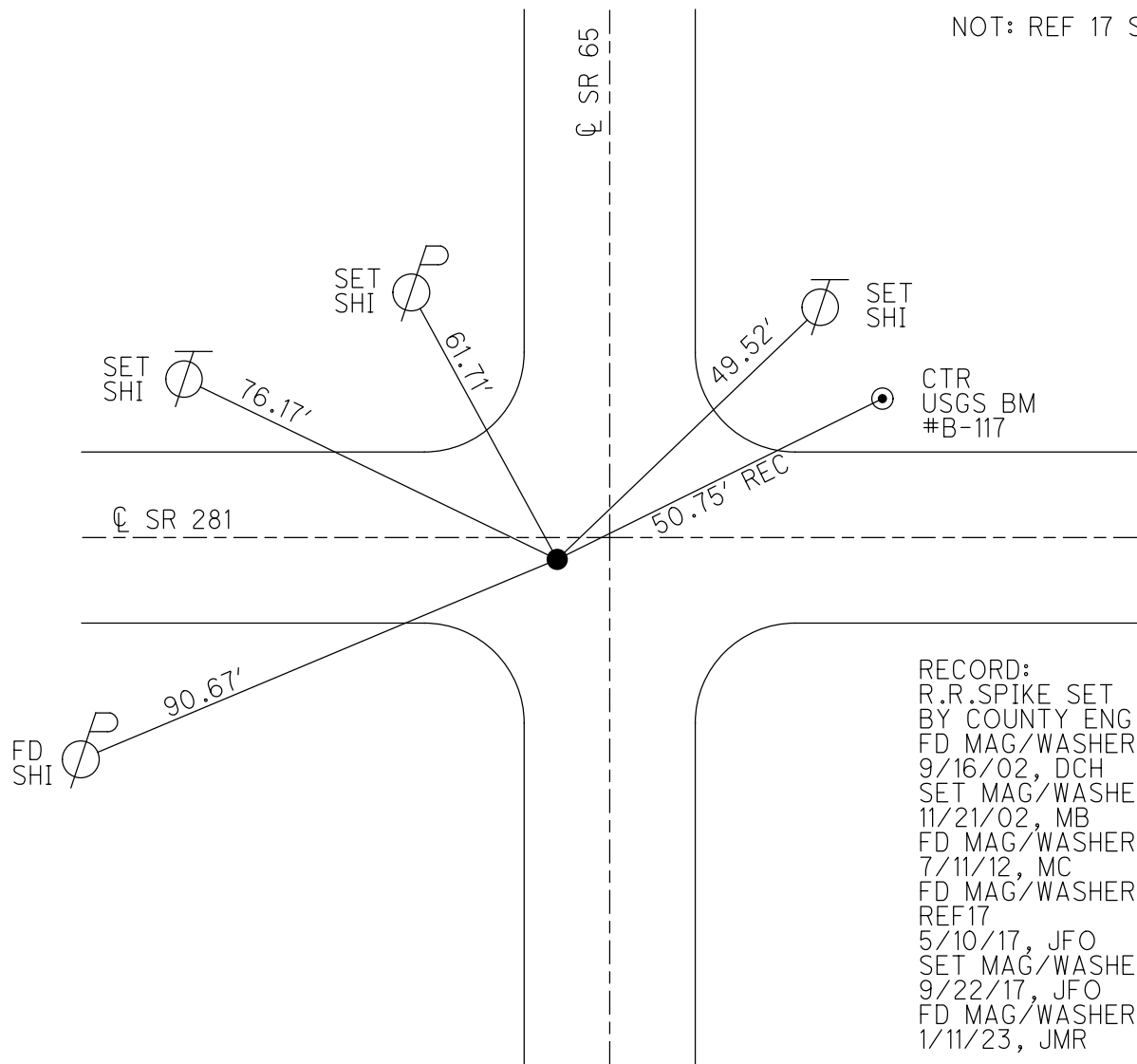
GEOID: 2012A

GRID: NORTHING: 592437.952

EASTING: 1572551.483



NOT: REF 17 SR 65



RECORD:
 R.R.SPIKE SET
 BY COUNTY ENG
 FD MAG/WASHER
 9/16/02, DCH
 SET MAG/WASHER
 11/21/02, MB
 FD MAG/WASHER
 7/11/12, MC
 FD MAG/WASHER
 REF17
 5/10/17, JFO
 SET MAG/WASHER
 9/22/17, JFO
 FD MAG/WASHER
 1/11/23, JMR

O.D.O.T. DISTRICT 2 SURVEY OFFICE (USE ONLY)

PERSONNEL

REFERENCE NO. 31

SHEET 26 OF 34

NOTES RHOADES

DATE 5/8/17

ROUTE SR 281

H.C. O'DONNELL

WEATHER SUNNY

COUNTY HENRY

R.C. RHOADES

TEMP. 44°

TOWNSHIP RICHFIELD

SECTION 28

DWG BY NIESE

PID CHIP_2

T 4 N R 8 E

TYPE MONUMENT MAG/WASHER

ON SURFACE - ~~BELOW~~ ON

OFFSET \bar{C} PAVEMENT 1.7' ~~±~~ : RT

- TO - EDGE PAVEMENT

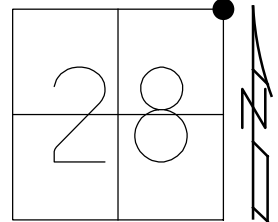
STATION: 787+93

HORZ. DATUM: NAD83(2011)

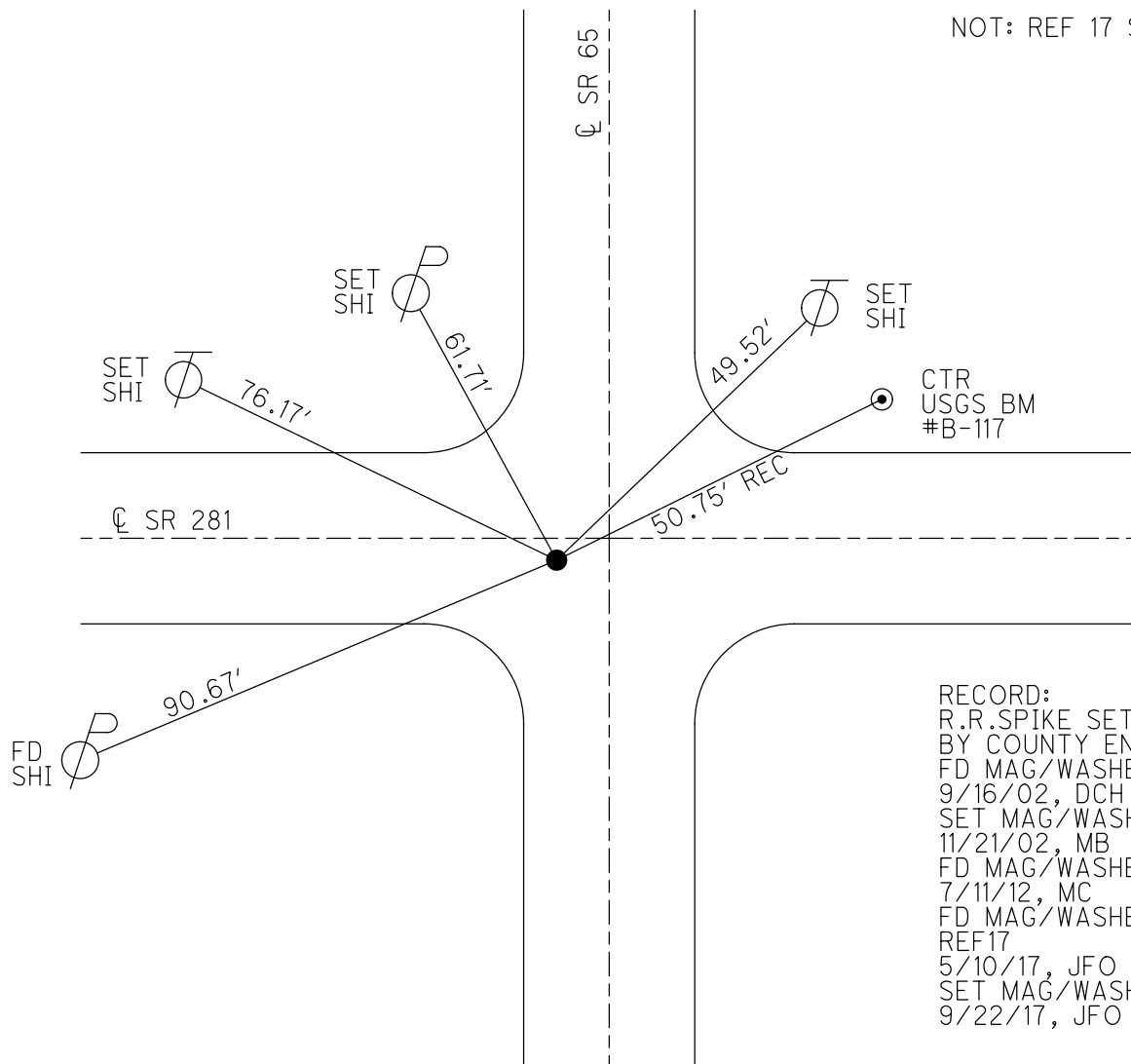
GEOID: 2012A

GRID: NORTHING: 592437.952

EASTING: 1572551.483



NOT: REF 17 SR 65



RECORD:
 R.R.SPIKE SET
 BY COUNTY ENG
 FD MAG/WASHER
 9/16/02, DCH
 SET MAG/WASHER
 11/21/02, MB
 FD MAG/WASHER
 7/11/12, MC
 FD MAG/WASHER
 REF17
 5/10/17, JFO
 SET MAG/WASHER
 9/22/17, JFO

O.D.O.T. DISTRICT 2 SURVEY OFFICE

PERSONNEL

REFERENCE NO. 31

SHEET 27 OF 34

NOTES Canterbury

H.C. Rouses

R.C. Nuffer

DATE 6-2-98

WEATHER SUNNY

TEMP. +70°F

ROUTE SR 281

COUNTY Henry

TOWNSHIP Richfield

SECTION 21, 22, 28, 27

T 4 N 8 E

TYPE MONUMENT PK & WASHER

ON SURFACE - ~~BELOW~~ Surface

LEFT - ☉ PAV'T. - RIGHT ☉ ^{13 R+ SR 281} _{30 R+ SR 65}

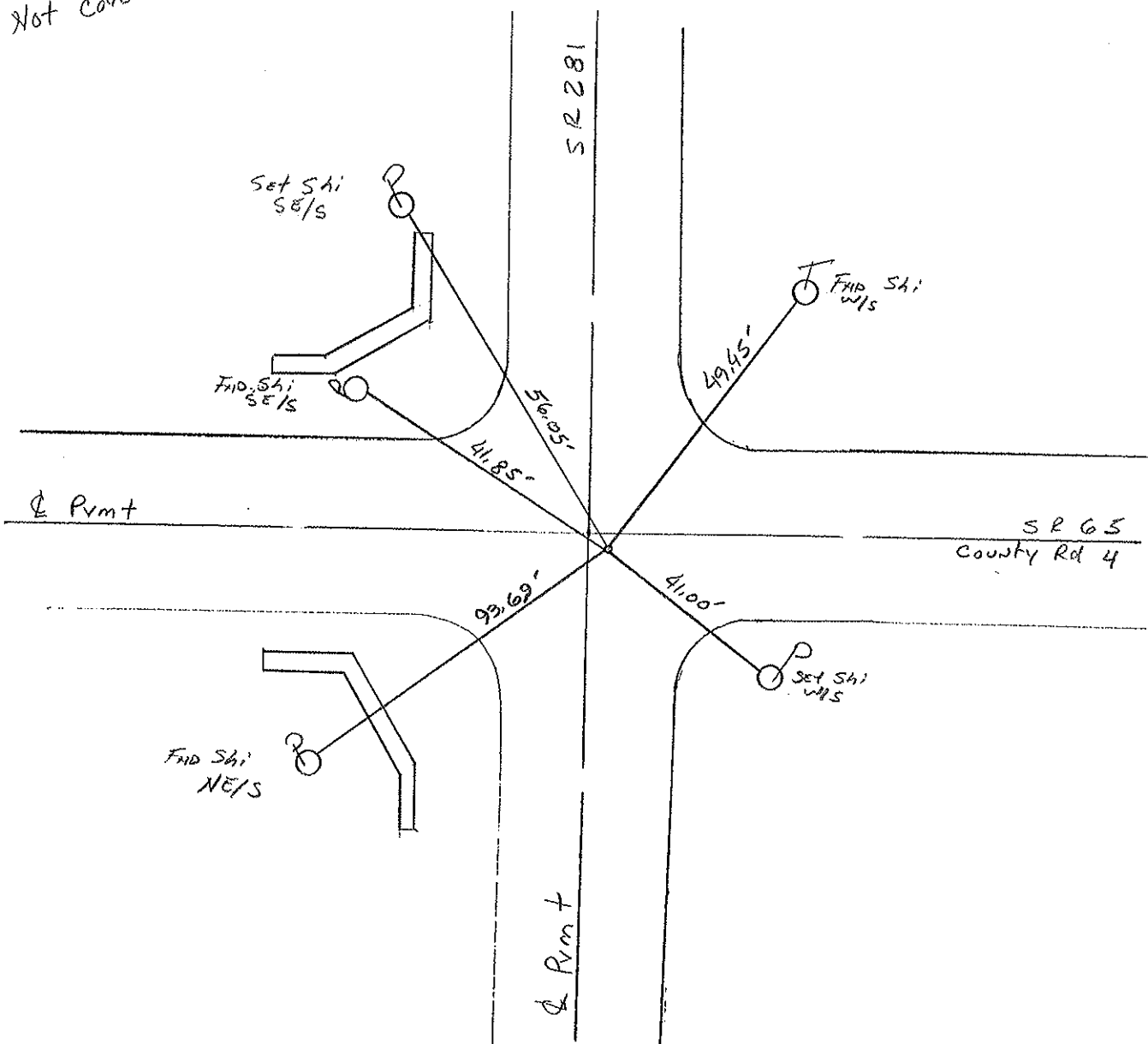
___ JO ___ EDGE PAVEMENT

S.L.M. 24+00.235 SLK (787+9785 SLK)

21	22
28	27



Not COVERED



DRAWN BY TR

O.D.O.T. DISTRICT 2 SURVEY OFFICE

PERSONNEL

REFERENCE NO. 17 SR 65 SHEET 18 OF 18
31 SR 281

NOTES BARNHISEL

H.C. " " "

R.C. HOFFMAN

DATE 4-11-90

WEATHER SUNNY

TEMP. +35°

ROUTE 65

COUNTY HENRY

TOWNSHIP Richfield

SECTION 28

T 4 N R B E

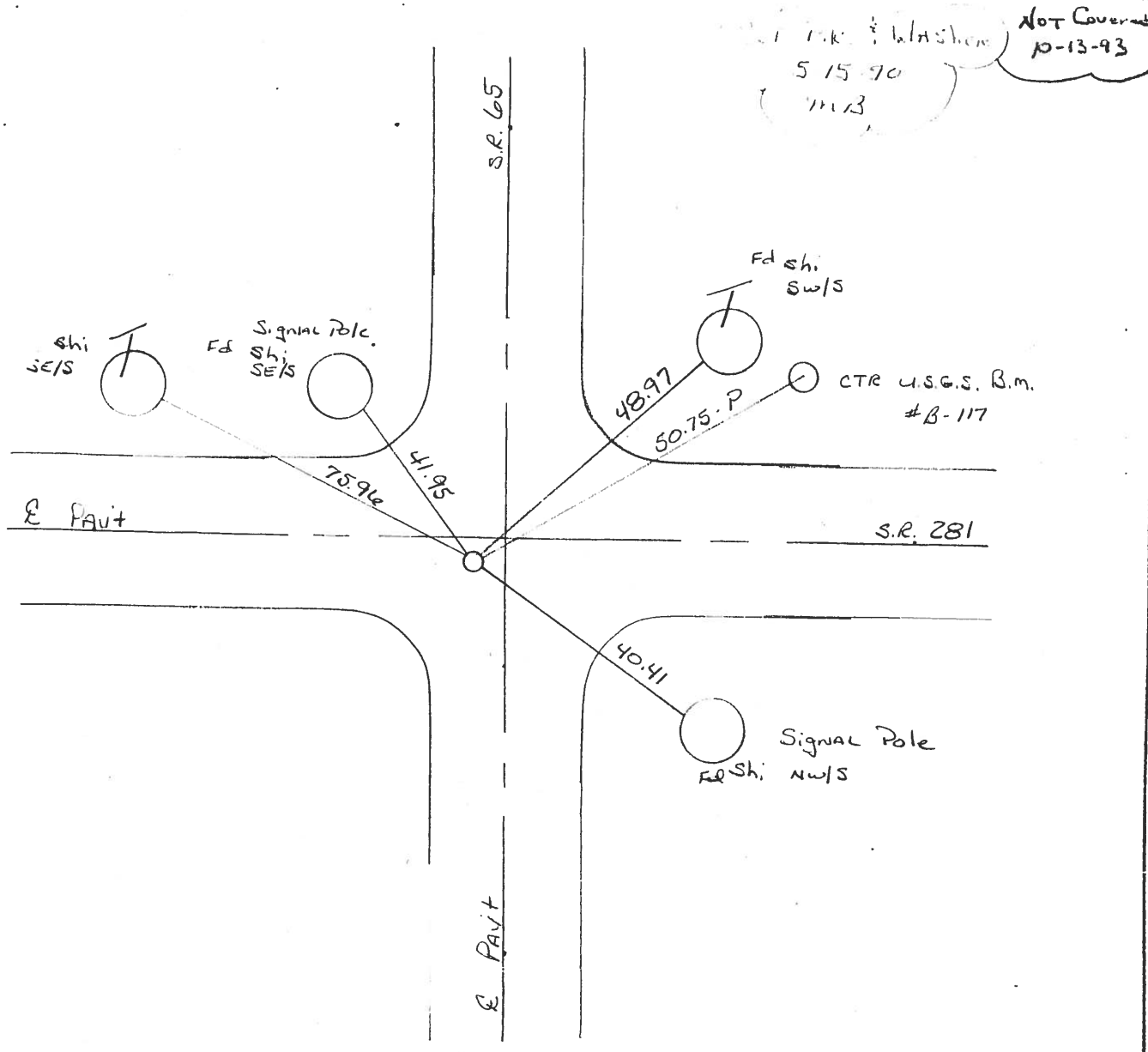
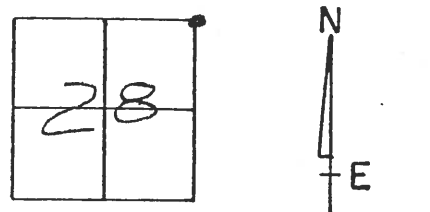
TYPE MONUMENT P.K. & Washer

ON SURFACE - ~~BELOW~~ yes

LEFT-~~☉~~ PAV'T. - RIGHT 3.2

~~- TO -~~ EDGE PAVEMENT 1.7 S. OF E SR 281

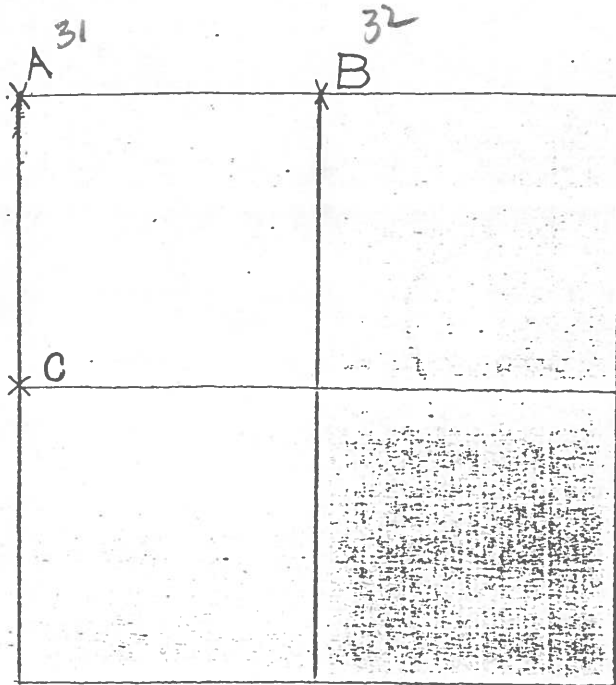
S.L.M. 423 + 56



COUNTY HENRY

TOWNSHIP RICHFIELD

SECTION 27



7-26-79 R.W. J.J. G.M.

A -- FOUND RECORDED IRON PIPE OVER IRON PIN. NO STONE COULD BE LOCATED. REPLACED IRON PIPE IN ORIGINAL POSITION. P.K.'s 6 N&W.
 56.30' N.W. TO DUPLEX $\frac{SE}{S}$ I
 29.88' N.W. TO "+" TOP NORTH END HDWL.
 49.04' N.E. TO SHINER $\frac{SW}{S}$ I
 50.75' N.E. TO CTR. U.S.G.S. B.M. *B-11
 28.68' S.W. TO "+" TOP SOUTH END HDWL

12-21-79 R.W. C.S.

B - CORNER IS LOST. RE-ESTABLISHED $N\frac{1}{4}$ POST MIDWAY BETWEEN AND IN LINE WITH THE N.E. COR. AND N.W. COR. OF SEC. 27. PLACED $\frac{5}{8}$ " x 18" IRON PIN @ $N\frac{1}{4}$ POST. P.K.'s 15' N.E. & N.W. STONE IS 8.0' SOUTH OF SOUTH EDGE OF 20' PAVEMENT.

43.55' N.N.E. TO "+" TOP EAST END CONC. HEADWALL (PLUMBED)

52.81' N.N.E. TO DUPLEX $\frac{S}{S}$ I (PLUMBED)

19.72' S.E. TO $\frac{5}{8}$ " x 30" IRON PIN ON DITCH BANK

22.02' S.W. TO $\frac{5}{8}$ " x 30" IRON PIN ON DITCH BANK

PERSONNEL TITLE PERSONNEL TITLE
 Tomsic _____
 Neuser _____
 Granata _____

COUNTY HENRY DATE Nov 26, 1971
 S. R. 281 WEATHER _____
 SEC. RICHFIELD TWP. TEMP. _____

DESCRIPTION LEFT CENTER LINE RIGHT JOB NO.

