

O.D.O.T. DISTRICT 2 SURVEY OFFICE (USE ONLY)

PERSONNEL

REFERENCE NO. 32

SHEET 27 OF 34

NOTES RHOADES
 H.C. O'DONNELL
 R.C. RHOADES

DATE 9/7/18
 WEATHER CLOUDY
 TEMP. 65°

ROUTE SR 281
 COUNTY HENRY
 TOWNSHIP RICHFIELD
 SECTION 27

DWG BY NIESE PID PAVETRAIN

T 4 N R 8 E

TYPE MONUMENT 5/8" IPIN

~~ON SURFACE~~ - BELOW 3"

OFFSET 7.7' TO RT EDGE PAVEMENT ± : RT

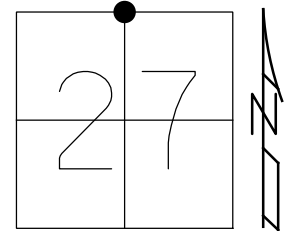
STATION: 814+32

HORZ.DATUM: NAD83(2011)

GEOID: 2012A

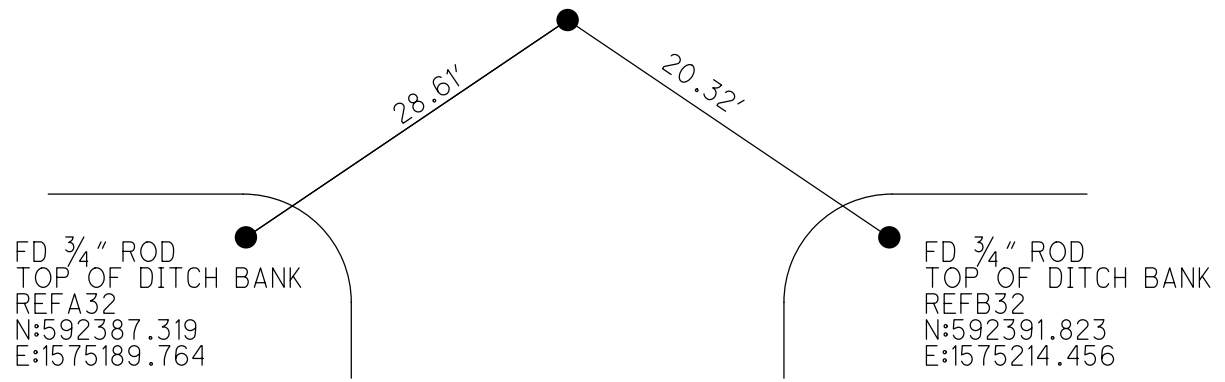
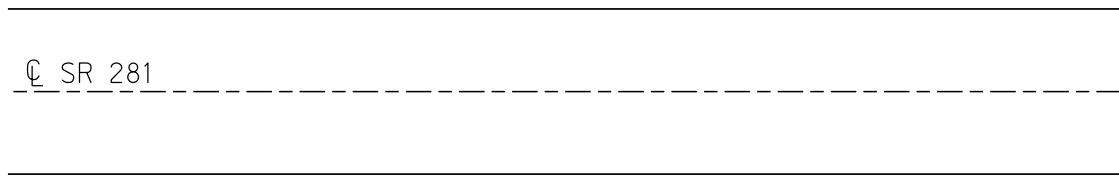
GRID: NORTHING: 592410.579

EASTING: 1575206.585



RECORD:
 N¹/₄ COR SEC 27
 CORNER LOST, RE-ESTABLISHED MIDWAY
 BETWEEN NE&NW COR OF SEC 27
 PLACED ⁵/₈"x18" IPIN
 P.K.'S 15' NE&NW
 HENRY COUNTY, 1979

RECORD:
 FD 5/8" IPIN
 6" DOWN
 LEANING SOUTH
 6/2/98, MC
 FD 5/8" IPIN
 3" DOWN
 9/7/18, JFO
 7/25/19, JMR



O.D.O.T. DISTRICT 2 SURVEY OFFICE (USE ONLY)

PERSONNEL

REFERENCE NO. 32

SHEET 27 OF 34

NOTES RHOADES

DATE 9/7/18

ROUTE SR 281

H.C. O'DONNELL

WEATHER CLOUDY

COUNTY HENRY

R.C. RHOADES

TEMP. 65°

TOWNSHIP RICHFIELD

SECTION 27

DWG BY NIESE

PID CHIP_2

T 4 N R 8 E

TYPE MONUMENT 5/8" IPIN

~~ON SURFACE~~ - BELOW 3"

OFFSET \odot PAVEMENT 17.9' RT ~~LT~~ : RT

7.7' TO RT EDGE PAVEMENT

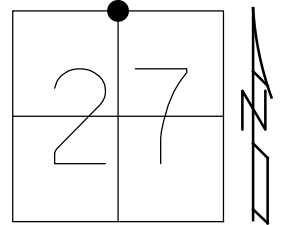
STATION: 814+32

HORZ.DATUM: NAD83(2011)

GEOID: 2012A

GRID: NORTHING: 592410.579

EASTING: 1575206.585



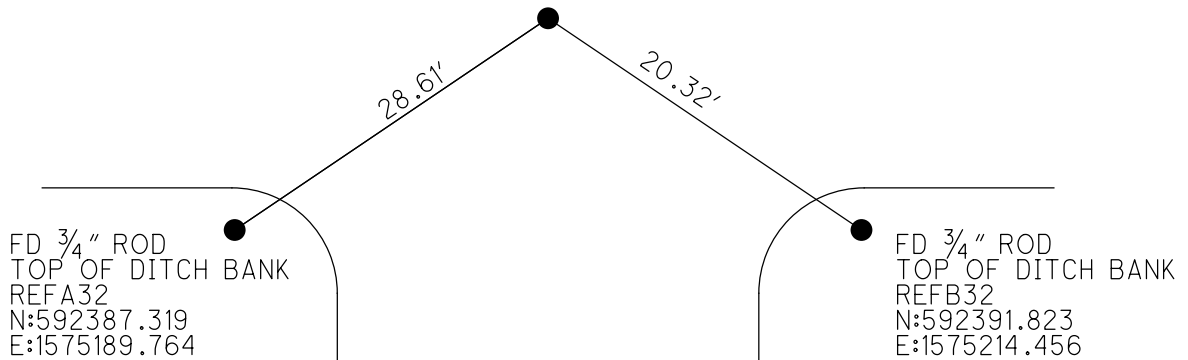
RECORD:

N $\frac{1}{4}$ COR SEC 27
 CORNER LOST, RE-ESTABLISHED MIDWAY
 BETWEEN NE&NW COR OF SEC 27
 PLACED $\frac{5}{8}$ "x18" IPIN
 P.K.'S 15' NE&NW
 HENRY COUNTY, 1979

RECORD:

FD 5/8" IPIN
 6" DOWN
 LEANING SOUTH
 6/2/98, MC
 FD 5/8" IPIN
 3" DOWN
 9/7/18, JFO
 7/25/19, JMR

\odot SR 281



O.D.O.T. DISTRICT 2 SURVEY OFFICE

PERSONNEL

REFERENCE NO. 32

SHEET 28 OF 34

NOTES Canterbury

H.C. Rausas

R.C. Nuffer

DATE 6-2-98

WEATHER Sunny

TEMP. +90°F

ROUTE SR 281

COUNTY Henry

TOWNSHIP Richfield

SECTION 27

T4 N R 8 E

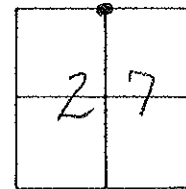
TYPE MONUMENT 5/8" I PIN

ON SURFACE - BELOW 6" BELOW

LEFT- & PAV'T. - RIGHT 17.9 RT

2.7 TO RT EDGE PAVEMENT

S.L.M. 24x8 1/2 SLK (814432 SLM)

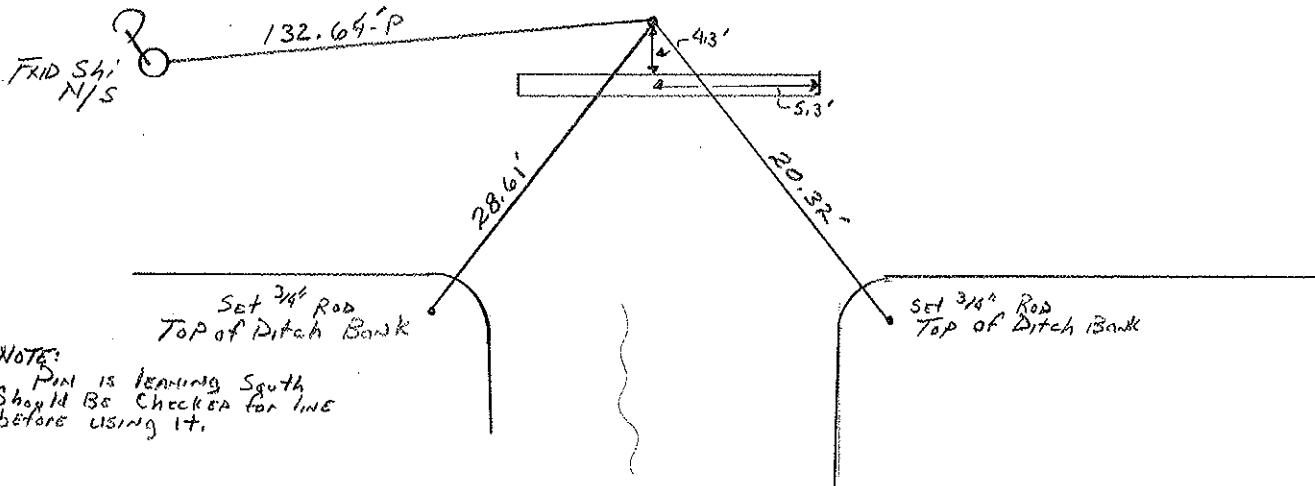


RECORDS:

N 1/4 CORNER SEC 27
CORNER LOST, Re-established MID-WAY
BETWEEN NE 1/4 COR of SEC 27
Placed 5/8" x 18" I-PIN
P.K.'S 15' NE 1/4
HENRY County 1979

⊙ Pmt

SR281



NOTE:
PIN IS leaning South
Should Be Checked for line
before using it.

DRAWN BY TR

O.D.O.T. DISTRICT 2 SURVEY OFFICE

PERSONNEL _____

REFERENCE NO. 32 SHEET _____ OF _____

NOTES LOEHRKE

H.C. BARNHISEL

R.C. SOCKMAN

DATE 8-11-86

WEATHER PT CLOUDY

TEMP. +60°

ROUTE SR 281

COUNTY HENRY

TOWNSHIP RICHFIELD

SECTION 27

T 4 N R 8 E

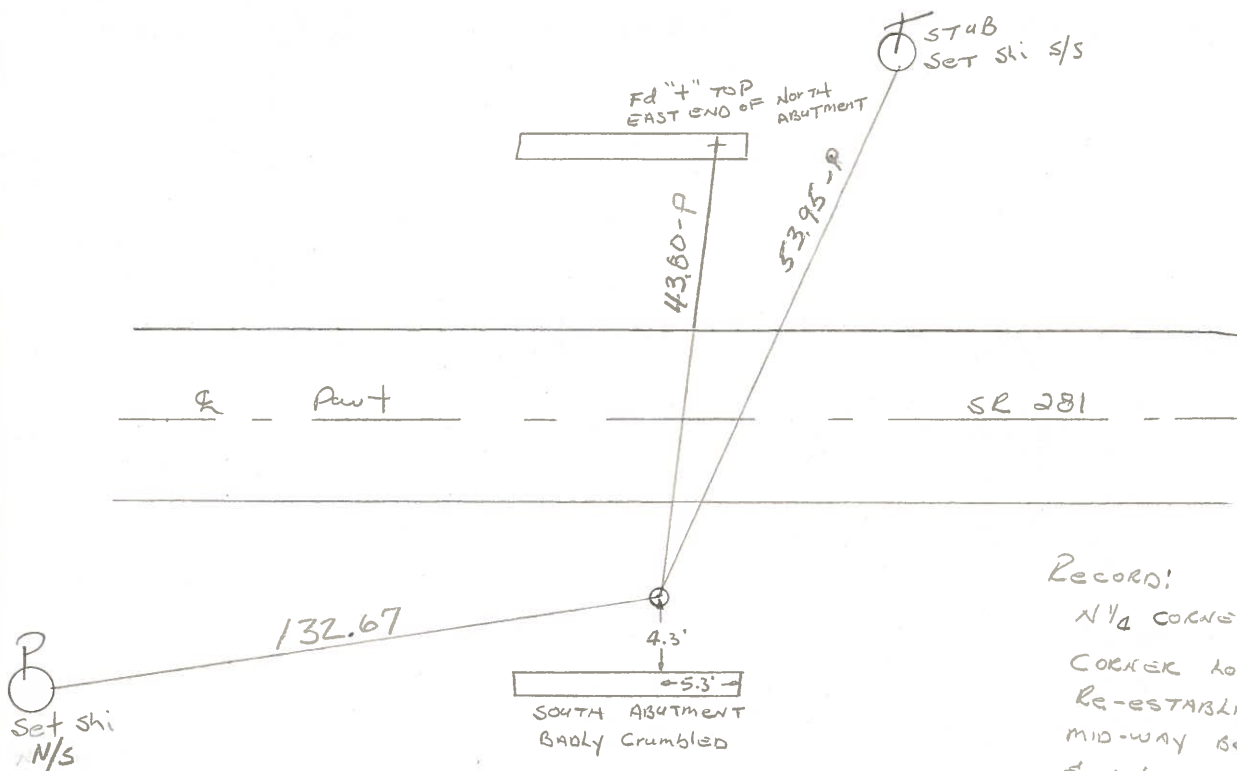
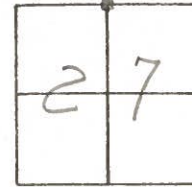
TYPE MONUMENT 5/8" I. PIN

ON SURFACE - ~~BELOW~~ yes

LEFT-~~C~~ PAV'T. - RIGHT 18.2

8.5 TO RT. EDGE PAVEMENT

S.L.M. 814+32



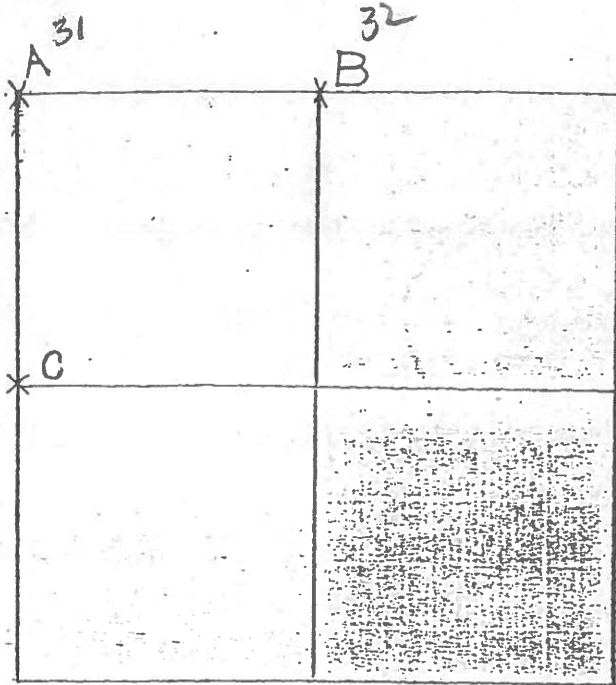
Record:
 N¹/₄ CORNER Sec 27
 CORNER LOST.
 Re-established
 MID-WAY BETWEEN NE
 & NW COR of sec 27
 PLACED 5/8" X 18" I. PIN
 P.K.'s 15' NE & NW.
 HENRY COUNTY 1979

COUNTY HENRY

T-4-N, R-8-E

TOWNSHIP RICHFIELD

SECTION 27



7-26-79 R.W. J.J. G.M.

A - FOUND RECORDED IRON PIPE OVER IRON PIN. NO STONE COULD BE LOCATED. REPLACED IRON PIPE IN ORIGINAL POSITION: P.K.'S 6 N&W 56.30' N.W. TO DUPLEX $\frac{5}{8}$ " \perp 29.88' N.W. TO "T" TOP NORTH END HDWL 49.04' N.E. TO SHINER $\frac{5}{8}$ " \perp 50.75' N.E. TO CTR. U.S.G.S. B.M. "B" 28.66' S.W. TO "T" TOP SOUTH END HDWL

12-21-79 R.W. C.S.

B - CORNER IS LOST. RE-ESTABLISHED $\frac{1}{4}$ POST MIDWAY BETWEEN AND IN LINE WITH THE N.E. COR. AND N.W. COR. OF SEC. 27. PLACED $\frac{5}{8}$ " \times 18" IRON PIN @ $\frac{1}{4}$ POST P.K.'S 15' N.E. & N.W. STONE IS 8.0' SOUTH OF SOUTH EDGE OF 20' PAVEMENT. 43.55' N.N.E. TO "T" TOP EAST END CONC. HEADWALL (PLUMBED) 52.81' N.N.E. TO DUPLEX $\frac{5}{8}$ " \perp (PLUMBED) 19.72' S.E. TO $\frac{5}{8}$ " \times 30" IRON PIN ON DITCH BANK 22.02' S.W. TO $\frac{5}{8}$ " \times 30" IRON PIN ON DITCH BANK